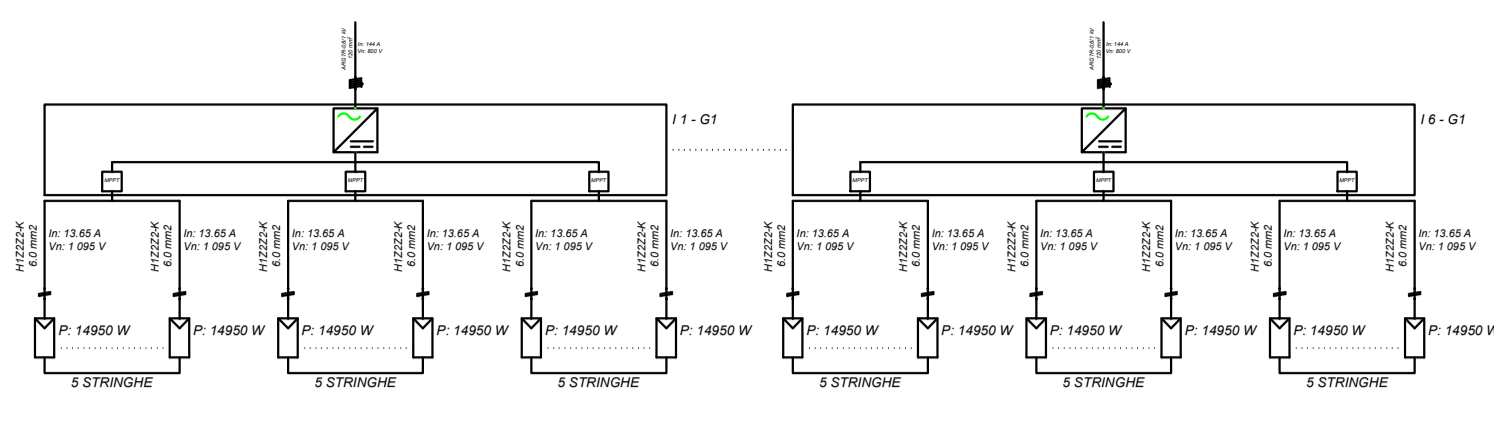


CAMPO FOTOVOLTAICO 1

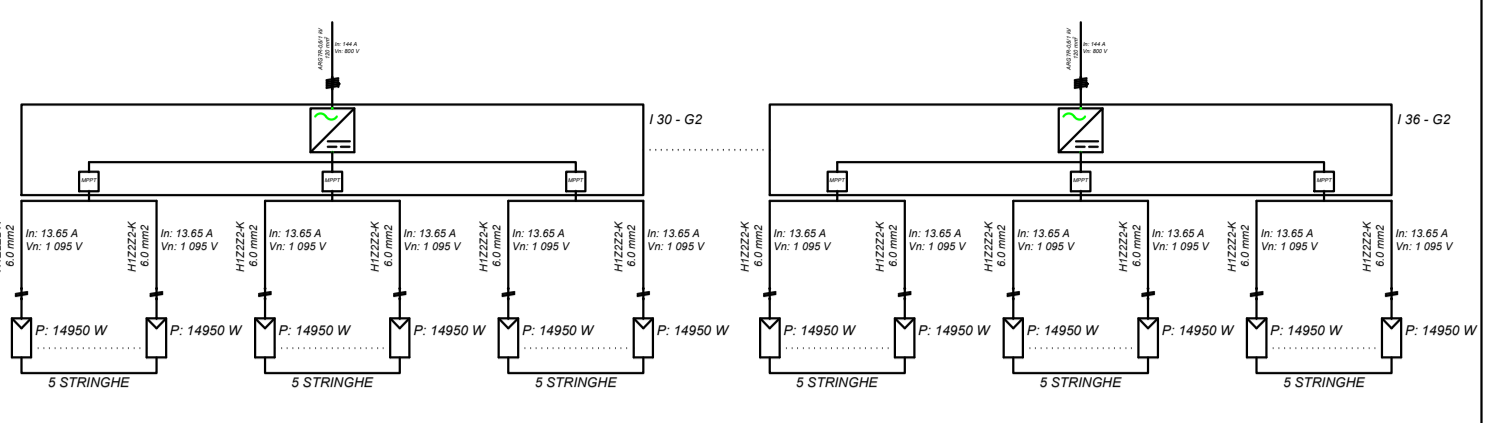
CAMPO FOTOVOLTAICO 2

CAMPO FOTOVOLTAICO 3

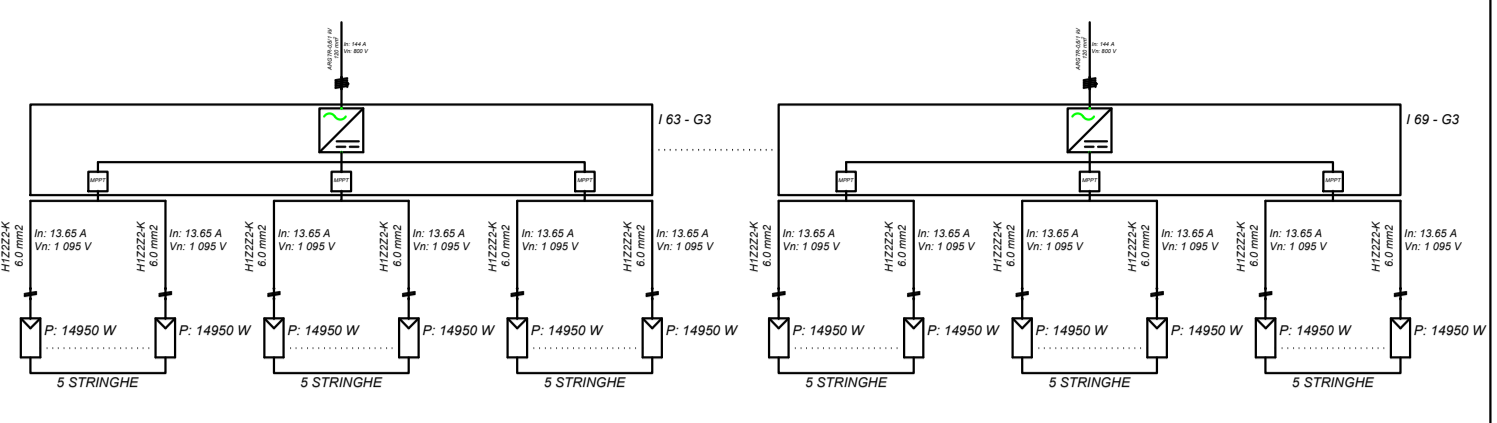
SOTTOCAMPO 1-1



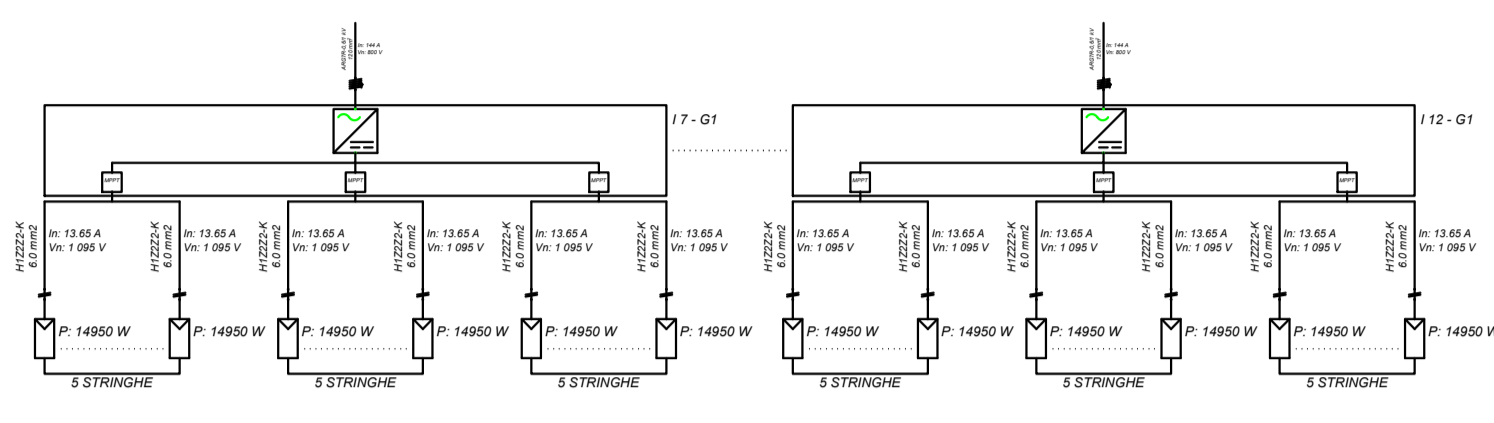
SOTTOCAMPO 2-1



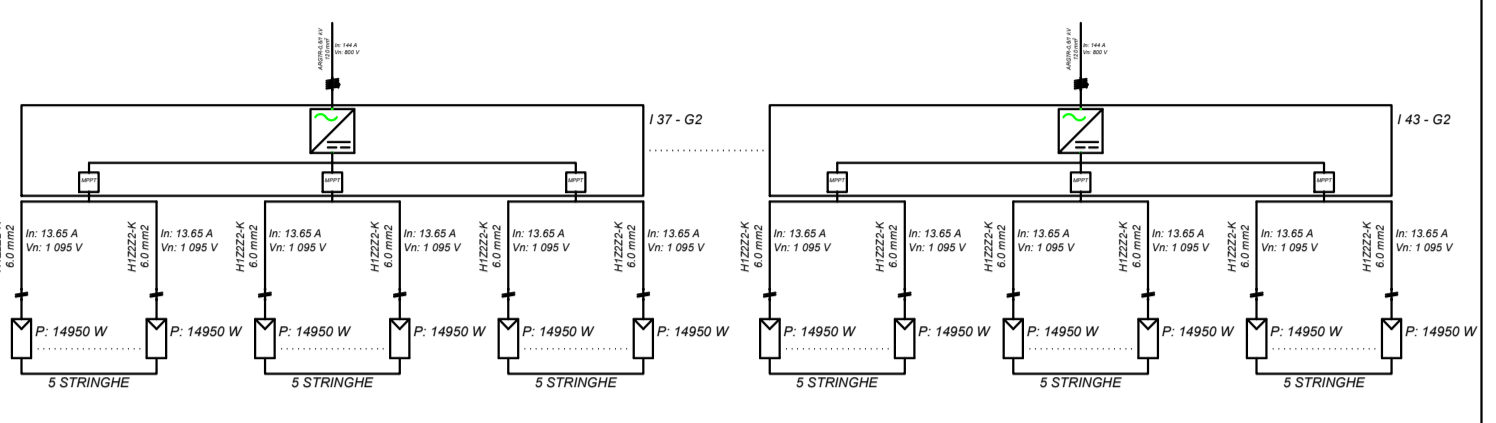
SOTTOCAMPO 3-1



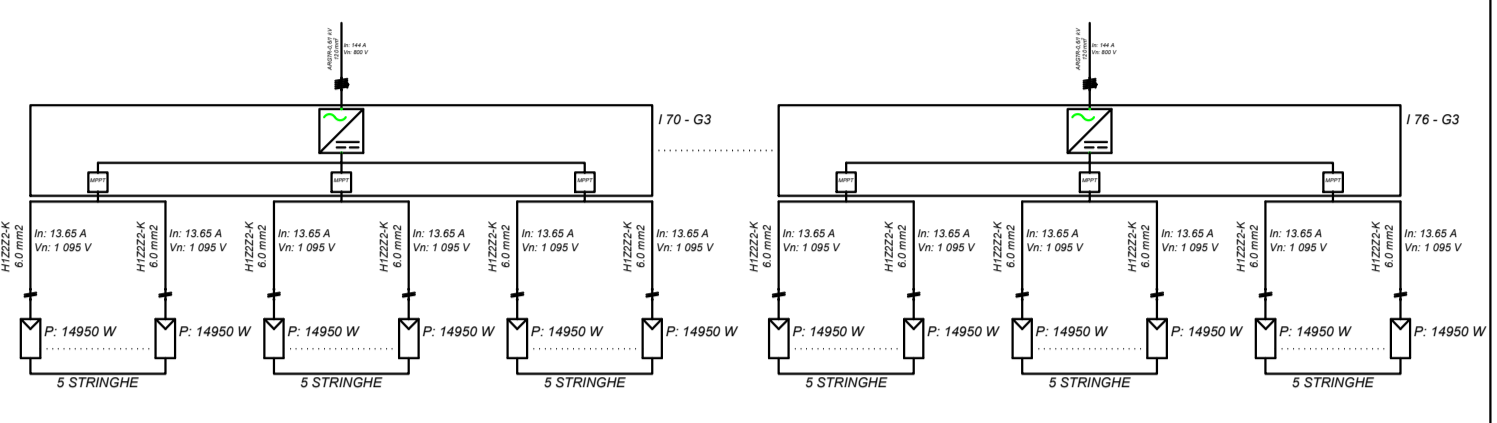
SOTTOCAMPO 1-2



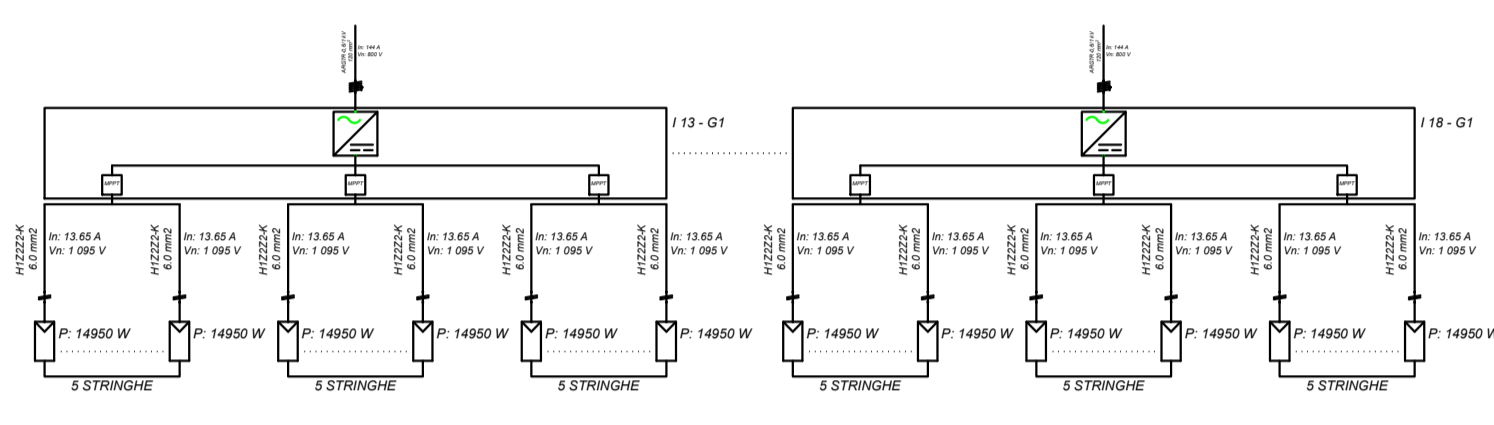
SOTTOCAMPO 2-2



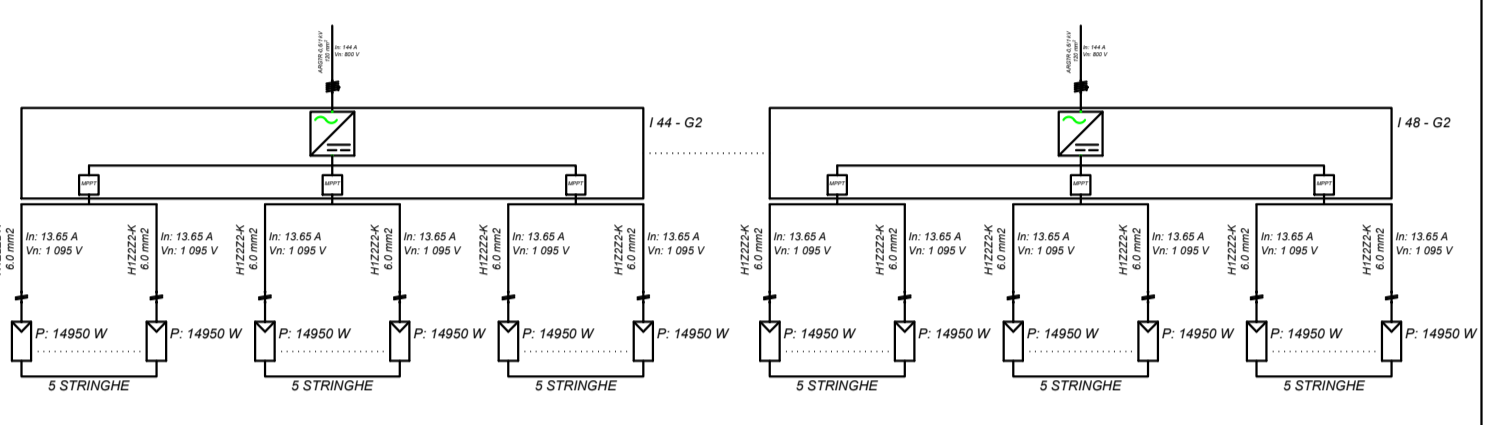
SOTTOCAMPO 3-2



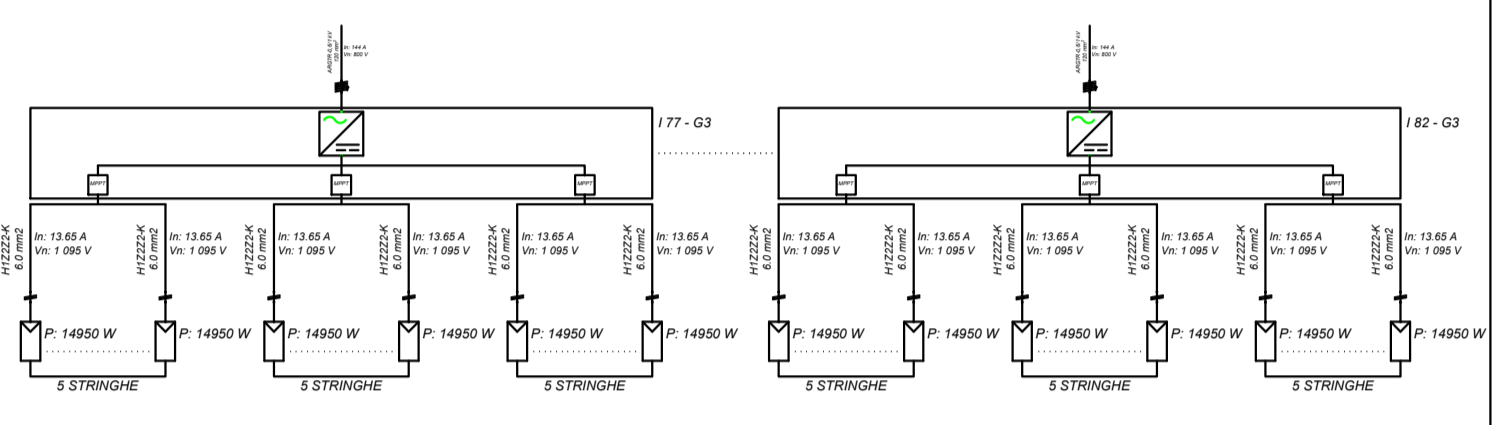
SOTTOCAMPO 1-3



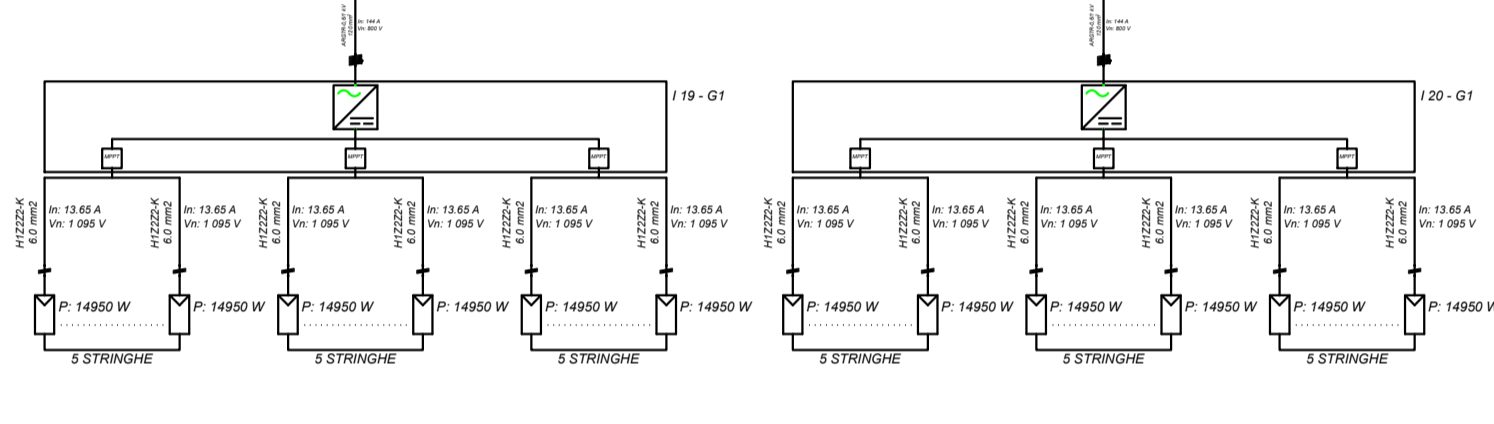
SOTTOCAMPO 2-3



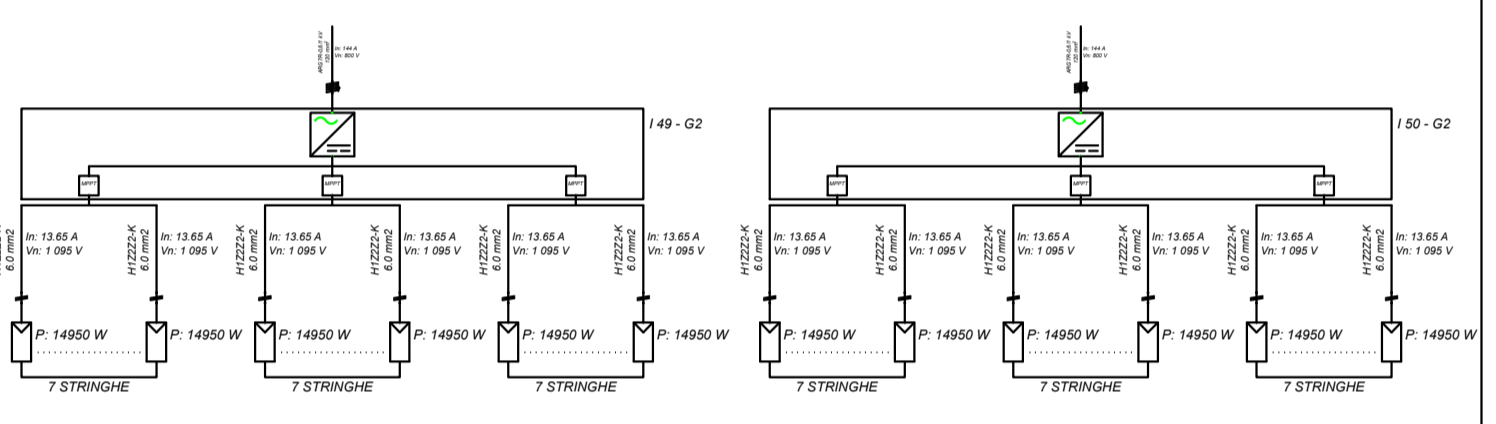
SOTTOCAMPO 3-3



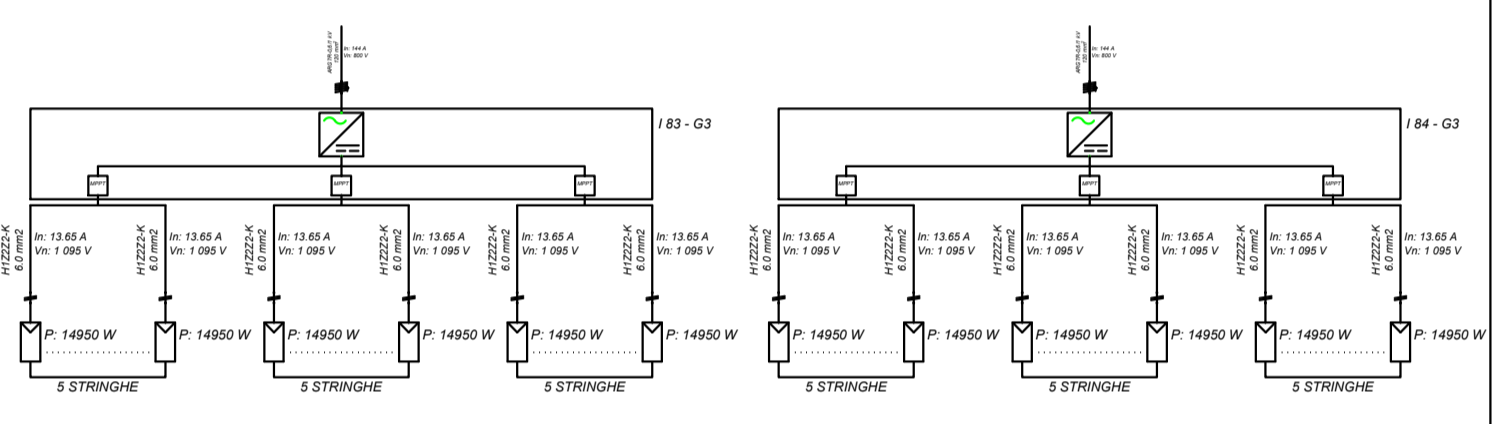
SOTTOCAMPO 1-4



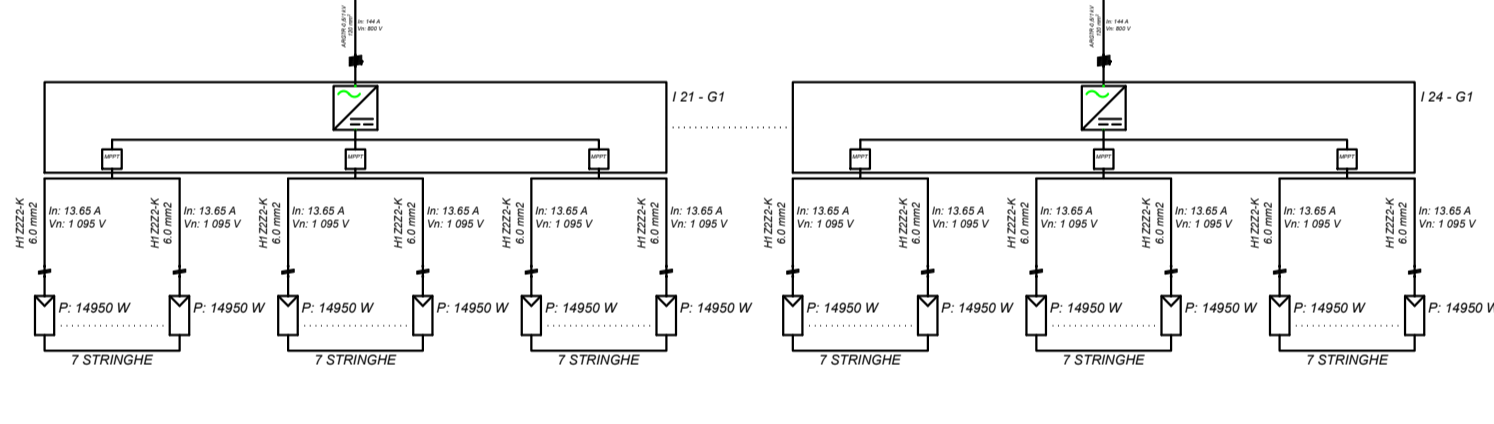
SOTTOCAMPO 2-3



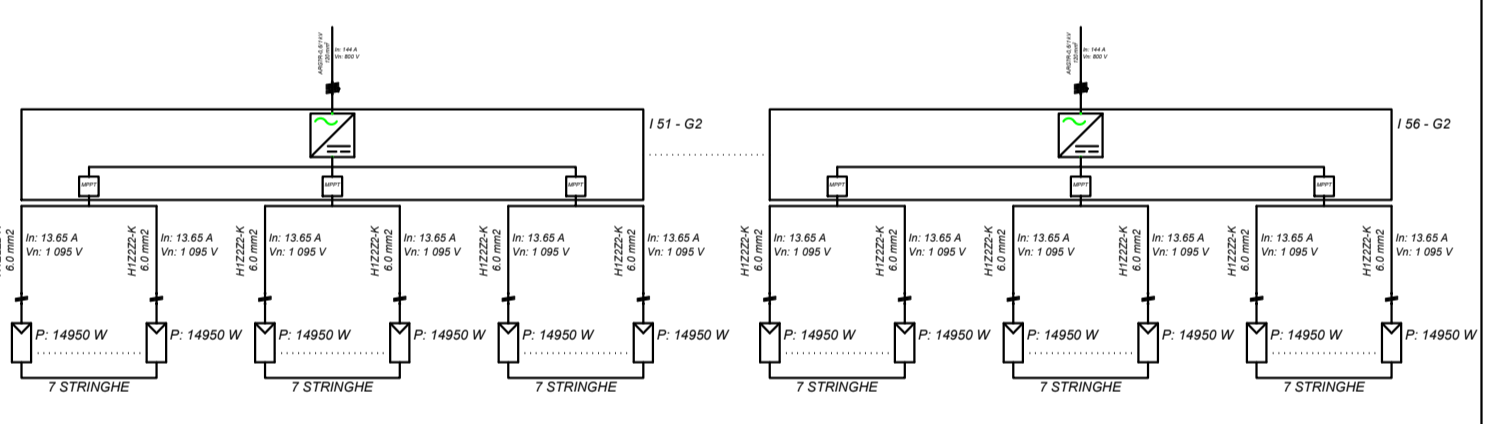
SOTTOCAMPO 3-4



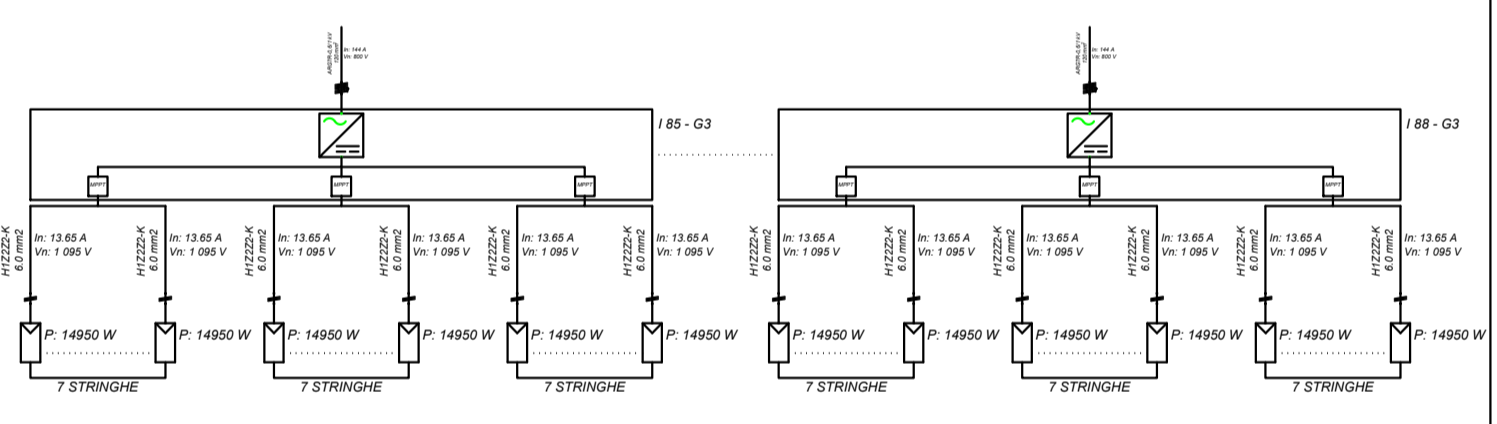
SOTTOCAMPO 1-4



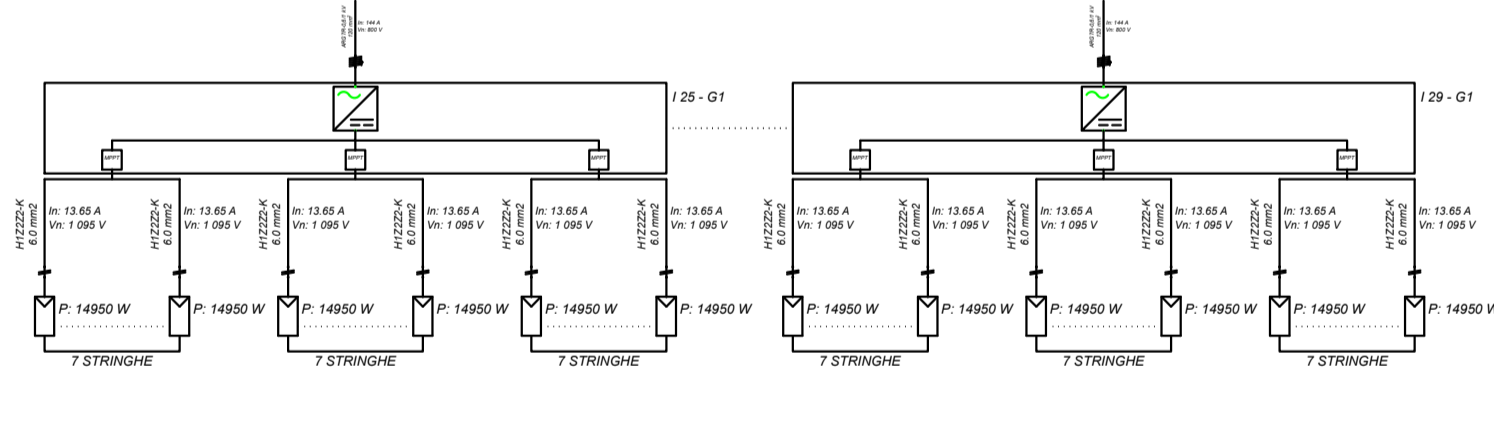
SOTTOCAMPO 2-4



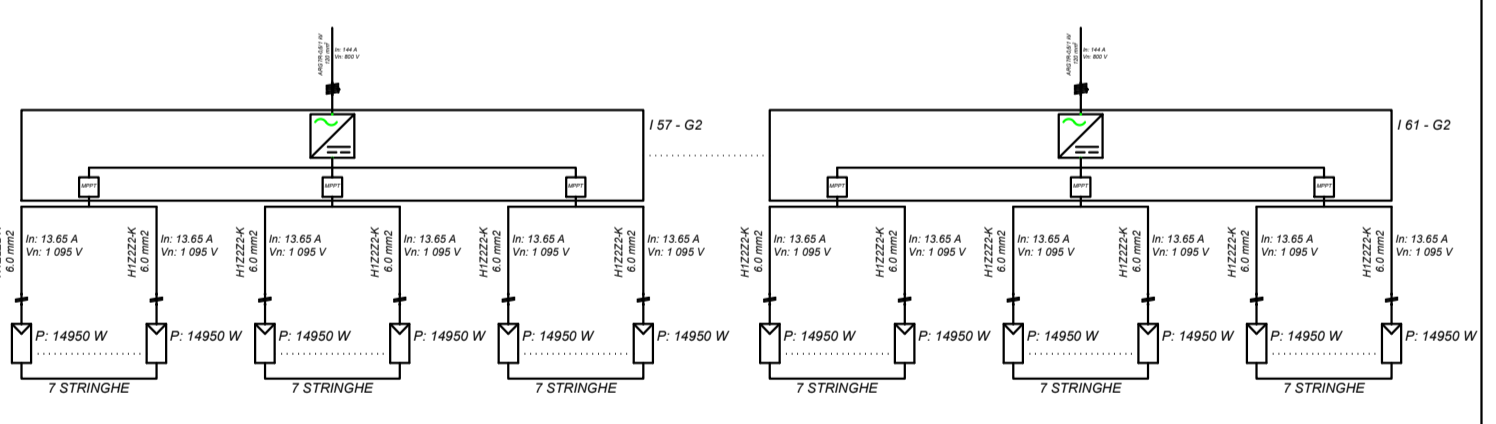
SOTTOCAMPO 3-4



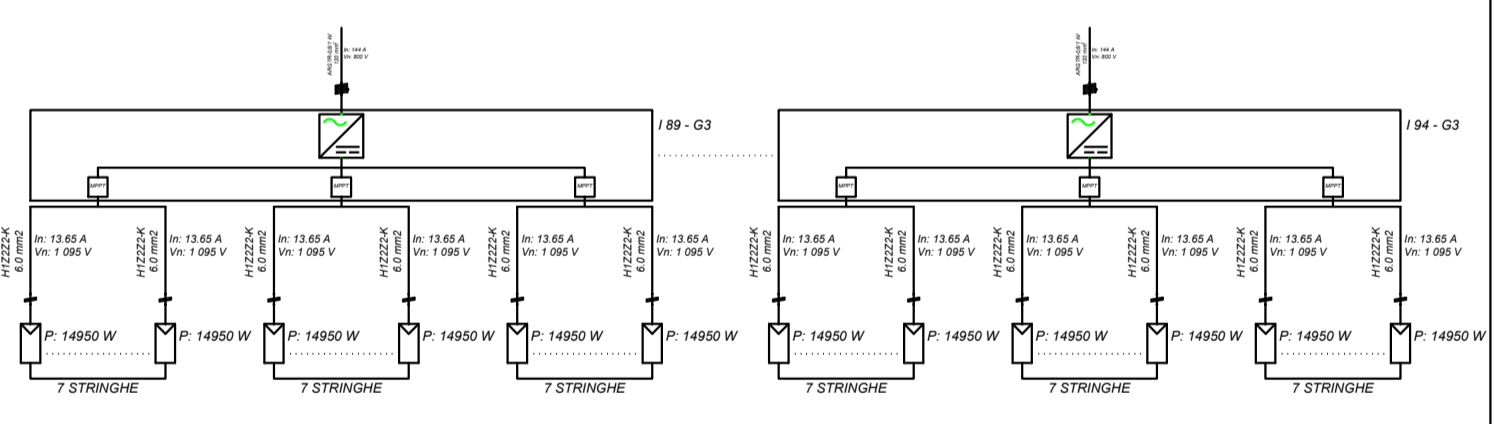
SOTTOCAMPO 1-5



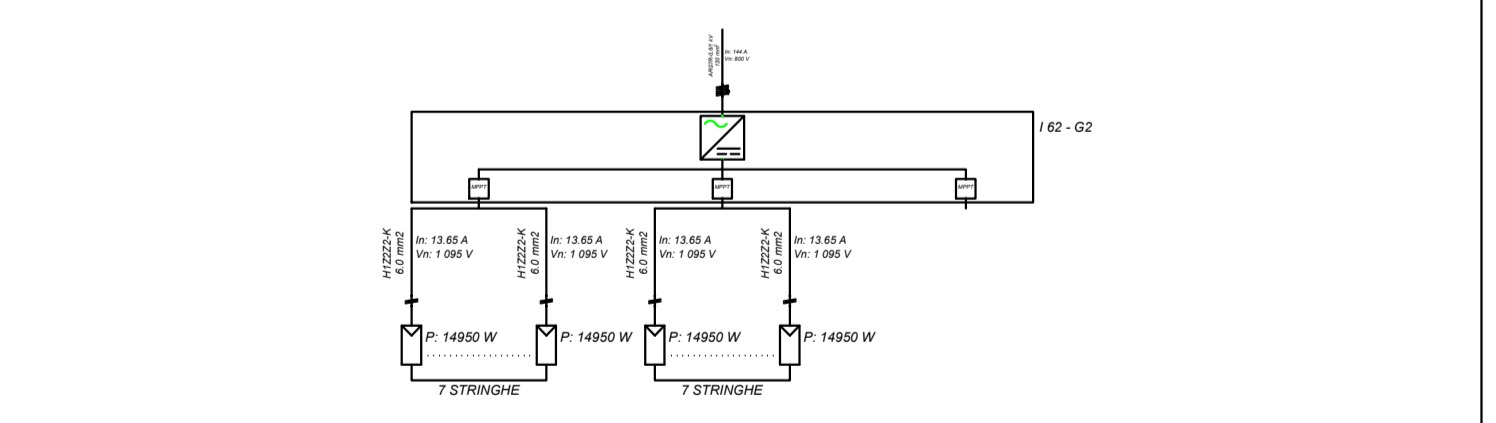
SOTTOCAMPO 2-5



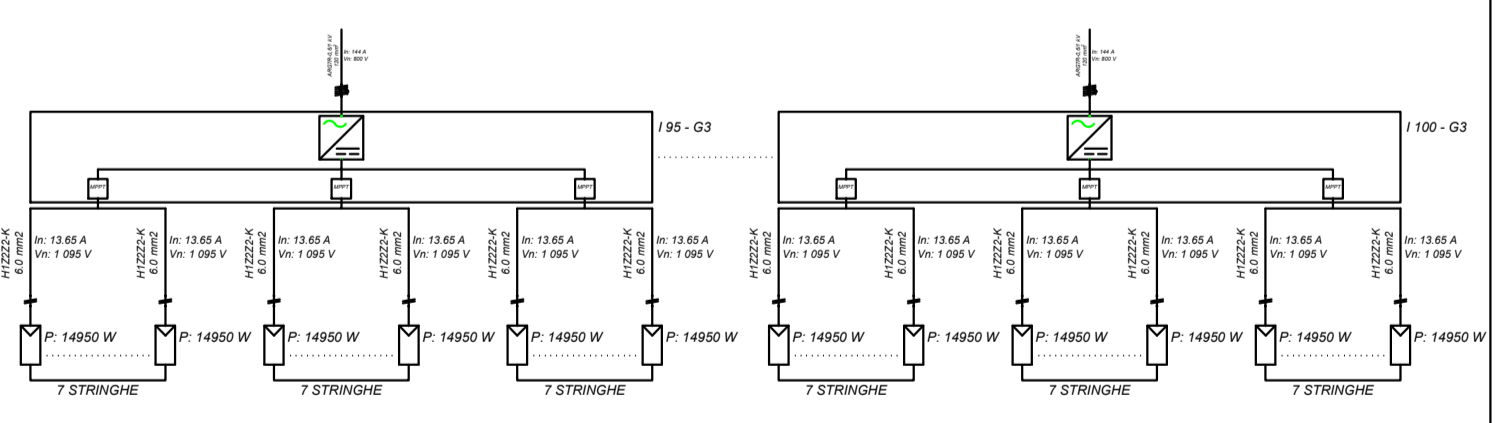
SOTTOCAMPO 3-5



SOTTOCAMPO 2-5



SOTTOCAMPO 3-6



Legenda dei simboli

	Inverter
	Stringa
	MPPT

Impianto fotovoltaico "SERRAMANNA 1"
 44902 moduli fotovoltaici da 575 Wp
 100 inverter su 16 sottocampi raggruppati in 3 campi fotovoltaici
 Potenza di picco complessiva 25818,65 kWp
 Potenza AC 20000 kW

DATI GENERALI

COMMITTENTE	Tintoretto s.r.l.
-------------	-------------------

DATI IMPIANTO

NOME IMPIANTO	FV SERRAMANNA 1
LOCALITA'	SERRAMANNA
POTENZA	25 818.650 kW

G1	CAMPO FOTOVOLTAICO 1
POTENZA	Wp,tot = 7 310.55 kW
MODULI	JINKO SOLAR, JKM575N-72HL4, 575.0 W
INVERTER	Huawei, SUN2000-215KTL-H3, 200 000 W (3 MPPT)
Configurazione	20 Inverter x (5 x 26; 5 x 26; 5 x 26) 9 Inverter x (7 x 26; 7 x 26; 7 x 26)

G2	CAMPO FOTOVOLTAICO 2
POTENZA	Wp,tot = 8 551.40 kW
MODULI	JINKO SOLAR, JKM575N-72HL4, 575.0 W
INVERTER	Huawei, SUN2000-215KTL-H3, 200 000 W (3 MPPT)
Configurazione	15 Inverter x (5 x 26; 5 x 26; 5 x 26) 13 Inverter x (7 x 26; 7 x 26; 7 x 26) 1 Inverter x (7 x 26; 7 x 26; 0 x 26)

G3	CAMPO FOTOVOLTAICO 3
POTENZA	Wp,tot = 9 956.70 kW
MODULI	JINKO SOLAR, JKM575N-72HL4, 575.0 W
INVERTER	Huawei, SUN2000-215KTL-H3, 200 000 W (3 MPPT)
Configurazione	20 Inverter x (5 x 26; 5 x 26; 5 x 26) 16 Inverter x (7 x 26; 7 x 26; 7 x 26)

02/2022	00	EMISSIONE PER APPROVAZIONE	MP	TL	PF
DATE/DATA	REV.	COMMENTS/COMMENTI	DRAWN BY	CHECKED BY	APPROVED BY

Ing. Michele Pigiariu

TINTORETTO s.r.l.
 via Vittori 20
 48018 Faenza (RA)

Association Number 511

Schema elettrico unifilare DC	DIM.
IMPIANTO AGROVOLTAIICO PER LA PRODUZIONE DI ENERGIA DA FONTE SOLARE NEI COMUNI DI SERRAMANNA E SAMASSI (SU)	A1
DOCUMENT NAME	DRAWING SCALE
PD-Tav02	-
	PAGE
	1 of 1