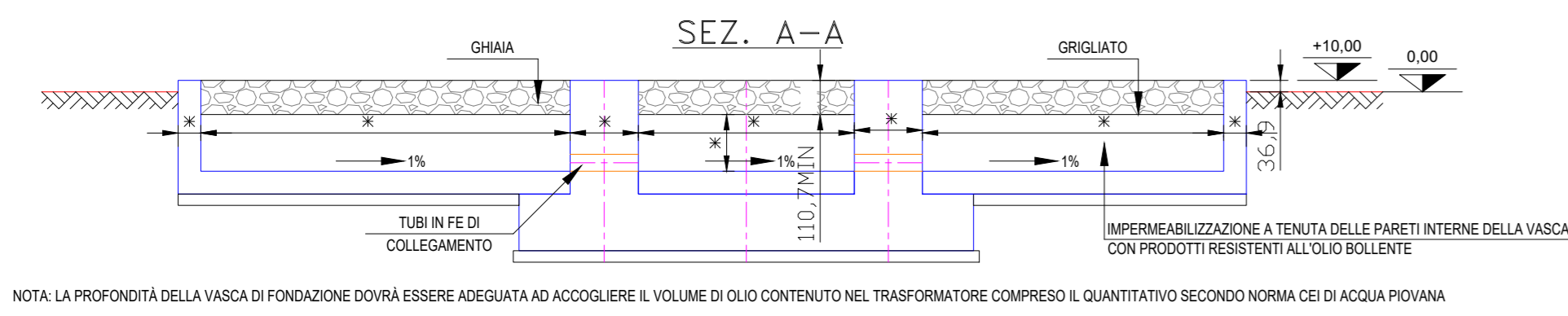
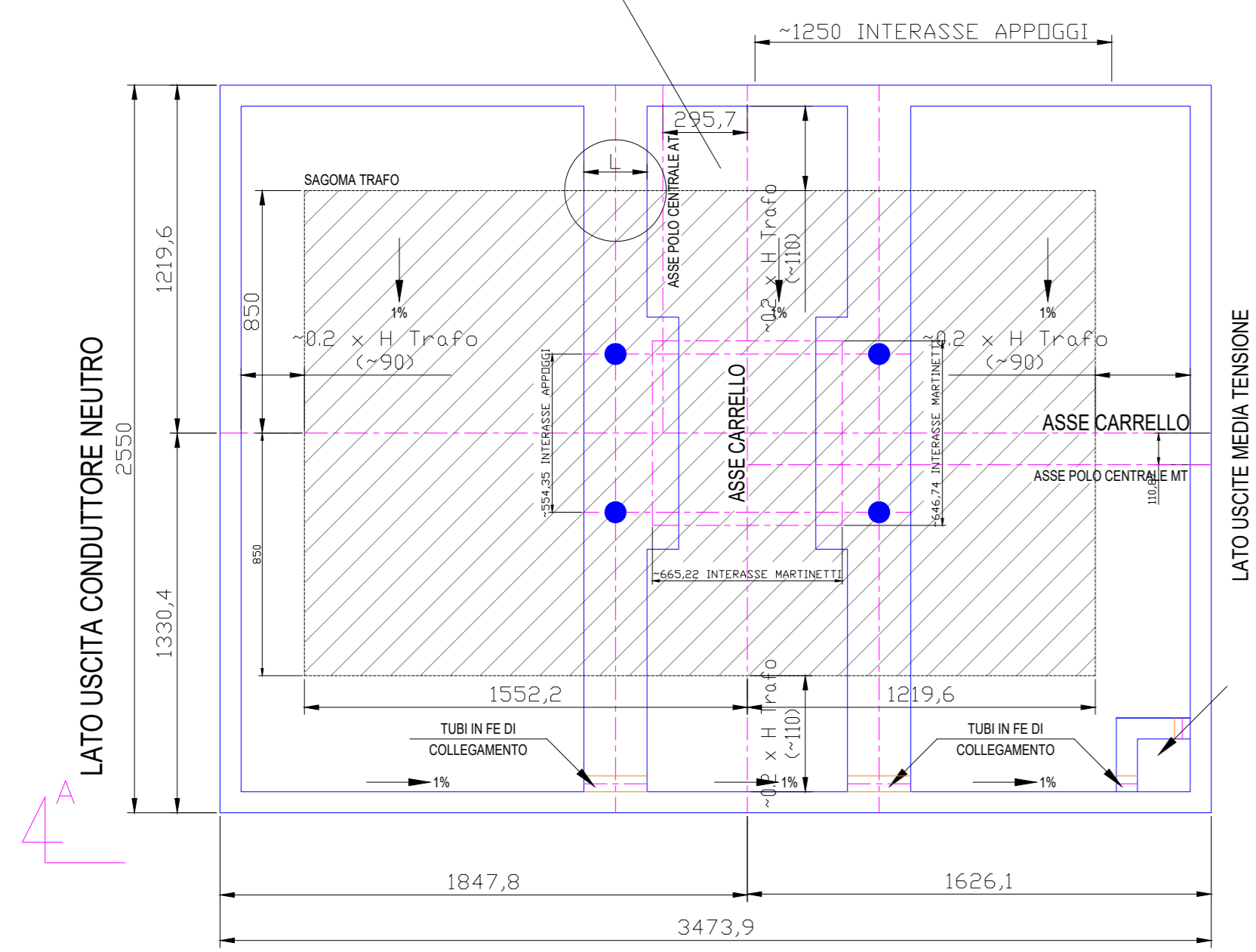
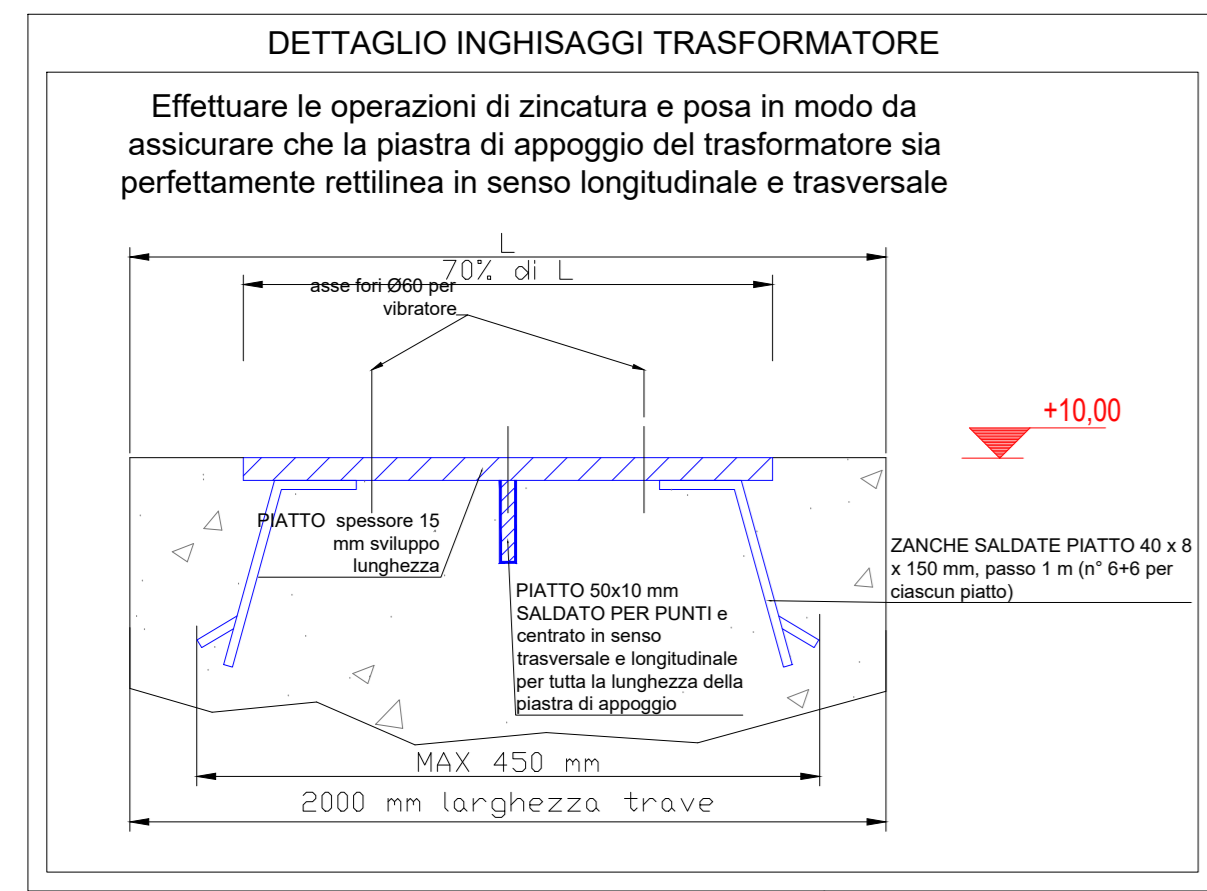
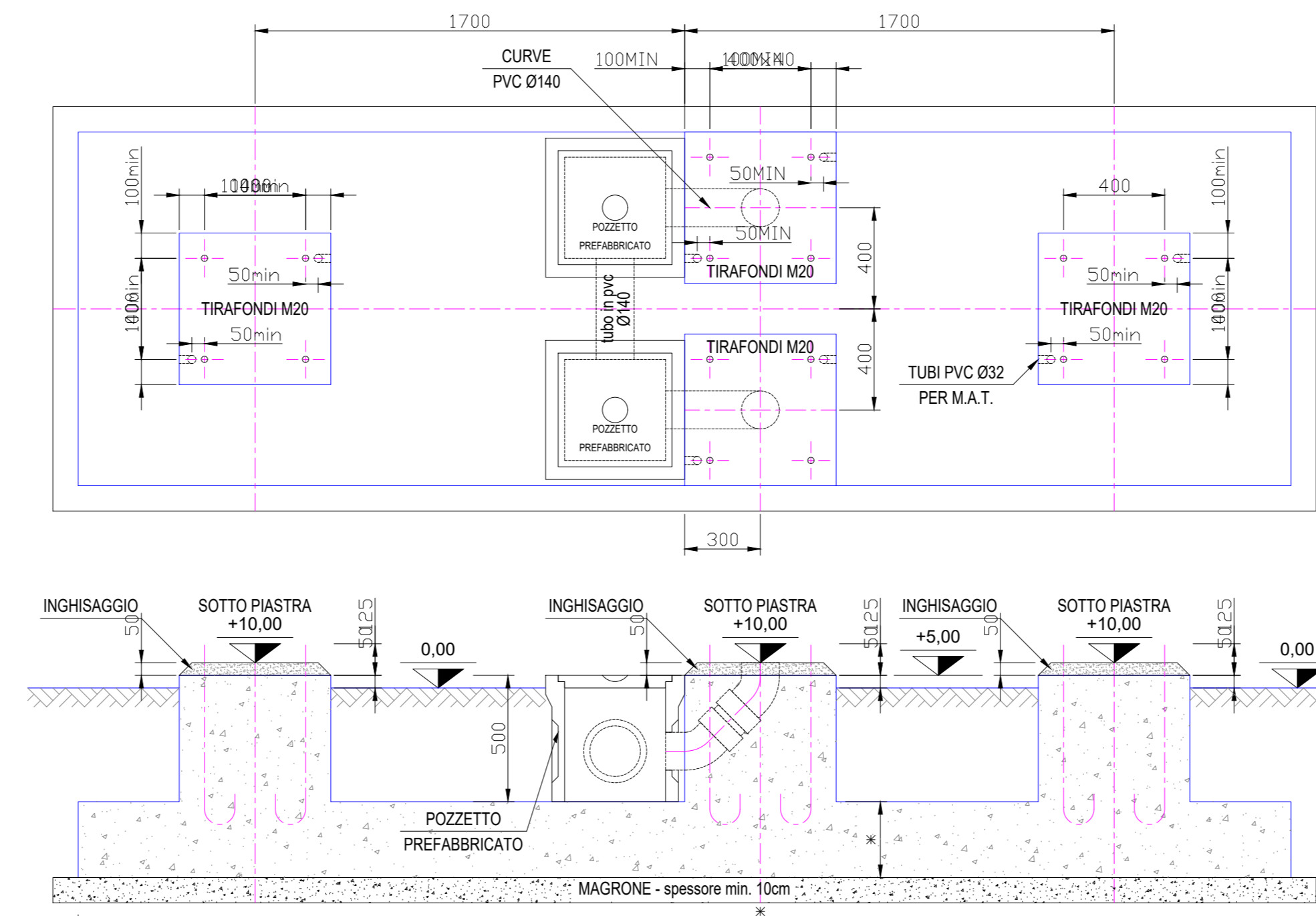


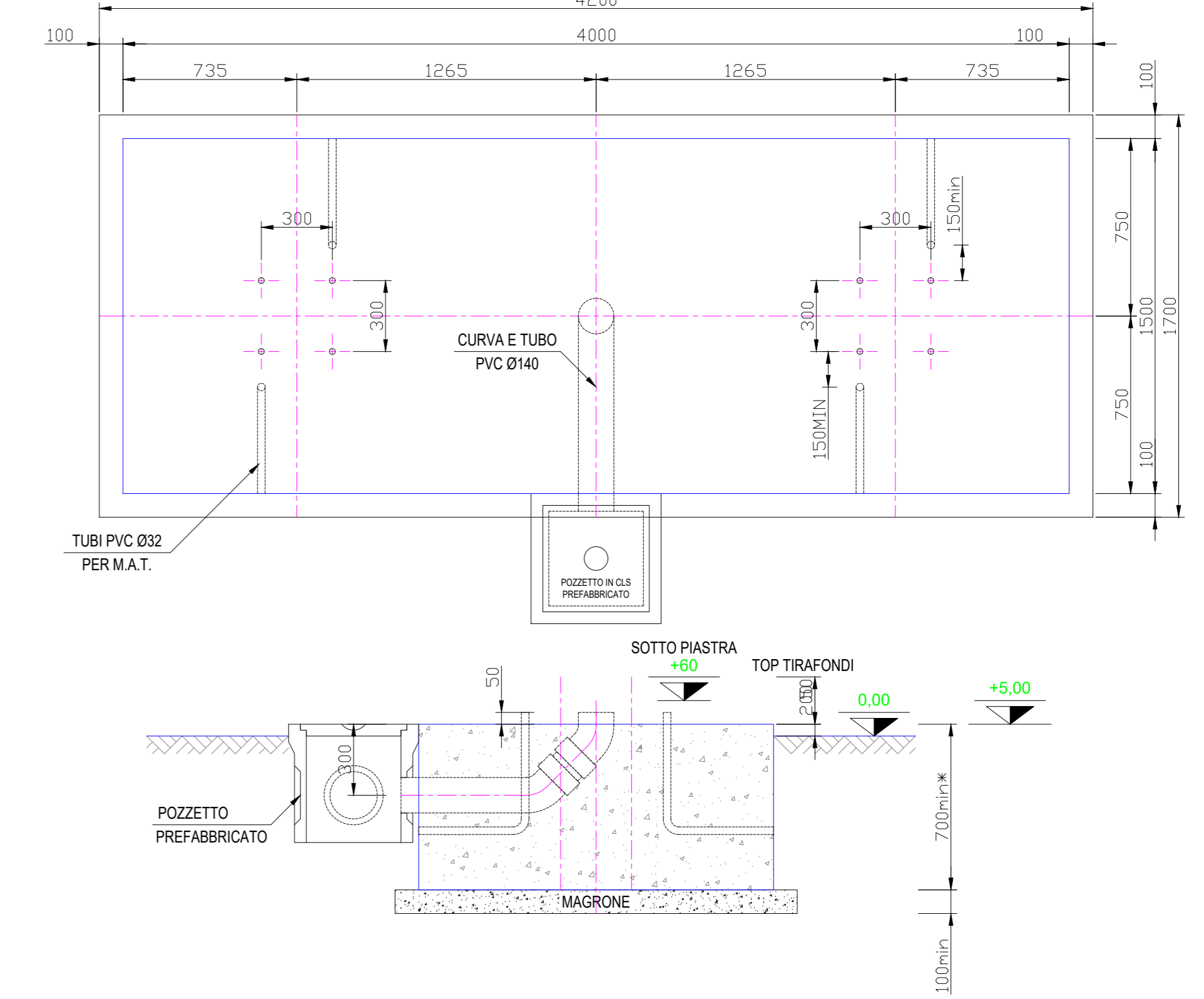
SUPPORTO TRASFORMATORE



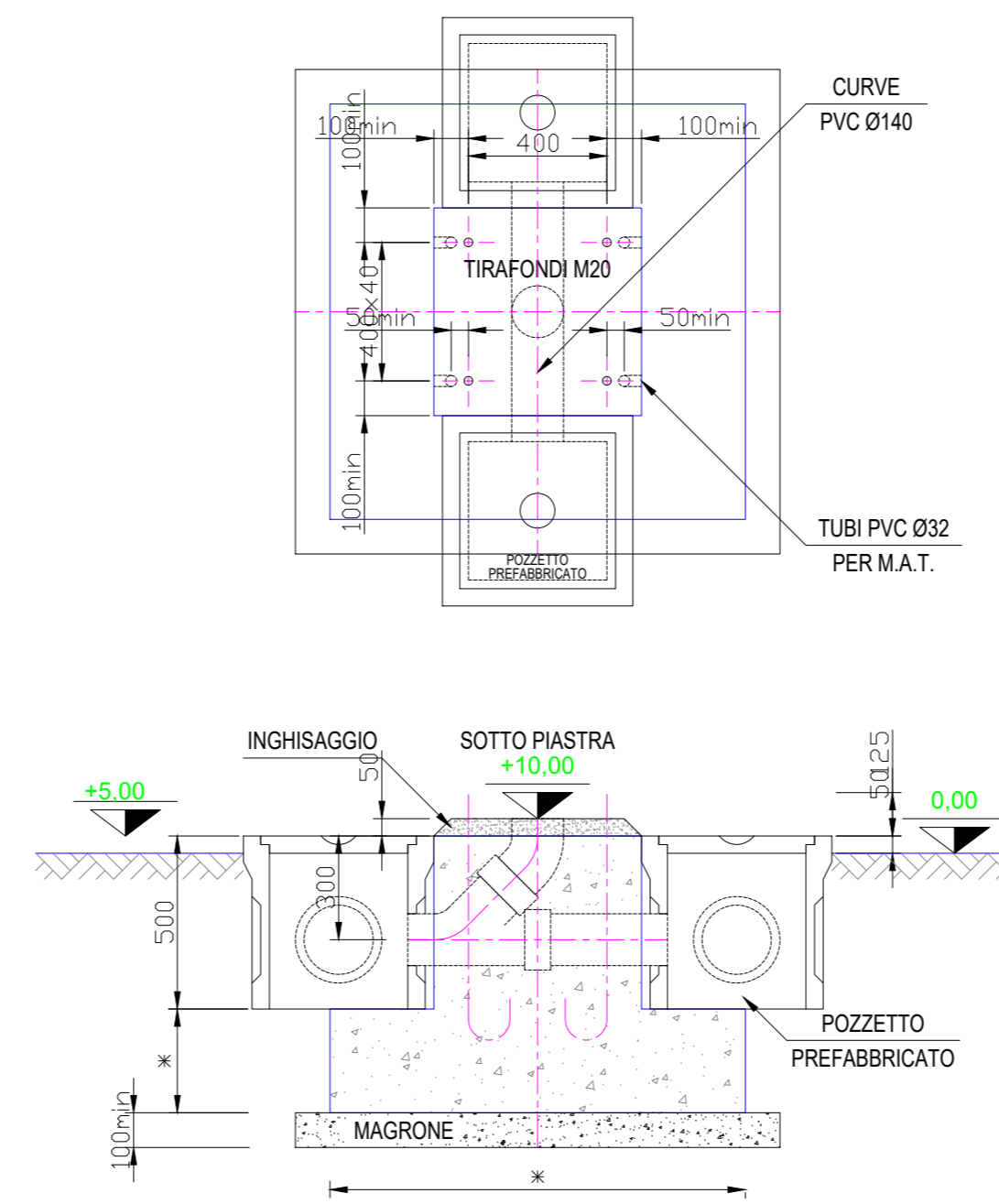
SEZIONATORE DI LINEA



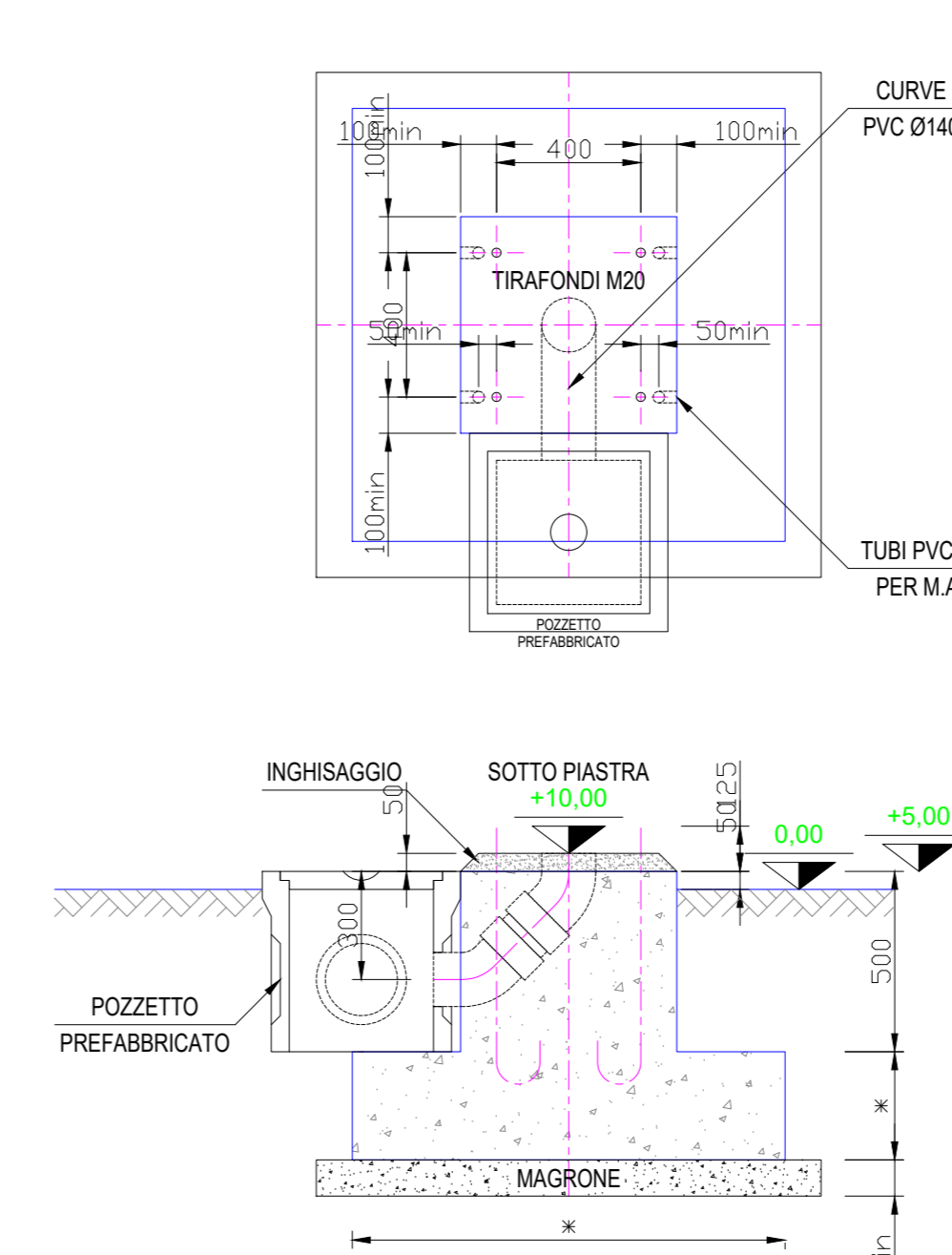
INTERRUTTORE TRIPOLARE



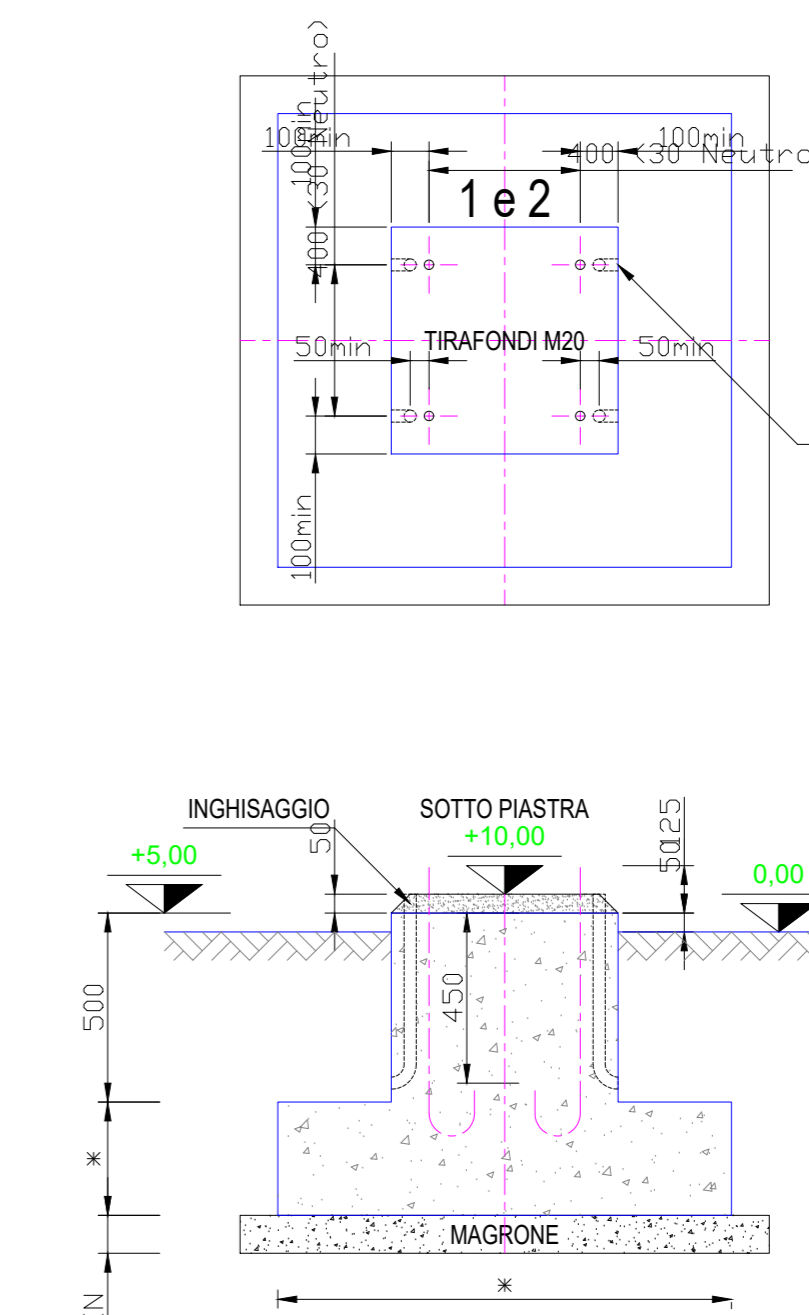
TA



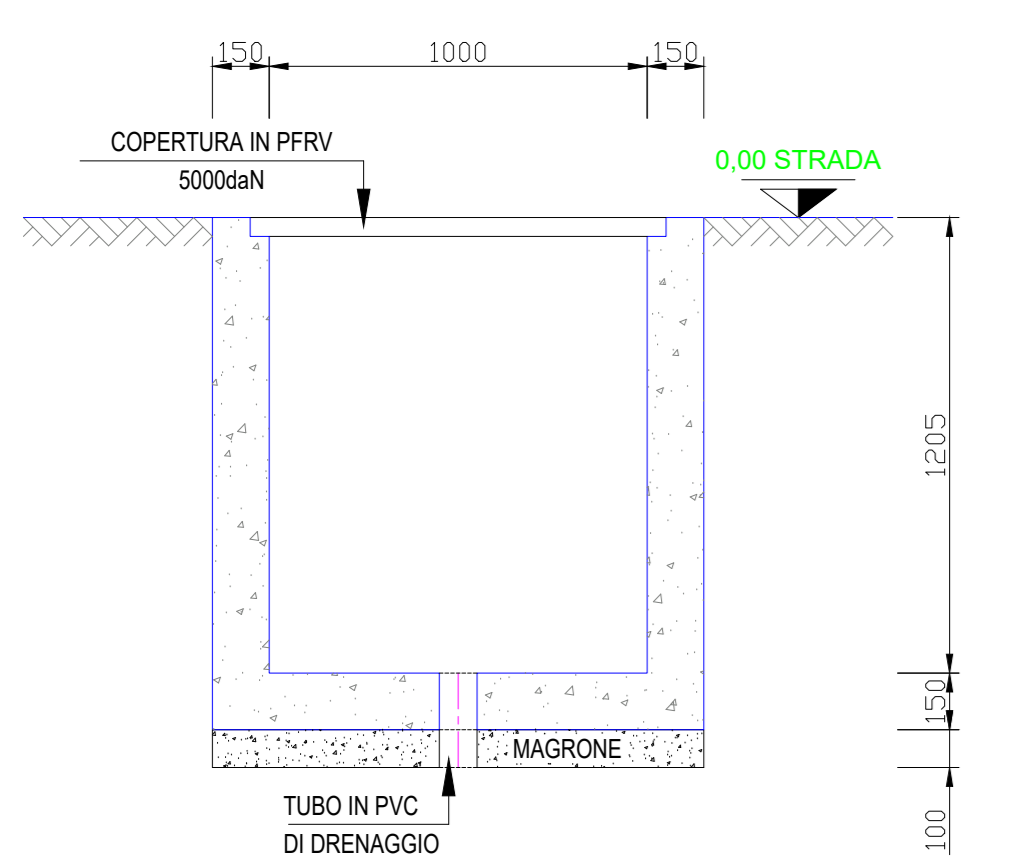
TV



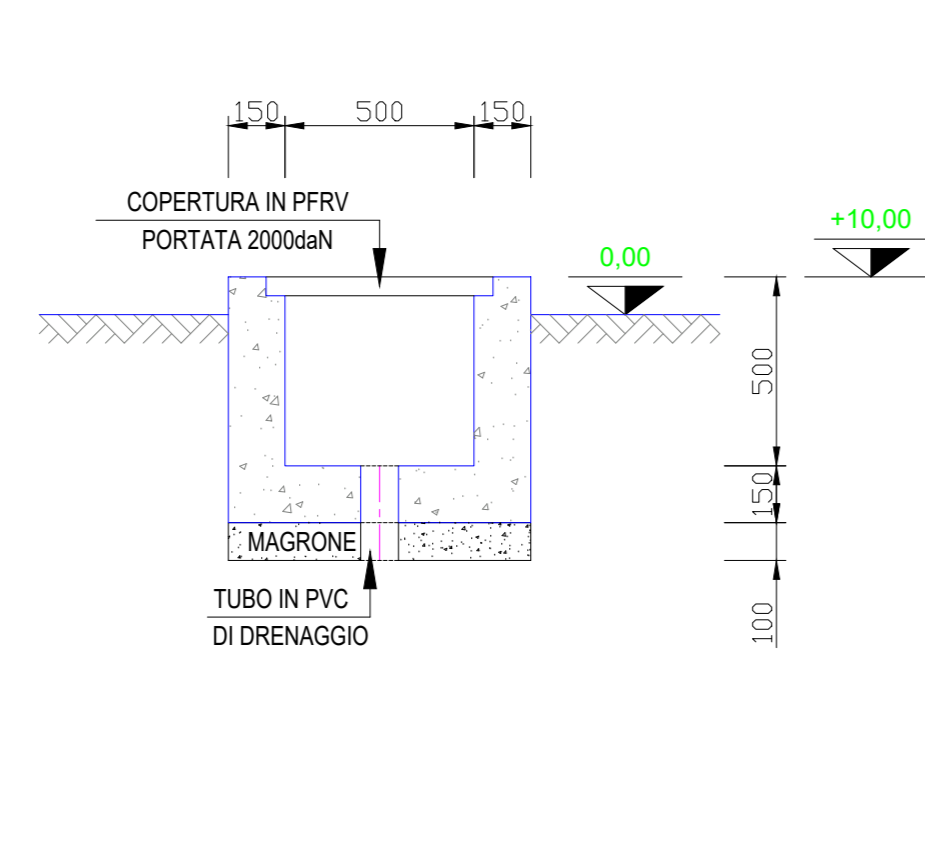
PORTALE DI COLLEGAMENTO SCARICATORE



TIPOICO CUNICOLI M.T.



TIPOICO CUNICOLI B.T.



VERDE 3 SRL

PROGETTO PER LA REALIZZAZIONE DI UN IMPIANTO AGRIVOLTAICO DI POTENZA NOMINALE PARI A 11.980,65 kWp DENOMINATO LARINO 6 - UBICATO IN LOCALITA' PIANE DI LARINO NEL COMUNE DI LARINO E IN LOCALITA' FORCONI NEL COMUNE DI URURI E SAN MARTINO IN PENSILIS

SCM Ingegneria
 Tecnico
 Ing. Daniele Cavallo

TAVOLA	TITOLO	COMMESSA	TIPOLOGIA
08d	PARTICOLARI COSTRUTTIVI -	12903	G
REVISIONE	FONDAMENTI APPARECCHIATURE	CODICE ELABORATO	G12903A - TAV - 08d
00	AT	SOSTITUISCE	SOSTITUITO DA
FOGLIO		NOME FILE	SCALA
1/1		G12903A-TAV08d.dwg	1:20
REV.	DATA	MODIFICA	DESSIGNATO
00	30/07/2021	Emissione	Cavallo
01			Cavallo
02			
03			
04			
05			