

# IMPIANTO DI RETE PER LA CONNESSIONE A 15 KV DELL'IMPIANTO BESS

UBICATO NEL COMUNE DI ALESSANDRIA (AL)  
STRADA BOLLA, FRAZ. SPINETTA MARENGO

Procedura autorizzativa (Decreto Regionale) N° \_\_\_\_\_ del \_\_\_\_\_

## PROGETTO DEFINITIVO

## DOCUMENTAZIONE GENERALE

## CABINE ELETTRICHE – CABINA GENERALE MT - BESS

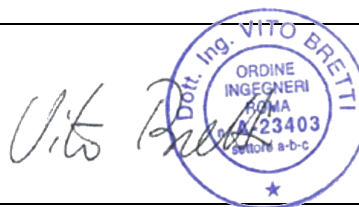
### IDENTIFICAZIONE ELABORATO

Livello prog.	Codice rintracciabilità	Tipo docum.	N°Elaborato	N°Foglio	Tot.Fogli	Nome file	Scala	Data
PD	298317281	01	94	2	2	-	1:50	11/04/2022

### Revisione

Revisione	Descrizione	Redatto	Controllato	Approvato	Data
00	Prima emissione	D.Sacchi	A.Fata/M.Gallina	V.Bretti	11/04/2022

Progettista: **GOLDER** | **wsp**



GESTORE RETE ELETTRICA

Firma:

\_\_\_\_\_

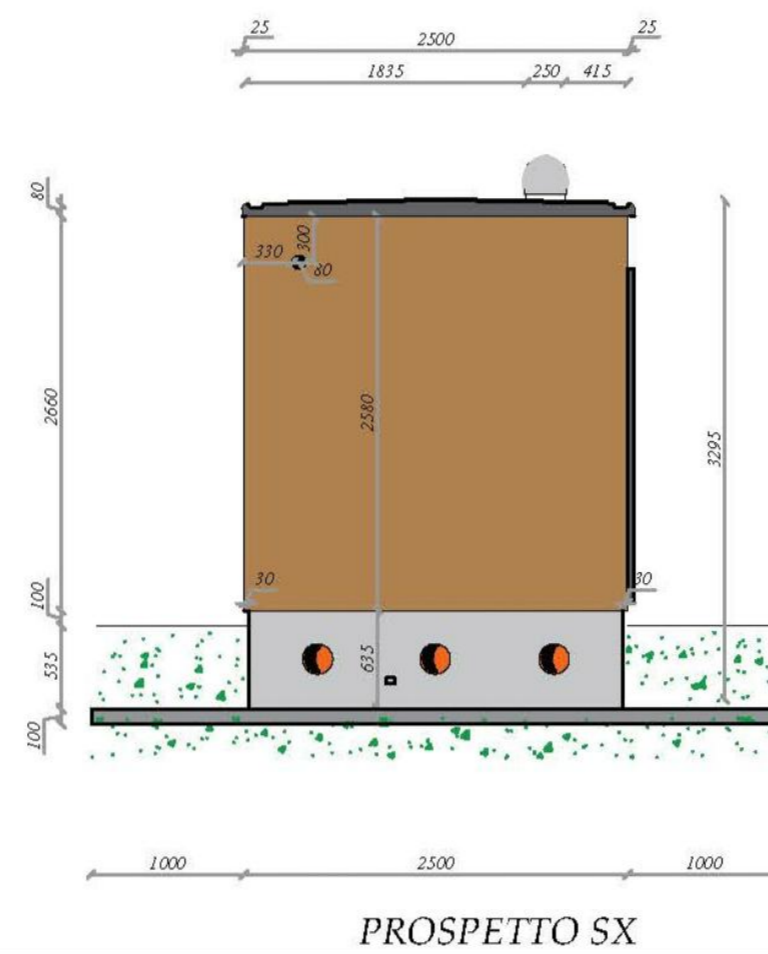
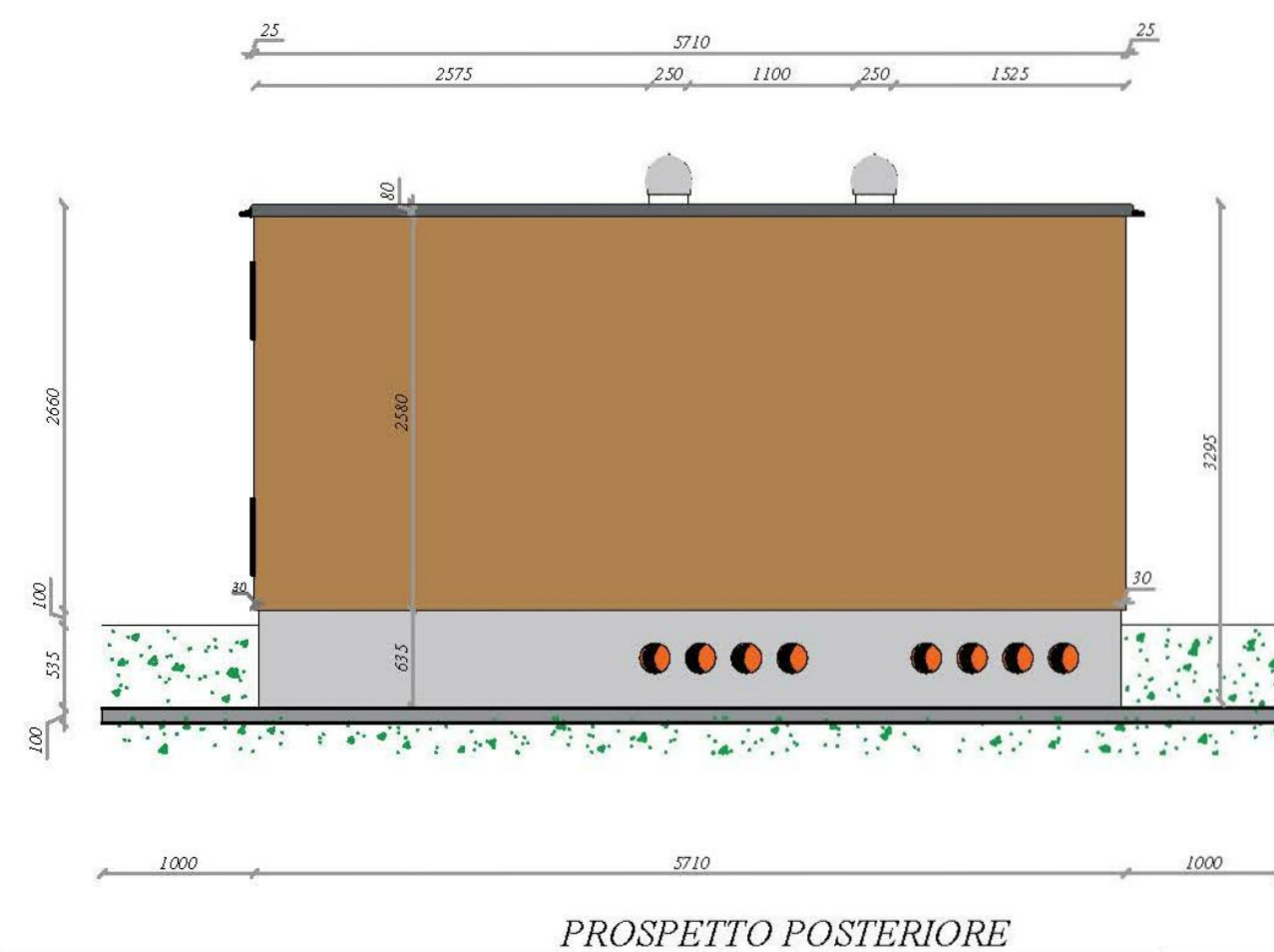
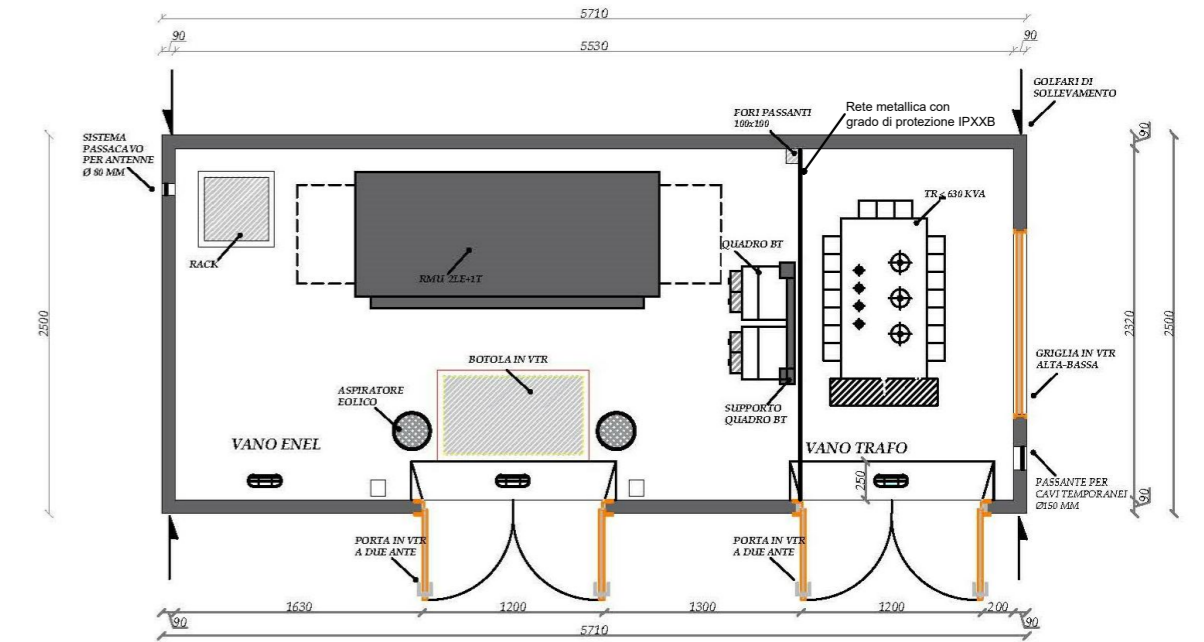
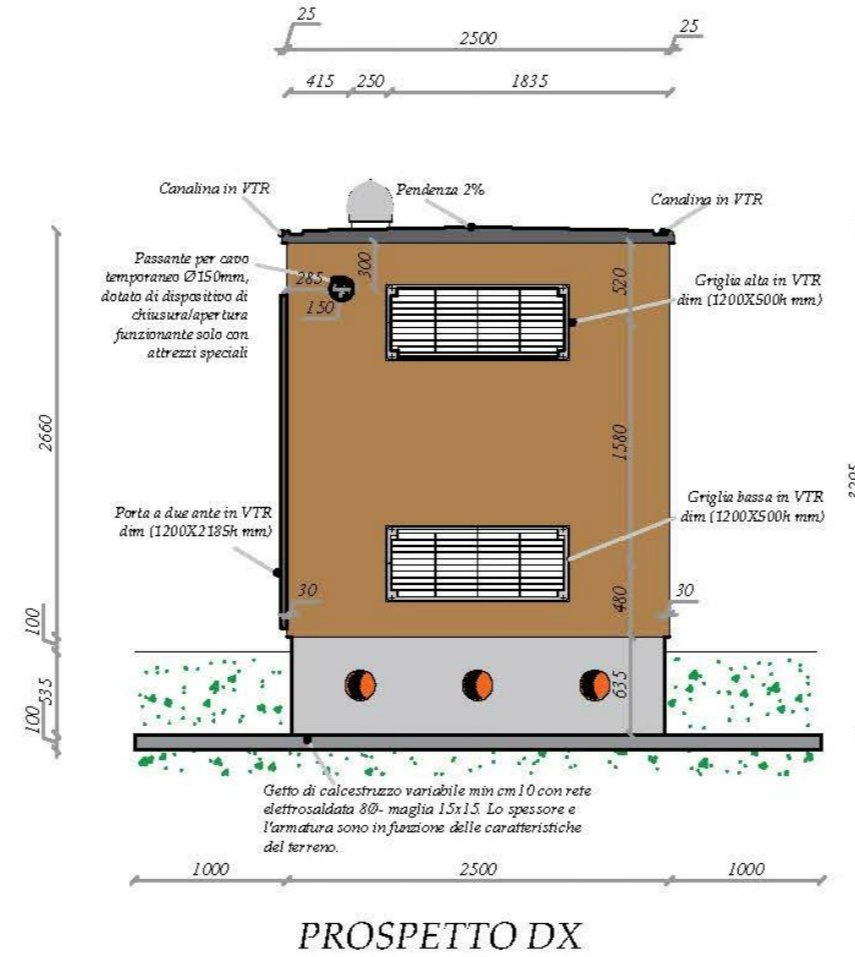
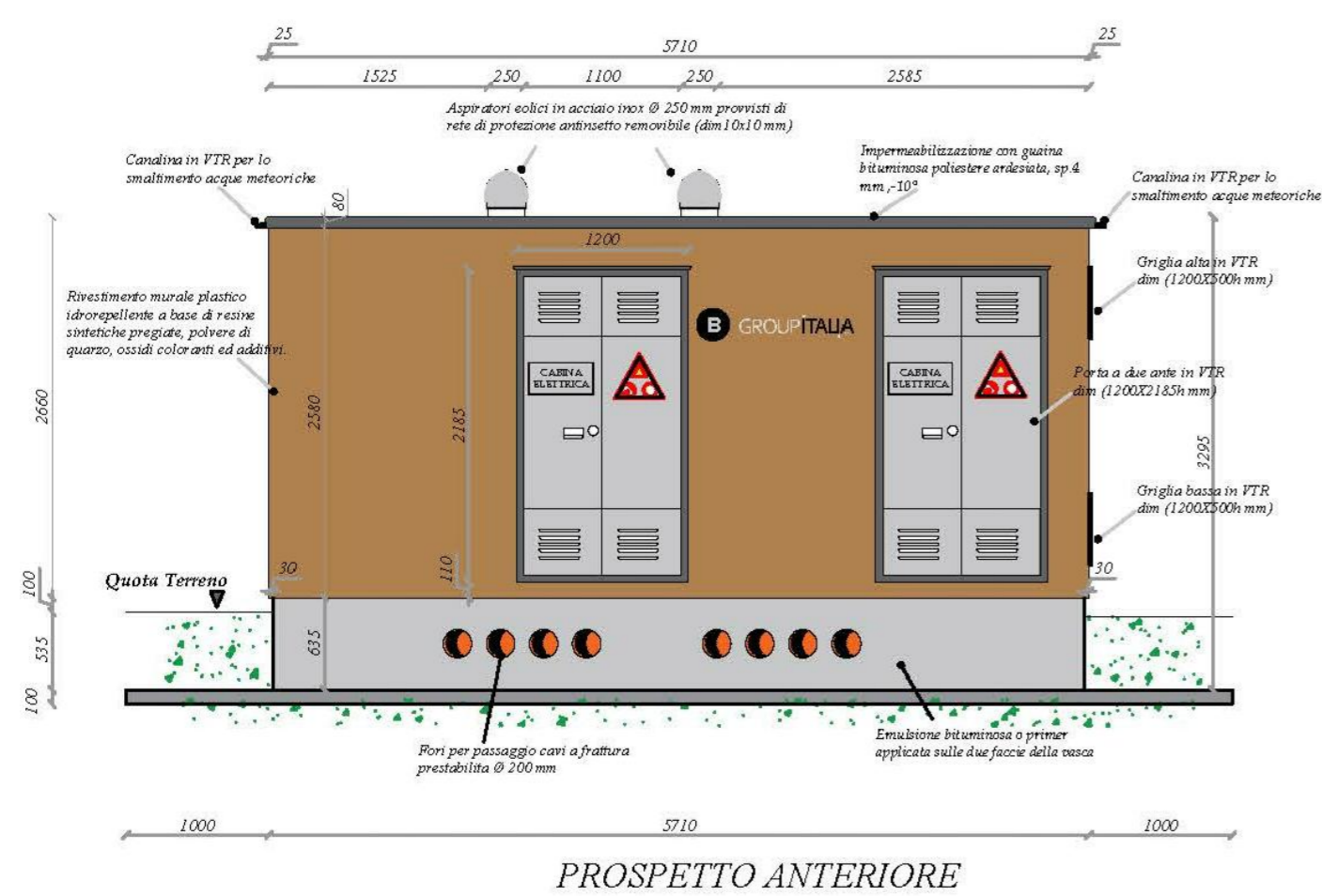
Proponente: ENEL GREEN POWER ITALIA S.R.L.



Firma:

\_\_\_\_\_

# CABINE ELETTRICHE - CABINA GENERALE MT - BESS - DG2061 ed.VIII



Dr. Ing. VITO BRETTI  
ORDINE INGEGNERI  
EMILIA ROMAGNA  
N. 23403  
CANTONE a-b-c

00	11/04/2022	Emissione Definitiva	M. Gallina	D. Sacchi	A. Fata	V. Bretti					
REV.	DATE	DESCRIPTION	PREPARED	CHECKED	APPROVED						
CONTRACTOR'S LOGO		PROJECT: <b>Spinetta Marengo FV (13131)</b>									
GOLDER   wsp		FILE NAME:									
enel		CLASSIFICATION: <b>Company</b>	FORMAT: <b>A2</b>	SCALE: <b>1:50</b>	PLOT SCALE: <b>1:1</b>	SHEET: <b>2 di / of 2</b>					
Engineering & Construction		UTILIZATION SCOPE: <b>Basic Design</b>		TITLE: <b>CABINE ELETTRICHE CABINA GENERALE MT BESS</b>							
GRE VALIDATION		GRE CODE									
VALIDATED BY	PE EGP										
VERIFIED BY	Discipline EGP	GROUP	FUNCTION	TYPE	ISSUER	COUNTRY	TEC.	PLANT	SYSTEM	PROGRESSIVE	REVISION
COLLABORATORS		GRE	EEC	D27	ITP	13	13	1000	09	400	