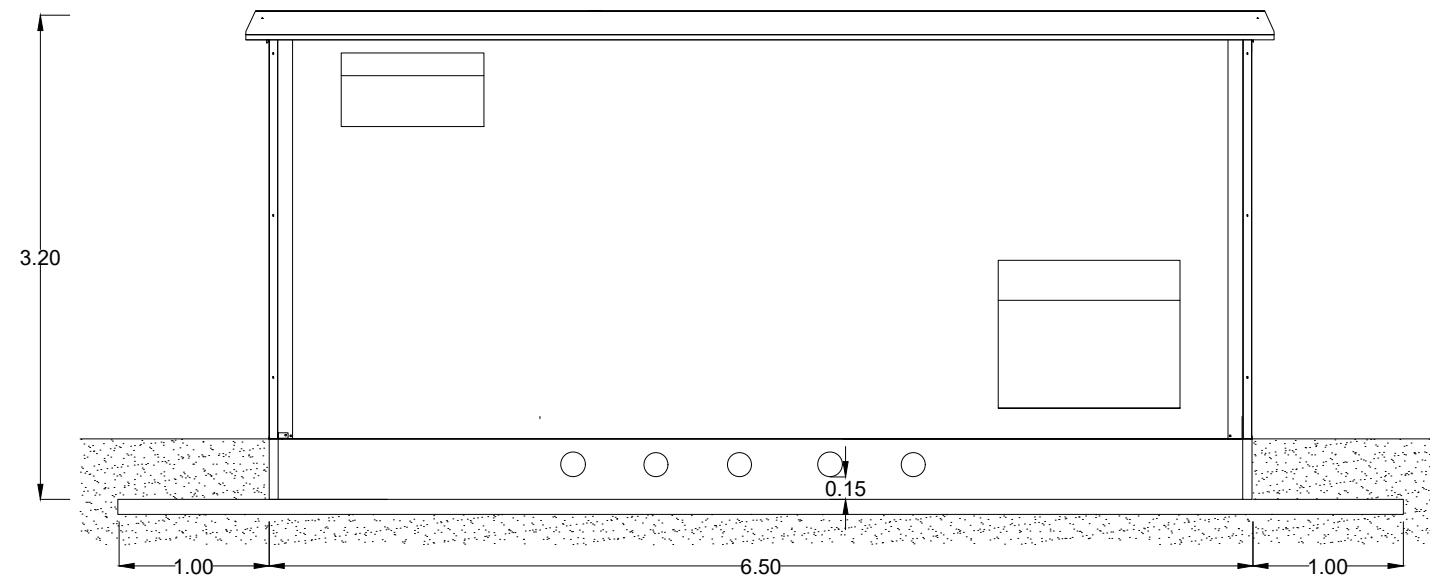


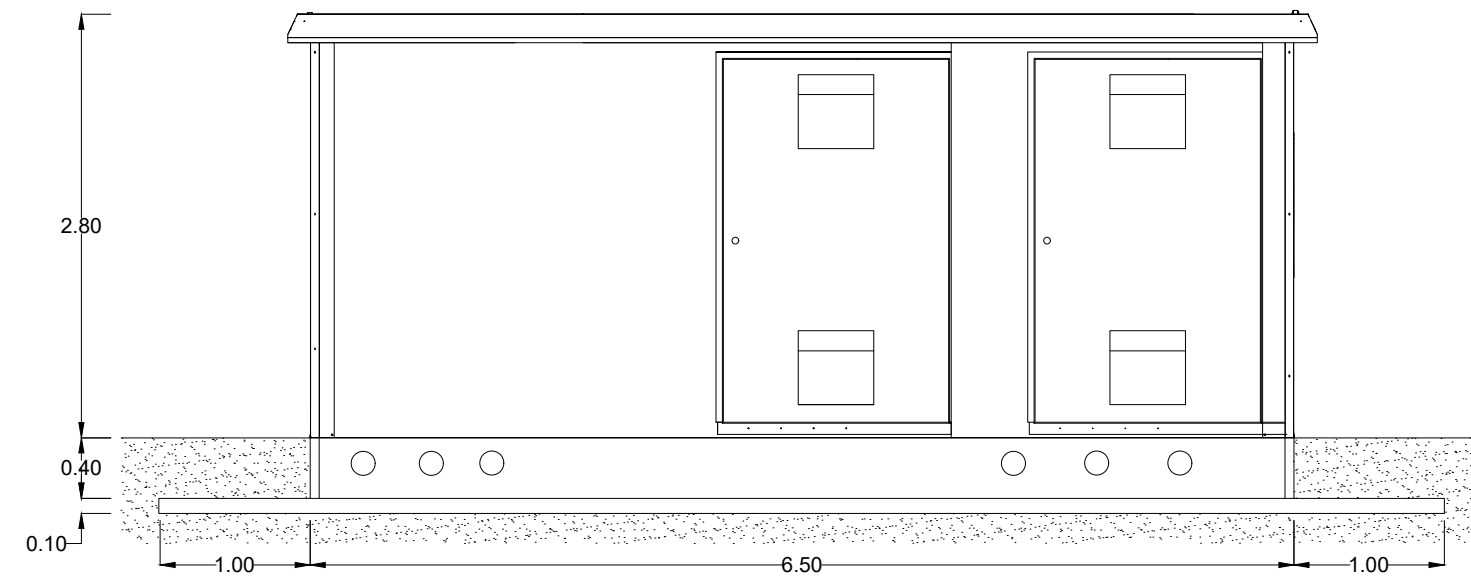
CABINE ELETTRICHE - CONVERSION UNIT 500 kVA

Scala 1:50

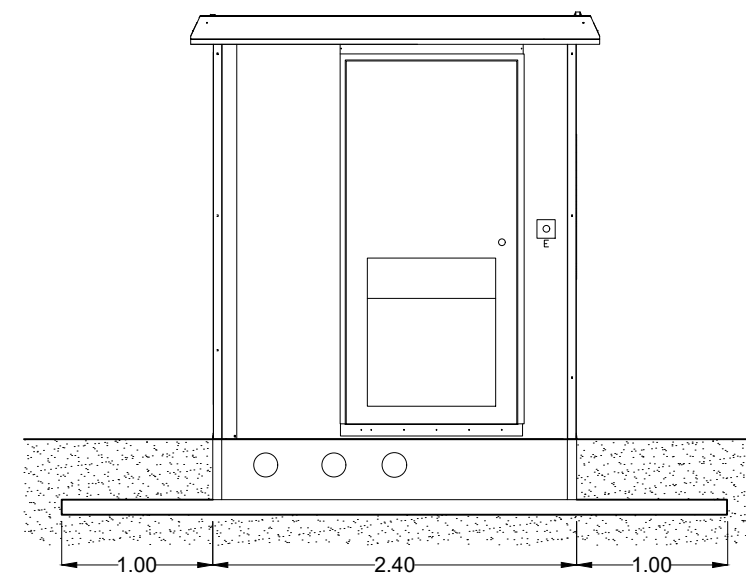
PROSPETTO POSTERIORE



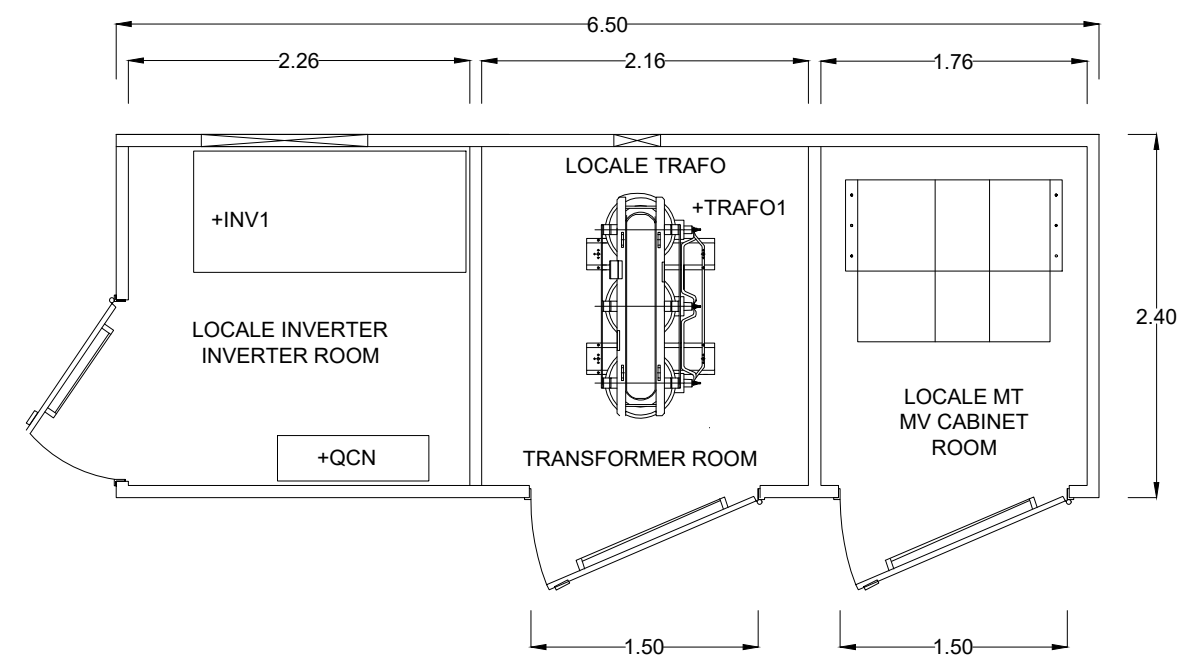
PROSPETTO FRONTALE



PROSPETTO LATERALE



PIANTA DALL'ALTO



NOTE

Misure espresse in metri

Vito Bretti
 Ordine Ingegneri
 ROMA
 n. 23403
 Categoria 8-b-c

REV.	DATE	DESCRIPTION	PREPARED	CHECKED	APPROVED
01	13/04/2022	Rev.01	D.Sacchi	A.Fata	M.Gallina V.Bretti
00	15/07/2021	Emissione Definitiva	D.Sacchi	A.Fata	V.Bretti

CONTRACTOR'S LOGO GOLDER wsp		PROJECT: Spinetta Marengo FV (13131)				
enel		CLASSIFICATION: Company	FORMAT: A2	SCALE: 1:50	PLOT SCALE: 1:1	SHEET: 1 di / of 2
Engineering & Construction GRE VALIDATION		UTILIZATION SCOPE: Basic Design	TITLE: CABINE ELETTRICHE CONVERSION UNIT			
VALIDATED BY: PE EGP	GRE CODE					
VERIFIED BY: Discipline EGP	GROUP: GRE	FUNCTION: EEC	TYPE: D27	ISSUER: ITP	COUNTRY: 13131	TEC. 1000
COLLABORATORS:	4701					