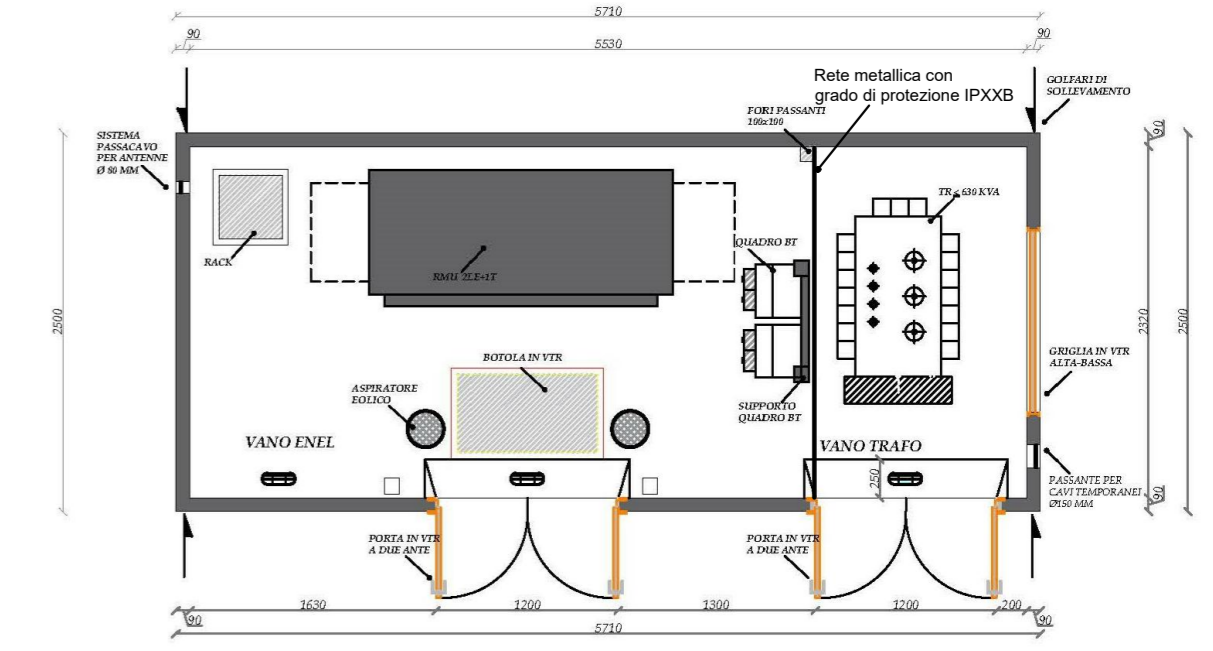
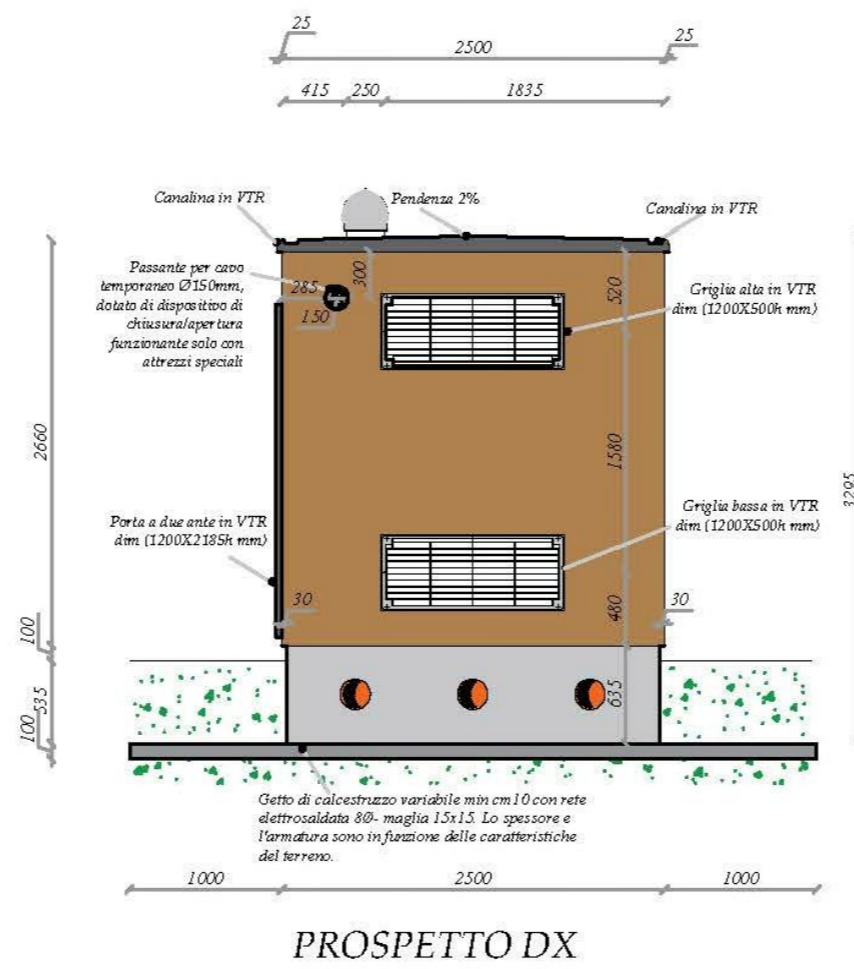
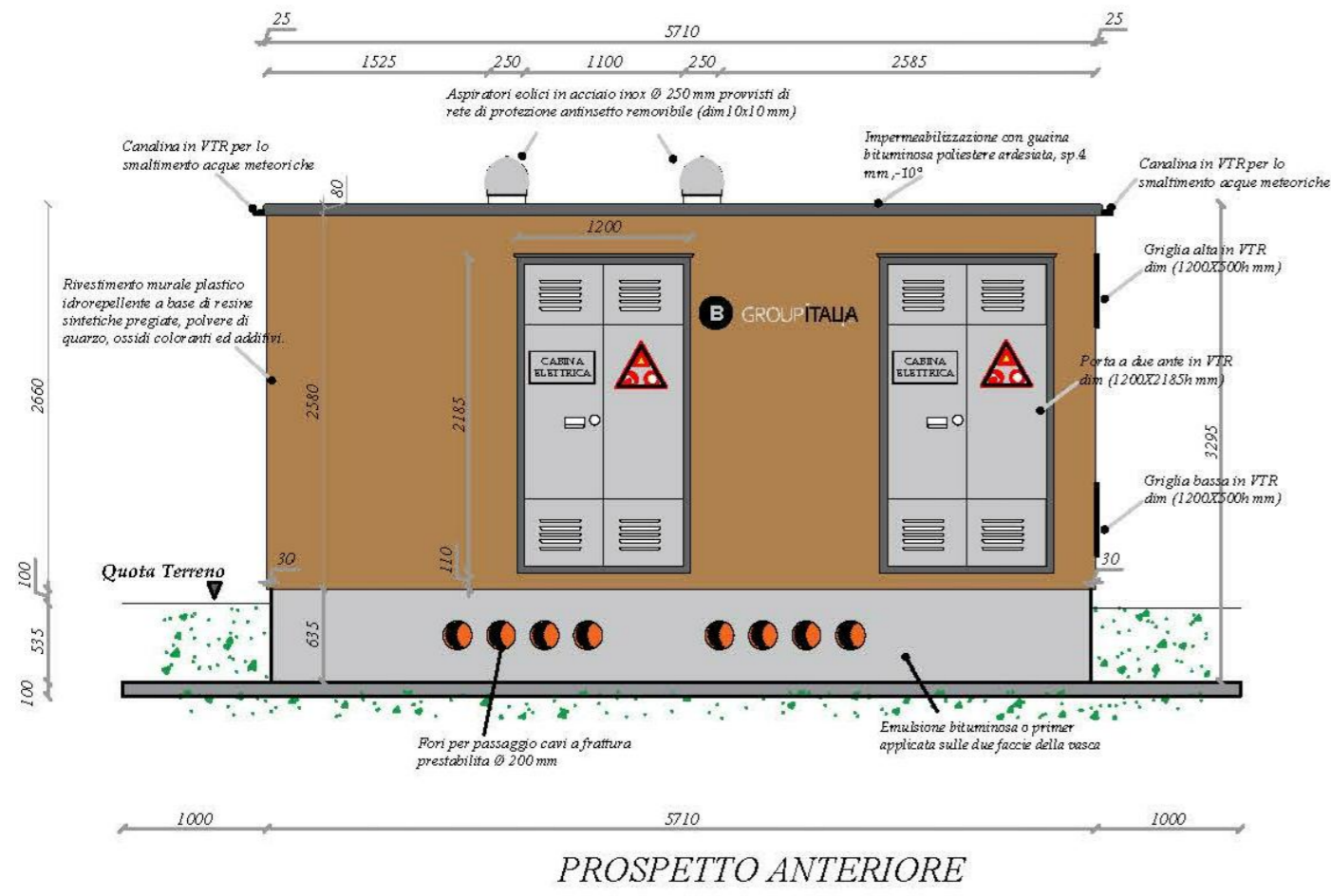
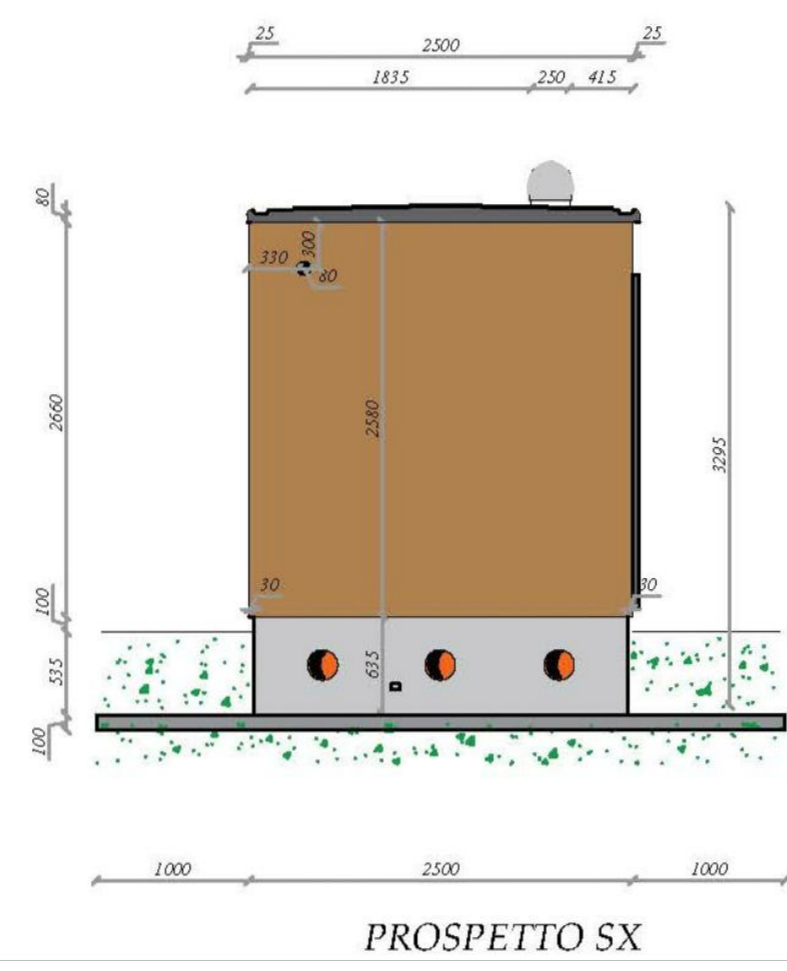
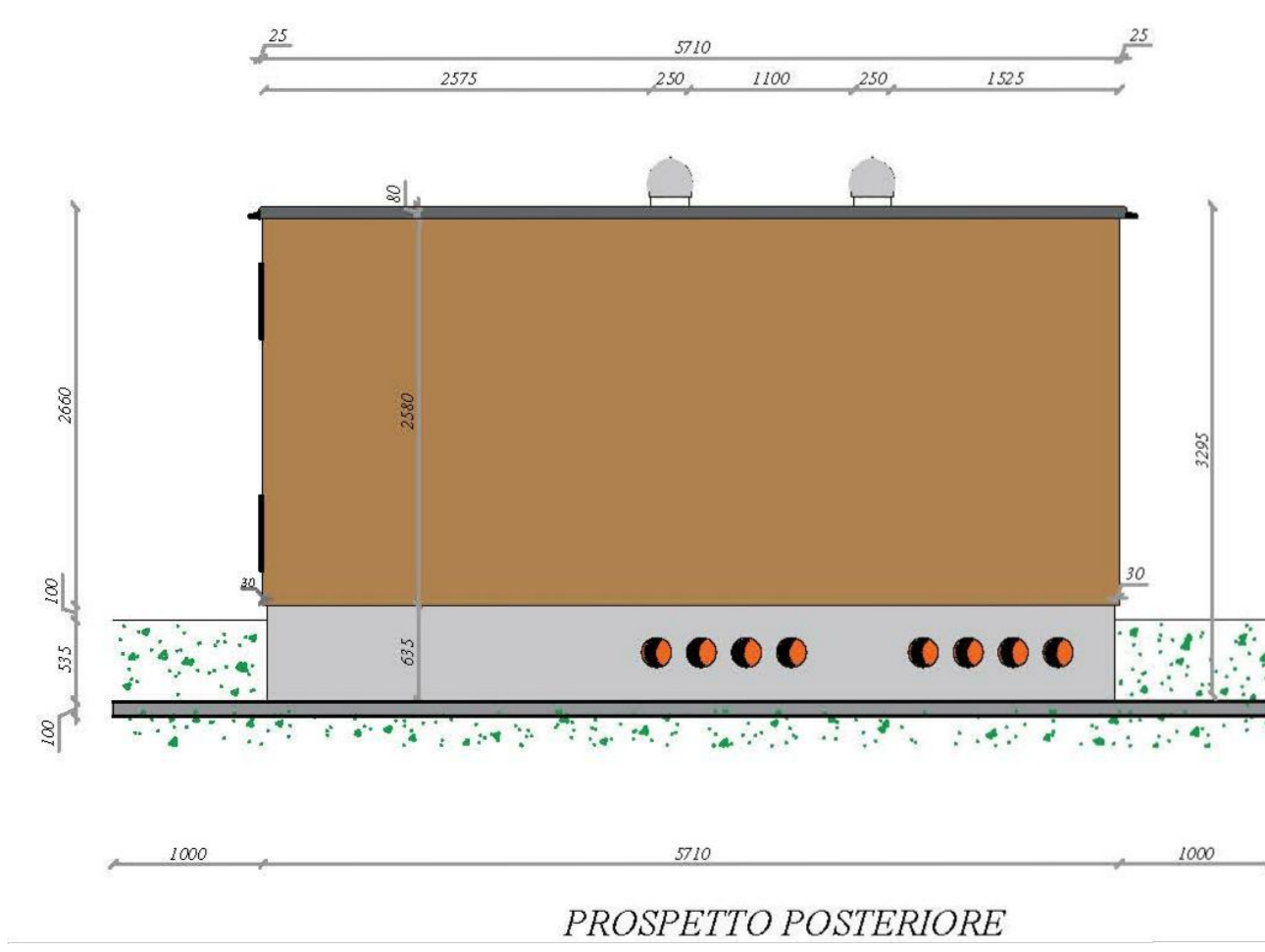


CABINA GENERALE MT - SOTTOCAMPO GUARASCA - CABINA UTENTE - DG2061 ed.VIII



Vito Brezzi



REV.	DATE	DESCRIPTION	PREPARED	CHECKED	APPROVED
01	13/04/2022	Rev.01	D.Sacchi	A.Fata	V.Bretti
00	15/07/2021	Emissione Definitiva	D.Sacchi	A.Fata	V.Bretti
CONTRACTOR'S LOGO		PROJECT:	Spinetta Marengo FV (13131)		
GOLDER wsp		FILE NAME:			
enel		CLASSIFICATION:	FORMAT:	SCALE:	PLOT SCALE:
Engineering & Construction		Company	A2	1:50	1:1
GRE VALIDATION		UTILIZATION SCOPE:	TITLE:		
VERIFIED BY: PE EGP		Basic Design	CABINE ELETTRICHE CABINA GENERALE MT GUARASCA		
COLLABORATORS		GRE CODE			
		GROUP	FUNCTION	TYPE	ISSUER
		GRE	EEC	D27	ITP
		COUNTRY	TEC.	PLANT	SYSTEM
		13	13	1000	4801
		PROGRESSIVE	REVISION		
		00	04		

This document is property of Enel Green Power SpA. It is strictly forbidden to reproduce this document, in whole or in part, and to provide to others any related information without the previous written consent by Enel Green Power SpA.