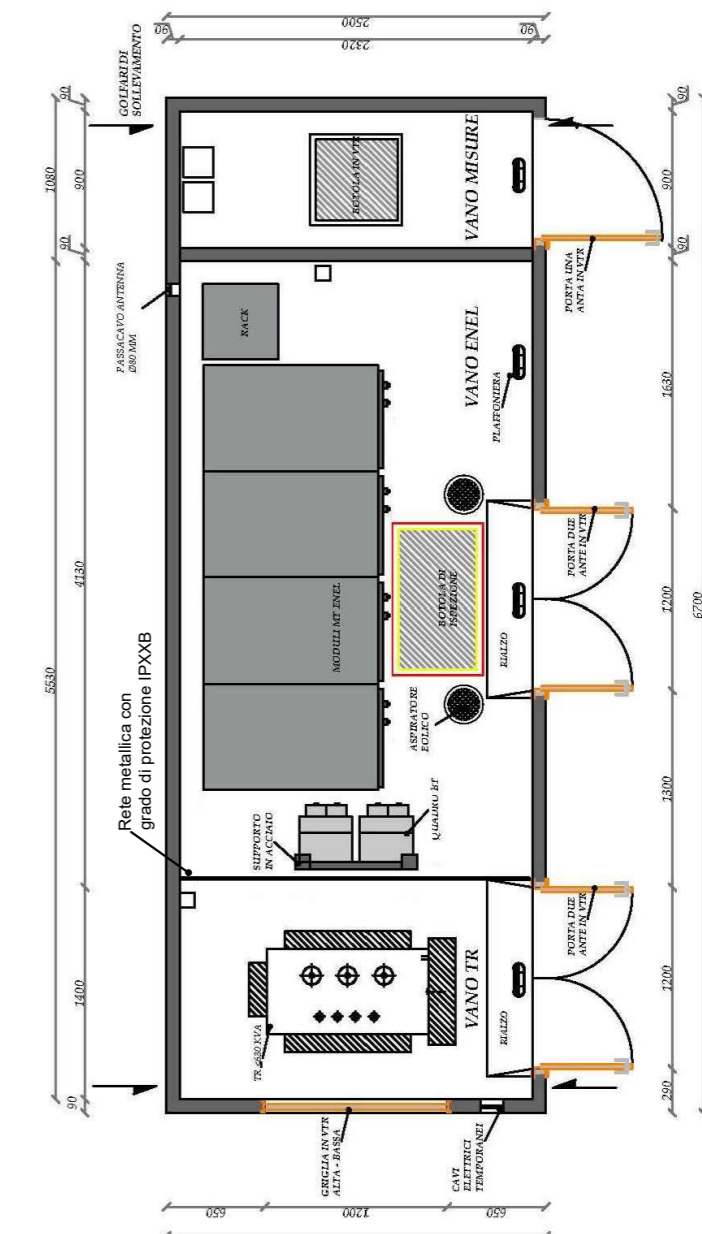
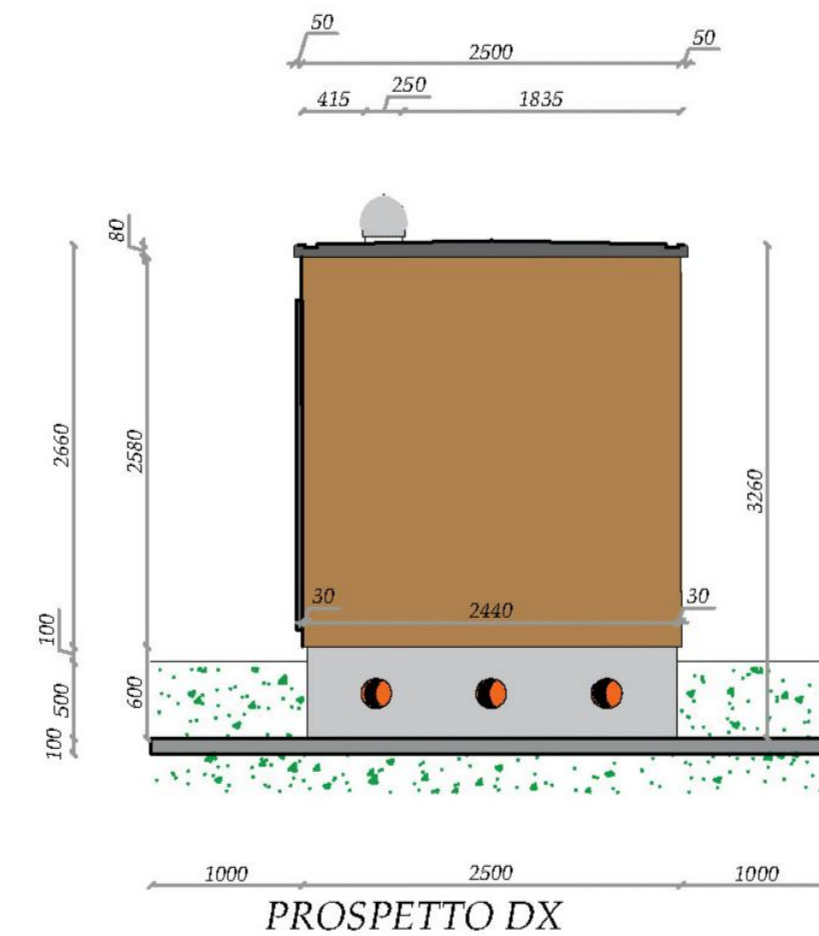
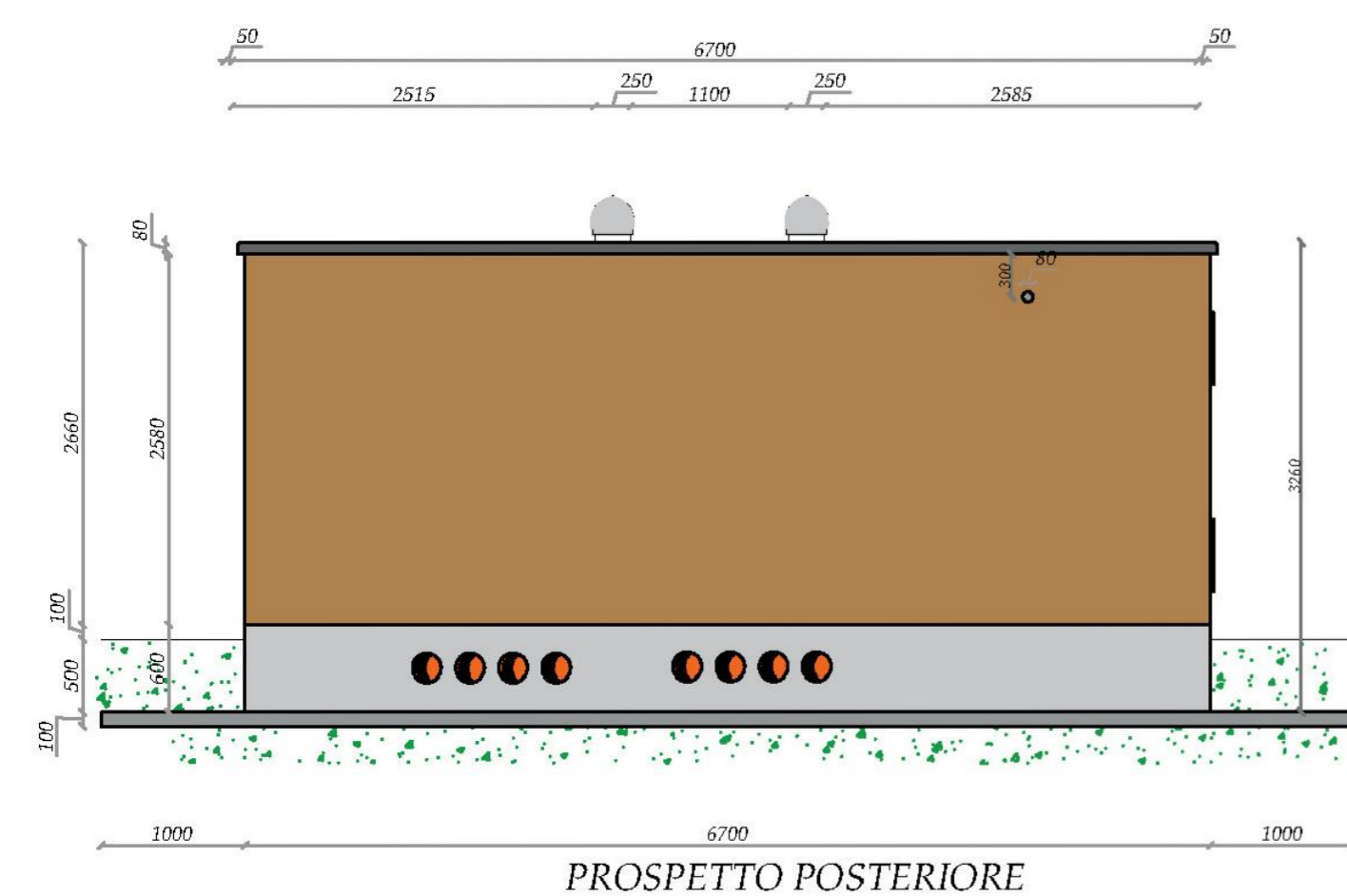
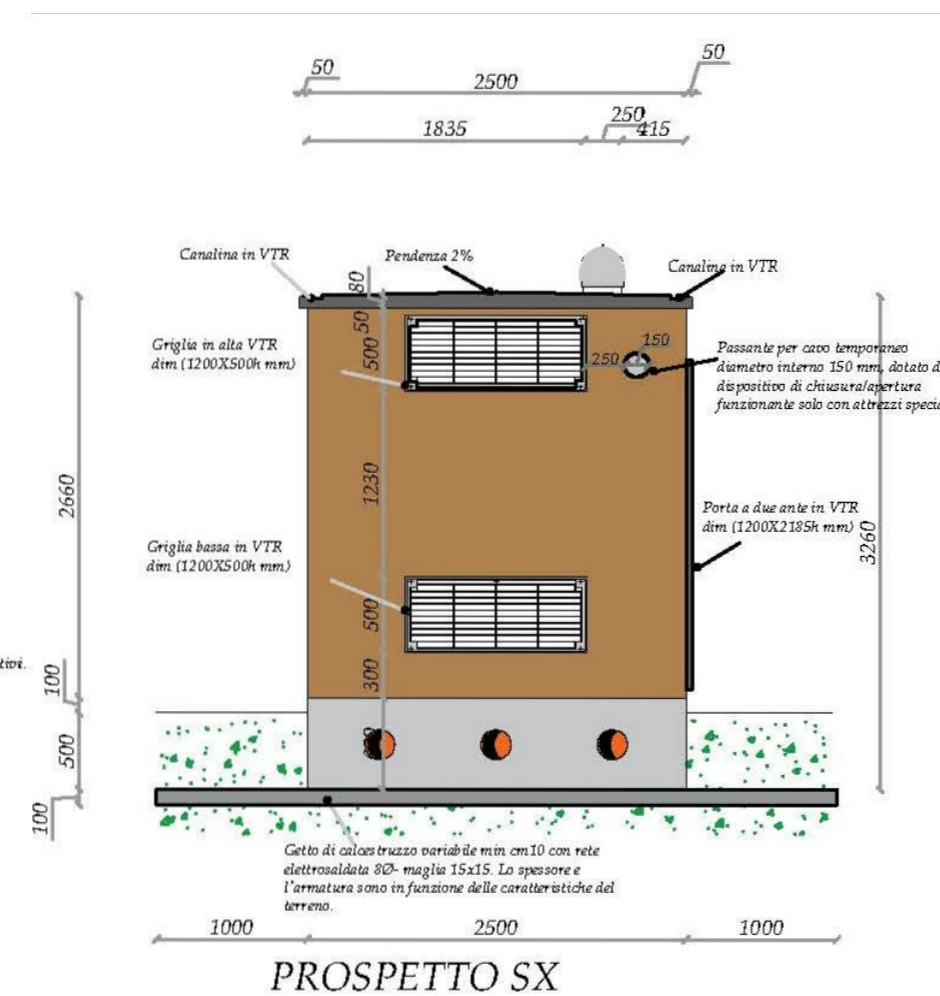
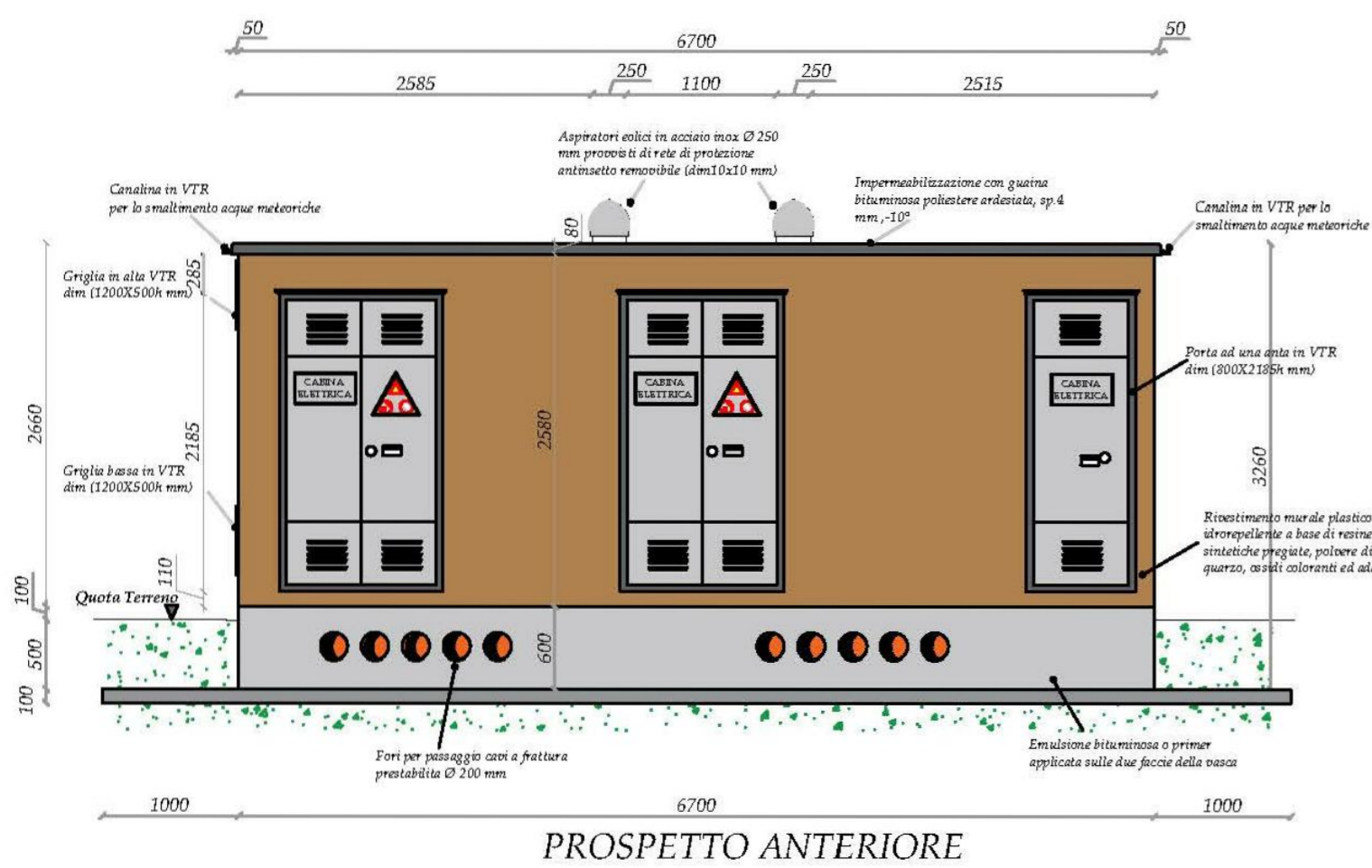


CABINA GENERALE MT - SOTTOCAMPO LA BOLLA - CABINA UTENTE - DG2092 rev.3



Uto
 Dott. Ing. VITO BRETTI
 ORDINE INGEGNERI
 ROMA
 N. 23403
 Categoria s-b-c

REV.	DATE	DESCRIPTION	PREPARED	CHECKED	APPROVED
01	13/04/2022	Rev.01	D.Sacchi	A.Fata	M.Gallina V.Bretti
00	15/07/2021	Emissione Definitiva	D.Sacchi	A.Fata	V.Bretti

		PROJECT: Spinetta Marengo FV (13131)								
		CLASSIFICATION: Company		FORMAT: A2	SCALE: 1:50	PLOT SCALE: 1:1	SHEET: 5 di / of 6			
Engineering & Construction GRE VALIDATION		UTILIZATION SCOPE: Basic Design		TITLE: CABINE ELETTRICHE CABINA GENERALE MT LA BOLLA						
VALIDATED BY: PE EGP	GRE CODE									
VERIFIED BY: Discipline EGP	GROUP: GRE	FUNCTION: EEC	TYPE: D27	ISSUER: ITP	COUNTRY: 13	TEC.: 13	PLANT: 1000	SYSTEM: 04	PROGRESSIVE: 801	REVISION: