
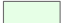
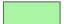




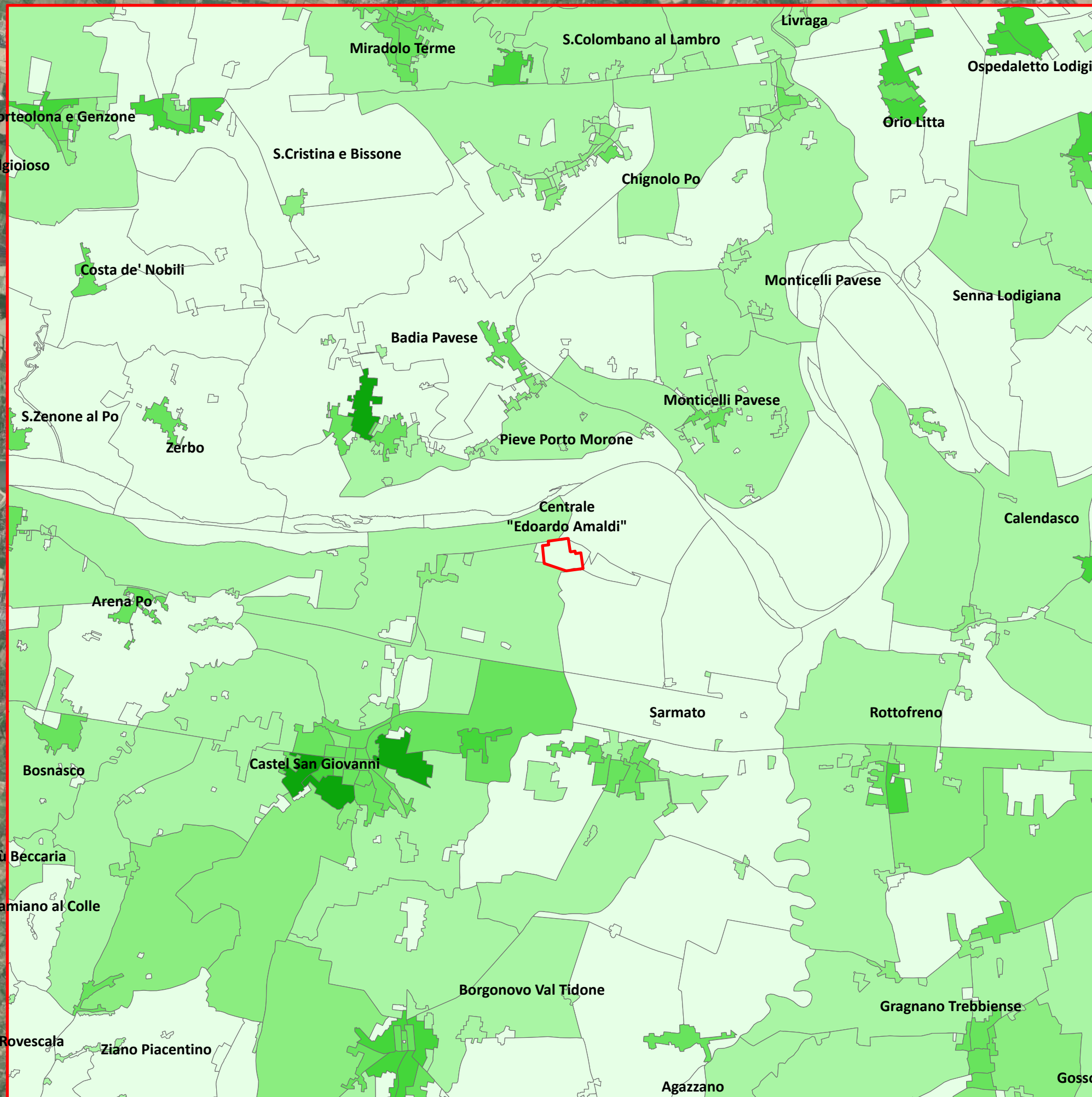


**Legenda**

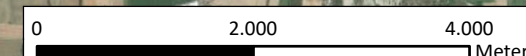
 Centrale Edoardo Amaldi

**Numero residenti maschi**

-  0 - 10
-  10 - 50
-  50 - 100
-  100 - 300
-  300 - 500
-  500 - 786



Lato 18,5 Km



Centrale "Edoardo Amaldi" di La Casella

**Valutazione di Impatto Sanitario**

Tavola 2b  
Mappa della popolazione totale maschile