



COMUNE di MONTALTO di CASTRO

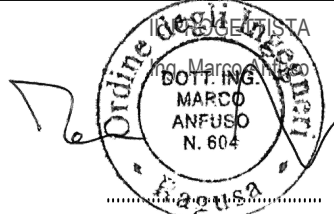

Proponente
Alcione Rinnovabili srl
 Largo Augusto n°3 - 20122 Milano (MI)



Società controllata al 100% da BayWa r.e. Italia srl
 Largo Augusto n°3 - 20122 Milano (MI)

Struttura di Progettazione e sviluppo
Coordinamento
 localit  Campomorto snc
 01014 Montalto di Castro
 Viterbo VT info@psem40.com



Struttura di Progettazione e sviluppo
Progettazione



R.C. Ing. Alessandro Cappello
 Collaboratori
 Dott. Ing. Salvatore Falla
 Dott. Arch. Mirko Pasqualino Re
 Dott. Ing. Valentino Otupacca

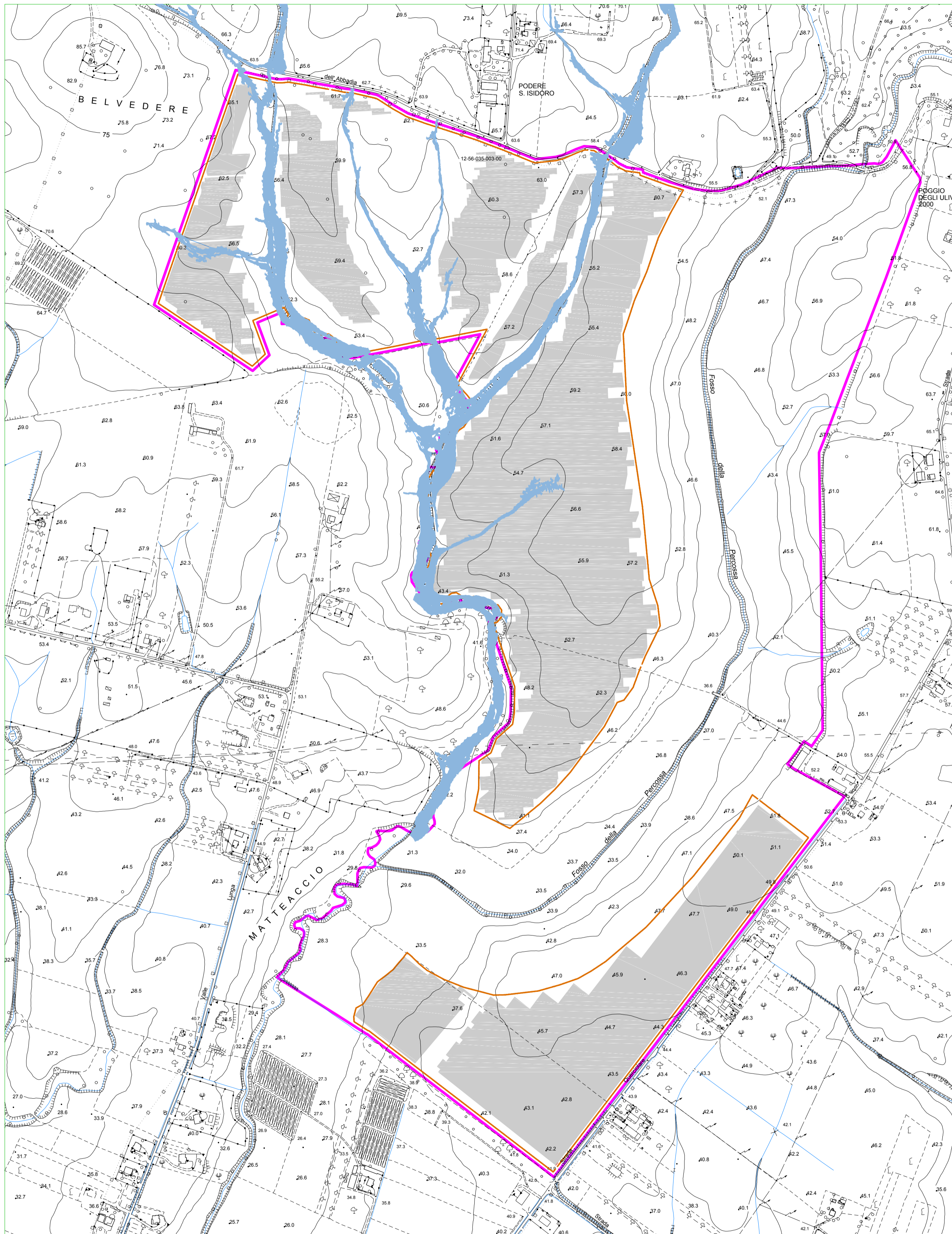


Opera
Progetto QUERCIOLARE
 progetto di impianto fv a terra di potenza pari a 77,69 MW in DC e 65 MW in AC e delle opere connesse da installarsi nel territorio del comune di Montalto di Castro -VT-

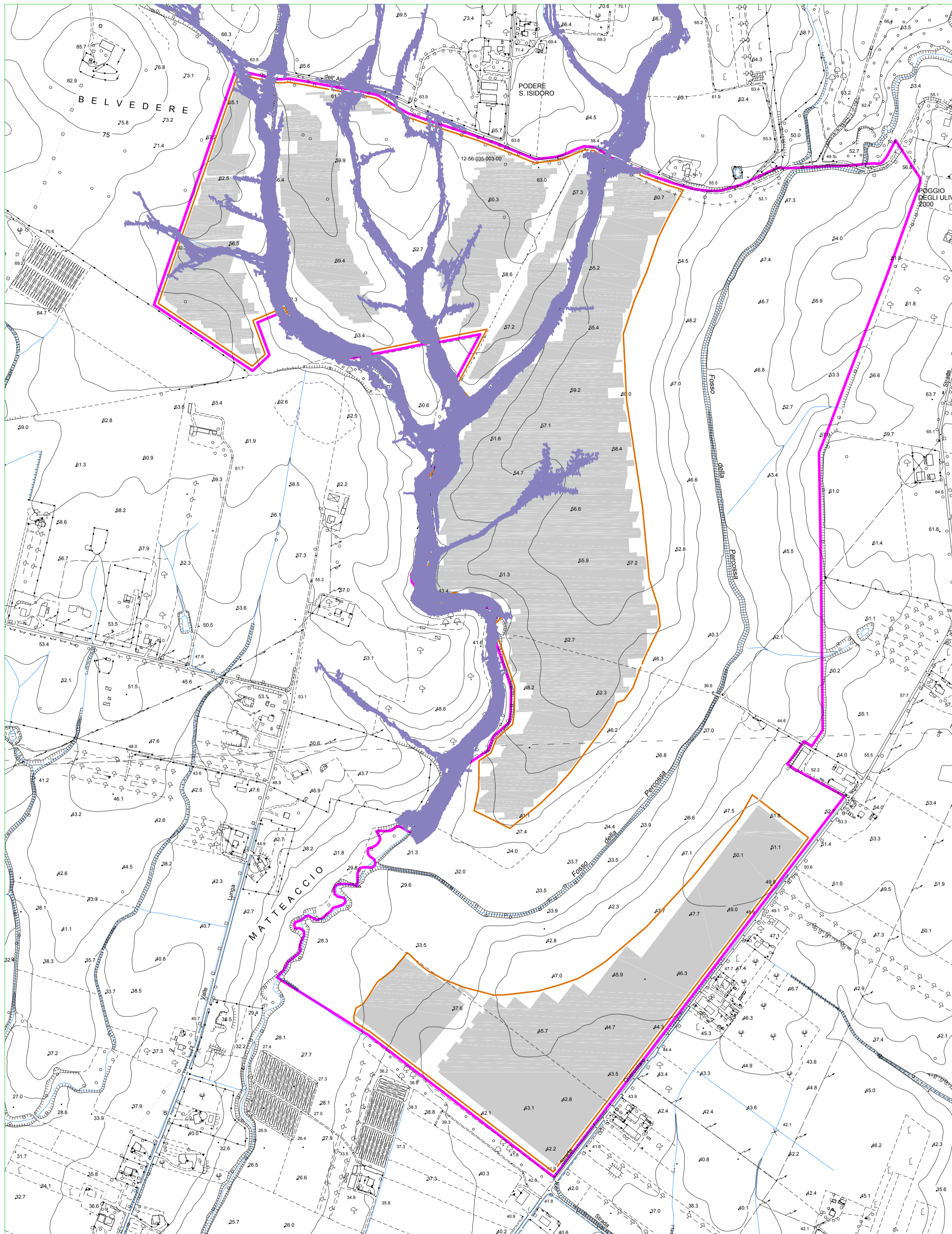
Oggetto	Folder: VIA_2	Sez. D
	Nome Elaborato: VIA2_TAV32_Allegati Relazione Idrologica e Idraulica	Codice Elaborato: TAV_32
	Descrizione Elaborato: Planimetrie descrittive dello studio idrologico e idraulico	

00	Aprile 2022	Emissione per progetto definitivo	Regran/Psem40	Sunwin	Alcione Rinnovabili
Rev.	Data	Oggetto della revisione	Elaborazione	Verifica	Approvazione

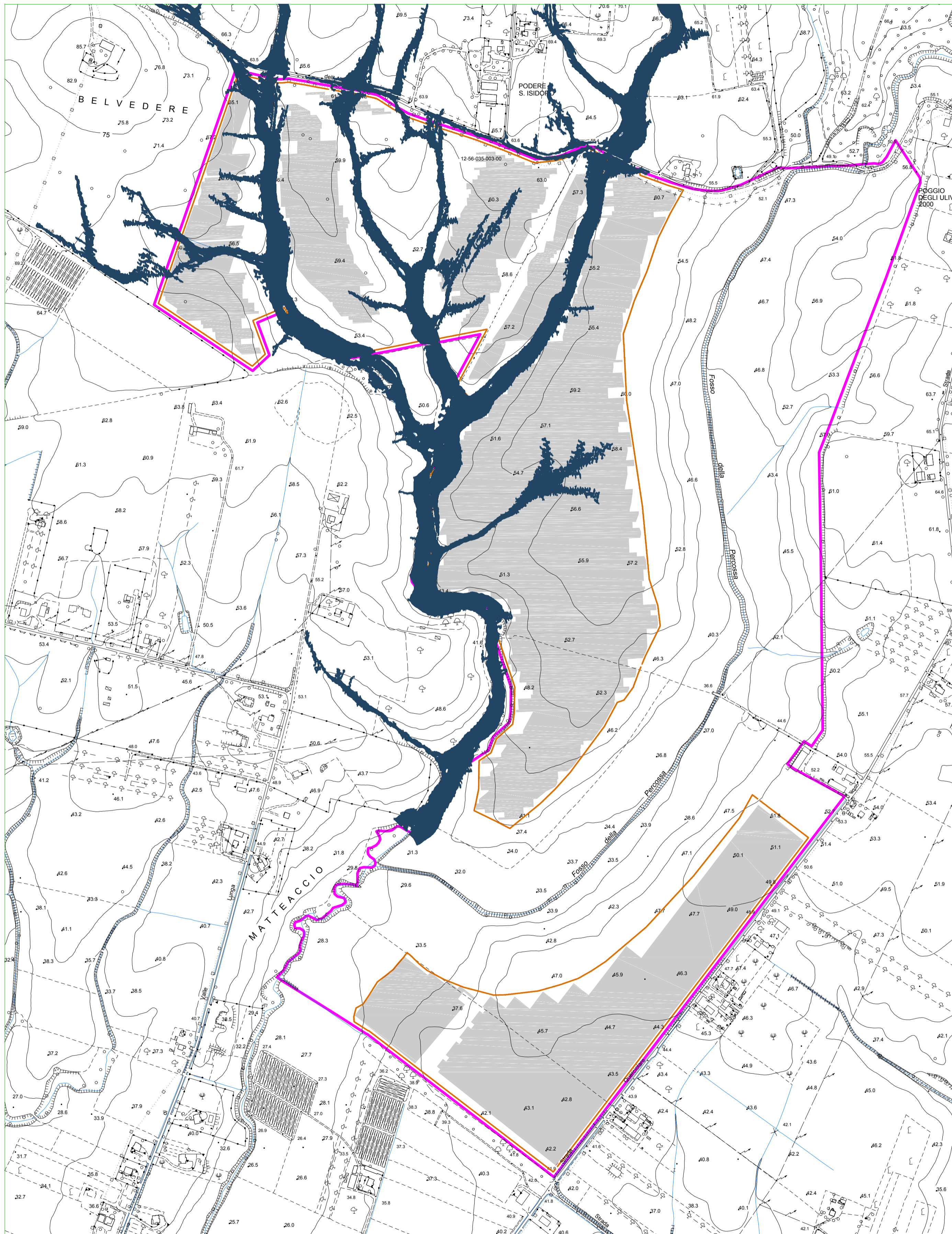
Scala: -
 Formato: A4



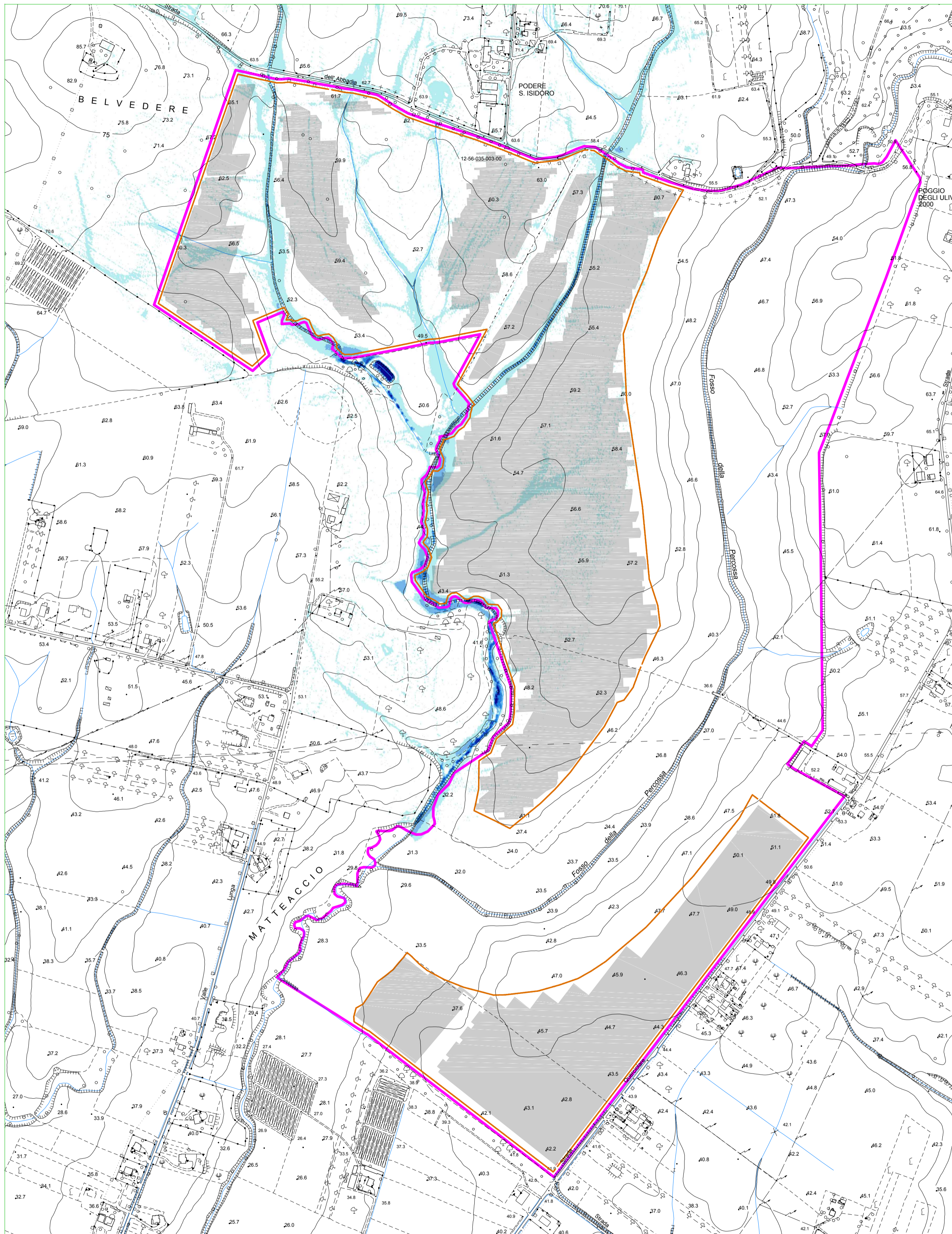
	Contorno catastale	CARTA DELLE ESONDAZIONI	
	Recinzione metallica perimetrale impianto FV		
	Area occupata dalle strutture fotovoltaiche		






	Contorno catastale	CARTA DELLE ESONDAZIONI	
	Recinzione metallica perimetrale impianto FV		
	Area occupata dalle strutture fotovoltaiche		

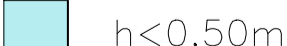
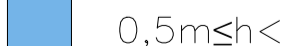


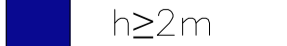


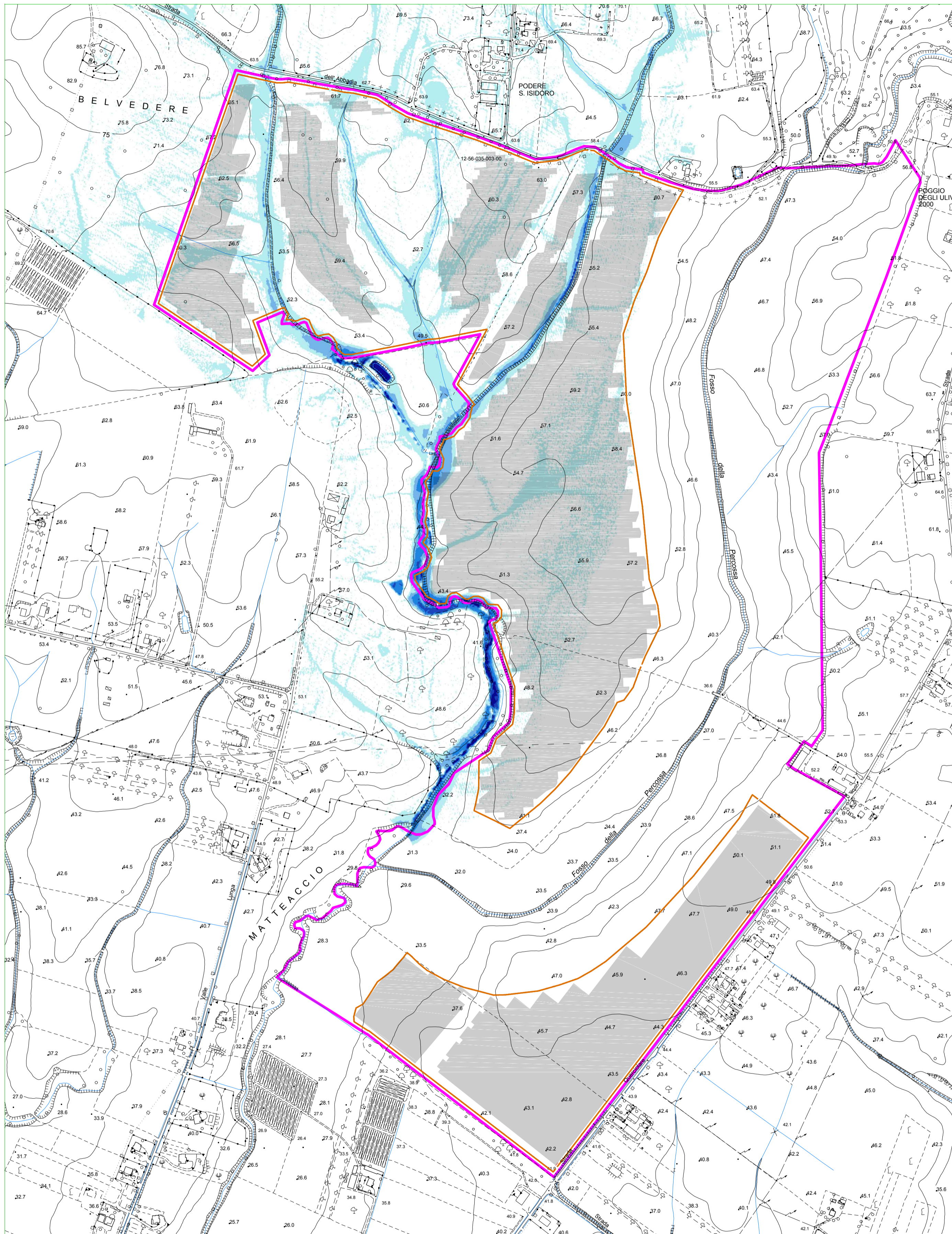
	Contorno catastale	CARTA DELLE ESONDAZIONI	
	Recinzione metallica perimetrale impianto FV		
	Area occupata dalle strutture fotovoltaiche		






	Contorno catastale
	Recinzione metallica perimetrale impianto FV
	Area occupata dalle strutture fotovoltaiche

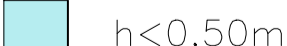
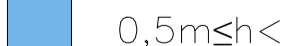


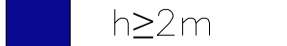
CARTA TIRANTI IDRICI PER FENOMENI DI ESONDAZIONE TR 30

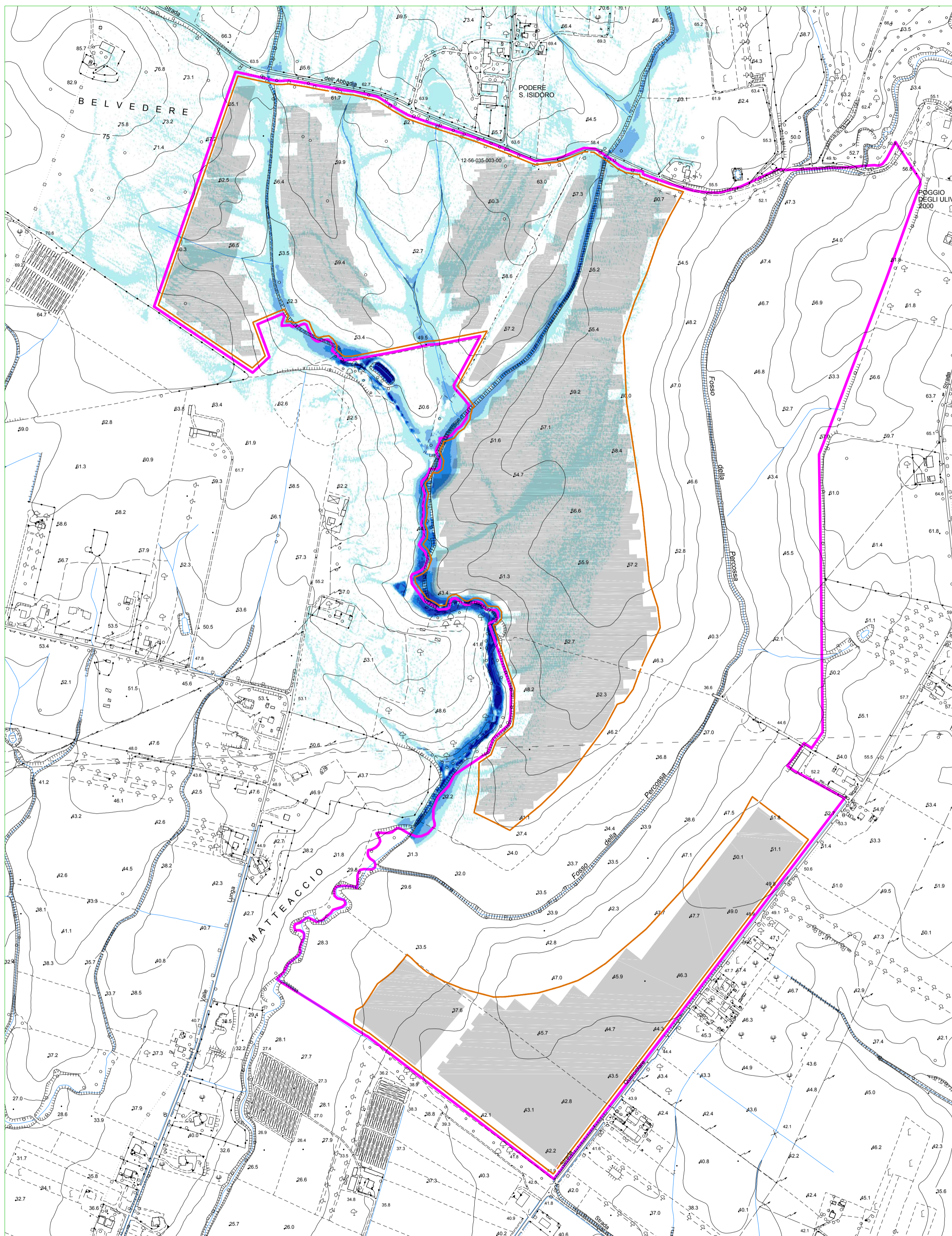
	$h < 0,50m$		$0,5m \leq h < 1m$		$1m \leq h < 1,5m$
	$1,5m \leq h < 2m$		$h \geq 2m$		






	Contorno catastale
	Recinzione metallica perimetrale impianto FV
	Area occupata dalle strutture fotovoltaiche

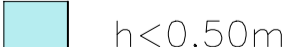
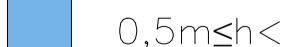


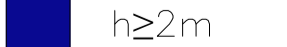
CARTA TIRANTI IDRICI PER FENOMENI DI ESONDAZIONE TR 200

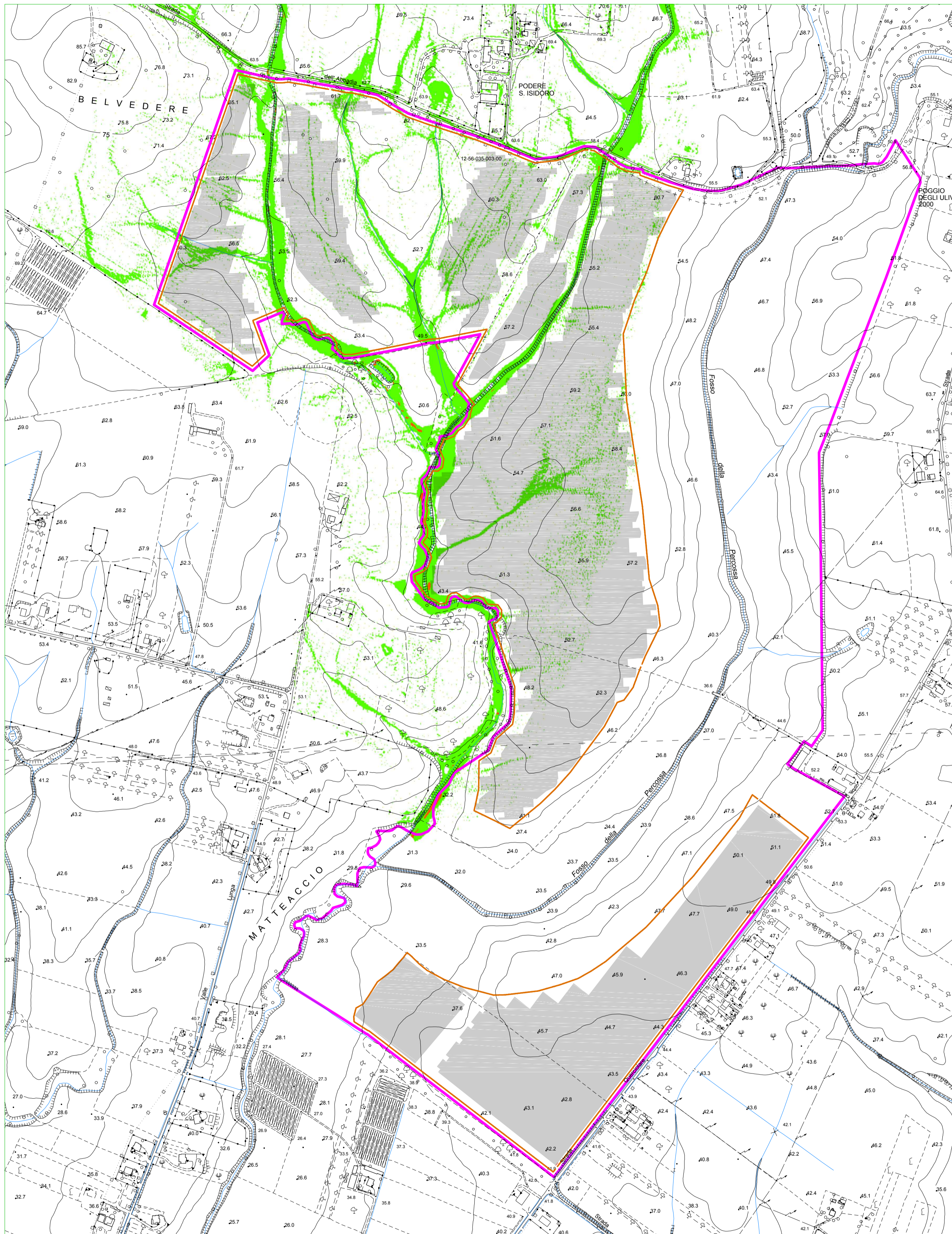
	$h < 0,50m$		$0,5m \leq h < 1m$		$1m \leq h < 1,5m$
	$1,5m \leq h < 2m$		$h \geq 2m$		








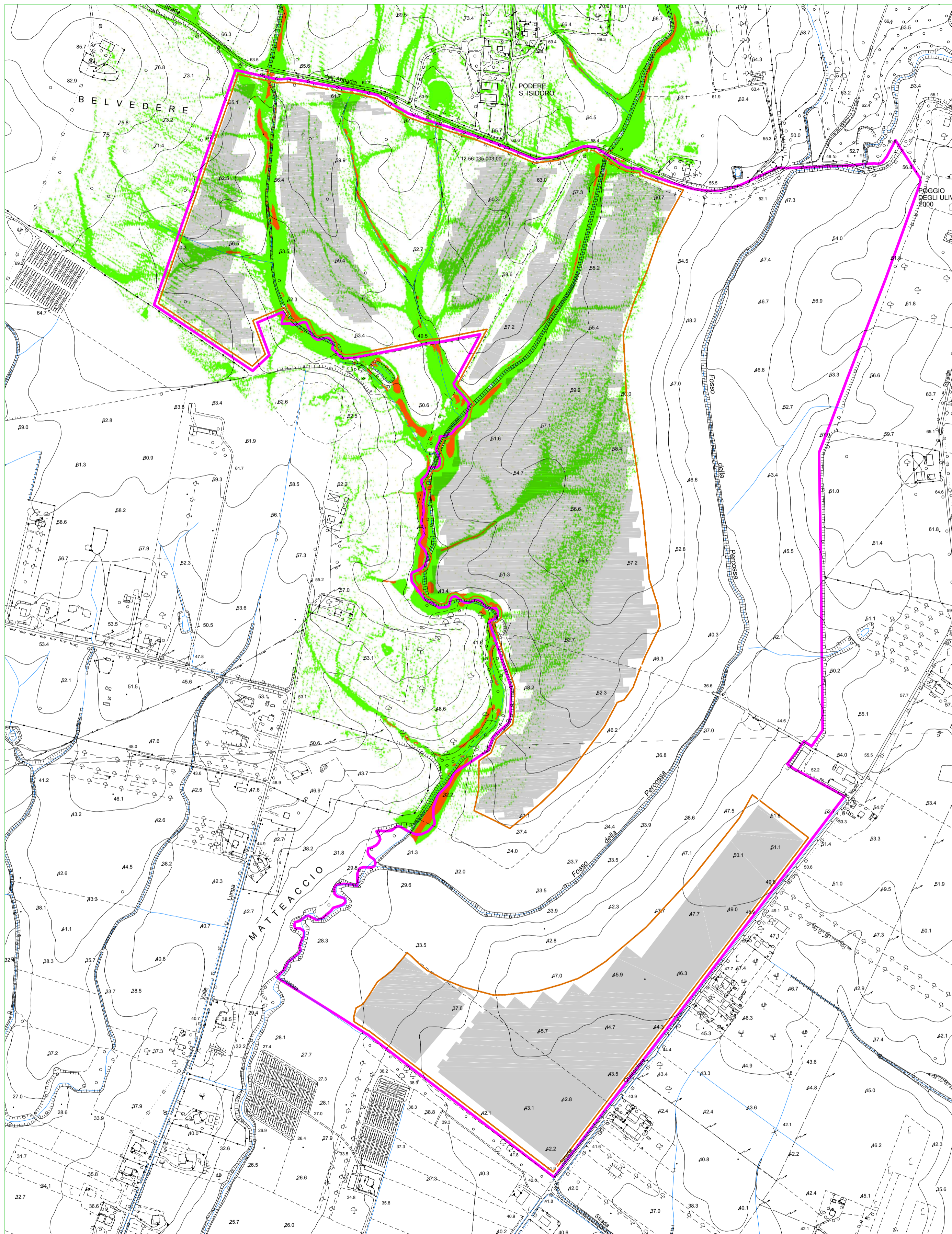
	Contorno catastale
	Recinzione metallica perimetrale impianto FV
	Area occupata dalle strutture fotovoltaiche





CARTA TIRANTI IDRICI PER FENOMENI DI ESONDAZIONE TR 500

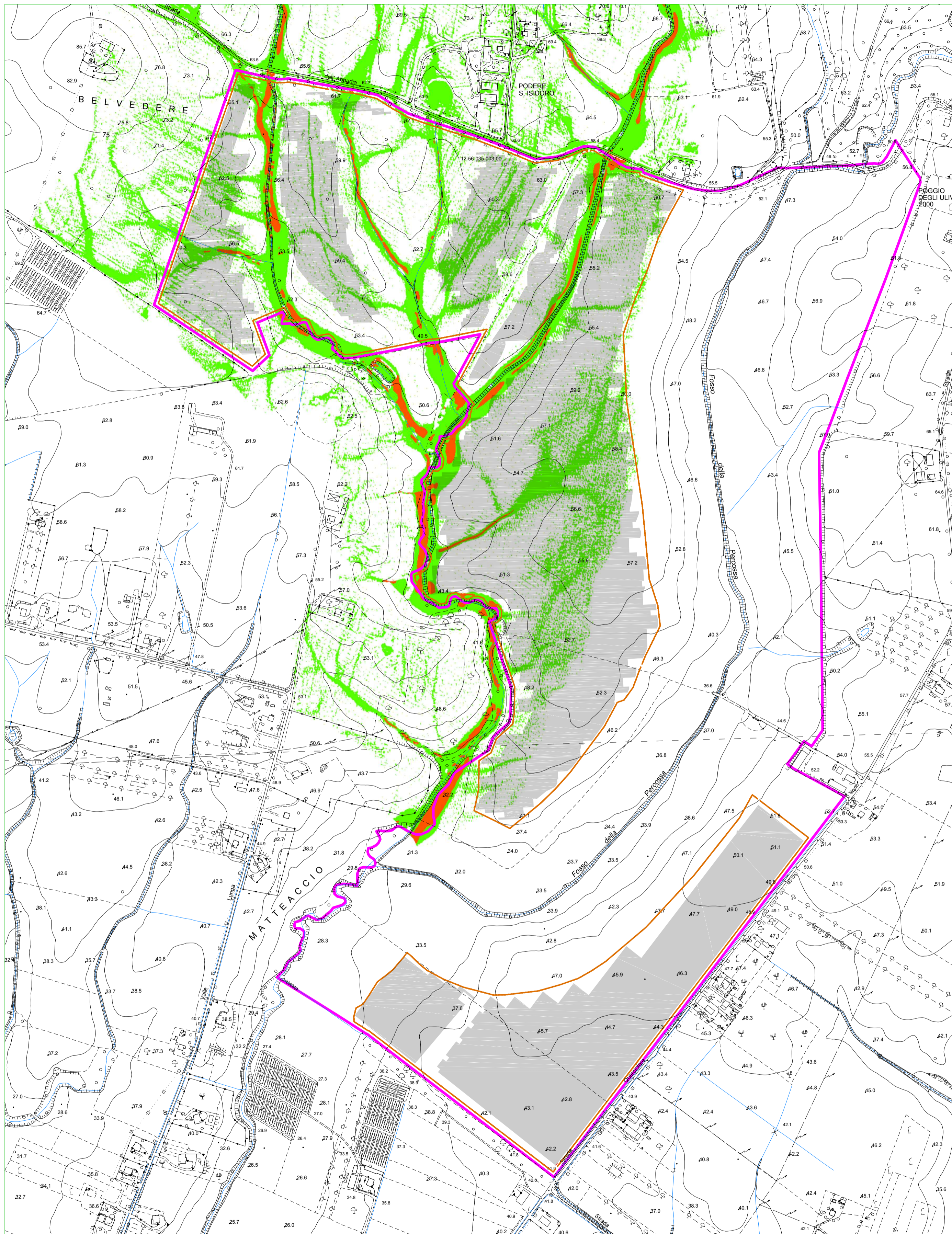
	$h < 0,50m$		$0,5m \leq h < 1m$		$1m \leq h < 1,5m$
	$1,5m \leq h < 2m$		$h \geq 2m$		





	Contorno catastale	CARTA DELLA VELOCITA' IDRICA PER FENOMENI DI ESONDAZIONE TR 30	
	Recinzione metallica perimetrale impianto FV		$v < 2 \text{ m/s}$
	Area occupata dalle strutture fotovoltaiche		$v \geq 2 \text{ m/s}$



	Contorno catastale	CARTA DELLA VELOCITA' IDRICA PER FENOMENI DI ESONDAZIONE TR 200	
	Recinzione metallica perimetrale impianto FV		$v < 2 \text{ m/s}$
	Area occupata dalle strutture fotovoltaiche		$v \geq 2 \text{ m/s}$



	Contorno catastale	CARTA DELLA VELOCITA' IDRICA PER FENOMENI DI ESONDAZIONE TR 500	
	Recinzione metallica perimetrale impianto FV		$v < 2 \text{ m/s}$
	Area occupata dalle strutture fotovoltaiche		$v \geq 2 \text{ m/s}$