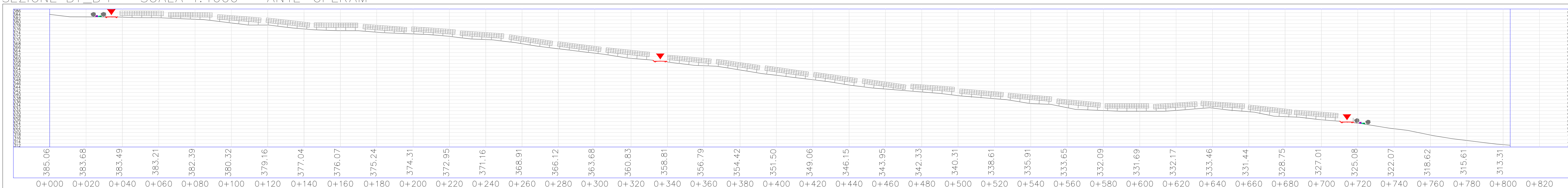
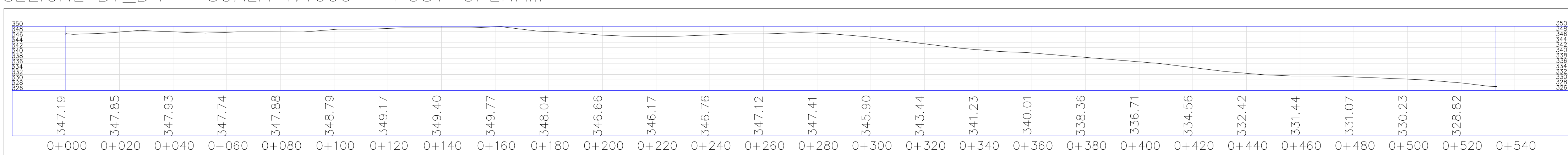


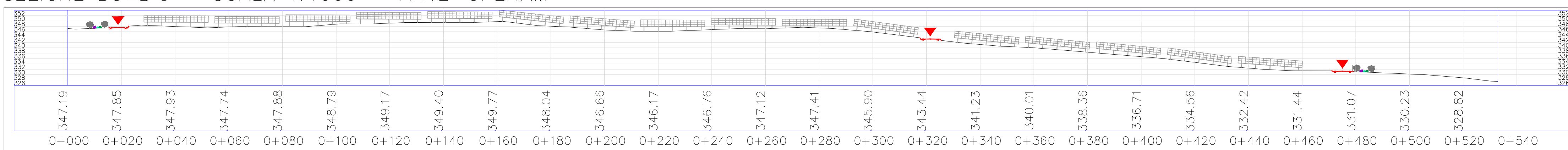
SEZIONE B1_B'1 - SCALA 1:1000 - ANTE-OPERAM



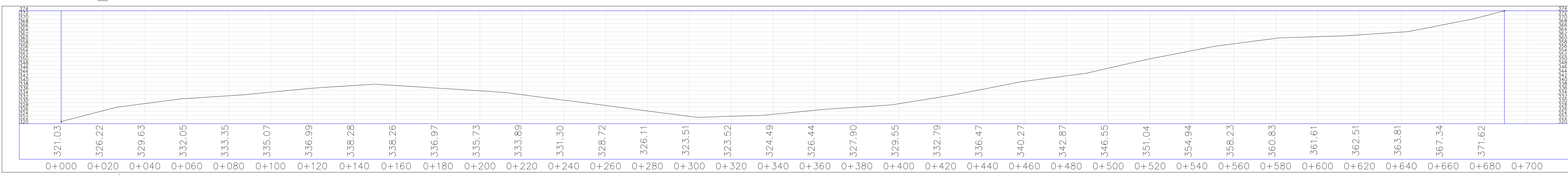
SEZIONE B1_B'1 - SCALA 1:1000 - POST-OPERAM



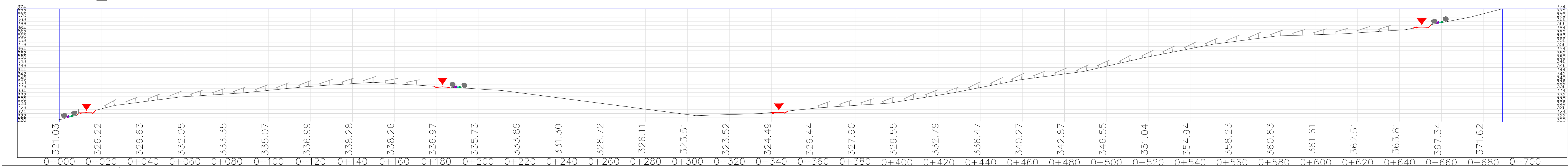
SEZIONE B3_B'3 - SCALA 1:1000 - ANTE-OPERAM



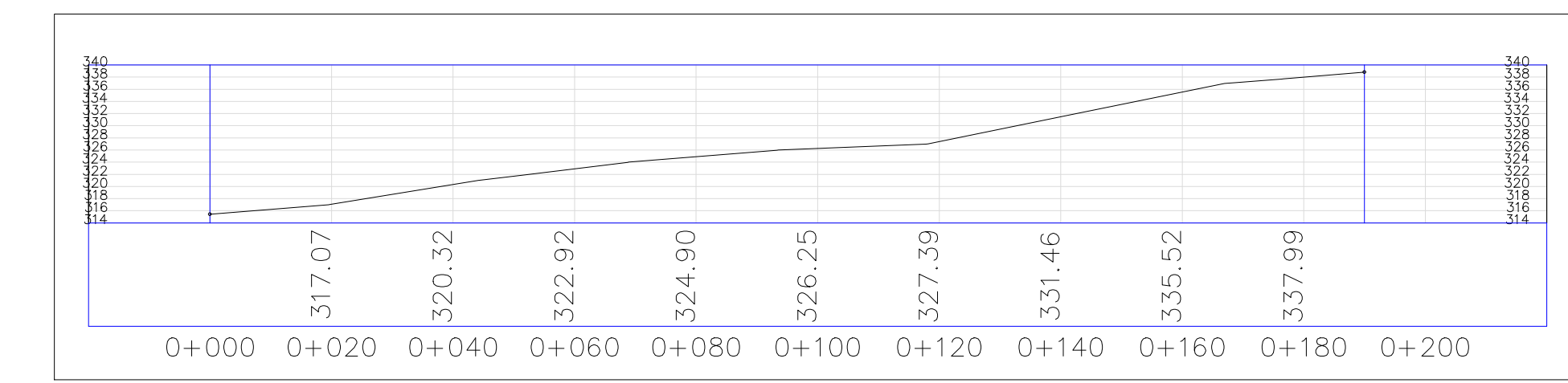
SEZIONE B3_B'3 - SCALA 1:1000 - POST-OPERAM



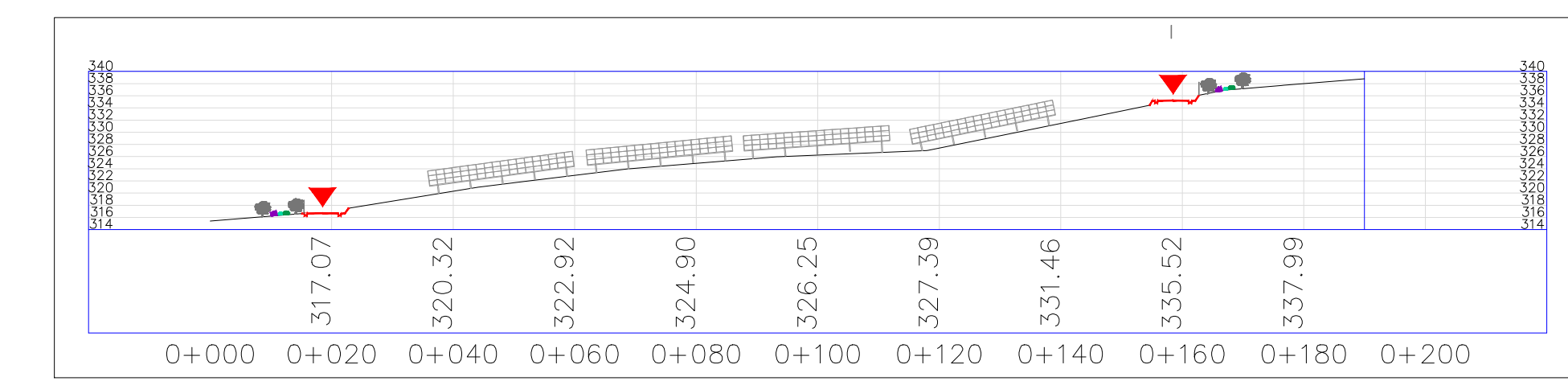
SEZIONE B4_B'4 - SCALA 1:1000 - ANTE-OPERAM



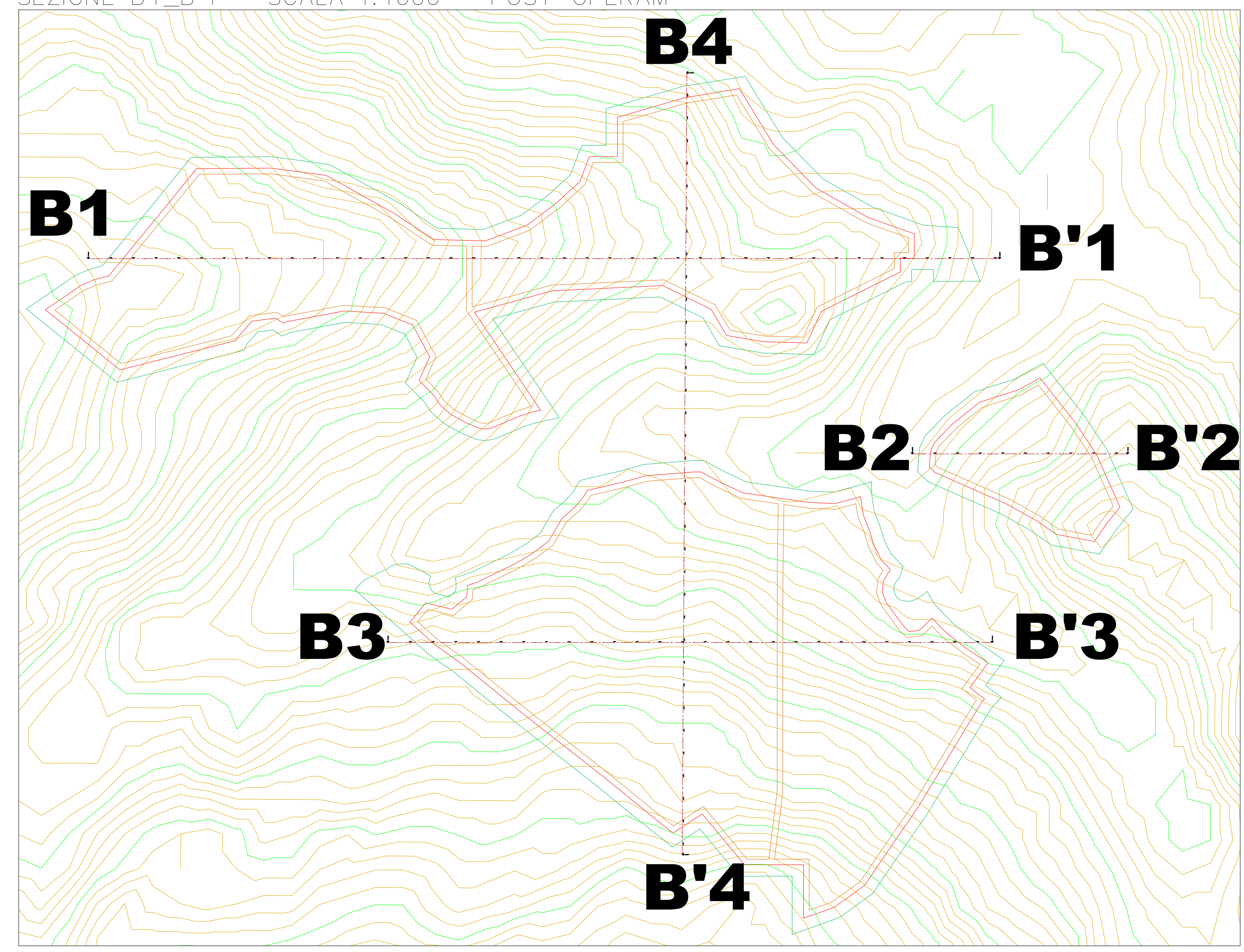
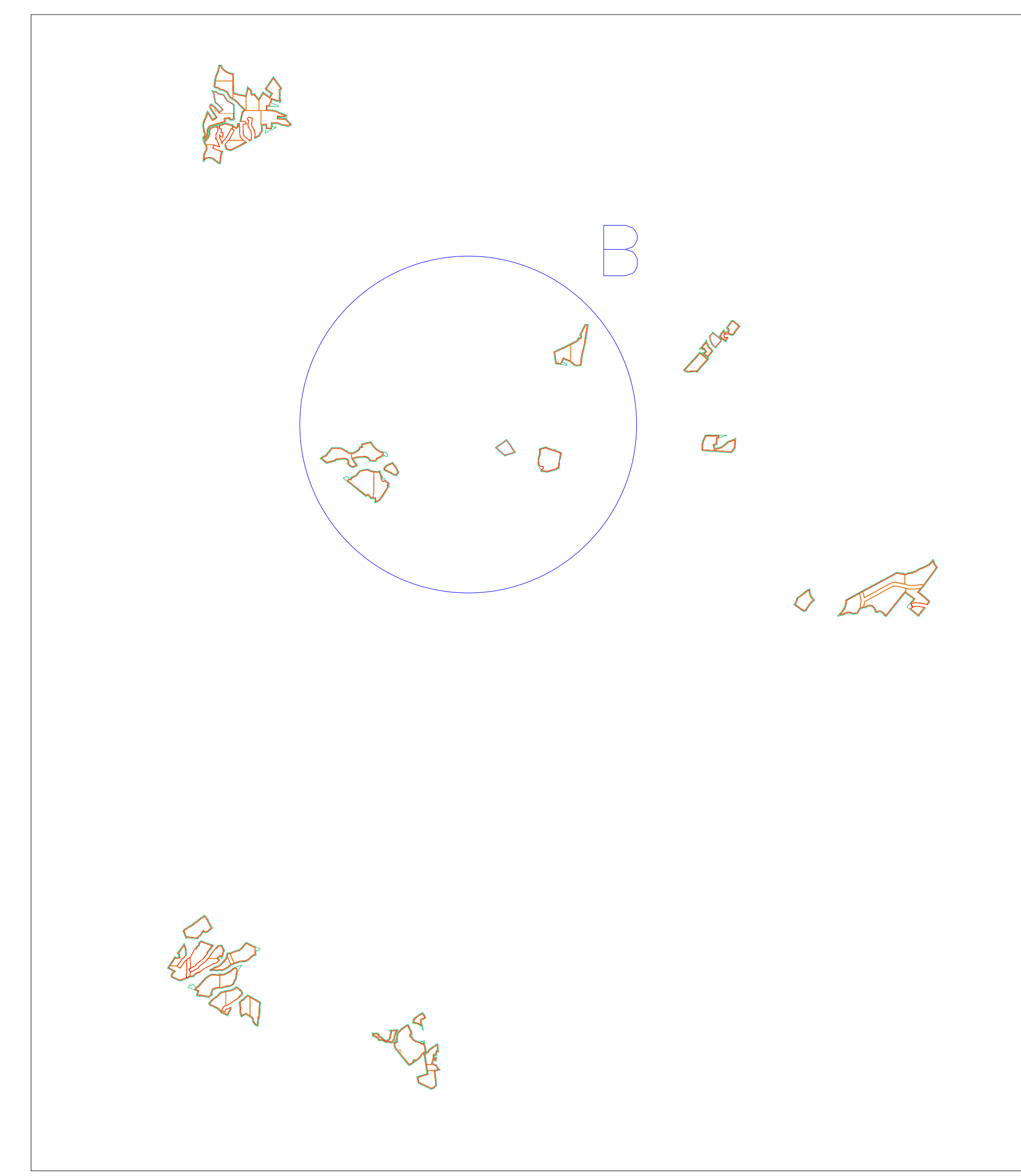
SEZIONE B4_B'4 - SCALA 1:1000 - POST-OPERAM



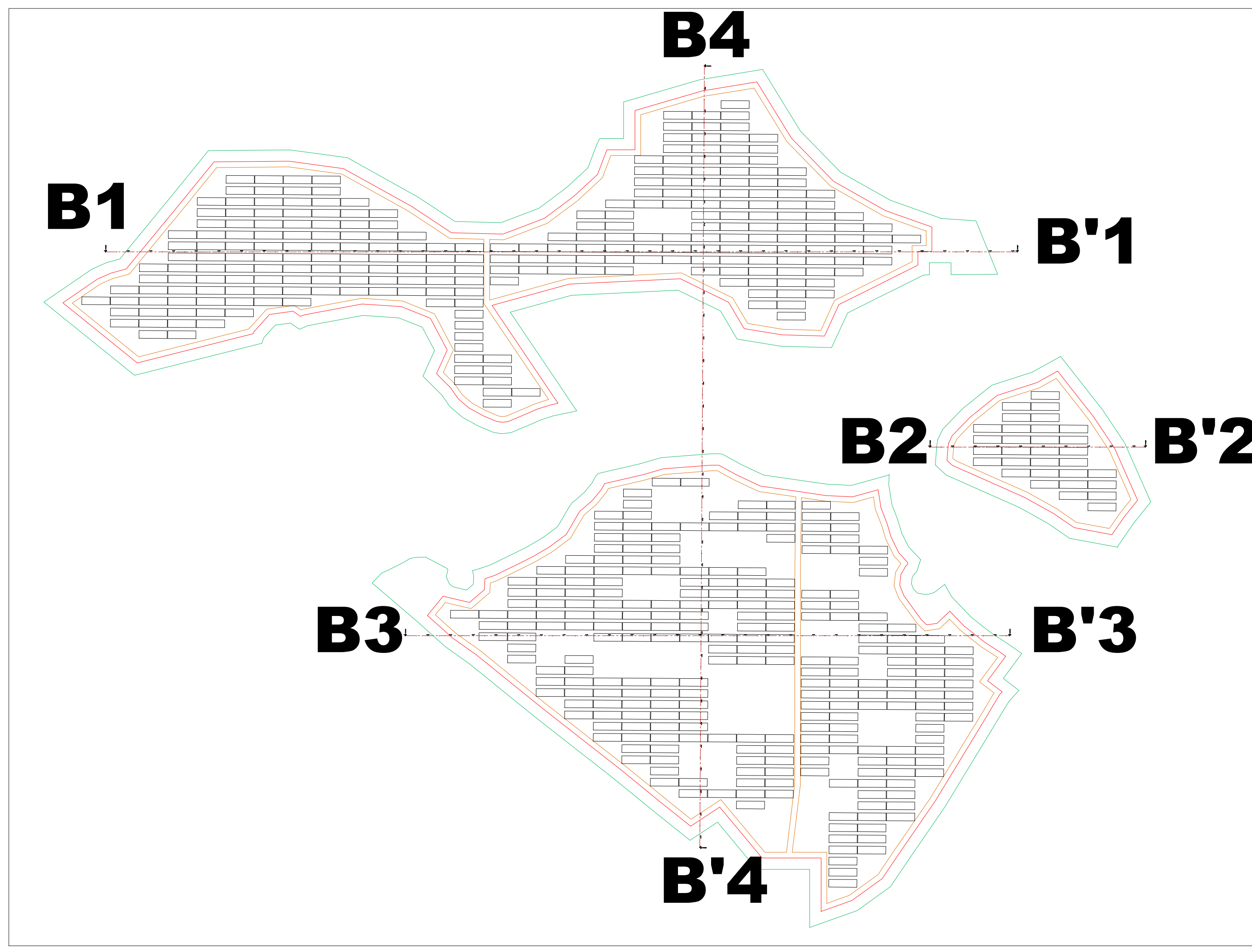
SEZIONE B'2_B2 - SCALA 1:1000 - ANTE-OPERAM



SEZIONE B'2_B2 - SCALA 1:1000 - POST-OPERAM



AREA IMPIANTO CON CURVE DI LIVELLO - CAMPO B



LAYOUT D'IMPIANTO - CAMPO B

Regione: Sicilia
 Provincia: Enna - Catania
 Comuni: Aidone - Assoro - Enna - Raddusa - Ramacca
 Località: Cda.Milocca-Piccirillitto-Arginemete-M.Tonde-Destrice-S.Bartolo

PROGETTO "ASSORO 2" IMPIANTO FOTOVOLTAICO DA 181,17 MWp E 140 MW IN IMMISSIONE PROGETTAZIONE DEFINITIVA

Titolo: RS06EPD0040A0
 PROFILI DEL TERRENO ANTE E POST OPERAM - CAMPO B - 1 di 2

Tavola: CV. 18.1
 Progettazione:

Visti / Firme / Timbri: Ing. Maurizio Moscoloni

Note:

Data	Rev.	Descrizione revisioni	Elaborato da:	Controlato da:	Approvato da:
03.12.2023	0	PRIMA IMMISSIONE	Ing. Maurizio Moscoloni	Arnaldo ert	IBVI 24 srl

REVISIONI

IBVI 24 s.r.l.
 IBVI 24 srl - Viale Amedeo Duca d'Aosta 76 39100 Bolzano (BZ) ibvi24en@pec.it

Scala: VARIE Formato: UNI A0