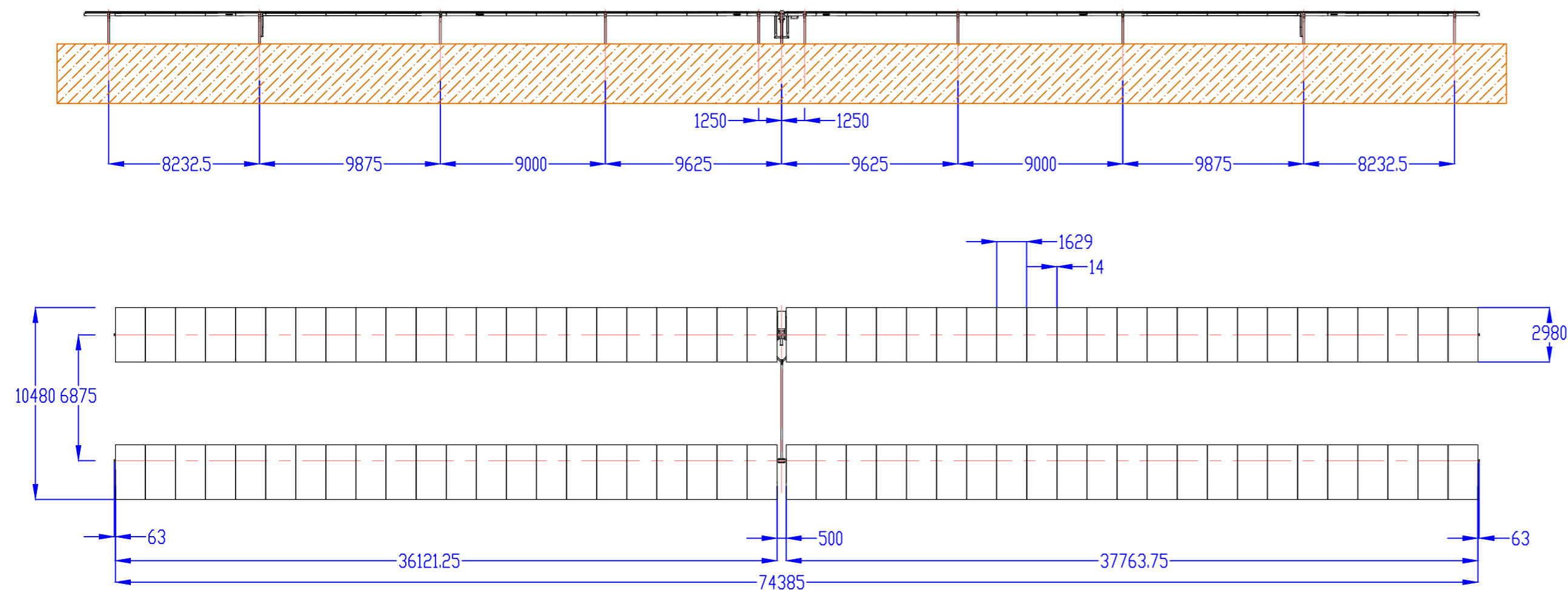
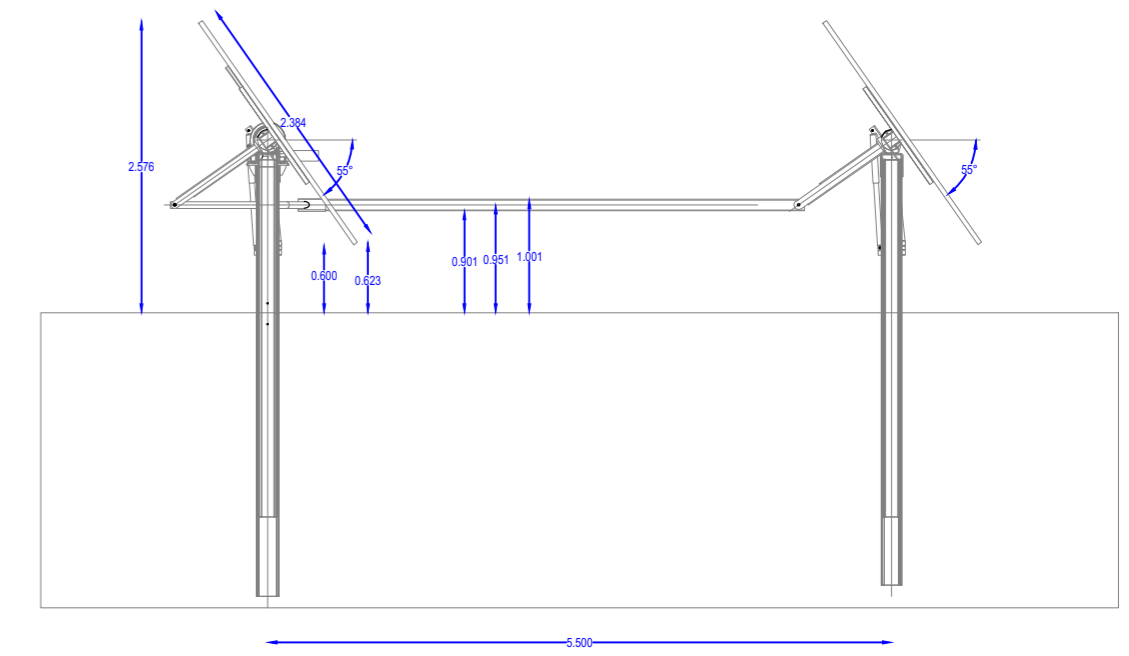


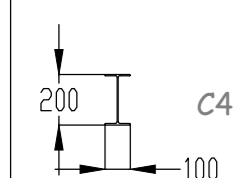
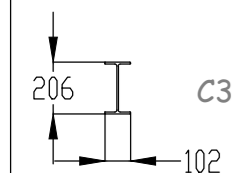
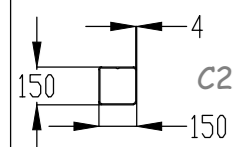
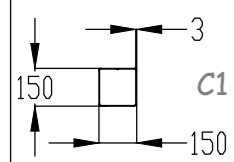
Struttura tipo 1 - n. 3 stringhe da 30 moduli



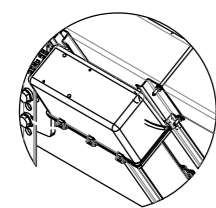
Particolare struttura



Sections

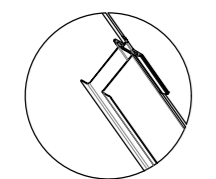


Electronic Box



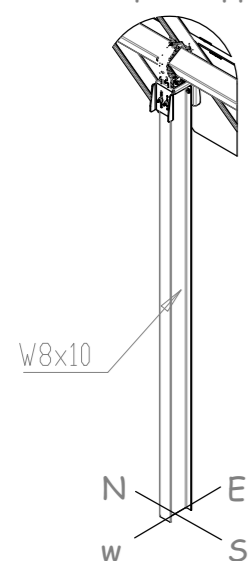
Detail D
Scale 1:20

Middle Clamp



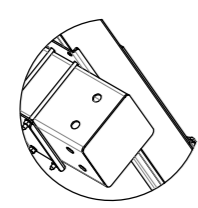
Detail F
Scale 1:15

Simple Support



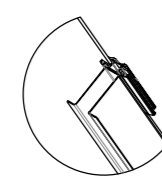
Detail B
Scale 1:50

Plastic Lid



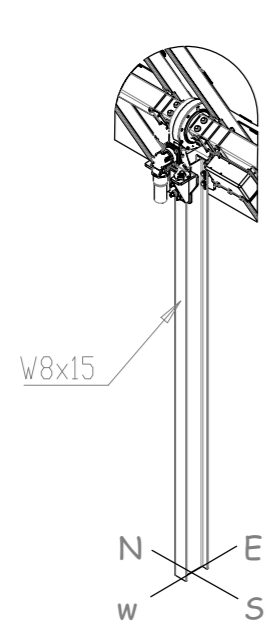
Detail C
Scale 1:15

End Clamp



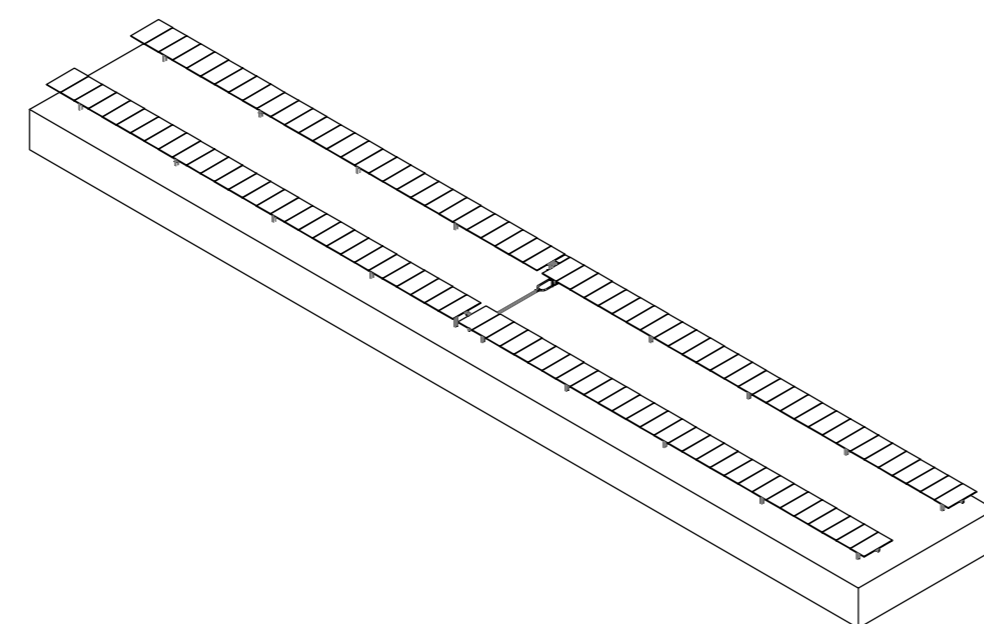
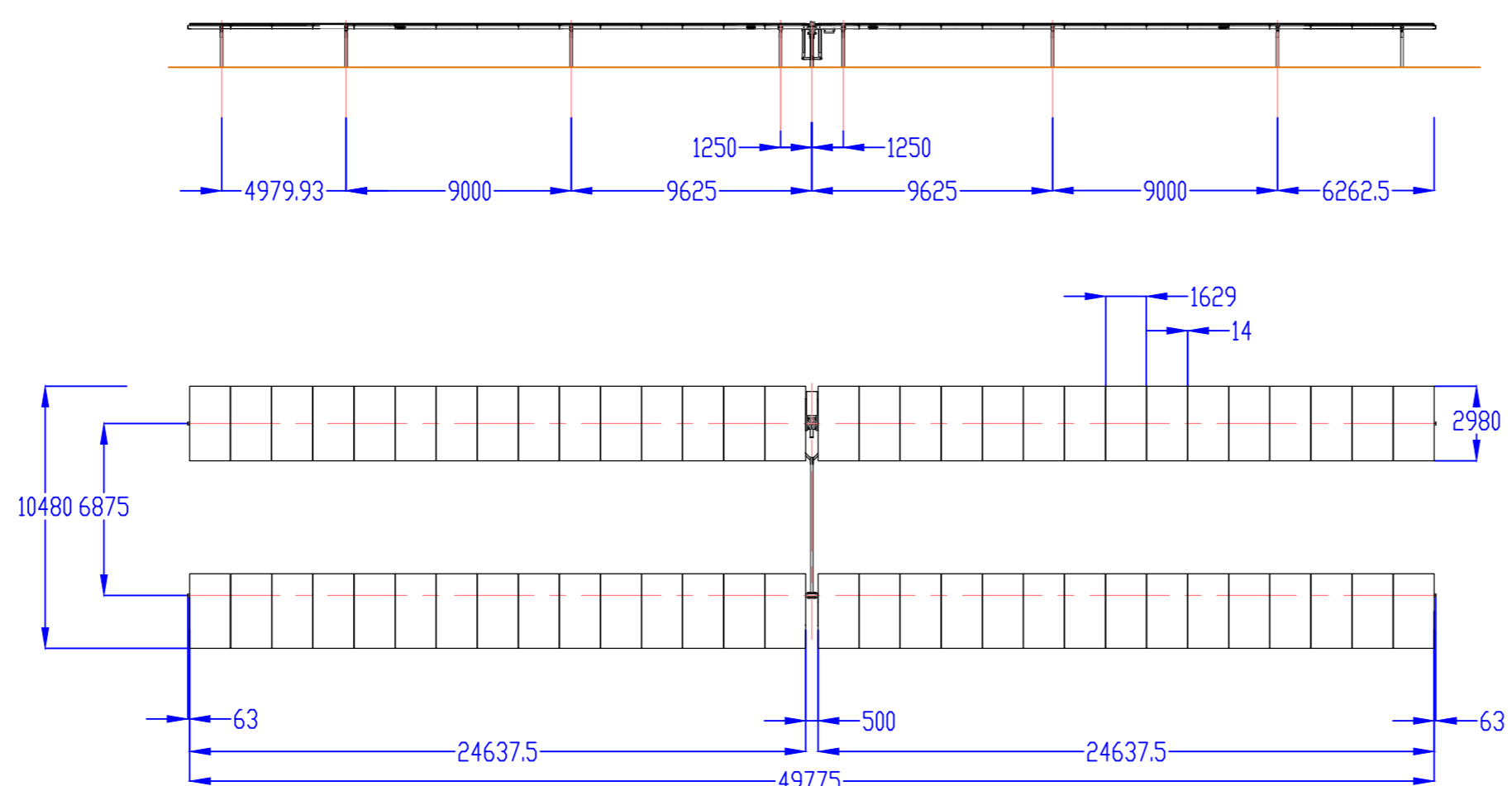
Detail E
Scale 1:15

Motor Support



Detail A
Scale 1:50

Struttura tipo 2 - n. 2 stringhe da 30 moduli



Particolare struttura - Vista 3D



COMUNE DI CIMINNA
PROVINCIA DI PALERMO
REGIONE SICILIA

IMPIANTO DI PRODUZIONE ENERGIA ELETTRICA DA FONTE
RINNOVABILE FOTOVOLTAICA DENOM. "CIMINNA AGROVOLTAICO"
POT. IMP. FV 33.887,80 kWp - POT. IMM. IMP. FV 32.800,00 kWac
POT. IMP. SIST. ACCUMULO 15.750,00 kW - POT. IMM. 15.000,00 kWac

Proponente

Solar Energy Venti Srl
Via Sebastian Altmann 9, - 39100 - Bolzano (BZ)

Progettazione impianto FV

Preparato
Rossella Ing. Sannasardo

Approvato
Antonio Ing. Nasti

Verificato
Francesco geom. Bruno



Progettazione SIA

Gestore rete elettrica

CP: 202000577

Visto approvazione

PROGETTO DEFINITIVO

Titolo elaborato

**PROGETTO IMPIANTO FOTOVOLTAICO
PARTICOLARI COSTRUTTIVI
STRUTTURE DI SOSTEGNO**

Elaborato N.	Data emissione 20/12/2021		
RS06EPD0031A0	Nome file CIMINNA AGRICOLO		
N. Progetto	Scala	00	20/12/2021
		REV.	DATA
			DESCRIZIONE
			PRIMA EMISSIONE

IL PRESENTE DOCUMENTO NON POTRA' ESSERE COPIATO, RIPRODOTTO O ALTAMENTE PUBBLICATO, IN TUTTO O IN PARTE, SENZA IL CONSENSO SCRITTO. OGNI UTILIZZO NON AUTORIZZATO SARÀ PERSEGUITO A NORMA DI LEGGE.
THIS DOCUMENT CAN NOT BE COPIED, REPRODUCED OR PUBLISHED, EITHER IN PART OR IN ITS ENTIRETY, WITHOUT THE WRITTEN PERMISSION. UNAUTHORIZED USE WILL BE PROSECUTED BY LAW.