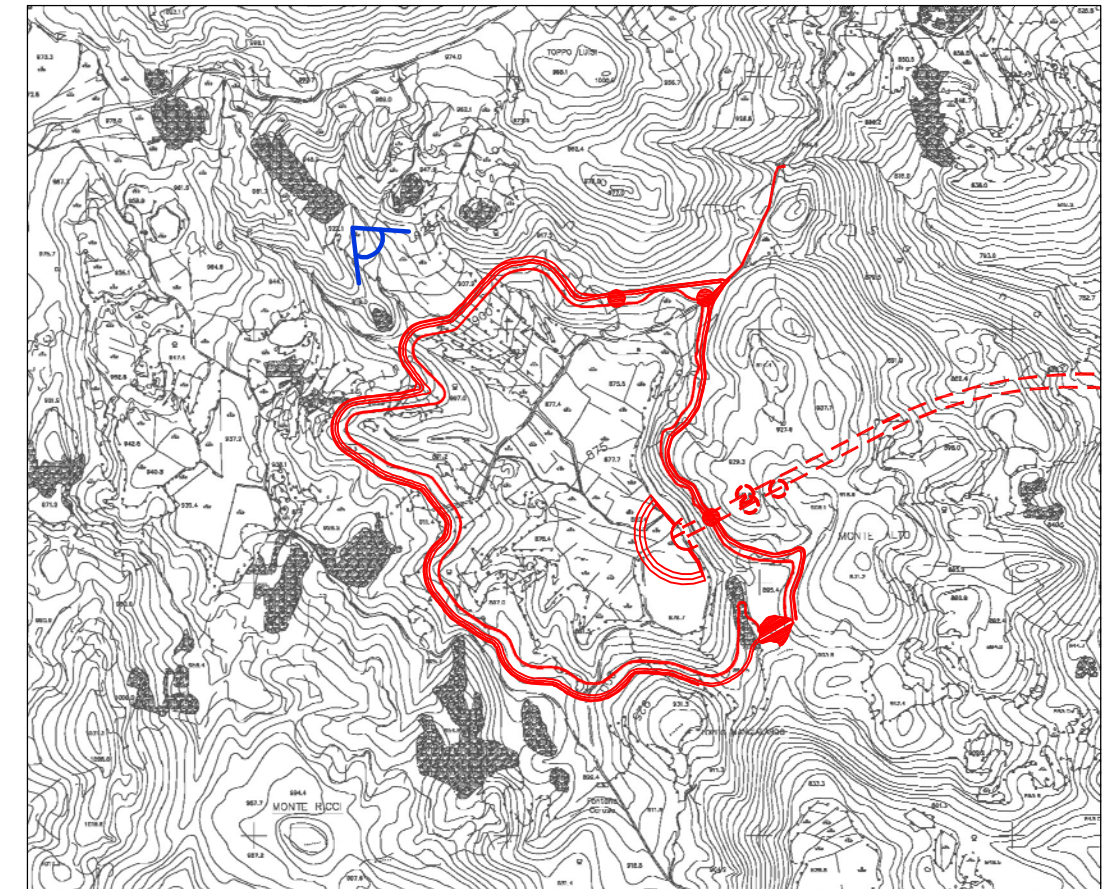




STATO ATTUALE

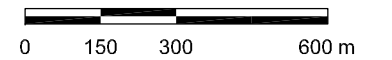


STATO DI PROGETTO






KEY MAP

SCALA



LEGENDA

OPERE A PROGETTO

-  GALLERIE
-  OPERE IN SOTTERRANEO
-  OPERE IN SUPERFICIE

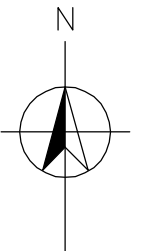


FIGURA 4.2a

FOTOINSERIMENTI BACINO DI MONTE ALTO,
PUNTO 1