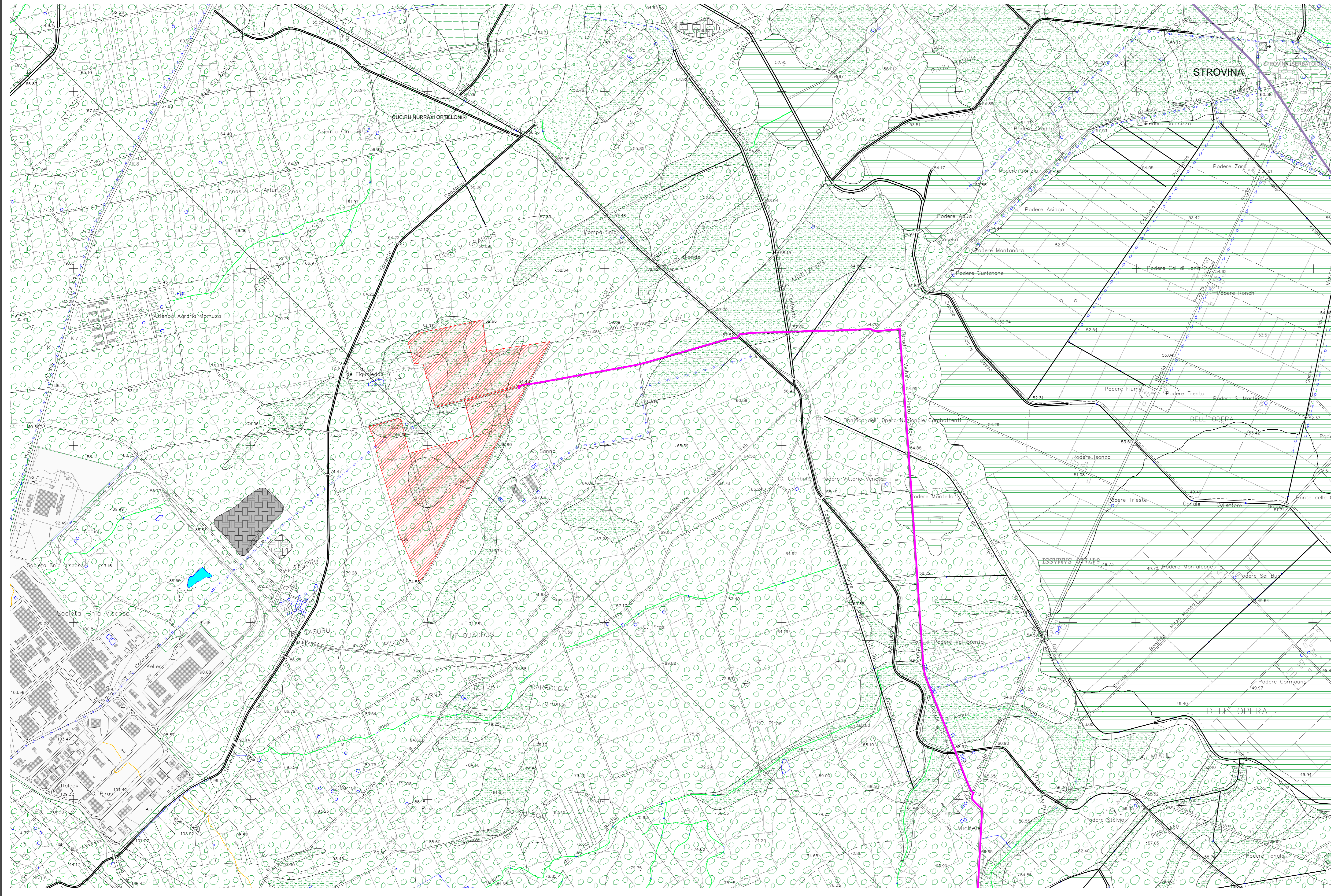
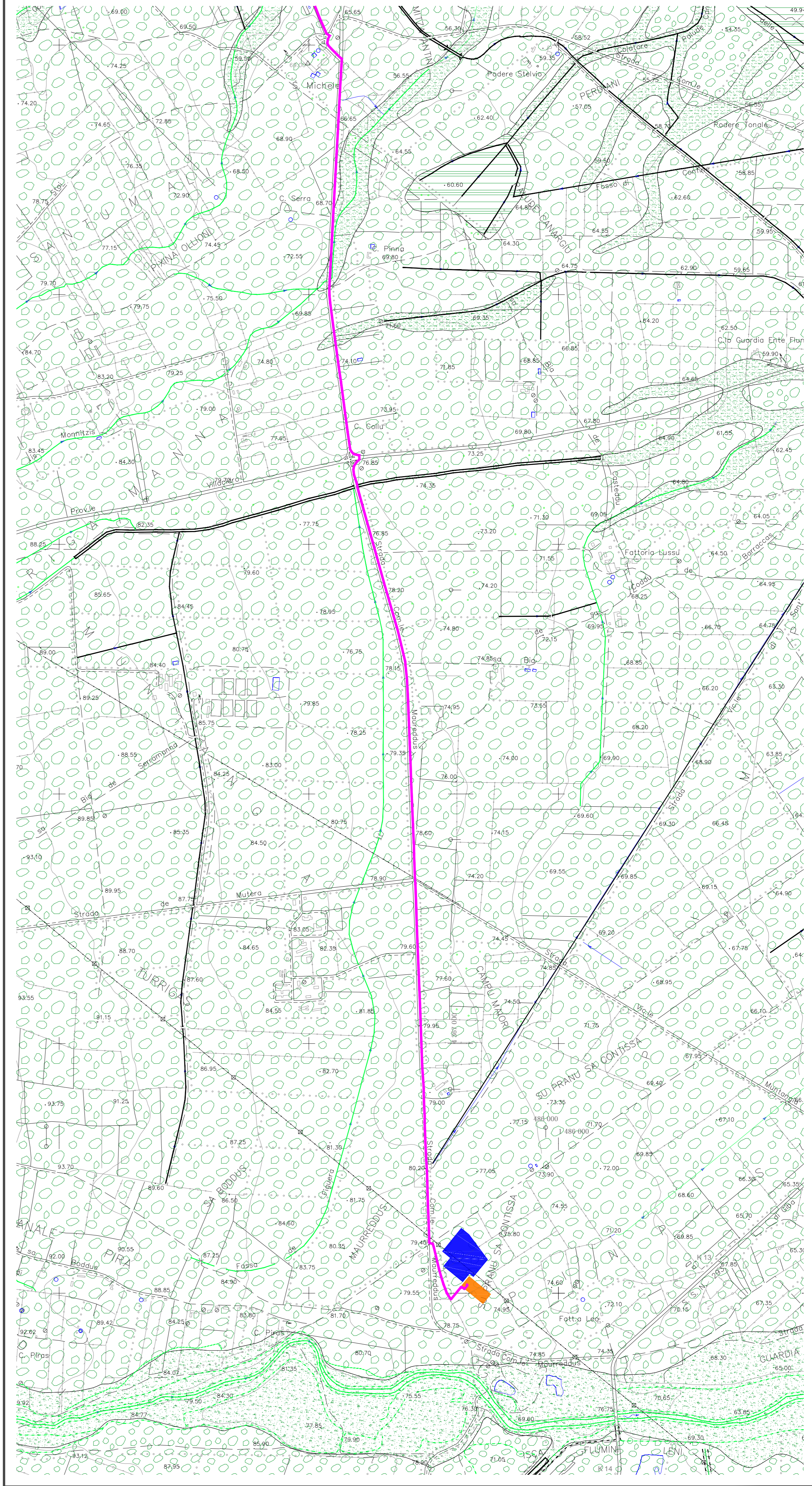


Carta geomorfologica - Riquadro 1



Carta geomorfologica - Riquadro 2



**PROGETTO PER LA REALIZZAZIONE DELL'IMPIANTO AGRIVOLTAICO "VILLACIDRO 3" E OPERE CONNESSE**

COMUNI DI VILLACIDRO E SAN GAVINO MONREALE (VS)

POTENZA MASSIMA DI IMMISSIONE IN RETE 50.000 kW  
POTENZA MASSIMA INSTALLATA PANNELLI 51.300 kWp

---

A	<b>ELABORATI AMBIENTALI</b>	DATA	REVISIONE	SCALA
CODICE	TITOLO	25/02/2022	1	1:10.000
A.GEO.5	<b>CARTA GEOMORFOLOGICA</b>			

---

<p><b>IL PROPONENTE</b></p> <p><b>GREEN ENERGY SARDEGNA 2 S.r.l.</b> Piazza del Grano, 3 39100 Bolzano (BZ)</p>	<p><b>IL TECNICO INCARICATO</b></p> <p>Dott. Geol. Marco Pilla Via A. Cattolani, 7 - 09128 Cagliari mob: +39 393 3197336 email pillamarco@hotmail.it</p>
---	--

GREENENERGYSARDEGNA2  
GREEN ENERGY SARDEGNA 2 S.r.l. Piazza del Grano, 3 39100 Bolzano (BZ)

**LEGENDA**

<p><b>Forme antropiche</b></p> <ul style="list-style-type: none"> <li><span style="display: inline-block; width: 20px; height: 10px; background-color: #cccccc; border: 1px solid black; margin-right: 5px;"></span> Aree fortemente antropizzate</li> <li><span style="display: inline-block; width: 20px; border-bottom: 2px solid black; margin-right: 5px;"></span> Canali artificiali</li> <li><span style="display: inline-block; width: 20px; height: 10px; background-image: linear-gradient(to right, #ccc 1px, transparent 1px), linear-gradient(to top, #ccc 1px, transparent 1px); background-size: 4px 4px; border: 1px solid black; margin-right: 5px;"></span> Discariche per rifiuti solidi urbani e industriali</li> <li><span style="display: inline-block; width: 20px; border-bottom: 1px dashed black; margin-right: 5px;"></span> Scaricata antropica</li> </ul>	<p><b>Forme e depositi fluviali</b></p> <ul style="list-style-type: none"> <li><span style="display: inline-block; width: 20px; height: 10px; background-color: #d9ead3; border: 1px solid black; margin-right: 5px;"></span> Depositi alluvionali. Ghiaie da grossolane a medie</li> <li><span style="display: inline-block; width: 20px; height: 10px; background-color: #d9ead3; border: 1px solid black; margin-right: 5px;"></span> Sabbie con subordinati limi e argille</li> <li><span style="display: inline-block; width: 20px; height: 10px; background-color: #d9ead3; border: 1px solid black; margin-right: 5px;"></span> Ghiaie con subordinate sabbie</li> <li><span style="display: inline-block; width: 20px; height: 10px; background-color: #d9ead3; border: 1px solid black; margin-right: 5px;"></span> Sabbie</li> <li><span style="display: inline-block; width: 20px; height: 10px; background-color: #d9ead3; border: 1px solid black; margin-right: 5px;"></span> Limi ed argille</li> <li><span style="display: inline-block; width: 20px; height: 10px; background-color: #d9ead3; border: 1px solid black; margin-right: 5px;"></span> Argille</li> <li><span style="display: inline-block; width: 20px; border-bottom: 2px solid green; margin-right: 5px;"></span> Corsi d'acqua a fondo piatto e/o concavo</li> <li><span style="display: inline-block; width: 20px; border-bottom: 2px dashed green; margin-right: 5px;"></span> Scaricata di erosione fluviale</li> <li><span style="display: inline-block; width: 20px; height: 10px; background-color: #f4cccc; border: 1px solid black; margin-right: 5px;"></span> Impianto agrivoltaico</li> <li><span style="display: inline-block; width: 20px; height: 10px; background-color: #0070c0; border: 1px solid black; margin-right: 5px;"></span> Centrale Terna</li> <li><span style="display: inline-block; width: 20px; height: 10px; background-color: #ff9900; border: 1px solid black; margin-right: 5px;"></span> Sottostazione</li> <li><span style="display: inline-block; width: 20px; border-bottom: 2px solid magenta; margin-right: 5px;"></span> Cavidotto</li> </ul>
--	--

