

**REGIONE BASILICATA**  
Comune di Pomarico (MT)



Progetto integrato agrivoltaico denominato “MASSERIA GLIONNA”:  
riattivazione di una azienda zootecnica dismessa e realizzazione di una  
centrale fotovoltaica di potenza nominale pari a 19,9980 MW con le  
relative opere connesse ed infrastrutture indispensabili

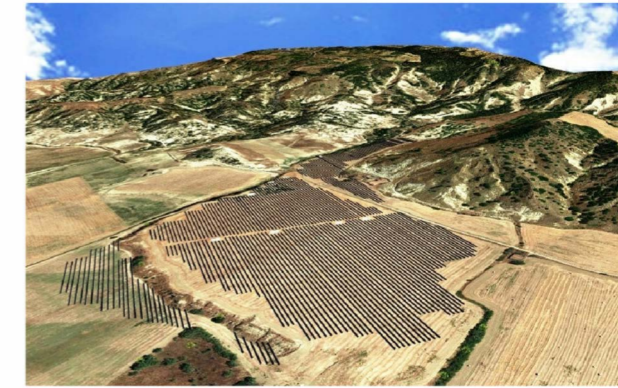


Tavola:  
**A.12.a.8.**

Elaborato:  
**CARTA GEOLOGICA**

Scala:  
**1:5.000**

PROPONENTE:

FOTOVOLTAICA SRL








**ROMEO GROUP**  
FOTOVOLTAICA

C.da Sant'Irene, Z.I.  
87064 Corigliano-Rossano (CS)

+39 (0983) 565374  
+39 (0983) 1980155

[www.romeogroup.it](http://www.romeogroup.it)  
[info@romeogroup.it](mailto:info@romeogroup.it)

**Legenda**

-  **Depositi alluvionali attuali**
-  **Depositi alluvionali recenti**
-  **Depositi alluvionali terrazzati**
-  **Argille subappennine, sabbiose giallastre**
-  **Asta fluviale**