



Engineering & Construction



WE ENGINEERING

EGP CODE

GRE.EEC.R.26.IT.W.15066.00.090.00

PAGE

1 di/of 1

TITLE: Relazione archeologica - VIARCH

AVAILABLE LANGUAGE: IT

**Progetto di un impianto eolico della potenza di 78 MW,
denominato "SINDIA",
Comuni di Macomer, Sindia, Borore (NU), Scano Montiferro,
Santu Lussurgiu (OR)**

RELAZIONE ARCHEOLOGICA - VIARCH

File: GRE.EEC.D.26.IT.W.15066.00.090.00_Tavole allegate alla relazione archeologica - VIARCH_Parte 1

00	30/01/2022	PRIMA EMISSIONE	S. Muratore	G. Alfano	L. Sblendido
REV.	DATE	DESCRIPTION	PREPARED	VERIFIED	APPROVED

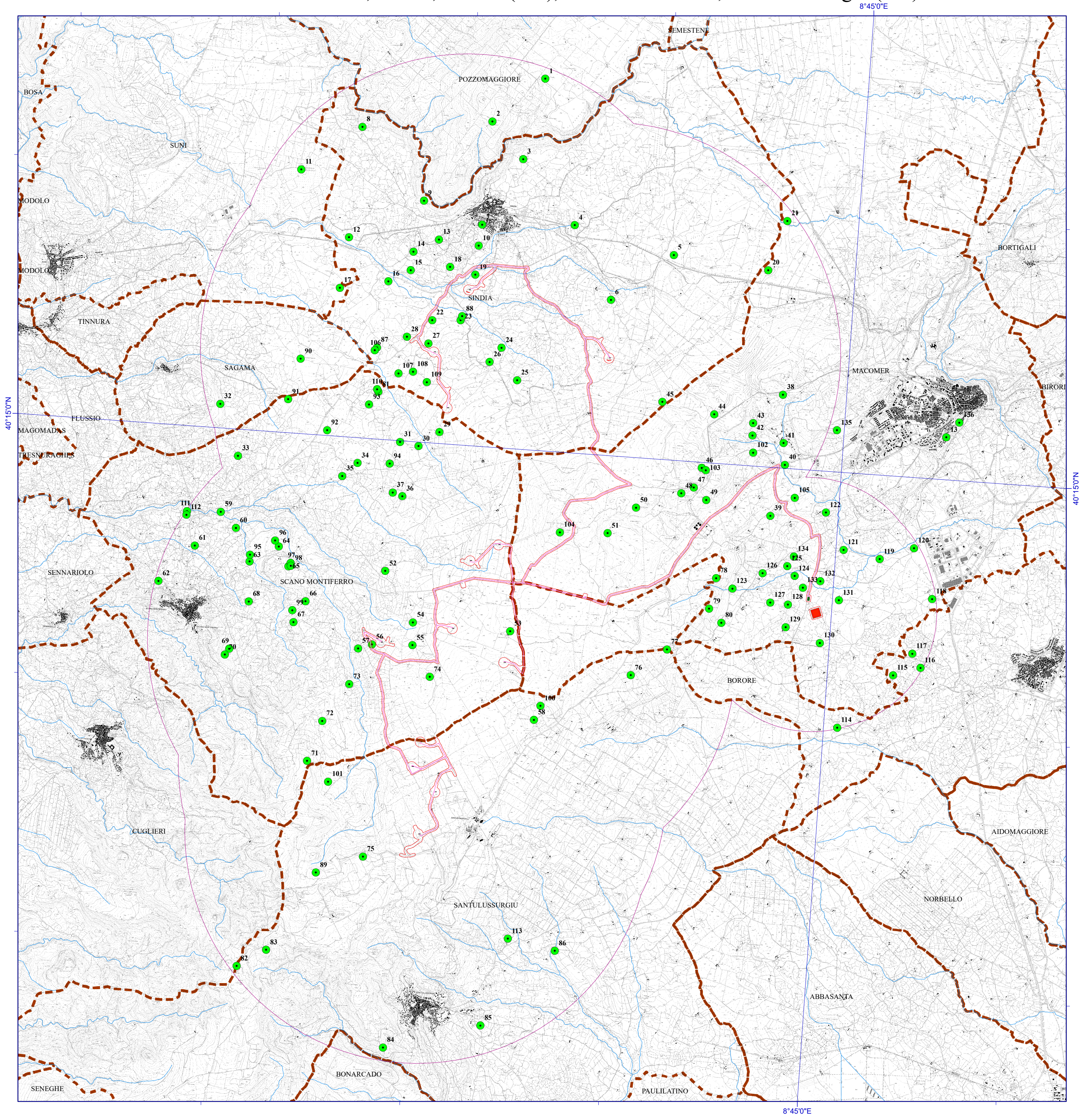
EGP VALIDATION

	<i>S. Abbate</i>	<i>A. Puosi</i>
COLLABORATORS	VERIFIED BY	VALIDATED BY

PROGETTO / IMPIANTO MACOMER 1	EGP CODE																		
	GROUP	FUNCTION	TYPE	ISSUER	COUNTRY	TEC	PLANT			SYSTEM	PROGRESSIVE	REVISION							
	GRE	EEC	R	2	6	I	T	W	1	5	0	6	6	0	0	0	9	0	0

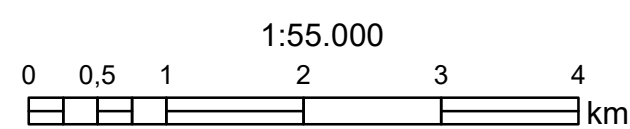
CLASSIFICATION	Company	UTILIZATION SCOPE	Preliminary
----------------	---------	-------------------	-------------

This document is property of Enel Green Power S.p.A. It is strictly forbidden to reproduce this document, in whole or in part, and to provide to others any related information without the previous written consent by Enel Green Power S.p.A.



LEGENDA

- Cavidotto
- Buffer_COMPLETO
- SITI_MACOMER_1
- Buffer 10 km
- fiumiTorrenti_ARC
- Limiti Amministrativi Comunali
- ◆ WTG
- CP, SSE**
- TIPO**
- CP
- SSE (stallo trasformatore)



INQUADRAMENTO GENERALE

