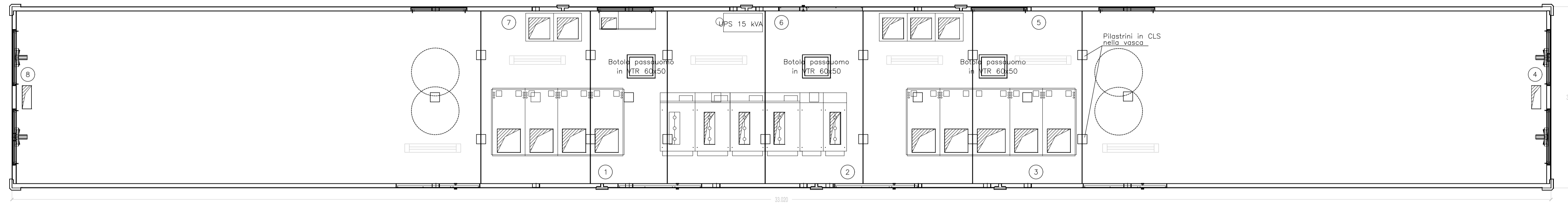
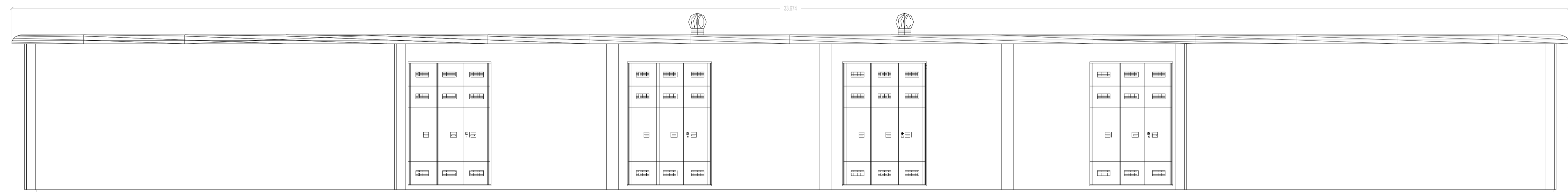


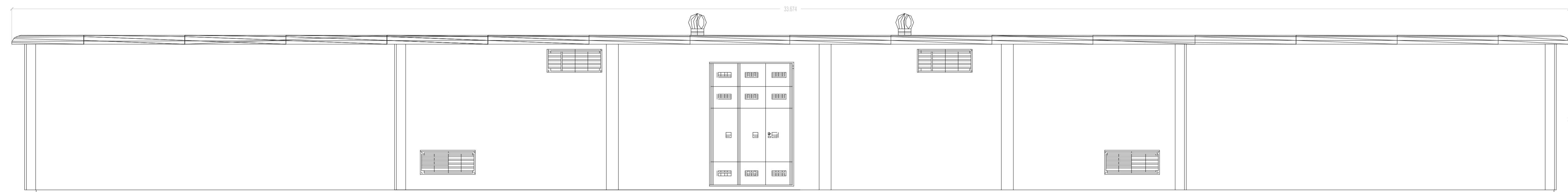
PLANIMETRIA



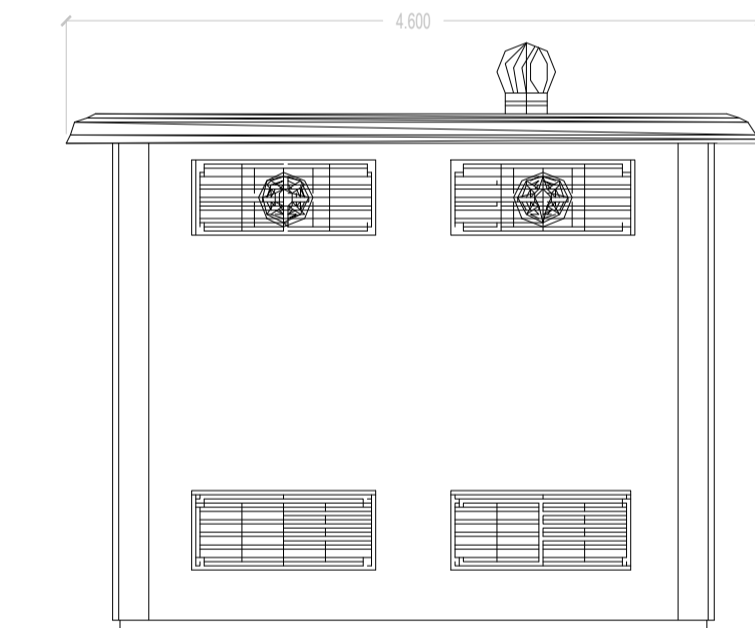
PROSPETTI



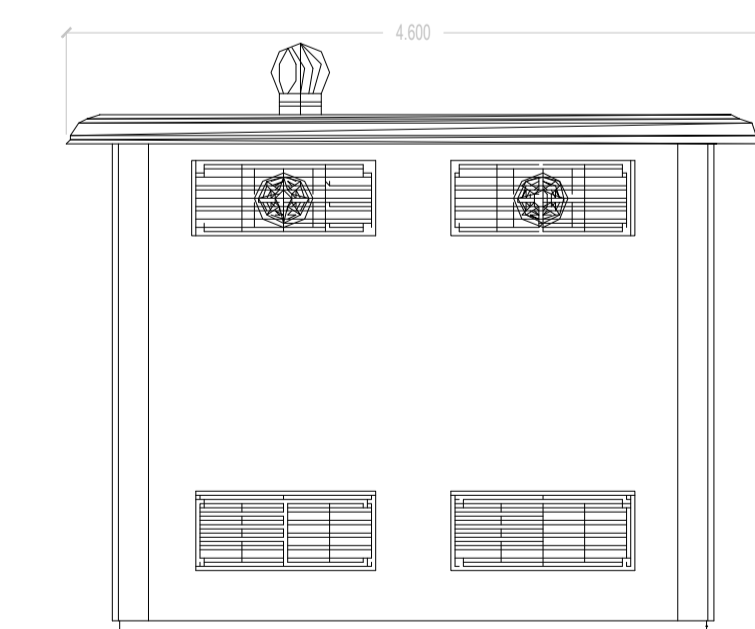
VISTA 1



VISTA 2



VISTA 3



VISTA 4










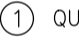

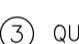




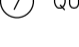


PLANIMETRIA DI RIFERIMENTO

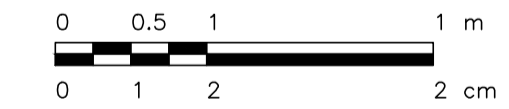
SCALA 1:10'000 - 1 cm = 100 m




LEGENDA

-  RECINZIONE IN PROGETTO
-  TRACKER
-  ACCESSO AREA IMPIANTO
-  VIABILITÀ INTERNA IN PROGETTO
-  UFFICI
-  MAGAZZINO
-  CABINA ELETTRICA POWER STATION
-  CABINA ELETTRICA MT
-  ILLUMINAZIONE 2x36W
-  ① QUADRO BT TRAF0 8
-  ② CELLE MT
-  ③ QUADRO BT TRAF0 4
-  ④ TRASFORMATORE BT/MT 3.150 kVA
-  ⑤ QUADRO SERVIZI ESTERNI BT
-  ⑥ UPS CELLE MT
-  ⑦ QUADRO SERVIZI CABINA
-  ⑧ TRASFORMATORE BT/MT 3.150 kVA

SCALA 1:50 - 1 cm = 0.5 m



OO	EMISSIONE	CV	MB/GG	FB	febbraio 22
Rev.	Descrizione	Redatto	Verificato	Approvato	Data

Proponente:  TEP RENEWABLES (FERRARA PV) S.R.L.
Viale Shakespeare, 71 - 00144 - Roma
P. IVA e C.F. 16462341005 - REA RM - 1658414

Oggetto: **IMPIANTO FOTOVOLTAICO FERRARA**
Comune di Ferrara (FE)
Potenza 26,95 MWp DC - 23MW AC

PROGETTO DEFINITIVO

Progettisti: Ing. Giulio Giombini - Iscritto all'Ordine degli Ingegneri della Provincia di Viterbo al n. A-1009
Ing. Matteo Bertoneri - Iscritto all'Ordine degli Ingegneri della Provincia di Massa Carrara al n. 669

Tavolo: **CABINA GENERALE MT** N. Tav. CV.T.09.01

Rif: 21-00007-IT-FERRARA_CV_T09_REVO_CABINA GENERALE MT Scala: 1:50
E' VIETATA LA RIPRODUZIONE DI QUESTO DOCUMENTO SENZA PREVENTIVA AUTORIZZAZIONE SCRITTA DELLA TEP RENEWABLES ITALIA S.R.L.