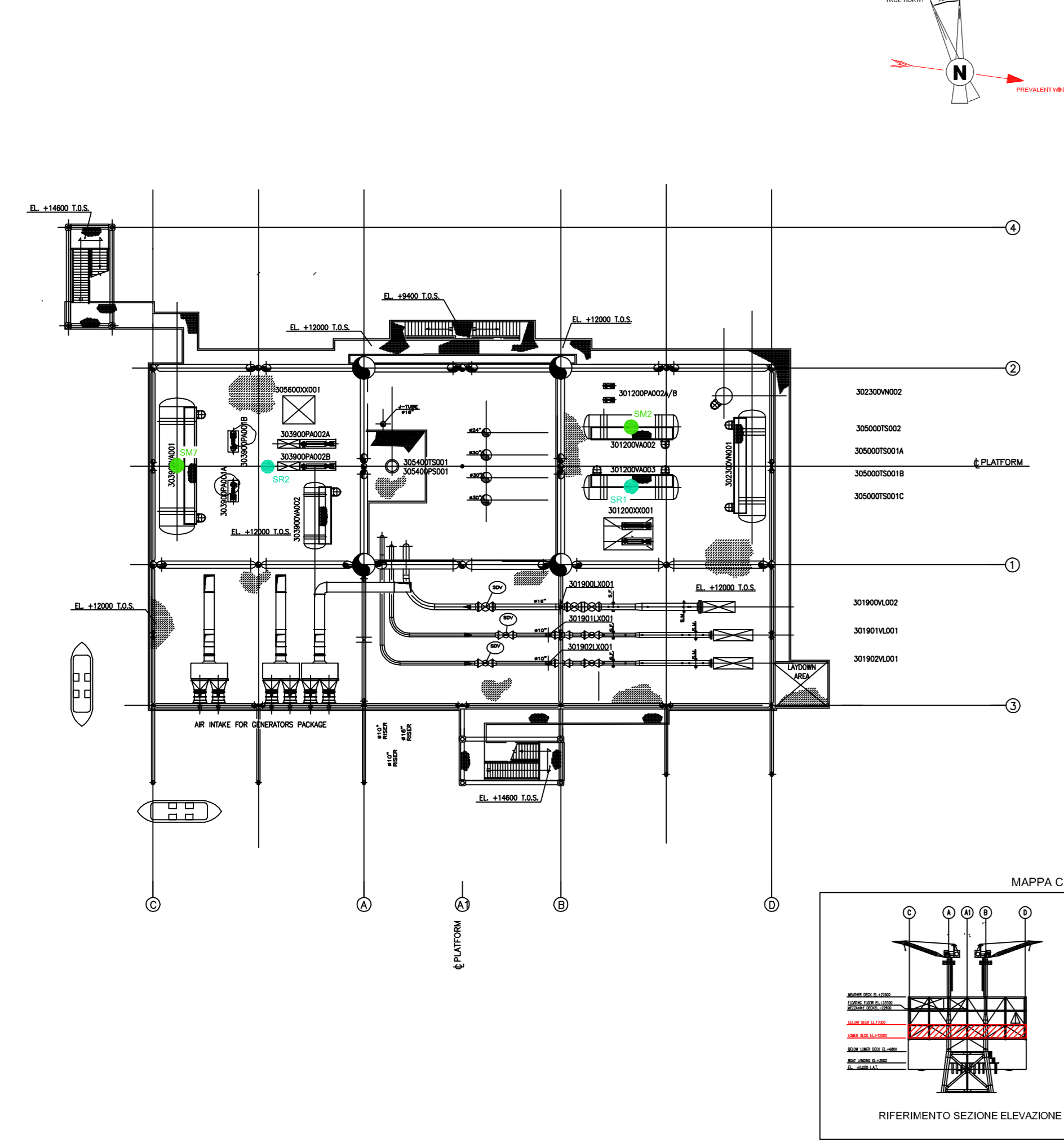
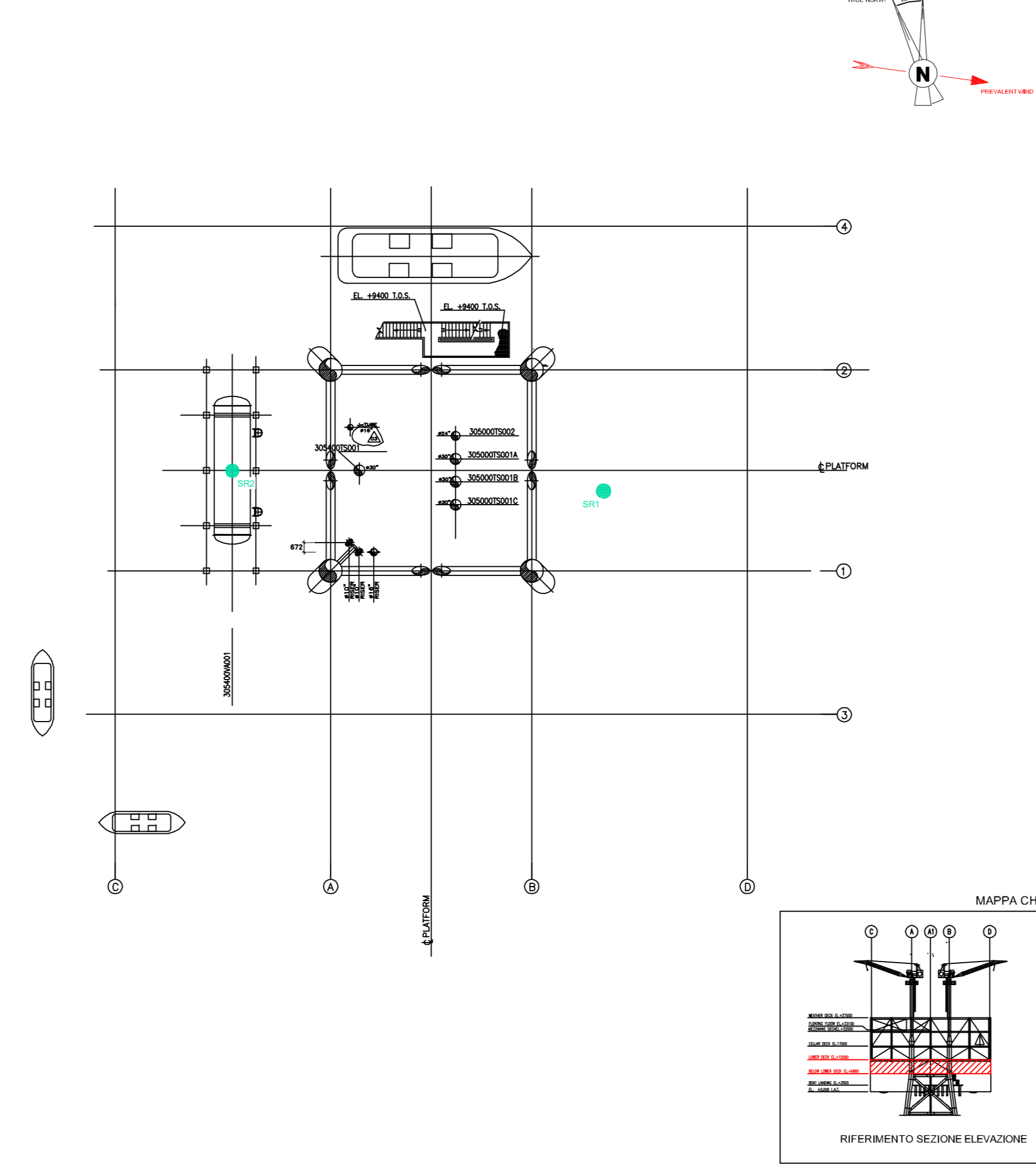


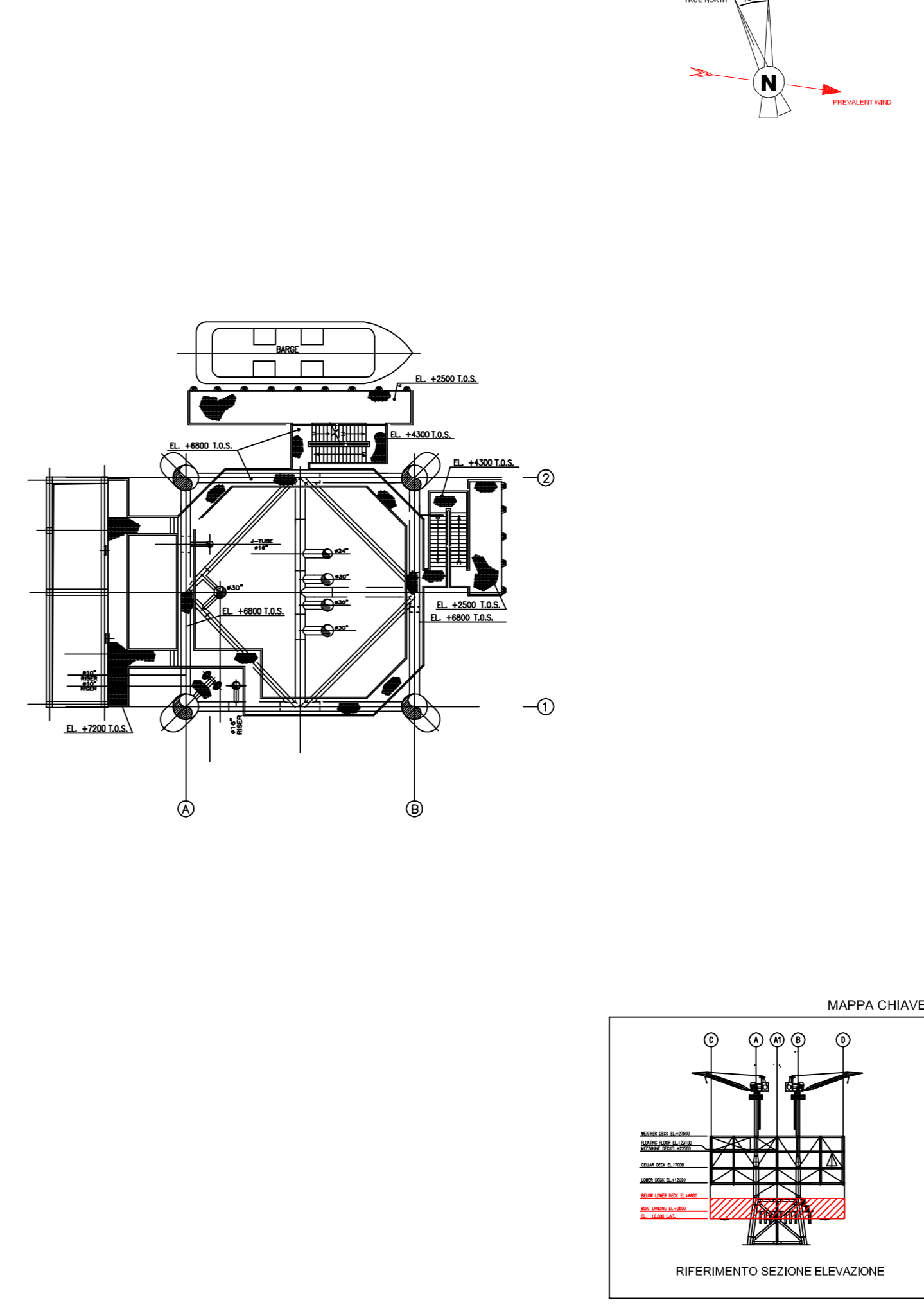
LOWER DECK
PLAN EL. +1200 TO +1700



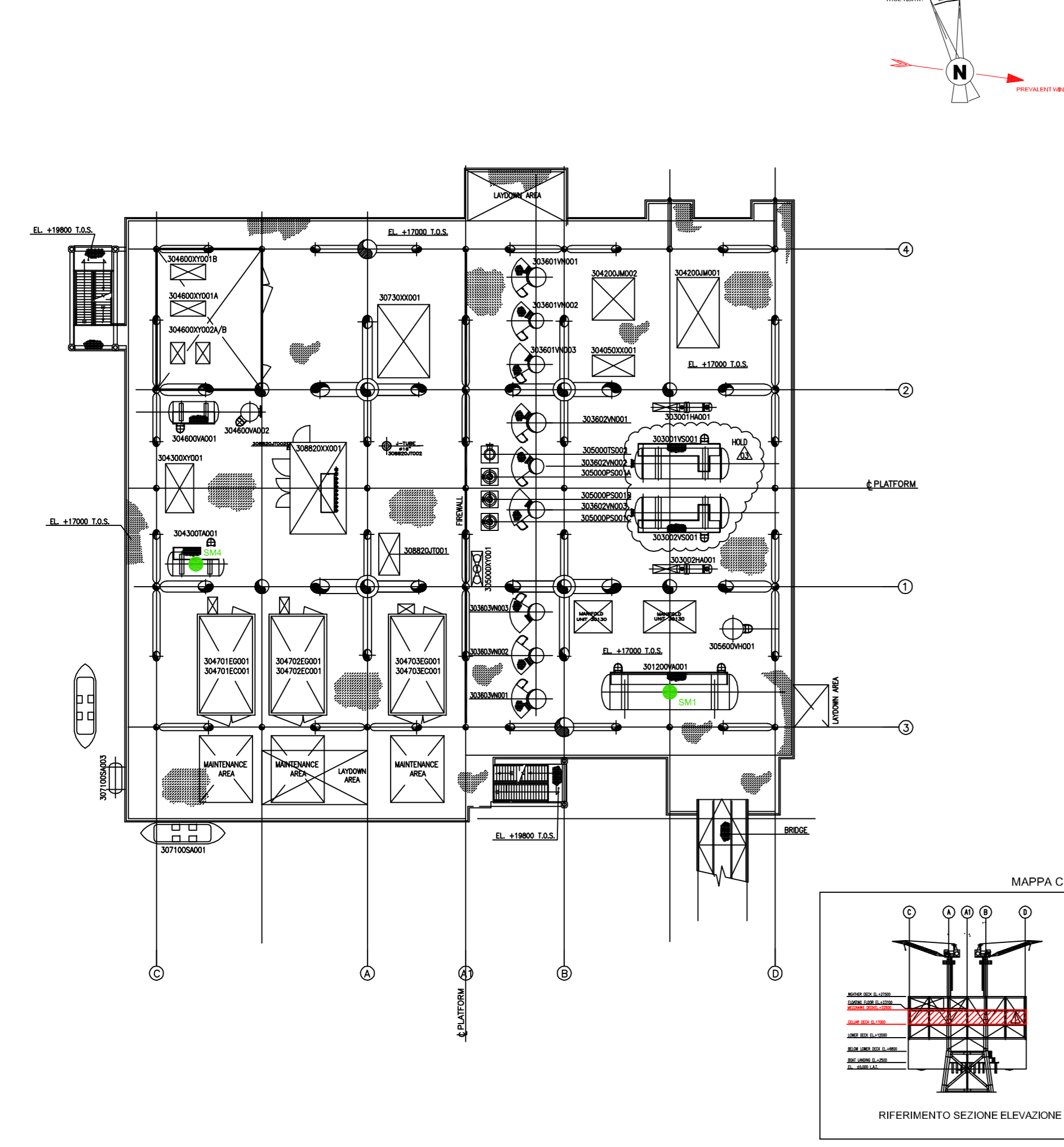
BELOW LOWER DECK
PLAN EL. +800 TO +1200



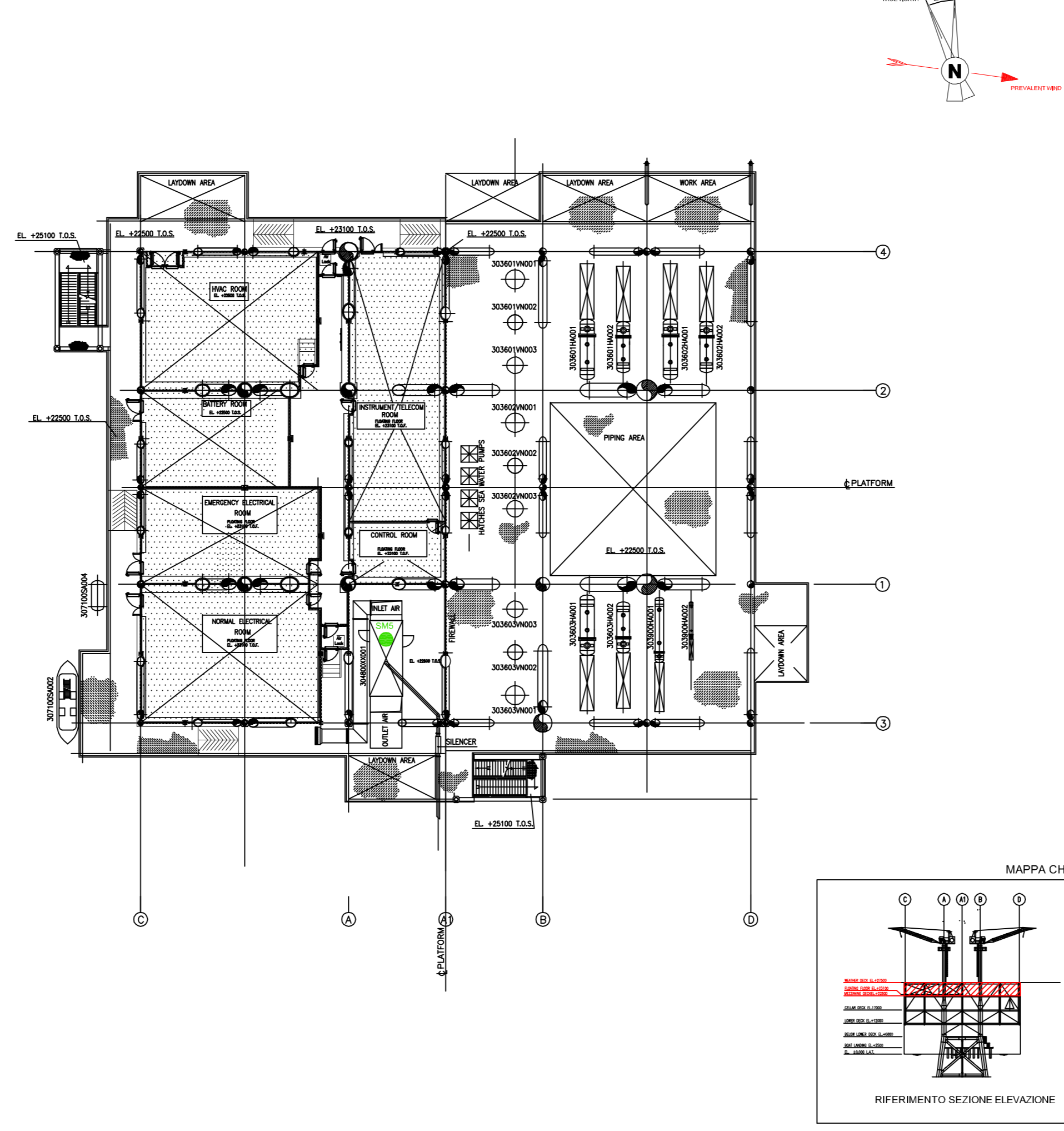
BOAT LANDING
PLAN EL. +600 TO +800



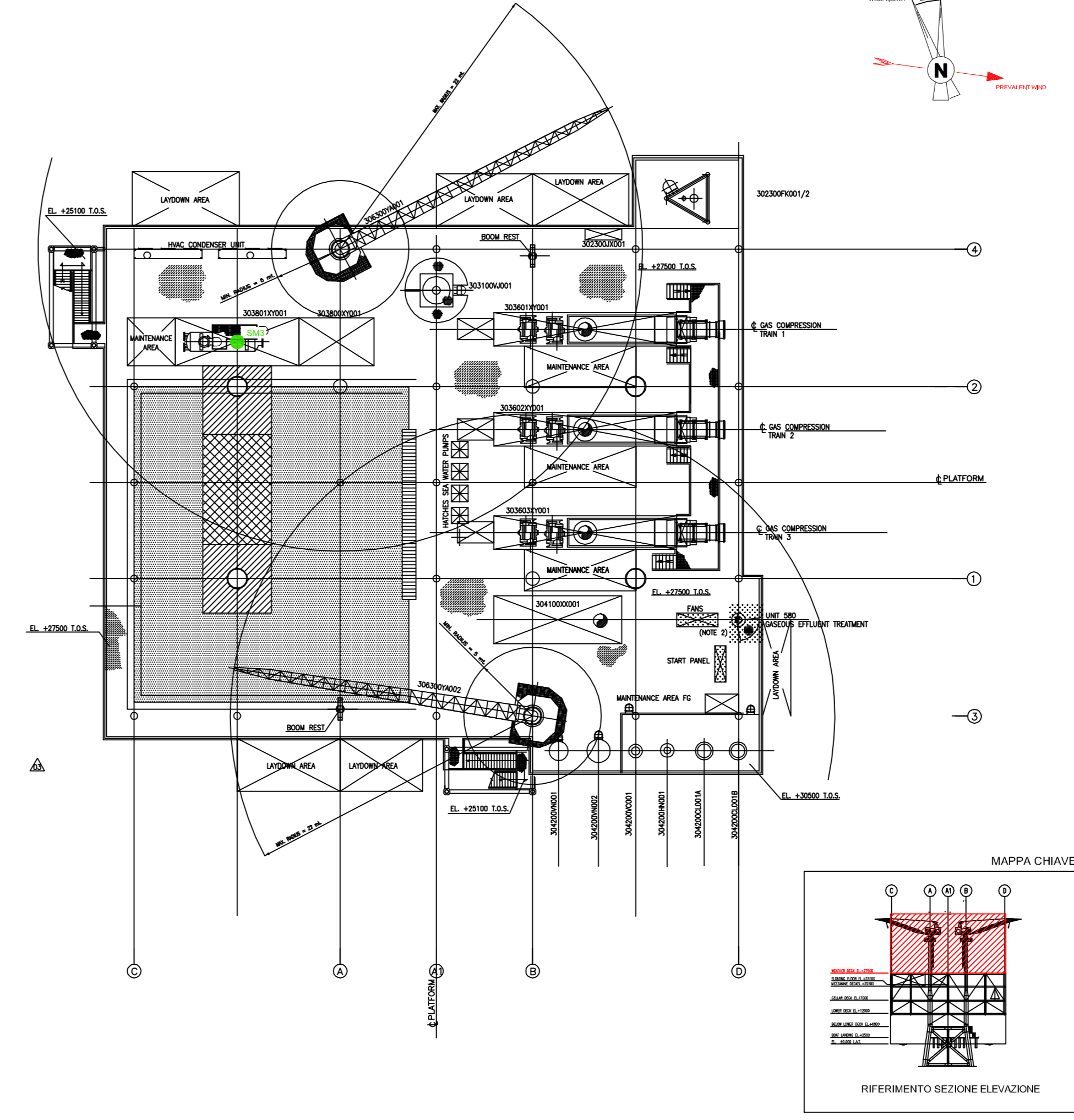
CELLAR DECK
PLAN EL. +1700 TO +2200



MEZZANINE DECK
PLAN EL. +2200 TO +2750



WEATHER DECK
PLAN EL. +2750 TO OVER



STOCCAGGIO RIFIUTI			
ID	DESCRIZIONE	LATTITUDE (WGS84 UTM33)	LATTITUDE (WGS84 UTM33)
SR1	Serbatoio - Exhaust MEG	427043.8847	4094810.1094
SR2	Contenitori - Acqua oleosa	401193.7371	4096255.3279
SR3 (1)	Contenitori - Rifiuti urbani o assimilabili agli urbani	ND	ND
SR4 (1)	Contenitori Rifiuti Speciali pericolosi e non	ND	ND

STOCCAGGIO MATERIE PRIME			
ID	DESCRIZIONE	LATTITUDE (WGS84 UTM33)	LATTITUDE (WGS84 UTM33)
SM1	Serbatoio - Lean MEG	429543.9017	4081755.3029
SM2	Serbatoio - Virgin MEG	427043.8843	4099055.3269
SM3	Serbatoio - Lean TEG	400543.8854	4106055.5382
SM4	Serbatoio - Diesel	395844.0115	4080855.2000
SM5	Serbatoio - Diesel	410742.4027	4085286.3411
SM6 (1)	Fresh Water	ND	ND
SM7	RichMEG	394743.8831	4096306.2129

NOTA

1) La localizzazione di dettaglio sarà definita nelle successive fasi di progettazione.

RIFERIMENTI

Eni 2011, Planimetrie Piattaforma Preziosa K, disegni numeri 000819008TDG63003; 000819008TDG63004; 000819008TDG63005; 000819008TDG63006; 000819008TDG63007; 000819008TDG63008; 000819008TDG63009

UNIT	UNIT
UNIT 3018	MANIFOLD
UNIT 3019	SEA LINE GAS
UNIT 3020	UNLOADING/RECEIVING TRAP
UNIT 3021	TOTAL SOLVENTON EXTINGUISHING FOR ROOM WITH POSSIBLE ROOMS PREHEAT
UNIT 3022	GAS SEPARATION
UNIT 3023	GAS SEPARATION
UNIT 3024	UNINTERRUPTIBLE POWER SUPPLY SYSTEM
UNIT 3025	GAS COMPRESSION
UNIT 3026	MAN ELECTRIC POWER DISTRIBUTION > 1000 V
UNIT 3027	CONTROL REGENERATION
UNIT 3028	HEAT REGENERATION
UNIT 3029	EMERGENCY ELECTRIC POWER DISTRIBUTION
UNIT 3030	HEATING
UNIT 3031	FLUE GAS
UNIT 3032	FUEL WATER TREATMENT
UNIT 3033	HEAT GAS
UNIT 3034	FLARE, VENT AND BLOWDOWN
UNIT 3035	GAS EFFLUENT TREATMENT
UNIT 3036	DIESEL PUMP
UNIT 3037	COMPRESSED AIR SYSTEM
UNIT 3038	MAN ELECTRIC POWER GENERATION
UNIT 3039	EMERGENCY ELECTRIC POWER GENERATION
UNIT 3040	SEA WATER (LOW AND MEDIUM PRESSURE)
UNIT 3041	FRESH WATER
UNIT 3042	OPEN DRAINS
UNIT 3043	CLOSED DRAINS
UNIT 3044	SEA WATER TREATMENT
UNIT 3045	HANDLING AND LIFTING EQUIPMENT
UNIT 3046	ANALYTICAL FREIGHTING SYSTEM
UNIT 3047	INSULATION SYSTEM
UNIT 3048	HEATING, VENTILATION AND AIR CONDITIONING (HVAC)
UNIT 3049	FIRE AND GAS DETECTION
UNIT 3050	ESCAPE AND PERSONNEL SAFETY
UNIT 3051	AD TO INJECTION
UNIT 3052	TOTAL SOLVENTON EXTINGUISHING FOR ROOM WITH POSSIBLE ROOMS PREHEAT
UNIT 3053	UNINTERRUPTIBLE POWER SUPPLY SYSTEM
UNIT 3054	MAN ELECTRIC POWER DISTRIBUTION > 1000 V
UNIT 3055	EMERGENCY ELECTRIC POWER DISTRIBUTION
UNIT 3056	STARTING SYSTEM
UNIT 3057	ESCAPE SYSTEM
UNIT 3058	TELECOMMUNICATIONS
UNIT 3059	CONTROL SYSTEM
UNIT 3060	ESD SYSTEM
UNIT 3061	FLOWRAIS
UNIT 3062	REZINGING TRAP
UNIT 3063	FLARE, VENT AND BLOWDOWN
UNIT 3064	FISAL METERING SYSTEM
UNIT 3065	DEPRESSURED AIR SYSTEM
UNIT 3066	FIRE AND GAS DETECTION
UNIT 3067	ESCAPE AND PERSONNEL SAFETY
UNIT 3068	TOTAL SOLVENTON EXTINGUISHING FOR ROOM WITH POSSIBLE ROOMS PREHEAT
UNIT 3069	UNINTERRUPTIBLE POWER SUPPLY SYSTEM
UNIT 3070	MAN ELECTRIC POWER DISTRIBUTION > 1000 V
UNIT 3071	EMERGENCY ELECTRIC POWER DISTRIBUTION
UNIT 3072	CONTROL SYSTEM
UNIT 3073	ESD SYSTEM

exploration & production

Progetto
Progetto OFFSHORE IBLEO
Piattaforma Preziosa K
 Documentazione Tecnica Allegata alla Domanda di Autorizzazione Integrata Ambientale

Tavola
ALLEGATO B.22
PLANIMETRIA DELLO STABILIMENTO CON INDIVIDUAZIONE DELLE AREE PER LO STOCCAGGIO DI MATERIE E RIFIUTI

Preparato

Nome File	Num. Allegato	Documento
-	B.22	000106_DV_CD.HSE.0216.000_00

DATA
 SCALA