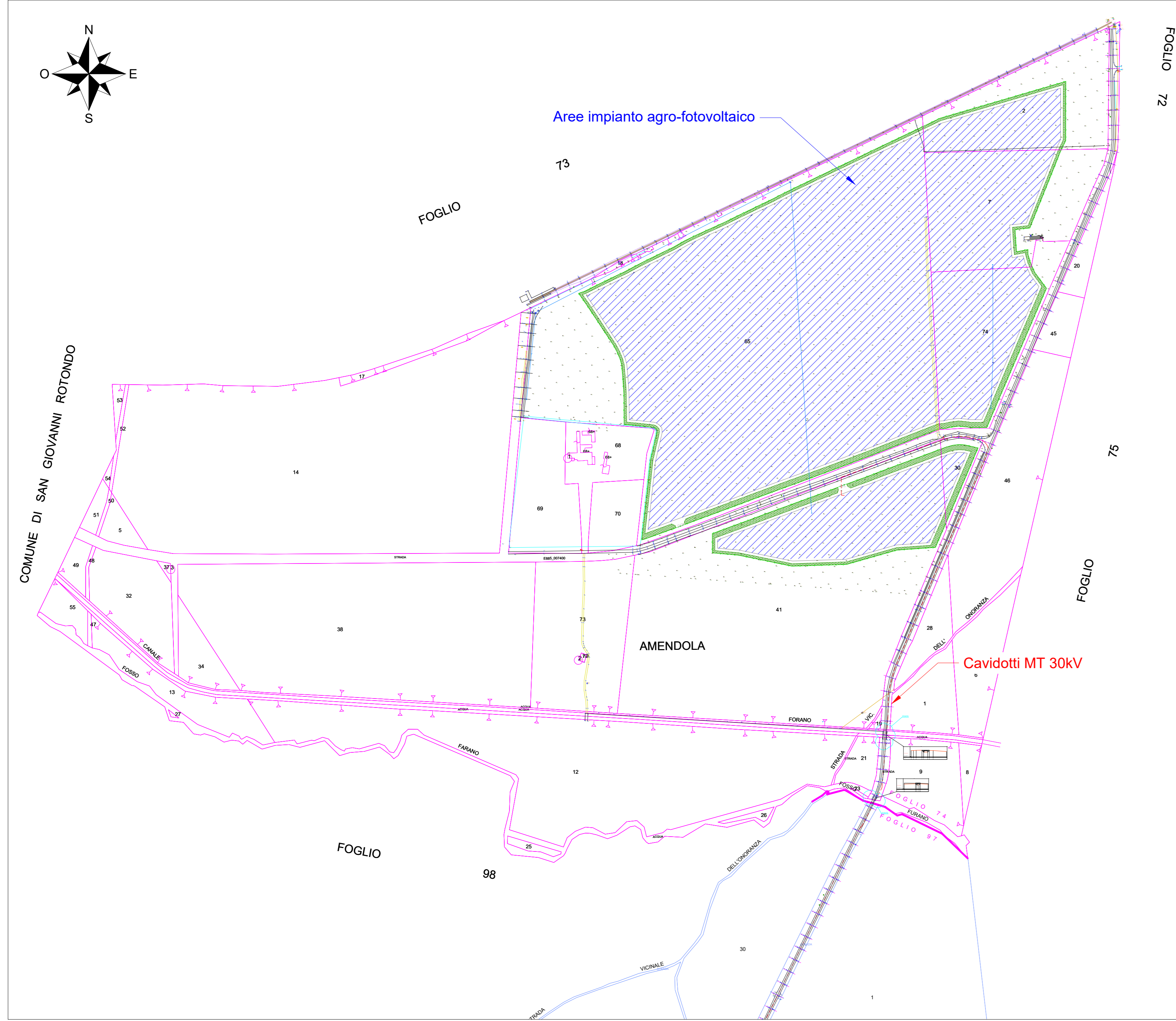
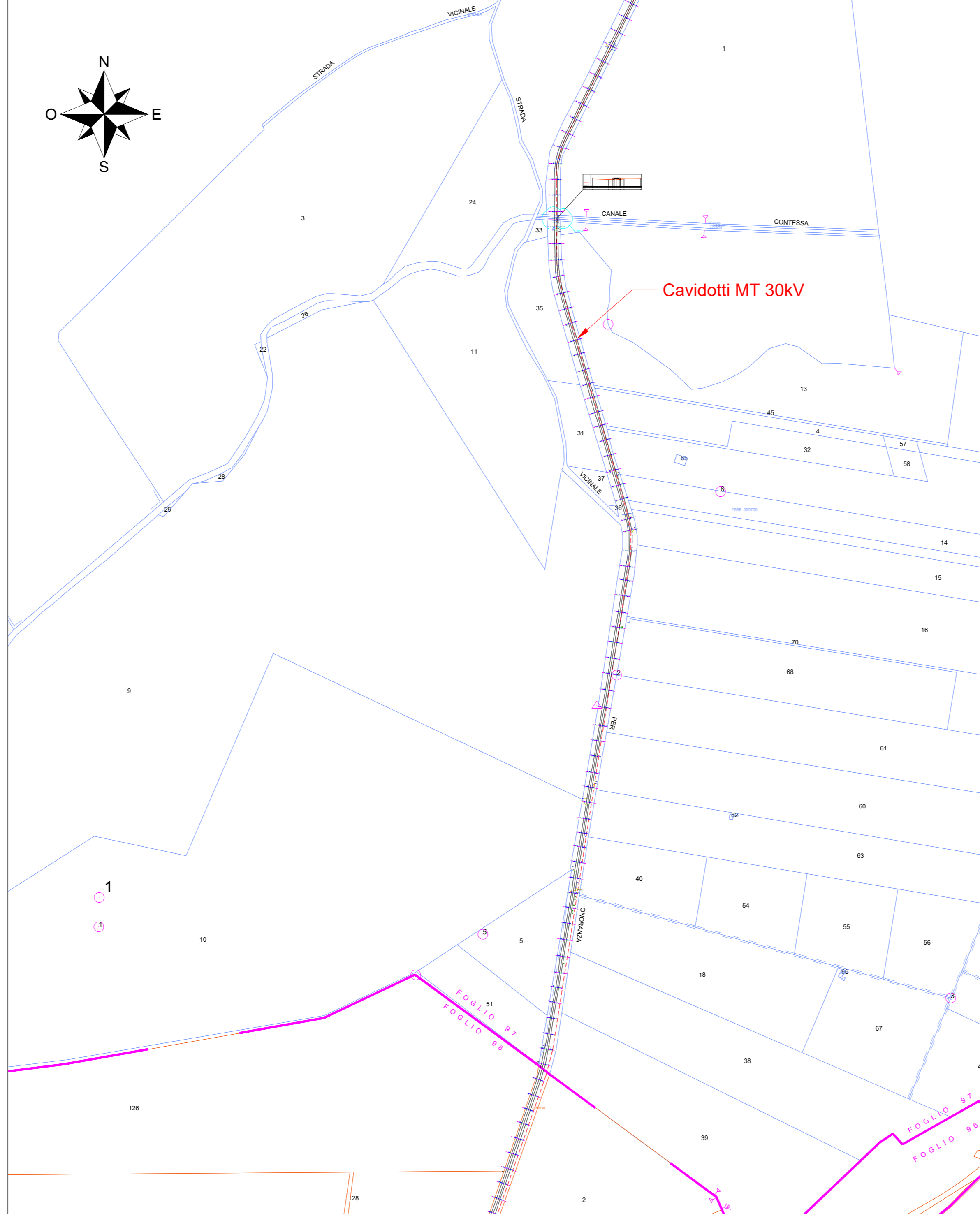


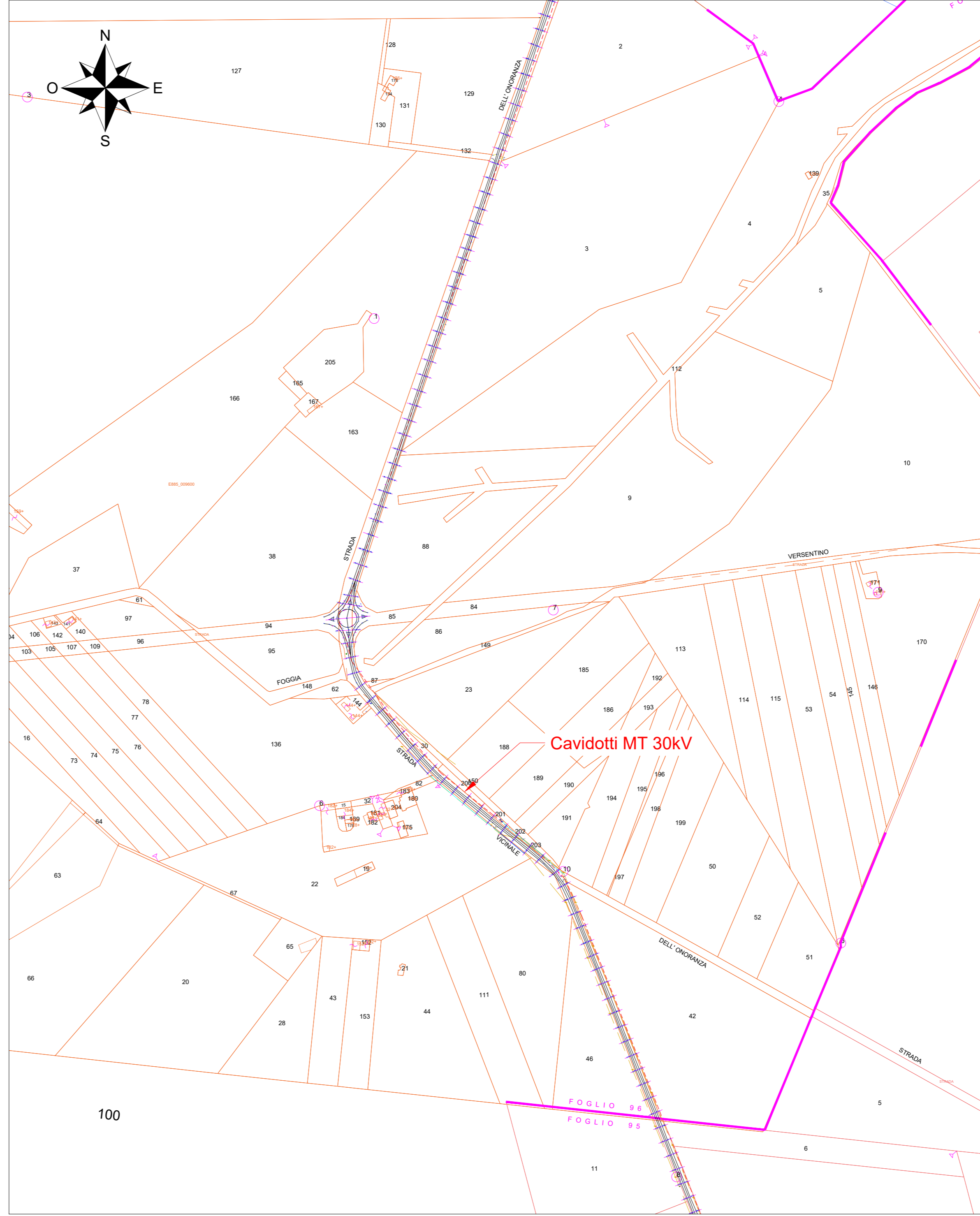
Vista A - Scala 1:5000



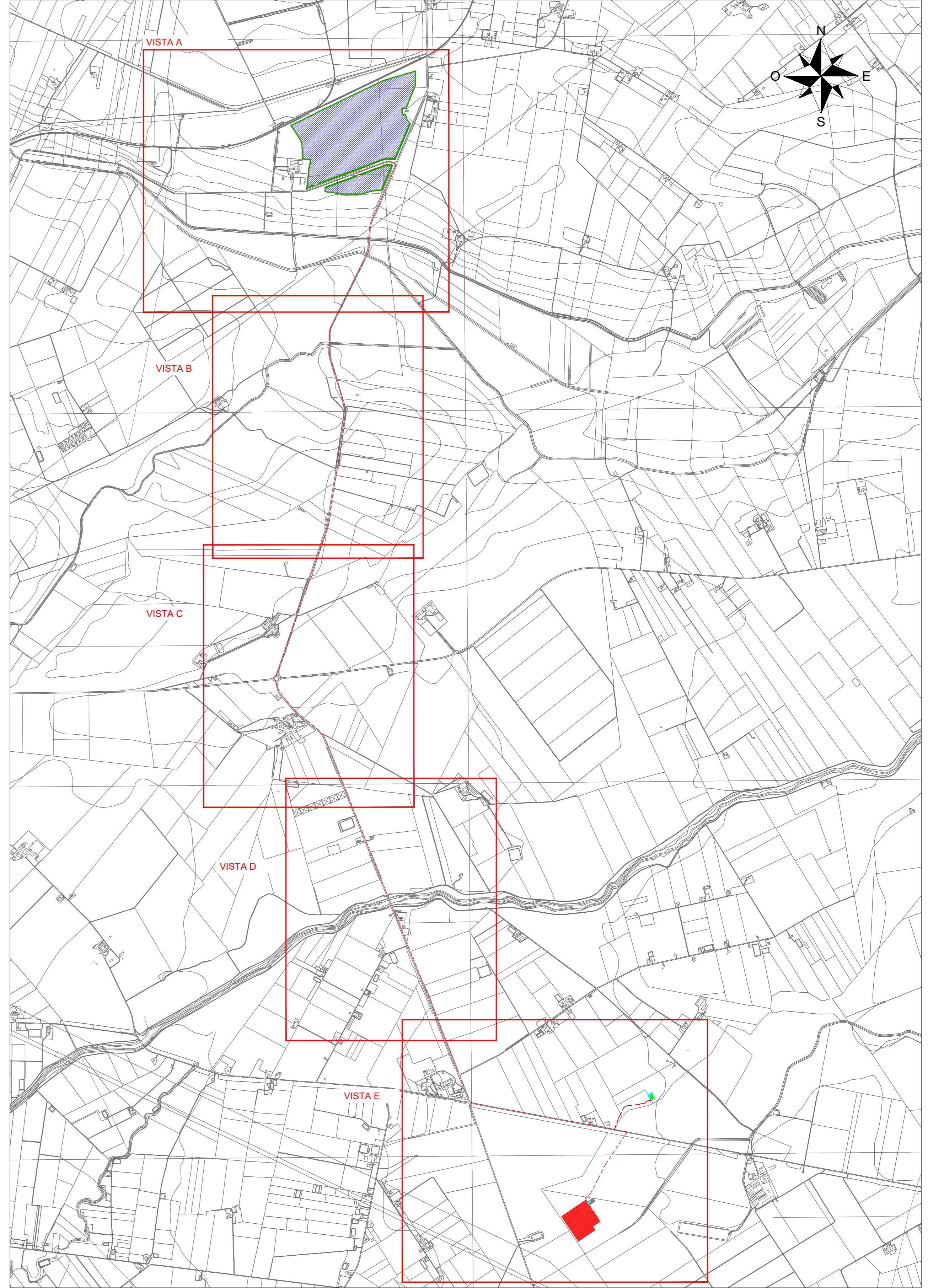
Vista B - Scala 1:5000



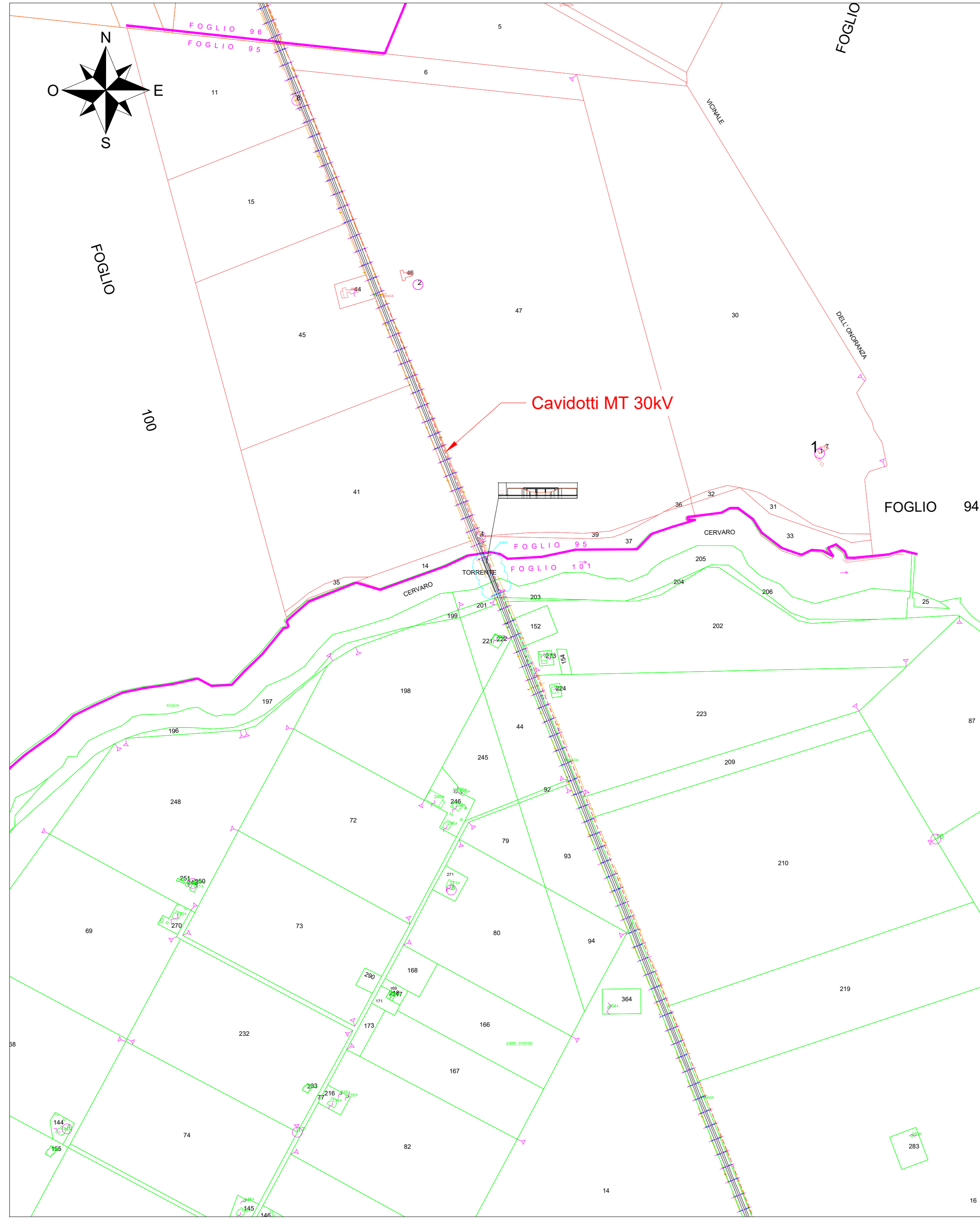
Vista C - Scala 1:5000



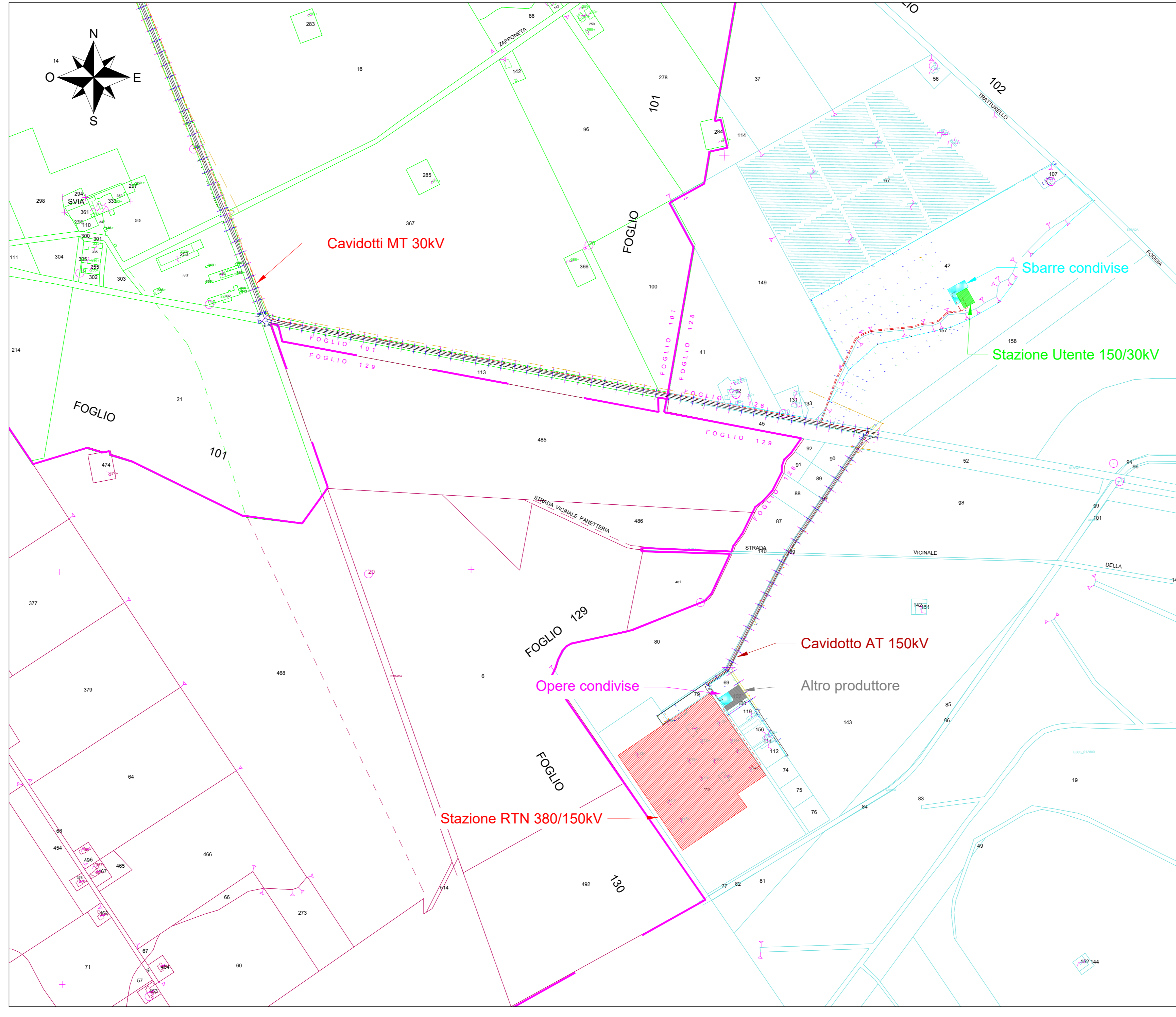
Inquadramento generale - Scala 1:20000



Vista D - Scala 1:5000



Vista E - Scala 1:5000



LEGENDA

- Recinzione impianto agro-fotovoltaico
- Fascia arborea perimetrale impianto agro-fotovoltaico
- Area impianto agro-fotovoltaico
- Cancelli di accesso impianto agro-fotovoltaico
- Cavidotto MT Dorsale 2 30kV
- Cavidotto AT 150kV
- Stazione RTN 380/150 kV
- Stazione Utente 150/30kV
- Sbarre condivise
- Opere condivise
- Area stazione utente altro produttore

COMITENTE		wood.		STUDIO DI PROGETTAZIONE	
Wood Solare Italia S.r.l. Via Sebastiano Caboto, 15 20094 Corsico (MI)					
OGGETTO		REVISIONI		APPROVED FOR CONSTRUCTION	
Rilievo planimetrico aree d'impianto agro-fotovoltaico		37613,4 kWp (33860 kW in immissione) ed opere connesse Comune di Manfredonia (FG) PROGETTO DEFINITIVO IMPIANTO AGRO-FOTVOLTAICO		Tav.25	
REV.	DATE	DESCRIPTION	BY	CHK	APP.
0	FEB-22	EMESSO PER ITER AUTORIZZATIVO			
CAD FILE NAME:		DWG REV.		DATE	
		SIGNATURE:		DATE	
		ORDER N°:		SCALE	
		SUPPLIER:		VARIE	
		CONTRACT N°:		REV	
		SUBPROJECT CODE:		D/EET	
		THIS DWG SUPERSEDES:		OF	
		THIS DWG SUPERSEDES:		841x1500	