



**ANTE** AREA A  
Bonetti

 37°31'10.30"N  
14°44'20.15"E



**POST**

 GARIGA  MACCHIA  BOSCO






**ANTE** AREA B  
Cavallarovv

 37°30'26.51"N  
14°30'53.33"E



**POST**

 GARIGA  MACCHIA  BOSCO






**ANTE** AREA C  
Vassallo

 37°30'33.38"N  
14°42'5.67"E




**POST**

 GARIGA  MACCHIA  BOSCO



**ANTE** AREA D  
San Giovanni Bellone

 37°31'10.30"N  
14°44'20.15"E



**POST**



GARIGA




MACCHIA



BOSCO



**ANTE** AREA E  
Franchetto

 37°30'26.51"N  
14°30'53.33"E



**POST**



GARIGA



MACCHIA



BOSCO



**ANTE** AREA I  
Mirrino

 37°28'3.94"N  
14°46'15.35"E



**POST**



GARIGA



MACCHIA



BOSCO



**ANTE** AREA A  
BONETTI  
37°30'31.23"N  
14°43'21.41"E



**POST**  
GARIGA MACCHIA BOSCO



**ANTE** AREA B  
CAVALLARO  
37°30'55.02"N  
14°43'18.35"E



**POST**  
GARIGA MACCHIA BOSCO



**ANTE** AREA C1  
VASSALLO  
37°30'42.97"N  
14°42'12.41"E



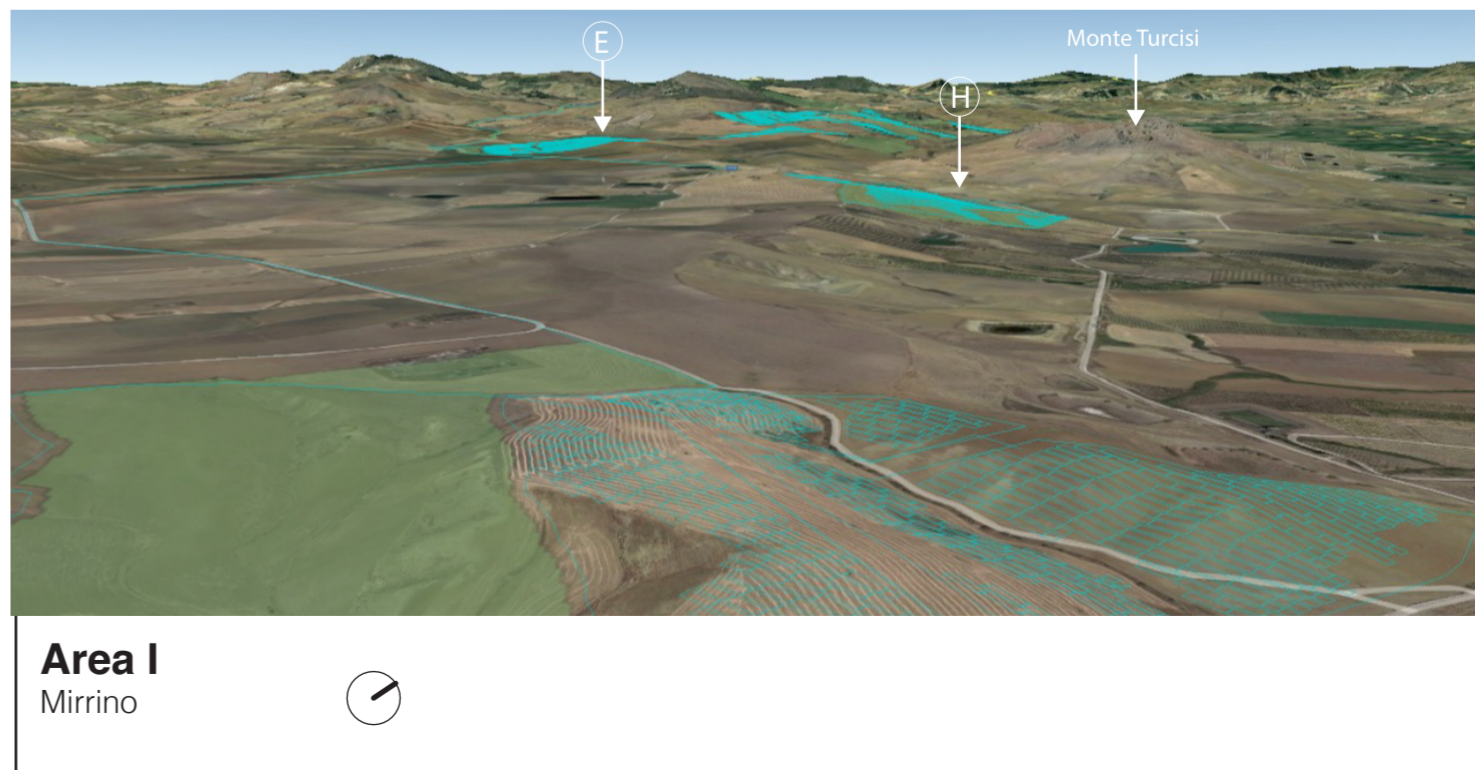
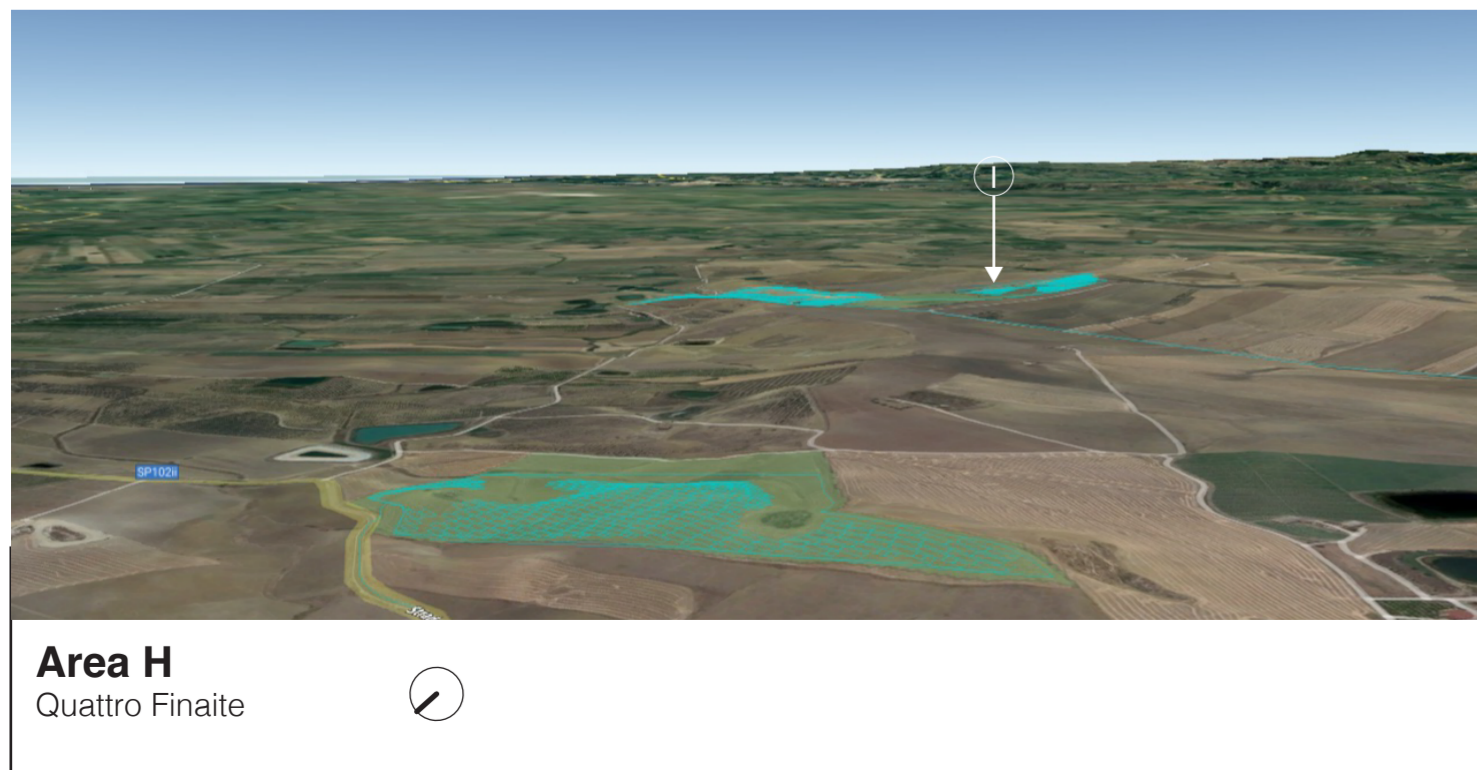
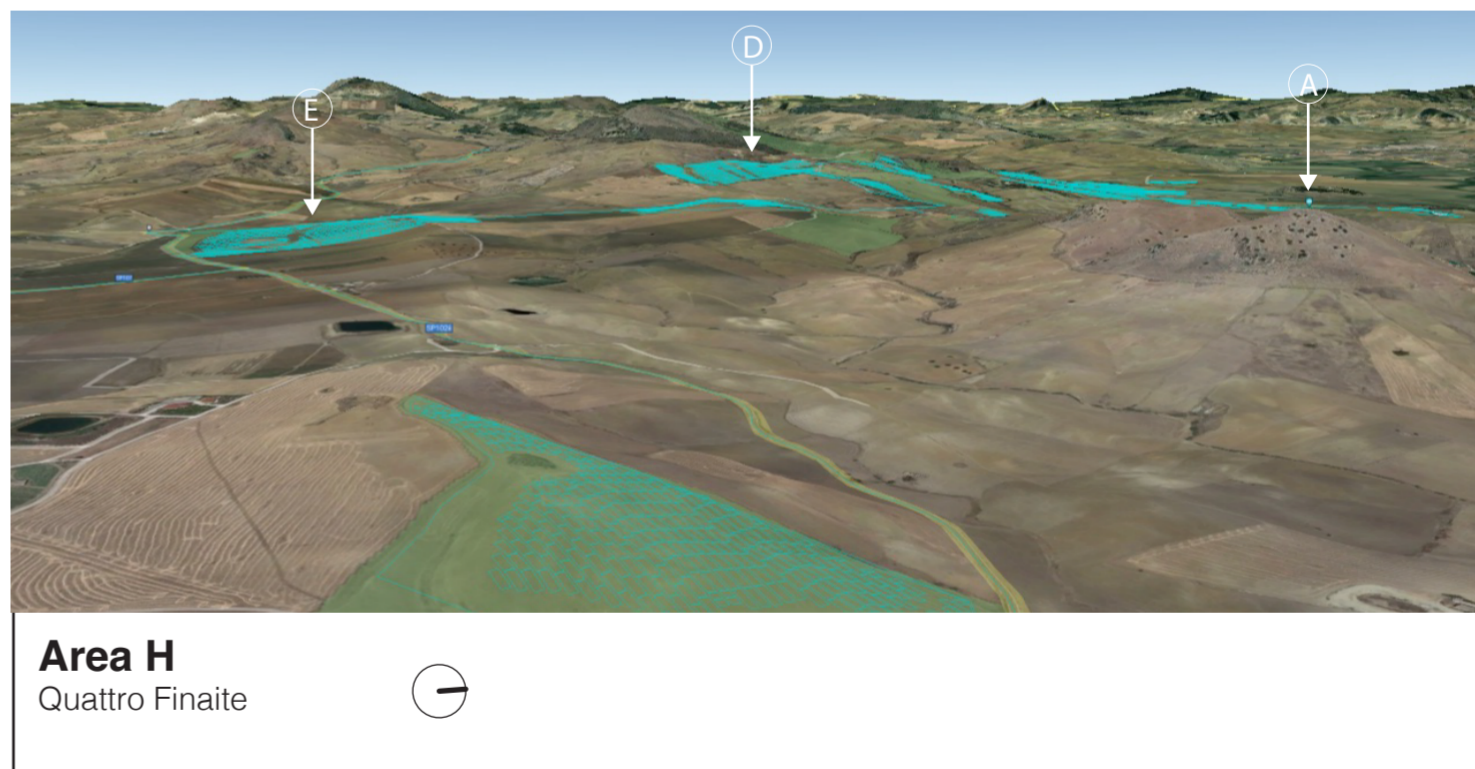
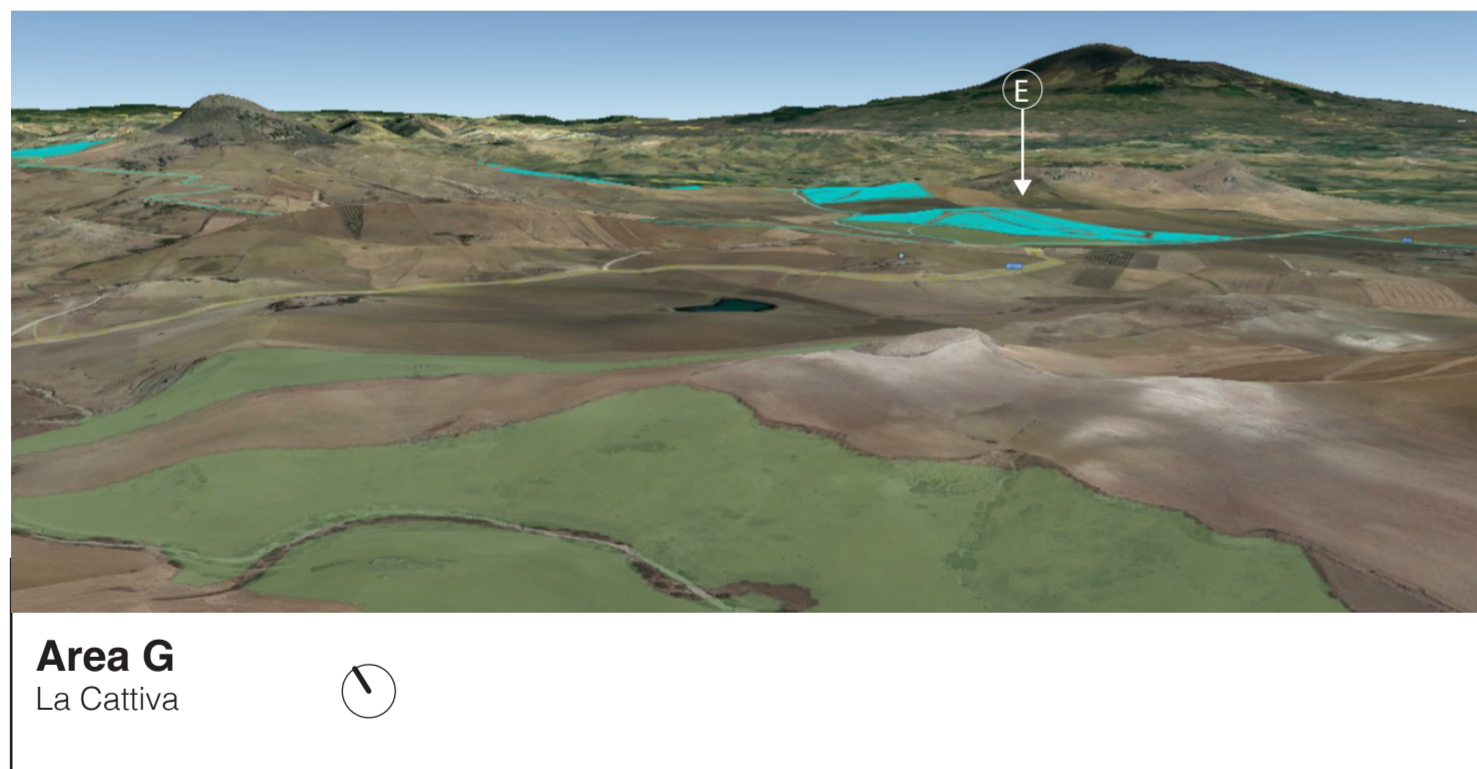
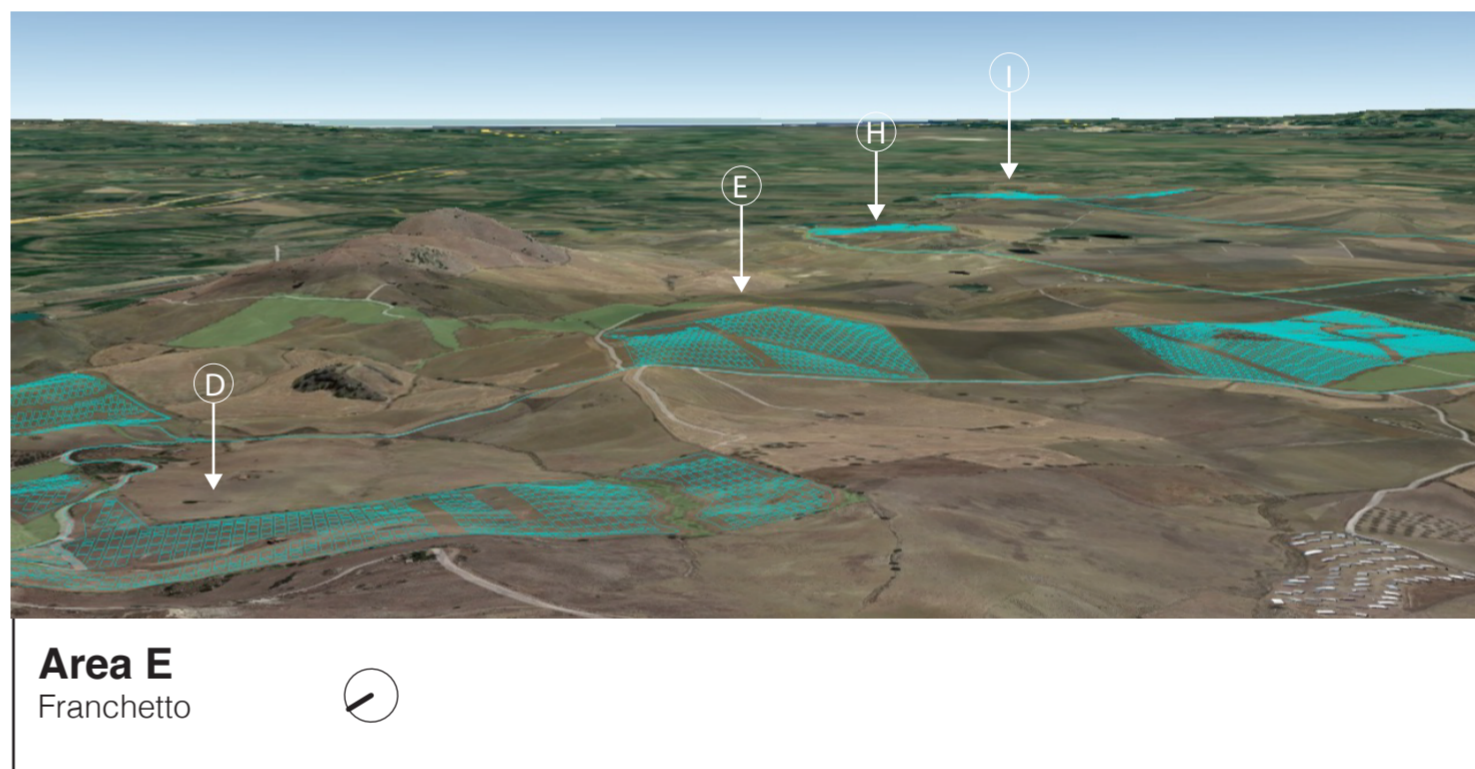
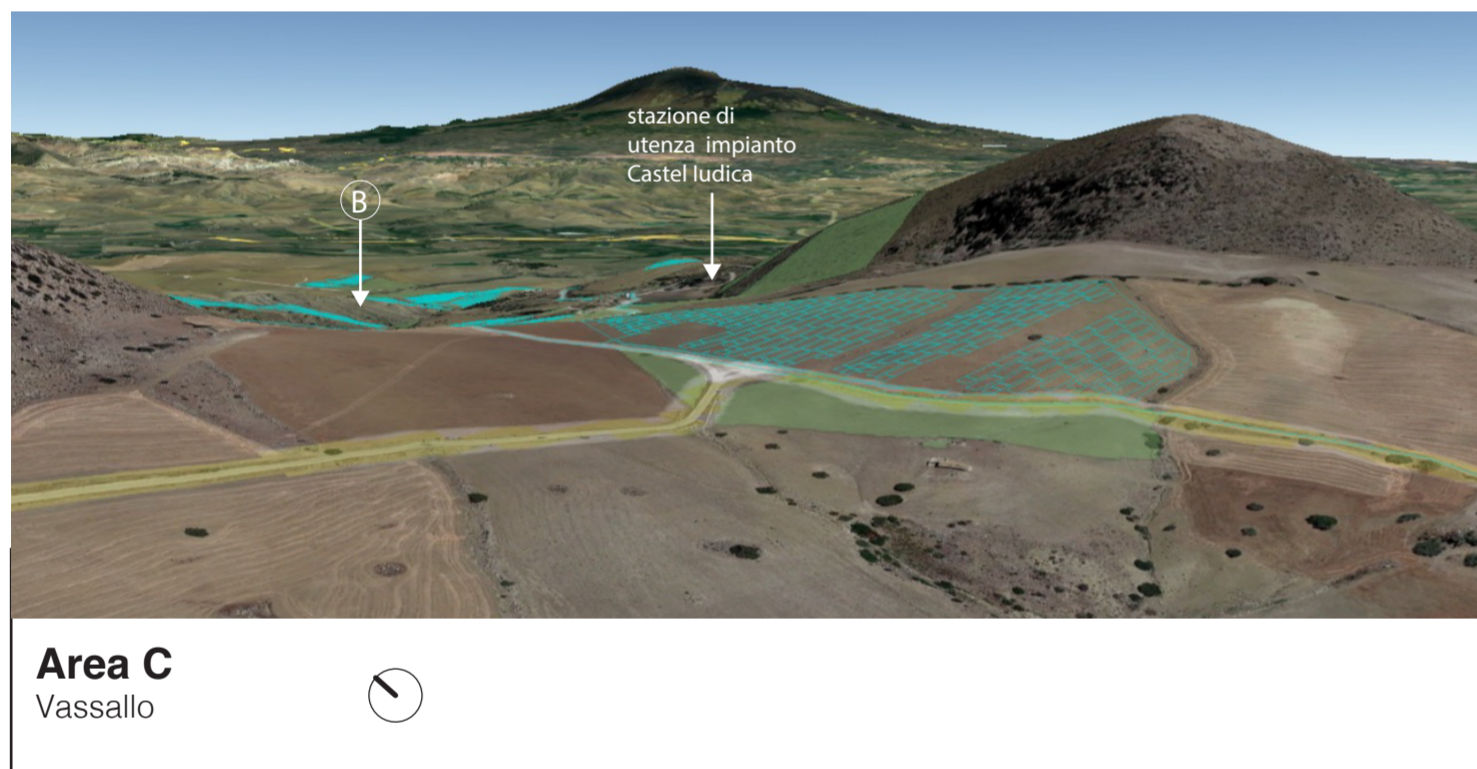
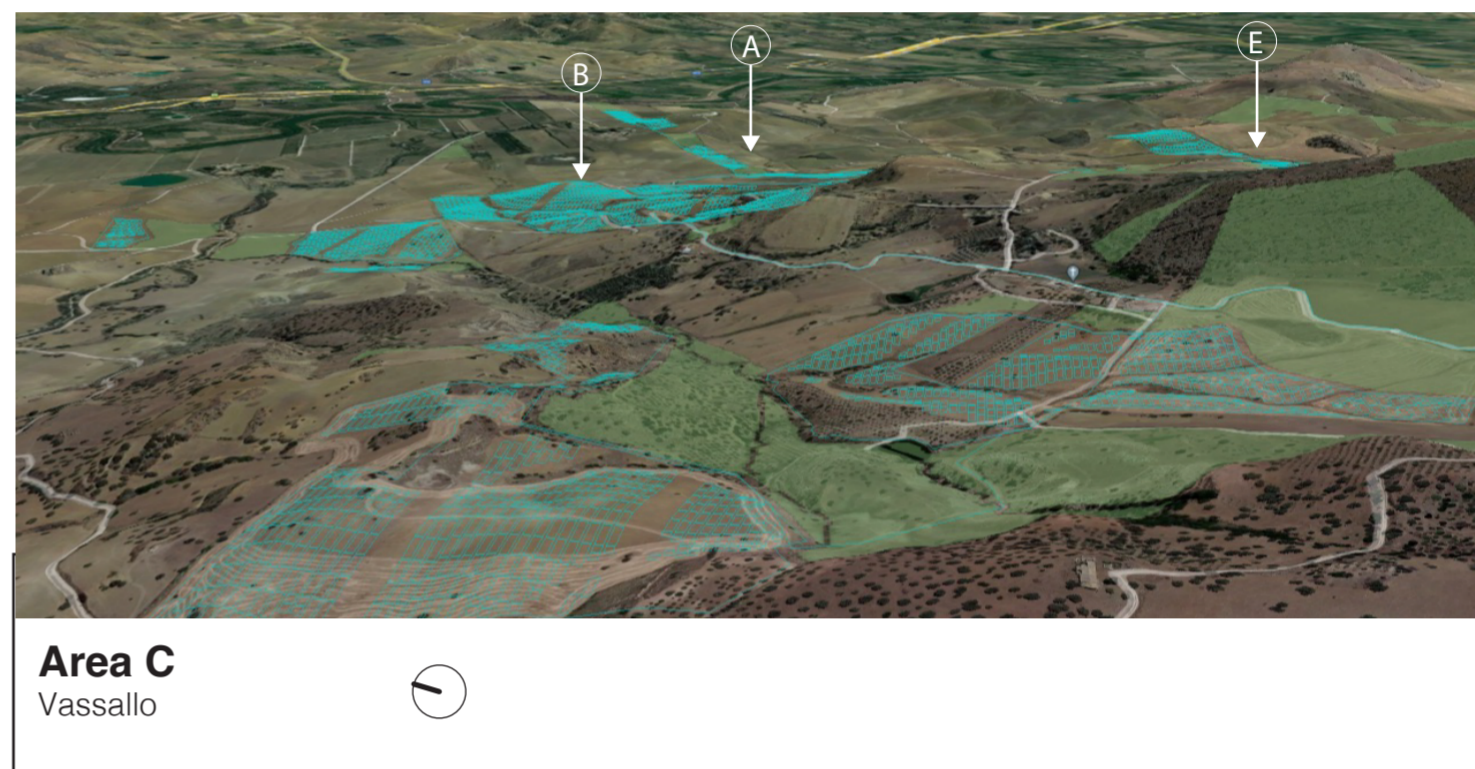
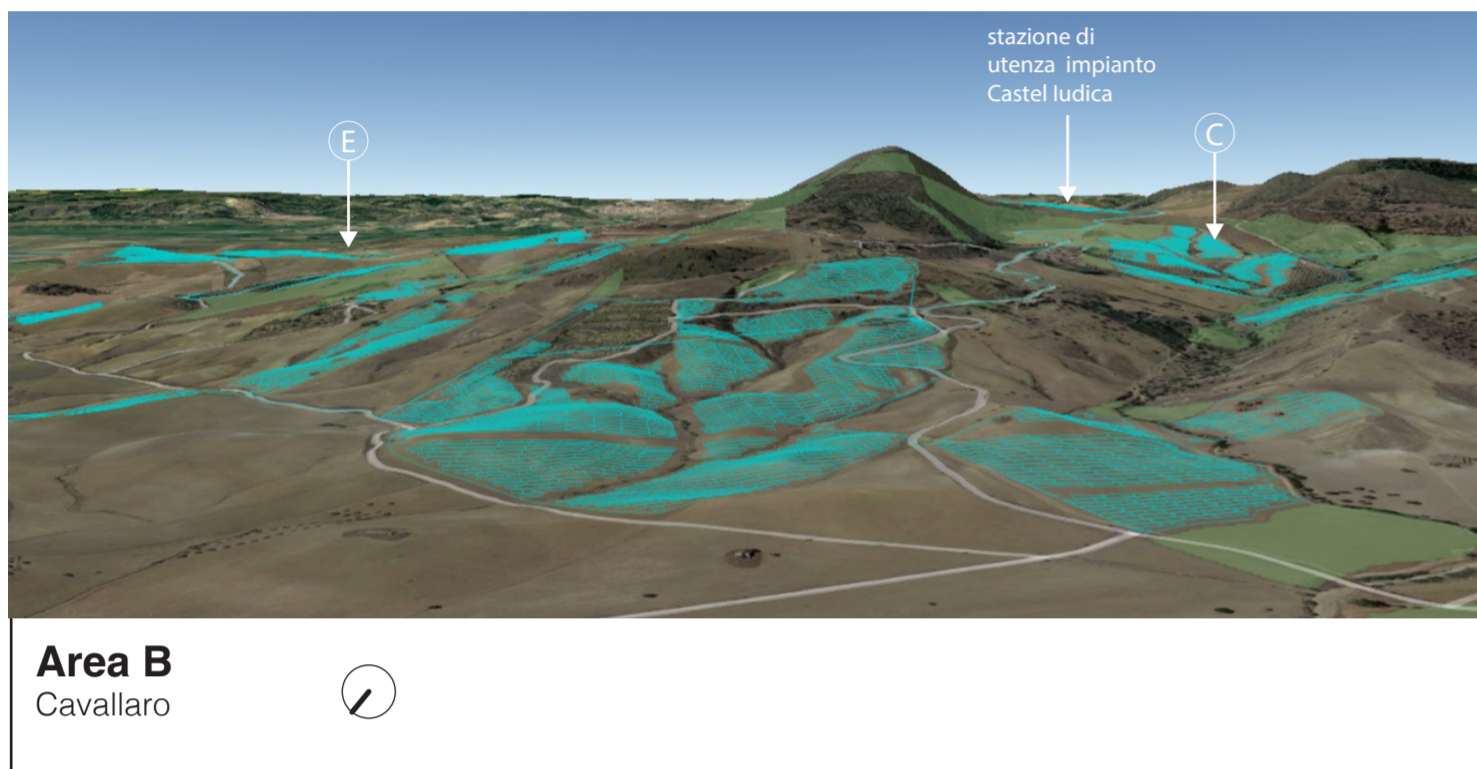
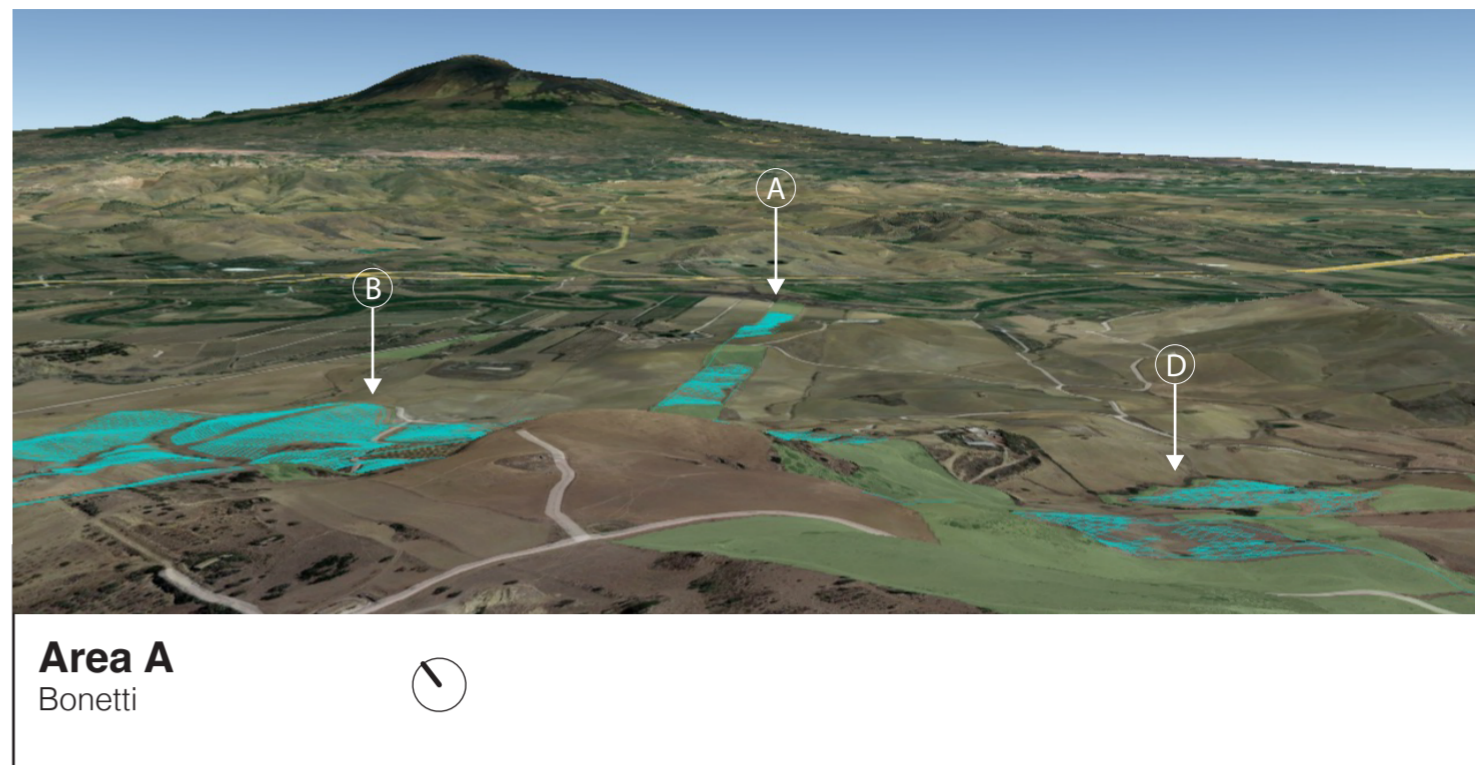
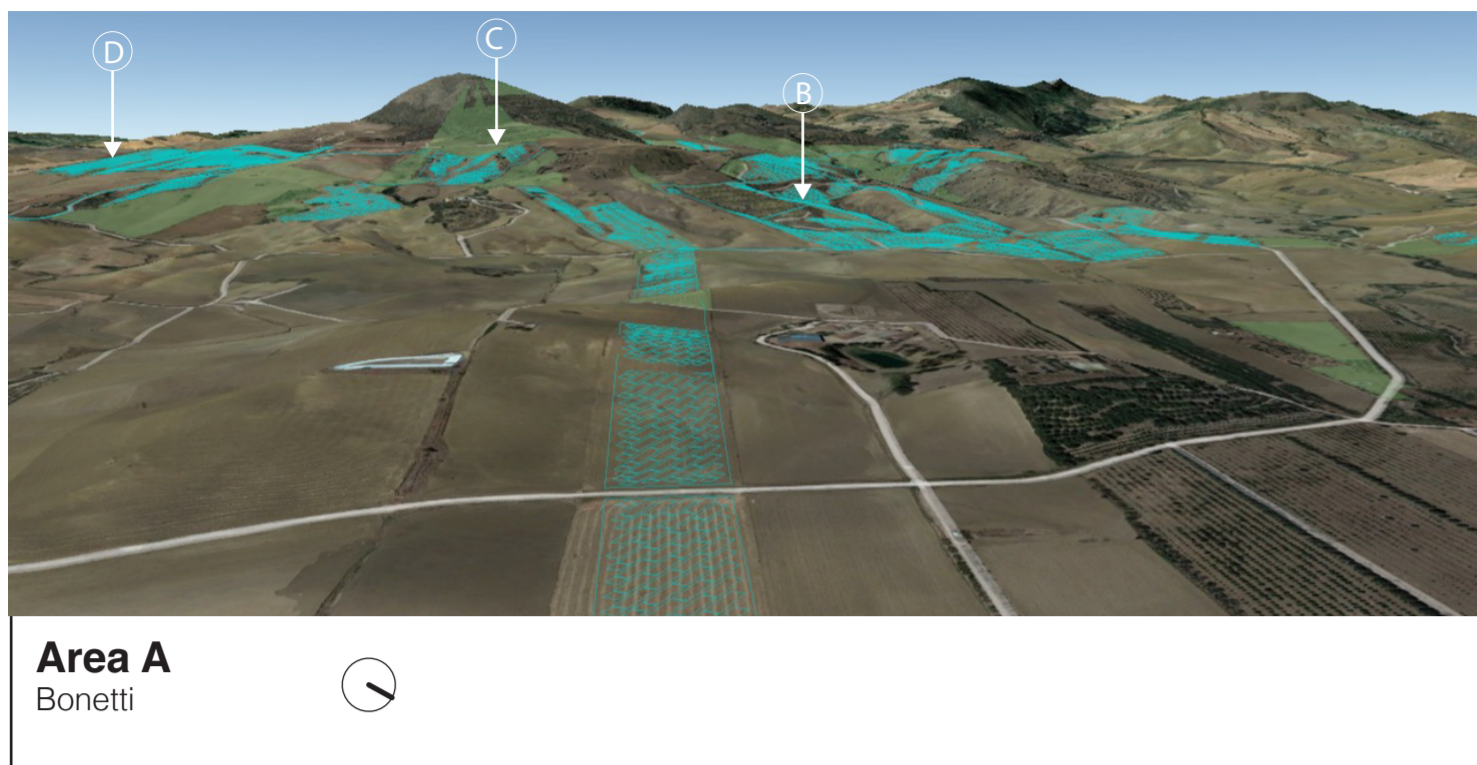
**POST**  
GARIGA MACCHIA BOSCO



**ANTE** AREA E  
FRANCHETTO  
37° 7'54.46"N  
14°46'34.42"E



**POST**  
GARIGA MACCHIA BOSCO





**ANTE** PP 225  
 37°27'48.97"N  
 14°35'39.89"E



**POST** Interferenza con  
 Sostegni Elettrodotto Aereo N  
 n. 3, 4, 5



**ANTE** PP 79  
 37°29'8.02"N  
 14°38'17.75"E



**POST** Interferenza con  
 Sostegni Elettrodotto Aereo N  
 n. 14, 15, 16, 17, 18,



**ANTE** PP 221 - San Giuseppe  
 37°28'10.64"N  
 14°38'41.94"E



**POST** Interferenza con  
 Sostegni Elettrodotto Aereo AT  
 n. 17, 18, 19, 20, 21, 22



**ANTE** PP 220 - Castel Judica  
 37°29'38.04"N  
 14°39'9.01"E



**POST** Interferenza con  
 tratti panoramici  
 Sostegni Elettrodotto Aereo AT  
 n. 23



**ANTE** PP 283  
37°29'35.86"N  
14°39'50.81"E



**POST** Interferenza con  
Sostegni Elettrodotto Aereo N  
n. 25



**ANTE** PP 280  
37°30'1.59"N  
14°40'7.37"E



**POST** Interferenza con  
Sostegni Elettrodotto Aereo N  
n. 29, 30, 31, 32



**ANTE** PP 284  
37°29'50.44"N  
14°41'22.78"E



**POST** Interferenza con  
Sostegni Elettrodotto Aereo AT  
n. 35, 36, 37, 38



**ANTE** PP 214  
37°29'22.88"N  
14°42'25.51"E



**POST** Interferenza con  
tratti panoramici  
Sostegni Elettrodotto Aereo AT  
n. 37, 38