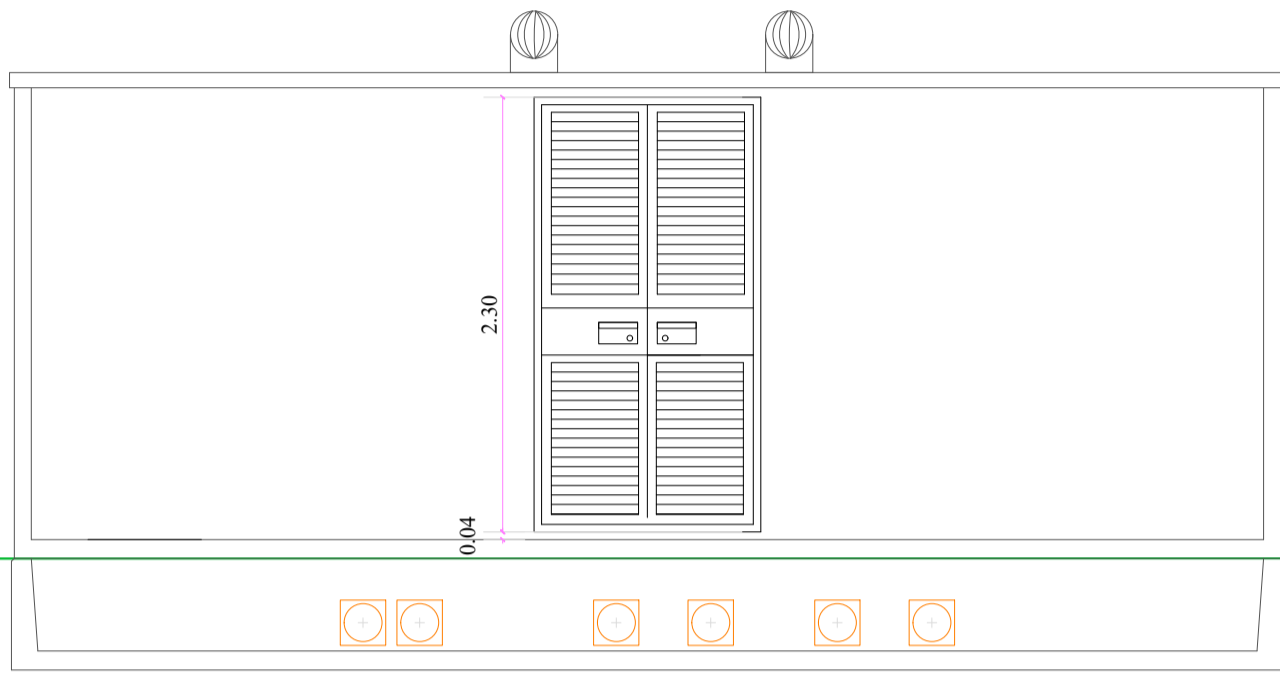
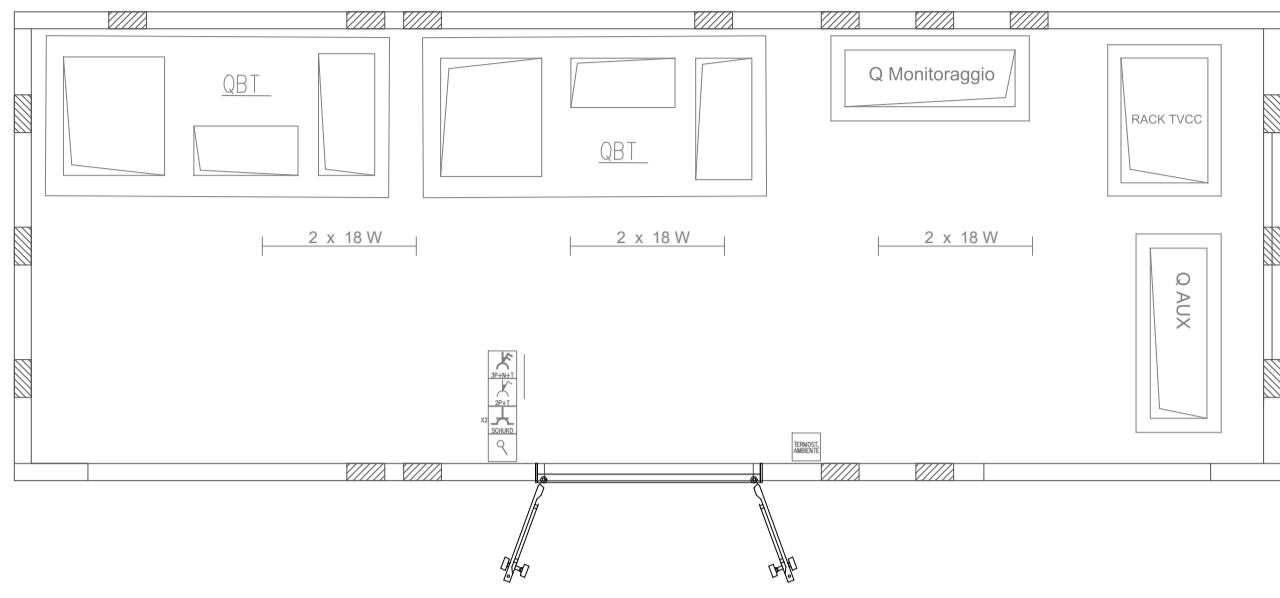


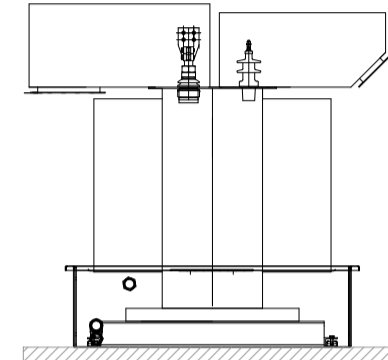
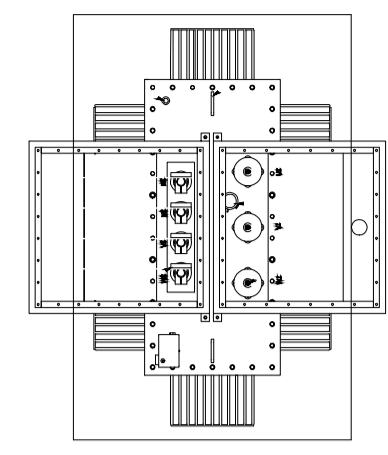
CABINA TRASFORMAZIONE

CABINA PARALLELO INVERTER

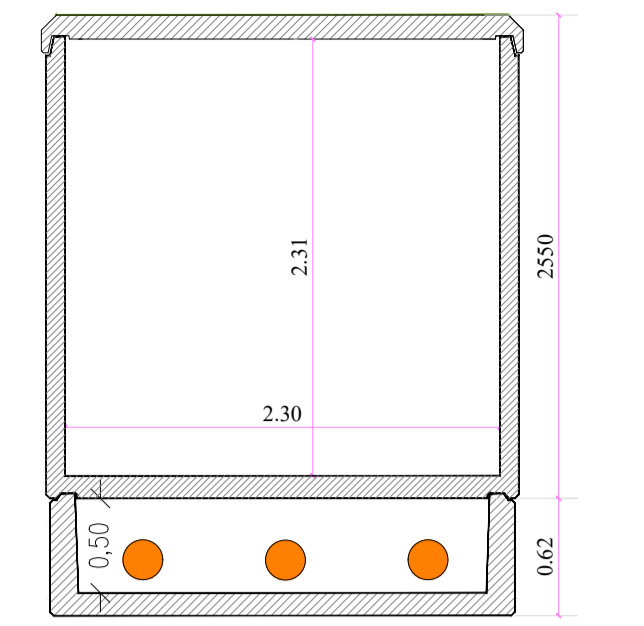
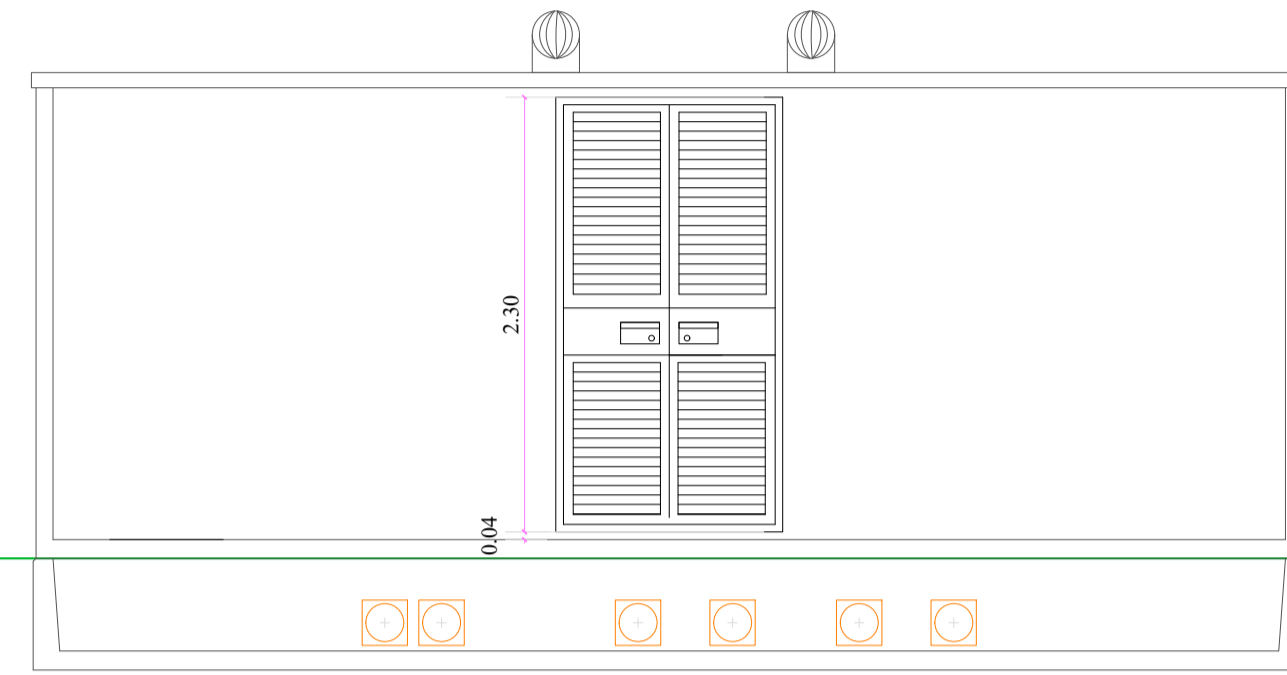
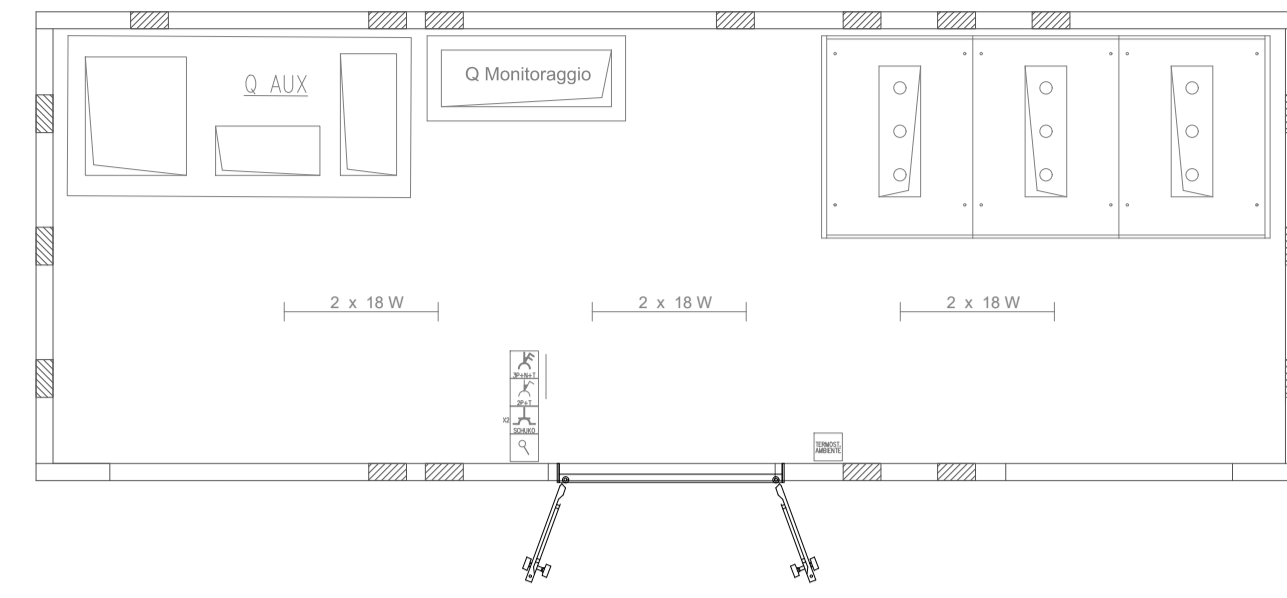


VISTA FRONTALE

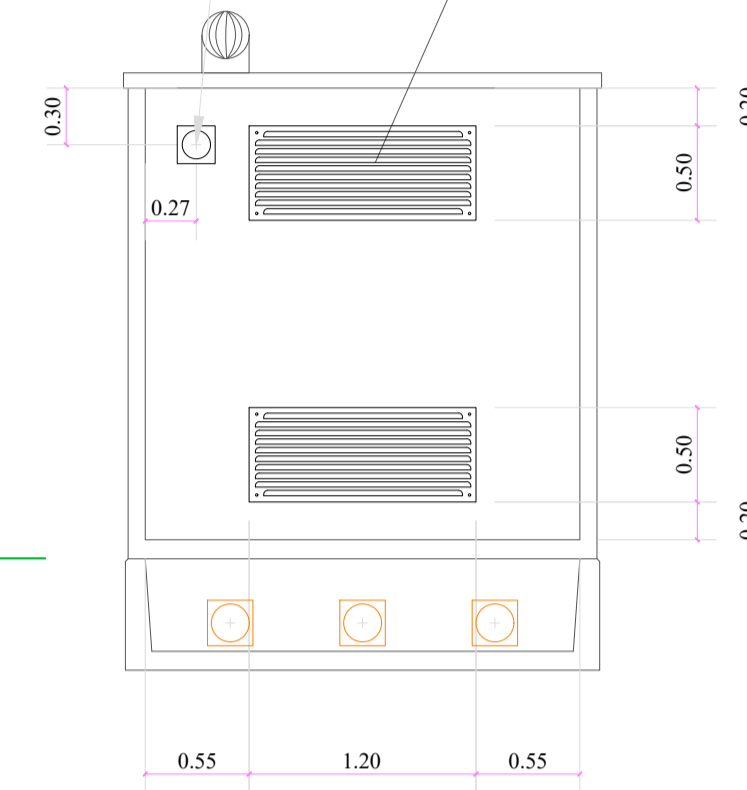
TRASFORMATORE



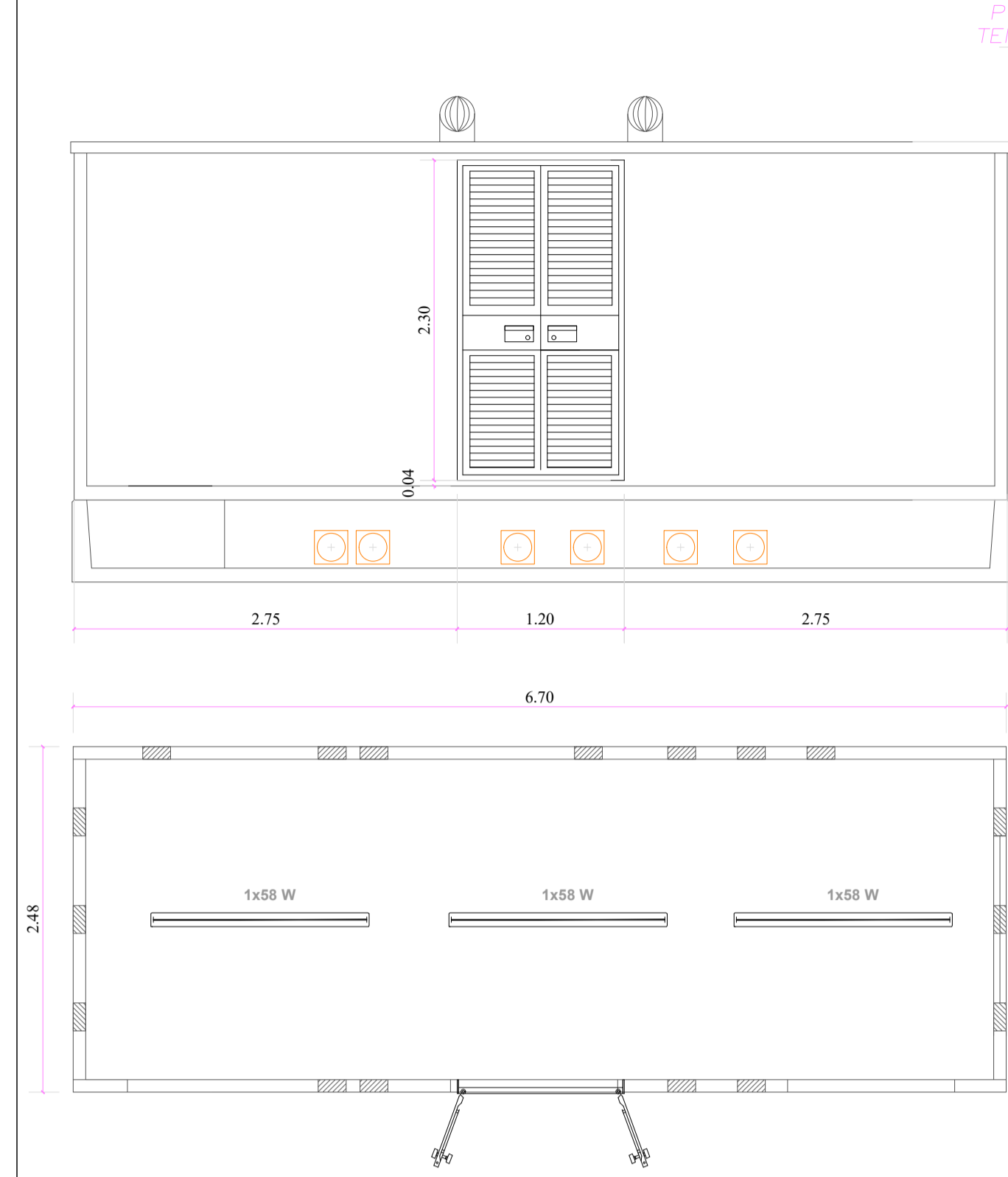
CABINA MT



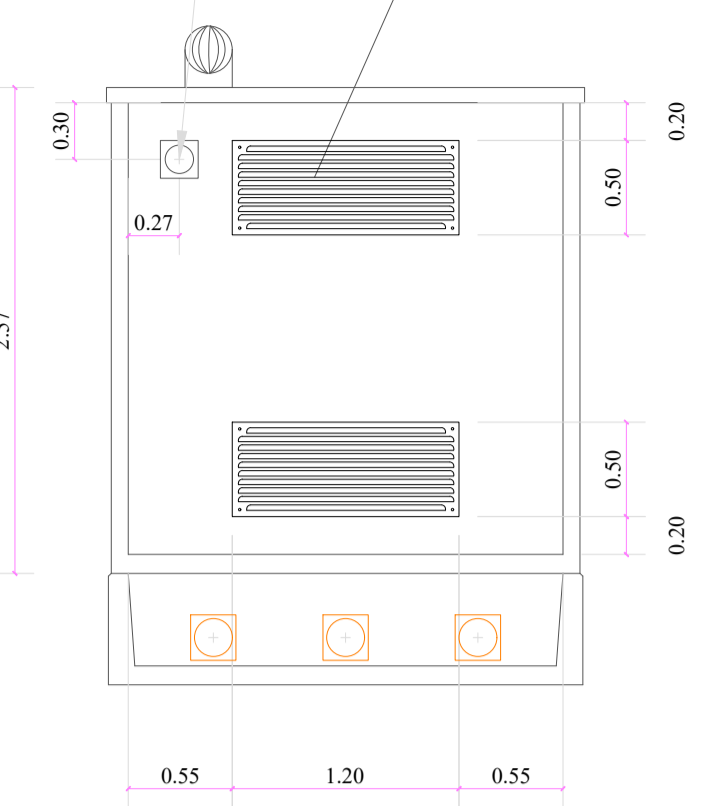
PASSANTE CAVO TEMPORANEO Ø150
N. 2 GRIGLIE VTR 120X50



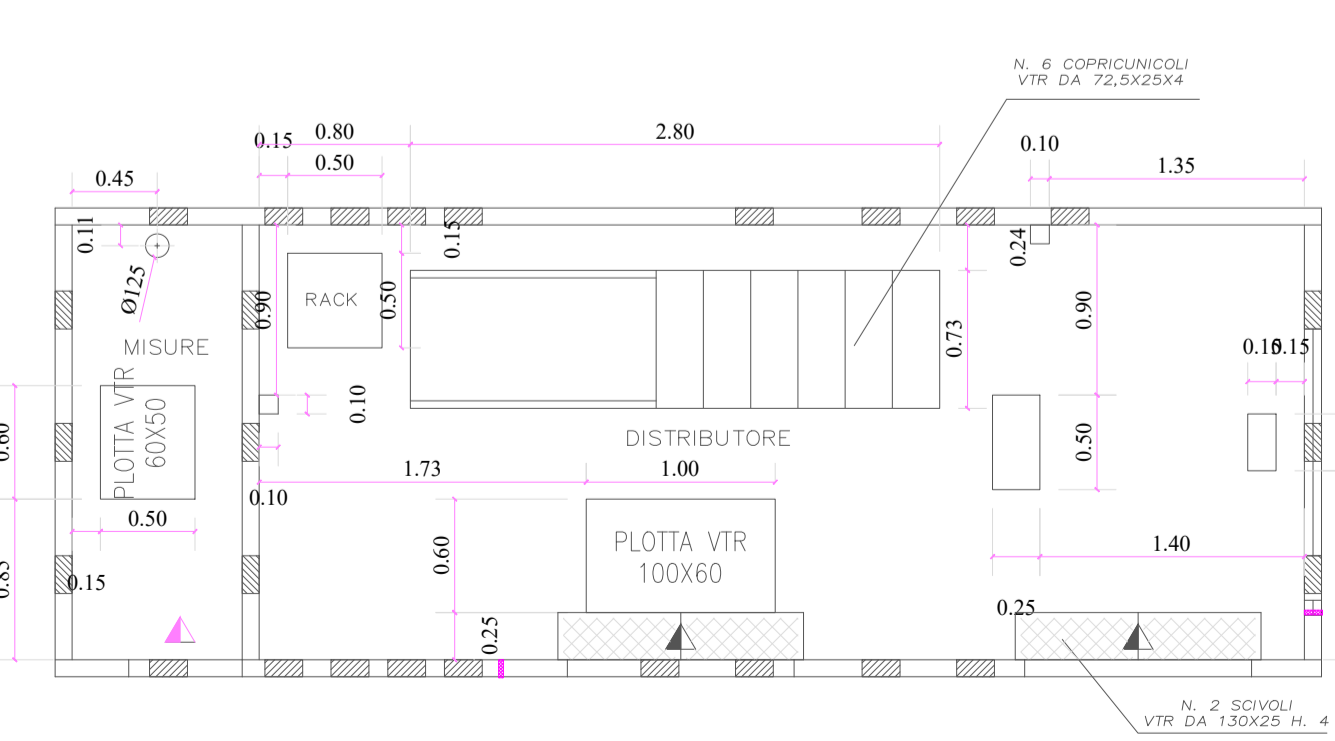
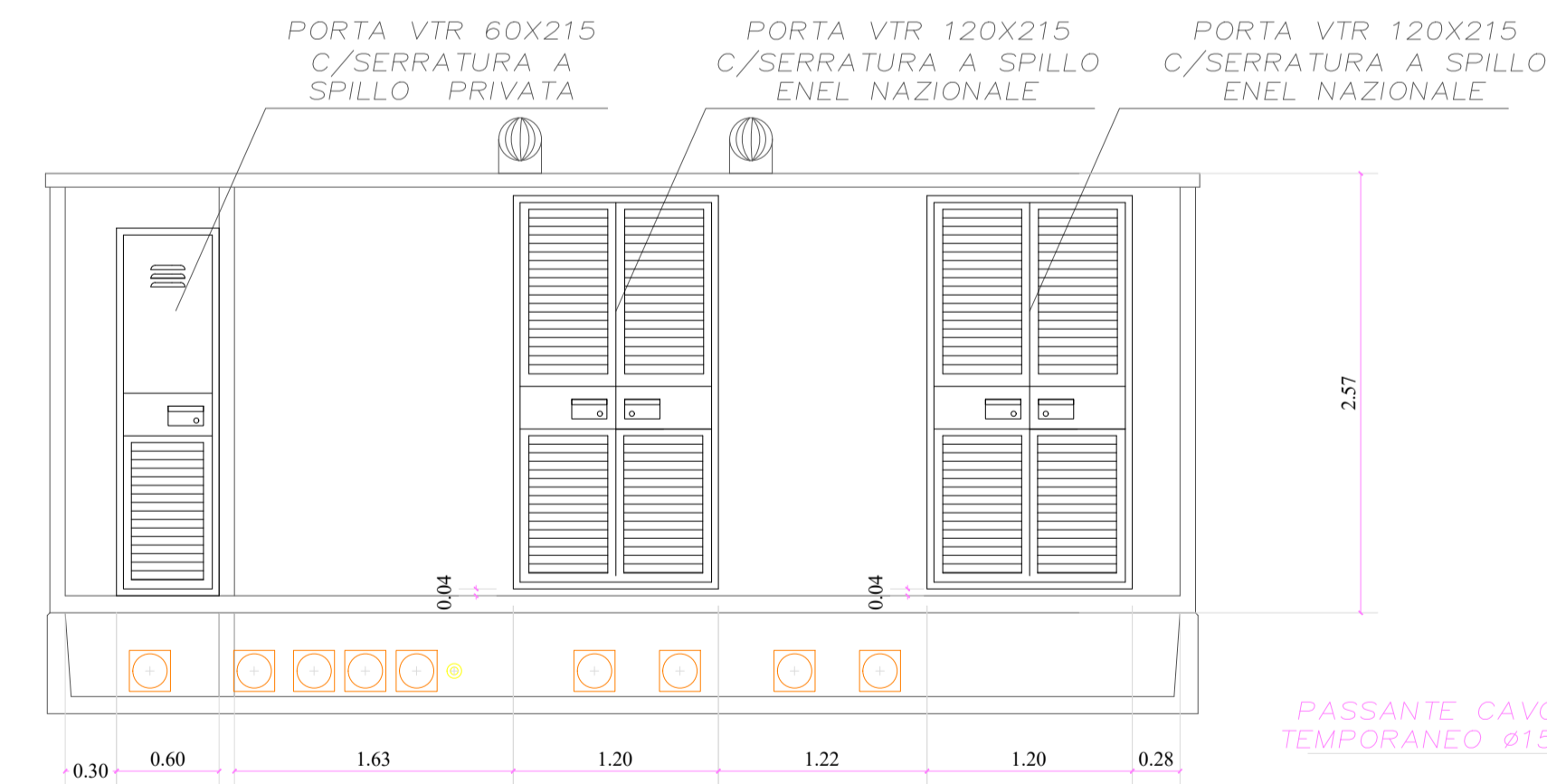
CABINA DI MONITORAGGIO



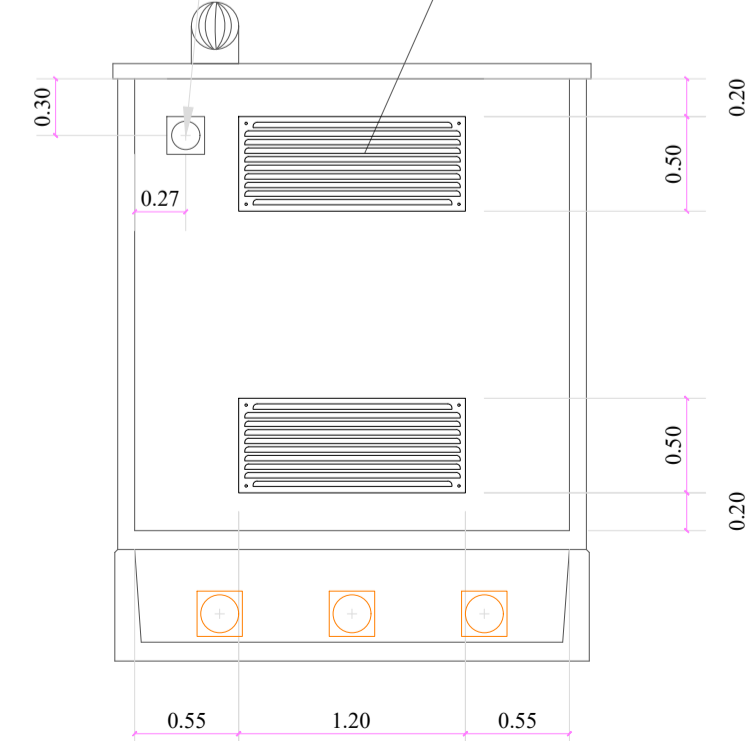
PASSANTE CAVO TEMPORANEO Ø150
N. 2 GRIGLIE VTR 120X50



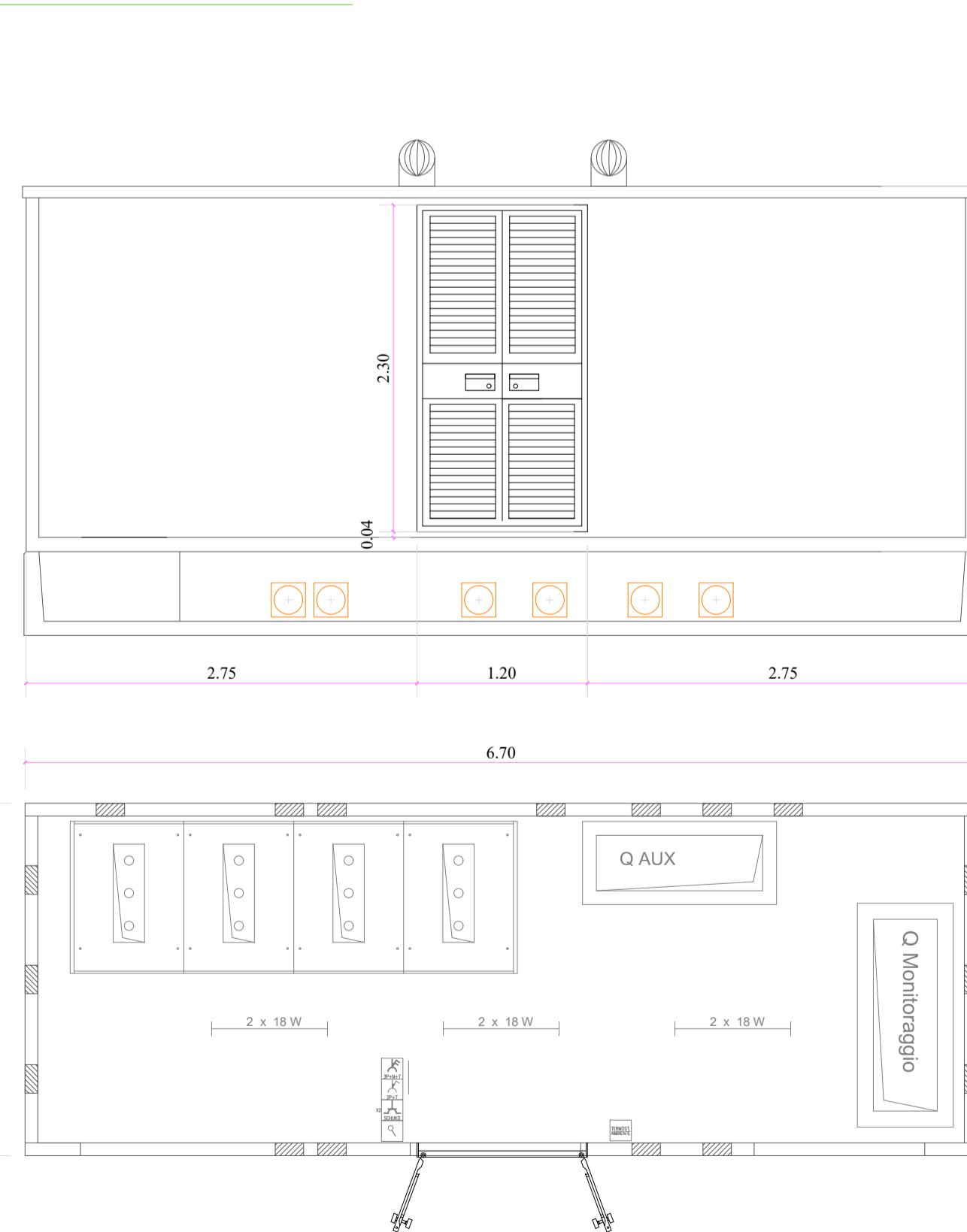
CABINA ENEL DG2092 ed.3



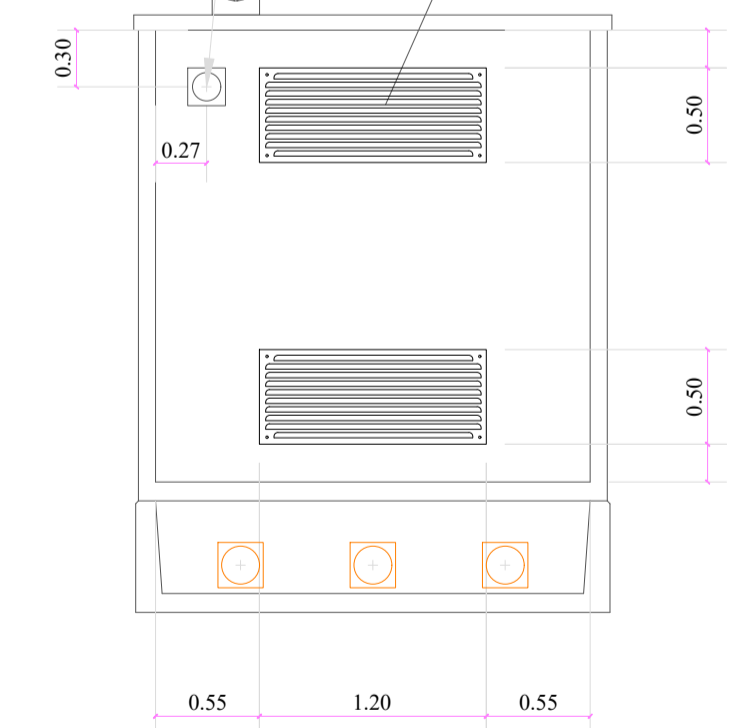
PASSANTE CAVO TEMPORANEO Ø150
N. 2 GRIGLIE VTR 120X50



CABINA UTENTE



PASSANTE CAVO TEMPORANEO Ø150
N. 2 GRIGLIE VTR 120X50





COMUNE DI MONTENERO DI BISACCIA



PROVINCIA DI
CAMPOBASSO



REGIONE MOLISE

**REALIZZAZIONE DI UN IMPIANTO SOLARE FOTOVOLTAICO
CONNESSO ALLA RETE ELETTRICA NAZIONALE DELLA POTENZA
NOMINALE DI 11.177,76 kW E POTENZA MASSIMA IN
IMMISSIONE DI 8,00 MWAC**

Denominazione Impianto:		IMPIANTO MONTENERO 1			
Ubicazione:		Comune di Montenero di Bisaccia (CB)			
ELABORATO 3.13-PDEG	PARTICOLARI COSTRUTTIVI CABINE ELETTRICHE				
Cod. Doc.: 3.13-PDEG		Scala: 1:1000			
		Renewco Engineering S.r.l. Piazza Giovanni XXIII, 5 Porto Sant'Elpidio (FM) 63821 ITALY IP: +39 e C.F.: 0255380442 info@renew-co.com www.renewco.com		PROGETTO Data: 26/11/2021 PRELIMINARE <input type="checkbox"/> DEFINITIVO <input checked="" type="checkbox"/> ESECUTIVO <input type="checkbox"/>	
Tecnici: Ing. Antonio Palestini Albo degli Ingegneri Ascoli Piceno - Nr: A1616					
Revisione	Data	Descrizione	Redatto	Approvato	Autorizzato
01	26/11/2021	Progetto Definitivo	A.P.		
02					
03					
04					

I Tecnici:
Ing. Antonio Palestini
Albo degli Ingegneri Ascoli Piceno - Nr: A1616



Il Richiedente:
MONTENERO FOTOVOLTAICO Srl
Sede Legale: Via Carabosco, 1 - P. 20123 Miano (MI)
P.Iva 1128540961

