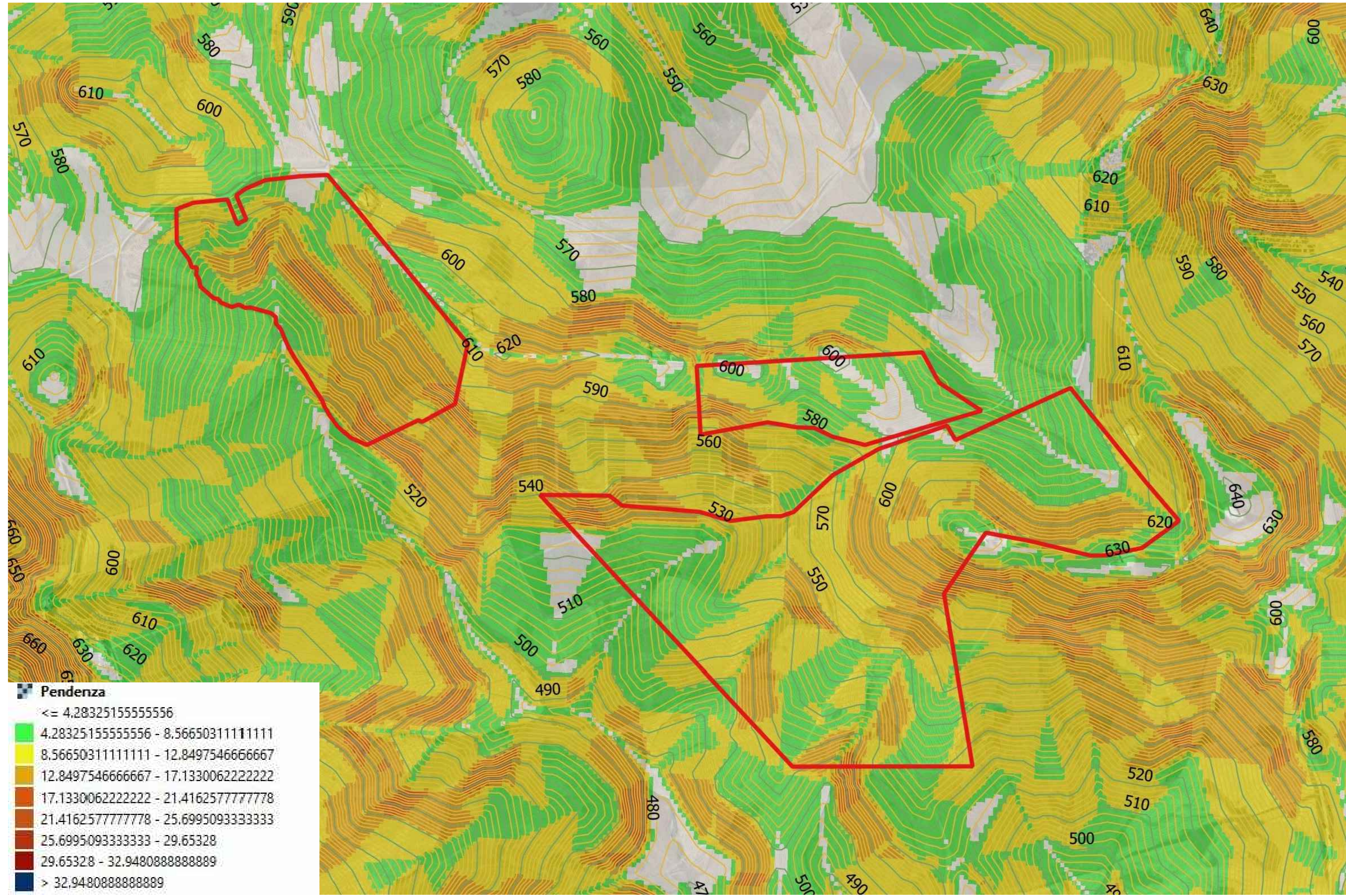
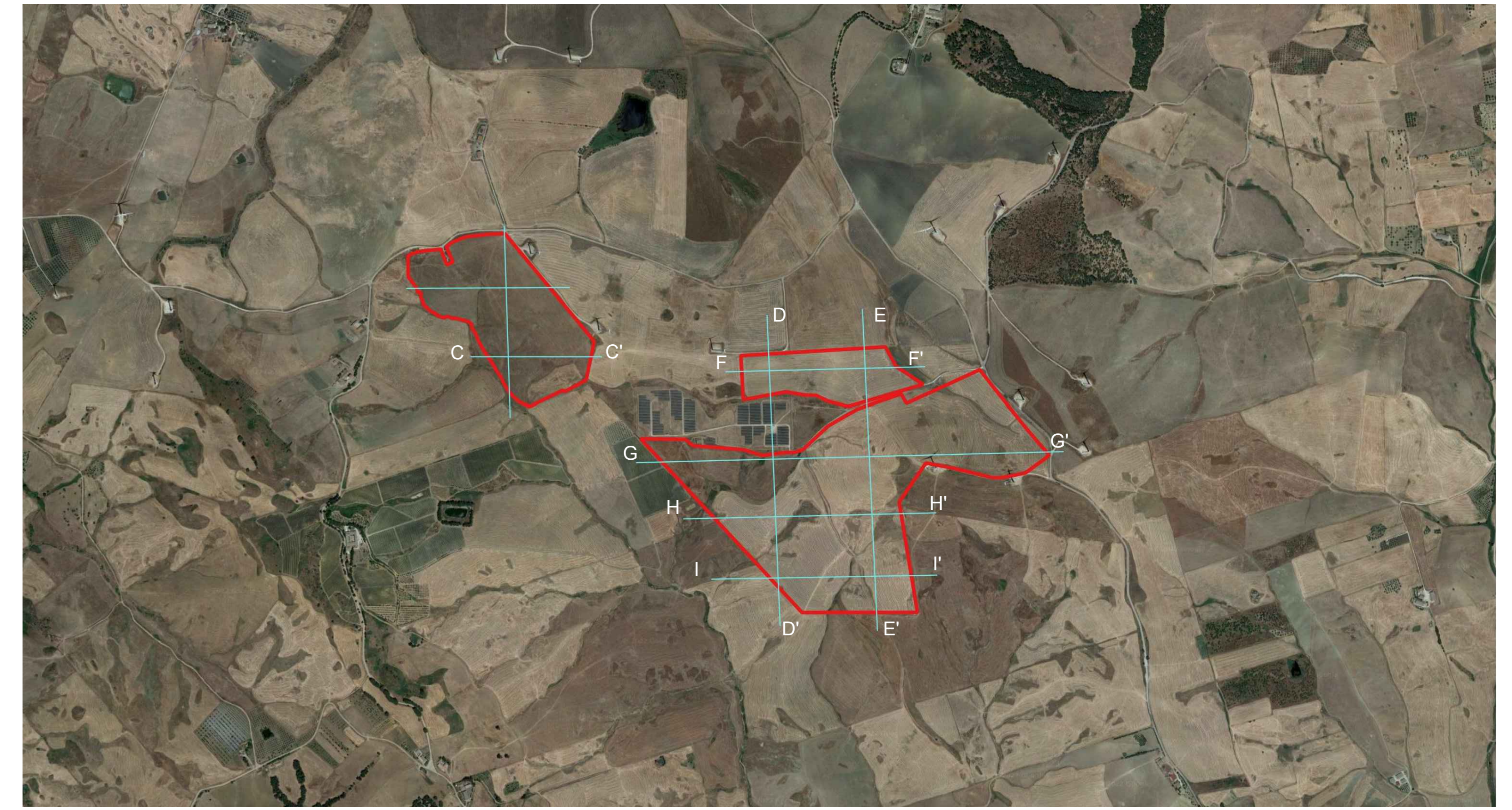


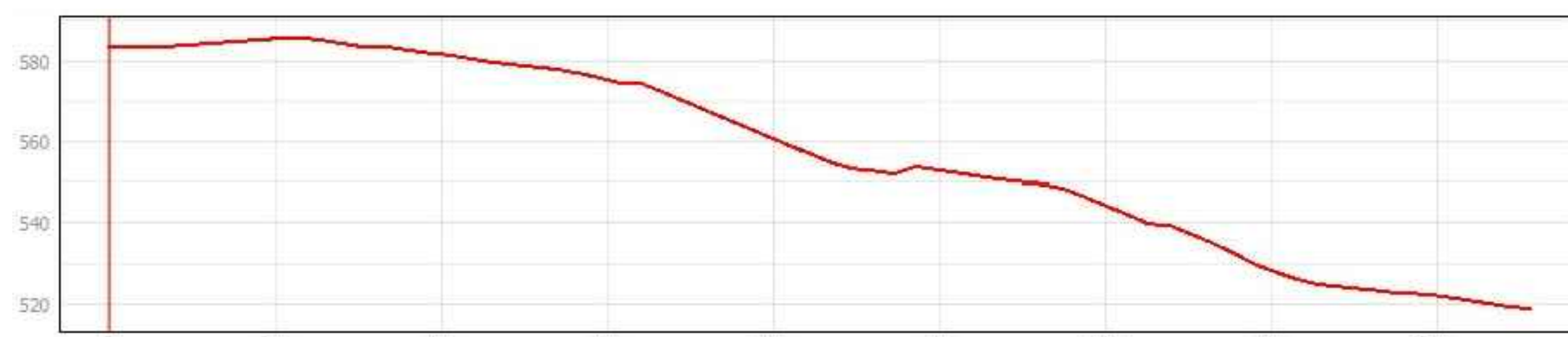
PLANIMETRIA CON OROGRAFIA TERRENO



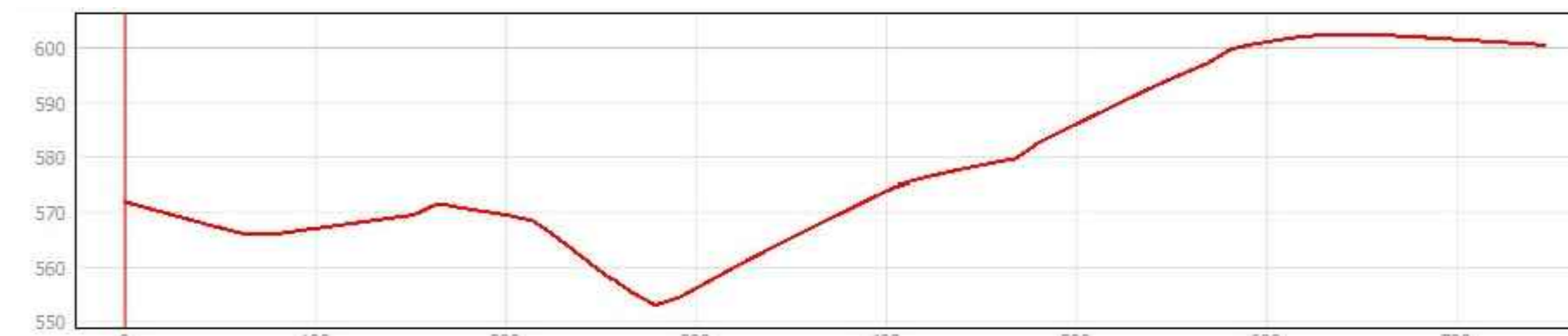
PLANIMETRIA DI RIFERIMENTO



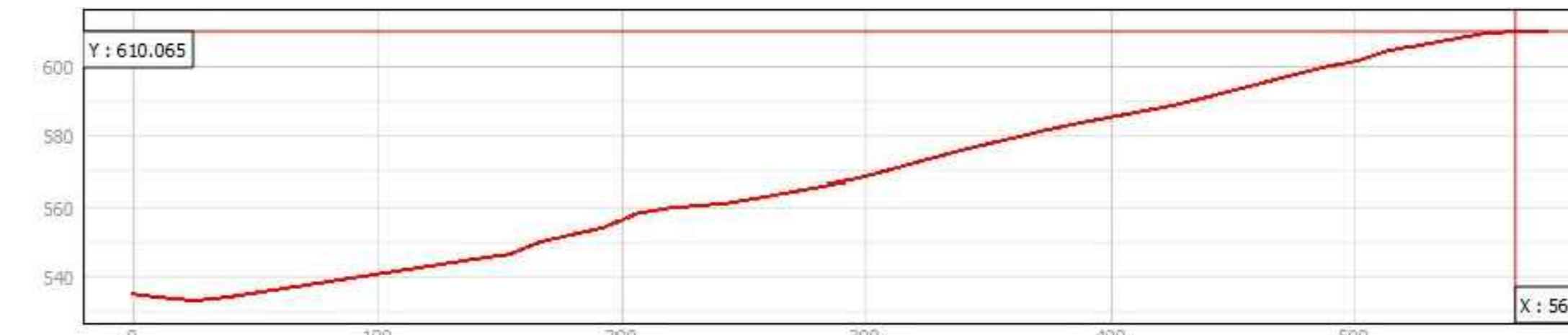
PROFILO A-A'



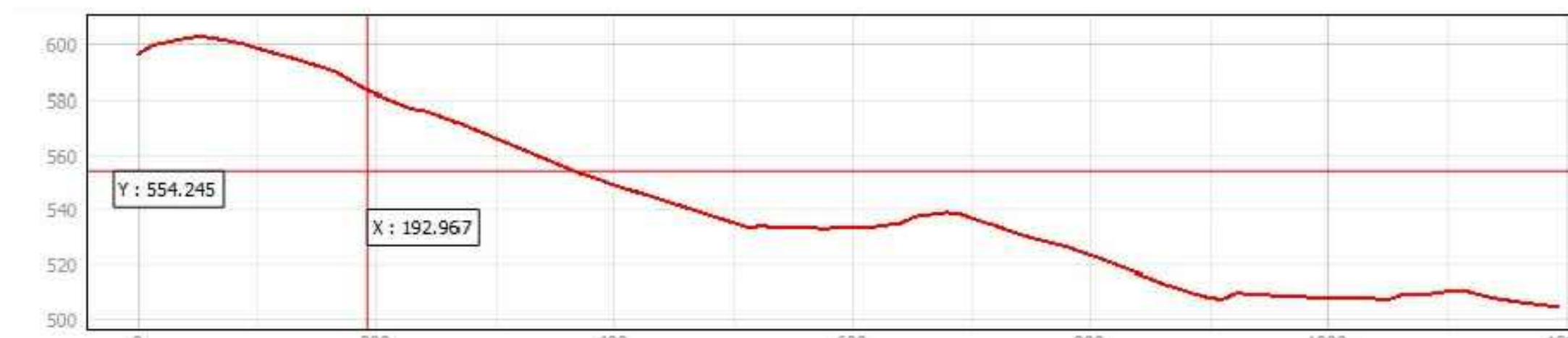
PROFILO B-B'



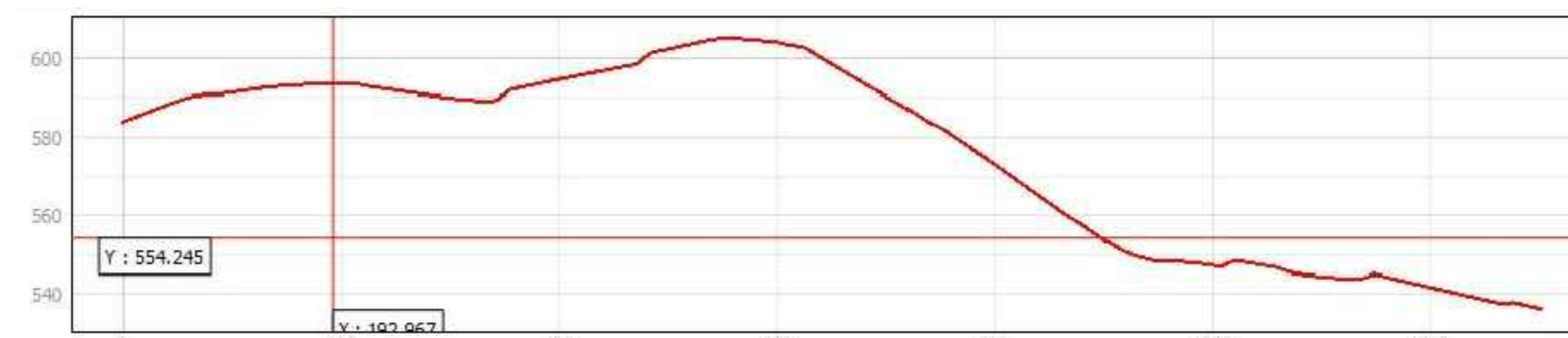
PROFILO C-C'



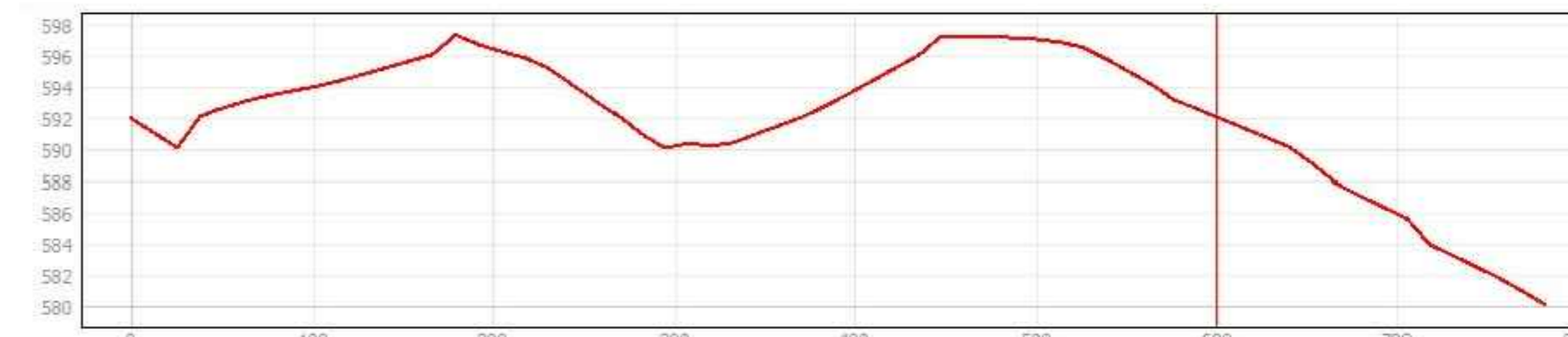
PROFILO D-D'



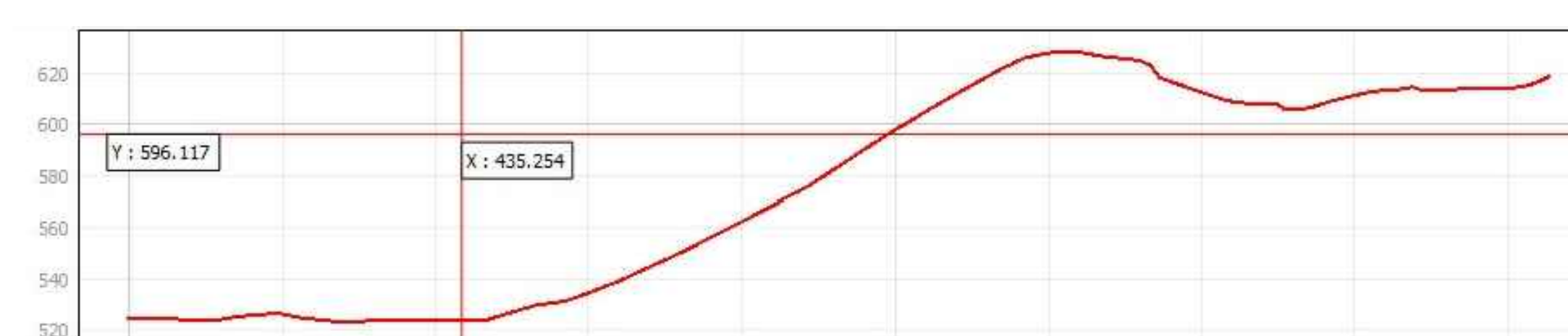
PROFILO E-E'



PROFILO F-F'



PROFILO G-G'



PROFILO H-H'



PROFILO I-I'



<p>PROGETTO PER LA REALIZZAZIONE DI UN IMPIANTO AGRIVOLTAICO NEL COMUNE DI CAMMARATA (AG) E NEL COMUNE DI VALLELUNGA PRATAMENO (CL) Potenza massima di picco: 57.462 kWp Potenza massima di immissione: 50.000 kW</p>	
<p>ELABORATI PROGETTUALI</p>	
CODICE ELABORATO	TITOLO ELABORATO
AF.Tav06	MODELLAZIONE DEL TERRENO
<p>COMMITTENTE ILOS IRE Montoni Vecchio Srl IRE Montoni Vecchio S.p.A. Piazza di Sant'Anastasia, 00186 Roma P.IVA n. 02126310008</p>	
<p>PROGETTAZIONE 2A SINERGY 2A SINERGY S.p.A. S.R.L. Via Giuseppe Verdi 4 00186 Roma Tel. 0668 20320 P.IVA 0208810704</p>	
ENTRATA	ENTRATA
<p>PROGETTO: Ing. Enrico Giubetta</p>	<p>ENTRATA</p>
DATA: APRILE 2022	SCALA: FORMATO CARTA: A4