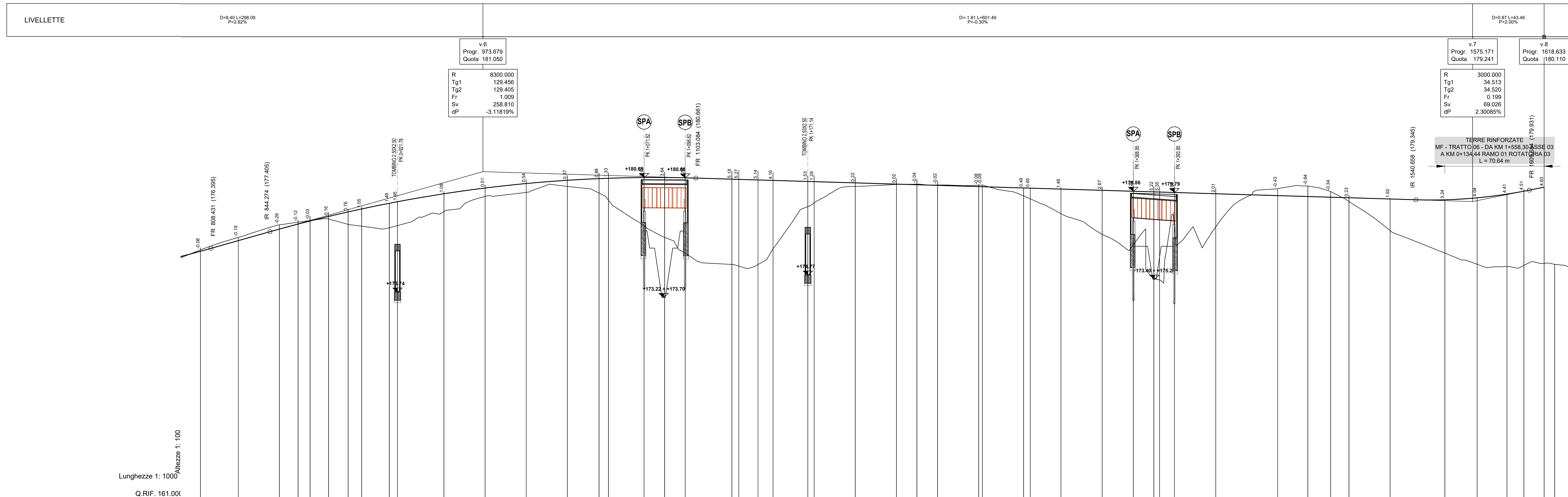


N.B. : Nelle località urbane è prevista la posa dello strato d'usura con argilla espansa.

LEGGENDA

- PROFILO DI PROGETTO
- PROFILO ORIGINALE



No. SEZIONI	PROGRESSIVE TERRENO	PARZIALI TERRENO	QUOTE TERRENO	QUOTE PROGETTO	BANCHINA SX	BANCHINA DX	ETTOMETRICHE	AND. CIGLI	AND. PLAN.	DIAGRAMMA DI VELOCITA'	DIAGRAMMA DELL'ARRETRAMENTO DEGLI OSTACOLI	Aoa_esx (m)	Aoa_edx (m)
12	602.02-A+0.40	12	-175.98	-175.22	-175.43	-175.22	176.30	22.98	4.4%	100	1.00	0.0	0.0
	825.00-A+3.41	25.00	-176.65	-177.07	-176.86	-177.06	177.06	11.34	4.4%	100	1.00	0.0	0.0
	850.00-A+3.42	25.00	-177.34	-177.77	-177.56	-177.82	177.82	11.34	4.4%	100	1.00	0.0	0.0
	861.34-A+3.42	19.27	-177.86	-178.11	-177.87	-177.99	177.99	11.34	4.4%	100	1.00	0.0	0.0
	866.66-A+3.43	21.62	-177.86	-178.33	-178.06	-178.08	178.08	11.20	4.4%	100	1.00	0.0	0.0
	879.85-A+3.43	12.50	-178.17	-178.58	-178.33	-178.17	178.17	11.94	4.4%	100	1.00	0.0	0.0
	891.79-A+3.43	12.50	-178.49	-178.79	-178.61	-177.85	177.85	16.81	4.4%	100	1.00	0.0	0.0
	900.00-A+3.44	28.22	-178.71	-178.90	-178.79	-177.74	177.74	25.00	4.4%	100	1.00	0.0	0.0
	916.81-A+3.45	25.00	-179.15	-179.33	-179.13	-177.64	177.64	25.00	4.4%	100	1.00	0.0	0.0
	921.19-A+3.45	25.00	-179.25	-179.25	-179.25	-177.79	177.79	25.00	4.4%	100	1.00	0.0	0.0
	950.00-A+3.46	25.00	-179.86	-179.57	-179.71	-178.63	178.63	25.00	4.4%	100	1.00	0.0	0.0
	975.00-A+3.47	25.00	-180.25	-179.84	-180.06	-178.55	178.55	25.00	4.4%	100	1.00	0.0	0.0
	1000.00-A+3.48	25.00	-180.57	-179.89	-180.33	-178.79	178.79	25.00	4.4%	100	1.00	0.0	0.0
	1025.00-A+3.49	19.27	-180.82	-180.06	-180.53	-180.16	180.16	19.27	4.4%	100	1.00	0.0	0.0
	1046.27-A+3.50	21.62	-180.86	-180.05	-180.63	-179.75	179.75	21.62	4.4%	100	1.00	0.0	0.0
	1060.00-A+3.51	12.50	-180.98	-180.26	-180.65	-179.32	179.32	12.50	4.4%	100	1.00	0.0	0.0
	1071.62-A+3.52	12.50	-181.03	-180.09	-180.70	-177.78	177.78	12.50	4.4%	100	1.00	0.0	0.0
	1084.12-A+3.53	28.38	-181.03	-180.08	-180.70	-177.09	177.09	28.38	4.4%	100	1.00	0.0	0.0
	1096.62-A+3.54	11.66	-181.01	-180.06	-180.69	-176.10	176.10	11.66	4.4%	100	1.00	0.0	0.0
	1125.00-A+3.55	11.66	-181.10	-179.98	-180.60	-175.41	175.41	11.66	4.4%	100	1.00	0.0	0.0
	1139.29-A+3.56	9.14	-181.12	-179.96	-180.58	-175.32	175.32	9.14	4.4%	100	1.00	0.0	0.0
	1160.89-A+3.56	21.14	-181.09	-179.83	-180.55	-175.41	175.41	21.14	4.4%	100	1.00	0.0	0.0
	1180.00-A+3.57	25.00	-180.98	-179.90	-180.52	-176.36	176.36	25.00	4.4%	100	1.00	0.0	0.0
	1200.00-A+3.58	25.00	-180.79	-179.82	-180.46	-176.83	176.83	25.00	4.4%	100	1.00	0.0	0.0
	1220.00-A+3.58	25.00	-180.78	-179.80	-180.44	-176.16	176.16	25.00	4.4%	100	1.00	0.0	0.0
	1250.00-A+3.59	25.00	-180.70	-179.73	-180.37	-180.15	180.15	25.00	4.4%	100	1.00	0.0	0.0
	1265.00-A+3.60	12.44	-180.63	-179.73	-180.29	-180.28	180.28	12.44	4.4%	100	1.00	0.0	0.0
	1274.44-A+3.61	12.56	-180.59	-179.74	-180.26	-180.29	180.29	12.56	4.4%	100	1.00	0.0	0.0
	1280.00-A+3.62	25.00	-180.49	-179.85	-180.22	-180.24	180.24	25.00	4.4%	100	1.00	0.0	0.0
	1300.00-A+3.63	25.00	-180.26	-180.10	-180.14	-180.22	180.22	25.00	4.4%	100	1.00	0.0	0.0
	1320.29-A+3.64	18.69	-180.06	-180.05	-180.06	-178.98	178.98	18.69	4.4%	100	1.00	0.0	0.0
	1330.31-A+3.64	25.00	-180.03	-180.07	-180.05	-178.40	178.40	25.00	4.4%	100	1.00	0.0	0.0
	1350.00-A+3.65	18.95	-179.85	-180.10	-179.89	-178.90	178.90	18.95	4.4%	100	1.00	0.0	0.0
	1380.00-A+3.66	18.95	-179.57	-180.13	-179.92	-177.25	177.25	18.95	4.4%	100	1.00	0.0	0.0
	1398.95-A+3.66	12.50	-179.32	-180.14	-179.86	-176.81	176.81	12.50	4.4%	100	1.00	0.0	0.0
	1381.45-A+3.67	0.02	-179.17	-180.16	-179.82	-174.60	174.60	0.02	4.4%	100	1.00	0.0	0.0
	1384.93-A+3.66	25.11	-179.16	-180.15	-179.81	-174.47	174.47	25.11	4.4%	100	1.00	0.0	0.0
	1393.88-A+3.69	37.60	-179.13	-180.12	-179.79	-177.80	177.80	37.60	4.4%	100	1.00	0.0	0.0
	1410.00-A+3.70	18.34	-179.09	-180.04	-179.71	-177.70	177.70	18.34	4.4%	100	1.00	0.0	0.0
	1456.66-A+3.71	13.86	-179.11	-179.93	-179.60	-180.02	180.02	13.86	4.4%	100	1.00	0.0	0.0
	1475.00-A+3.72	11.14	-179.24	-179.80	-179.54	-180.18	180.18	11.14	4.4%	100	1.00	0.0	0.0
	1488.84-A+3.72	25.00	-179.30	-179.70	-179.50	-179.84	179.84	25.00	4.4%	100	1.00	0.0	0.0
	1500.00-A+3.73	33.30	-179.31	-179.62	-179.47	-179.24	179.24	33.30	4.4%	100	1.00	0.0	0.0
	1525.00-A+3.74	18.11	-179.27	-179.43	-179.39	-177.47	177.47	18.11	4.4%	100	1.00	0.0	0.0
	1558.30-A+3.75	19.62	-179.22	-179.32	-179.34	-176.10	176.10	19.62	4.4%	100	1.00	0.0	0.0
	1577.52-A+3.76	18.11	-179.35	-179.42	-179.46	-175.43	175.43	18.11	4.4%	100	1.00	0.0	0.0
	1586.04-A+3.77	12.31	-179.59	-179.73	-179.69	-175.28	175.28	12.31	4.4%	100	1.00	0.0	0.0
	1608.33-A+3.78	13.95	-179.75	-179.86	-179.87	-175.36	175.36	13.95	4.4%	100	1.00	0.0	0.0
	1618.63-A+3.79	175.14	-180.11	-175.48	-175.48	-175.43	175.43	175.14	4.4%	100	1.00	0.0	0.0
	1628.00-A+3.80	175.14	-180.39	-176.49	-176.49	-175.14	175.14	175.14	4.4%	100	1.00	0.0	0.0

sanas ANAS S.p.A.
GRUPPO FS ITALIANE Direzione Progettazione e Realizzazione Lavori

S.S.45 DELLA VAL DI TREBBIA
AMMODERNAMENTO DELLA STRADA STATALE N. 45 DELLA VAL TREBBIA NEL TRATTO CERNUSCA-RIVERGARO

PROGETTO DEFINITIVO

PROGETTAZIONE: ANAS DPPI	SUPPORTO ALLA PROGETTAZIONE:
PROGETTISTA: Ing. Antonio SCALAMANDRO Direttore Ing. d'Intervento n. 180	STUDIO CORONA
IL GEOLOGO: geo. Marco MARTINO Direttore del Lavoro n. 437	UNING
IL RESPONSABILE DEL SA: Ing. Luca PIGNAN Direttore del Lavoro n. A-3788	GA&M
IL COORDINATORE PER LA SICUREZZA IN FASE DI PROGETTAZIONE: geo. E. PINELLA	SETAC
VISTO IL RESPONSABILE DEL PROCEDIMENTO: Ing. Anna Maria NCSAR	ARKE
PROTOCOLLO	DATA
ECOPLAN	EG
DOTT. GEOL. DANILIO GALLO	ING. RENATO DEL PRETE

D01021 **D - PROGETTO STRADALE**
D01 - PLANIMETRIE E PROFILI DI RAFFRONTO
PROFILO LONGITUDINALE DI RAFFRONTO ASSE PRINCIPALE 03
Tav 2 di 2

CODICE PROGETTO	NOME FILE	REVISIONE	SCALA:
PROGETTO	DO1021 - PO0PS00TRAPP24_A.dwg		
BO0067	D 1801	A	1:1000/100
CODICE ELAB.	PO0PS00TRAPP24		

REV.	DESCRIZIONE	DATA	REDAITTO	VERIFICATO	APPROVATO
C					
B					
A	EMISSIONE A SEGUITO DI RICHIESTA INTEGRAZIONE DEL MINISTERO	Novembre 2022			