

LIVELLETTA

D=3,30 L=538,47 P=0,63%

D=4,25 L=259,64 P=1,6%

D=1,06 L=53,23 P=2,00%

N.B. : Nelle località urbane è prevista la posa dello strato d'usura con argilla espansa.

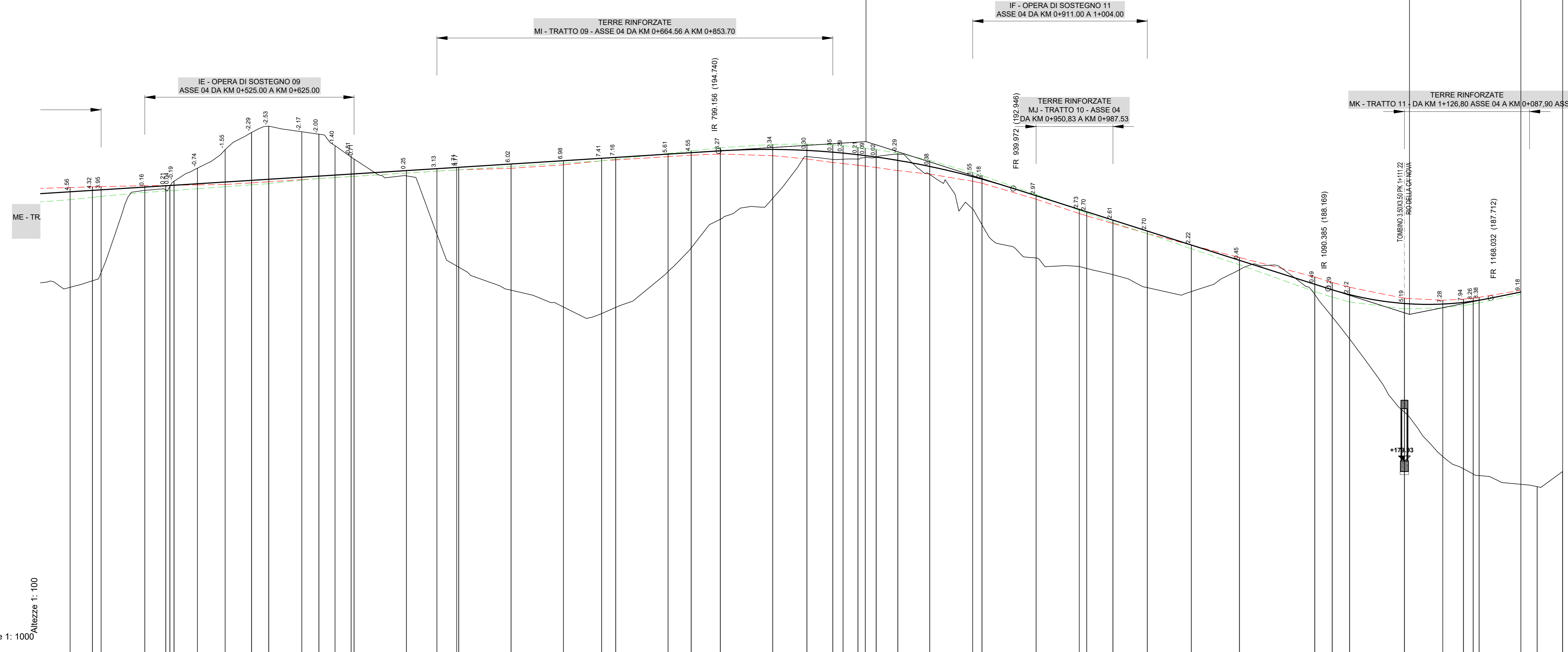
v.5
 Progr. 869.564
 Quota 195.183

R 3700.000
 Tg1 70.409
 Tg2 70.443
 Fr 0.670
 Sv 140.815
 dP -3.80582%

v.6
 Progr. 1129.209
 Quota 186.935

R 1500.000
 Tg1 38.843
 Tg2 38.832
 Fr 0.502
 Sv 71.548
 dP 5.17651%

v.7
 Progr. 1182.441
 Quota 188.000



No. SEZIONI	PROGRESSIVE TERRENO	PARZIALI TERRENO	QUOTE TERRENO	QUOTE PROGETTO	BANCHINA SX	BANCHINA DX	ETOMETRICHE	AND. CIGLI	AND. PLAN.	DIAGRAMMA DI VELOCITA'	DIAGRAMMA DELL'ARRETRAMENTO DEGLI OSTACOLI
14.32	106.66	20.88	11.18	13.27	12.59	15.79	15.79	15.79	15.79	71	
10.66	188.23	10.66	10.66	10.66	10.66	10.66	10.66	10.66	10.66	71	
10.66	188.84	10.66	10.66	10.66	10.66	10.66	10.66	10.66	10.66	71	
10.66	189.33	10.66	10.66	10.66	10.66	10.66	10.66	10.66	10.66	71	
10.66	189.83	10.66	10.66	10.66	10.66	10.66	10.66	10.66	10.66	71	
10.66	190.32	10.66	10.66	10.66	10.66	10.66	10.66	10.66	10.66	71	
10.66	190.81	10.66	10.66	10.66	10.66	10.66	10.66	10.66	10.66	71	
10.66	191.30	10.66	10.66	10.66	10.66	10.66	10.66	10.66	10.66	71	
10.66	191.79	10.66	10.66	10.66	10.66	10.66	10.66	10.66	10.66	71	
10.66	192.28	10.66	10.66	10.66	10.66	10.66	10.66	10.66	10.66	71	
10.66	192.77	10.66	10.66	10.66	10.66	10.66	10.66	10.66	10.66	71	
10.66	193.26	10.66	10.66	10.66	10.66	10.66	10.66	10.66	10.66	71	
10.66	193.75	10.66	10.66	10.66	10.66	10.66	10.66	10.66	10.66	71	
10.66	194.24	10.66	10.66	10.66	10.66	10.66	10.66	10.66	10.66	71	
10.66	194.73	10.66	10.66	10.66	10.66	10.66	10.66	10.66	10.66	71	
10.66	195.22	10.66	10.66	10.66	10.66	10.66	10.66	10.66	10.66	71	
10.66	195.71	10.66	10.66	10.66	10.66	10.66	10.66	10.66	10.66	71	
10.66	196.20	10.66	10.66	10.66	10.66	10.66	10.66	10.66	10.66	71	
10.66	196.69	10.66	10.66	10.66	10.66	10.66	10.66	10.66	10.66	71	
10.66	197.18	10.66	10.66	10.66	10.66	10.66	10.66	10.66	10.66	71	
10.66	197.67	10.66	10.66	10.66	10.66	10.66	10.66	10.66	10.66	71	
10.66	198.16	10.66	10.66	10.66	10.66	10.66	10.66	10.66	10.66	71	
10.66	198.65	10.66	10.66	10.66	10.66	10.66	10.66	10.66	10.66	71	
10.66	199.14	10.66	10.66	10.66	10.66	10.66	10.66	10.66	10.66	71	
10.66	199.63	10.66	10.66	10.66	10.66	10.66	10.66	10.66	10.66	71	
10.66	200.12	10.66	10.66	10.66	10.66	10.66	10.66	10.66	10.66	71	
10.66	200.61	10.66	10.66	10.66	10.66	10.66	10.66	10.66	10.66	71	
10.66	201.10	10.66	10.66	10.66	10.66	10.66	10.66	10.66	10.66	71	
10.66	201.59	10.66	10.66	10.66	10.66	10.66	10.66	10.66	10.66	71	
10.66	202.08	10.66	10.66	10.66	10.66	10.66	10.66	10.66	10.66	71	
10.66	202.57	10.66	10.66	10.66	10.66	10.66	10.66	10.66	10.66	71	
10.66	203.06	10.66	10.66	10.66	10.66	10.66	10.66	10.66	10.66	71	
10.66	203.55	10.66	10.66	10.66	10.66	10.66	10.66	10.66	10.66	71	
10.66	204.04	10.66	10.66	10.66	10.66	10.66	10.66	10.66	10.66	71	
10.66	204.53	10.66	10.66	10.66	10.66	10.66	10.66	10.66	10.66	71	
10.66	205.02	10.66	10.66	10.66	10.66	10.66	10.66	10.66	10.66	71	
10.66	205.51	10.66	10.66	10.66	10.66	10.66	10.66	10.66	10.66	71	
10.66	206.00	10.66	10.66	10.66	10.66	10.66	10.66	10.66	10.66	71	
10.66	206.49	10.66	10.66	10.66	10.66	10.66	10.66	10.66	10.66	71	
10.66	206.98	10.66	10.66	10.66	10.66	10.66	10.66	10.66	10.66	71	
10.66	207.47	10.66	10.66	10.66	10.66	10.66	10.66	10.66	10.66	71	
10.66	207.96	10.66	10.66	10.66	10.66	10.66	10.66	10.66	10.66	71	
10.66	208.45	10.66	10.66	10.66	10.66	10.66	10.66	10.66	10.66	71	
10.66	208.94	10.66	10.66	10.66	10.66	10.66	10.66	10.66	10.66	71	
10.66	209.43	10.66	10.66	10.66	10.66	10.66	10.66	10.66	10.66	71	
10.66	209.92	10.66	10.66	10.66	10.66	10.66	10.66	10.66	10.66	71	
10.66	210.41	10.66	10.66	10.66	10.66	10.66	10.66	10.66	10.66	71	
10.66	210.90	10.66	10.66	10.66	10.66	10.66	10.66	10.66	10.66	71	
10.66	211.39	10.66	10.66	10.66	10.66	10.66	10.66	10.66	10.66	71	
10.66	211.88	10.66	10.66	10.66	10.66	10.66	10.66	10.66	10.66	71	
10.66	212.37	10.66	10.66	10.66	10.66	10.66	10.66	10.66	10.66	71	
10.66	212.86	10.66	10.66	10.66	10.66	10.66	10.66	10.66	10.66	71	
10.66	213.35	10.66	10.66	10.66	10.66	10.66	10.66	10.66	10.66	71	
10.66	213.84	10.66	10.66	10.66	10.66	10.66	10.66	10.66	10.66	71	
10.66	214.33	10.66	10.66	10.66	10.66	10.66	10.66	10.66	10.66	71	
10.66	214.82	10.66	10.66	10.66	10.66	10.66	10.66	10.66	10.66	71	
10.66	215.31	10.66	10.66	10.66	10.66	10.66	10.66	10.66	10.66	71	
10.66	215.80	10.66	10.66	10.66	10.66	10.66	10.66	10.66	10.66	71	
10.66	216.29	10.66	10.66	10.66	10.66	10.66	10.66	10.66	10.66	71	
10.66	216.78	10.66	10.66	10.66	10.66	10.66	10.66	10.66	10.66	71	
10.66	217.27	10.66	10.66	10.66	10.66	10.66	10.66	10.66	10.66	71	
10.66	217.76	10.66	10.66	10.66	10.66	10.66	10.66	10.66	10.66	71	
10.66	218.25	10.66	10.66	10.66	10.66	10.66	10.66	10.66	10.66	71	
10.66	218.74	10.66	10.66	10.66	10.66	10.66	10.66	10.66	10.66	71	
10.66	219.23	10.66	10.66	10.66	10.66	10.66	10.66	10.66	10.66	71	
10.66	219.72	10.66	10.66	10.66	10.66	10.66	10.66	10.66	10.66	71	
10.66	220.21	10.66	10.66	10.66	10.66	10.66	10.66	10.66	10.66	71	
10.66	220.70	10.66	10.66	10.66	10.66	10.66	10.66	10.66	10.66	71	
10.66	221.19	10.66	10.66	10.66	10.66	10.66	10.66	10.66	10.66	71	
10.66	221.68	10.66	10.66	10.66	10.66	10.66	10.66	10.66	10.66	71	
10.66	222.17	10.66	10.66	10.66	10.66	10.66	10.66	10.66	10.66	71	
10.66	222.66	10.66	10.66	10.66	10.66	10.66	10.66	10.66	10.66	71	
10.66	223.15	10.66	10.66	10.66	10.66	10.66	10.66	10.66	10.66	71	
10.66	223.64	10.66	10.66	10.66	10.66	10.66	10.66	10.66	10.66	71	
10.66	224.13	10.66	10.66	10.66	10.66	10.66	10.66	10.66	10.66	71	
10.66	224.62	10.66	10.66	10.66	10.66	10.66	10.66	10.66	10.66	71	
10.66	225.11	10.66	10.66	10.66	10.66	10.66	10.66	10.66	10.66	71	
10.66	225.60	10.66	10.66	10.66	10.66	10.66	10.66	10.66	10.66	71	
10.66	226.09	10.66	10.66	10.66	10.66	10.66	10.66	10.66	10.66	71	
10.66	226.58	10.66	10.66	10.66	10.66	10.66	10.66	10.66	10.66	71	
10.66	227.07	10.66	10.66	10.66	10.66	10.66	10.66	10.66	10.66	71	
10.66	227.56	10.66	10.66	10.66	10.66	10.66	10.66	10.66	10.66	71	
10.66	228.05	10.66	10.66	10.66	10.66	10.66	10.66	10.66	10.66	71	
10.66	228.54	10.66	10.66	10.66	10.66	10.66	10.66	10.66	10.66	71	
10.66	229.03	10.66	10.66	10.66	10.66	10.66	10.66	10.66	10.66	71	
10.66	229.52	10.66	10.66	10.66	10.66	10.66	10.66	10.66	10.66	71	
10.66	230.01	10.66									