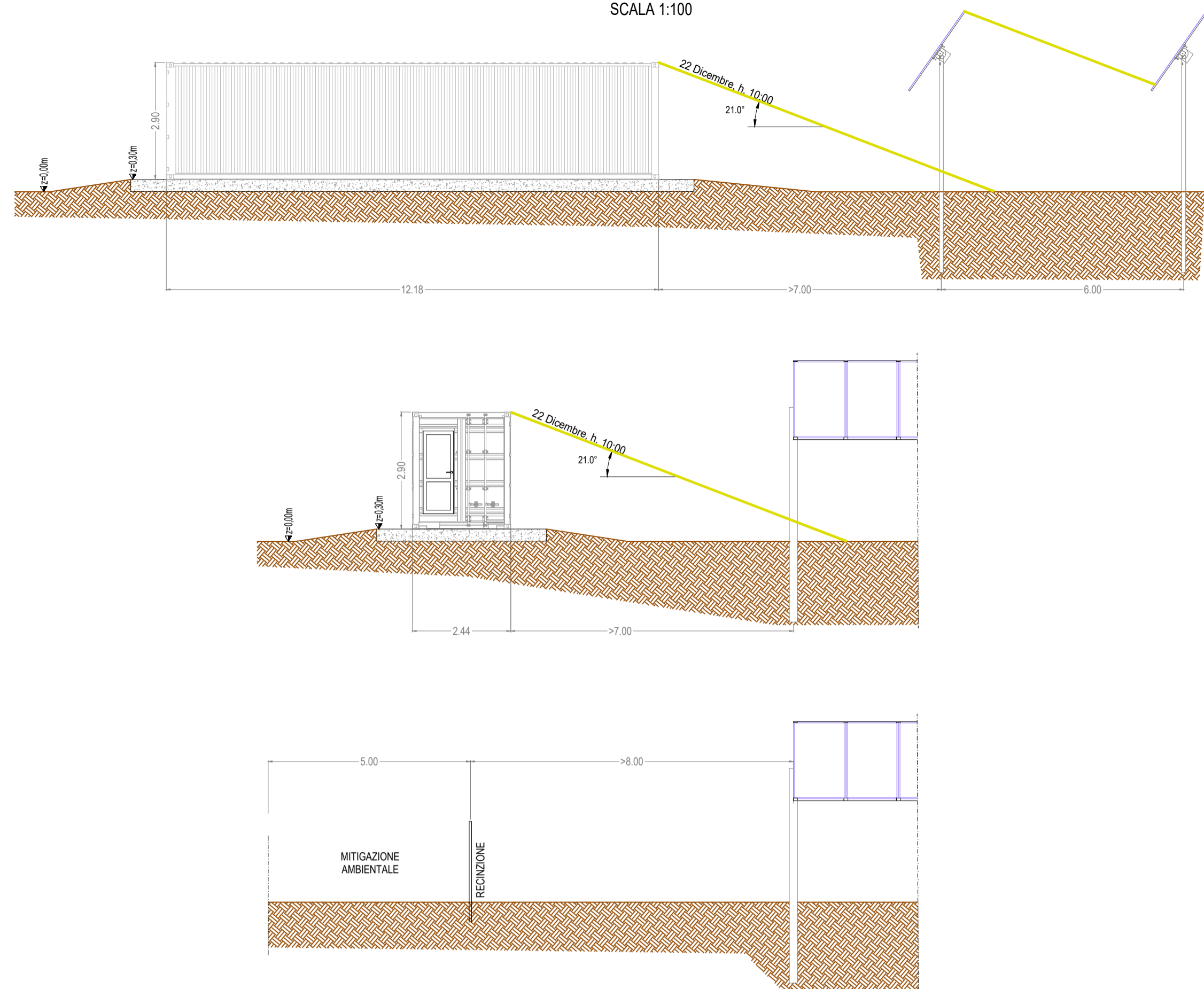
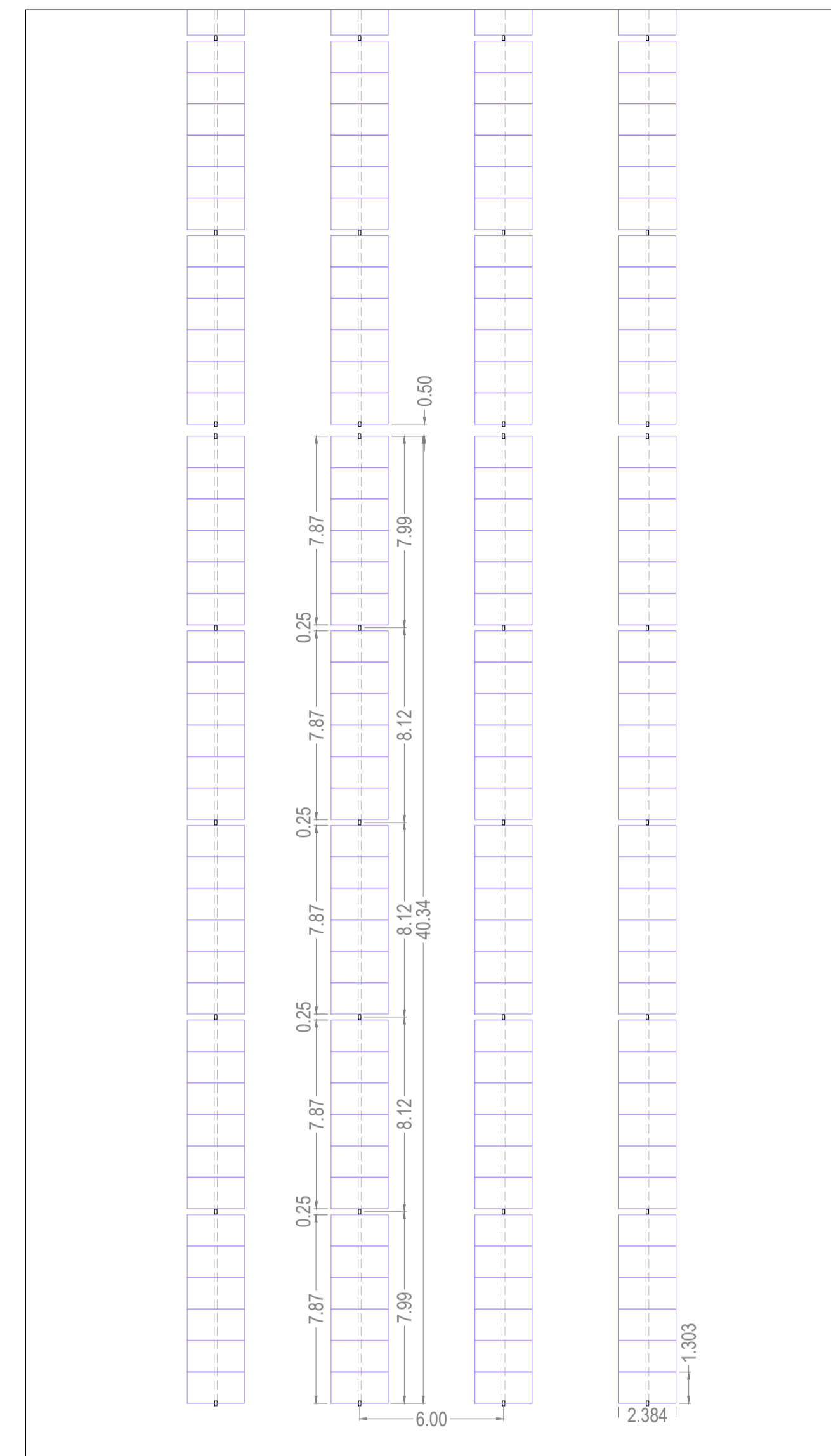


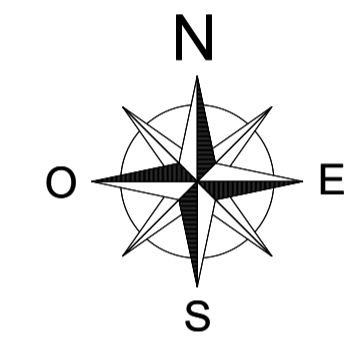
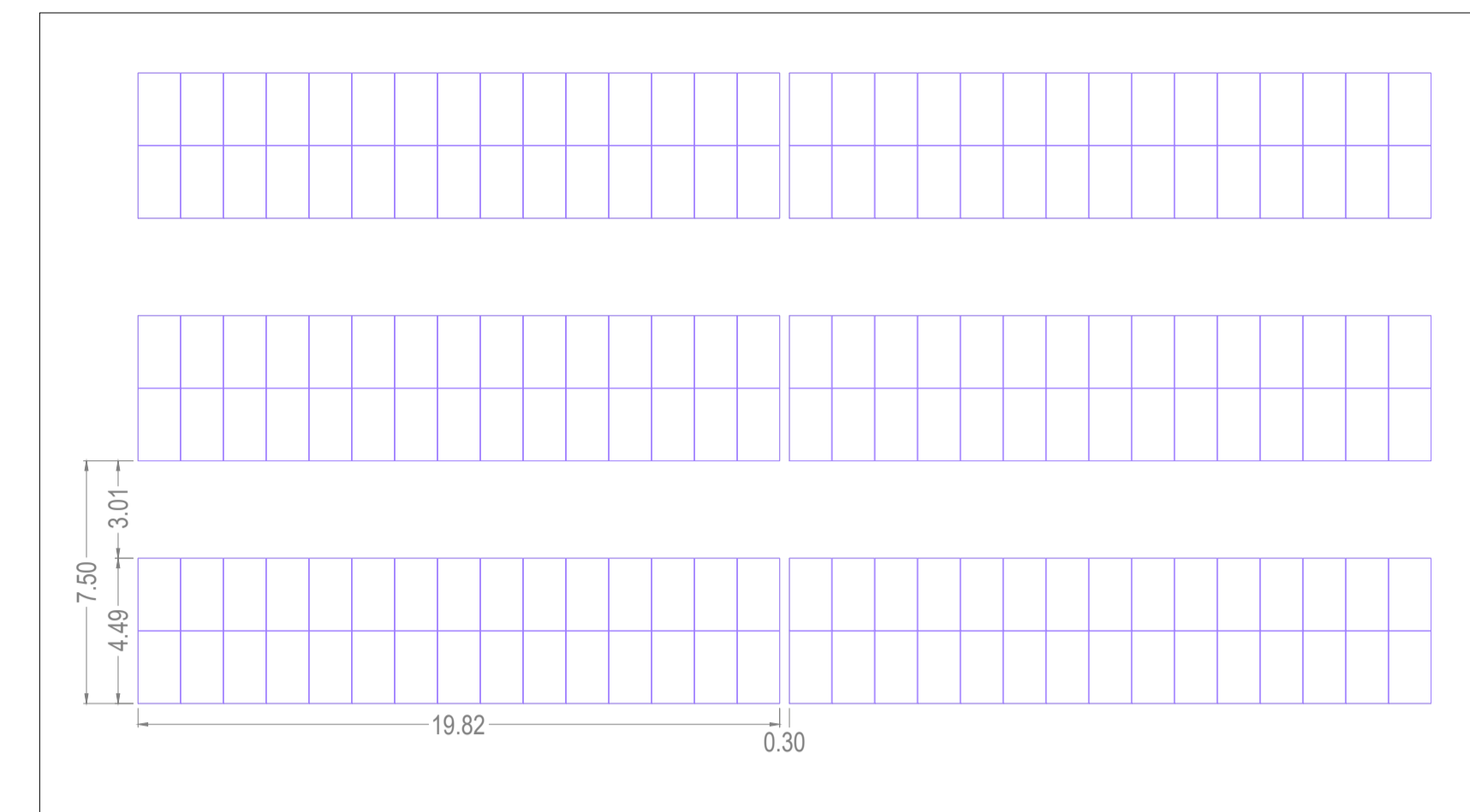
STUDIO OMBREGGIAMENTI SCALA 1:100



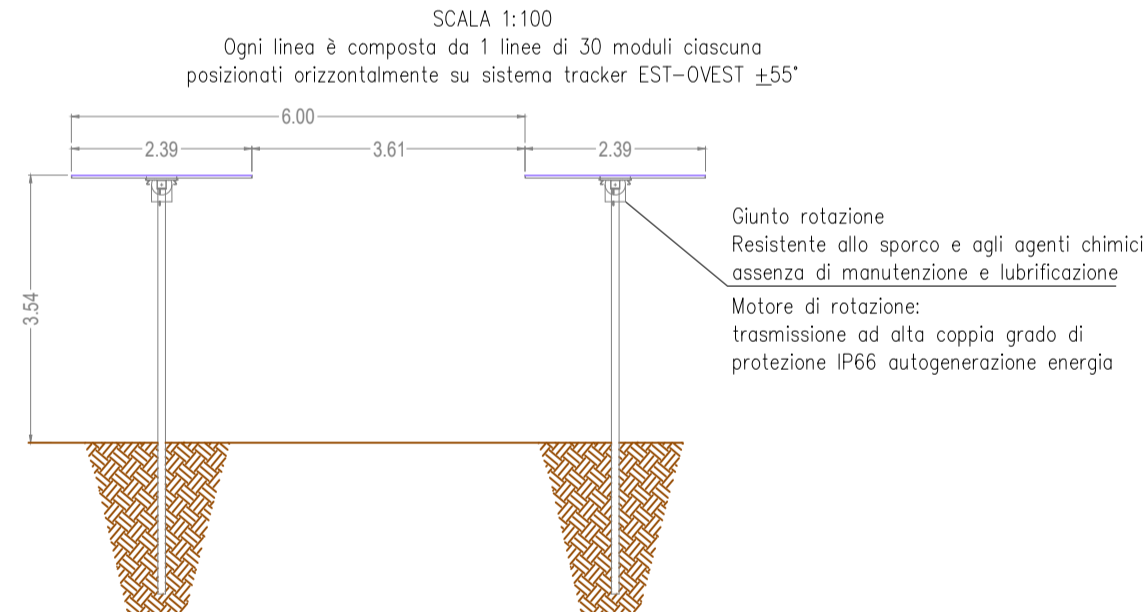
DETTAGLIO QUOTATURE TRACKER SCALA 1:200



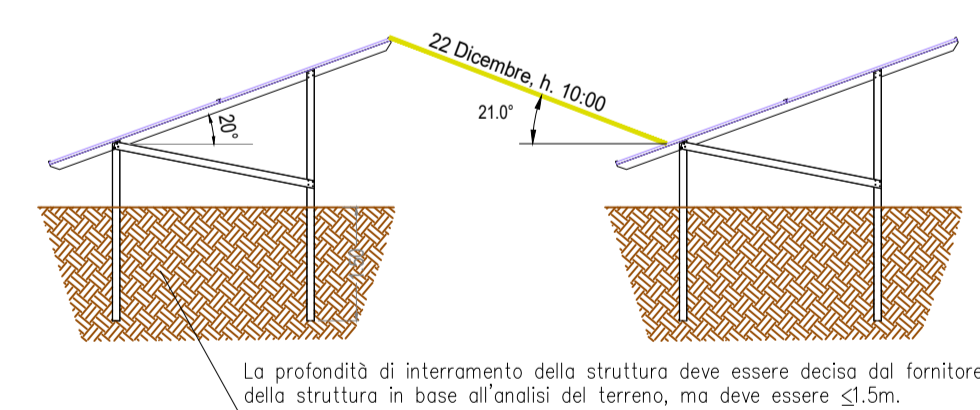
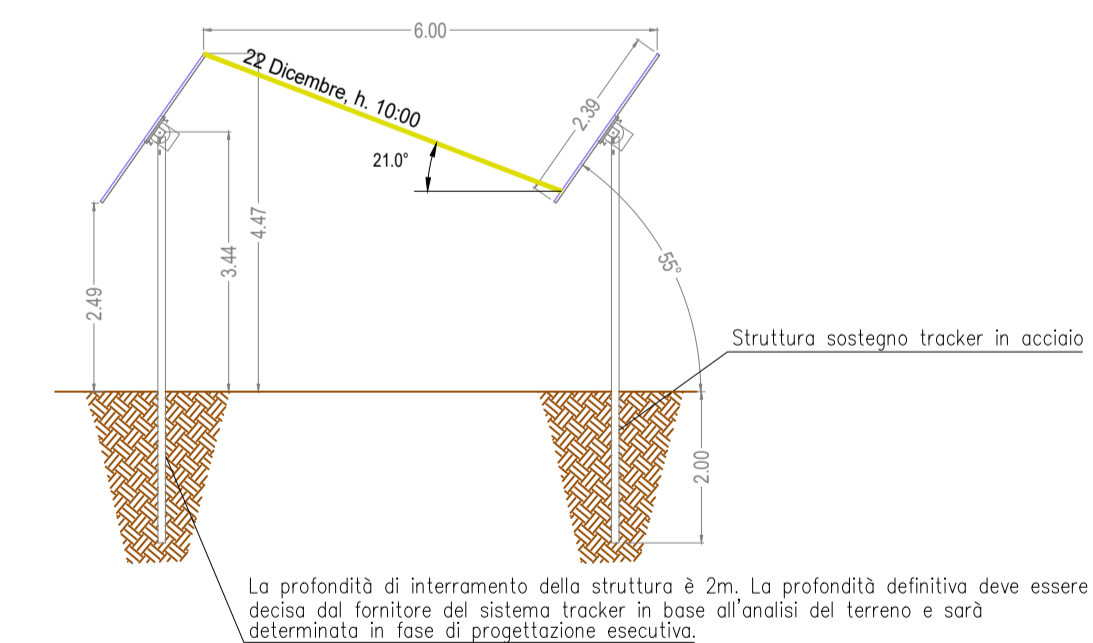
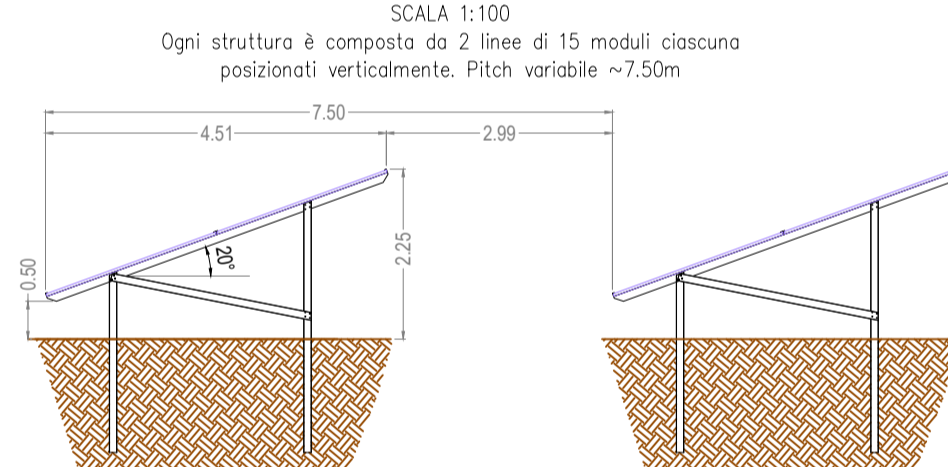
DETTAGLIO QUOTATURE FISSO SCALA 1:200



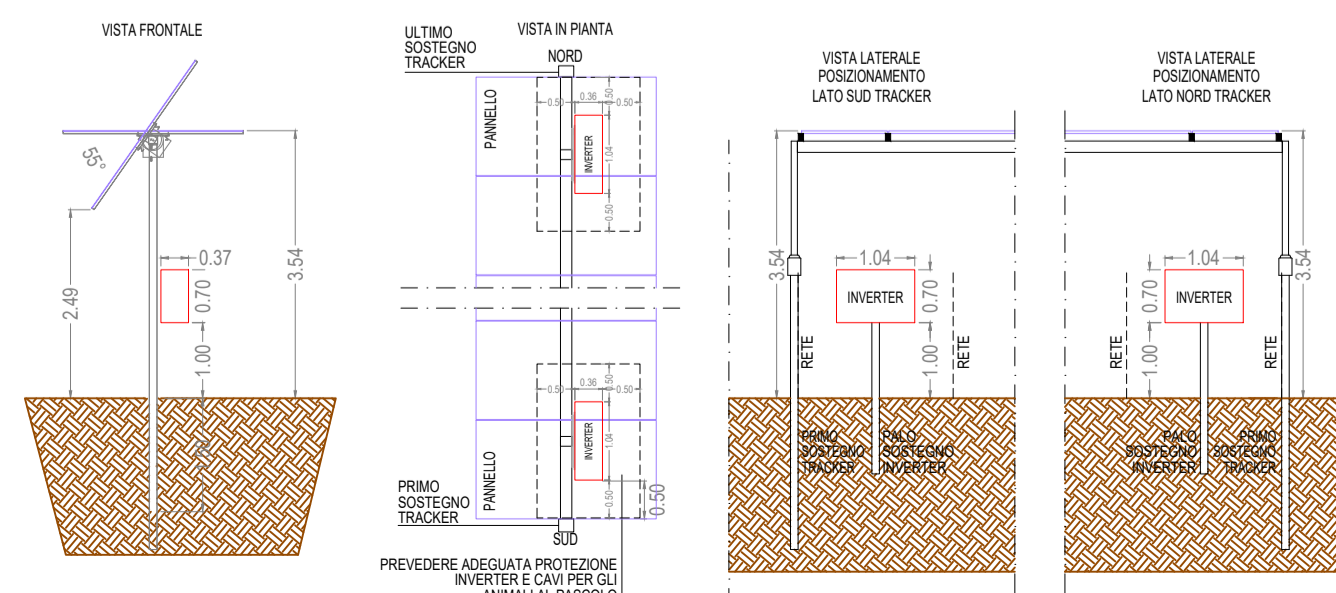
VISTA LATERALE SISTEMA TRACKER SCALA 1:100



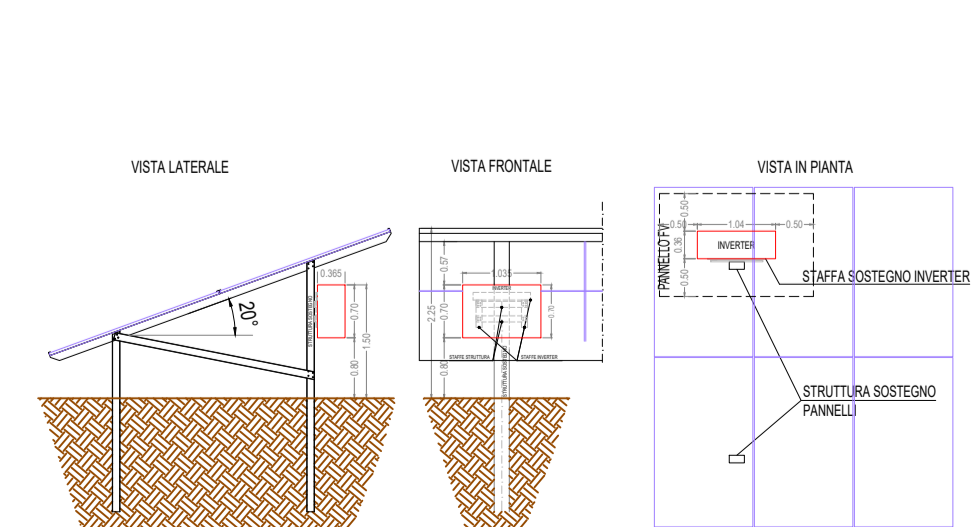
VISTA LATERALE SISTEMA FISSO SCALA 1:100



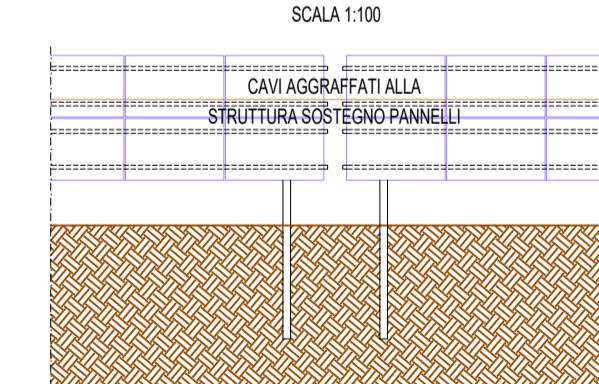
INSTALLAZIONE INVERTER TRACKER SCALA 1:100



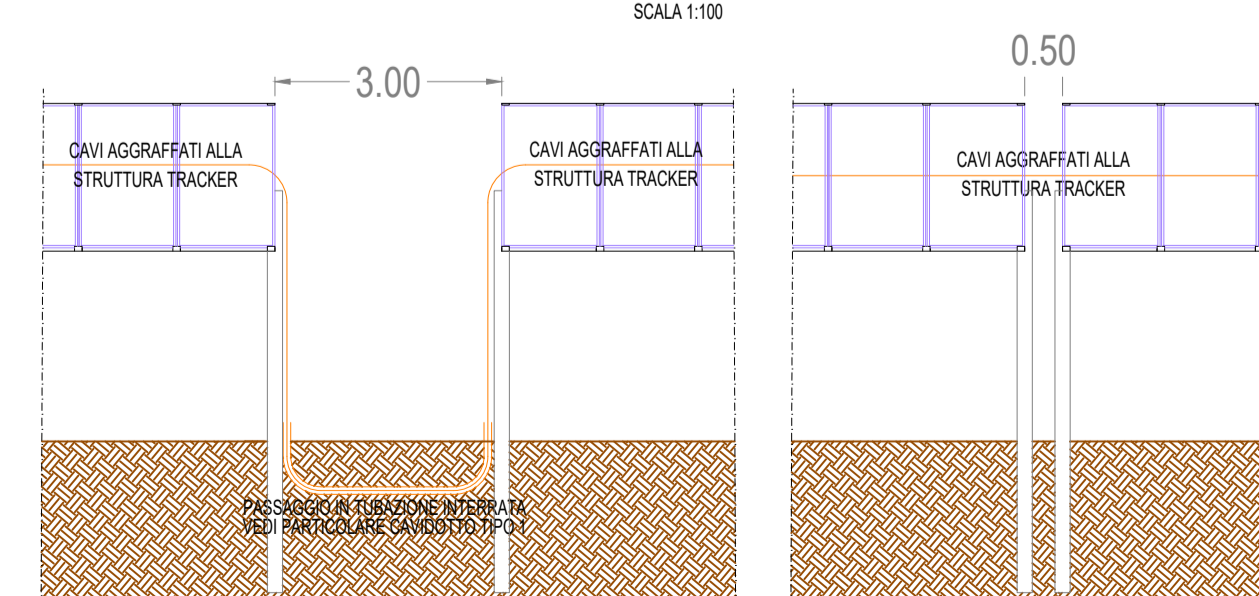
INSTALLAZIONE INVERTER FISSO SCALA 1:100



PASSAGGIO CAVI DC FISSO SCALA 1:100



PASSAGGIO CAVI DC TRA TRACKER SCALA 1:100



 **COMUNE DI POMARICO**
PROVINCIA DI MATERA
REGIONE BASILICATA

**PROGETTO DEFINITIVO DI UN IMPIANTO
AGRI-FOTOVOLTAICO
DI POTENZA DI PICCO P=19'998.00 kWp
E POTENZA IN IMMISSIONE P=16'899.86kW**

Proponente

SOLAR ENERGY DODICI S.R.L.

VIA SEBASTIAN ALTANN, 9 - 39100 BOLZANO (BZ)

PEC: solareenergydodici.srl@legalmail.it

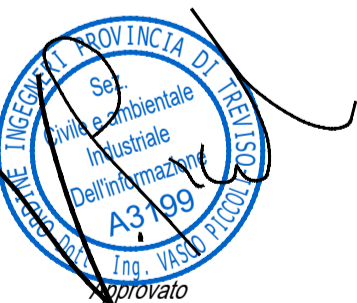
N.REA: BZ-228479 - C.F.: 03058780218

Progettazione

Preparato
Danilo Brambilla

Verificato
Gianandrea Ing. Bertinazzo

Approvato
Vasco Ing. Piccoli



PROGETTAZIONE DEFINITIVA

Titolo elaborato

**IMPIANTO AGRI-FOTOVOLTAICO
PARTICOLARI STRUTTURA FV E DETTAGLI**

Elaborato N.

Data emissione
25/03/22

A.12.b.16

Nome file
POMARICO

N. Progetto
SOLD15

Scala

00 25/03/22 PRIMA EMISSIONE

REV. DATA DESCRIZIONE

L. PRESENTE DOCUMENTO NON POTRA' ESSERE COPIATO, RIPRODOTTO O ALTAMENTE PUBBLICATO IN TUTTO O IN PARTE, SENZA IL CONSENSO SCRITTO DI SOLAR ENERGY DODICI SRL, OGNI UTILIZZO NON AUTORIZZATO SARÀ PERSECUITO A NORMA DI LEGGE. THIS DOCUMENT CAN NOT BE COPIED, REPRODUCED OR PUBLISHED, EITHER IN PART OR IN ITS ENTIRETY, WITHOUT THE WRITTEN PERMISSION OF SOLAR ENERGY DODICI SRL. UNAUTHORIZED USE WILL BE PROSECUTED BY LAW.