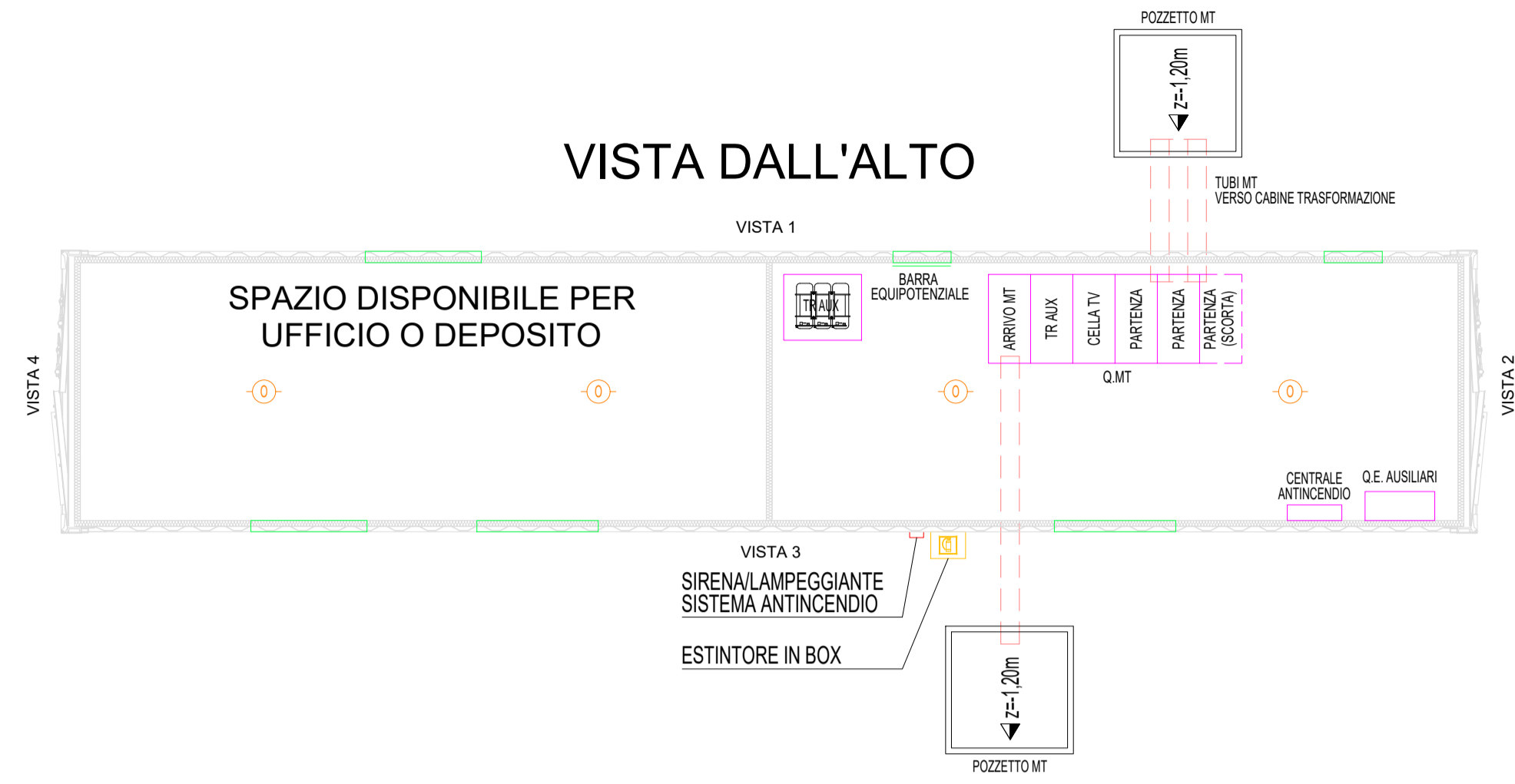


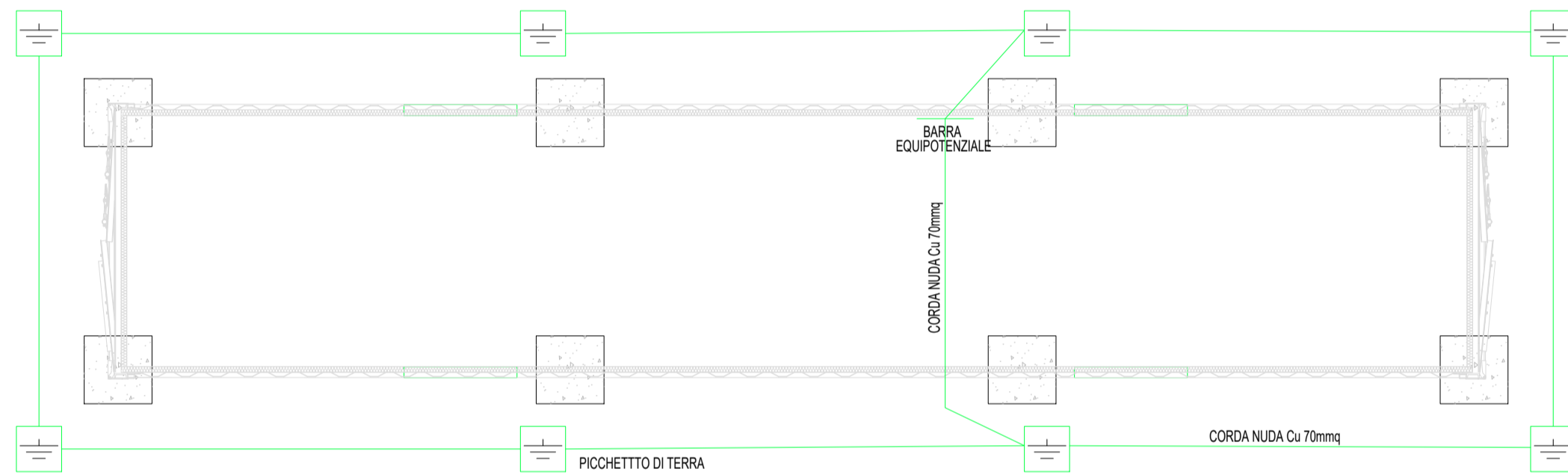
# CABINA SMISTAMENTO

SCALA 1:50

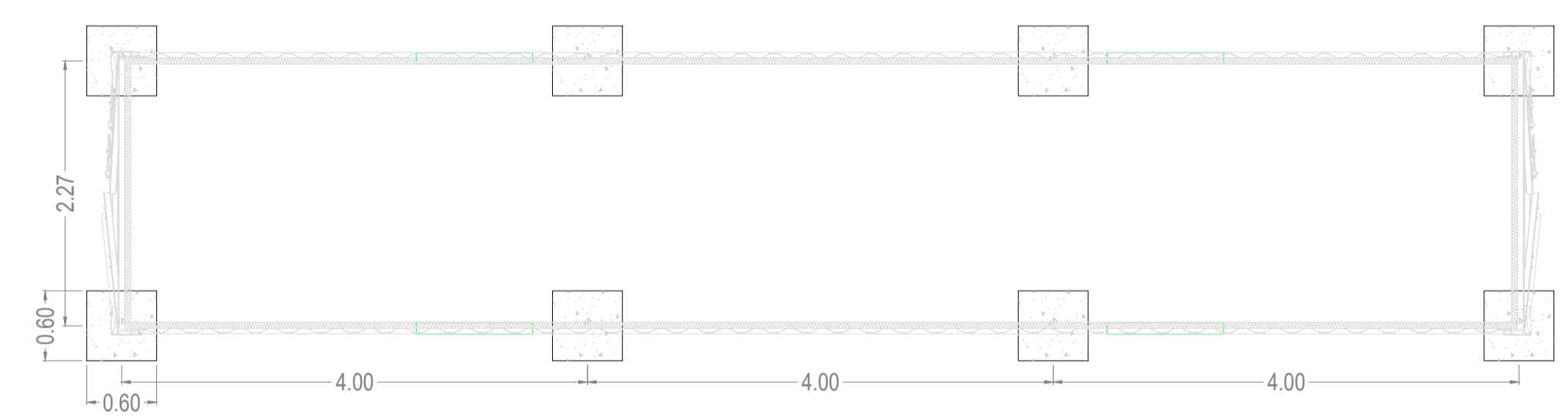
## VISTA DALL'ALTO



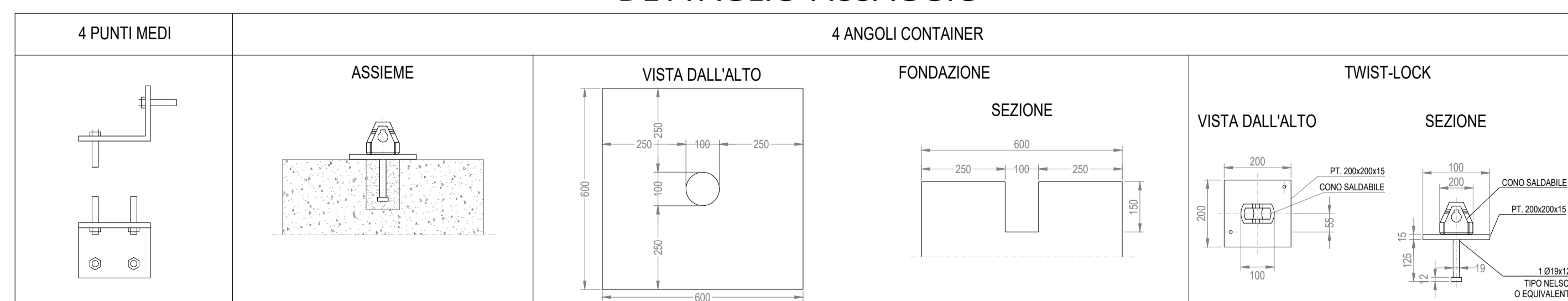
## IMPIANTO DI TERRA



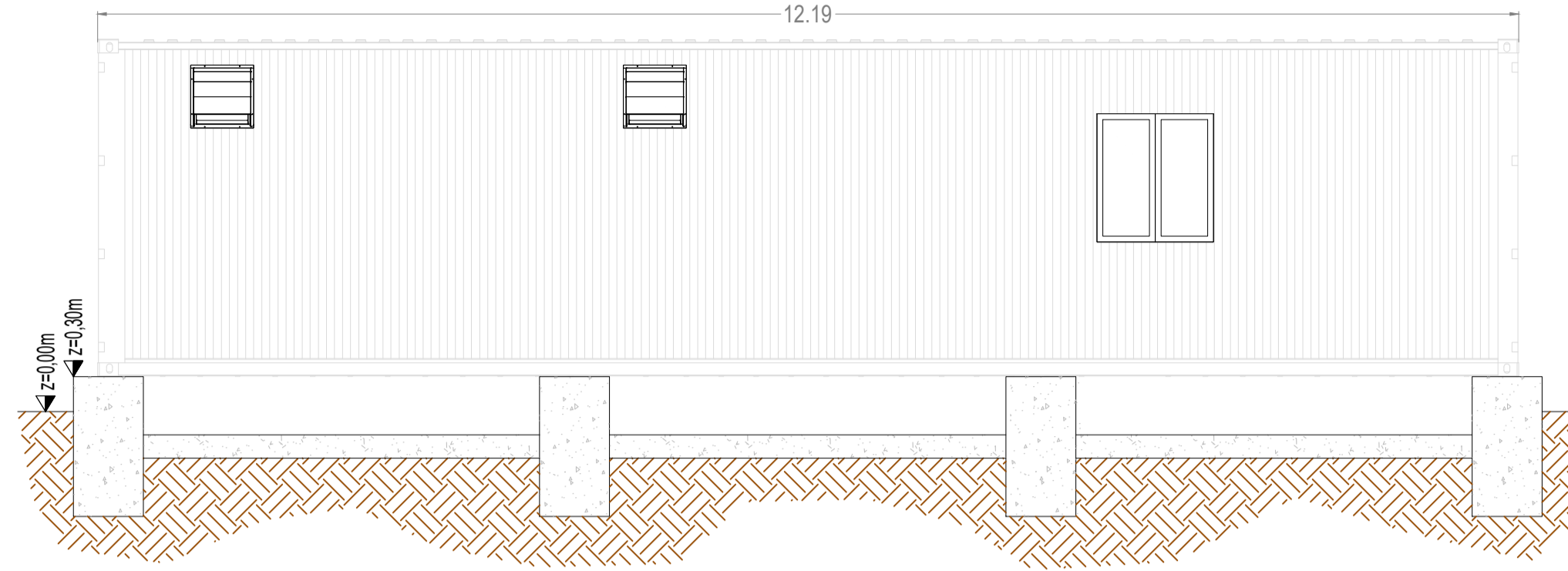
## VISTA FONDAZIONE



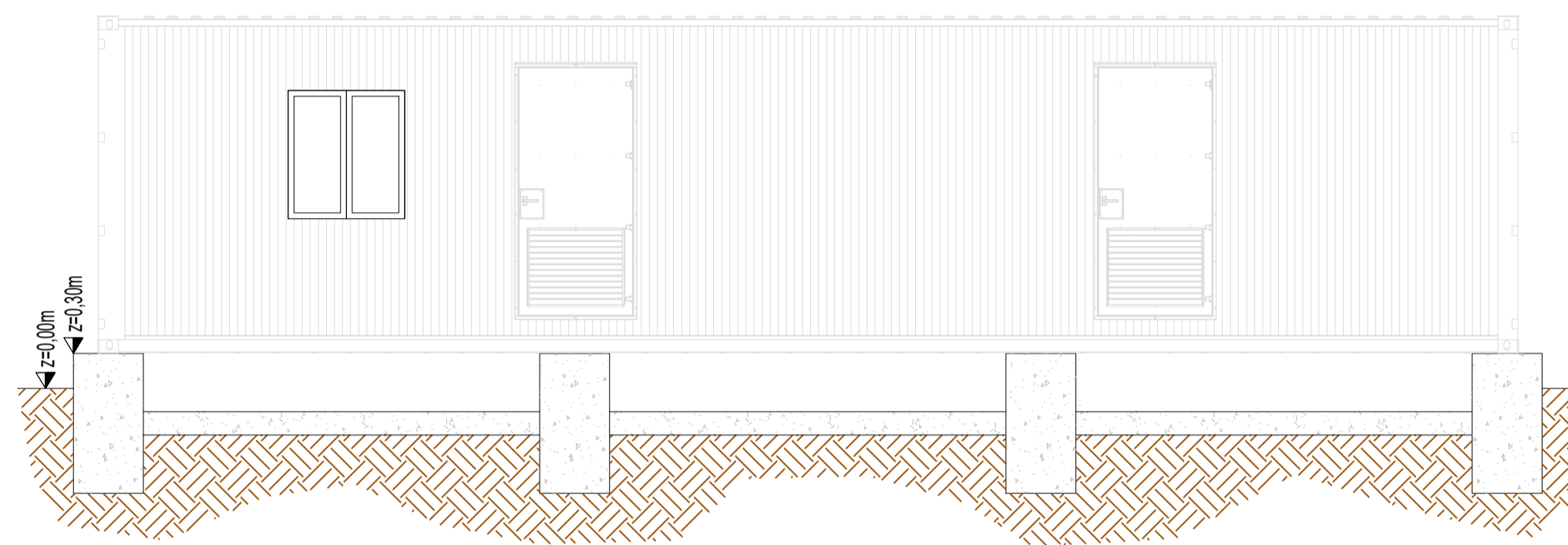
## DETTAGLIO FISSAGGIO



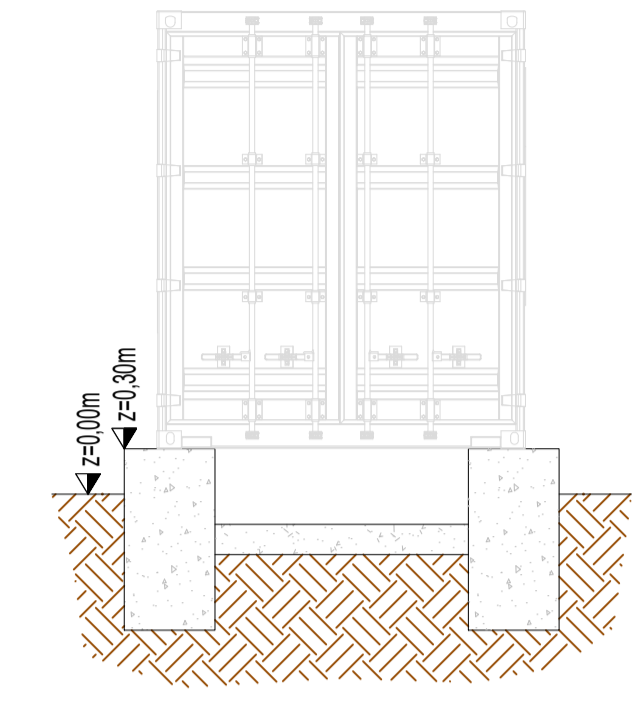
## VISTA 1



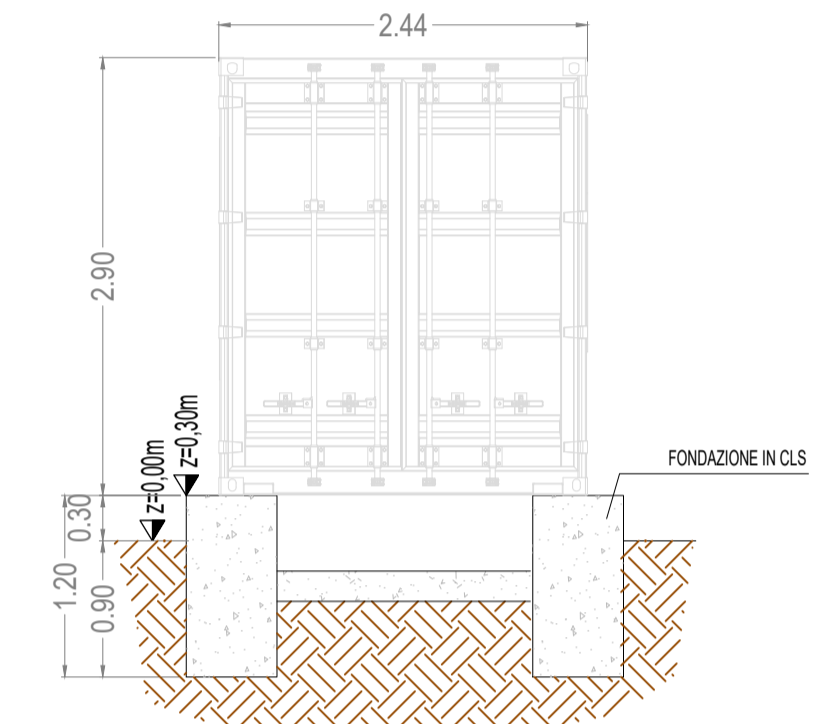
## VISTA 3



## VISTA 2



## VISTA 4



TERRENO RIMOSSO  
 ~3 mc PER PILASTRI FONDAZIONE  
 ~19 mc PER VASCHE E MAGRONE  
 ~3 mc PER POZZETTI ESTERNI  
 ~25 mc TOTALE

## DATA SHEET

CONTAINER MARINO HC 40' - DIMENSIONI: 12.20x2.45x2.90 [m]  
 COLORE: RAL 7035 CON VERNICIATURA C3  
 (CATEGORIA DI CORROSIONE IN ACCORDO CON LA NORMA ISO12944)  
 STRUTTURA IN ACCIAIO GALVANIZZATO A CALDO  
 INFISSI IN ACCIAIO INOX E GUARNIZIONI IN EPDM  
 PESO ~12t - GRADO DI PROTEZIONE IP33



PROGETTO DEFINITIVO DI UN IMPIANTO  
 AGRI-FOTOVOLTAICO  
 DI POTENZA DI PICCO P=19'998.00 kWp  
 E POTENZA IN IMMISSIONE P=16'899.86kW

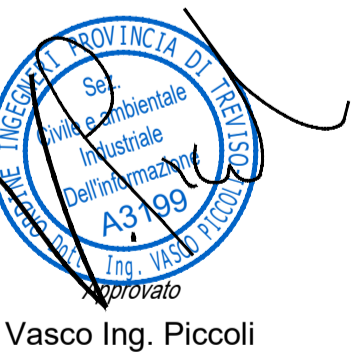
Proponente

**SOLAR ENERGY DODICI S.R.L.**  
 VIA SEBASTIAN ALTANN, 9 - 39100 BOLZANO (BZ)  
 PEC: solareenergydodici.srl@legalmail.it  
 N.REA: BZ-228479 - C.F.: 03058780218

Progettazione

Preparato  
 Danilo Brambilla

Verificato  
 Gianandrea Ing. Bertinazzo



## PROGETTAZIONE DEFINITIVA

Titolo elaborato

IMPIANTO AGRI-FOTOVOLTAICO  
 PARTICOLARE CABINE ELETTRICHE TRASFORMAZIONE-SMISTAMENTO  
 PIANTA E VISTE

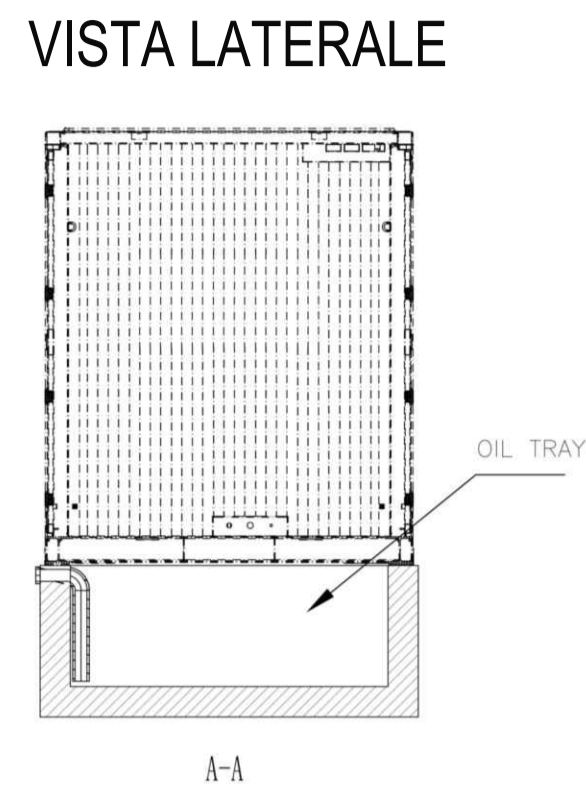
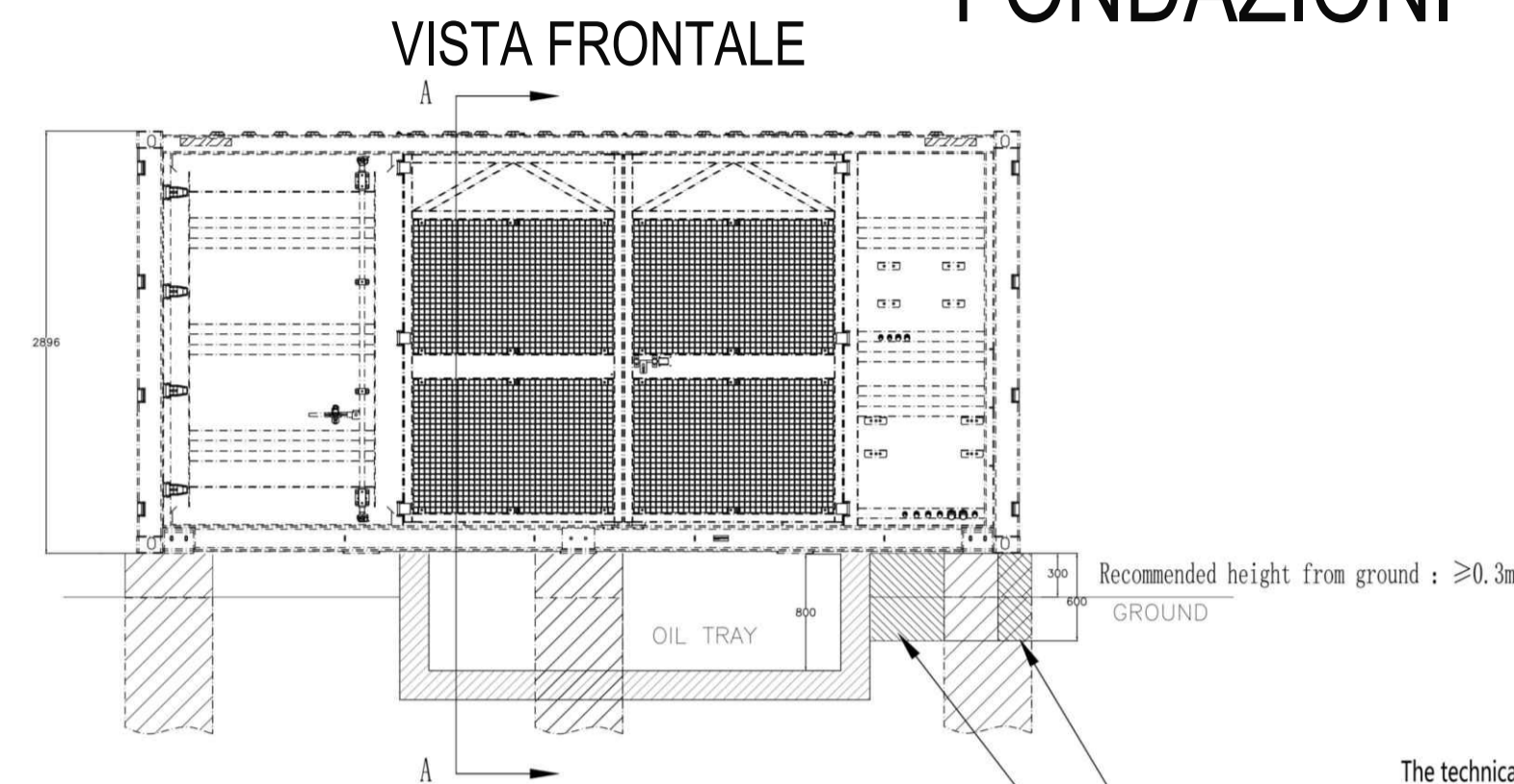
Elaborato N. <b>A.12.b.18.1</b>	Data emissione 25/03/22		
N. Progetto SOL015	Scala 1:50	00	25/03/22 PRIMA EMISSIONE
		REV.	DATA DESCRIZIONE



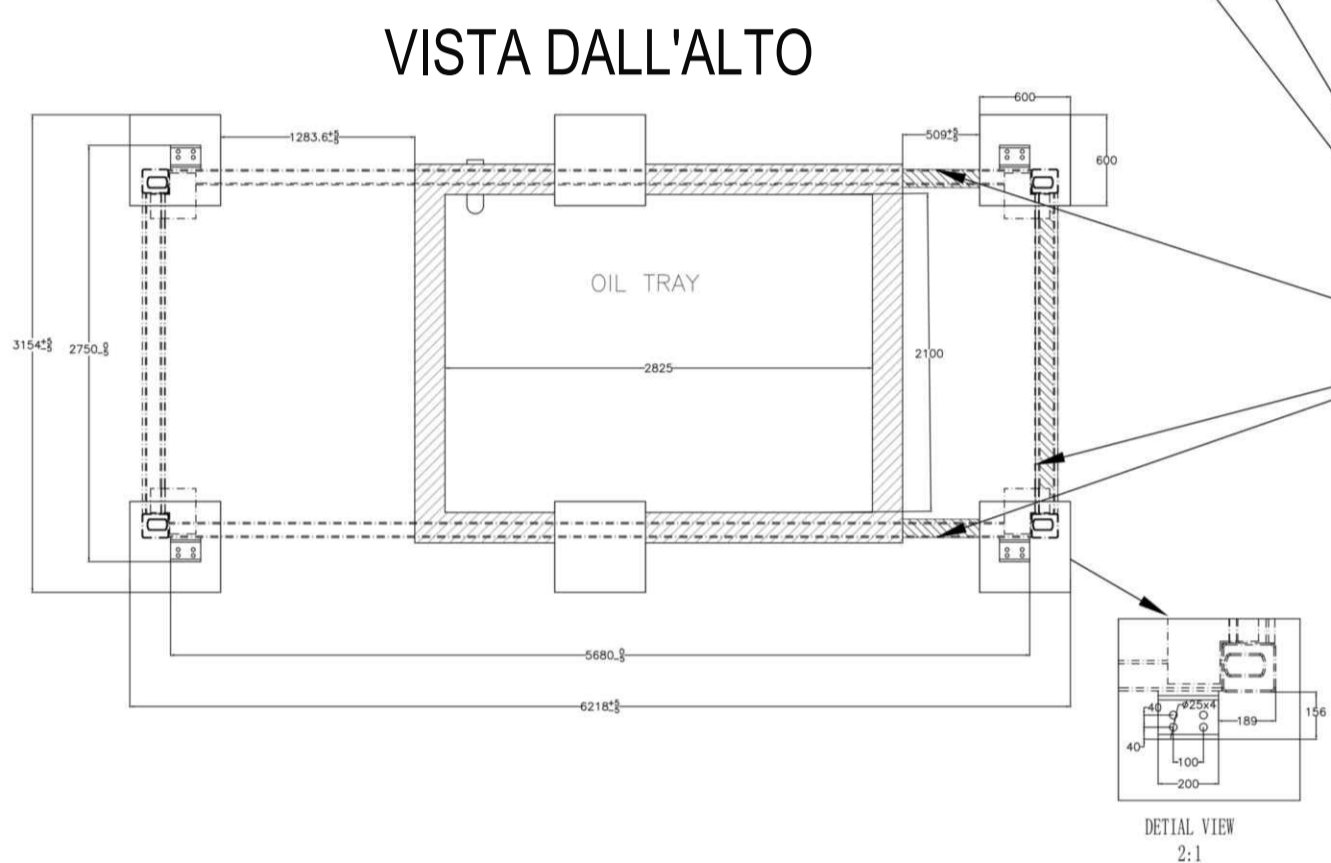
# CABINA TRASFORMAZIONE

SCALA 1:50

## FONDAZIONI

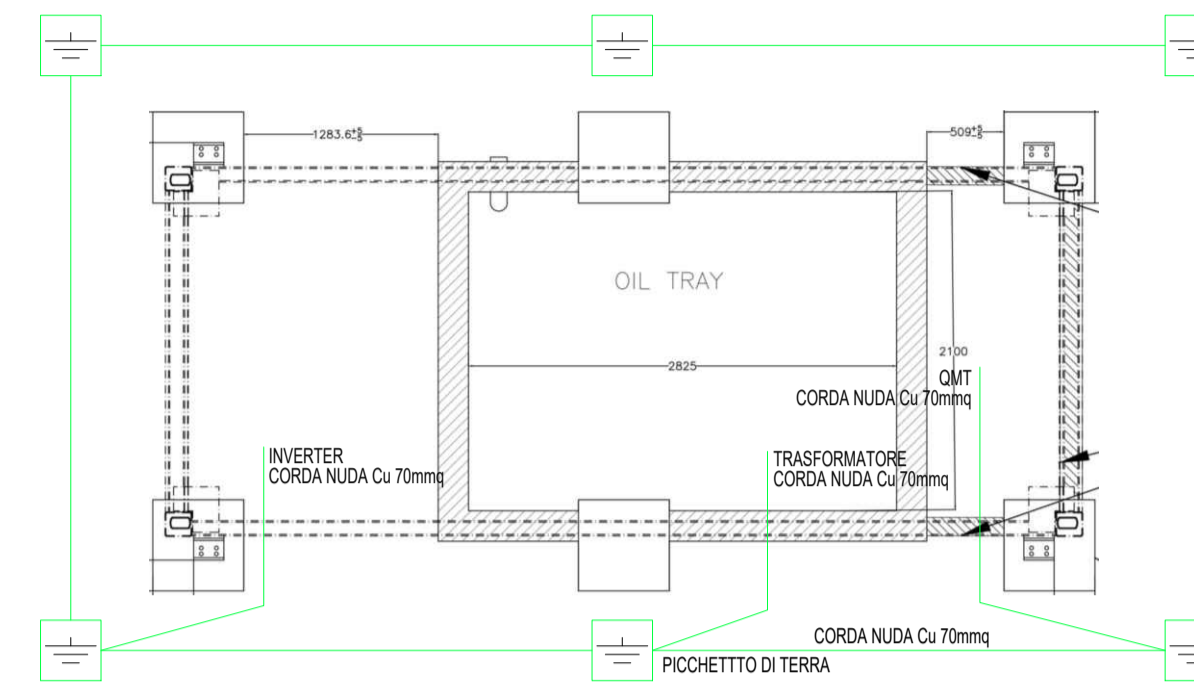


- The technical requirement:
1. The size of each cement column is recommended to be no less than 600x600mm, and the container shall be placed in the center of the foundation. Height of the column shall be determined according to the actual situation on site.
  2. The outline of the smart transformer station is length\*width:6058mm\*2438mm.
  3. The ladder should not block the low voltage and MV cables in and out. The insulation ladder is recommended to be put in front of the door when maintenance.
  4. Weight of STS-6000K-H1 is no more than 22 t, and transformer oil is mineral oil, noncorrosive. And the Volume of transformer oil is about 3850L (about 3.4t).
  5. Unmarked sizes shall be determined according to onsite conditions.



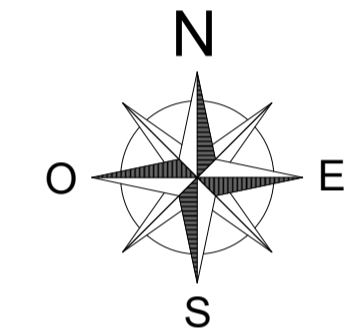
RESERVE PRESSURE RELIEF CHANNELS FOR THE RING MAIN UNIT, AND ADD PROTECTIVE MEASURES TO PREVENT HIGH TEMPERATURE GAS FROM BURNING NEARBY PERSONNEL DURING PRESSURE RELIEF. REFER TO USER MANUAL FOR MORE DETAILS.

## IMPIANTO DI TERRA

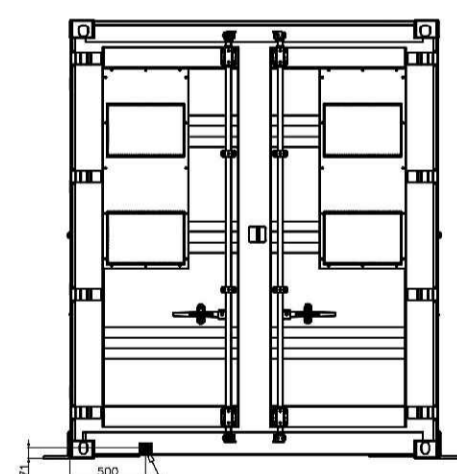


## DATA SHEET

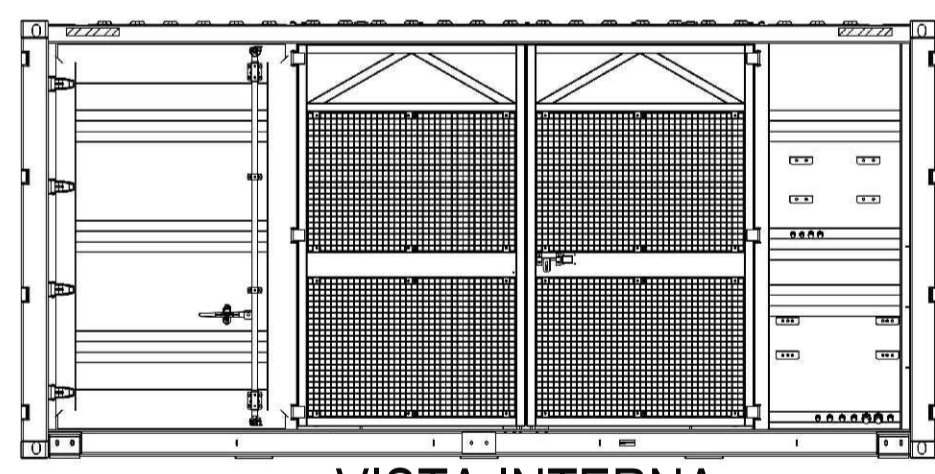
SKID - DIMENSIONI: 6.058x2.438x2.896 [m]  
 PESO: <18 ton  
 GRADO DI PROTEZIONE: IP54  
 TERRENO RIMOSSO  
 ~3.5 mc PER PILASTRI FONDAZIONE  
 ~12.0 mc PER VASCHE E MAGRONE  
 ~4.5 mc PER POZZETTI ESTERNI  
 ~20.0 mc TOTALE



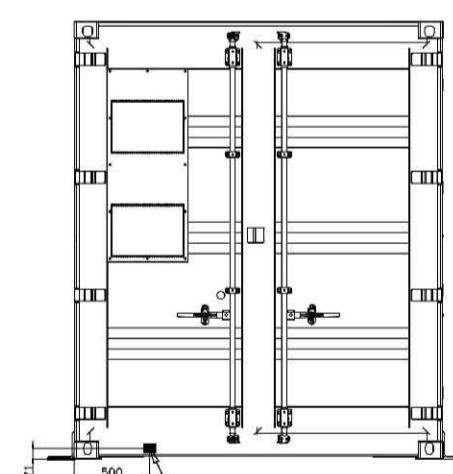
### VISTA DESTRA



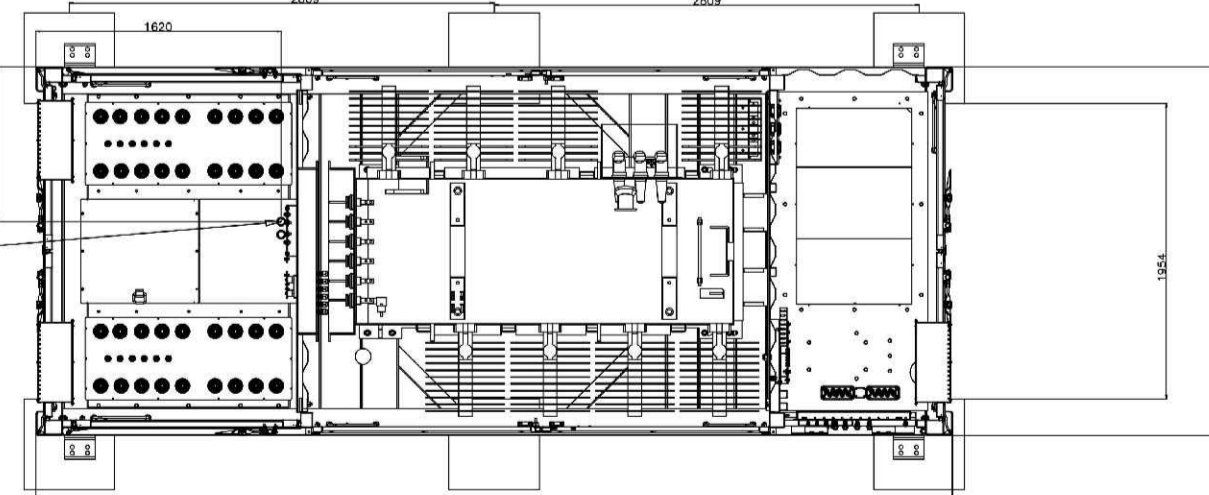
### VISTA FRONTALE



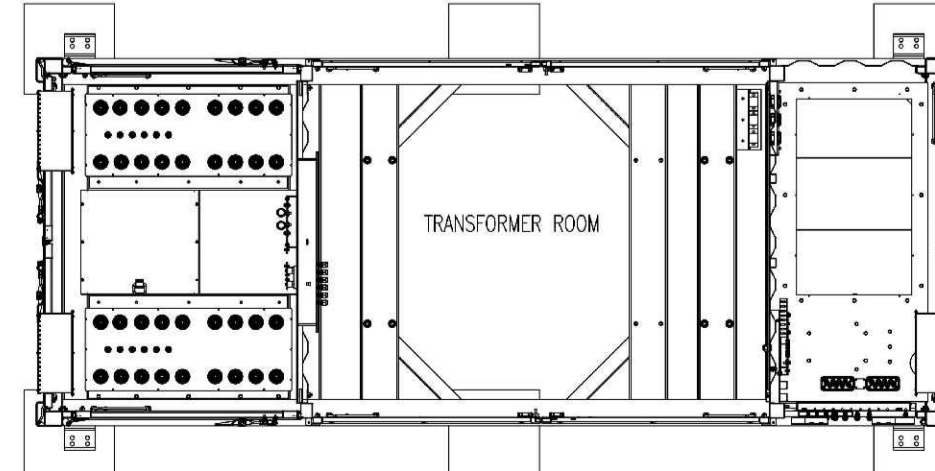
### VISTA SINISTRA



### VISTA INTERNA



### VISTA DALL'ALTO



EARTHING POINT A  
TRANSFORMER EARTHING LAP SURFACE: 350MM\*500MM,  
A HOLE #14 FOR CONNECTING TO THE EXTERNAL  
EARTHING SYSTEM IS RESERVED.

EARTHING POINT B  
TRANSFORMER EARTHING LAP SURFACE: 350MM\*500MM,  
A HOLE #14 FOR CONNECTING TO THE EXTERNAL  
EARTHING SYSTEM IS RESERVED.

   **COMUNE DI POMARICO**  
 PROVINCIA DI MATERA  
 REGIONE BASILICATA

PROGETTO DEFINITIVO DI UN IMPIANTO  
 AGRI-FOTOVOLTAICO  
 DI POTENZA DI PICCO P=19'998.00 kWp  
 E POTENZA IN IMMISSIONE P=16'899.86kW


Proponente

**SOLAR ENERGY DODICI S.R.L.**  
 VIA SEBASTIAN ALTANN, 9 - 39100 BOLZANO (BZ)  
 PEC: solareenergydodici.srl@legalmail.it  
 N.REA: BZ-228479 - C.F.: 03058780218

Progettazione

Preparato  
 Danilo Brambilla

Verificato  
 Gianandrea Ing. Bertinazzo

  
 Vasco Ing. Piccoli

## PROGETTAZIONE DEFINITIVA

Titolo elaborato

IMPIANTO AGRI-FOTOVOLTAICO  
 PARTICOLARE CABINE ELETTRICHE TRASFORMAZIONE-SMISTAMENTO  
 PIANTA E VISTA

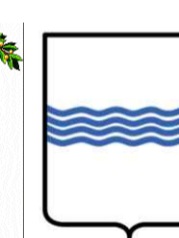
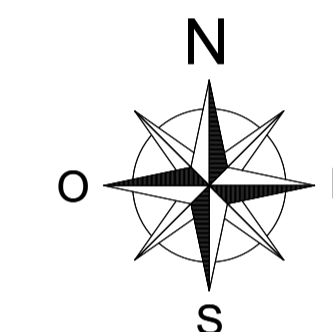
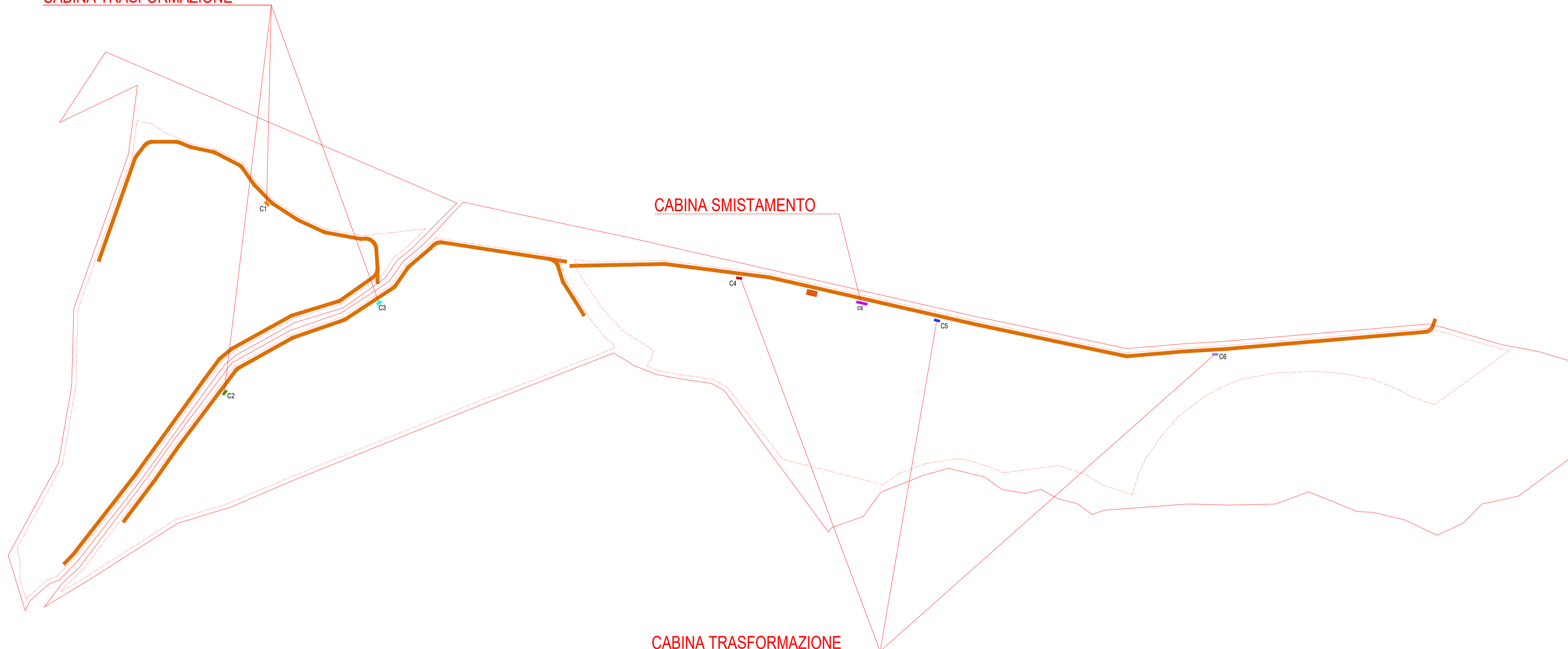
Elaborato N. <b>A.12.b.18.2</b>	Data emissione 25/03/22		
N. Progetto S01015	Nome file POMARICO		
Scala 1:50	00	25/03/22	PRIMA EMISSIONE
	REV.	DATA	DESCRIZIONE



CABINA TRASFORMAZIONE

CABINA SMISTAMENTO

CABINA TRASFORMAZIONE



COMUNE DI POMARICO  
 PROVINCIA DI MATERA  
 REGIONE BASILICATA

PROGETTO DEFINITIVO DI UN IMPIANTO  
 AGRI-FOTOVOLTAICO  
 DI POTENZA DI PICCO  $P=19'998.00$  kWp  
 E POTENZA IN IMMISSIONE  $P=16'899.86$  kW

Proponente

**SOLAR ENERGY DODICI S.R.L.**  
 VIA SEBASTIAN ALTANN, 9 - 39100 BOLZANO (BZ)  
 PEC: solareenergydodici.srl@legalmail.it  
 N.REA: BZ-228479 - C.F.: 03058780218

Progettazione



Preparato  
 Danilo Brambilla

Verificato  
 Gianandrea Ing. Bertinazzo

Approvato  
 Vasco Ing. Piccoli

## PROGETTAZIONE DEFINITIVA

Titolo elaborato

IMPIANTO AGRI-FOTOVOLTAICO  
 PARTICOLARE CABINE ELETTRICHE TRASFORMAZIONE-SMISTAMENTO  
 POSIZIONAMENTO EDIFICI

Elaborato N. <b>A.12.b.18.3</b>	Data emissione 25/03/22		
Nome file POMARICO			
N. Progetto SOL015	Scala 1:3'000	00	25/03/22
		REV.	DATA
			DESCRIZIONE
			PRIMA EMISSIONE