

CAMPO		
	AREA DENTRO RECINZIONE (ha)	%
VERDE	18.96	96.7%
GIALLO	0.65	3.3%
ROSSO	0.00	0.0%
TOTAL	19.61	100%




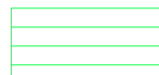

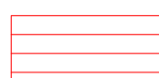
## TOTALE IMPIANTO

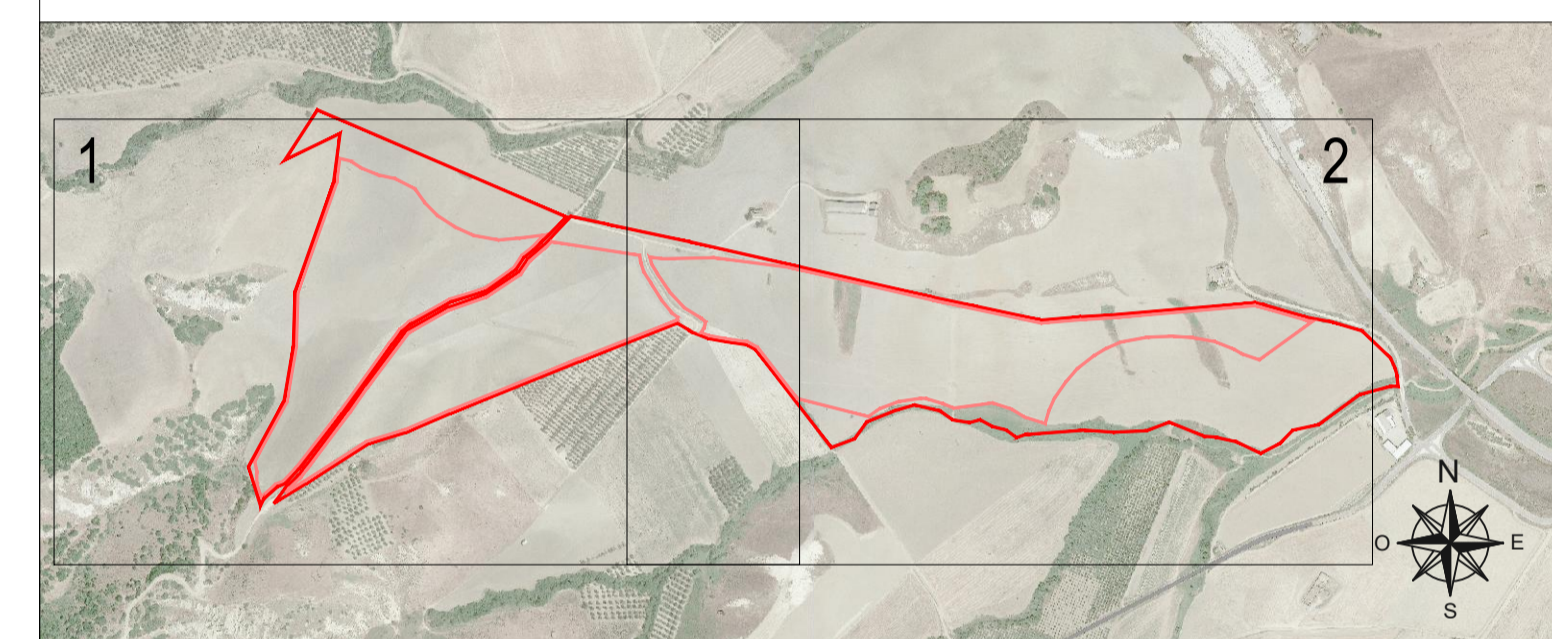
TRACKER 1x30: 357

STRUTTURE FISSO2x15: 635

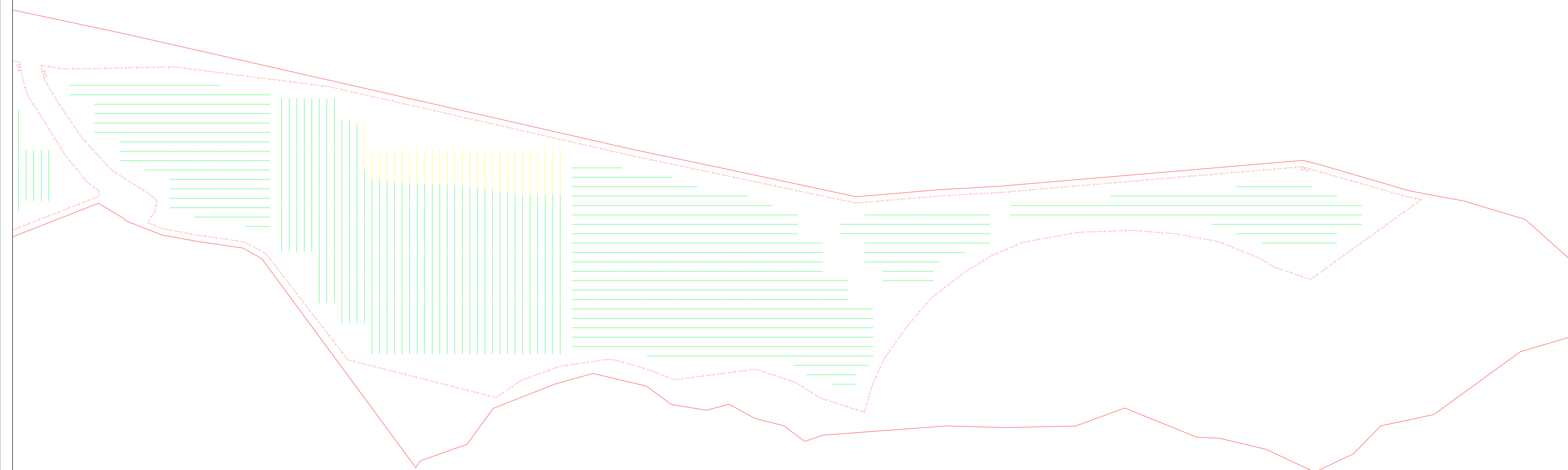
1



-  PENDENZA NORD-SUD <10%
-  PENDENZA NORD-SUD 10%<P<15%
-  PENDENZA NORD-SUD >15%
-  PENDENZA EST-OVEST <15%
-  PENDENZA EST-OVEST 15%<P<20%
-  PENDENZA EST-OVEST >20%



2



   **COMUNE DI POMARICO**  
**PROVINCIA DI MATERA**  
**REGIONE BASILICATA**

**PROGETTO DEFINITIVO DI UN IMPIANTO  
 AGRI-FOTOVOLTAICO  
 DI POTENZA DI PICCO P=19'998.00 kWp  
 E POTENZA IN IMMISSIONE P=16'899.86kW**

*Proponente*

**SOLAR ENERGY DODICI S.R.L.**  
 VIA SEBASTIAN ALTANN, 9 - 39100 BOLZANO (BZ)  
 PEC: solareenergydodici.srl@legalmail.it  
 N.REA: BZ-228479 - C.F.: 03058780218

*Progettazione*

*Preparato*  
 Danilo Brambilla

*Verificato*  
 Gianandrea Ing. Bertinazzo

*Approvato*  
 Vasco Ing. Piccoli



## PROGETTAZIONE DEFINITIVA

*Titolo elaborato*

**IMPIANTO AGRI-FOTOVOLTAICO  
 DETTAGLIO PENDENZE DI CAMPO**

<i>Elaborato N.</i> <b>A.12.b.20</b>	<i>Data emissione</i> 25/03/22			
<i>Nome file</i> POMARICO				
<i>N. Progetto</i> SOL015	<i>Scala</i> 1:2'000	00	25/03/22	PRIMA EMISSIONE
		REV.	DATA	DESCRIZIONE