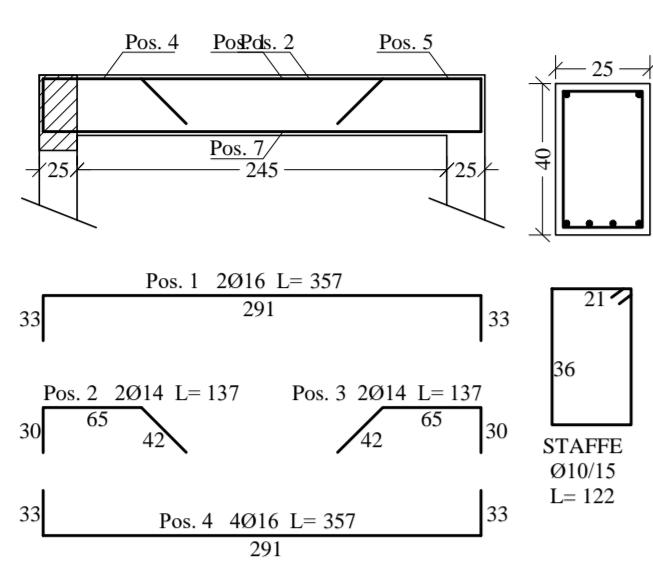
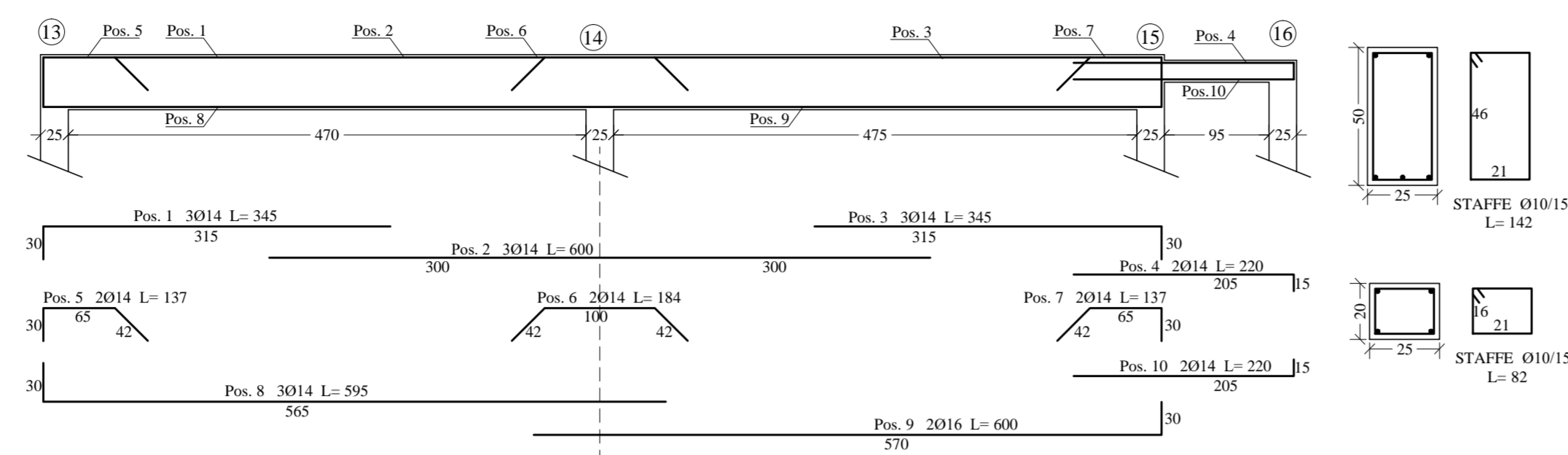


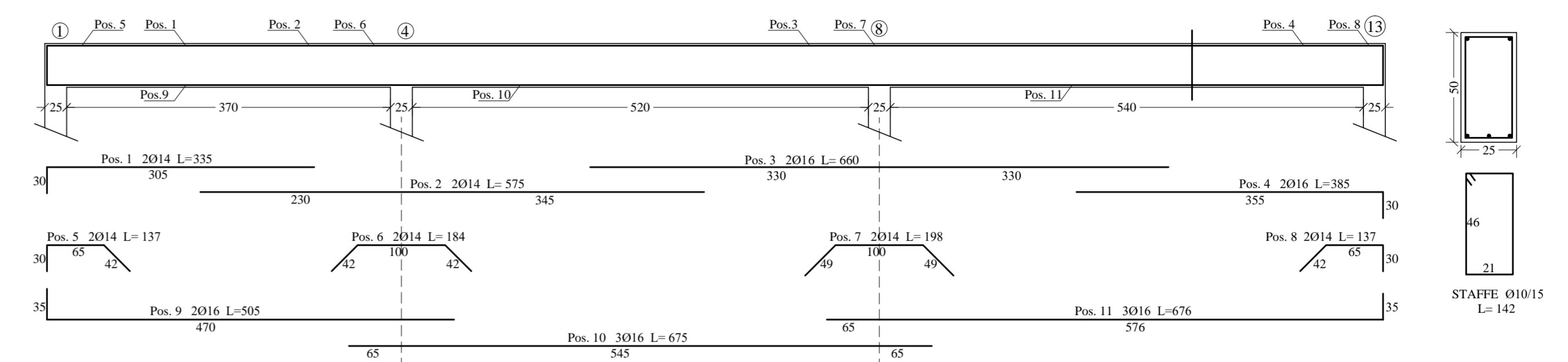
TRAVE 1 25 x 40



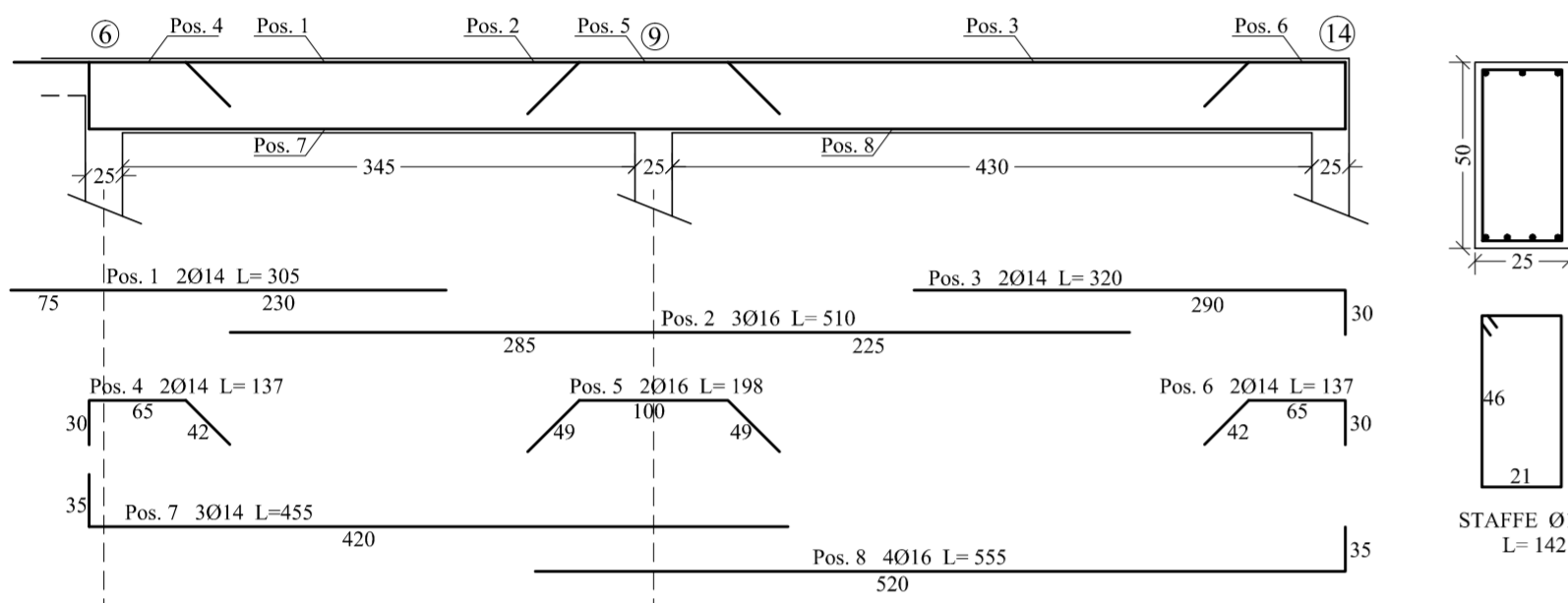
TRAVE 2 25 x 50



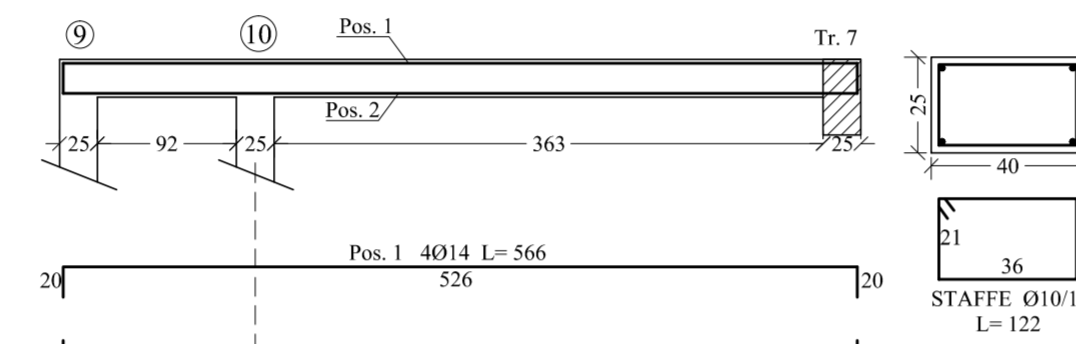
TRAVE 3 25 x 50



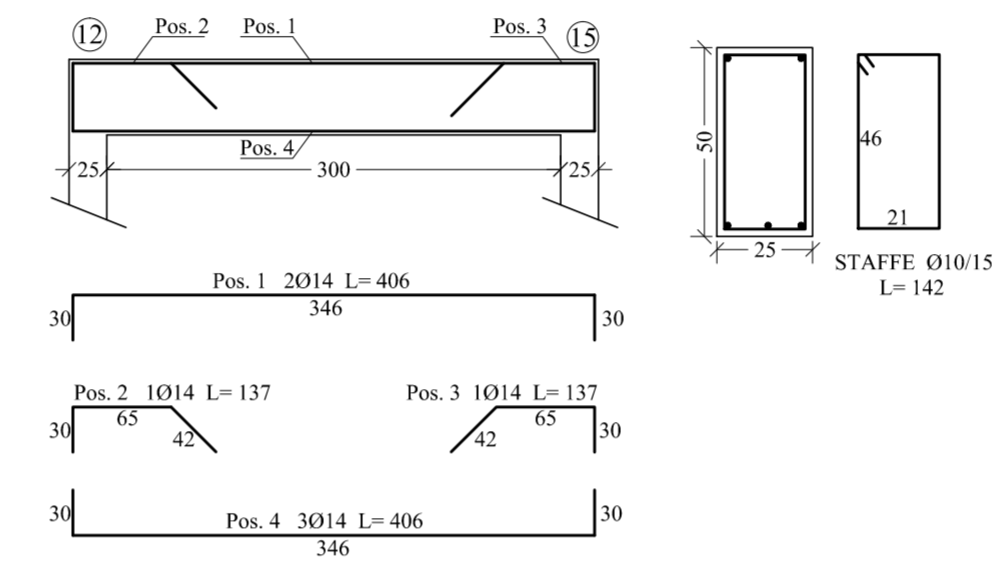
TRAVE 4 25 x 50



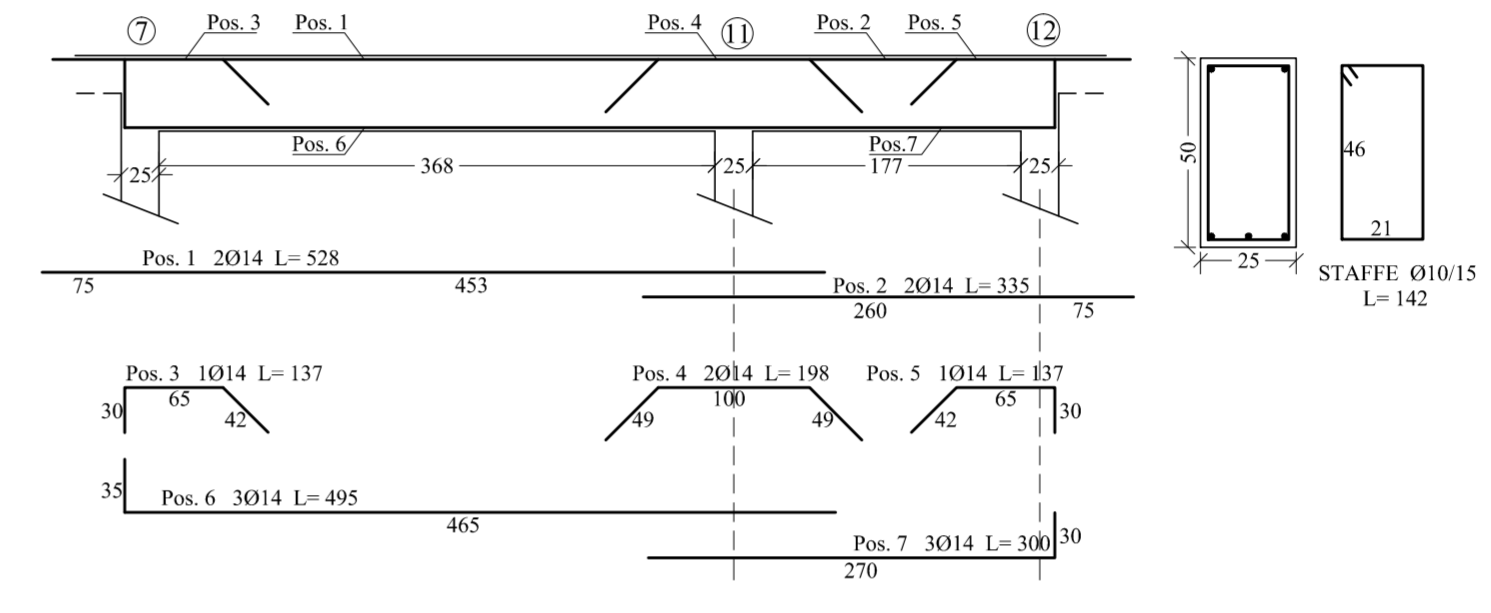
TRAVE 5 40 x 25



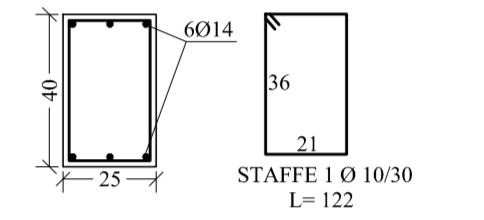
TRAVE 6 25 x 50



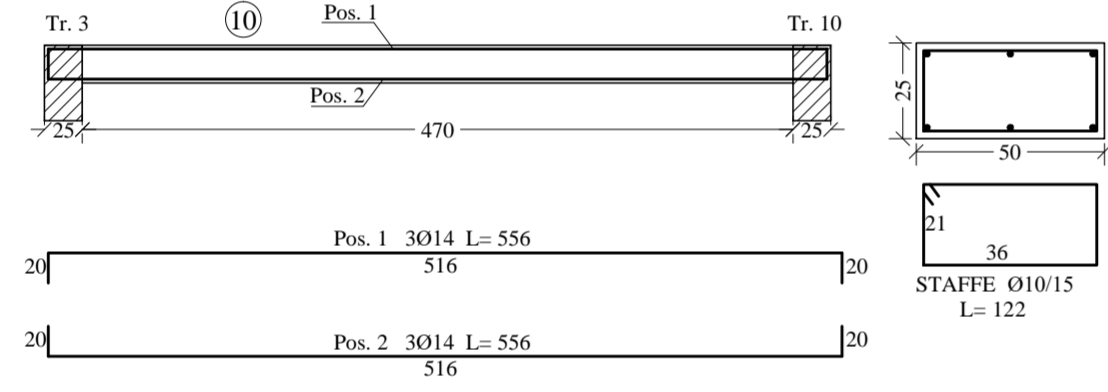
TRAVE 7 25 x 50



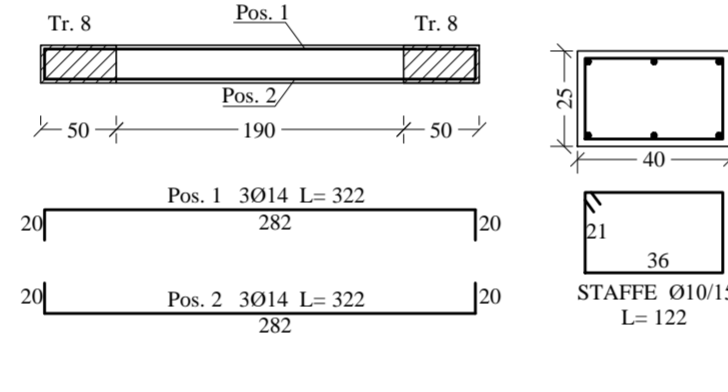
CORDOLO



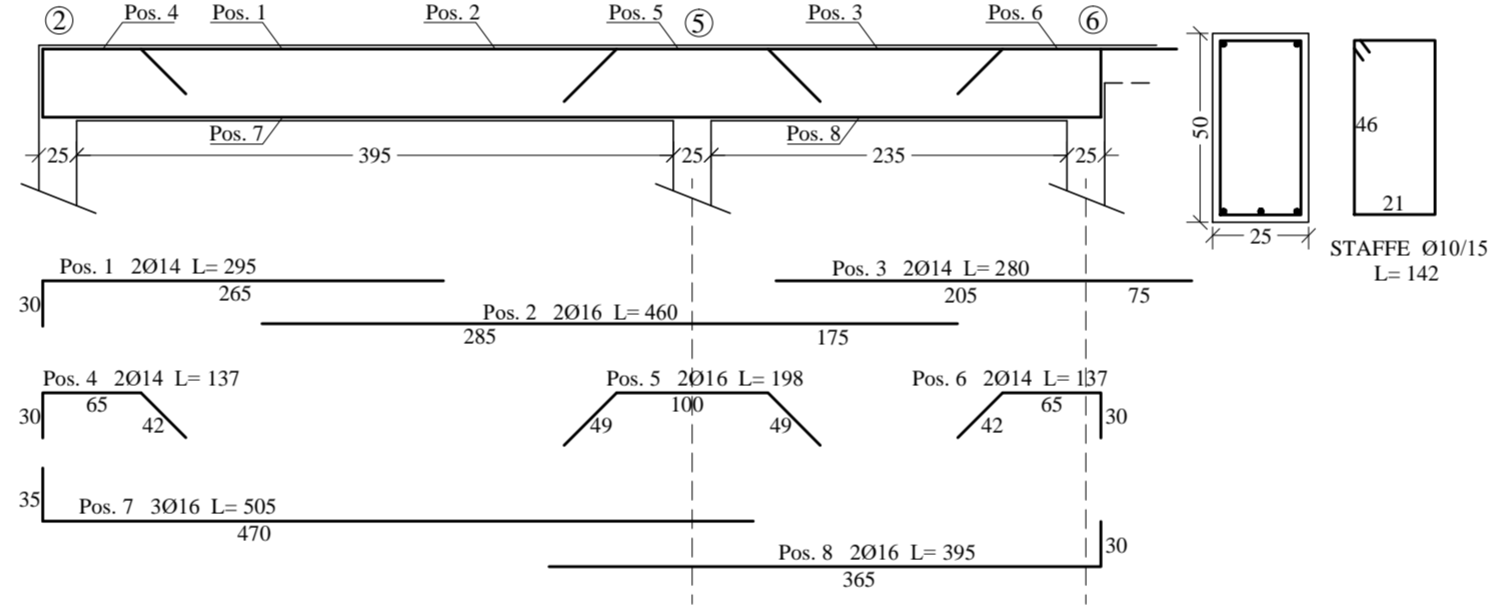
TRAVE 8 50 x 25



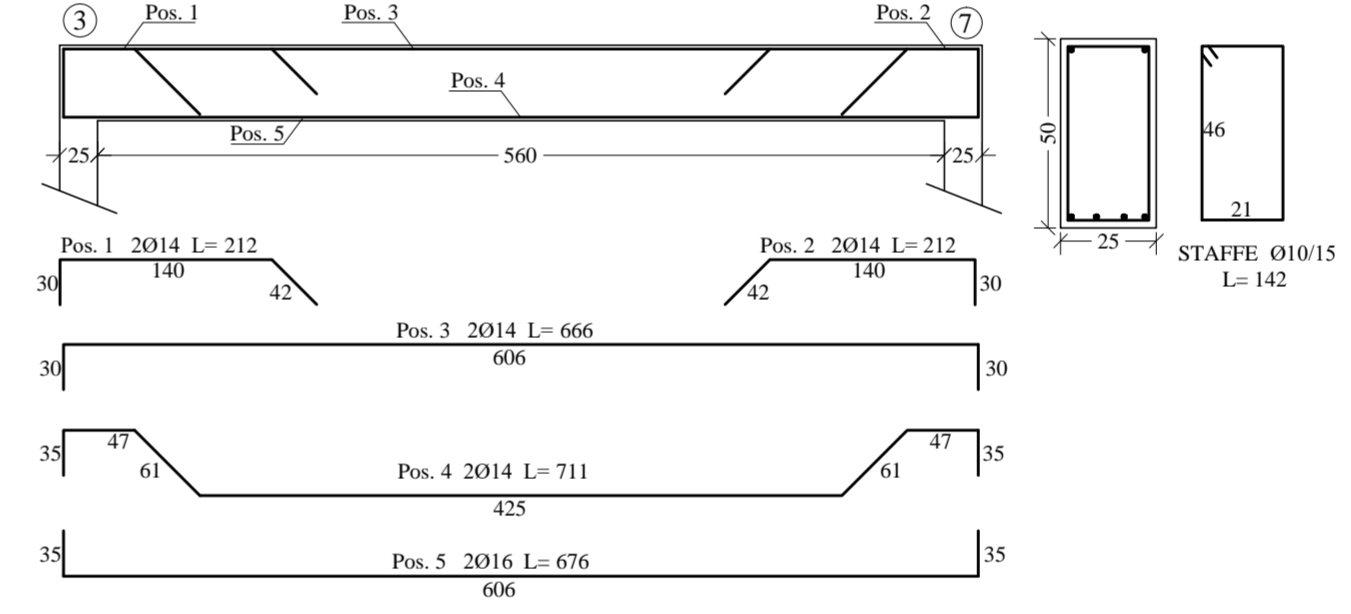
TRAVE 9 40 x 25



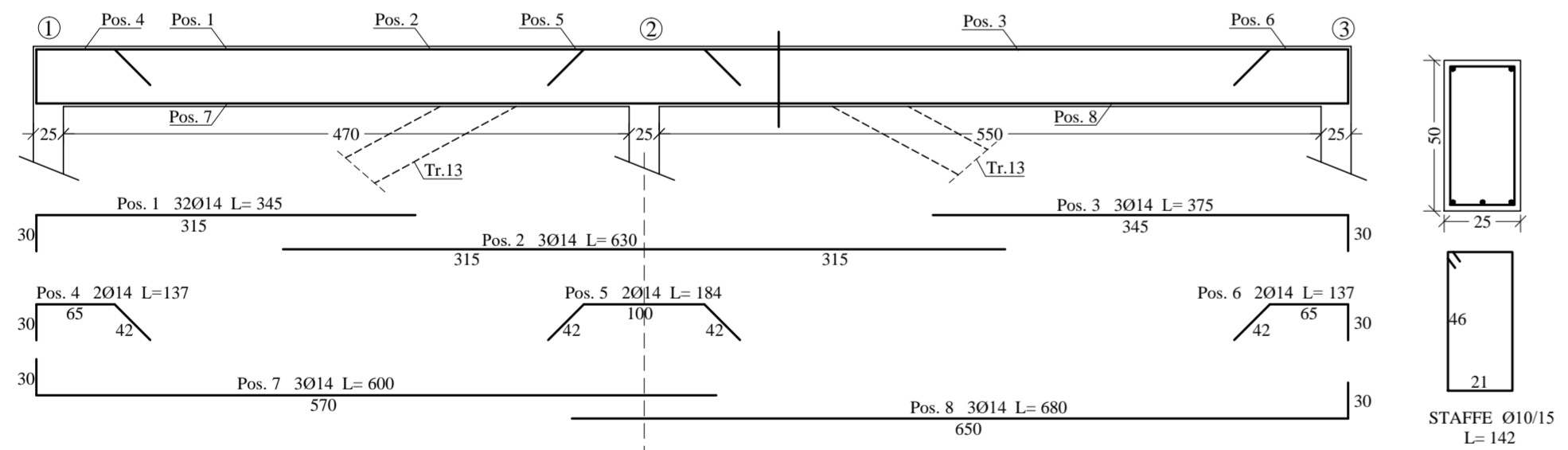
TRAVE 10 25 x 50



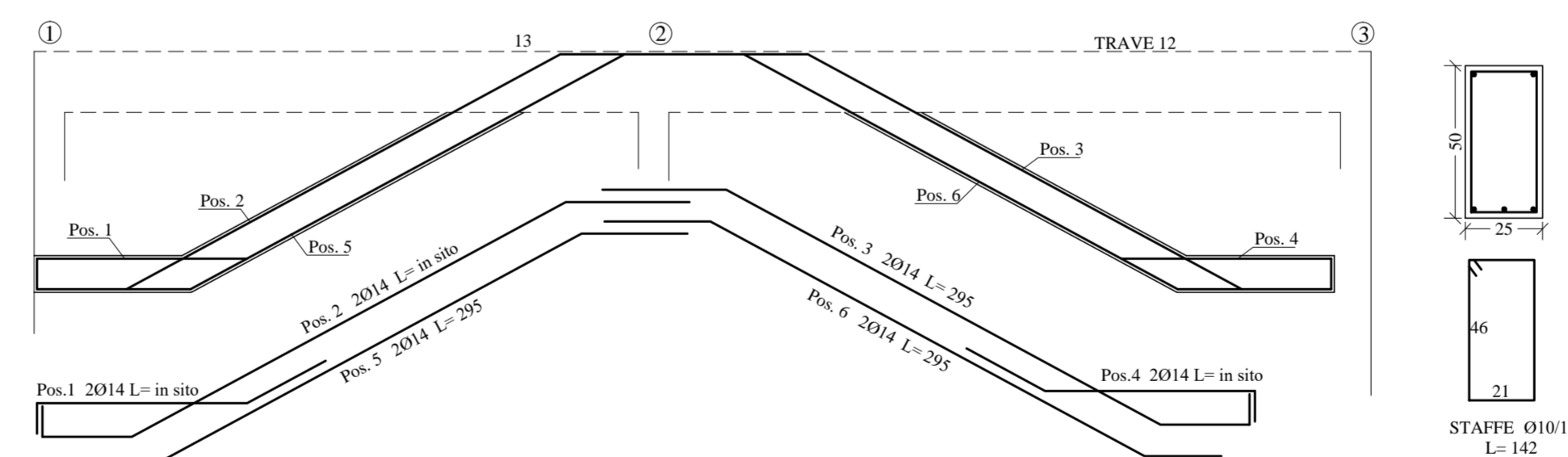
TRAVE 11 25 x 50



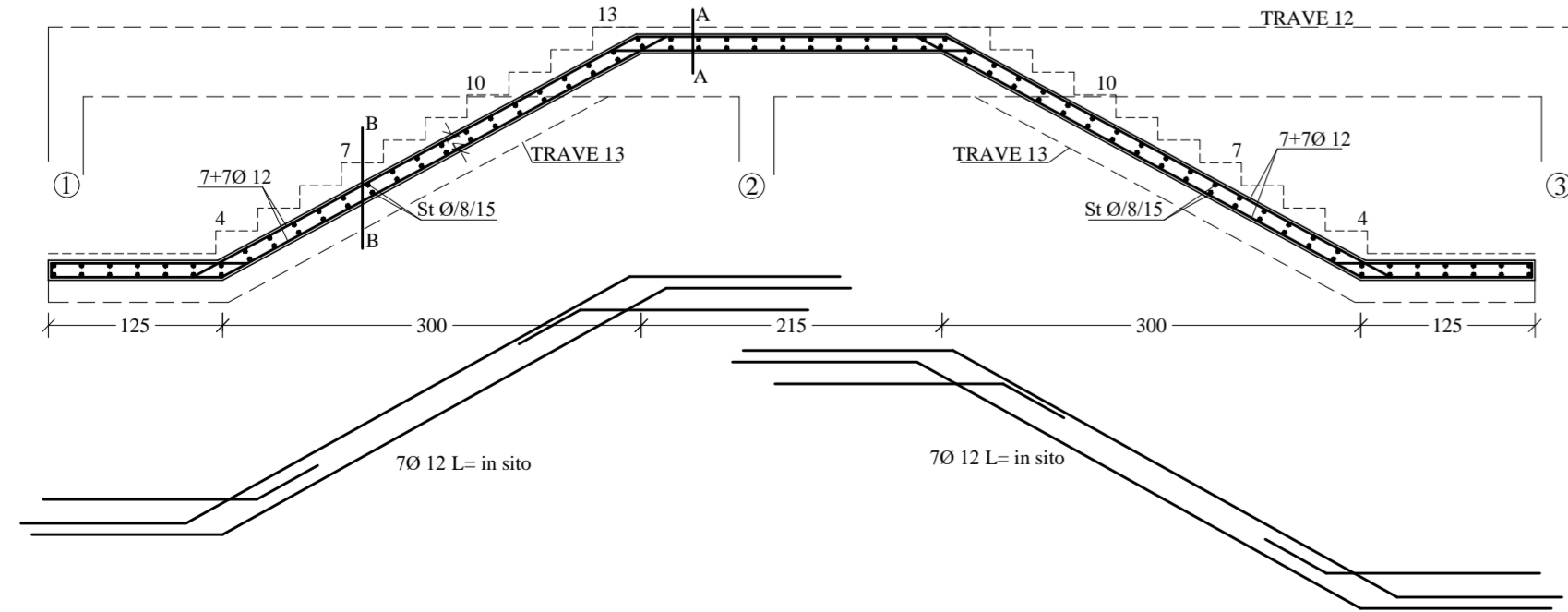
TRAVE 12 25x 50



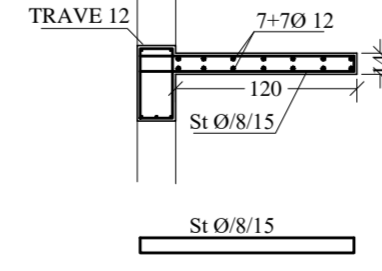
TRAVE 13 25x50



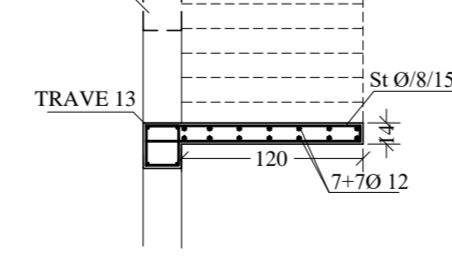
ARMATURA SCALA



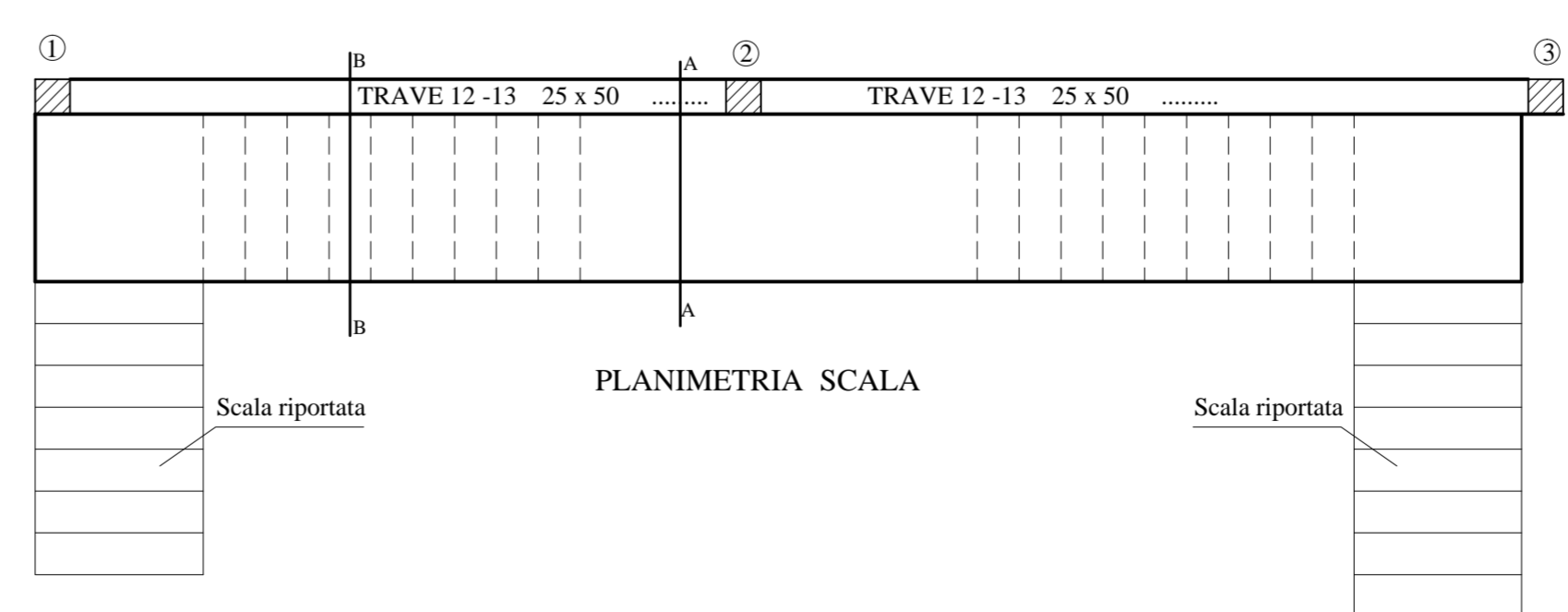
SEZIONE A-A



SEZIONE B-B



PLANIMETRIA SCALA



PROGETTO ESECUTIVO

ADEGUAMENTI ALLA DELIBERA R.A.S. N° 40 / 6 DEL 16.11.10
ESTENSIONE EFFICACIA DELLA STESSA CON DELIBERAZIONE N° 7/9 DEL 09.02.2016

COMMITENTE: MARINA DI PORTOROTONDO S.r.L. UFFICI DIREZIONE MARINA - Località PORTO ROTONDO OLBIA	
OGGETTO: "MARINA DI PORTO ROTONDO" AMPLIAMENTO MOLO DIREZIONE MARINA	
DATA: OTTOBRE 2021	RIF. N° 11/05
DESCRIZIONE: EDIFICIO DIREZIONE MARINA ARMATURA TRAVI 1° SOLAIO ARMATURA SCALA	

STUDIO TECNICO ZANNINI & GUAGLIUMI DEL DOTT. ING. GIORDANO GUAGLIUMI VICO PAIS 4A 07020 GOLFO ARANGI (SS)	
DATA: OTTOBRE 2021 RIF. N° 11/05	
TAVOLA N° 11	