

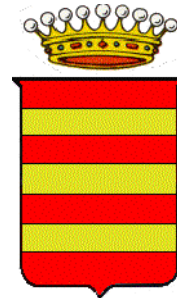
REGIONE SICILIA



CASTRONOVO DI SICILIA



LERCARA FRIDDI



ND-THREE s.r.l. sede legale Piazza Europa 14
87100 cosenza

Titolo del Progetto:

PROGETTO PER LA REALIZZAZIONE E L'ESERCIZIO DI UN PARCO AGRIVOLTAICO E DELLE OPERE CONNESSE DENOMINATO "PERCIAPERTOSA"

Documento:

PROGETTO DEFINITIVO

N° Documento:

EPD0038

DISCIPLINA:

PD

TIPOLOGIA:

EPD

FORMATO:

A3

Elaborato:

Carte Geologiche - idrogeomorfologiche e profili geologici

FOGLIO:

1 di 1

SCALA:

1:5.000 - 1:10.000

Nome file:

-

Progettazione:



NEW DEVELOPMENTS S.r.l.
piazza Europa, 14 - 87100 Cosenza (CS)

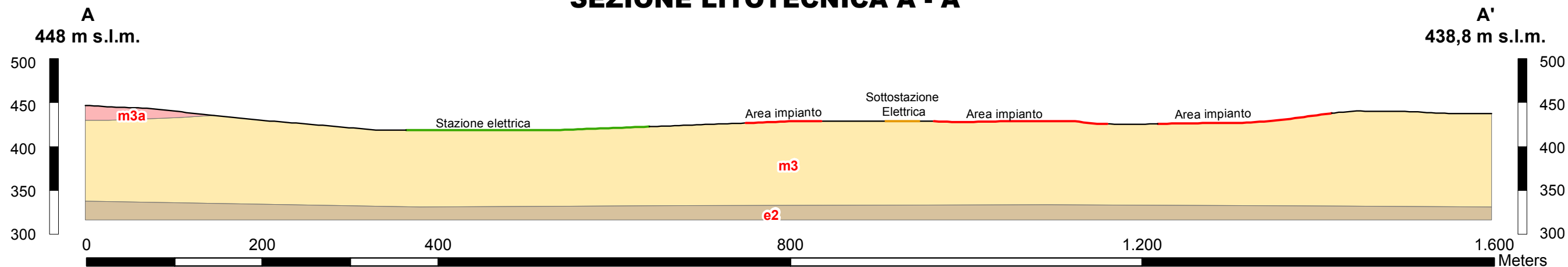
Progettisti:



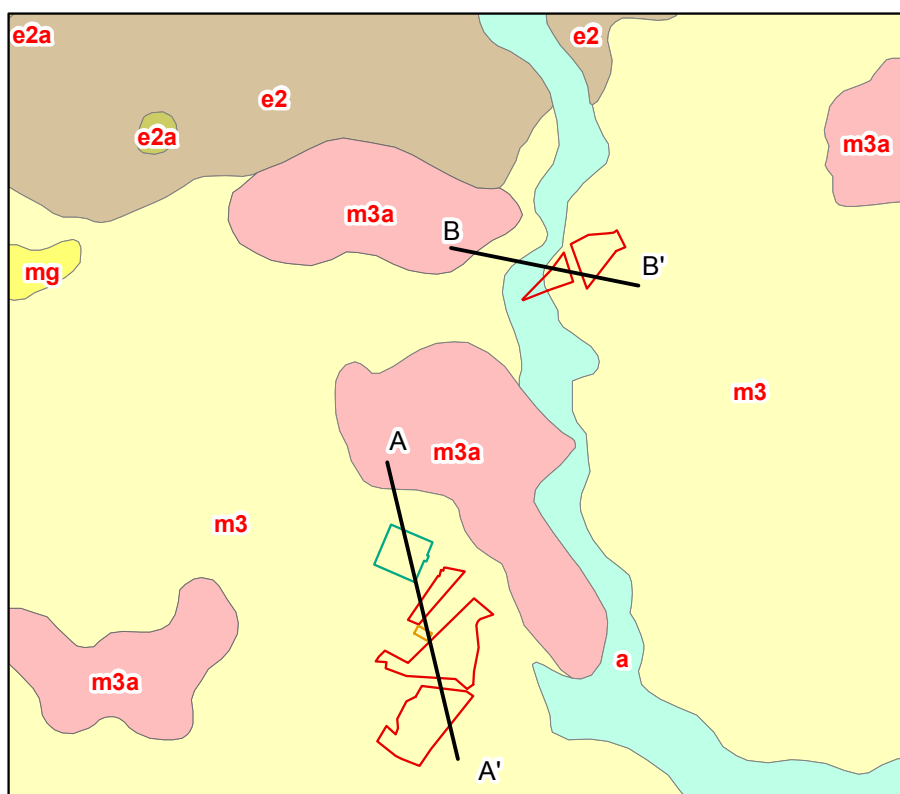
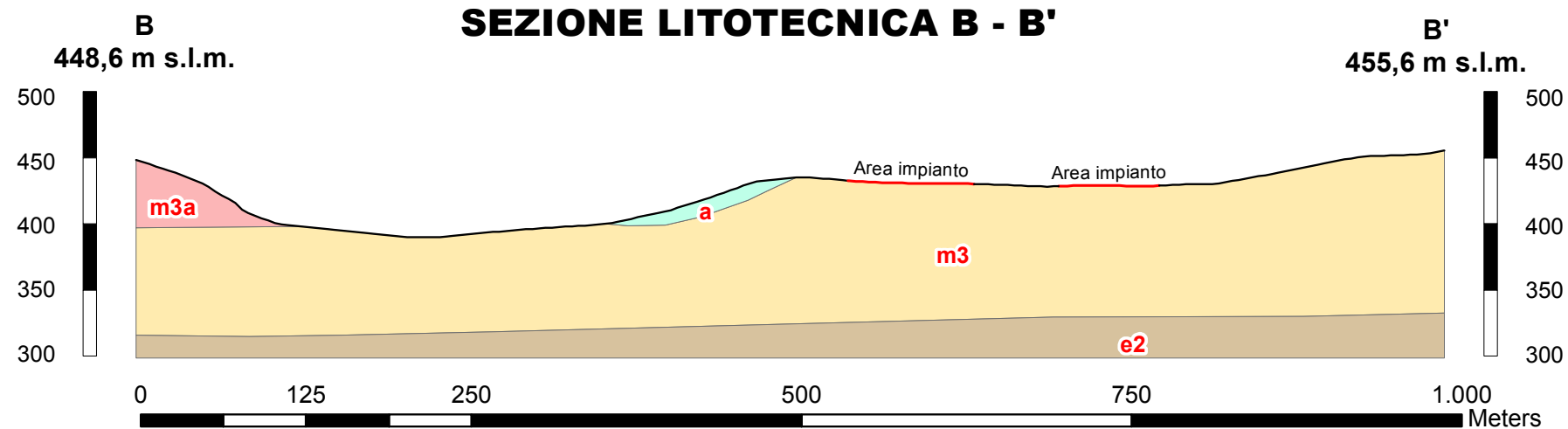
dott. geol. Eugenio Martire

Rev:	Data Revisione	Descrizione Revisione	Redatto	Controllato	Approvato
00	19/04/2022	PRIMA EMISSIONE	New Dev.	New Dev.	ND-THREE

SEZIONE LITOTECNICA A - A'



SEZIONE LITOTECNICA B - B'

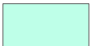

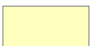



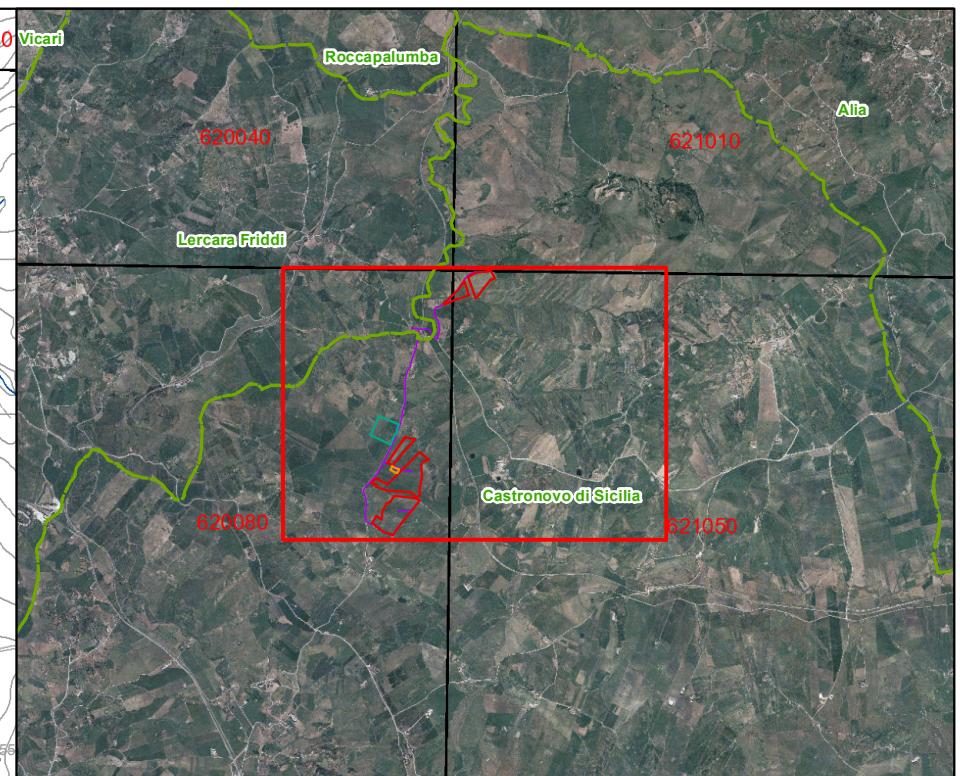
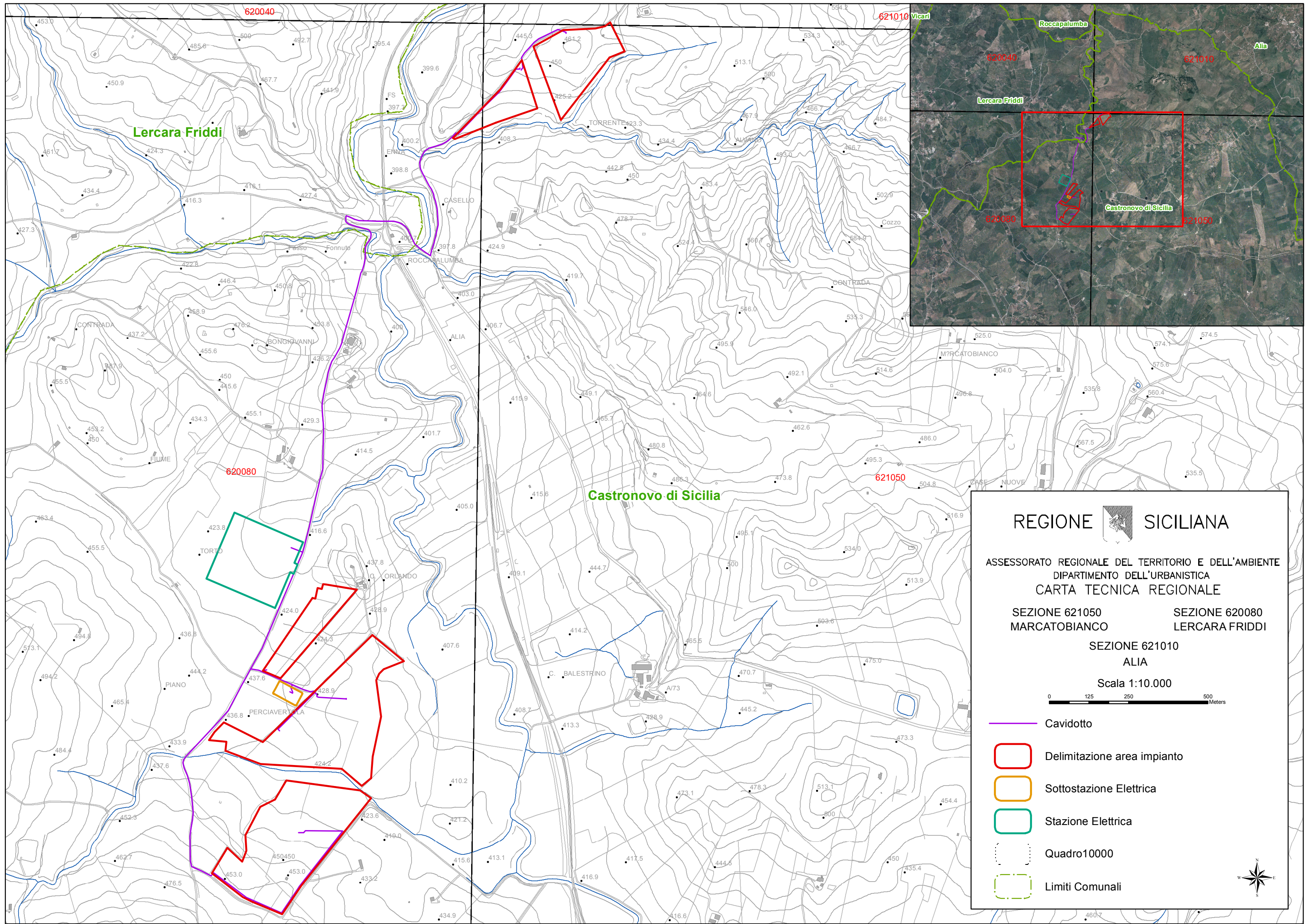
SEZIONI GEOLOGICHE

Scala 1:5.000

— Traccia sezione geologica

LITOLOGIE

- 
 a: Alluvione Sabbie , ghiaie ed argille fluviali.(Recente)
- 
 m3a: Sabbie e arenarie a grana variabile, più o meno cementate. (Miocene sup.)
- 
 m3: Argille sabbiose con lenti di salgemma e gesso in cristalli. (Miocene sup.)
- 
 e2: Argille scagliose variegata con arenarie silicee o cloritiche e con calcare. (Eocene medio)



REGIONE  SICILIANA

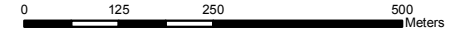
ASSESSORATO REGIONALE DEL TERRITORIO E DELL'AMBIENTE
 DIPARTIMENTO DELL'URBANISTICA
 CARTA TECNICA REGIONALE







SEZIONE 621050
 MARCATOBIANCO

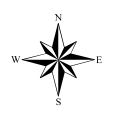
SEZIONE 620080
 LERCARA FRIDDI

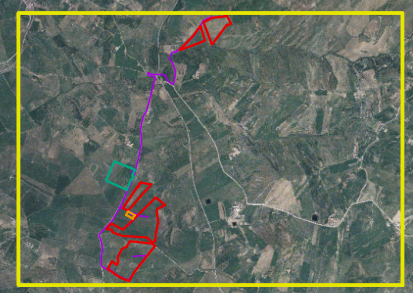
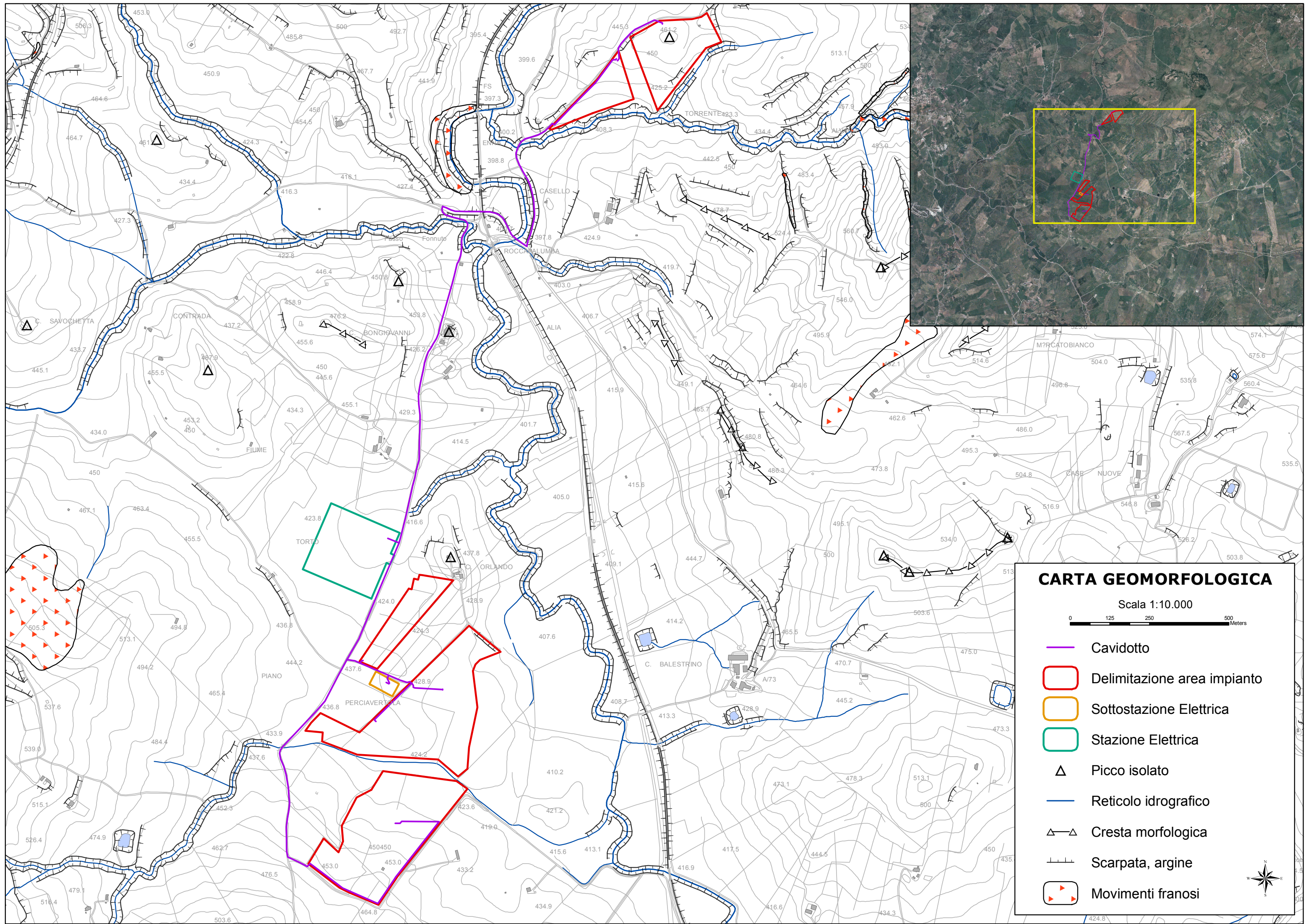
SEZIONE 621010
 ALIA

Scala 1:10.000



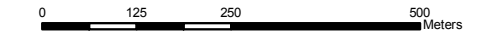
-  Cavidotto
-  Delimitazione area impianto
-  Sottostazione Elettrica
-  Stazione Elettrica
-  Quadro 10000
-  Limiti Comunali





CARTA GEOMORFOLOGICA

Scala 1:10.000

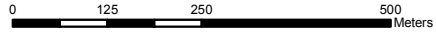


-  Cavidotto
-  Delimitazione area impianto
-  Sottostazione Elettrica
-  Stazione Elettrica
-  Picco isolato
-  Reticolo idrografico
-  Cresta morfologica
-  Scarpata, argine
-  Movimenti franosi





CARTA IDROGEOLOGICA


Scala 1:10.000

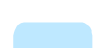



 Cavidotto

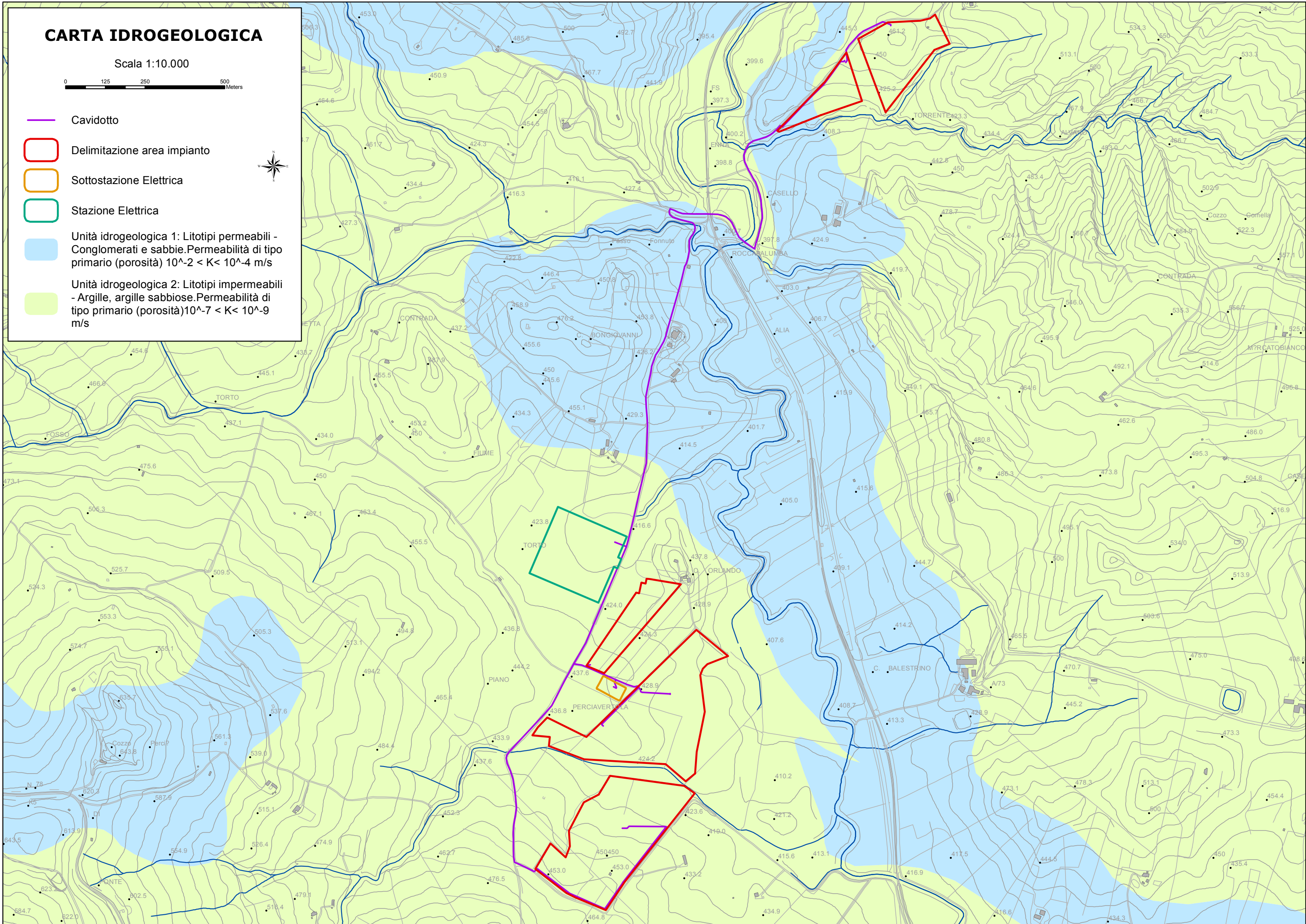
 Delimitazione area impianto

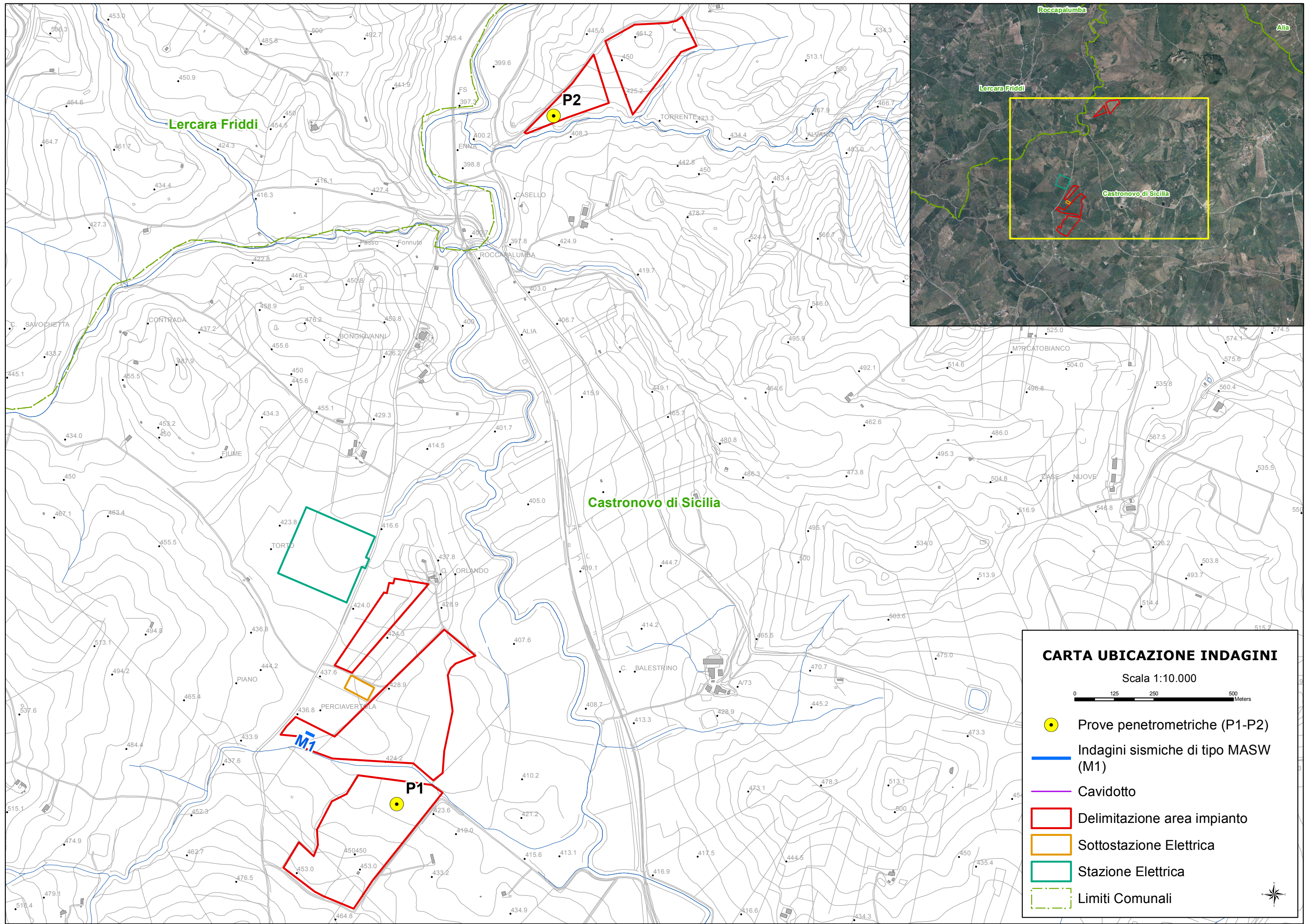
 Sottostazione Elettrica

 Stazione Elettrica

 Unità idrogeologica 1: Litotipi permeabili - Conglomerati e sabbie. Permeabilità di tipo primario (porosità) $10^{-2} < K < 10^{-4}$ m/s

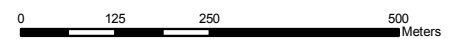
 Unità idrogeologica 2: Litotipi impermeabili - Argille, argille sabbiose. Permeabilità di tipo primario (porosità) $10^{-7} < K < 10^{-9}$ m/s












CARTA UBICAZIONE INDAGINI

Scala 1:10.000



-  Prove penetrometriche (P1-P2)
-  Indagini sismiche di tipo MASW (M1)
-  Cavidotto
-  Delimitazione area impianto
-  Sottostazione Elettrica
-  Stazione Elettrica
-  Limiti Comunali

