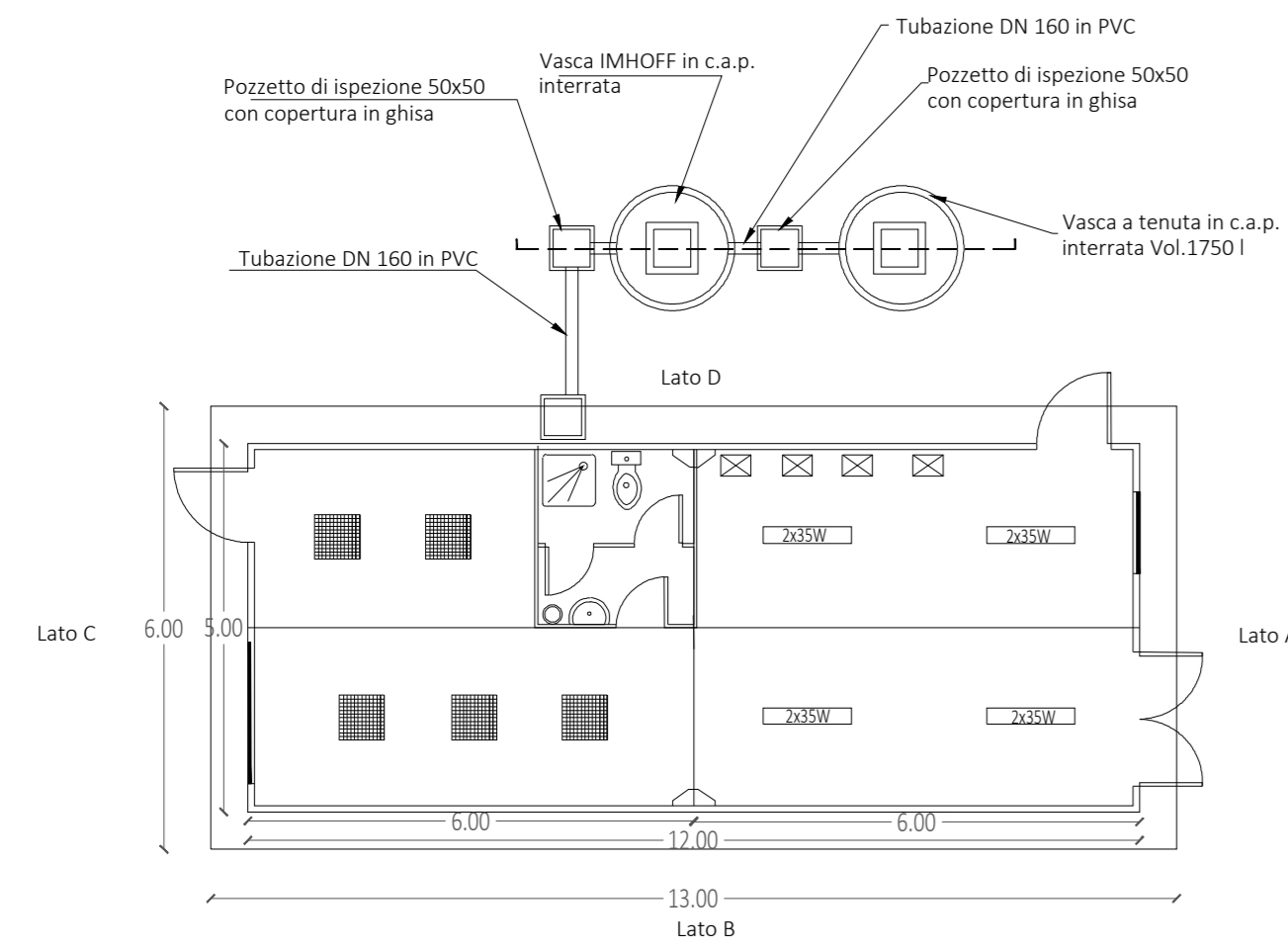


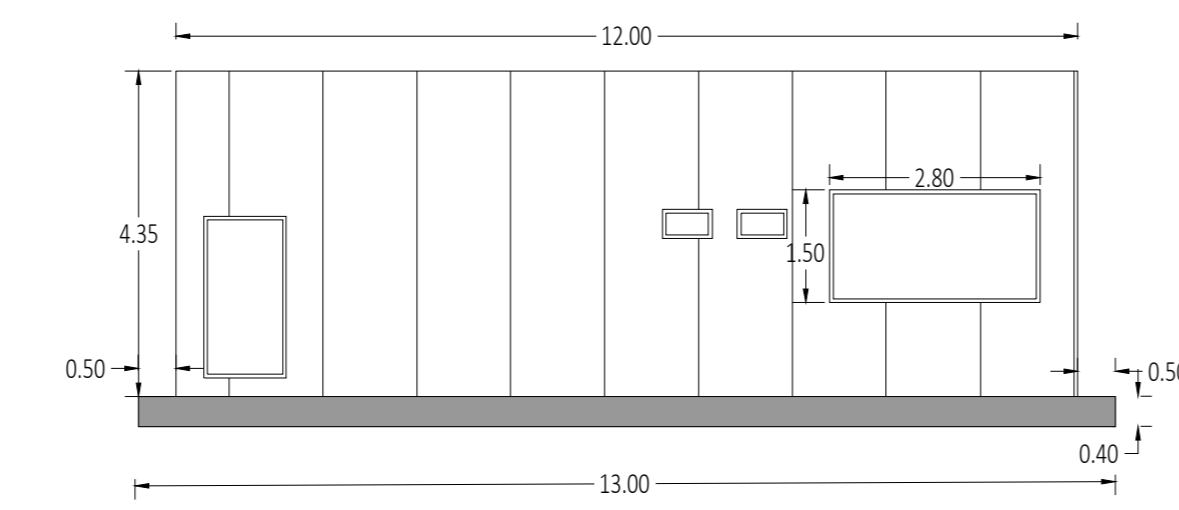
Control Room: Pianta, sezioni e dettagli costruttivi

Scala 1:100

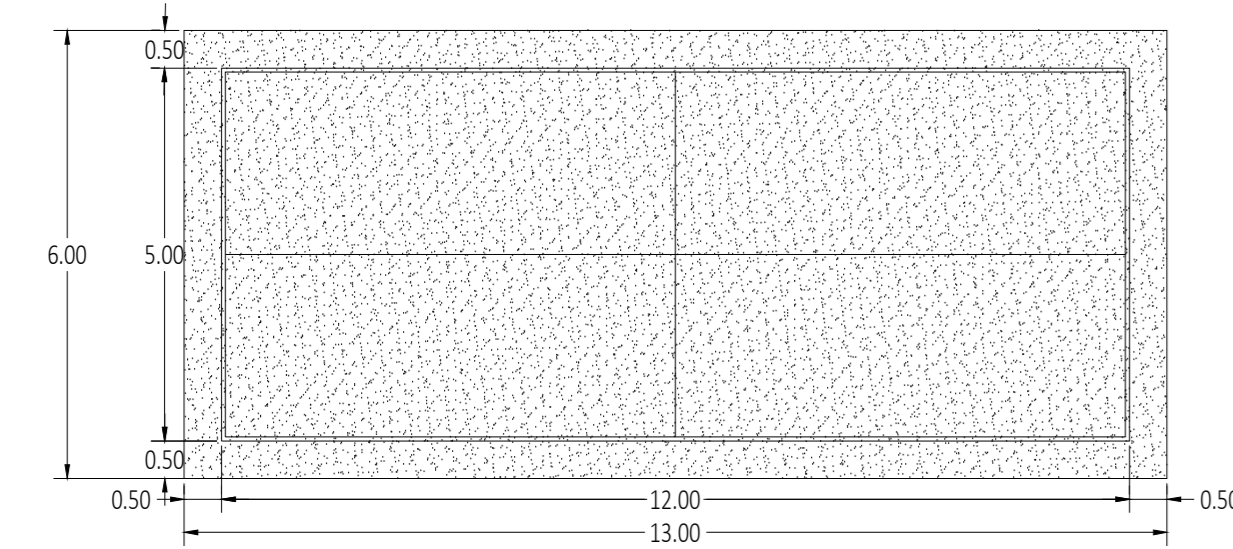
Pianta control Room



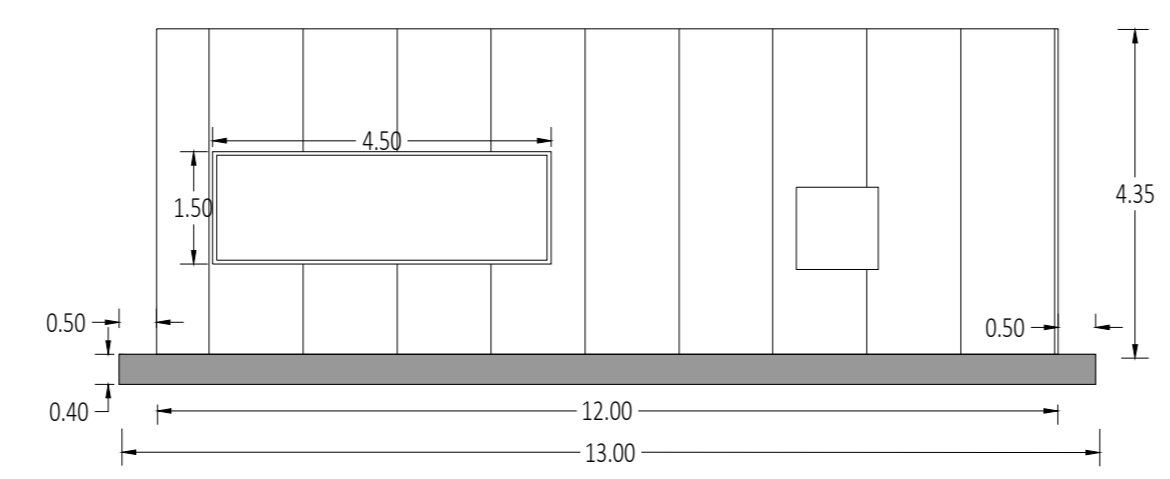
Prospetto D



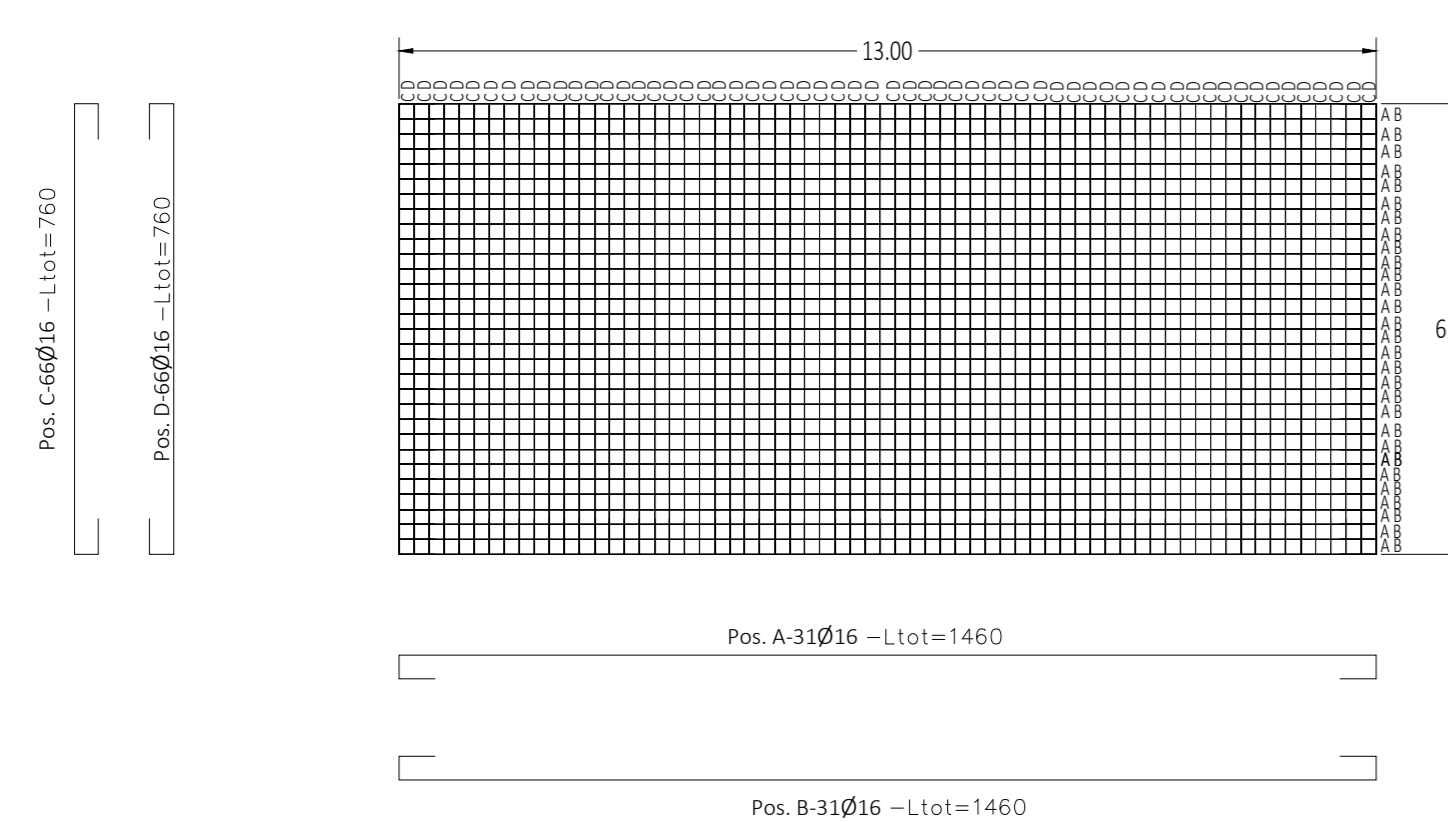
Piastrella di fondazione : Control room



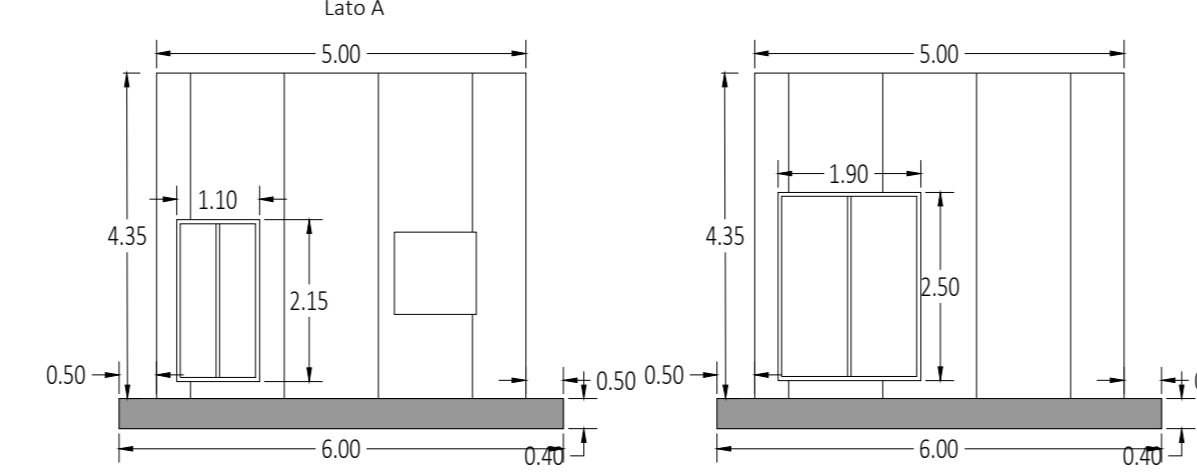
Lato B



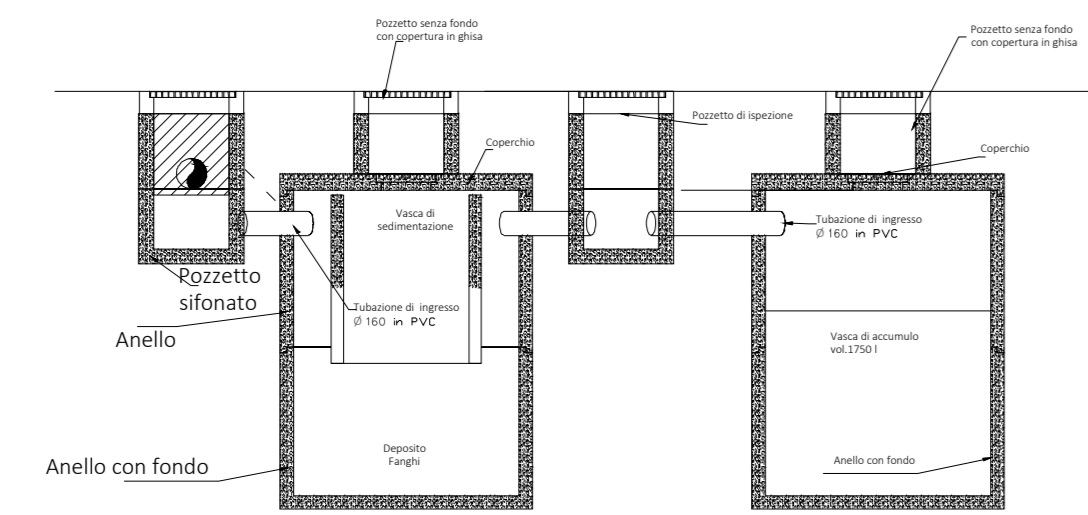
Strutturale: particolari costruttivi Armatura control room



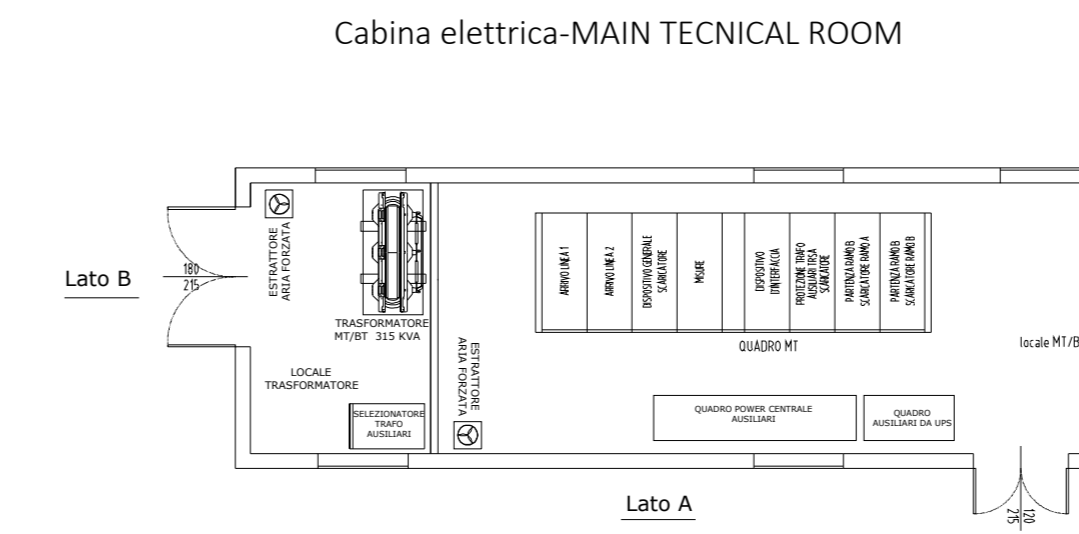
Lato C



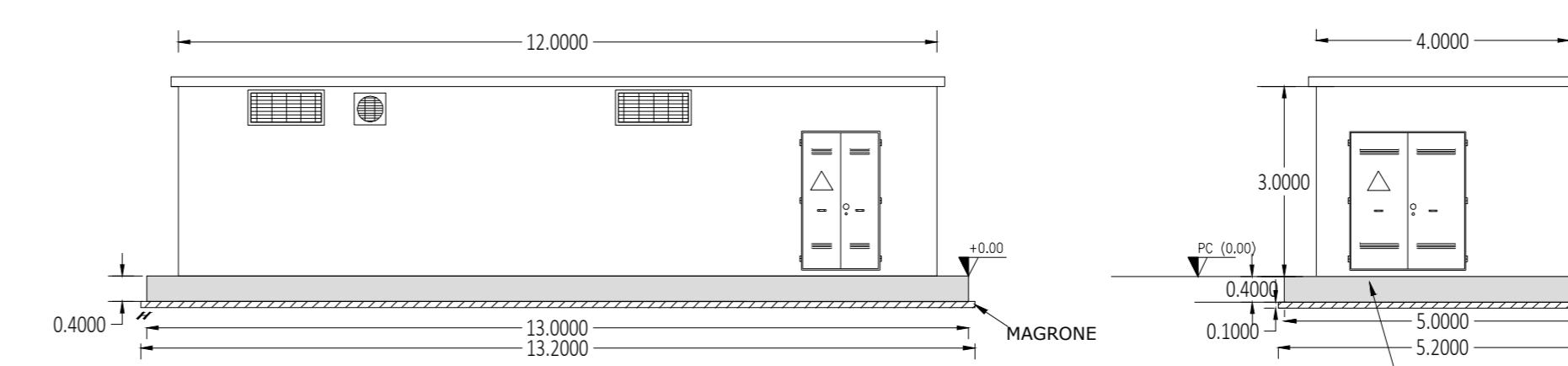
Sezione imhoff A-A
Scala:1:50



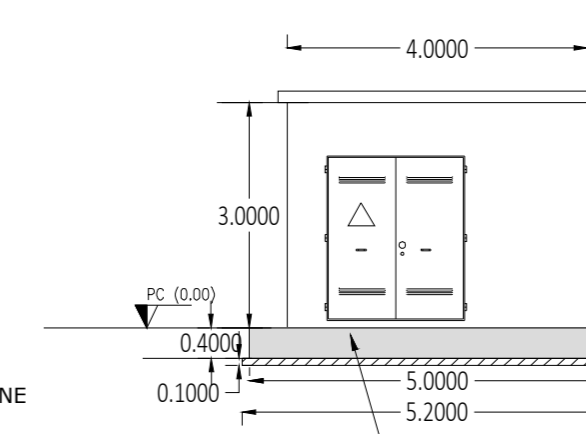
Pianta locale MTR



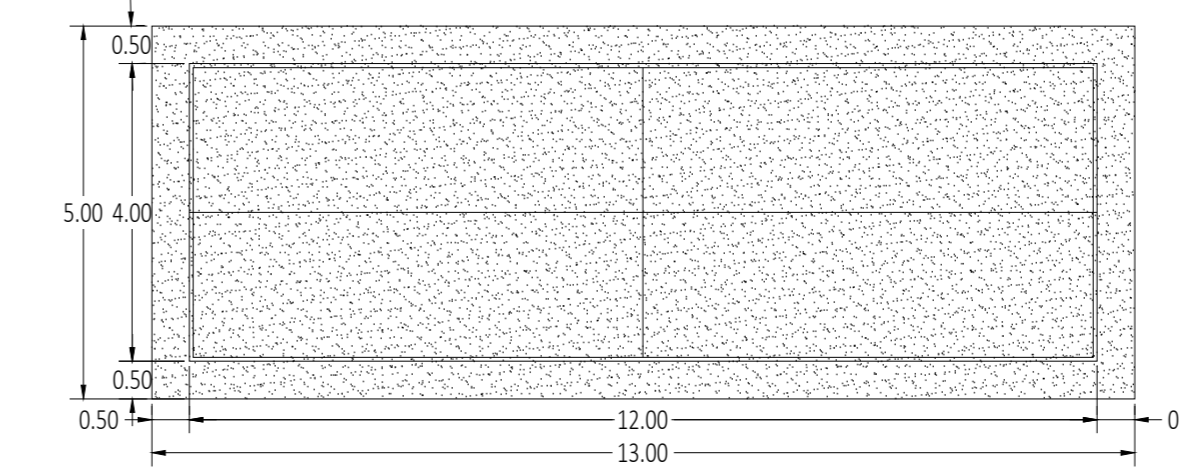
Prospetto A: MTR



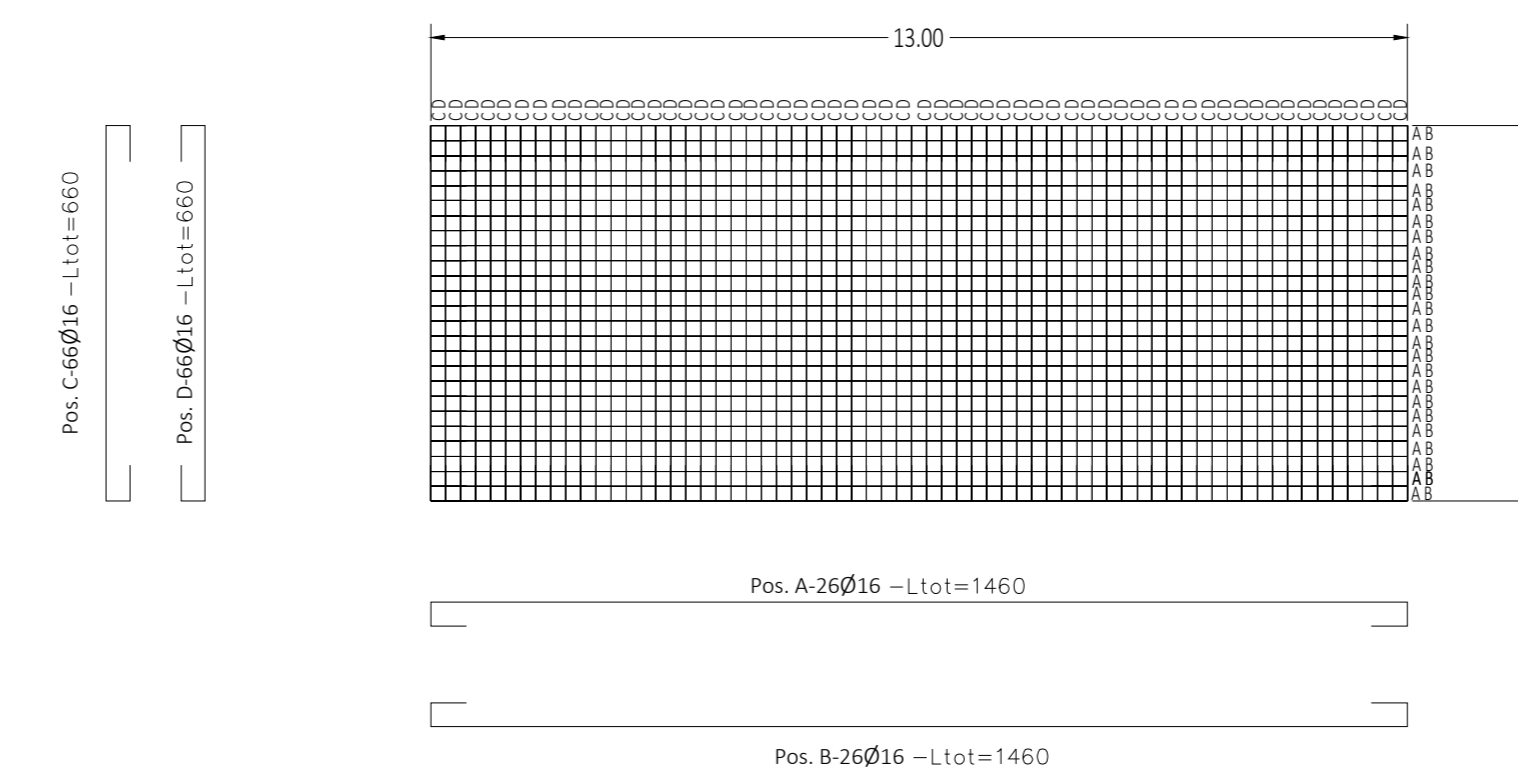
Prospetto B: MTR



Piastrella di fondazione : MTR



Strutturale: particolari costruttivi Armatura-MTR



LEGENDA

REGIONE SICILIA
PROVINCIA DI TRAPANI
COMUNI DI TRAPANI E MARSALA

AGROVOLTAICO "CUDDIA"

REVISIONI	DATA	DESCRIZIONE	ELABORATO	VERIFICATO	APPROVATO
00	25/11/2021	PRIMA EMISSIONE ELABORATO	Vincenzo Scarpino	Claudio Rizzo	Claudio Rizzo

X-ELIO

IMPRESA E SERVIZI: XE-CUDDIA-MV-PD-D-3.3.3.0-IDA-R00

PROGETTO: 1/1 AD VARIE

PROGETTO DEFINITIVO
3 - GENERATORE FOTOVOLTAICO
PIANTE, SEZIONI E PARTICOLARI COSTRUTTIVI EDIFICI SERVIZI