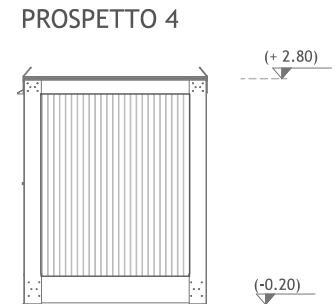
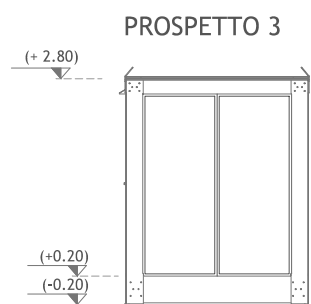
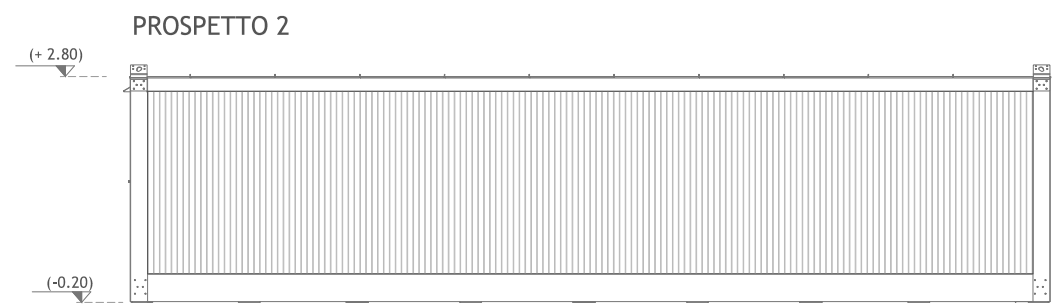
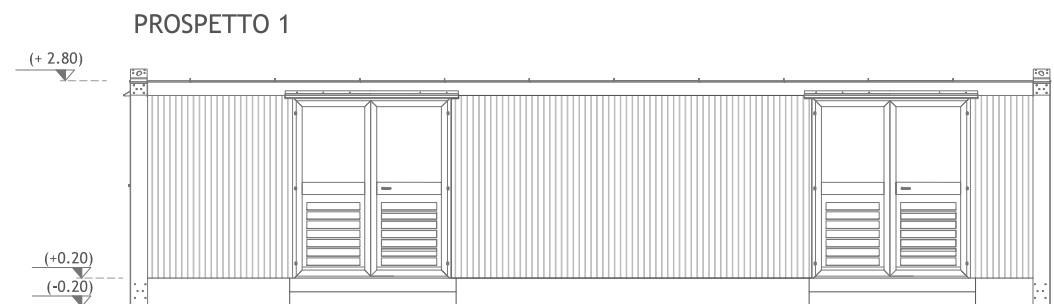
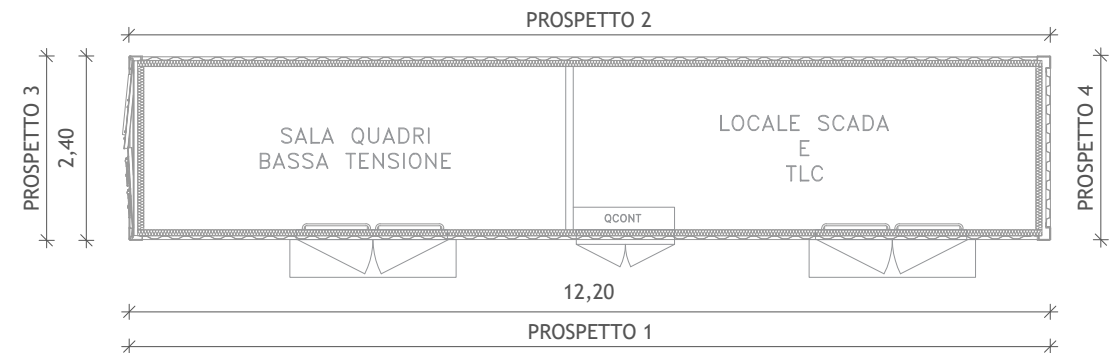
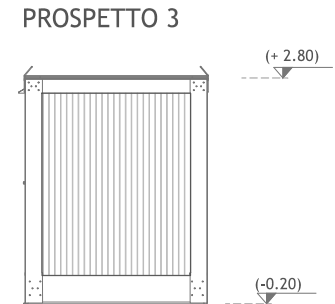
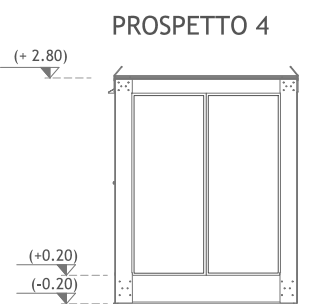
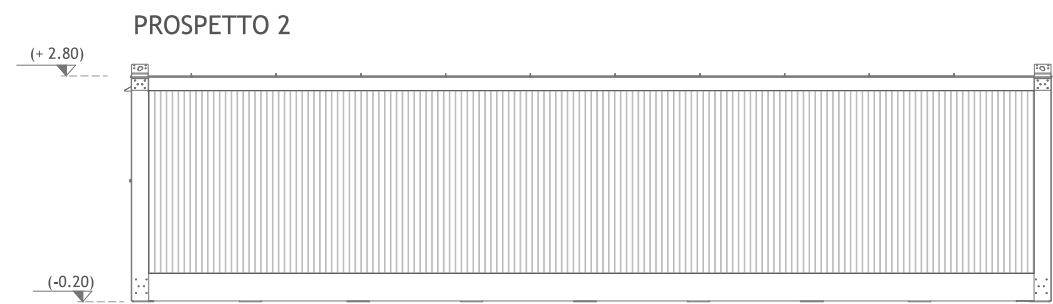
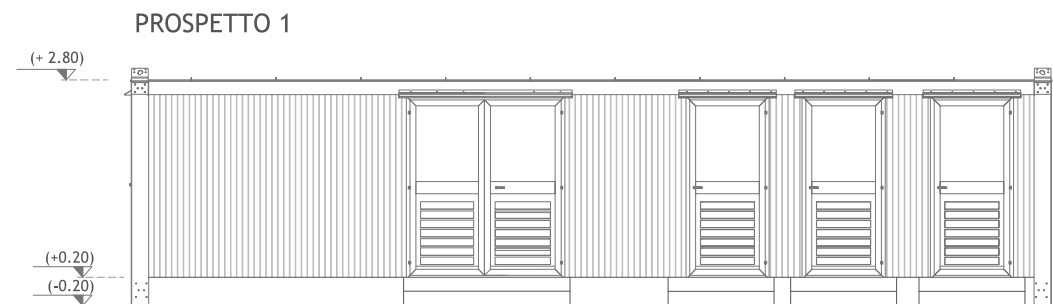
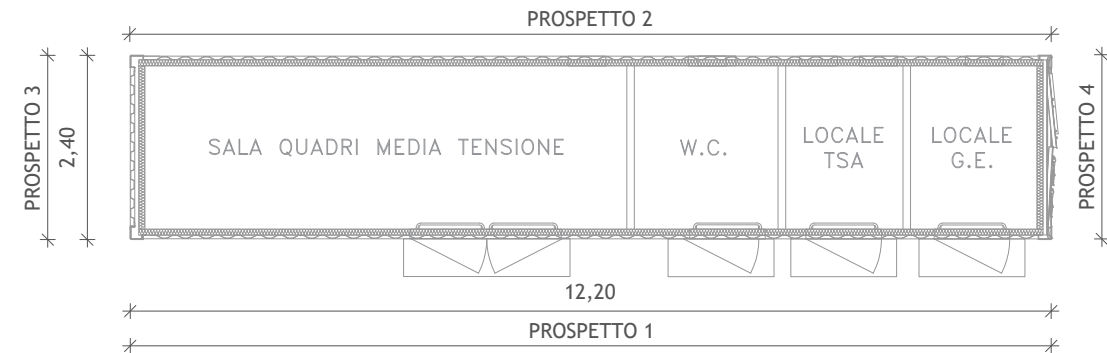


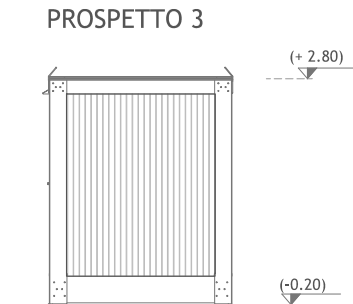
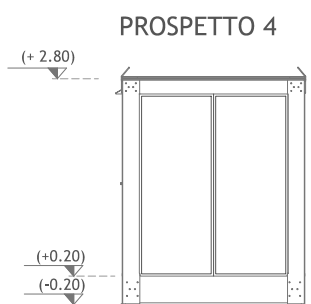
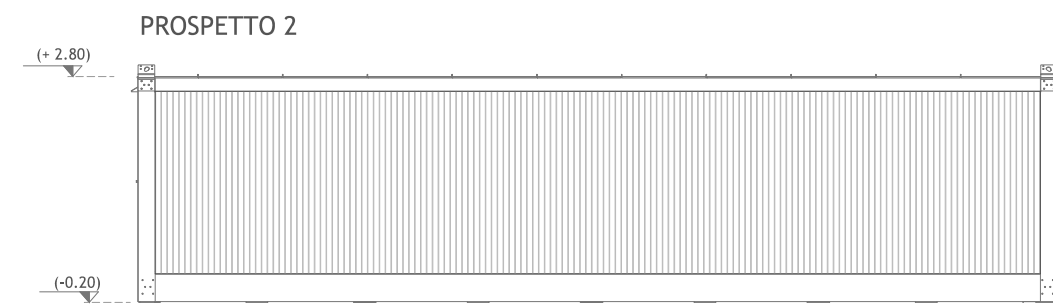
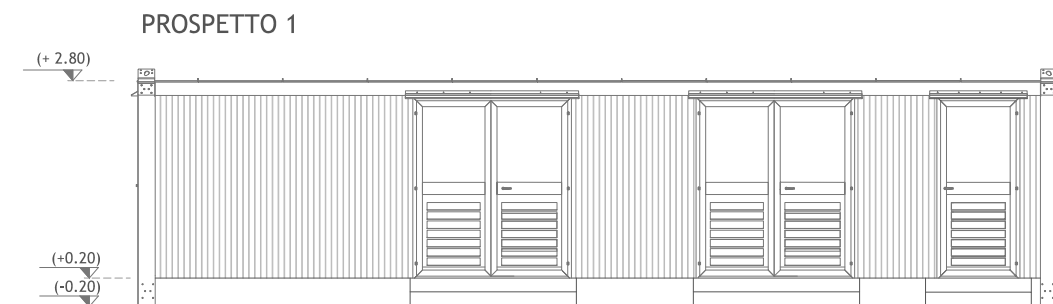
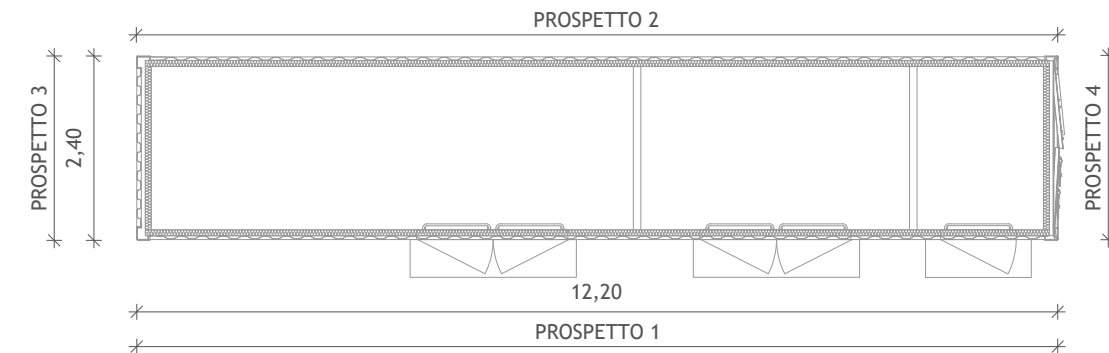
EDIFICIO BT + SCADA E TLC
Scala 1: 100



EDIFICIO QUADRI
Scala 1: 100



EDIFICIO CONTROLLO PROTEZIONE LOCALE
Scala 1: 100



Regione Campania
Provincia di Benevento
Comuni di Morcone e Pontelandolfo



Impianto per la produzione di energia elettrica da fonte eolica denominato "Colle Marco", avente potenza nominale pari a 39,6 MW, da realizzarsi nel Comune di Morcone (BN) e relative opere connesse ed infrastrutture indispensabili nei comuni di Morcone (BN) e Pontelandolfo (BN)

Titolo
STAZIONE ELETTRICA DI UTENZA - DISEGNI ARCHITETTONICI EDIFICIO QUADRI

Scala	Formato Stampa	Numero documento
1:100	A3+	
	Foglio	Commissa
	1 di 1	2 2 4 3 0 7
		Fase
		D
		Tipo doc.
		D
		Progr. doc.
		0 2 5 6
		Rev.
		0 0

Proponente
FRI-EL
FRI-EL S.p.A.
Piazza della Rotonda 2
00186 Roma (RM)
fri-elspa@legalmail.it
P. Iva 01652230218
Cod. Fisc. 07321020153

PROGETTO DEFINITIVO

Progettazione
PROGETTO ENERGIA S.R.L.
Via Serra 6 83031 Ariano Irpino (AV)
Tel. +39 0825 891313
www.progettoenergia.biz - info@progettoenergia.biz
SERVIZI DI INGEGNERIA INTEGRATI
INTEGRATED ENGINEERING SERVICES



Rev.	Data	Descrizione revisione	Redatto	Controllato	Approvato
00	08.06.2022	EMISSIONE PER AUTORIZZAZIONE	A. CATALDO	D. LO RUSSO	M. LO RUSSO