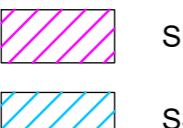
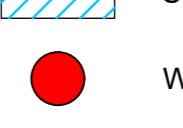

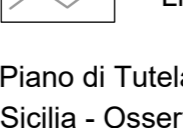
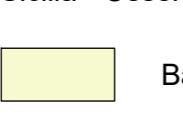



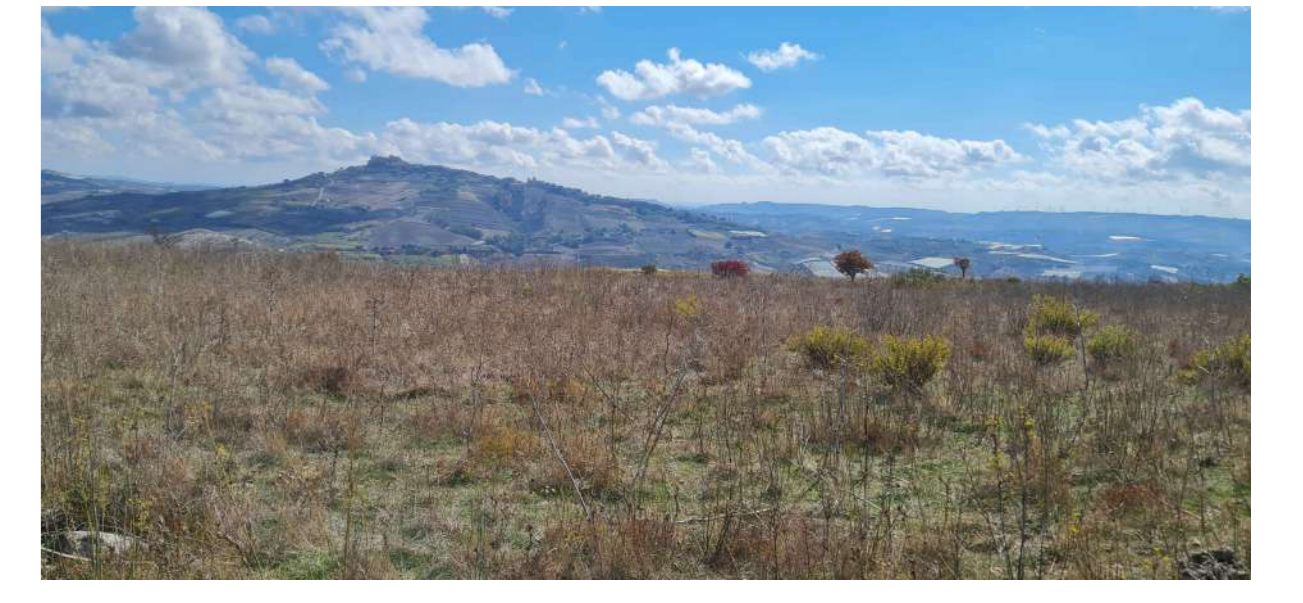


-  SET Favara
-  SSE Utenza
-  WTG Canicattì
-  Caviddotto
-  Limiti comunali
-  Bacino idrografico significativo
-  Bacino idrografico non significativo
-  Corpo idrico significativo



**COMITENTE**  
**RWE**  
 RWE RENEWABLES ITALIA S.R.L.  
 Via A. Doria, 4105 - 00192 ROMA (RM)  
 P. IVA: 01200001008  
 pec: rwe renewablesitalia@legalmail.it

**PROGETTO DEFINITIVO**      N° Documento: **PECAN-A-0072**

DI PROGETTO: **PECAN**    DISCIPLINA: **A**    TIPOLOGIA: **D**    FORMATO: **A0**

TITOLO: **Piano di tutela delle acque - Carta dei bacini idrografici significativi**

FOGLIO:      SCALA: 1:20.000      FILE: PECAN-A-0072.pdf

**Progetto:**  **Gruppo di lavoro:**   
 Dott. Quilifero Belmonte (coordinatore)  
 Dott.ssa Maria Antonietta Marino (Direttore Tecnica)  
 Ing. Mirco di Paolo  
 Dott. Sebastiano Mustone  
 Dott. Fabio Interante

Rev.	Data Revisione	Descrizione Revisione	Redatto	Controllato	Approvato
00	maggio/2022	PRIMA EMISSIONE	VAMIRGEOND	VAMIRGEOND	RWE