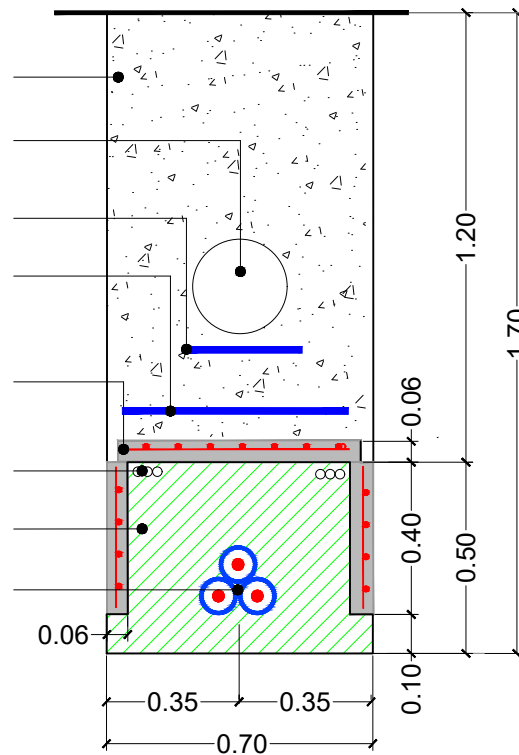
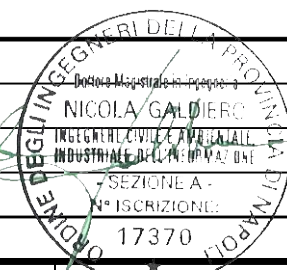


PARTICOLARE 1.a
Risoluzione interferenza tra
condotta irrigua e cavidotto AT
POSA IN TERRENO AGRICOLO

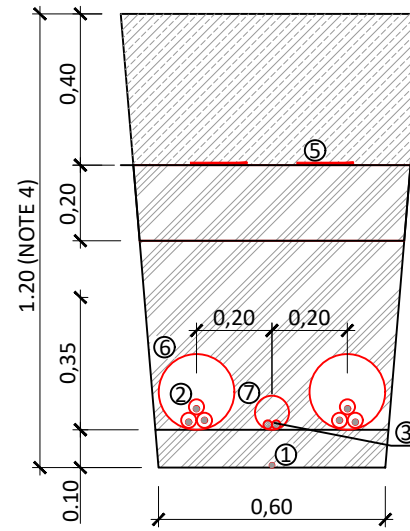
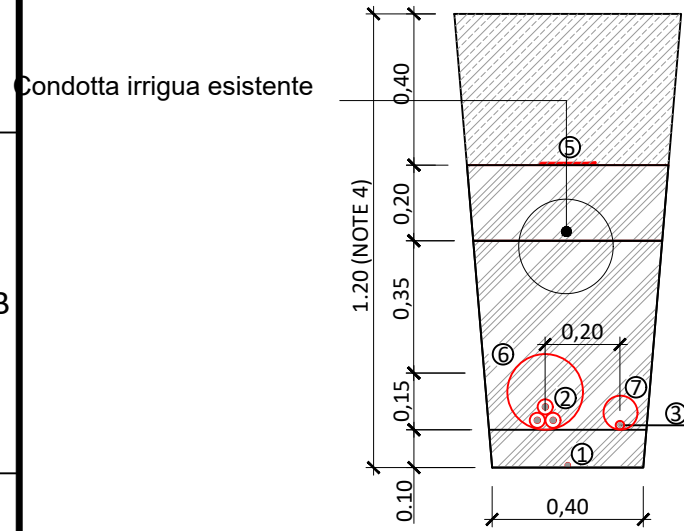
- Materiale inerte o altro materiale idoneo
- Condotta irrigua esistente
- Nastro monitor in pvc
- Rete in pvc
- Piastre di protezione in c.a.v. ux lk20/2 e ux lk20/3
- Tritubo
- Cemento Magro UX LK50
- Cavo XLPE



D						DATE	SCALE 1/20	RePlus S.r.l.	INSE S.R.L.
C						DRAWN	INSE		CAD Vers.: B
B	28/02/2022	INSE Srl	INSE Srl			02/22	CHECKED	Parco eolico Campomarino	
A	10/05/2020	INSE Srl	INSE Srl			05/20	REVISED-EDPR	SEZIONI TIPOLOGICHE POSA CAVI AT - 150 kv E MT 30 kv	
EDIC.	DATE	DRAWN	CHECKED	REVISED-EDPR	MODIFICATION		Format A3	Regione Molise - Comune di Campomarino (CB)	

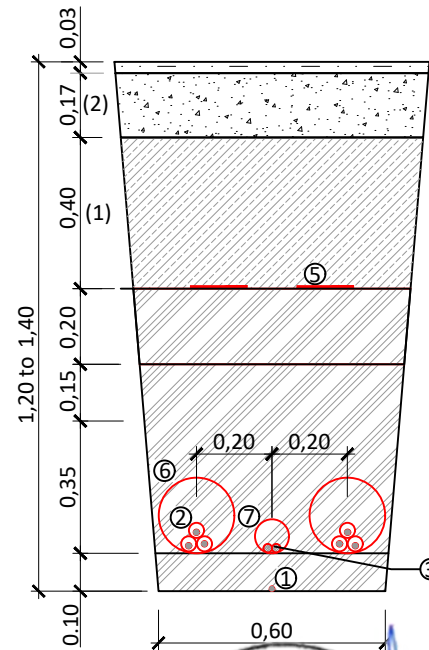
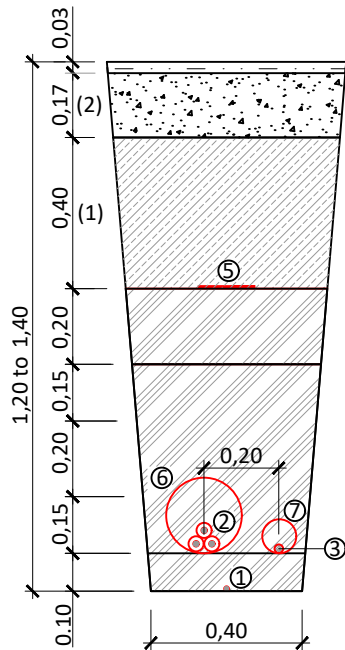


CAVO 30 kV POSA IN TERRENO AGRICOLA



LEGEND	
	Washed river sand (Protective bedding soil)
	Selected material, manually compacted (Backfill material)
	Selected material, mechanically compacted (Backfill material)
	Concrete C15
	Asphalt
①	Earth wire
②	MV Power Cables
③	Communication cable F.O.
④	Prefabricated tiles for mechanical protection
⑤	Warning tape 200mm (Yellow)
⑥	HDPE corrugated double wall pipe SN8 Ø200mm
⑦	HDPE smooth pipe SRD11 Ø90mm

CAVO 30 kV POSA SU STRADA ASFALTATA



D					DATE	SCALE 1/20	RePlus S.r.l.	INSE S.R.L.
C					DRAWN	INSE	Parco eolico Campomarino	CAD Vers.: B Page Vers.: X
B	28/02/2022	INSE Srl	INSE Srl		02/22	CHECKED INSE		Name Collection Page: 02
A	10/05/2020	INSE Srl	INSE Srl		05/20	REVISED-EDPR	SEZIONI TIPOLOGICHE POSA CAVI AT - 150 kV E MT 30 kV	Cont: 02
EDIC.	DATE	DRAWN	CHECKED	REVISED-EDPR	MODIFICATION		Format A3	CAD N°: OW320290311BW_CMOEL14

