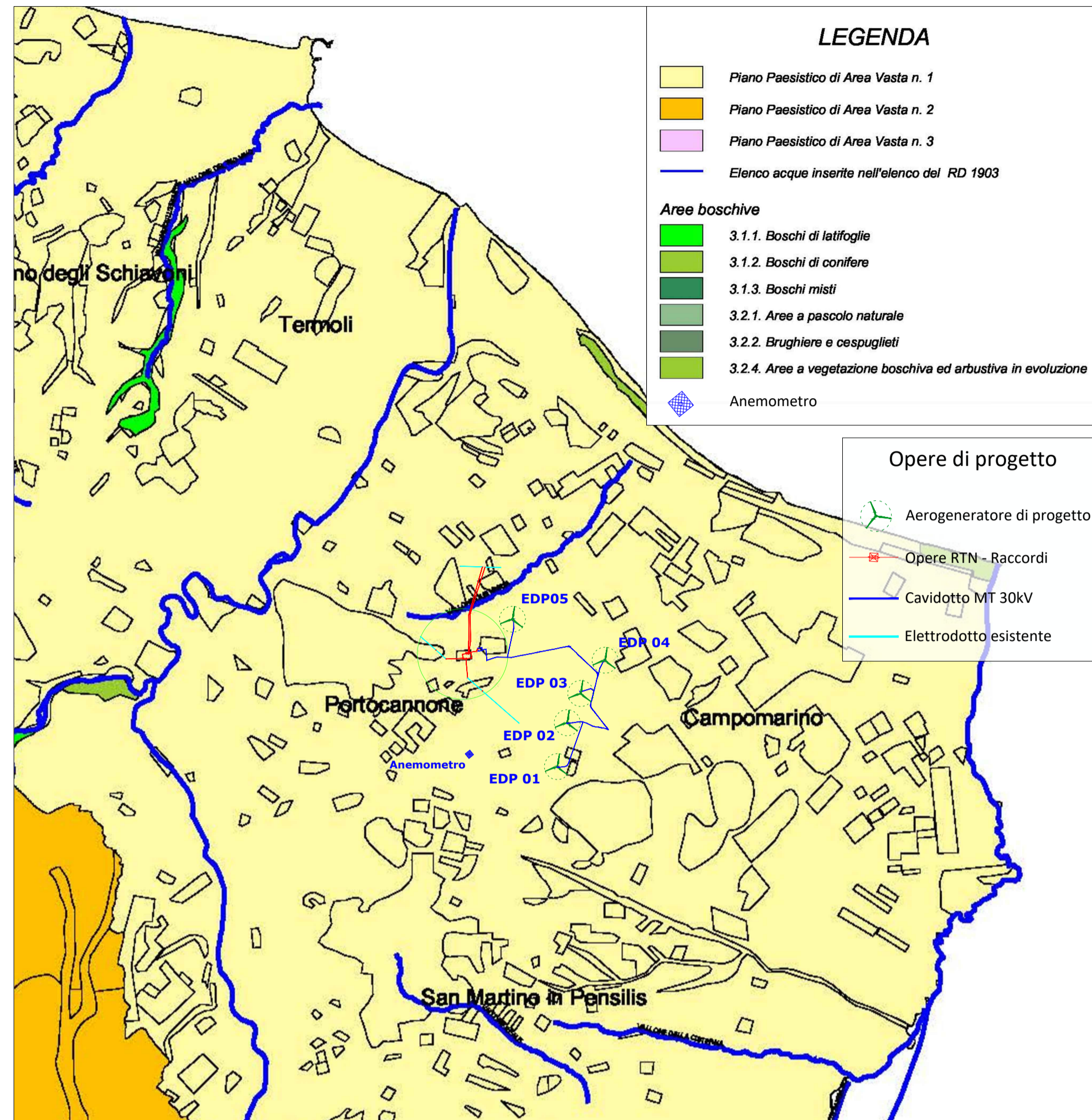


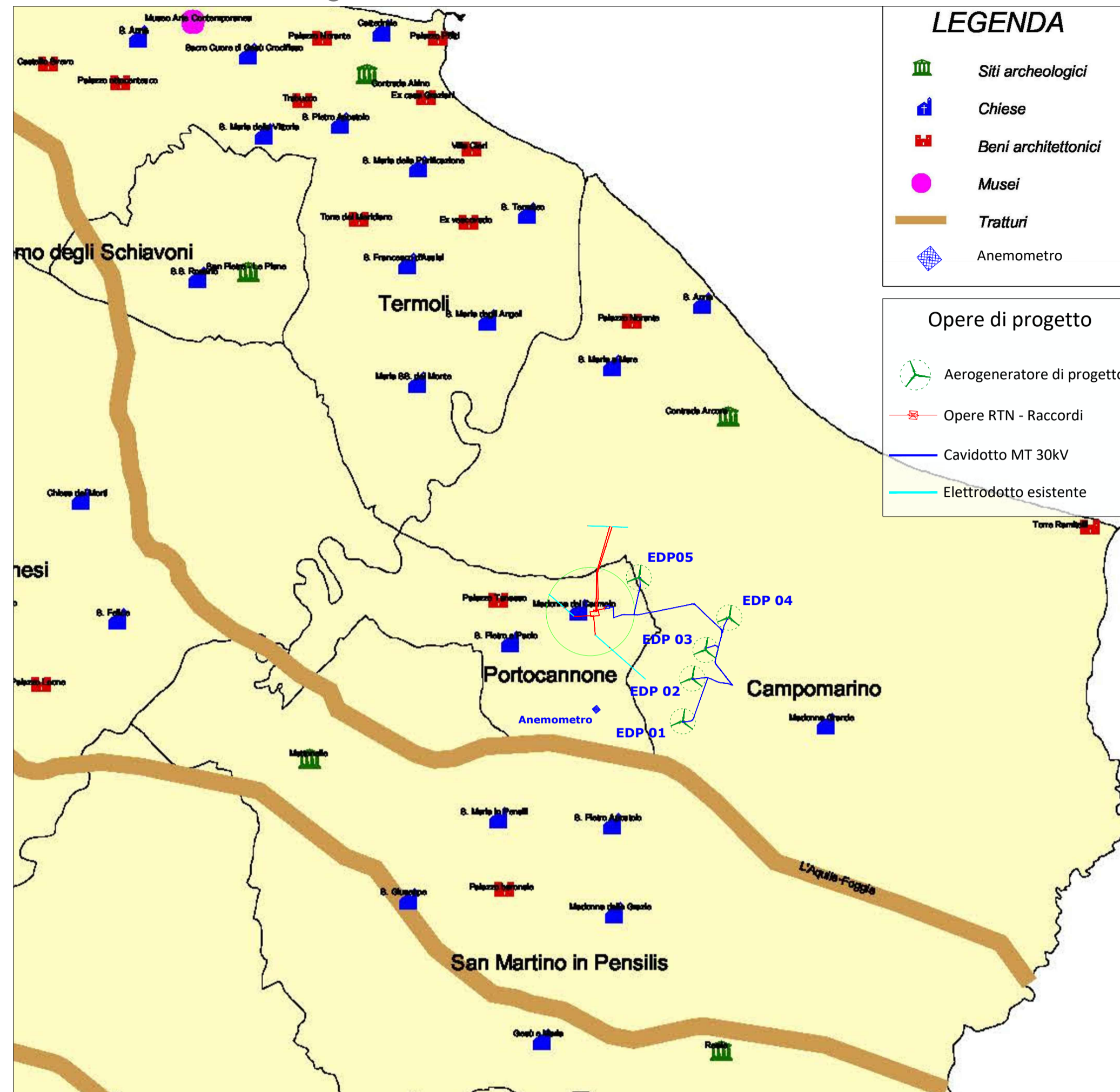
Matrice Ambientale

Tav. A - Piani Paesistici e aree boschive



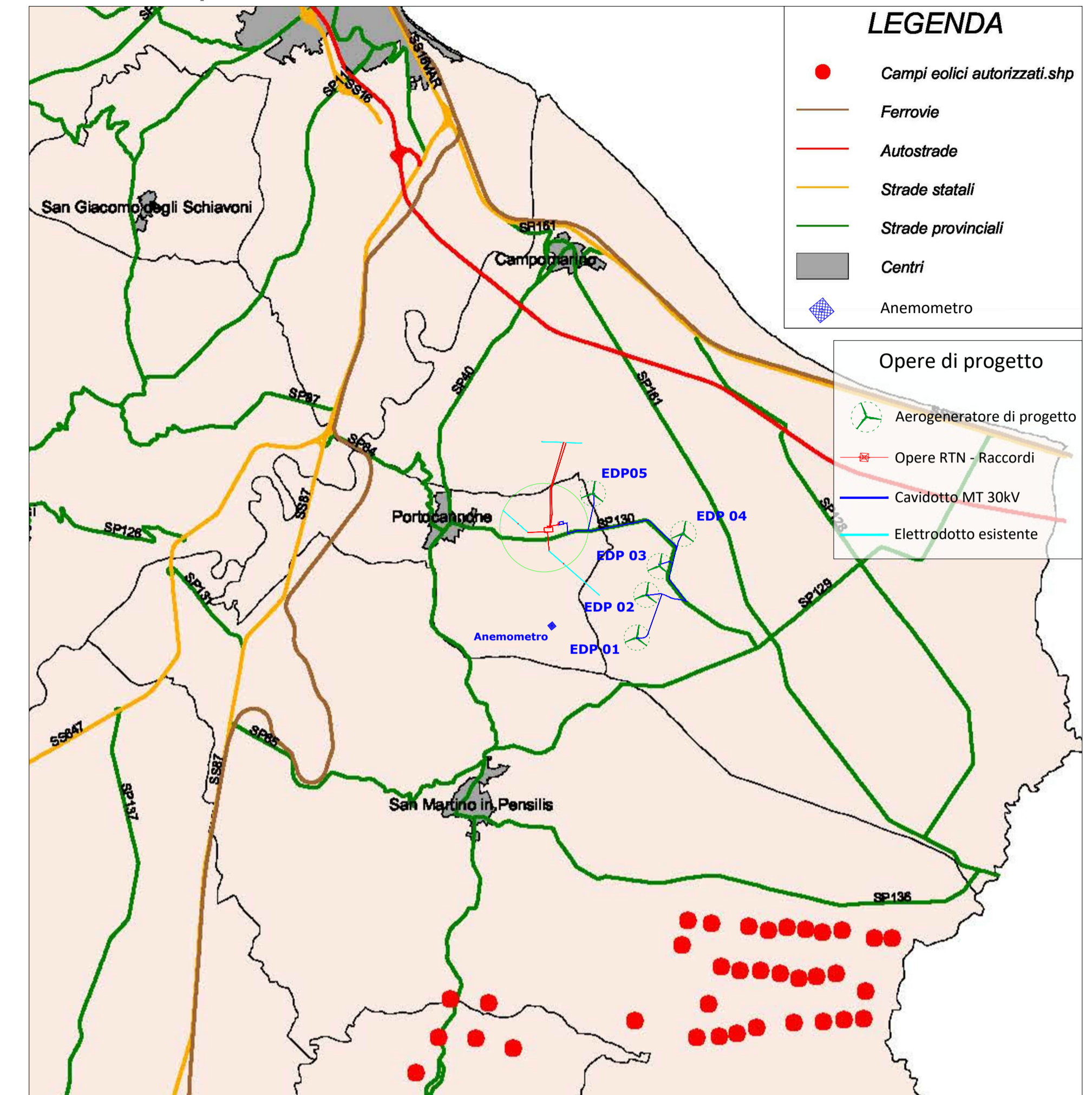
Matrice Storico - Culturale

Tav. A - Siti Archeologici, chiese, beni architettonici, tratturi



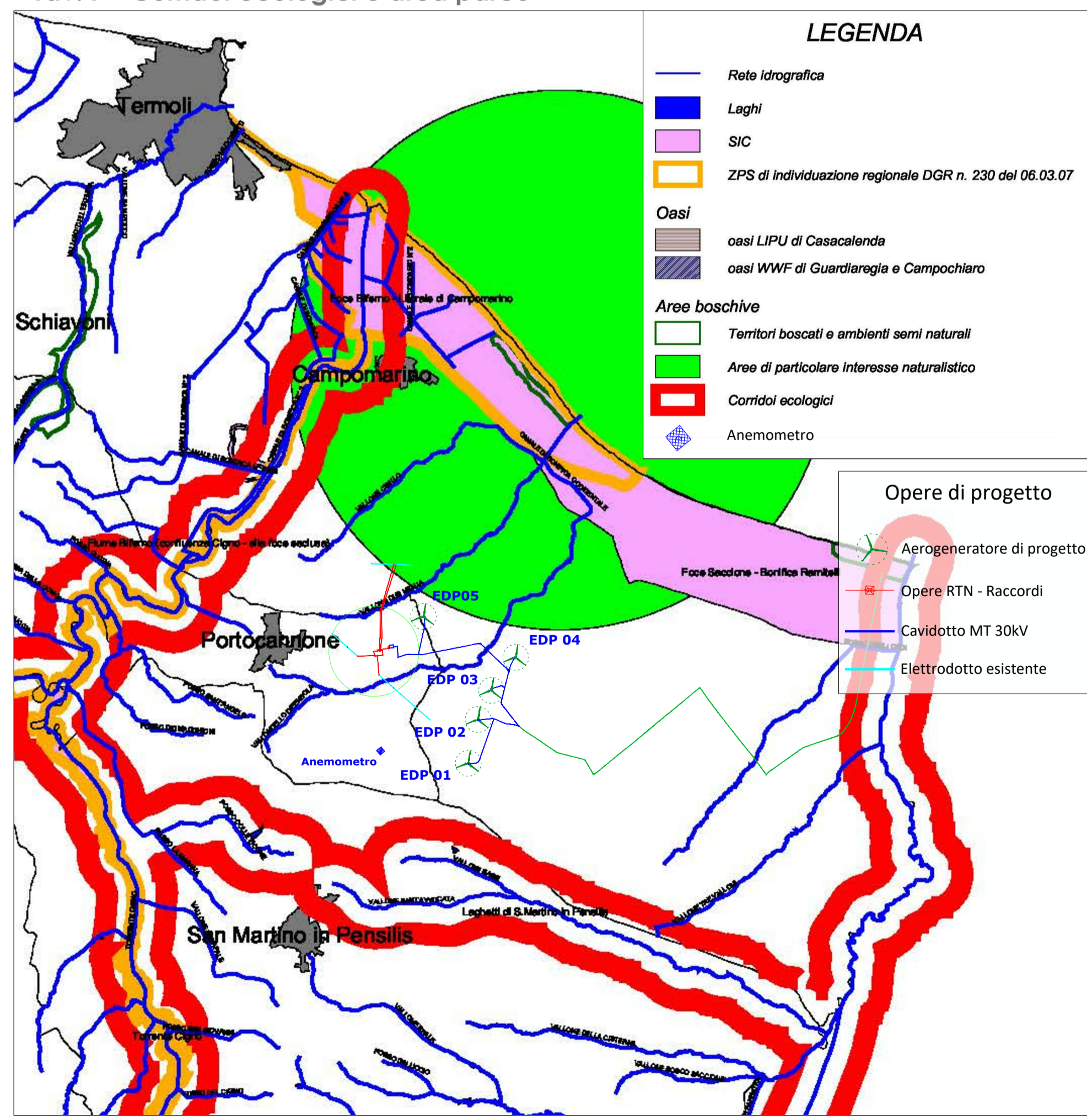
Matrice Infrastrutturale

Tav. A - Campi Eolici autorizzati



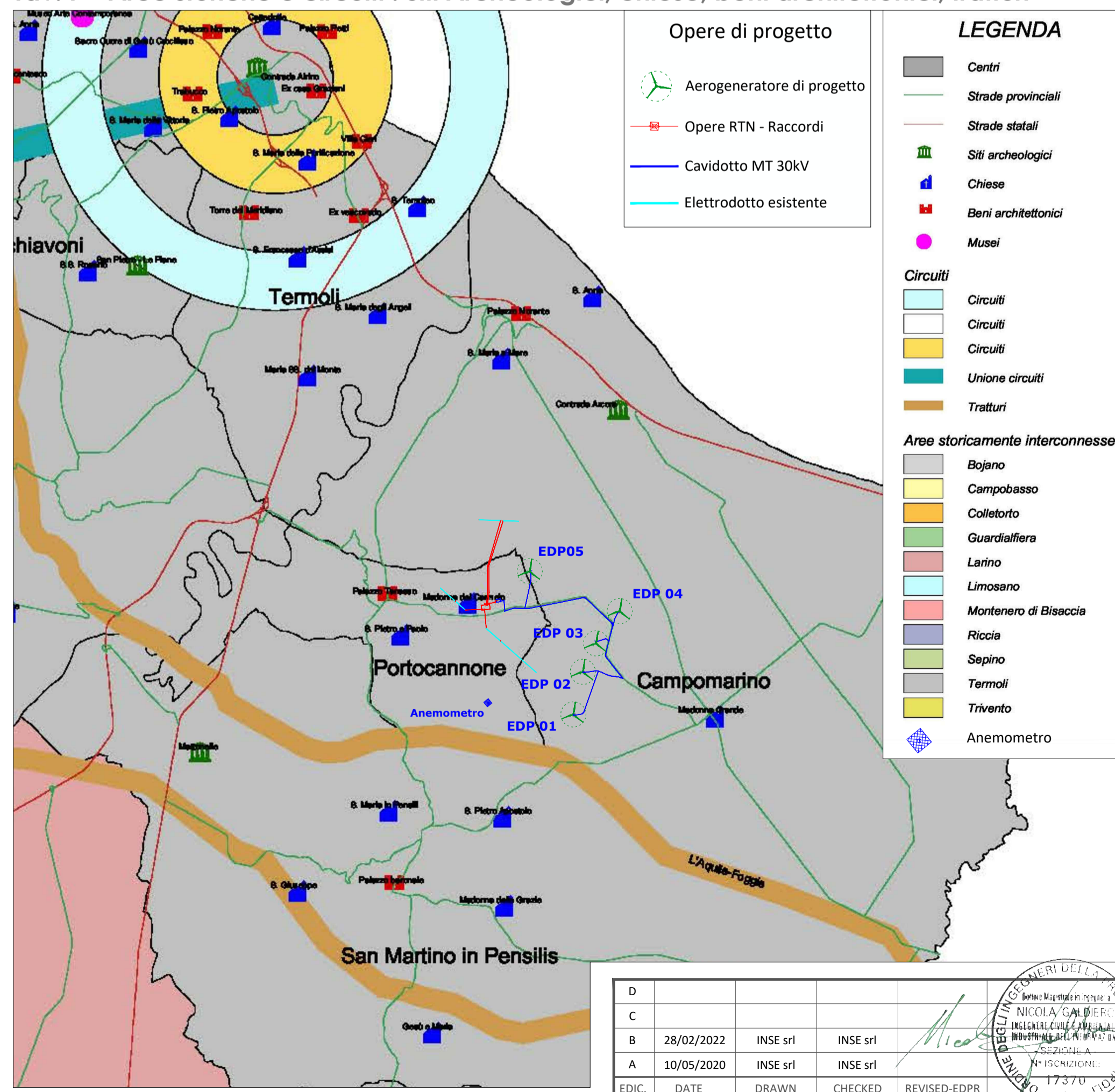
Sintesi Progettuale

Tav. P - Corridoi ecologici e area parco



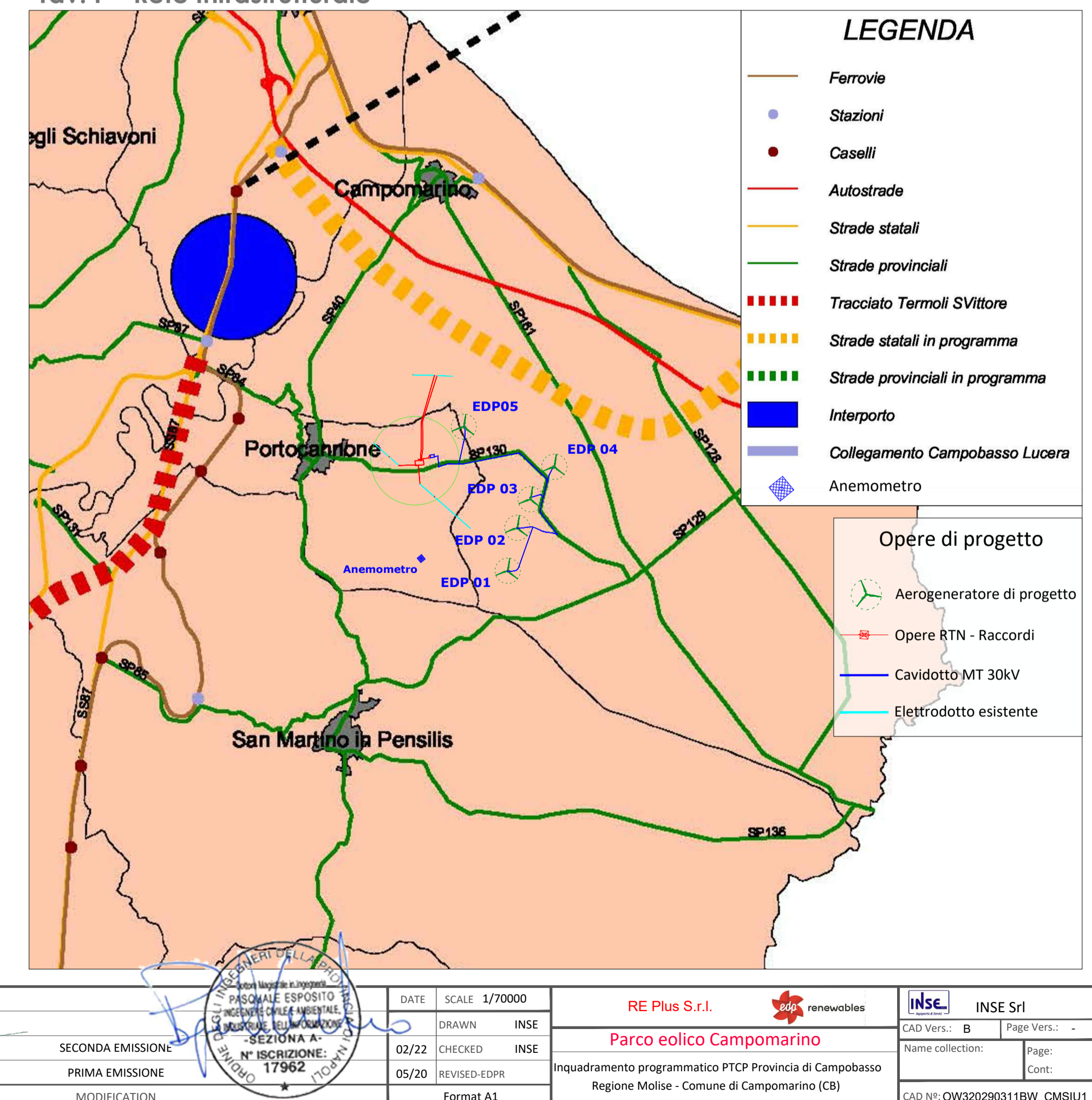
Sintesi Progettuale

Tav. P - Aree storiche e circuiti : Siti Archeologici, chiese, beni architettonici, tratturi



Sintesi Progettuale

Tav. P - Rete Infrastrutturale



D																			
C																			
B	28/02/2022	INSE srl	INSE srl																
A	10/05/2020	INSE srl	INSE srl																
EDIC.	DATE	DRAWN	CHECKED	REVISED-EDPR															

SECONDA EMISSIONE
PRIMA EMISSIONE
MODIFICATION

DATE SCALE 1/70000
DRAWN INSE
CHECKED INSE
REVISED-EDPR
Format A1

RE Plus S.r.l. renewables
Parco eolico Campomarino
Inquadramento programmatico PTC Provincia di Campobasso
Regione Molise - Comune di Campomarino (CB)

INSE INSE Srl
CAD Vers.: B Page Vers.: -
Name collection: Page:
Cont:

CAD No: OW320290311BW_CMS1U1