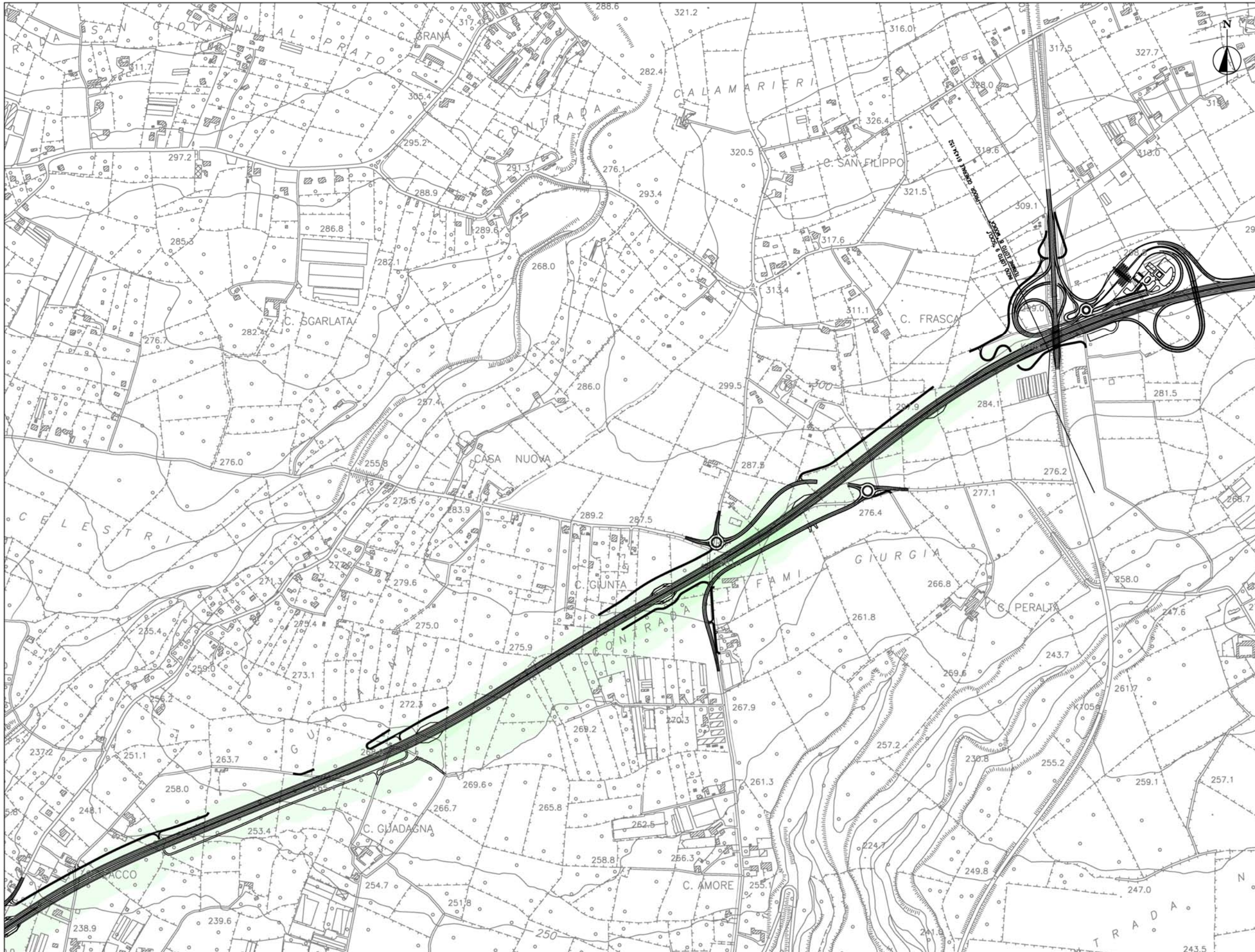


00	MAR 2014	Recepimento osservazioni M.A.T.T.M.	JERADI	LEMOS	GOZZI
REV. N.	DATA	DESCRIZIONE	ELABORATO	VERIFICATO	APPROVATO
SOSTITUISCE L'ELABORATO N°			SOSTITUITO DALL'ELABORATO N°		
<b>CONSORZIO PER LE AUTOSTRADE SICILIANE</b>					
<b>AUTOSTRADA SIRACUSA – GELA</b>					
2° TRONCO: ROSOLINI – RAGUSA					
LOTTO 9 : "SCICLI" – LOTTO 10 : "IRMINIO" – LOTTO 11 : "RAGUSA"					
<b>VERIFICA DI OTTEMPERANZA DEL PROGETTO ESECUTIVO AL DECRETO DEC/VIA/6912 DEL 21/01/2002</b>					
<b>INQUINAMENTO ATMOSFERICO MAPPE DELLA CONCENTRAZIONE MEDIA ANNUALE DEL PARAMETRO PM<sub>2,5</sub> PER LA FASE DI CANTIERE</b>					
ELABORATO N.	A18–ott–int2		PROGETTAZIONE  <b>PROGETTA</b> IL RESPONSABILE : DOTT. ING. F. BUSOLA		
DATA	SETTEMBRE 2013				
CODICE CAD–FILE	A18–ott–int2.doc				
<small>OPERA PROTETTA AI SENSI DELLA LEGGE 22 APRILE 1941 N. 633 TUTTI I DIRITTI RISERVATI QUALSIASI RIPRODUZIONE ED UTILIZZAZIONE NON AUTORIZZATE SARANNO PERSEGUITE A RIGORE DI LEGGE</small>					





Modello di Qualità dell'Aria

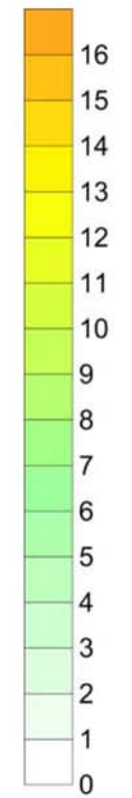
**Lotto 9 - "Scicli"**

Fase di Cantiere

**Legenda**

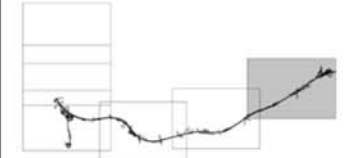
Concentrazione media annua  
PM<sub>2.5</sub>

( $\mu\text{g}/\text{m}^3$ )

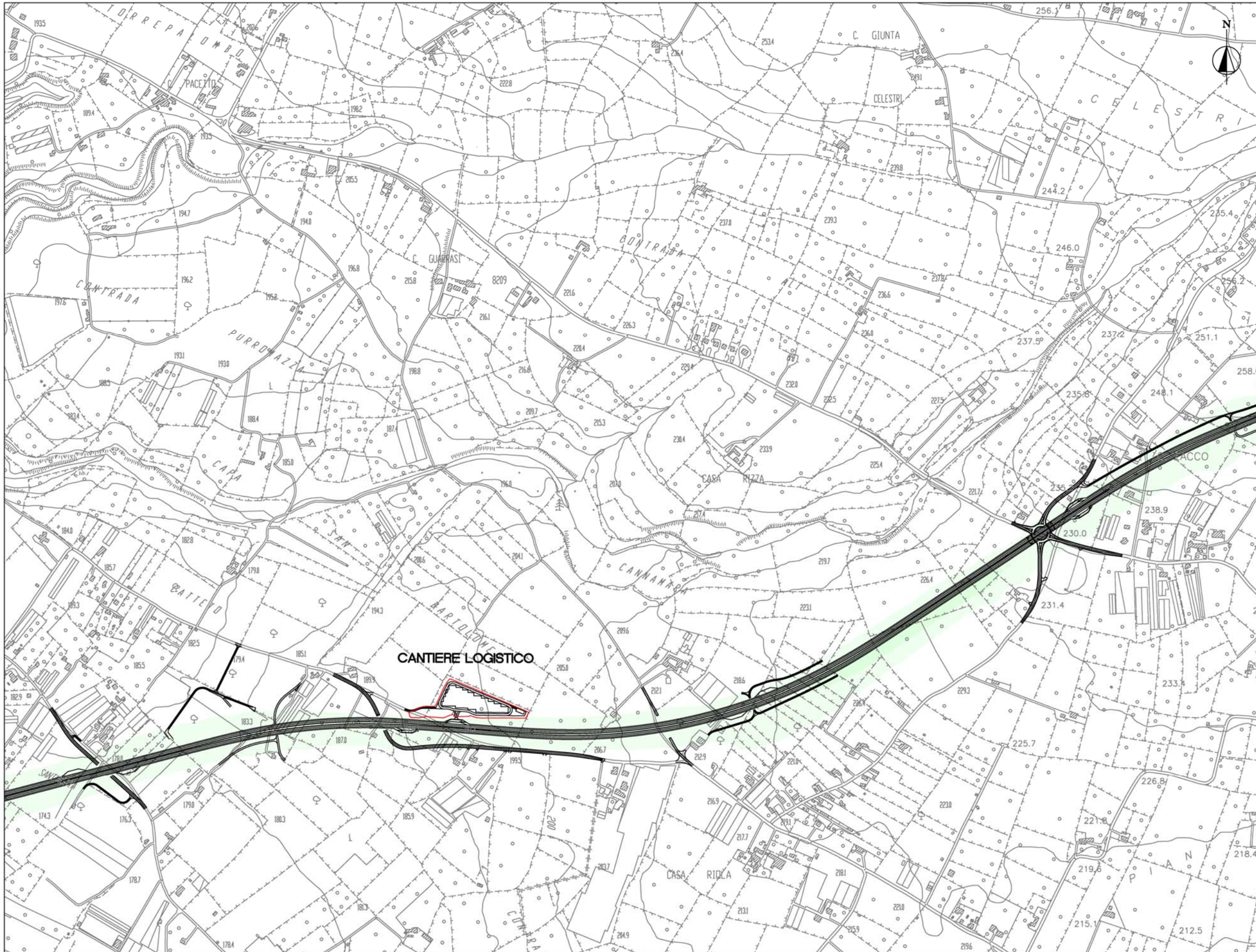


Valore obiettivo: 25  $\mu\text{g}/\text{m}^3$

Keymap







Modello di Qualità dell'Aria

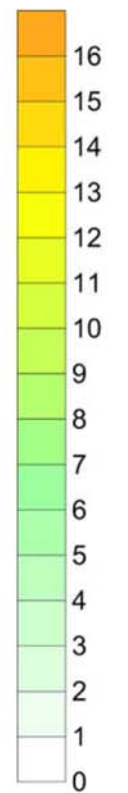
**Lotto 9 - "Scicli"**

Fase di Cantiere

**Legenda**

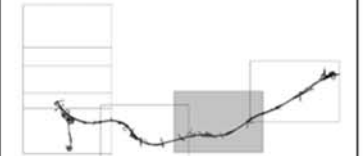
Concentrazione media annua  
PM<sub>2.5</sub>

( $\mu\text{g}/\text{m}^3$ )

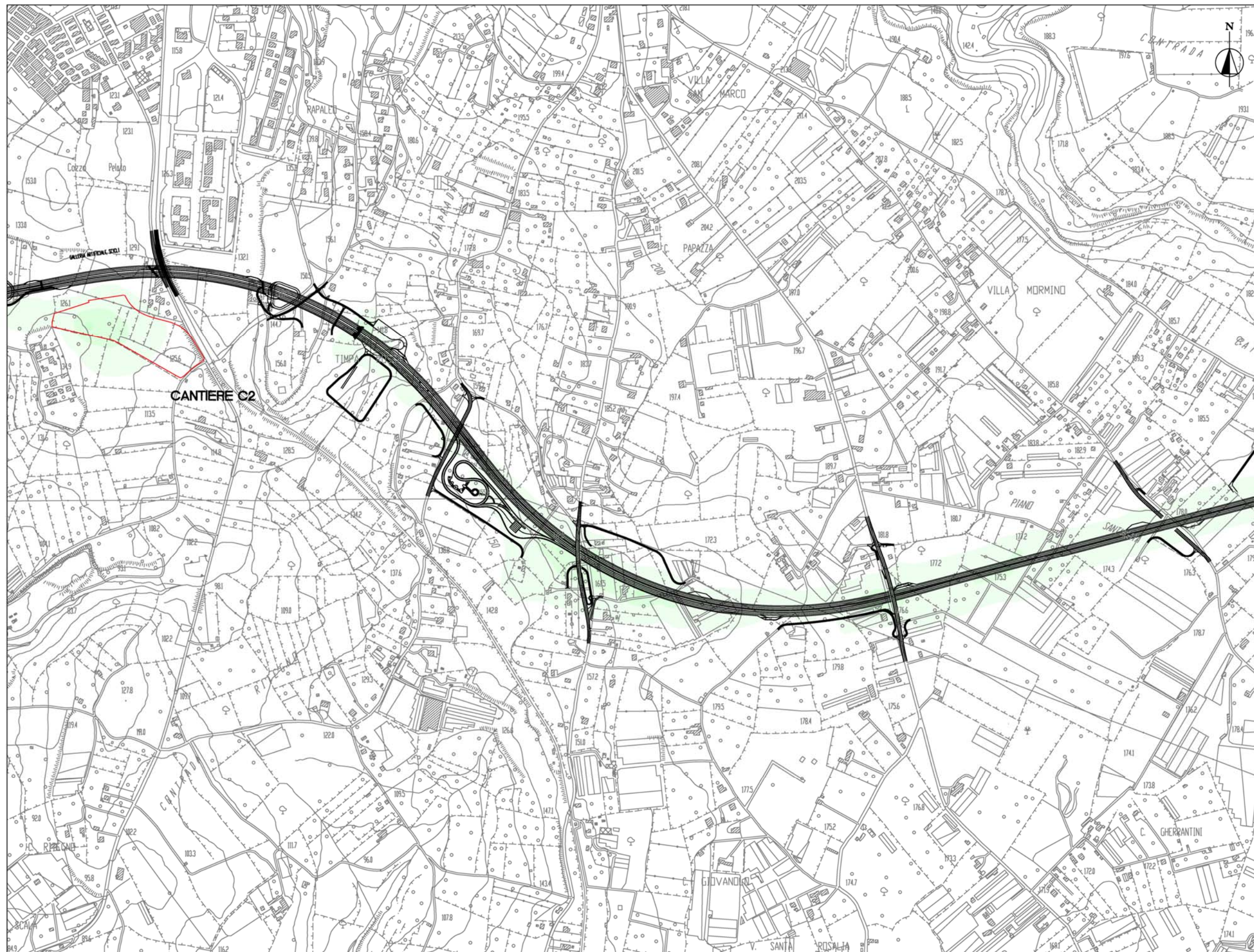


Valore obiettivo: 25  $\mu\text{g}/\text{m}^3$

Keymap







Modello di Qualità dell'Aria

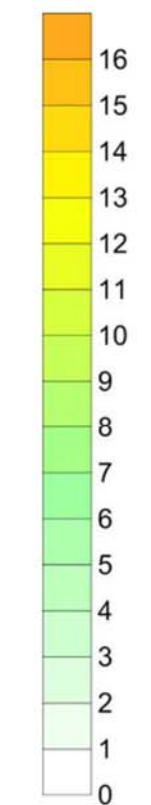
Lotto 9 - "Scicli"

Fase di Cantiere

### Legenda

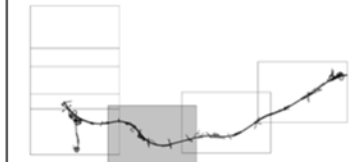
Concentrazione media annua  
PM<sub>2.5</sub>

( $\mu\text{g}/\text{m}^3$ )

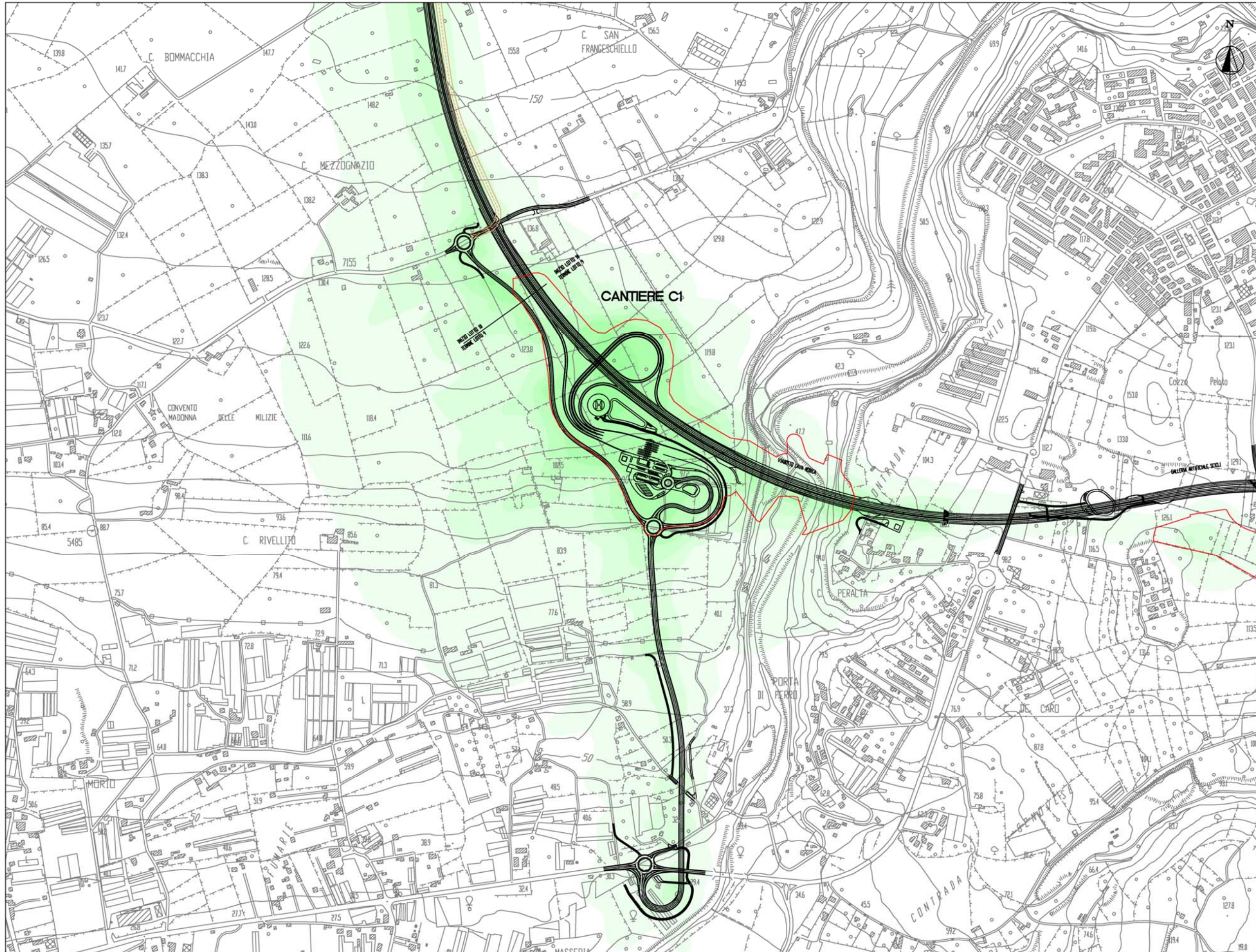


Valore obiettivo: 25  $\mu\text{g}/\text{m}^3$

Keymap







Modello di Qualità dell'Aria

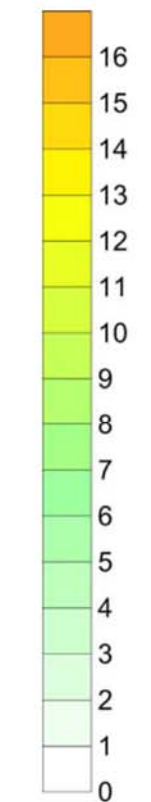
Lotto 9 - "Scicli"

Fase di Cantiere

### Legenda

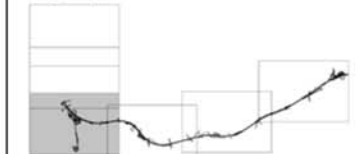
Concentrazione media annua  
PM<sub>2,5</sub>

(µg/m<sup>3</sup>)



Valore obiettivo: 25 µg/m<sup>3</sup>

Keymap







Modello di Qualità dell'Aria

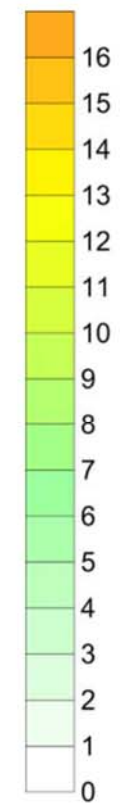
**Lotto 9 - "Scicli"**

Fase di Cantiere

**Legenda**

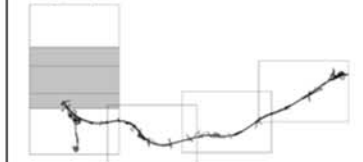
Concentrazione media annua  
PM<sub>2.5</sub>

(µg/m<sup>3</sup>)



Valore obiettivo: 25 µg/m<sup>3</sup>

Keymap







Modello di Qualità dell'Aria

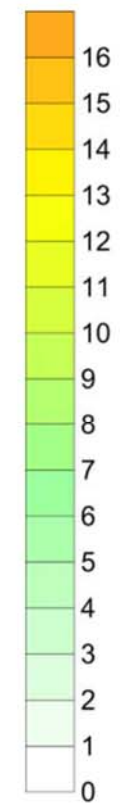
Lotto 9 - "Scicli"

Fase di Cantiere

### Legenda

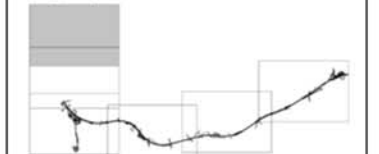
Concentrazione media annua  
PM<sub>2,5</sub>

( $\mu\text{g}/\text{m}^3$ )

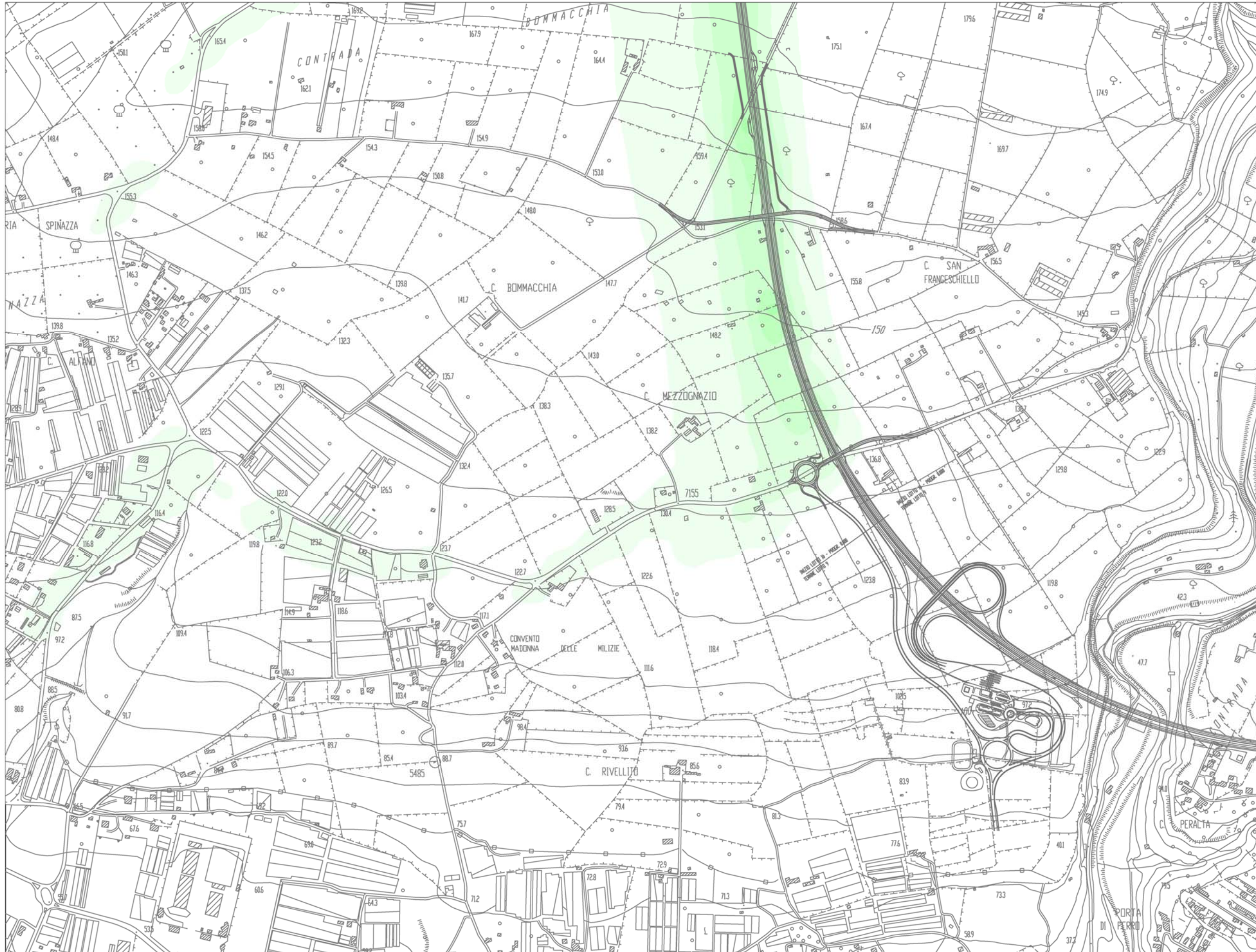


Valore obiettivo: 25  $\mu\text{g}/\text{m}^3$

Keymap







Modello di Qualità dell'Aria

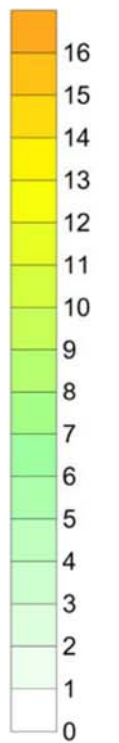
Lotto 10 - "Irrinio"  
Lotto 11 - "Ragusa"

Fase di Cantiere

Legenda

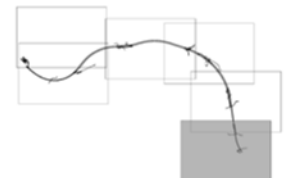
Concentrazione media annua  
PM<sub>2.5</sub>

(µg/m<sup>3</sup>)

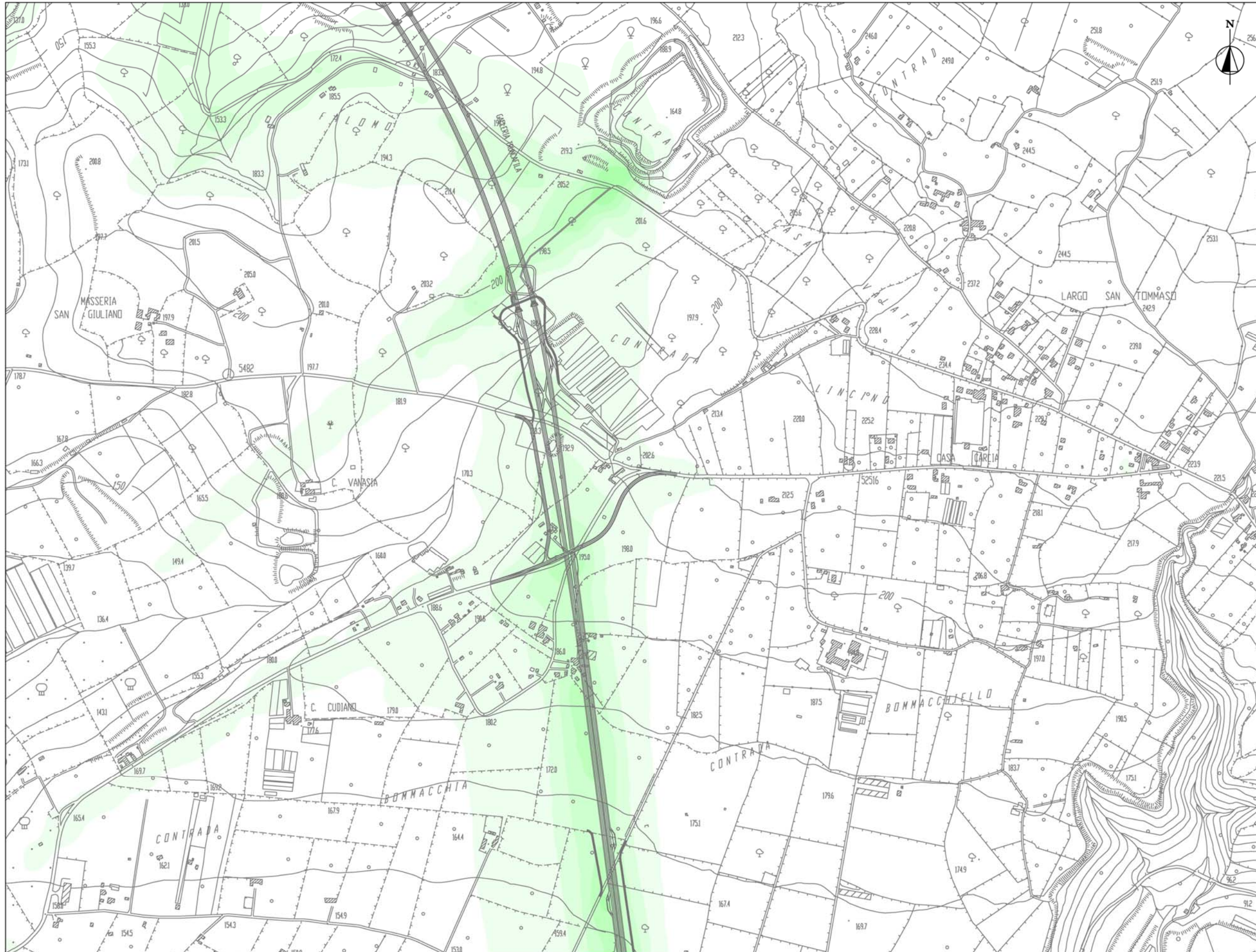


Valore obiettivo: 25 µg/m<sup>3</sup>

Keymap







Modello di Qualità dell'Aria

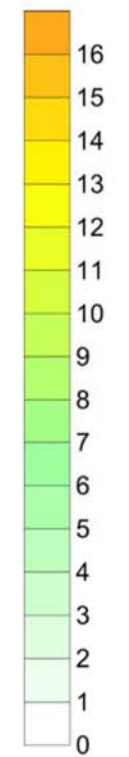
Lotto 10 - "Irrinio"  
Lotto 11 - "Ragusa"

Fase di Cantiere

Legenda

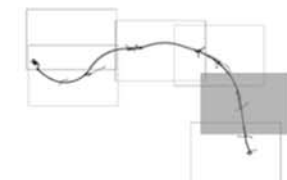
Concentrazione media annua  
PM<sub>2.5</sub>

( $\mu\text{g}/\text{m}^3$ )

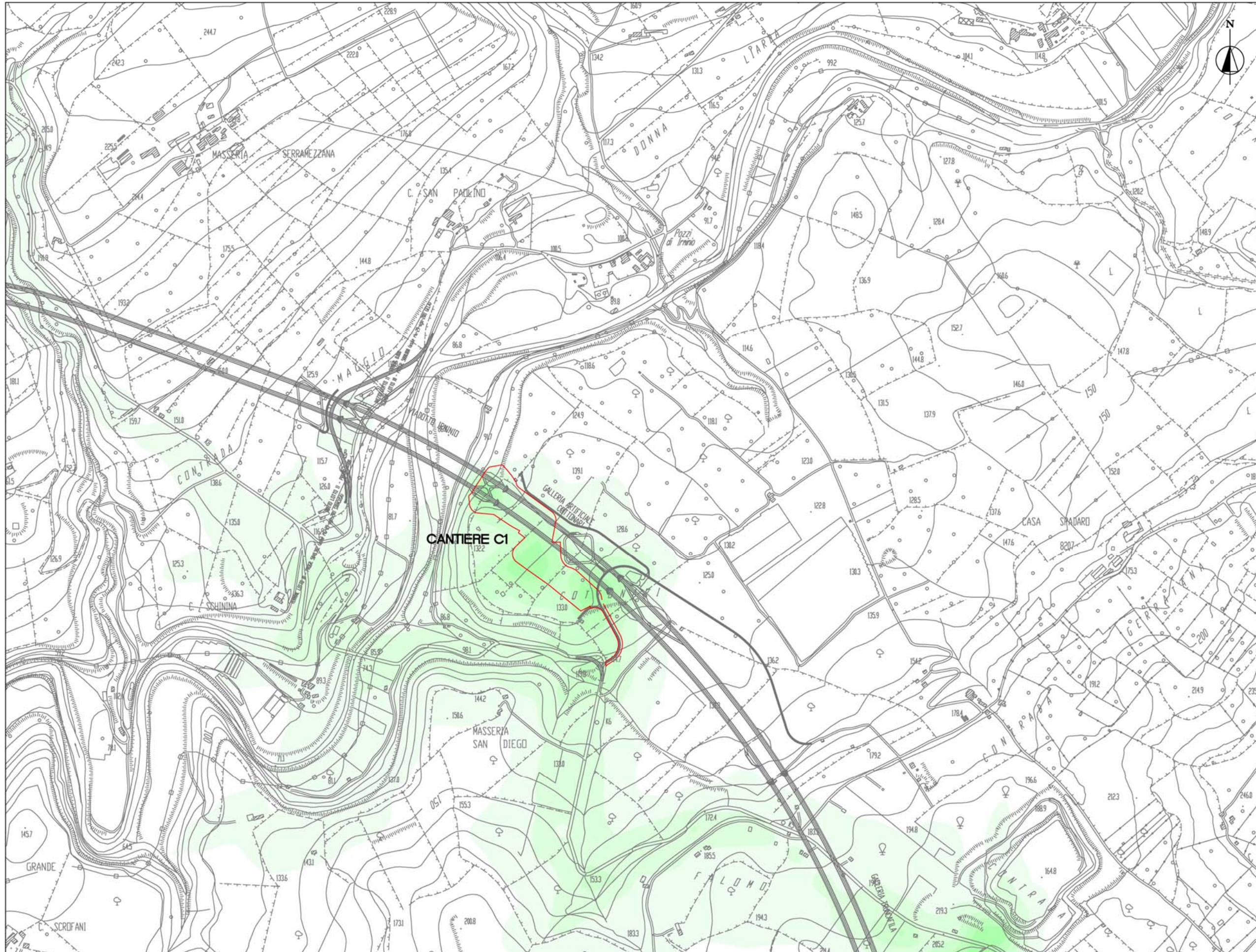


Valore obiettivo: 25  $\mu\text{g}/\text{m}^3$

Keymap







Modello di Qualità dell'Aria

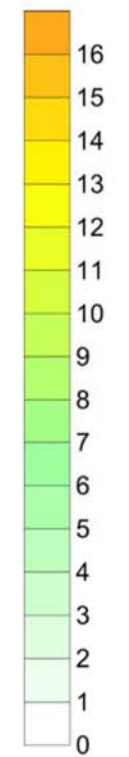
Lotto 10 - "Irrinio"  
Lotto 11 - "Ragusa"

Fase di Cantiere

Legenda

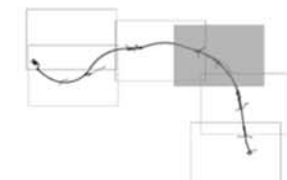
Concentrazione media annua  
PM<sub>2.5</sub>

(µg/m<sup>3</sup>)

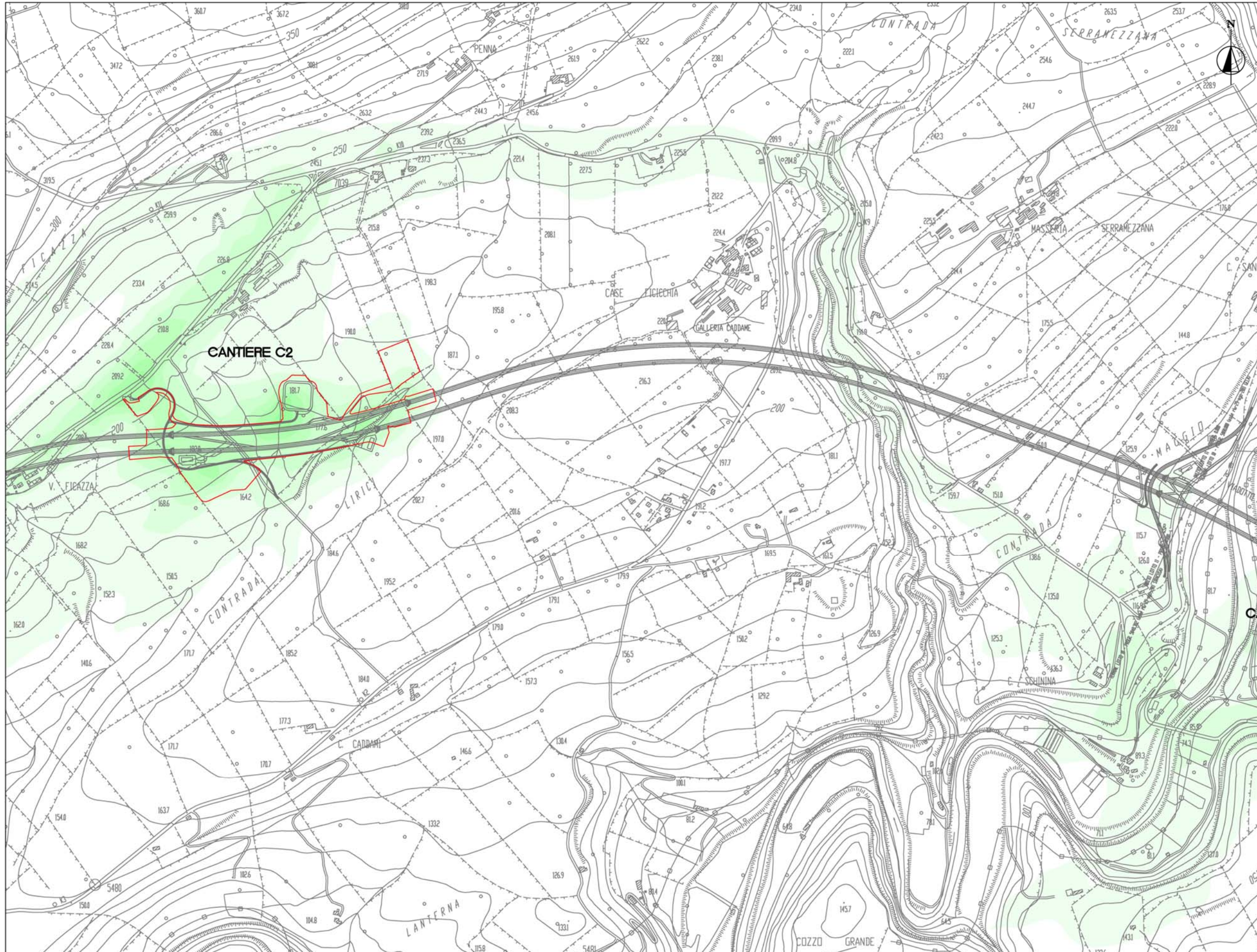


Valore obiettivo: 25 µg/m<sup>3</sup>

Keymap







Modello di Qualità dell'Aria

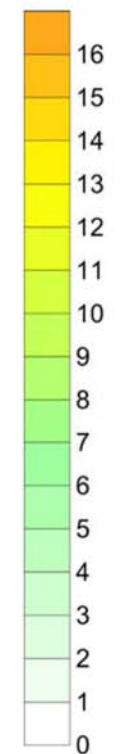
Lotto 10 - "Irmínio"  
Lotto 11 - "Ragusa"

Fase di Cantiere

Legenda

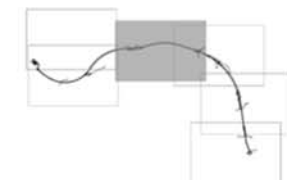
Concentrazione media annua  
PM<sub>2.5</sub>

(µg/m<sup>3</sup>)

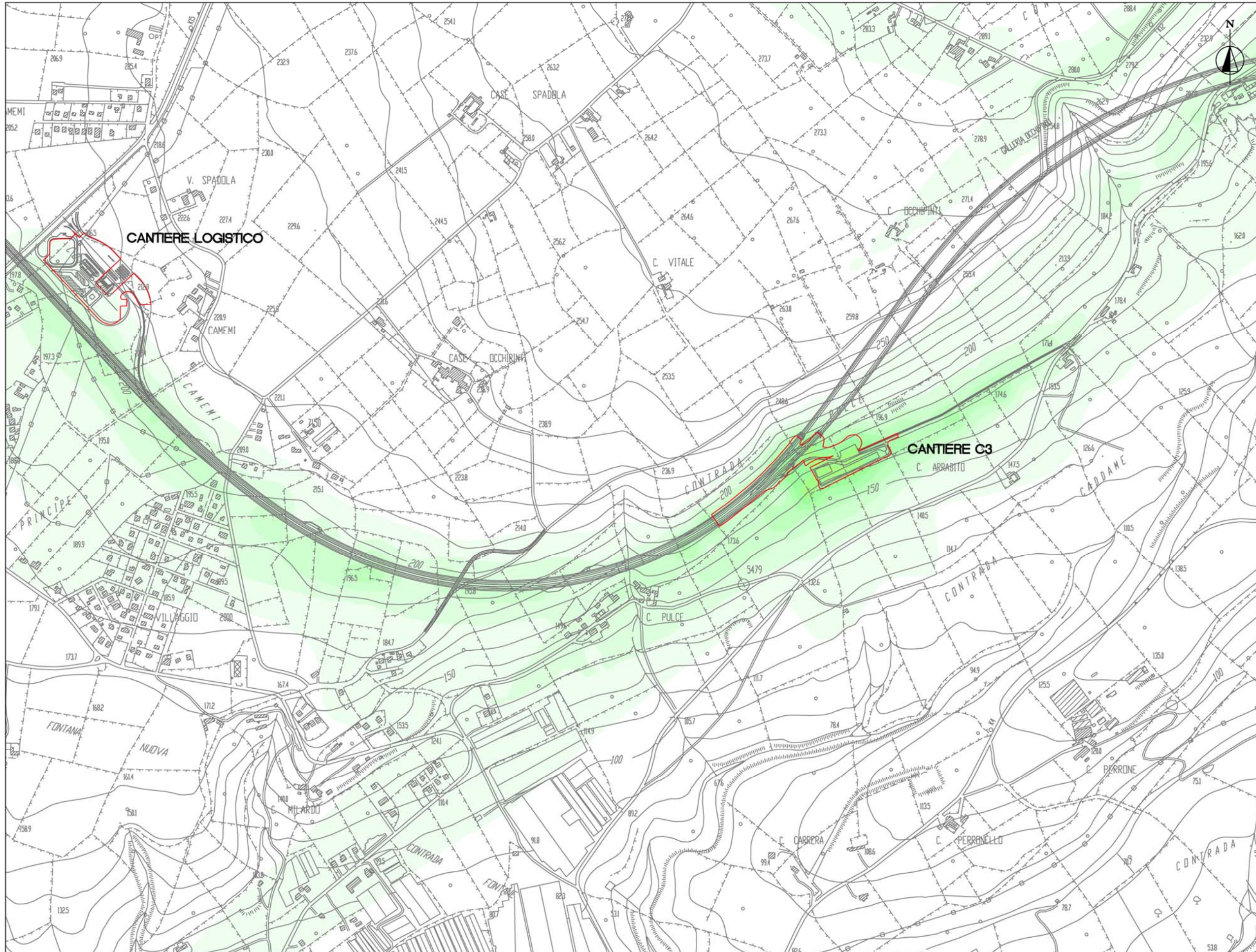


Valore obiettivo: 25 µg/m<sup>3</sup>

Keymap







**Modello di Qualità dell'Aria**

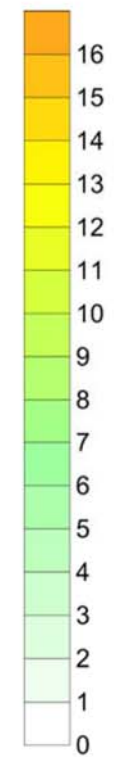
**Lotto 10 - "Irrinio"  
Lotto 11 - "Ragusa"**

Fase di Cantiere

**Legenda**

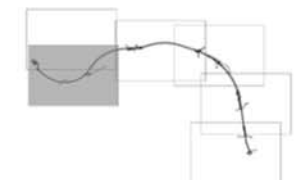
Concentrazione media annua  
PM<sub>2.5</sub>

(µg/m<sup>3</sup>)

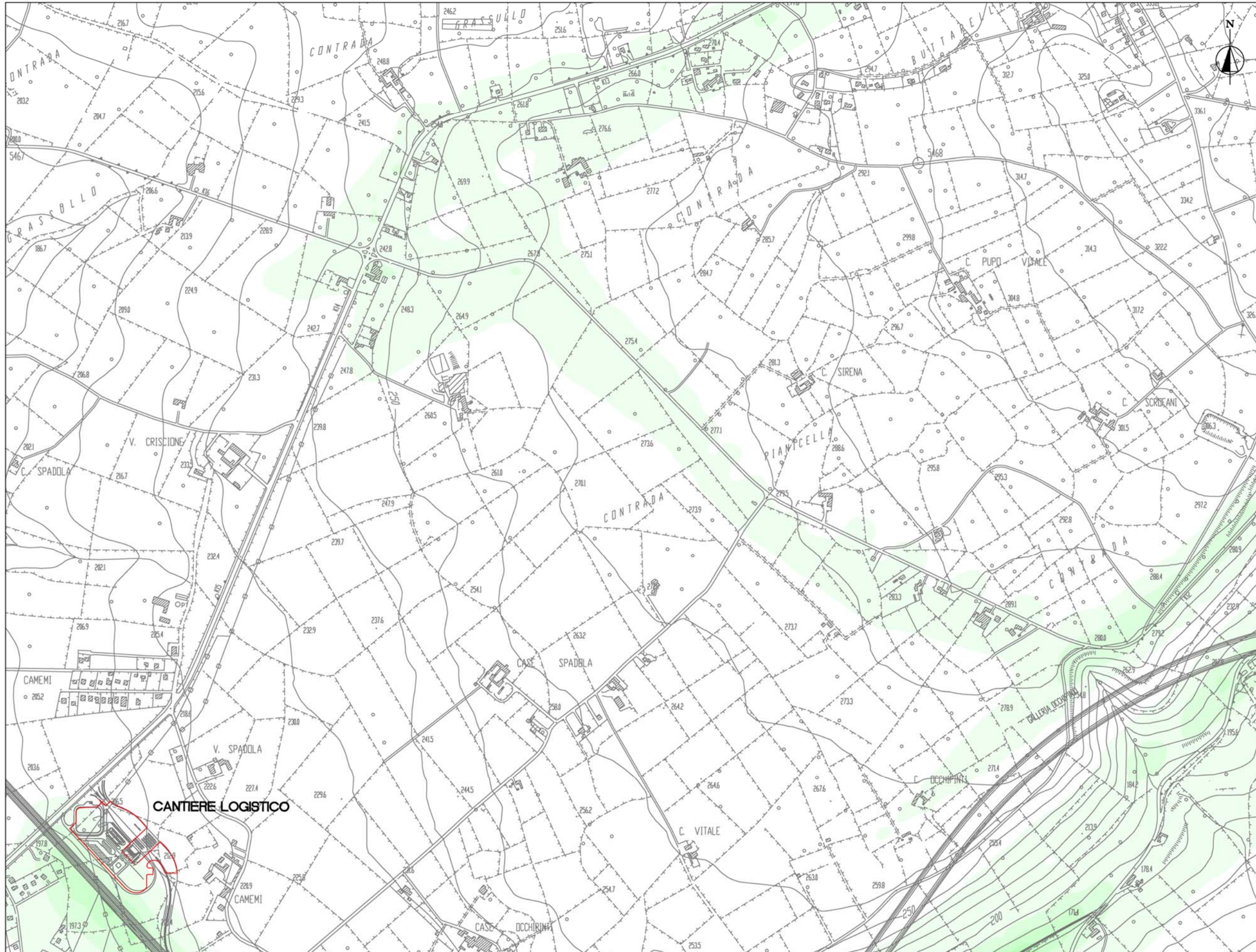


Valore obiettivo: 25 µg/m<sup>3</sup>

**Keymap**







**Modello di Qualità dell'Aria**

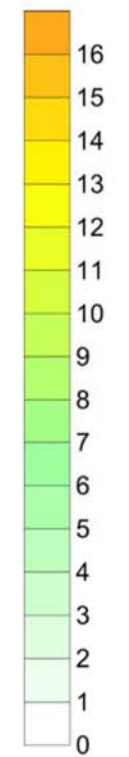
**Lotto 10 - "Irrinio"  
Lotto 11 - "Ragusa"**

Fase di Cantiere

**Legenda**

Concentrazione media annua  
**PM<sub>2.5</sub>**

( $\mu\text{g}/\text{m}^3$ )



Valore obiettivo: 25  $\mu\text{g}/\text{m}^3$

**Keymap**

