

AUTOSTRADA SIRACUSA-GELA

2° TRONCO ROSOLINI - RAGUSA

PROGETTO GUGEWK&Q

LOTTO 10 "IRMINIO"

**VERIFICA DI OTTEMPERANZA DEL PROGETTO GUGEWK&Q AL PROGETTO APPROVATO DAL MINISTERO DELL'AMBIENTE E DELLA TUTELA
DEL TERRITORIO CON DECRETO DEL 21-01-2002 (DEC-VIA-6912)**

PRESCRIZIONE C - 1

**RELAZIONE INQUINAMENTO ACUSTICO
EA1810T00SGC1AMBRE002A**

ALLEGATO B - MAPPE DELLE SIMULAZIONI ACUSTICHE

INDICE ELABORATI:

TAVOLA C1-ACU01: Mappa dei ricettori

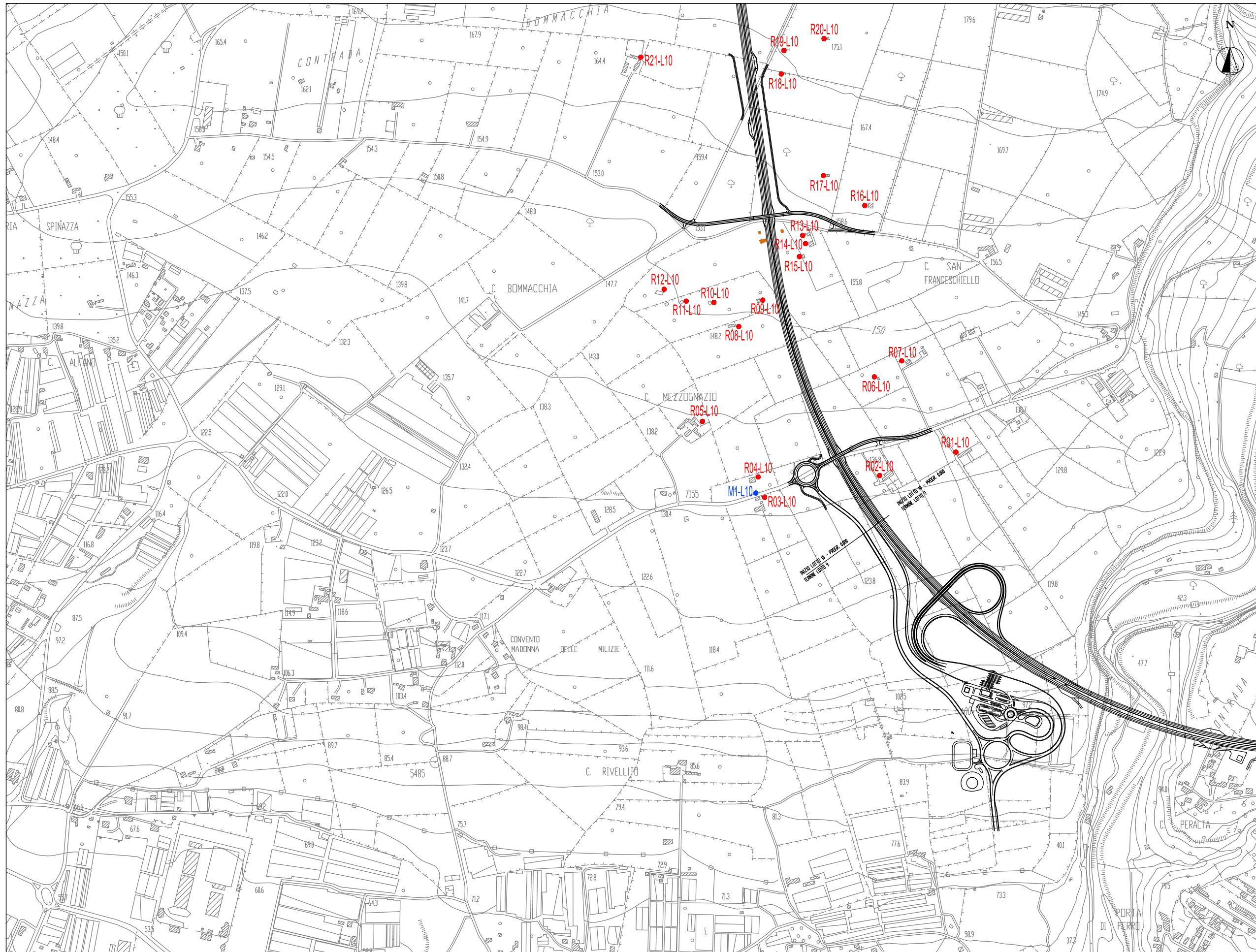
TAVOLA C1-ACU02: Mappa delle isofoniche a 1.5 m dal suolo del livello equivalente – periodo diurno

TAVOLA C1-ACU03: Mappa delle isofoniche a 1.5 m dal suolo del livello equivalente – periodo notturno

TAVOLA C1-ACU04: Mappa delle isofoniche a 4 m dal suolo del livello equivalente – periodo diurno

TAVOLA C1-ACU05: Mappa delle isofoniche a 4 m dal suolo del livello equivalente – periodo notturno

TAVOLA C1-ACU01: Mappa dei ricettori



Modello di Propagazione del Rumore

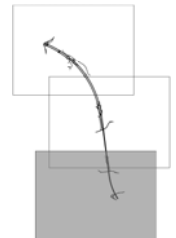
Lotto 10 - "Irmínio"

Fase di Esercizio

Legenda

- Tracciato autostrada
- Ricettore
- Punto di misura
- Edifici di cui è previsto l'esproprio

Keymap









Modello di Propagazione del Rumore

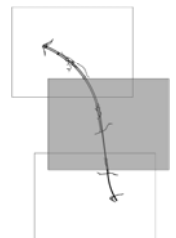
Lotto 10 - "Irinio"

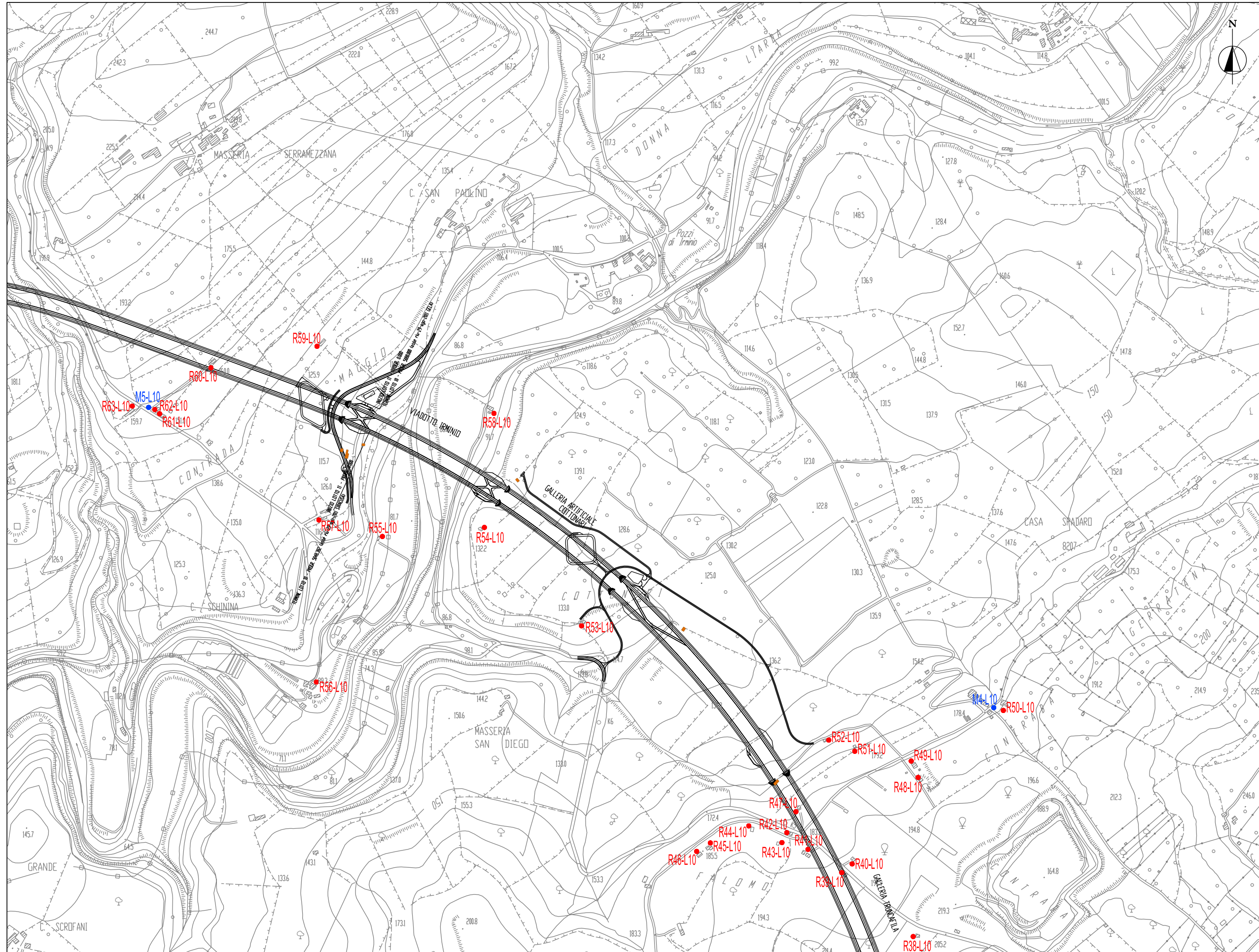
Fase di Esercizio

Legenda

-  Tracciato autostrada
-  Ricettore
-  Punto di misura
-  Edifici di cui è previsto l'esproprio

Keymap









Modello di Propagazione del Rumore

Lotto 10 - "Irinio"

Fase di Esercizio

Legenda

-  Tracciato autostrada
-  Ricettore
-  Punto di misura
-  Edifici di cui è previsto l'esproprio

Keymap

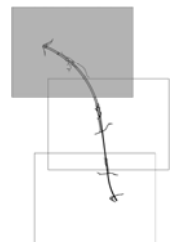
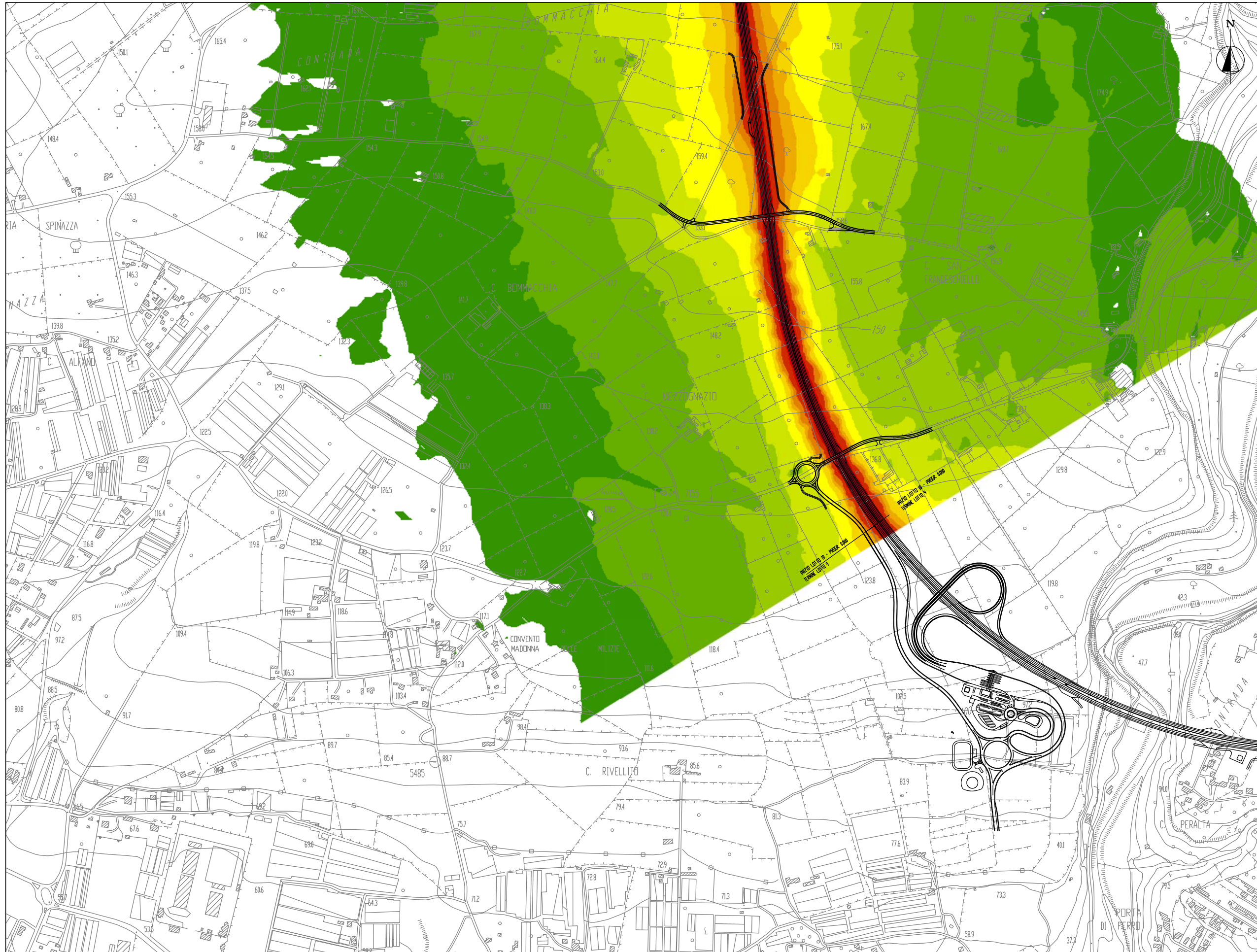


TAVOLA C1-ACU02: Mappa delle isofoniche a 1.5 m dal suolo del livello equivalente – periodo diurno



Modello di Propagazione del Rumore

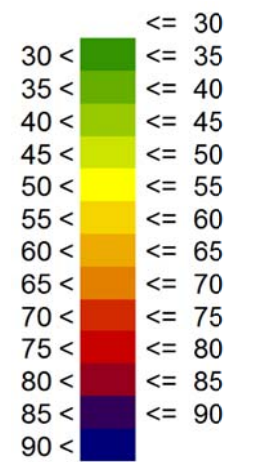
Lotto 10 - "Irmínio"

Fase di Esercizio

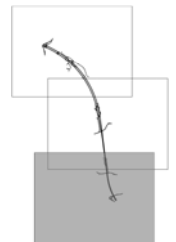
Legenda

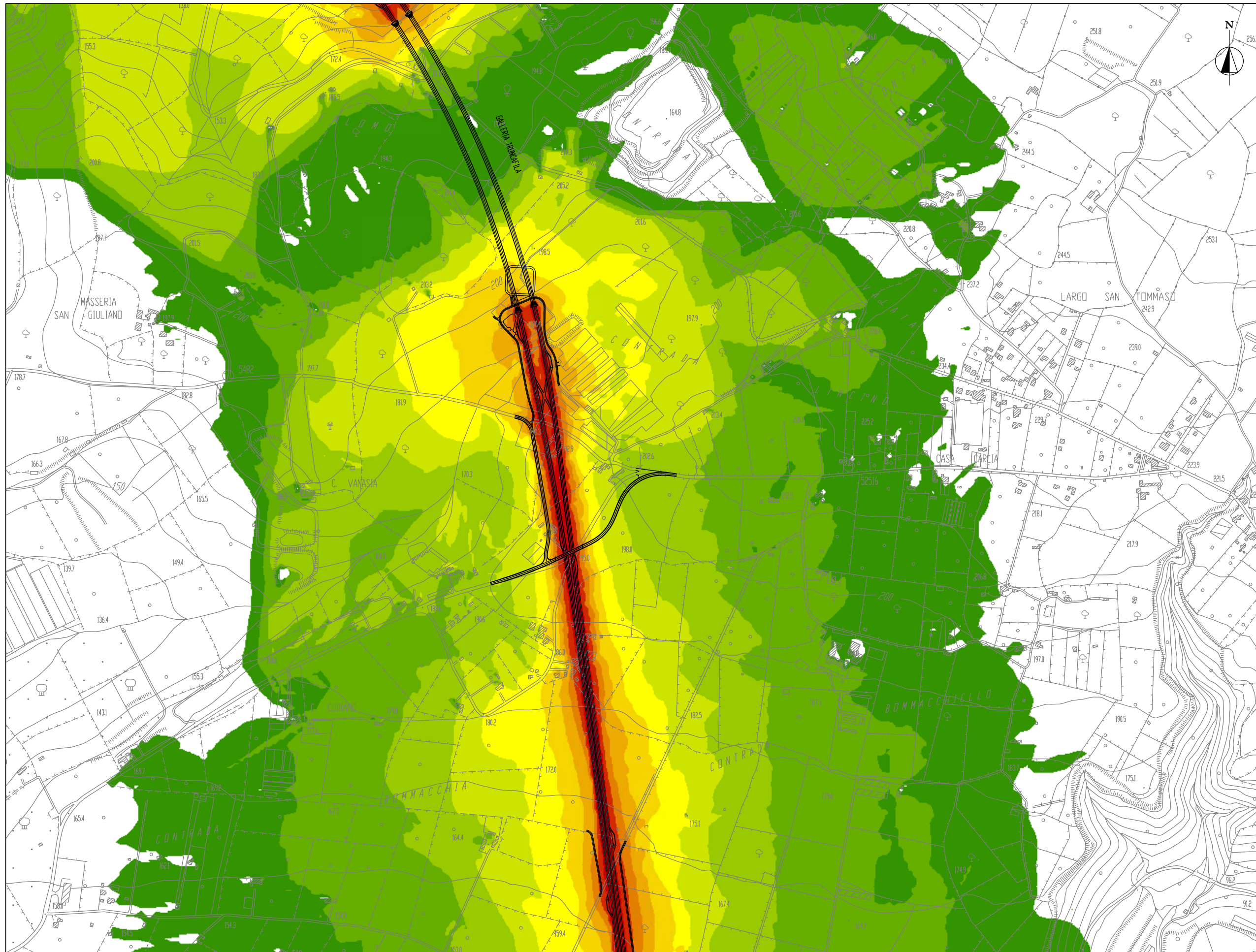
Livello equivalente diurno
(mappa a 1.5 m)

LDay (06-22)
(dB(A))



Keymap





Modello di Propagazione del Rumore

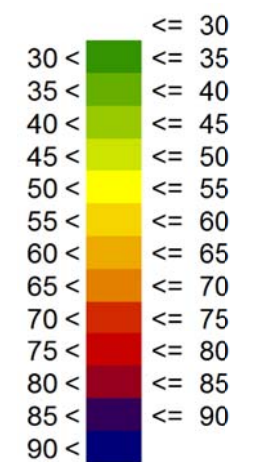
Lotto 10 - "Irrinio"

Fase di Esercizio

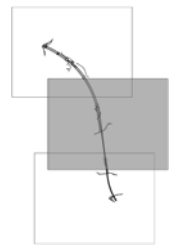
Legenda

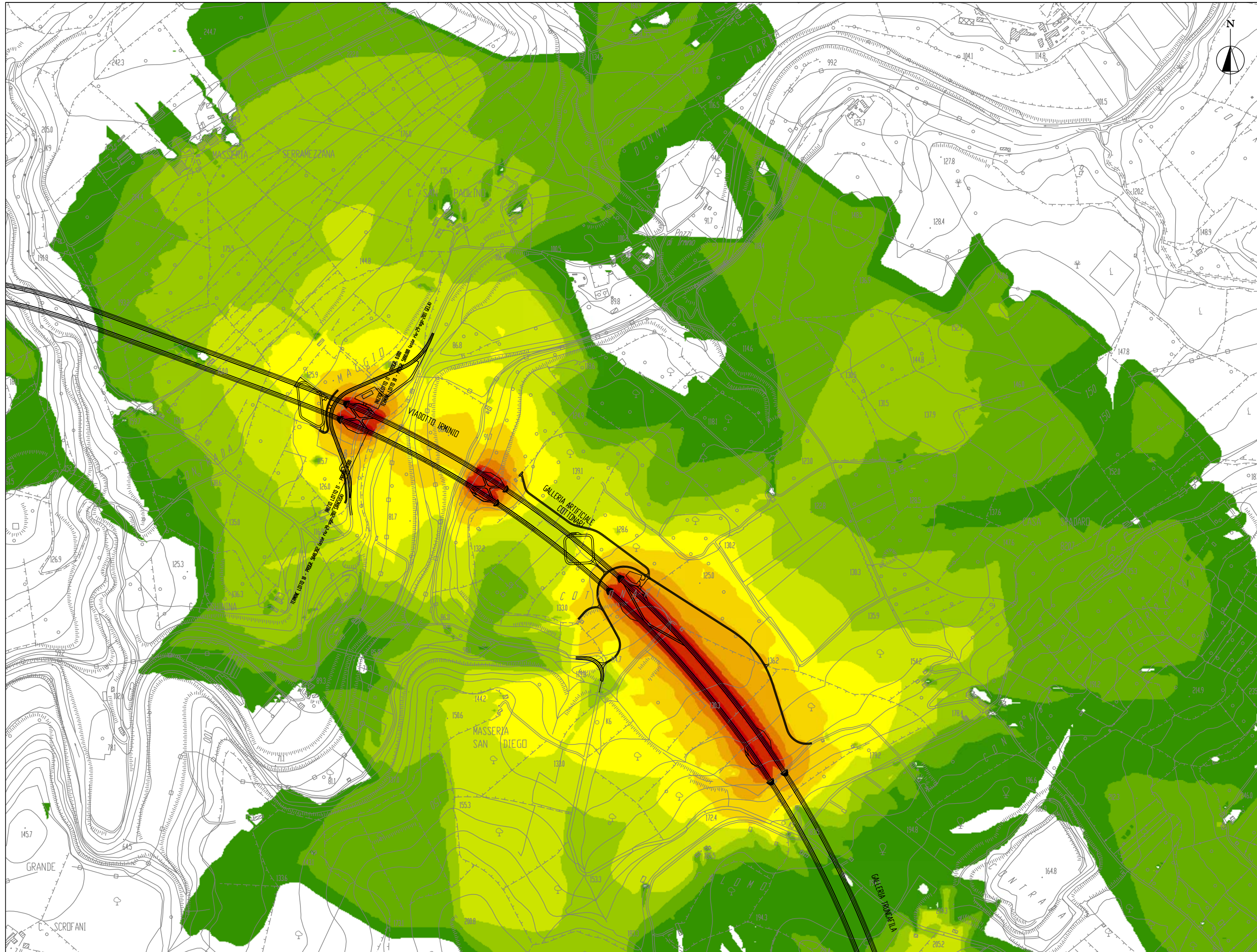
Livello equivalente diurno
(mappa a 1.5 m)

LDay (06-22)
(dB(A))



Keymap





Modello di Propagazione del Rumore

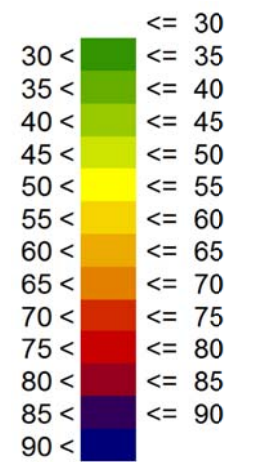
Lotto 10 - "Irmínio"

Fase di Esercizio

Legenda

Livello equivalente diurno
 (mappa a 1.5 m)

LDay (06-22)
 (dB(A))



Keymap

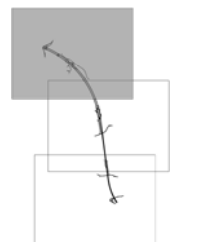
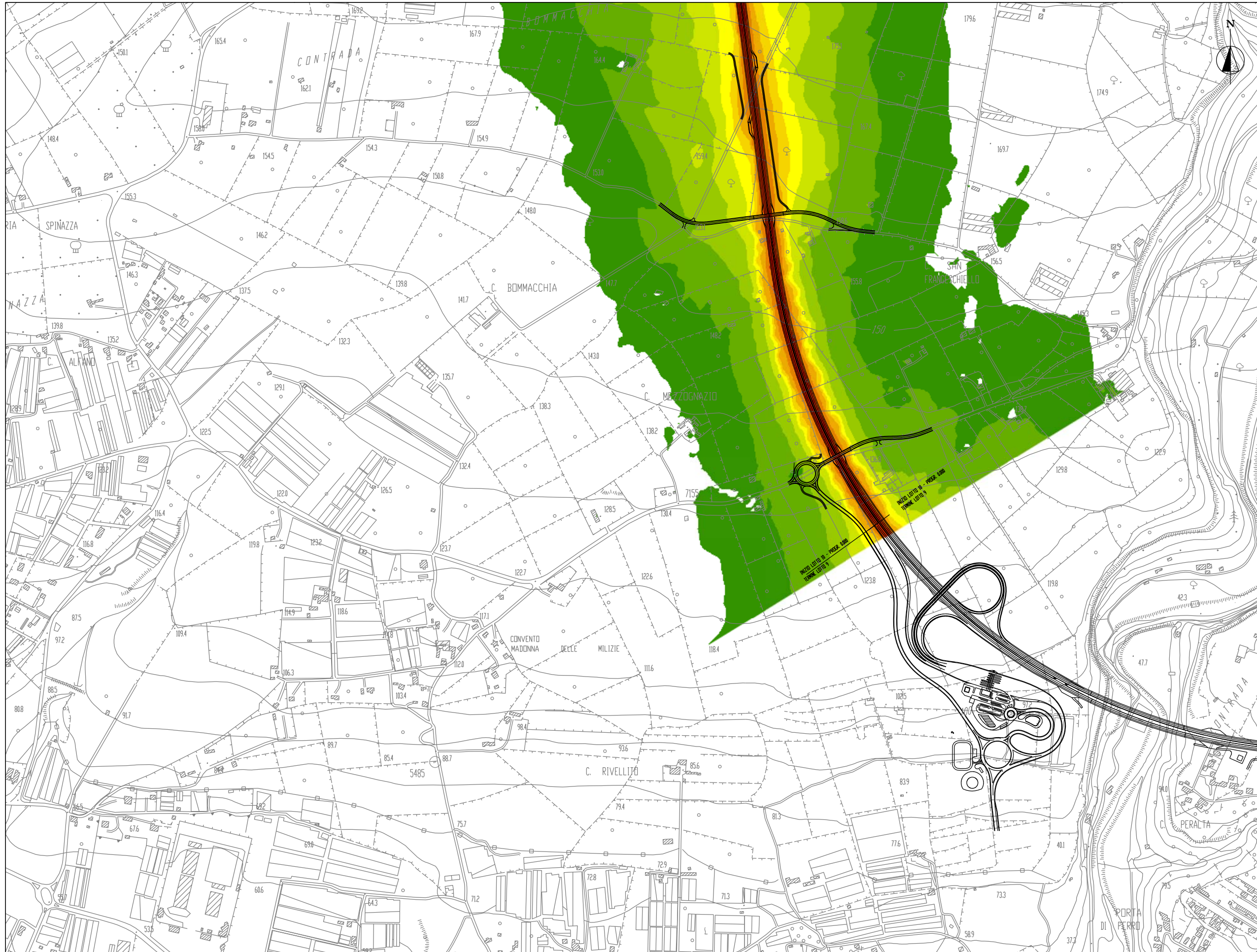


TAVOLA C1-ACU03: Mappa delle isofoniche a 1.5 m dal suolo del livello equivalente – periodo notturno



Modello di Propagazione del Rumore

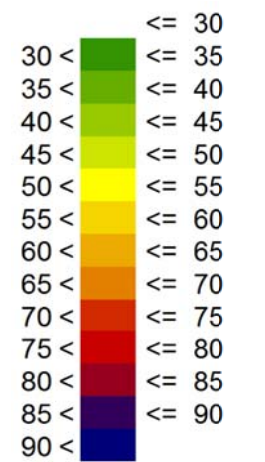
Lotto 10 - "Irminio"

Fase di Esercizio

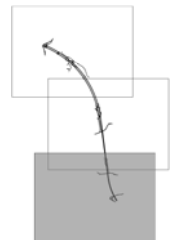
Legenda

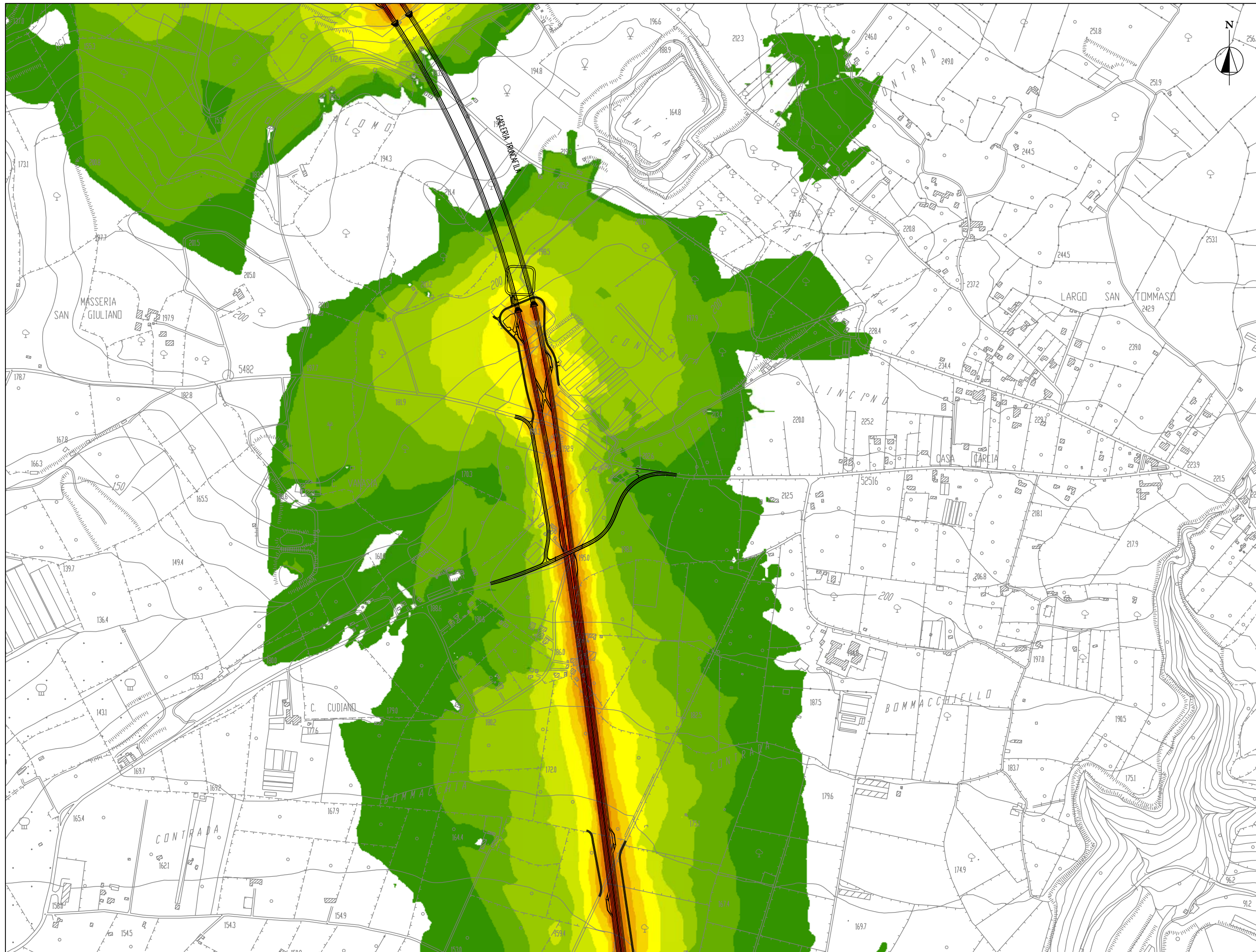
Livello equivalente notturno
(mappa a 1.5 m)

LNight (22-06)
(dB(A))



Keymap





Modello di Propagazione del Rumore

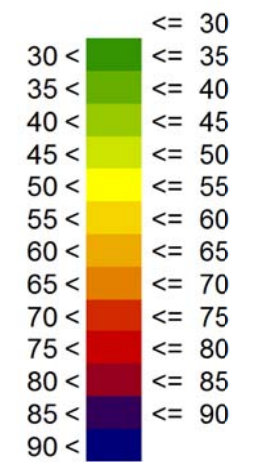
Lotto 10 - "Irminio"

Fase di Esercizio

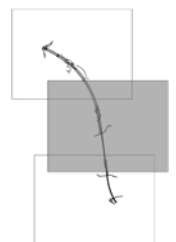
Legenda

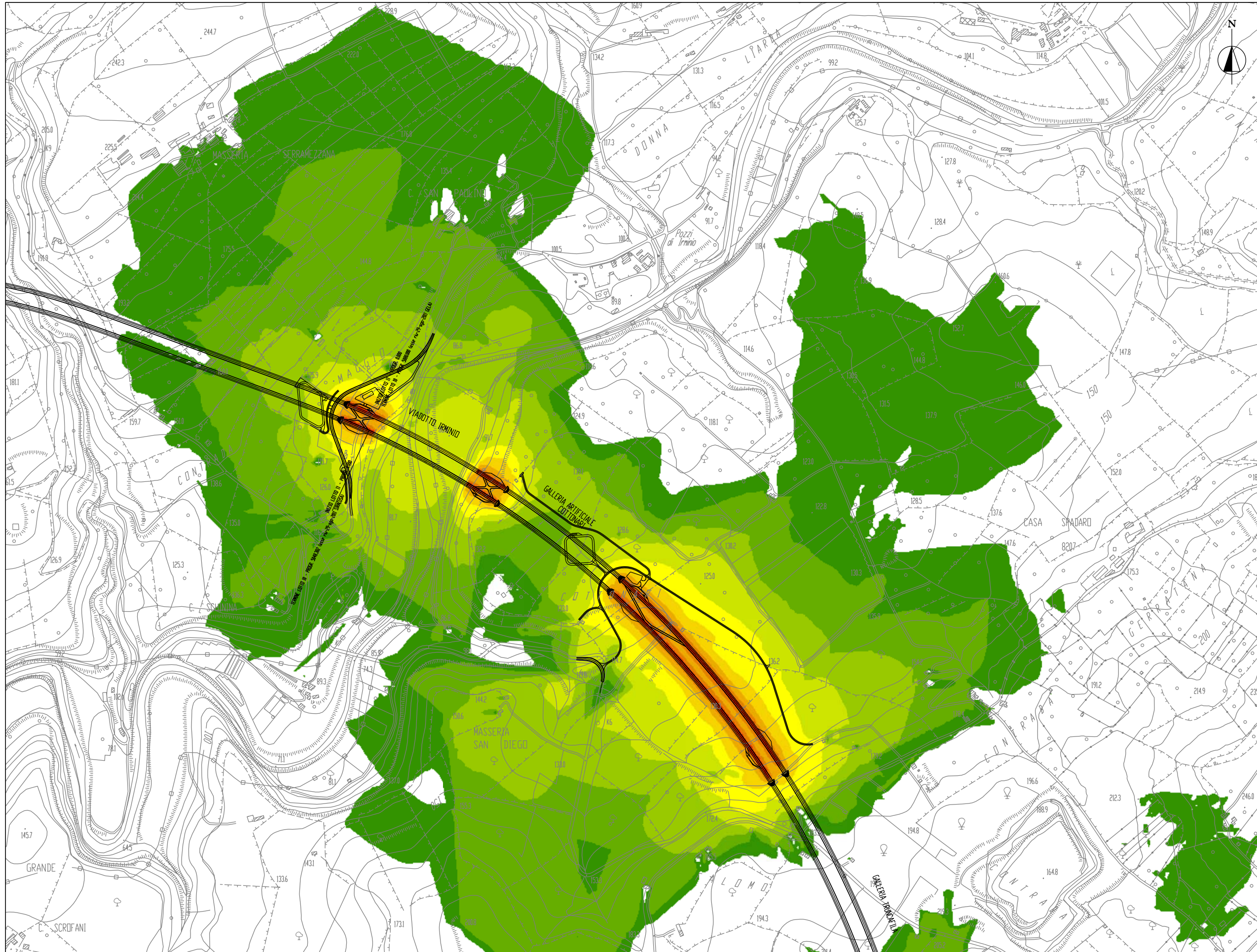
Livello equivalente notturno
(mappa a 1.5 m)

L_{Night} (22-06)
(dB(A))



Keymap





Modello di Propagazione del Rumore

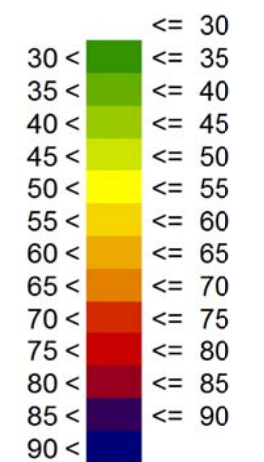
Lotto 10 - "Irmínio"

Fase di Esercizio

Legenda

Livello equivalente notturno
(mappa a 1.5 m)

LNight (22-06)
(dB(A))



Keymap

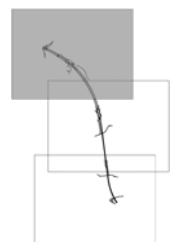
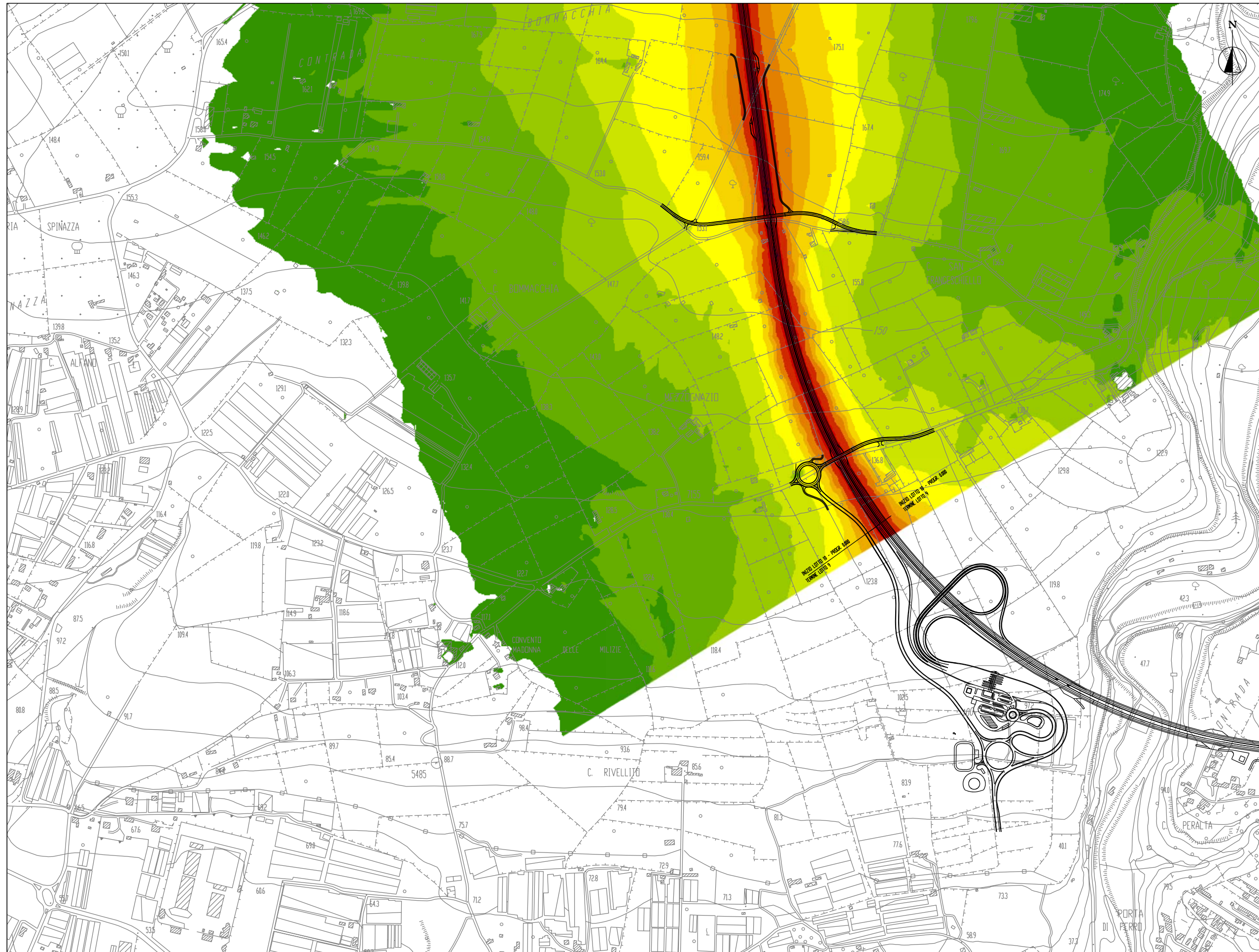


TAVOLA C1-ACU04: Mappa delle isofoniche a 4 m dal suolo del livello equivalente – periodo diurno



Modello di Propagazione del Rumore

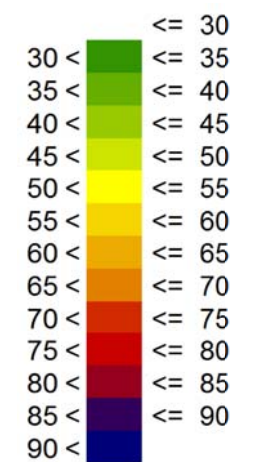
Lotto 10 - "Irminio"

Fase di Esercizio

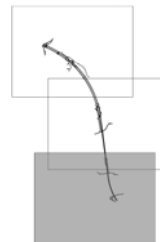
Legenda

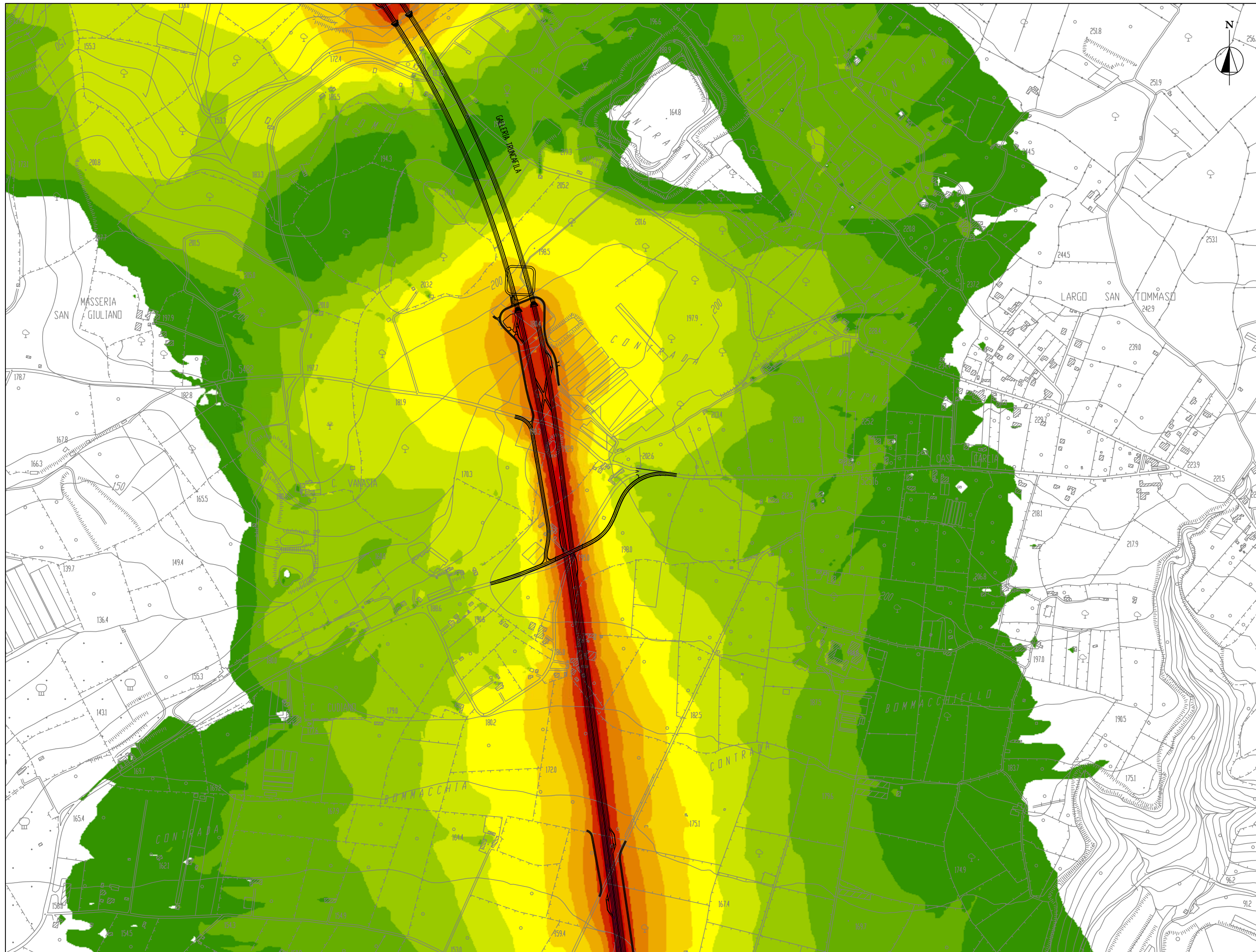
Livello equivalente diurno
(mappa a 4.0 m)

LDay (06-22)
(dB(A))



Keymap





Modello di Propagazione del Rumore

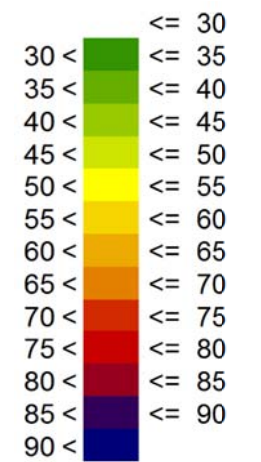
Lotto 10 - "Irminio"

Fase di Esercizio

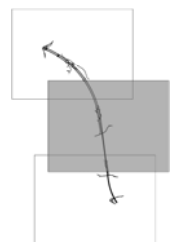
Legenda

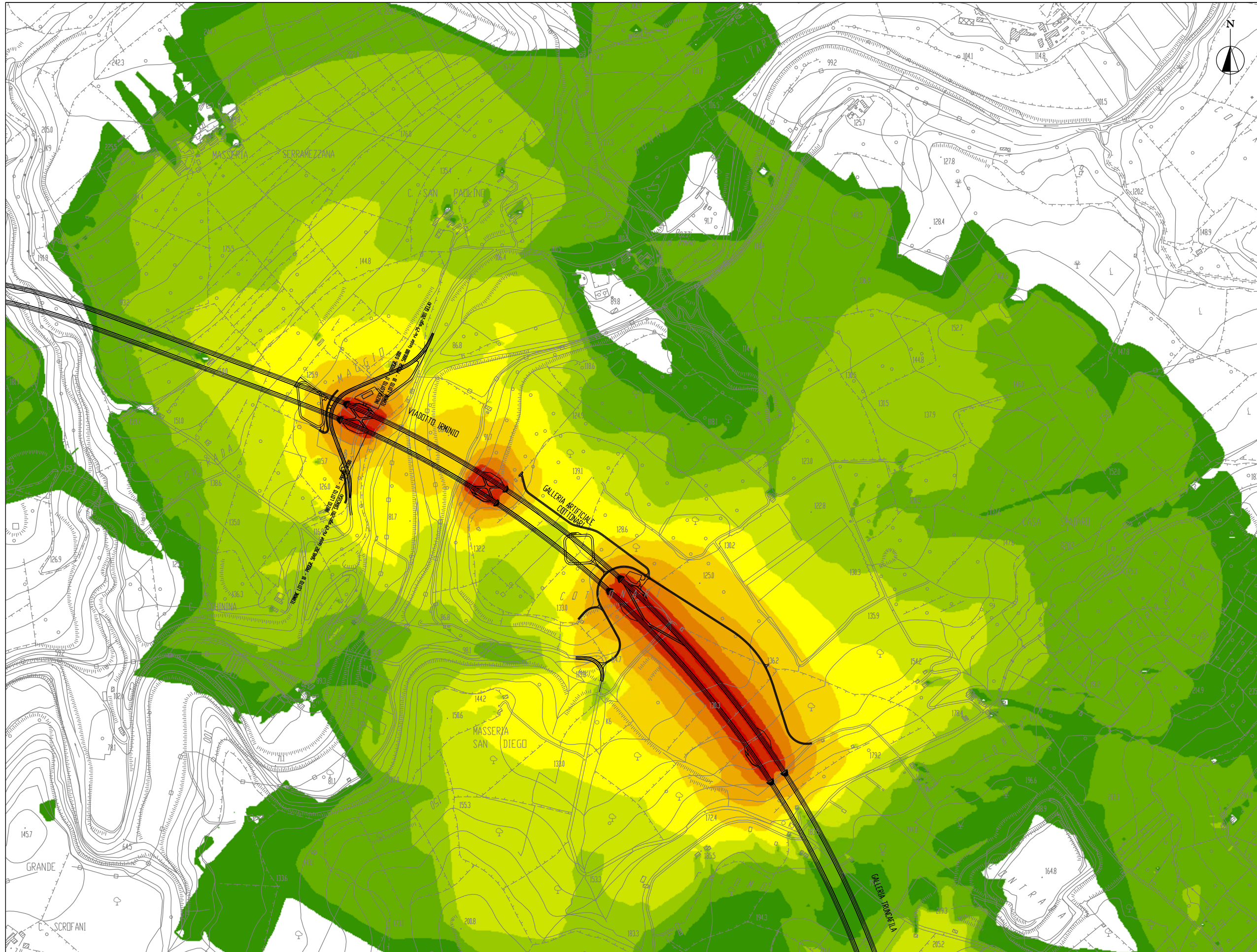
Livello equivalente diurno
(mappa a 4.0 m)

LDay (06-22)
(dB(A))



Keymap





Modello di Propagazione del Rumore

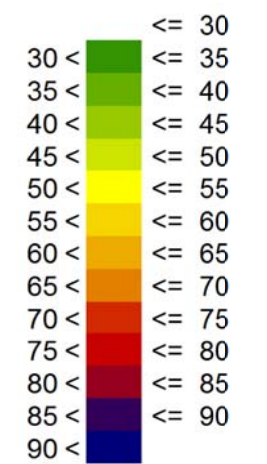
Lotto 10 - "Irmínio"

Fase di Esercizio

Legenda

Livello equivalente diurno
(mappa a 4.0 m)

LDay (06-22)
(dB(A))



Keymap

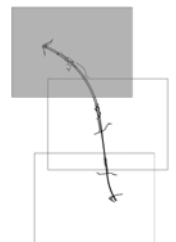
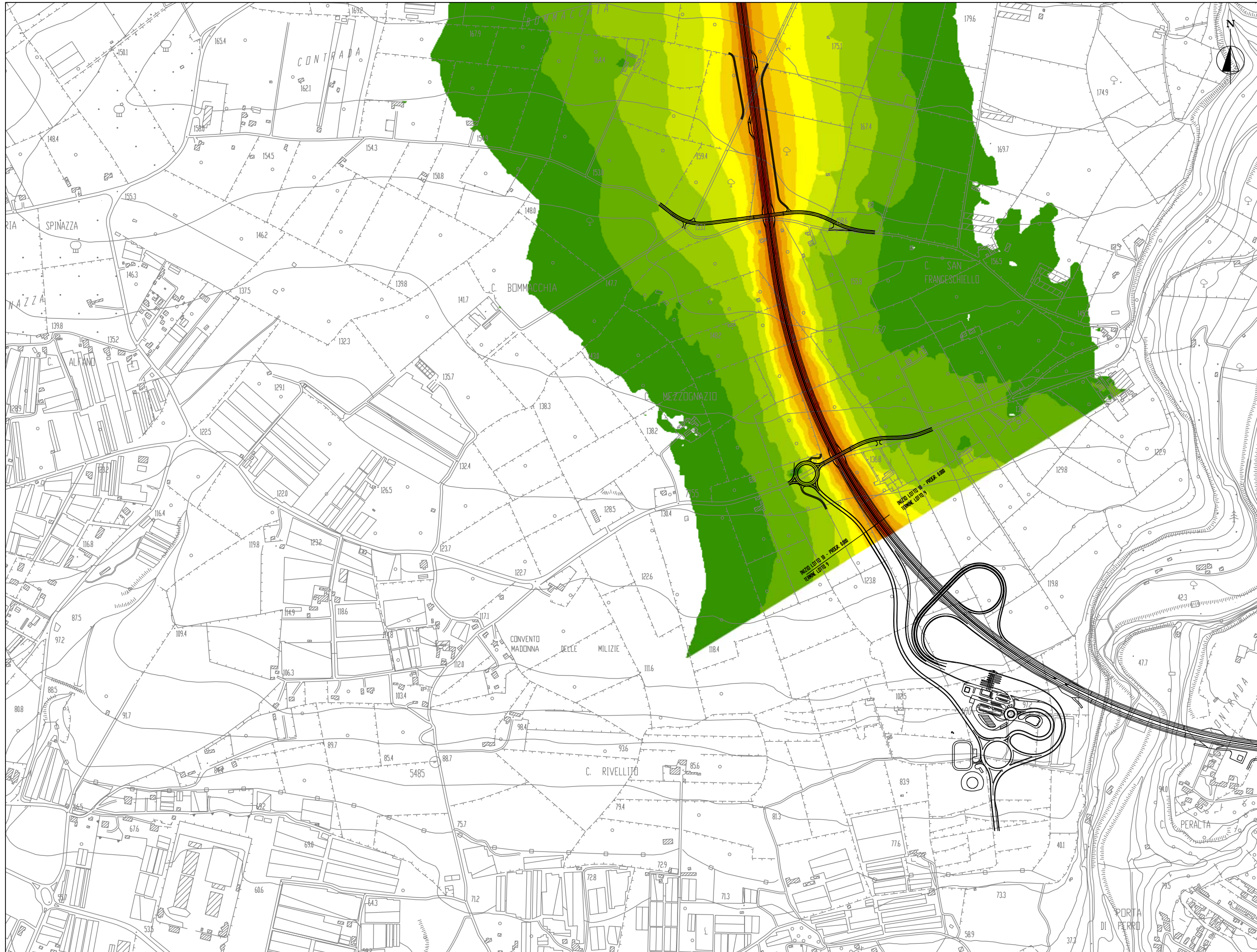


TAVOLA C1-ACU05: Mappa delle isofoniche a 4 m dal suolo del livello equivalente – periodo notturno



Modello di Propagazione del Rumore

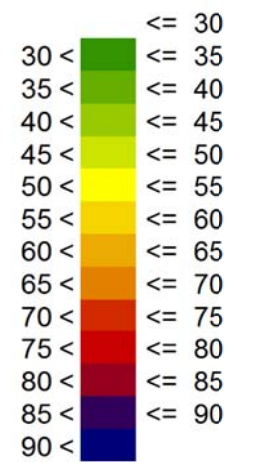
Lotto 10 - "Irminio"

Fase di Esercizio

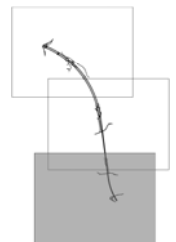
Legenda

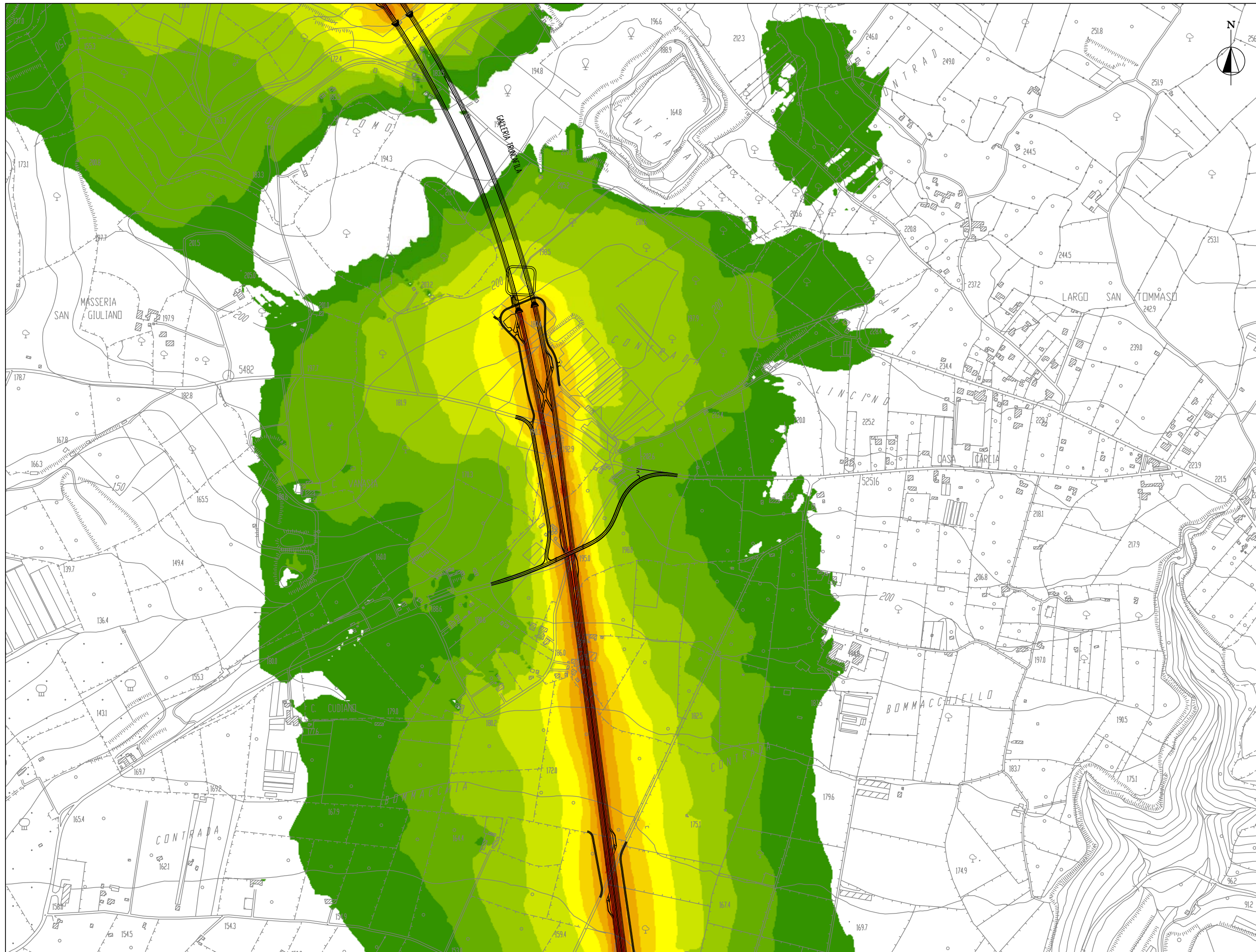
Livello equivalente notturno
(mappa a 4.0 m)

LNight (22-06)
(dB(A))



Keymap





Modello di Propagazione del Rumore

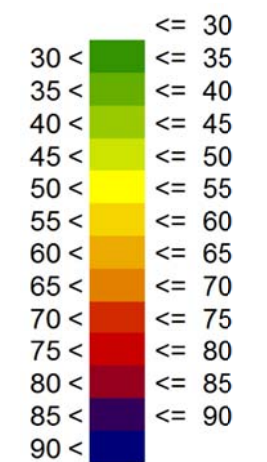
Lotto 10 - "Irmínio"

Fase di Esercizio

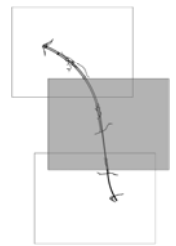
Legenda

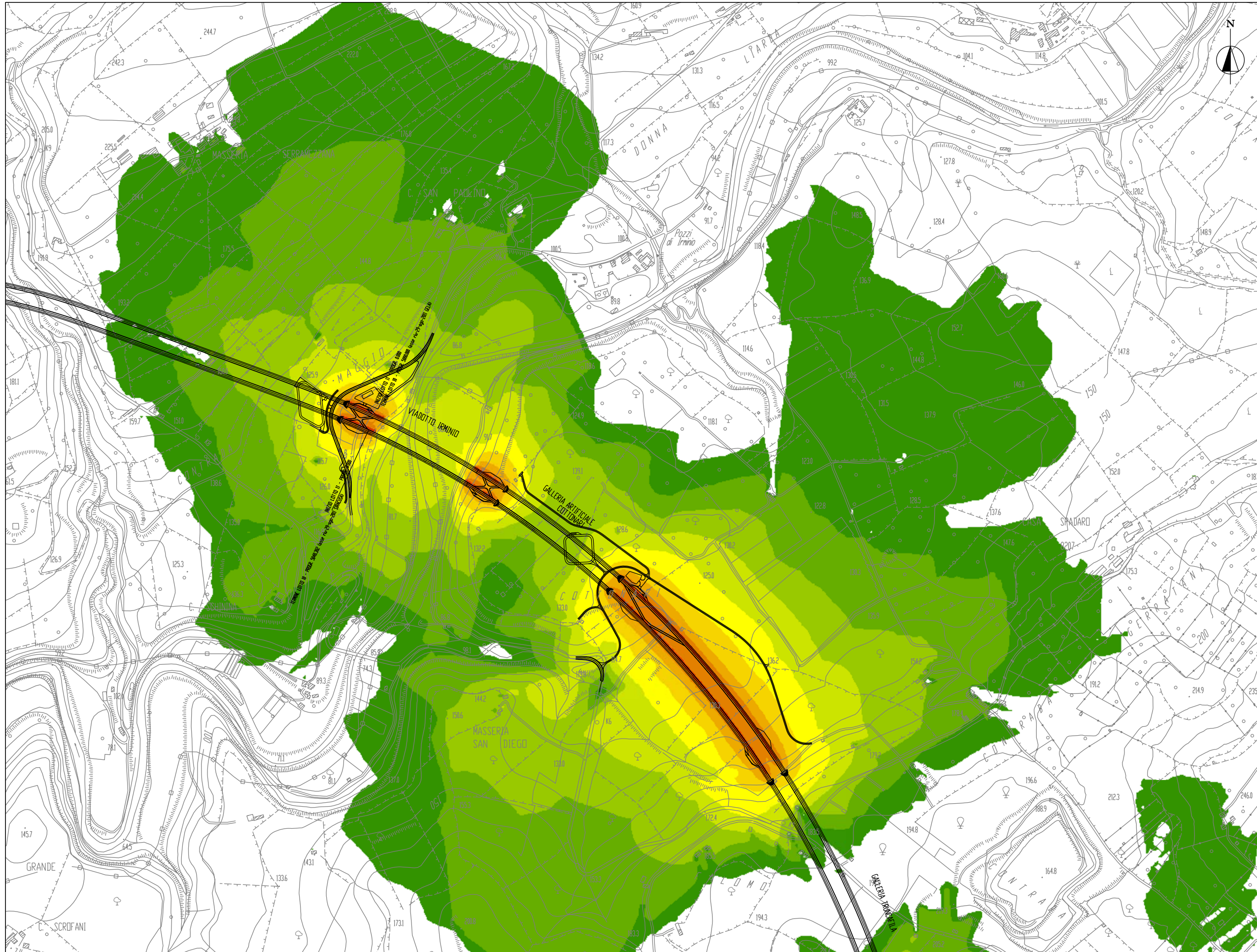
Livello equivalente notturno
(mappa a 4.0 m)

LNight (22-06)
(dB(A))



Keymap





Modello di Propagazione del Rumore

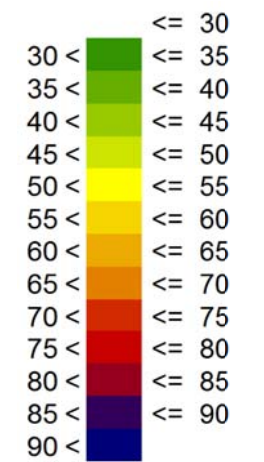
Lotto 10 - "Irmínio"

Fase di Esercizio

Legenda

Livello equivalente notturno
(mappa a 4.0 m)

L_{Night} (22-06)
(dB(A))



Keymap

