

Company: ENI U&TS

Well: Naomi 4 Dir

Field: Naomi-Pandora

LOG: FSMT-E

Country: Italy

FSMT-E Run #11 Formation Subsidence Monitoring Tool Log interval 3160 – 3065m

LOG: FSMT-E
Field: Naomi-Pandora
Location: Adriatic Sea
Well: Naomi 4 Dir
Company: ENI U&TS

LOCATION	
Adriatic Sea	Elev.: K.B. _____ G.L. -36.00 m D.F. 33.00 m
Permanent Datum: _____	MSL _____ Elev.: <u>0.00 m</u>
Log Measured From: _____	DF _____ 33.00 m above Perm. Datum
Drilling Measured From: _____	DF _____

RIG: Rigless-MAST	Max. Well Deviation 40.8 deg	Longitude 12 50' 51.477" E	Latitude 44 41' 18.308" N
-------------------	---------------------------------	-------------------------------	------------------------------

Logging Date	15-Dec-2021
Run Number	11 FSMT
Depth Driller	3200 m
Schlumberger Depth	3160 m
Bottom Log Interval	3160 m
Top Log Interval	3065 m
Casing Fluid Type	Production Fluid
Salinity	
Density	1.25 g/cm3
Fluid Level	50 m
BIT/CASING/TUBING STRING	
Bit Size	8.500 in
From	1763 m
To	3200 m
Casing/Tubing Size	7.000 in
Weight	35 lbm/ft
Grade	P110
From	0 m
To	3198 m
Maximum Recorded Temperatures	38 degC
Logger On Bottom	15-Nov-2021
Unit Number	3816
Recorded By	L. Ciulli
Witnessed By	M. De Petrillo

		Run 1	Run 2	Run 3
PVT DATA				
Oil Density				
Water Salinity				
Gas Gravity				
Bo				
Bw				
1/Bg				
Bubble Point Pressure				
Bubble Point Temperature				
Solution GOR				
Maximum Deviation	40.8 deg			
CEMENTING DATA				
Primary/Squeeze	Primary			
Casing String No				
Lead Cement Type				
Volume				
Density				
Water Loss				
Additives				
Tail Cement Type				
Volume				
Density				
Water Loss				
Additives				
Expected Cement Top				
Logging Date				
Run Number				
Depth Driller				
Schlumberger Depth				
Bottom Log Interval				
Top Log Interval				
Casing Fluid Type				
Salinity				
Density				
Fluid Level				
BIT/CASING/TUBING STRING				
Bit Size				
From				
To				
Casing/Tubing Size				
Weight				
Grade				
From				
To				
Maximum Recorded Temperatures				
Logger On Bottom				
Unit Number				
Recorded By				
Witnessed By				

DEPTH SUMMARY LISTING

Date Created: 15-DEC-2021 9:52:40

Depth System Equipment

Depth Measuring Device	Tension Device	Logging Cable
Type: IDW-JA Serial Number: 6815 Calibration Date: 30-Nov-2020 Calibrator Serial Number: 46 Calibration Cable Type: 1-23ZA Wheel Correction 1: -3 Wheel Correction 2: -2	Type: CMTD-B/A Serial Number: 1798 Calibration Date: 11-Nov-2021 Calibrator Serial Number: 1214 Number of Calibration Points: 10 Calibration RMS: 3 Calibration Peak Error: 7	Type: 2-23ZT Serial Number: 212071 Length: 6000 M Conveyance Method: Wireline Rig Type: Rigless

Depth Control Parameters

Log Sequence:	Subsequent Trip To the Well
Reference Log Name:	FSMT-E RUN #10
Reference Log Run Number:	
Reference Log Date:	11-Dec-2018
Subsequent Trip Down Log Correction:	

Depth Control Remarks

1. All SLB depth policy followed
2. IDW used as primary depth control, Z-chart as secondary
3.
4.
5.
6.

DISCLAIMER

THE USE OF AND RELIANCE UPON THIS RECORDED-DATA BY THE HEREIN NAMED COMPANY (AND ANY OF ITS AFFILIATES, PARTNERS, REPRESENTATIVES, AGENTS, CONSULTANTS AND EMPLOYEES) IS SUBJECT TO THE TERMS AND CONDITIONS AGREED UPON BETWEEN SCHLUMBERGER AND THE COMPANY, INCLUDING: (a) RESTRICTIONS ON USE OF THE RECORDED-DATA; (b) DISCLAIMERS AND WAIVERS OF WARRANTIES AND REPRESENTATIONS REGARDING COMPANY'S USE OF AND RELIANCE UPON THE RECORDED-DATA; AND (c) CUSTOMER'S FULL AND SOLE RESPONSIBILITY FOR ANY INFERENCE DRAWN OR DECISION MADE IN CONNECTION WITH THE USE OF THIS RECORDED-DATA.



OTHER SERVICES1	OTHER SERVICES2
OS1: None	OS1:
OS2:	OS2:
OS3:	OS3:
OS4:	OS4:
OS5:	OS5:
REMARKS: RUN NUMBER 1	REMARKS: RUN NUMBER 2
Log objective: Monitoring formation subsidence by Time Laps technique	
Log correlated with FSMT-E Run #10 performed on 11-Dec-2018	
Tool ID 1.69in, weak point orange 1050-1350lbf. Tool zero at bottom	
Total of three passes performed all @ 300ft/hr	
Two passes performed on 14-Dec-2021	

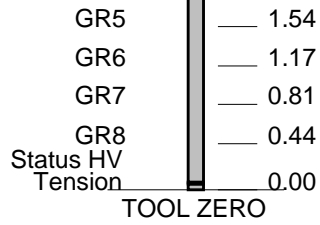
Third pass performed on 15-Dec-2021	
Before calibration performed on 20-Oct-2021	
After calibration performed on 18-Oct-2022	
Rig floor to Tubing Hanger 13.4m	
WHP: 0 bar	
Adapter flange 2 9/16in 5K, single with HGT above (WHE configuration)	

RUN 1			RUN 2		
SERVICE ORDER #:	A.1000809.04.02		SERVICE ORDER #:		
PROGRAM VERSION:	19C2-270		PROGRAM VERSION:		
FLUID LEVEL:	50 m		FLUID LEVEL:		
LOGGED INTERVAL	START	STOP	LOGGED INTERVAL	START	STOP

EQUIPMENT DESCRIPTION

RUN 1	RUN 2
SURFACE EQUIPMENT	
WITM-A PSC_16MHZ	

DOWNHOLE EQUIPMENT			
MH-22 MH-22			15.79
AH-38	Detail MT		15.31
PSPT	TelStatus		
PSC-A	CTEM	— 15.23	15.23
PSPT-B 3787			
PSTC-A			
PBMS-B	GR	— 14.10	
CQG_F_Mano			
RTD_Thermometer			
GR	Well_Temp	/ 13.17	
CCL	CQG Manom	/ 13.06	
PBMS	CCL	/ 12.93	
	PBMS PSTC	— 12.71	
FSMT-E			12.71
FSMD-B 701			
FSMX-A 705			
FSMX-A 703			
FSMX-A 701	Acc, GR1	— 11.52	
FSMD-C 701			
BN	GR2	— 11.15	
	GR3	— 10.79	
	GR4	— 10.42	



MAXIMUM STRING DIAMETER 1.69 IN
 MEASUREMENTS RELATIVE TO TOOL ZERO
 ALL LENGTHS IN METERS



Job event summary

MAXIS Field Log

Schlumberger Job Event Summary

	Time	Elapsed Time	Depth (M)	File
Descent 1: FSMT-E/PSPT				
Begin Descent	14-Nov-2021 10:45			
Descent 2: FSMT-E/PSPT				
Begin Descent	15-Nov-2021 9:30			
Log Pass (up)	14-Dec-2021 12:35	001:02	3160.0 - 3065.1	FSMT_PSP_007LUP
Log Pass (up)	14-Dec-2021 13:42	001:03	3160.0 - 3065.1	FSMT_PSP_008LUP
Log Pass (up)	15-Dec-2021 11:12	001:03	3159.9 - 3065.1	FSMT_PSP_013LUP



Final result

MAXIS Field Log

```

Well Name: Naomi 4 Dir
Run Date : 15-Dec-2021
Zone Name: PASS1&2&3 YES
Tool String: FSMT-E S/N 701
Reference Detector: DET1
File 0: FSMT_9.fsf (Reference File)
File 1: FSMT_10.fsf
File 2: FSMT_14.fsf

```

20-Oct-2021 : Calibrated Detector Spacings at 3.5°C (m):

```

D12 = 0.369054
D23 = 0.368874
D34 = 0.368310
D45 = 8.895207
D56 = 0.367924
D67 = 0.367093
D78 = 0.369872

```

Marker spacings for each pass :

Distance in m between a marker and the adjacent marker below
Standard Deviation always in mm

Results on all 3 passes in m :

#	Depth	Spacing Avg. (~21 Meas.)	Std Dev (3 passes)
- 0	3140.70		
1	3135.60		
2	3130.50	10.14360	1.32260
3	3125.49	10.07070	0.52797
4	3120.37	10.09932	3.76950
5	3115.27	10.20106	0.97140
6	3109.23	11.11436	2.35447
7	3104.28	10.97202	1.80797
8	3099.10	10.13356	0.14095
9	3094.01	10.25795	1.46842
10	3088.88	10.21115	1.58214
- 11	3083.86	10.16452	0.25731

All Peaks were automatically detected with the following parameters:

```

FSMT_FIT = GAUSSIAN
FSMT_FILTER = 200
FSMT_THRESHOLD = 120

```

Company: ENI U&TS

Well: Naomi 4 Dir

Input DLIS Files

DEFAULT	FSMT_PSP_007LUP	FN:10	PRODUCER	14-Dec-2021 12:35	3160.0 M	3065.1 M
---------	-----------------	-------	----------	-------------------	----------	----------

Output DLIS Files

DEFAULT	FSMT_PSP_009PUP	FN:16	PRODUCER	14-Dec-2021 15:01	3160.5 M	3065.5 M
COSTUMER	FSMT_PSP_009PUC	FN:17	CUSTOMER	14-Dec-2021 15:01	3160.5 M	3065.5 M
RTB	FSMT_PSP_009PUP	FN:18	PRODUCER	14-Dec-2021 15:01	3160.5 M	3065.5 M

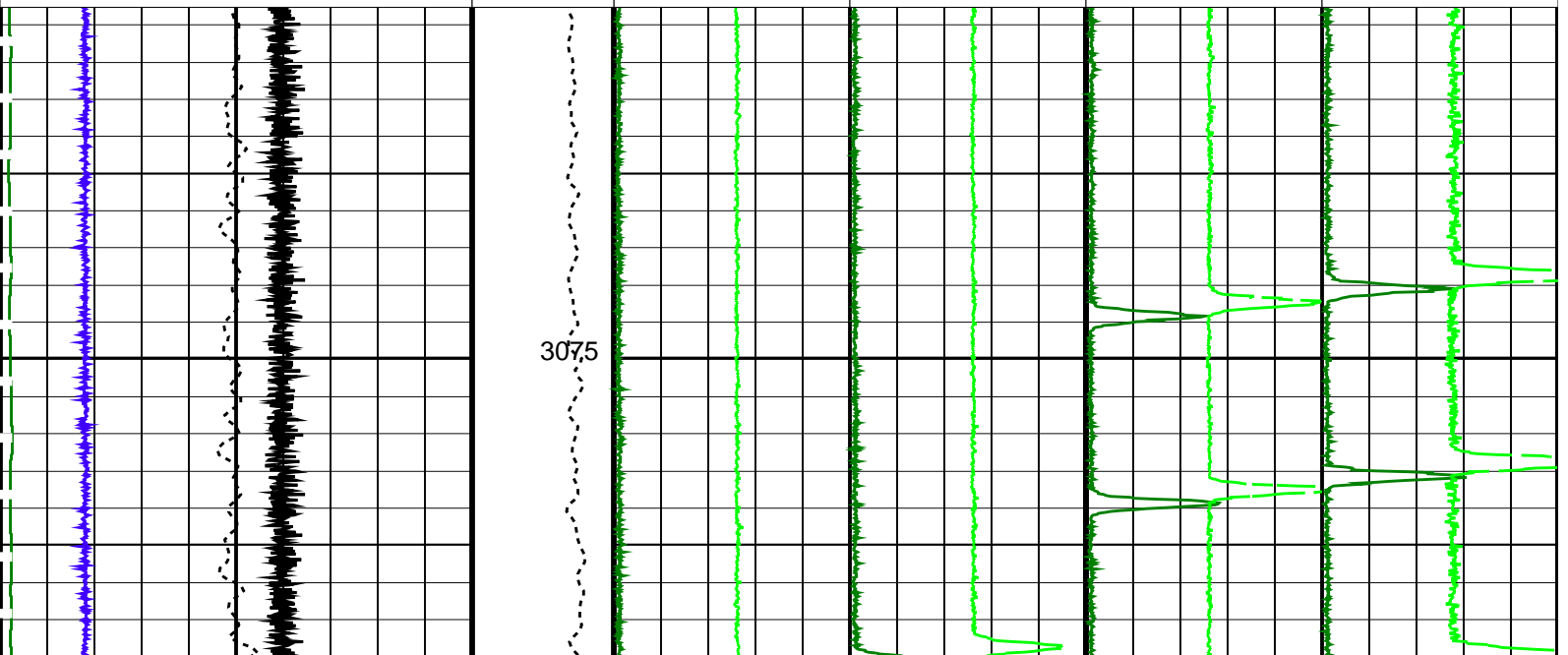
OP System Version: 19C2-270

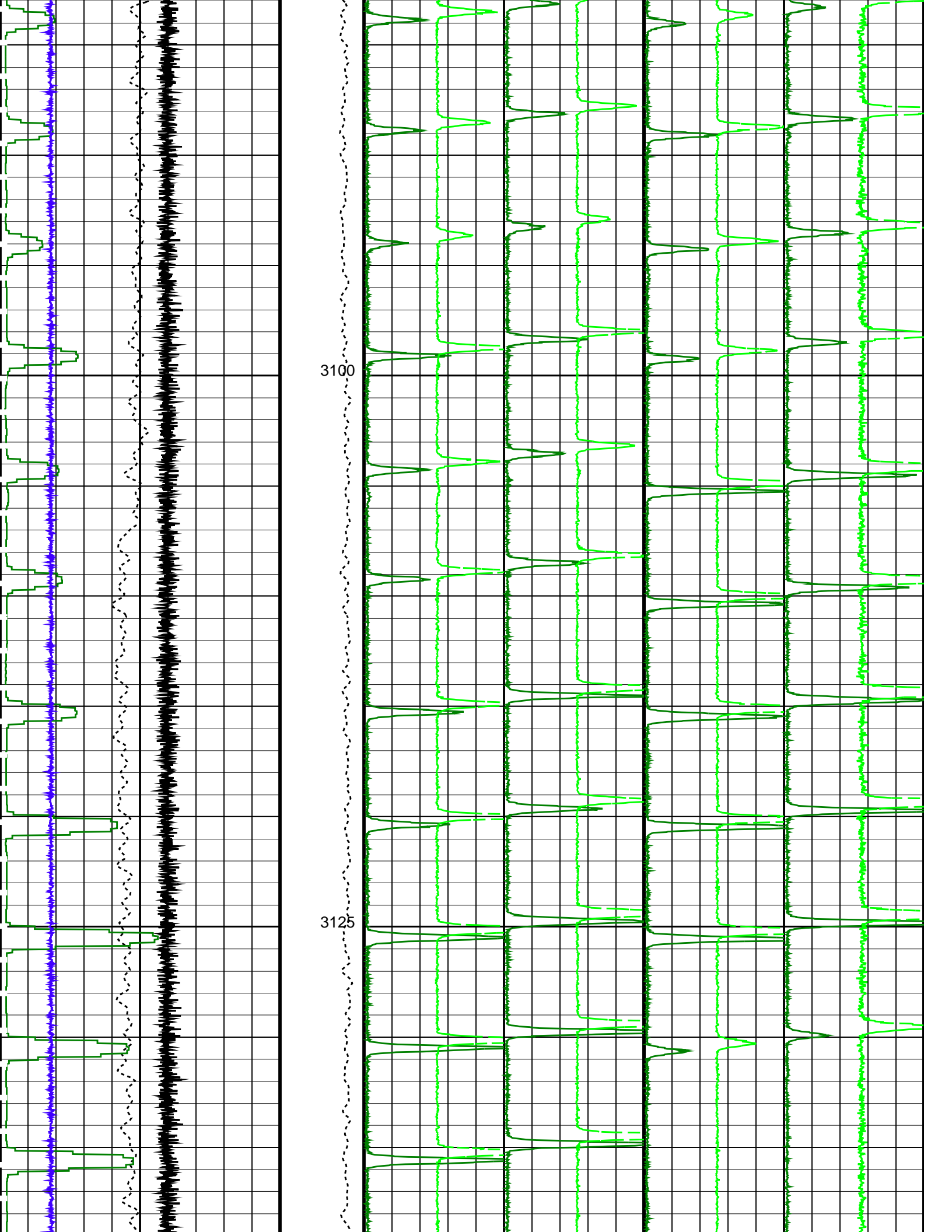
FSMT-E	SRPC-FSMTE-JUNE_2013_OP19C2H1	PSPT	19C2-270
--------	-------------------------------	------	----------

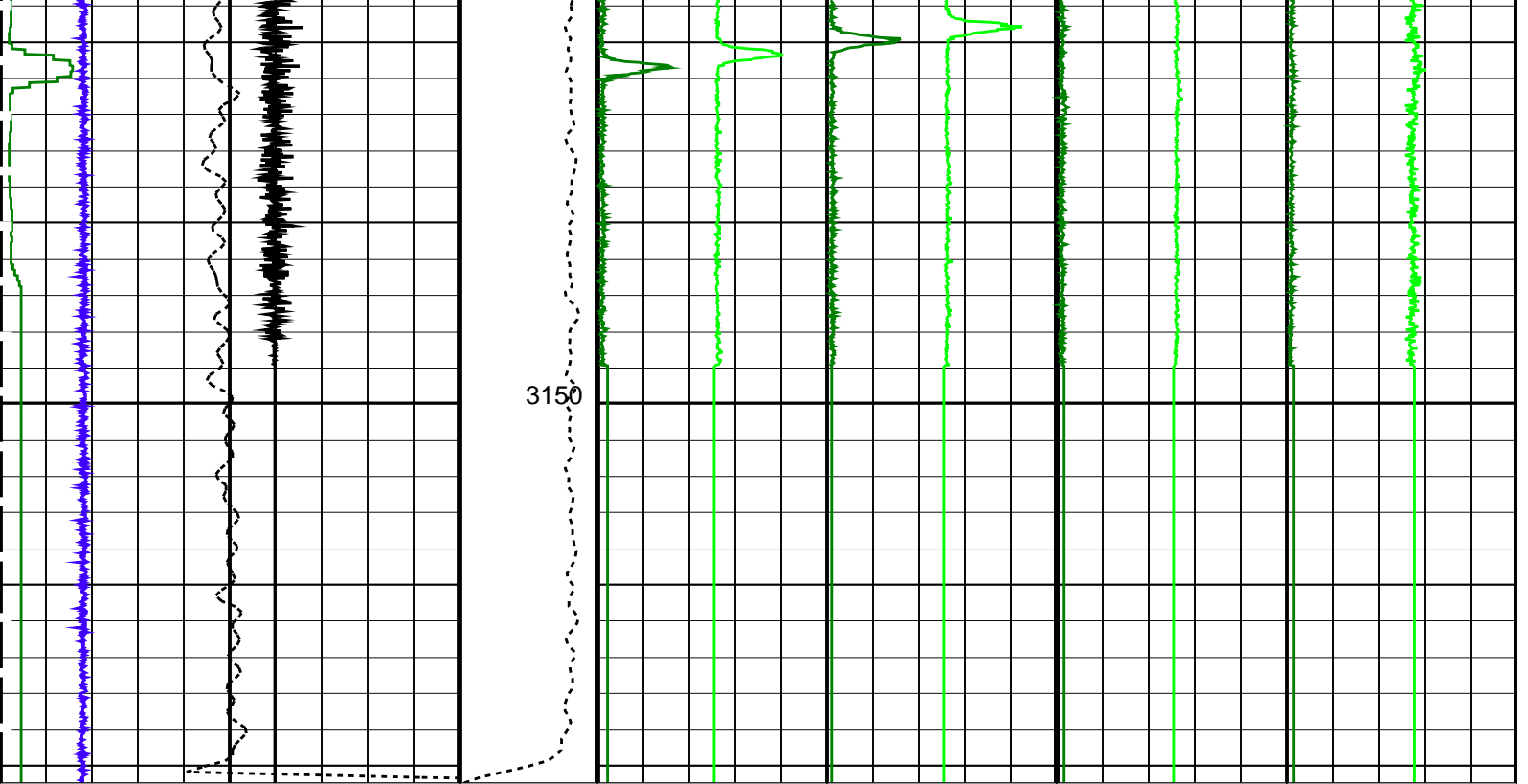
PIP SUMMARY

Time Mark Every 60 S

FSMT Detector Temperature (FSMT_DTEM) 0 (DEGC) 200					
PBMS Gamma Ray (GR) 0 (GAPI) 2000					
Cable Speed (CS) 350 (F/HR) 250		Gamma Ray 2 (GR2) -1250 (CPS) 1250	Gamma Ray 4 (GR4) -1250 (CPS) 1250	FSMT GR6 (GR6) -1250 (CPS) 1250	FSMT GR8 (GR8) -1250 (CPS) 1250
FSMT Acceleration (FSMT_ACC) 7 (M/S2) 12		Gamma Ray 1 (GR1) 0 (CPS) 2500	Gamma Ray 3 (GR3) 0 (CPS) 2500	FSMT GR5 (GR5) 0 (CPS) 2500	FSMT GR7 (GR7) 0 (CPS) 2500
Tension (TENS) (LBF) 0 200					







FSMT Acceleration (FSMT_ACC) (M/S2)	7	12	Tension (TENS) (LBF)	0	200	Gamma Ray 1 (GR1) (CPS)	0	2500	Gamma Ray 3 (GR3) (CPS)	0	2500	FSMT GR5 (GR5) (CPS)	0	2500	FSMT GR7 (GR7) (CPS)	0	2500
Cable Speed (CS) (F/HR)	350	250				Gamma Ray 2 (GR2) (CPS)	-1250	1250	Gamma Ray 4 (GR4) (CPS)	-1250	1250	FSMT GR6 (GR6) (CPS)	-1250	1250	FSMT GR8 (GR8) (CPS)	-1250	1250
PBMS Gamma Ray (GR) (GAPI)	0	2000															
FSMT Detector Temperature (FSMT_DTEM) (DEGC)	0	200															

PIP SUMMARY

Time Mark Every 60 S

Parameters

DLIS Name	Description	Value
DO	System and Miscellaneous	
PP	Depth Offset for Playback	0.4 M
	Playback Processing	NORMAL

Format: FSMT_Basic Vertical Scale: 1:200 Graphics File Created: 14-Dec-2021 15:01

OP System Version: 19C2-270

FSMT-E SRPC-FSMTE-JUNE_2013_OP19C2H1 PSPT 19C2-270

Input DLIS Files

DEFAULT FSMT_PSP_007LUP FN:10 PRODUCER 14-Dec-2021 12:35 3160.0 M 3065.1 M

Output DLIS Files

DEFAULT FSMT_PSP_009PUP FN:16 PRODUCER 14-Dec-2021 15:01
 COSTUMER FSMT_PSP_009PUC FN:17 CUSTOMER 14-Dec-2021 15:01
 RTB FSMT_PSP_009PUP FN:18 PRODUCER 14-Dec-2021 15:01

Company: ENI U&TS Well: Naomi 4 Dir

Input DLIS Files

DEFAULT	FSMT_PSP_008LUP	FN:13	PRODUCER	14-Dec-2021 13:42	3160.0 M	3065.1 M
---------	-----------------	-------	----------	-------------------	----------	----------

Output DLIS Files

DEFAULT	FSMT_PSP_010PUP	FN:19	PRODUCER	14-Dec-2021 15:02	3160.5 M	3065.5 M
COSTUMER	FSMT_PSP_010PUC	FN:20	CUSTOMER	14-Dec-2021 15:02	3160.5 M	3065.5 M
RTB	FSMT_PSP_010PUP	FN:21	PRODUCER	14-Dec-2021 15:02	3160.5 M	3065.5 M

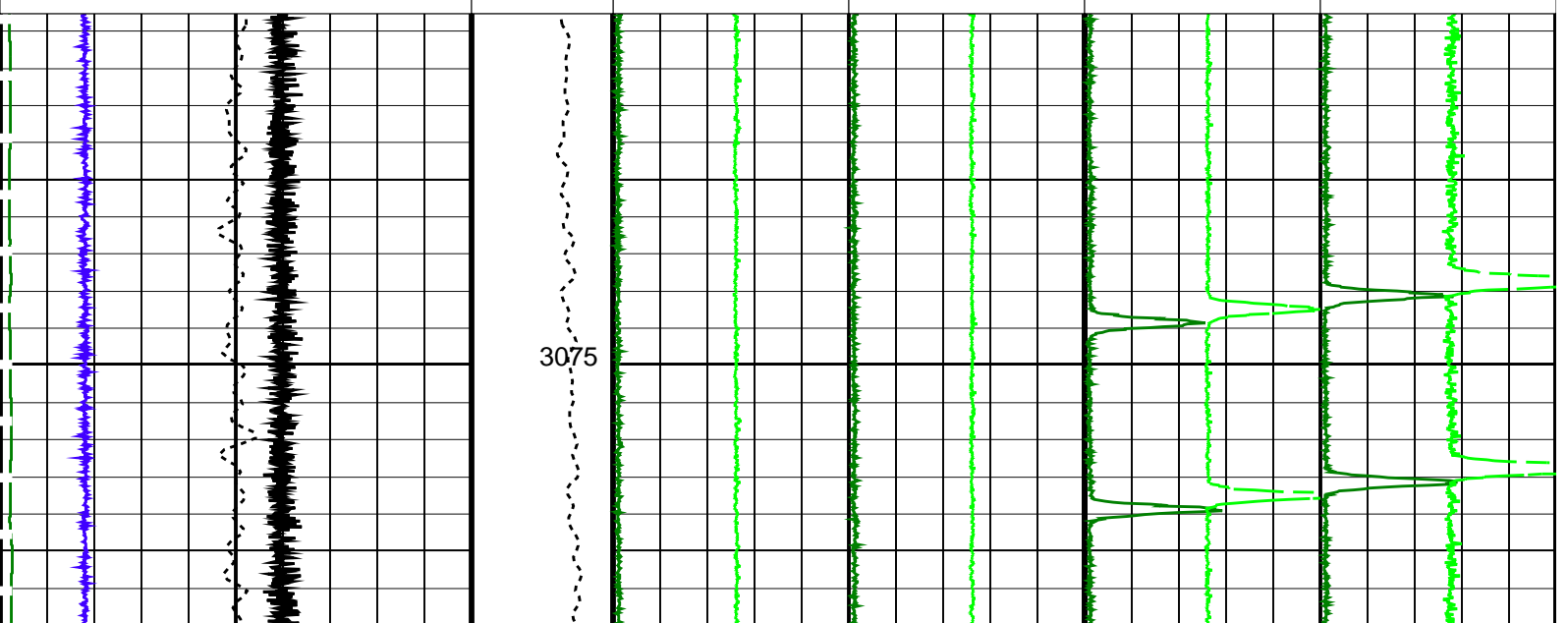
OP System Version: 19C2-270

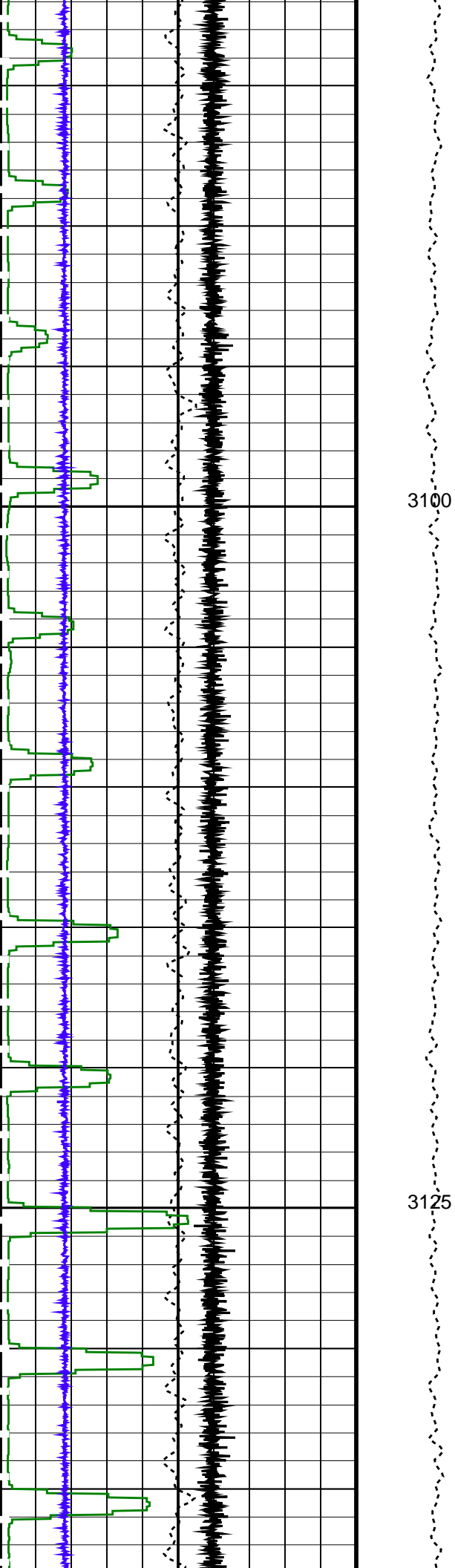
FSMT-E	SRPC-FSMTE-JUNE_2013_OP19C2H1	PSPT	19C2-270
--------	-------------------------------	------	----------

PIP SUMMARY

Time Mark Every 60 S

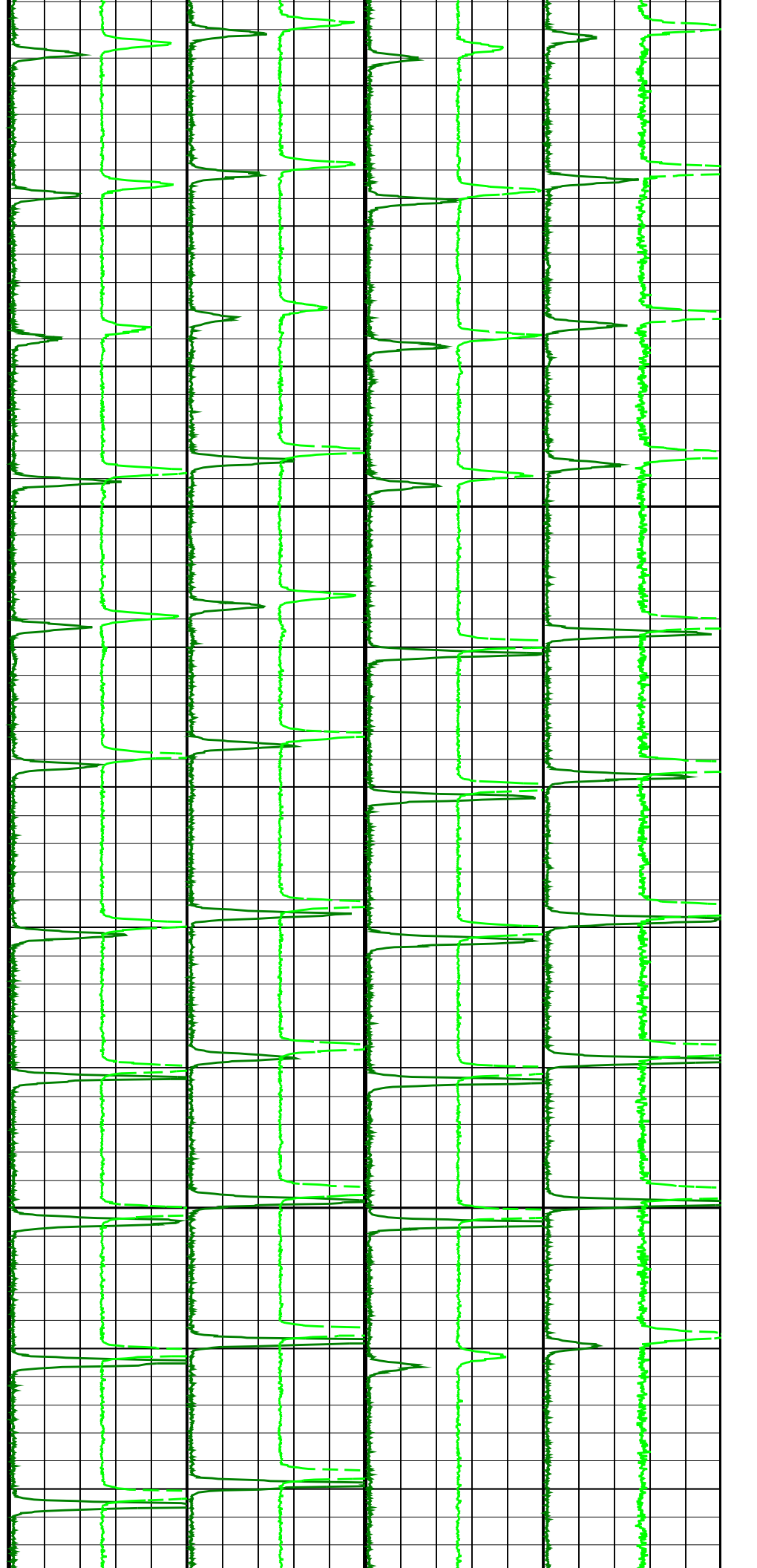
FSMT Detector Temperature (FSMT_DTEM) 0 (DEGC) 200					
PBMS Gamma Ray (GR) 0 (GAPI) 2000					
Cable Speed (CS) 350 (F/HR) 250		Gamma Ray 2 (GR2) -1250 (CPS) 1250	Gamma Ray 4 (GR4) -1250 (CPS) 1250	FSMT GR6 (GR6) -1250 (CPS) 1250	FSMT GR8 (GR8) -1250 (CPS) 1250
FSMT Acceleration (FSMT_ACC) 7 (M/S2) 12		Gamma Ray 1 (GR1) 0 (CPS) 2500	Gamma Ray 3 (GR3) 0 (CPS) 2500	FSMT GR5 (GR5) 0 (CPS) 2500	FSMT GR7 (GR7) 0 (CPS) 2500
Tension (TENS) (LBF) 0 200					

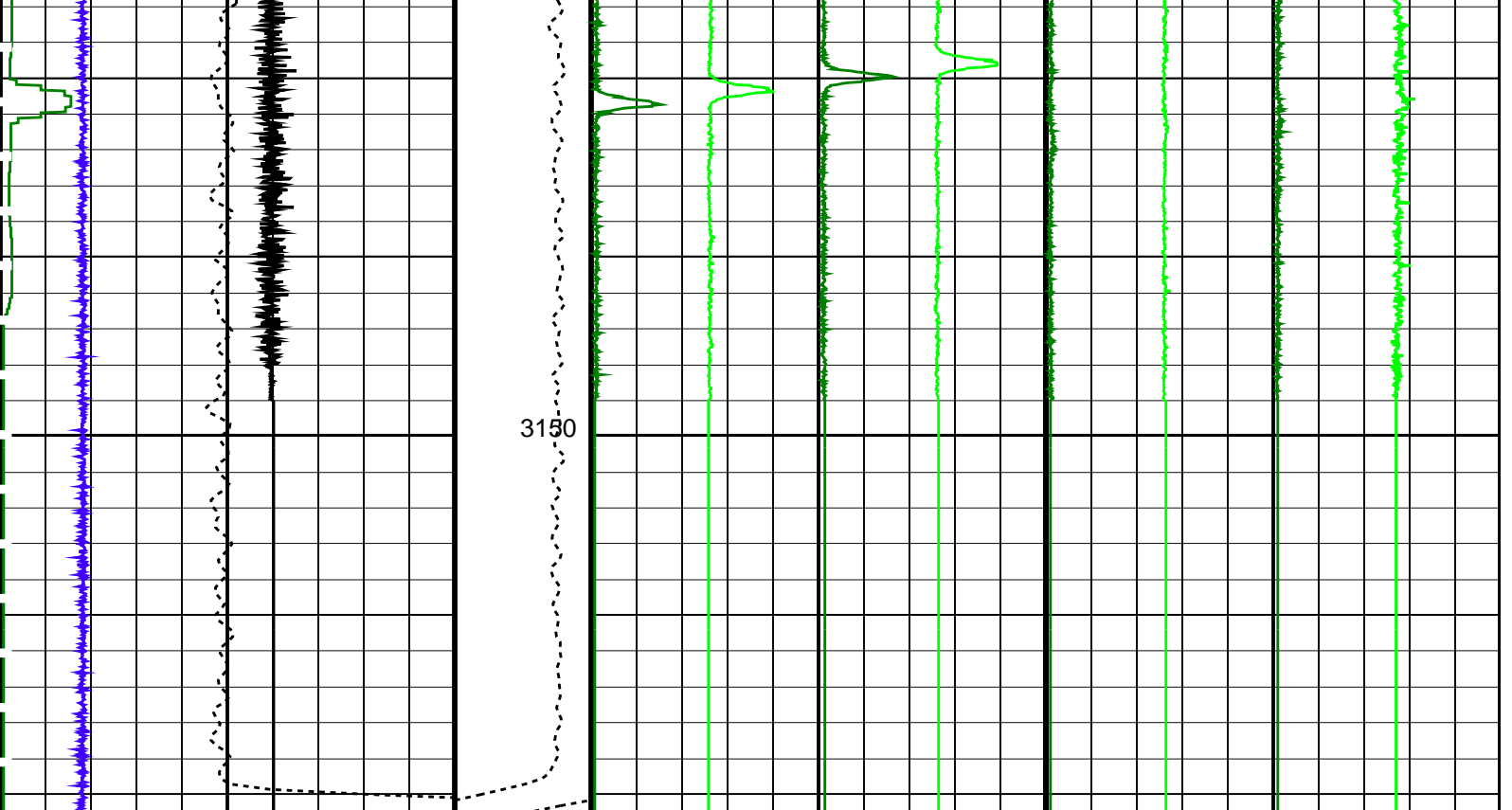




3100

3125





FSMT Acceleration (FSMT_ACC) (M/S2)	7	12	Tension (TENS) (LBF)	0	200	Gamma Ray 1 (GR1) (CPS)	2500	Gamma Ray 3 (GR3) (CPS)	2500	FSMT GR5 (GR5) (CPS)	2500	FSMT GR7 (GR7) (CPS)	2500
Cable Speed (CS) (F/HR)	350	250				Gamma Ray 2 (GR2) (CPS)	-1250	Gamma Ray 4 (GR4) (CPS)	1250	FSMT GR6 (GR6) (CPS)	-1250	FSMT GR8 (GR8) (CPS)	1250
PBMS Gamma Ray (GR) (GAPI)	0	2000											
FSMT Detector Temperature (FSMT_DTEM) (DEGC)	0	200											

PIP SUMMARY

Time Mark Every 60 S

Parameters

DLIS Name	Description	Value
DO	System and Miscellaneous	0.5 M
PP	Depth Offset for Playback Playback Processing	NORMAL

Format: FSMT_Basic Vertical Scale: 1:200 Graphics File Created: 14-Dec-2021 15:02

OP System Version: 19C2-270

FSMT-E	SRPC-FSMTE-JUNE_2013_OP19C2H1	PSPT	19C2-270
--------	-------------------------------	------	----------

Input DLIS Files

DEFAULT	FSMT_PSP_008LUP	FN:13	PRODUCER	14-Dec-2021 13:42	3160.0 M	3065.1 M
---------	-----------------	-------	----------	-------------------	----------	----------

Output DLIS Files

DEFAULT	FSMT_PSP_010PUP	FN:19	PRODUCER	14-Dec-2021 15:02		
COSTUMER	FSMT_PSP_010PUC	FN:20	CUSTOMER	14-Dec-2021 15:02		
PTP	FSMT_PSP_010PUP	FN:21	PRODUCER	14-Dec-2021 15:02		



Pass # 3
3160m – 3065m

MAXIS Field Log

Company: ENI U&TS Well: Naomi 4 Dir

Input DLIS Files

DEFAULT	FSMT_PSP_013LUP	FN:26	PRODUCER	15-Dec-2021 11:12	3159.9 M	3065.1 M
---------	-----------------	-------	----------	-------------------	----------	----------

Output DLIS Files

DEFAULT	FSMT_PSP_014PUP	FN:29	PRODUCER	15-Dec-2021 12:20	3160.2 M	3065.4 M
COSTUMER	FSMT_PSP_014PUC	FN:30	CUSTOMER	15-Dec-2021 12:20	3160.2 M	3065.4 M
RTB	FSMT_PSP_014PUP	FN:31	PRODUCER	15-Dec-2021 12:20	3160.2 M	3065.4 M

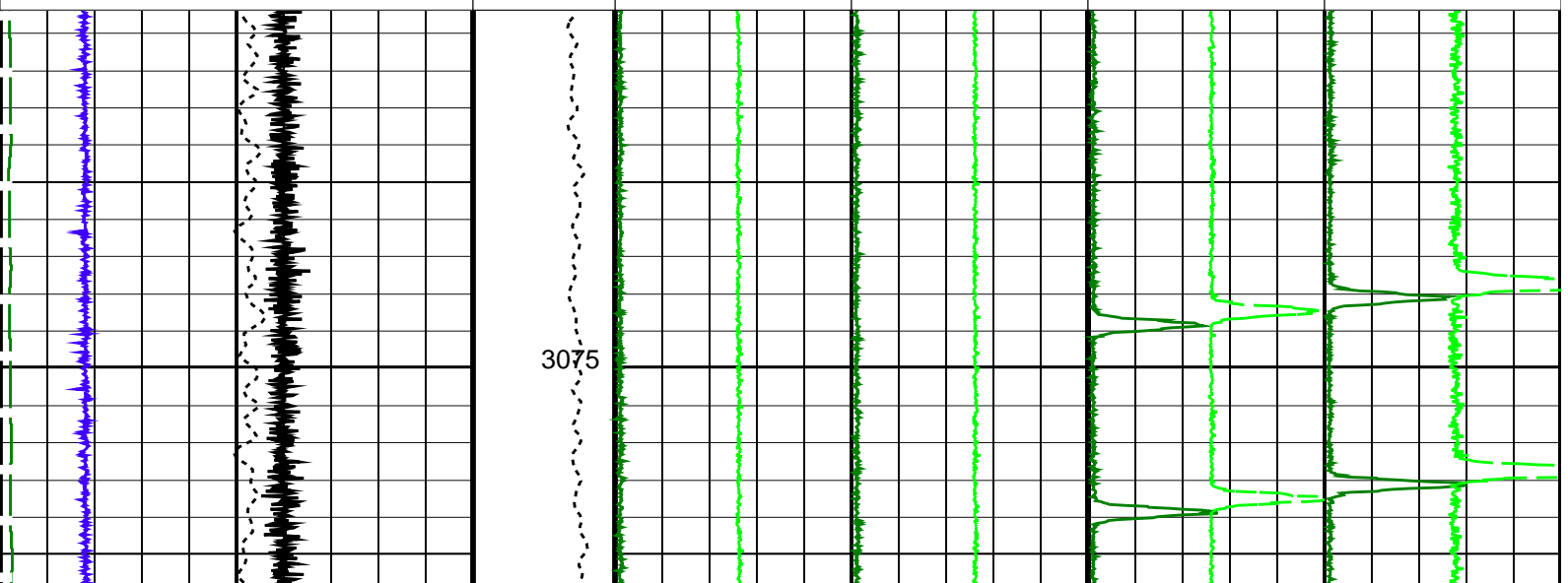
OP System Version: 19C2-270

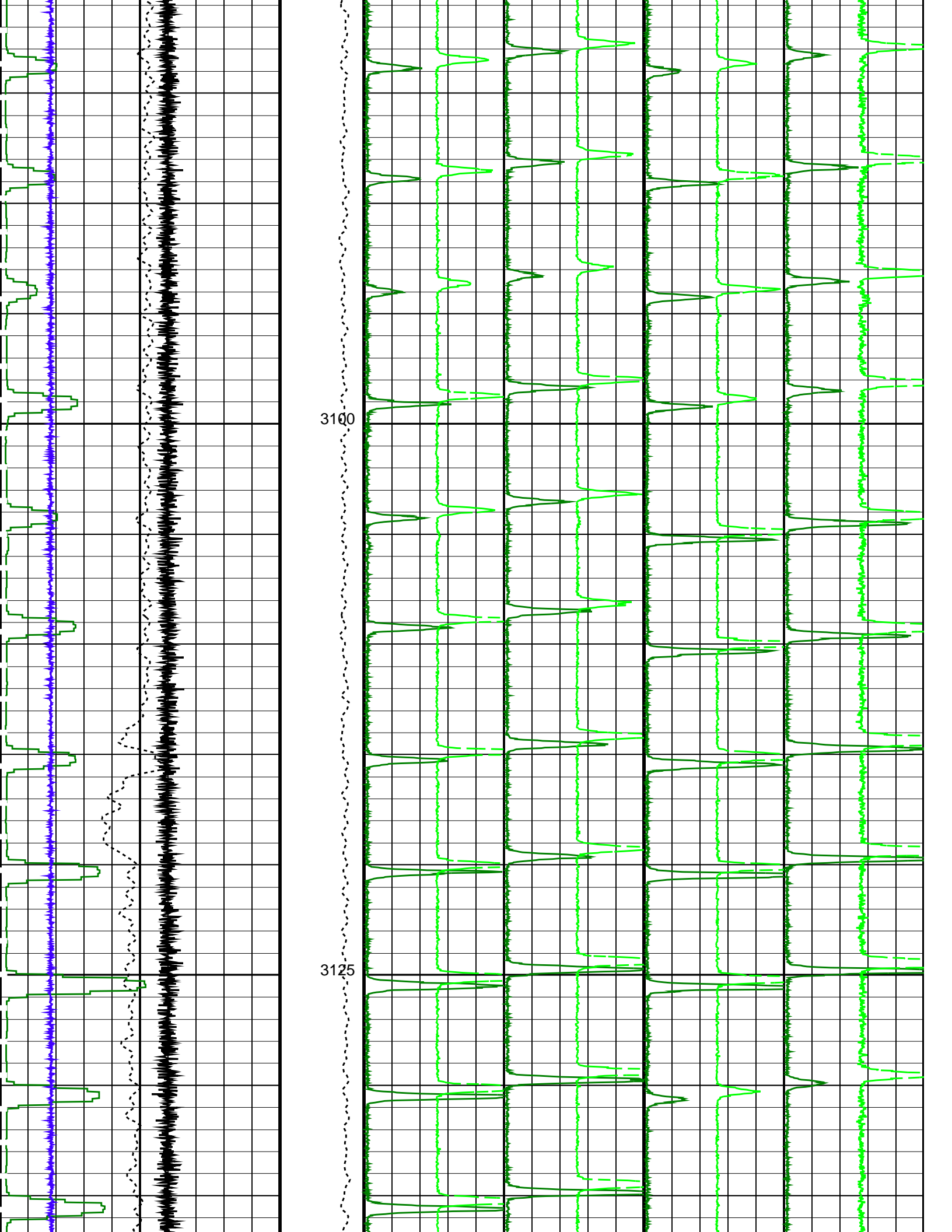
FSMT-E SRPC-FSMTE-JUNE_2013_OP19C2H1 PSPT 19C2-270

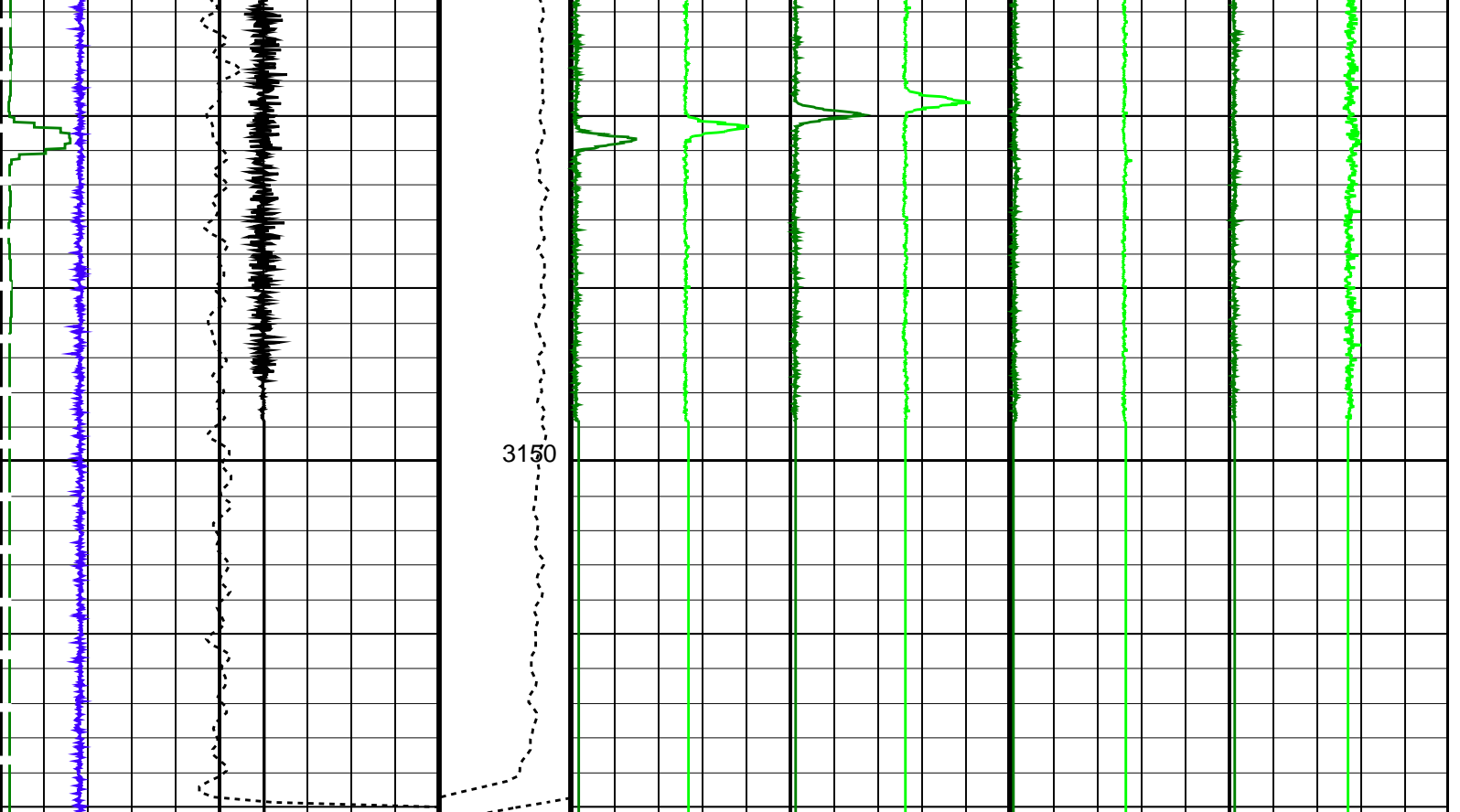
PIP SUMMARY

Time Mark Every 60 S

FSMT Detector Temperature (FSMT_DTEM) (DEGC) 0 200				
PBMS Gamma Ray (GR) (GAPI) 0 2000				
Cable Speed (CS) (F/HR) 350 250	Gamma Ray 2 (GR2) -1250 (CPS) 1250	Gamma Ray 4 (GR4) -1250 (CPS) 1250	FSMT GR6 (GR6) -1250 (CPS) 1250	FSMT GR8 (GR8) -1250 (CPS) 1250
FSMT Acceleration (FSMT_ACC) (M/S2) 7 12	Gamma Ray 1 (GR1) 0 (CPS) 2500	Gamma Ray 3 (GR3) 0 (CPS) 2500	FSMT GR5 (GR5) 0 (CPS) 2500	FSMT GR7 (GR7) 0 (CPS) 2500
Tension (TENS) (LBF) 0 200				







FSMT Acceleration (FSMT_ACC) (M/S2)	7	12	Tension (TENS) (LBF)	0	200	Gamma Ray 1 (GR1) (CPS)	0	2500	Gamma Ray 3 (GR3) (CPS)	0	2500	FSMT GR5 (GR5) (CPS)	0	2500	FSMT GR7 (GR7) (CPS)	0	2500
Cable Speed (CS) (F/HR)	350	250				Gamma Ray 2 (GR2) (CPS)	-1250	1250	Gamma Ray 4 (GR4) (CPS)	-1250	1250	FSMT GR6 (GR6) (CPS)	-1250	1250	FSMT GR8 (GR8) (CPS)	-1250	1250
PBMS Gamma Ray (GR) (GAPI)	0	2000															
FSMT Detector Temperature (FSMT_DTEM) (DEGC)	0	200															

PIP SUMMARY

Time Mark Every 60 S

Parameters

DLIS Name	Description	Value
DO	System and Miscellaneous	0.3 M
PP	Depth Offset for Playback Playback Processing	NORMAL

Format: FSMT_Basic Vertical Scale: 1:200 Graphics File Created: 15-Dec-2021 12:20

OP System Version: 19C2-270

FSMT-E	SRPC-FSMTE-JUNE_2013_OP19C2H1	PSPT	19C2-270
--------	-------------------------------	------	----------

Input DLIS Files

DEFAULT	FSMT_PSP_013LUP	FN:26	PRODUCER	15-Dec-2021 11:12	3159.9 M	3065.1 M
---------	-----------------	-------	----------	-------------------	----------	----------

Output DLIS Files

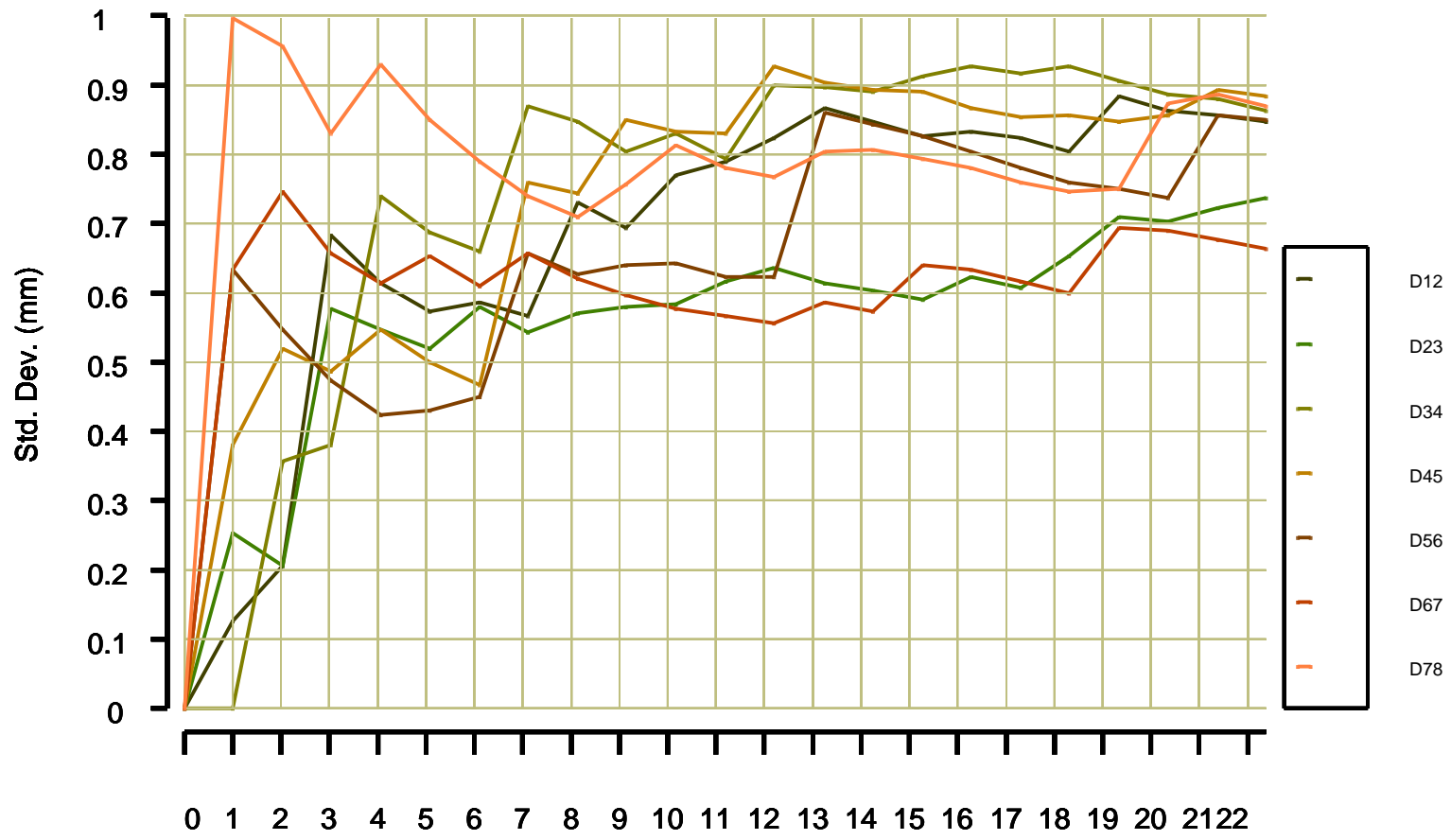
DEFAULT	FSMT_PSP_014PUP	FN:29	PRODUCER	15-Dec-2021 12:20		
COSTUMER	FSMT_PSP_014PUC	FN:30	CUSTOMER	15-Dec-2021 12:20		



Before Calibration

MAXIS Field Log

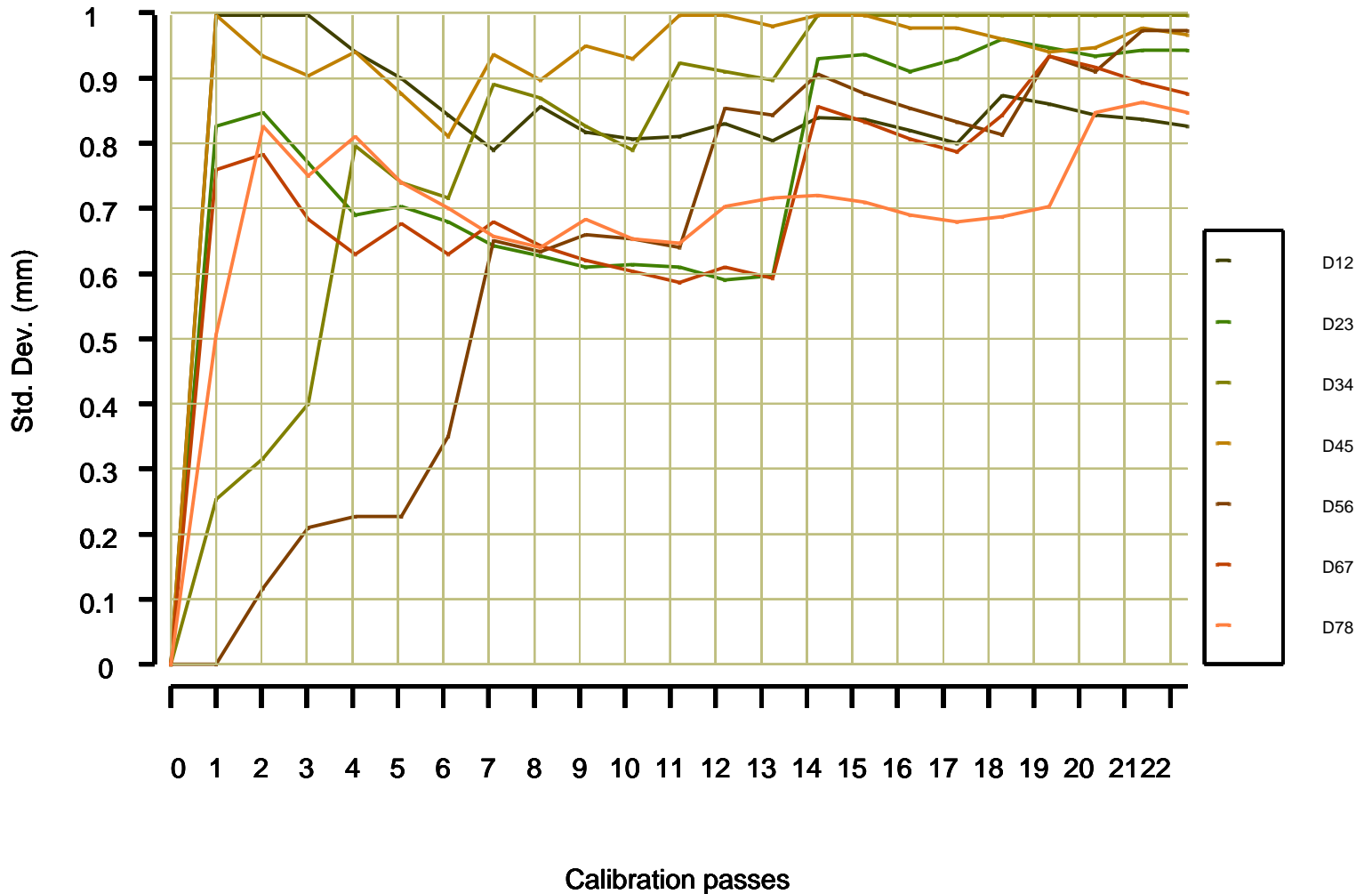
20-Oct-2021 – FSMT-E SN 701 – Cumulative Standard Deviation (at 3.5°C)



Calibration passes

- DET12 = 0.369054 m (± 0.85 mm)
- DET23 = 0.368874 m (± 0.74 mm)
- DET34 = 0.368311 m (± 0.87 mm)
- DET45 = 8.895202 m (± 0.89 mm)
- DET56 = 0.367925 m (± 0.85 mm)
- DET67 = 0.367093 m (± 0.66 mm)
- DET78 = 0.369871 m (± 0.87 mm)

18-Oct-2022 – FSMT-E SN 701 – Cumulative Standard Deviation (at 3.1°C)



DET12 = 0.369127 m (± 0.83 mm)
 DET23 = 0.368902 m (± 0.94 mm)
 DET34 = 0.368002 m (± 1.14 mm)
 DET45 = 8.895257 m (± 0.97 mm)
 DET56 = 0.368223 m (± 0.97 mm)
 DET67 = 0.366905 m (± 0.88 mm)
 DET78 = 0.369935 m (± 0.85 mm)

LOG: **FSMT-E**

Country: **Italy**

FSMT-E Run #11

Formation Subsidence Monitoring Tool

Log interval 3160 – 3065m