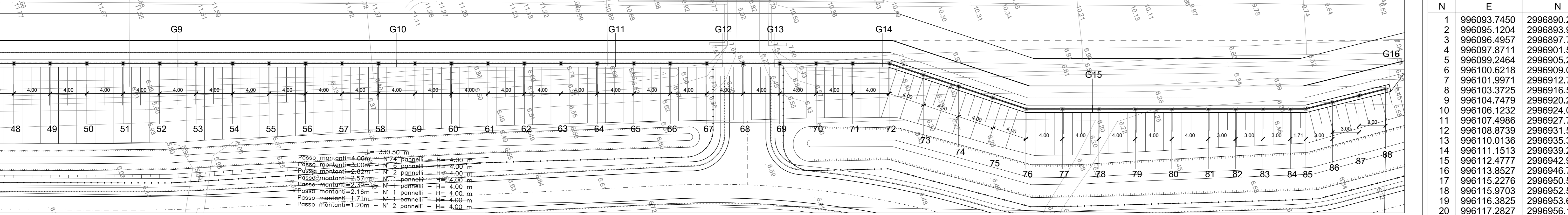
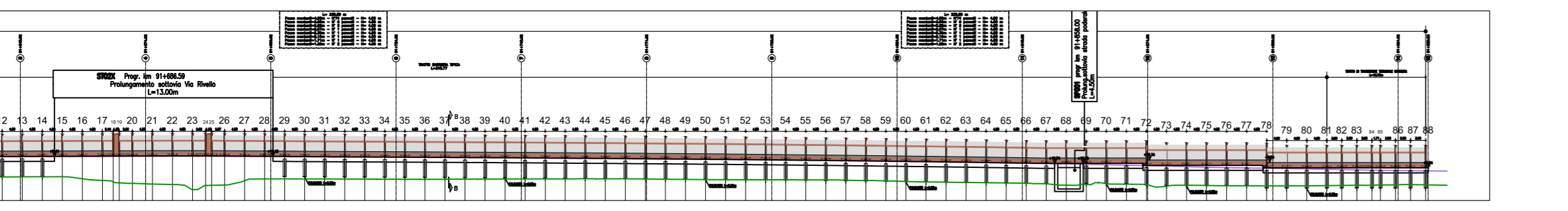


Table with 4 columns: No. PALI, DISTANZE PARZIALI, QUOTE TERRENO, QUOTE PROGETTO, QUOTE TESTA MURO. Rows correspond to stationing from 44 to 88.

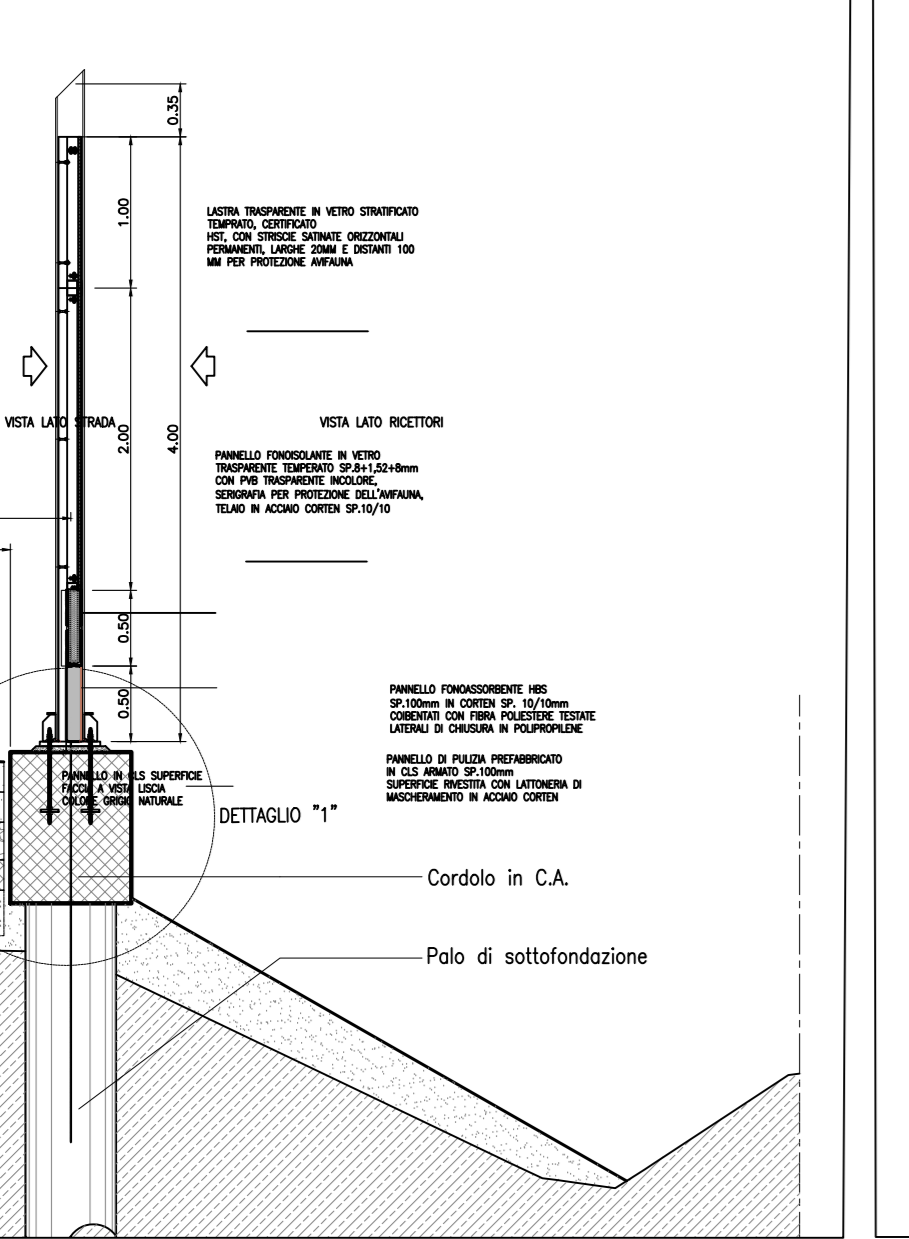
PLANIMETRIA DI PROGETTO A-A 1:200



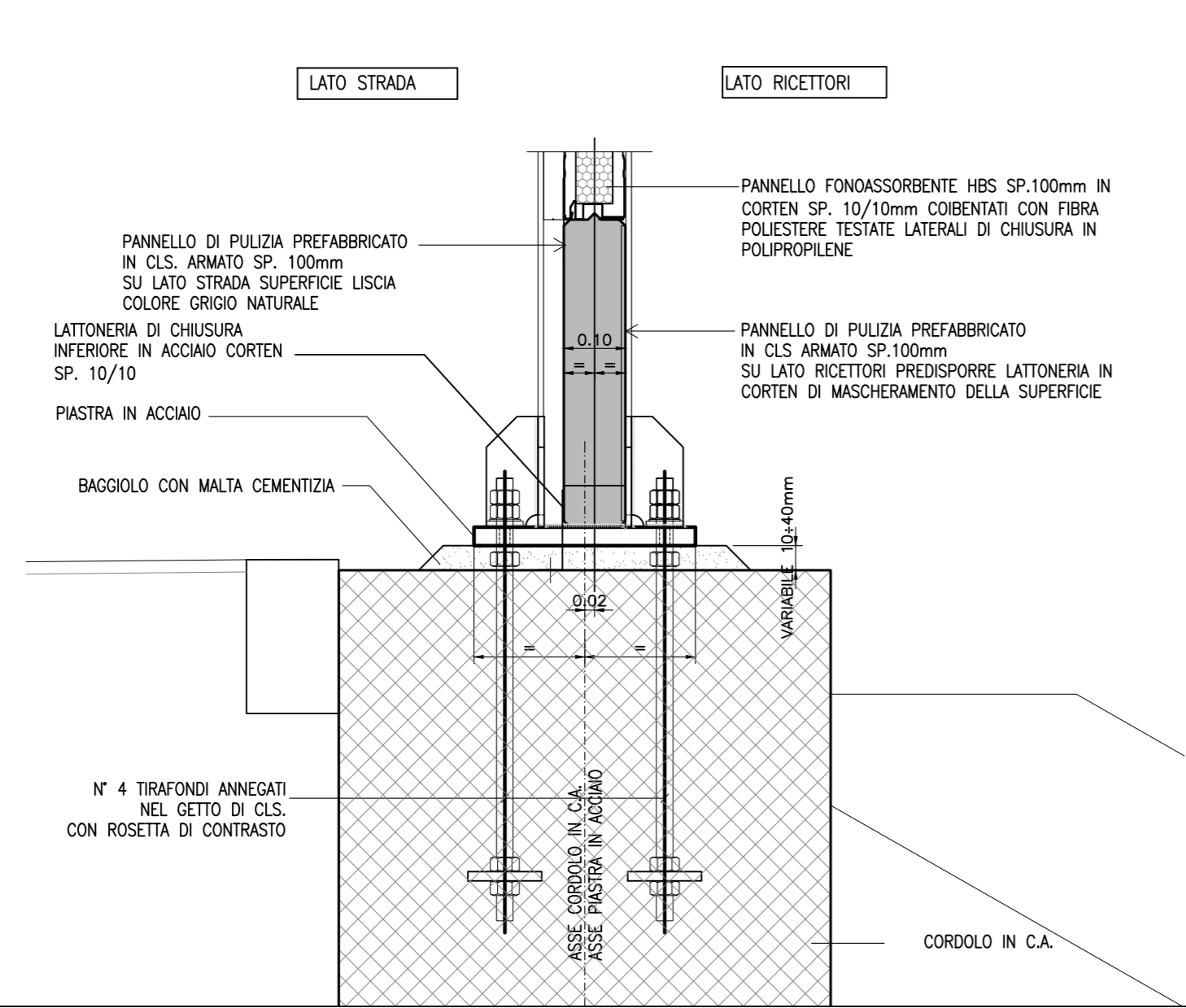
PROSPETTO D'ASSIEME 1:500



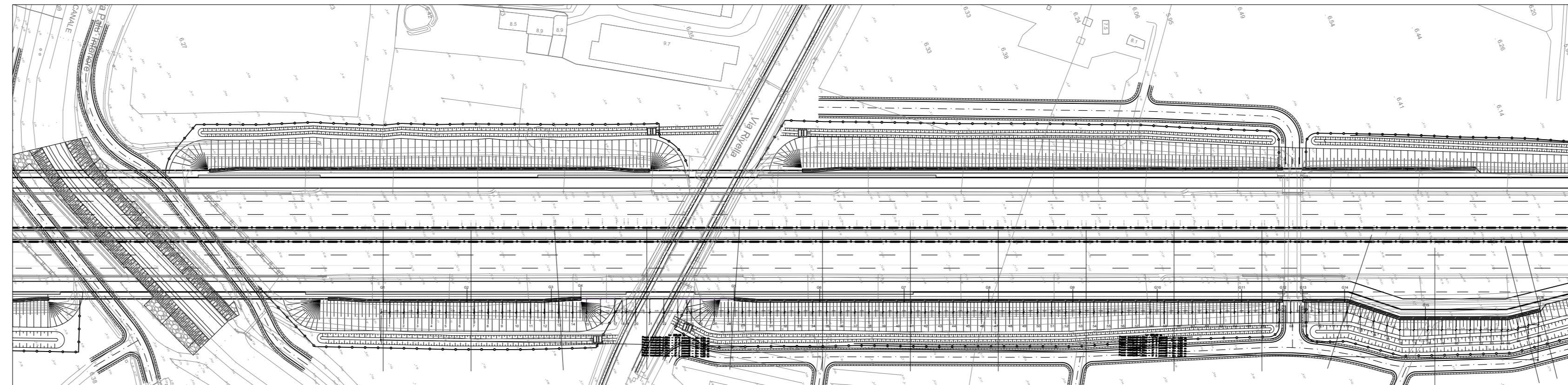
SEZIONE B-B 1:50



DETTAGLIO 1 - SEZIONE B-B Scala 1:10



PLANIMETRIA D'ASSIEME 1:1000



COORDINATE MONTANTI

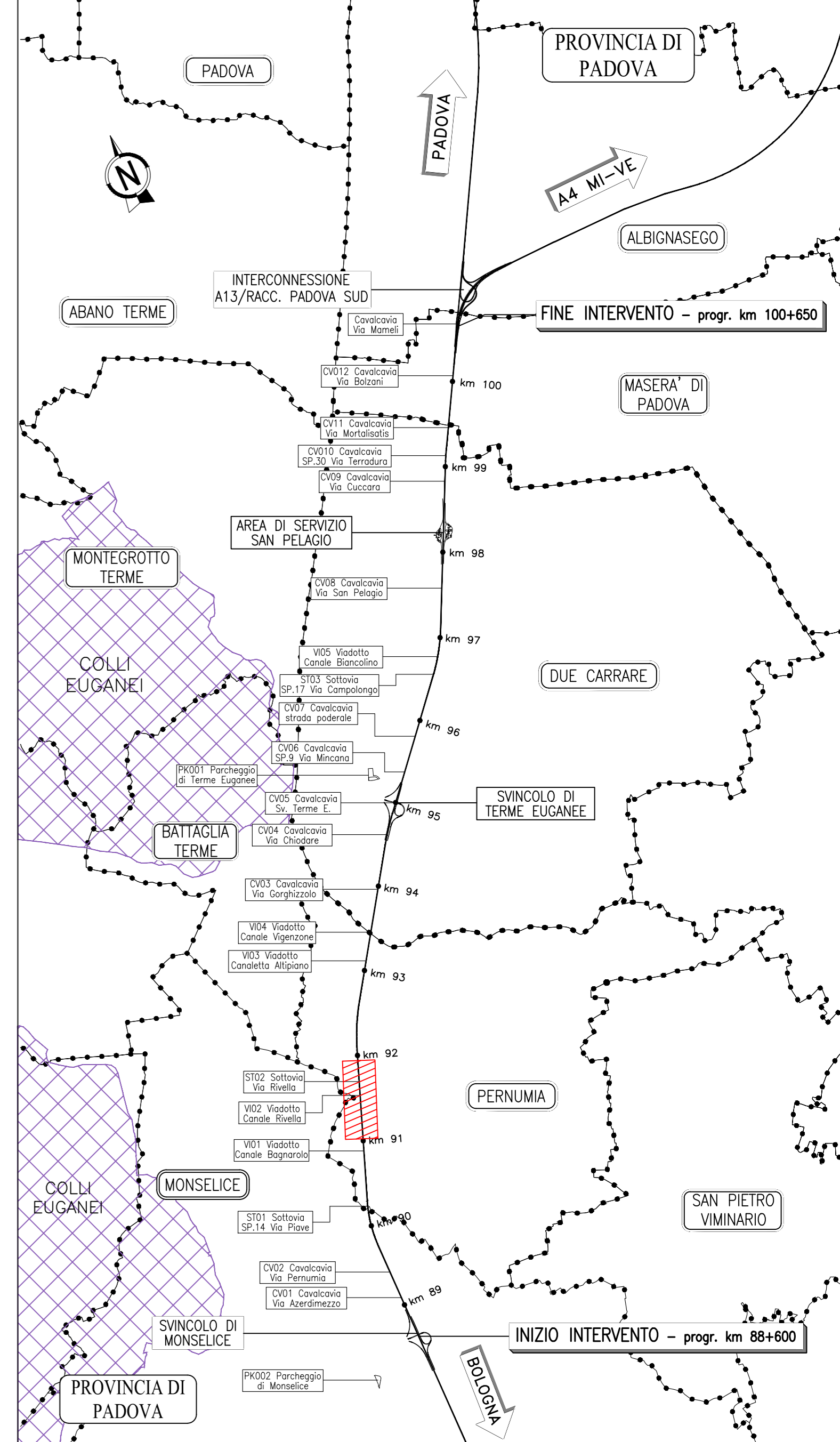
Table with 3 columns: N, E, N. Rows 1 to 33 providing coordinates for each barrier panel.

COORDINATE GIUNTO CODOLO

Table with 3 columns: G, E, N. Rows G1 to G16 providing coordinates for each joint.

ELABORATI DI RIFERIMENTO

Text listing reference documents and technical specifications used in the design.



NOTE GENERALI

- General notes detailing technical requirements, materials, and construction standards for the barrier.

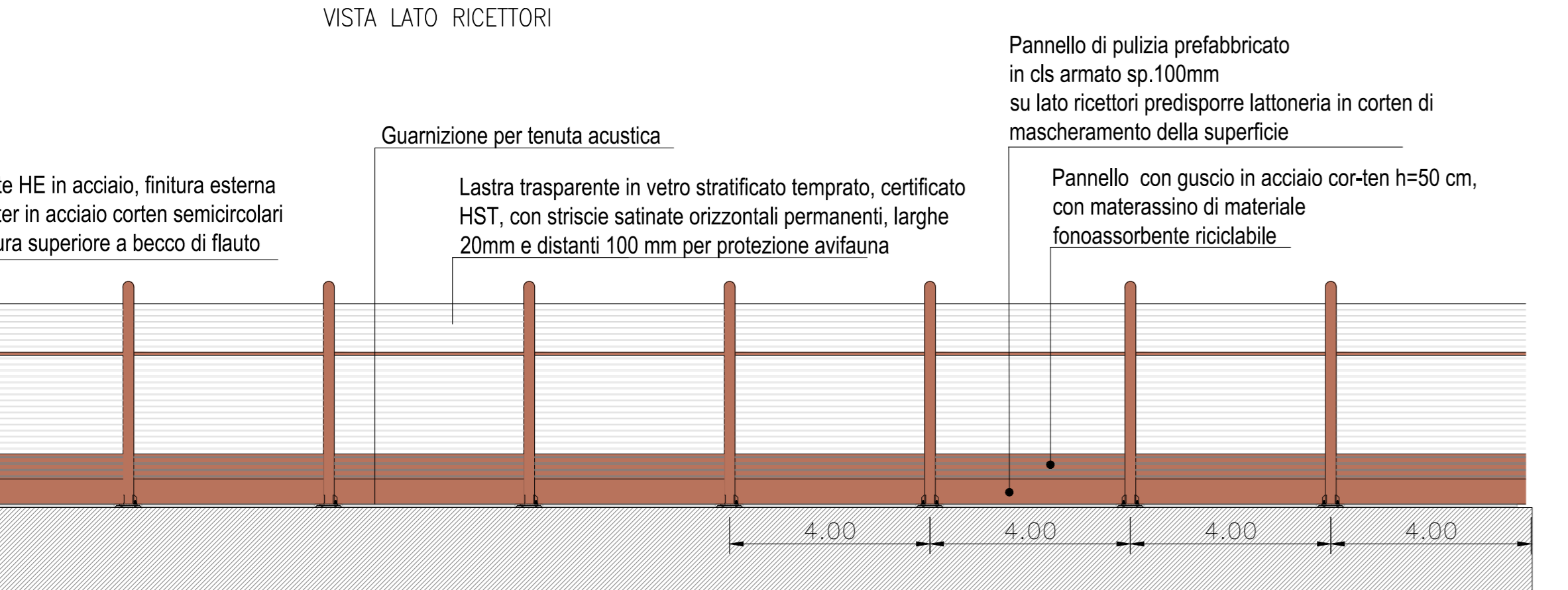
autostrade per l'italia logo and project name: AUTOSTRADA (A13): BOLOGNA-PADOVA

AMPLIAMENTO ALLA TERZA CORSIA TRATTO : MONSELICE - PADOVA SUD

PROGETTO ESECUTIVO

Table with project details: AUTOSTRADA A13 ASPETTI AMBIENTALI, Barracustica N L=330m H=4m pk91+600/91+929.

DETTAGLIO "A" - Barriera tipo 1B H4 - Trasparente 1:100



DETTAGLIO "A" - Barriera tipo 1B H4 - Trasparente 1:100

