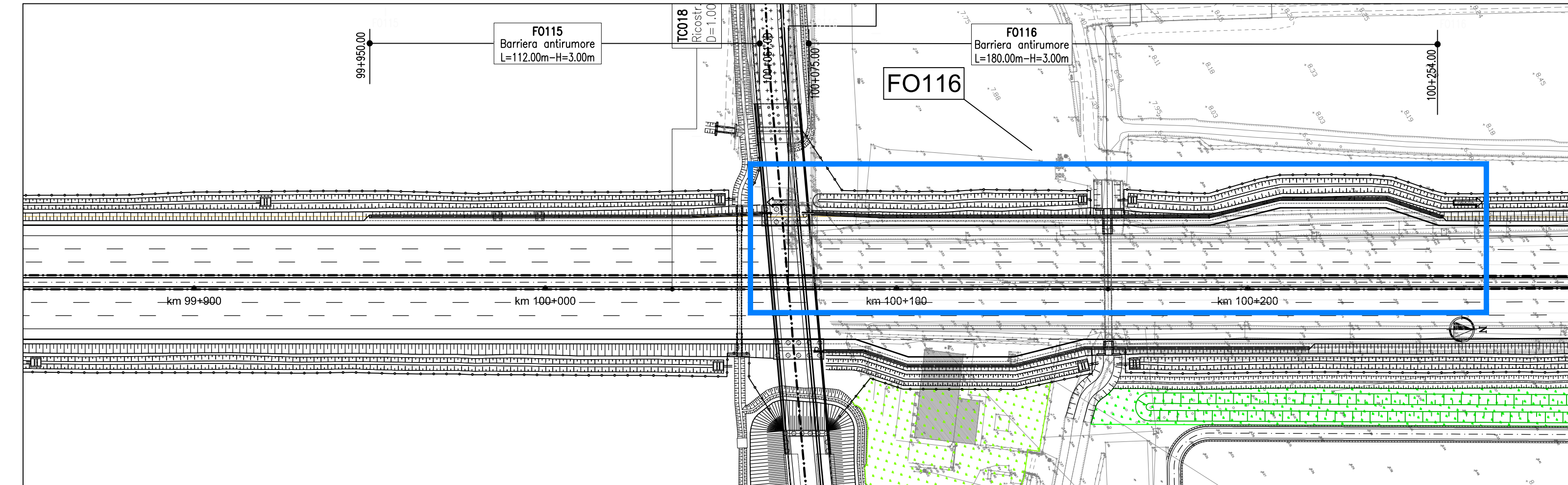
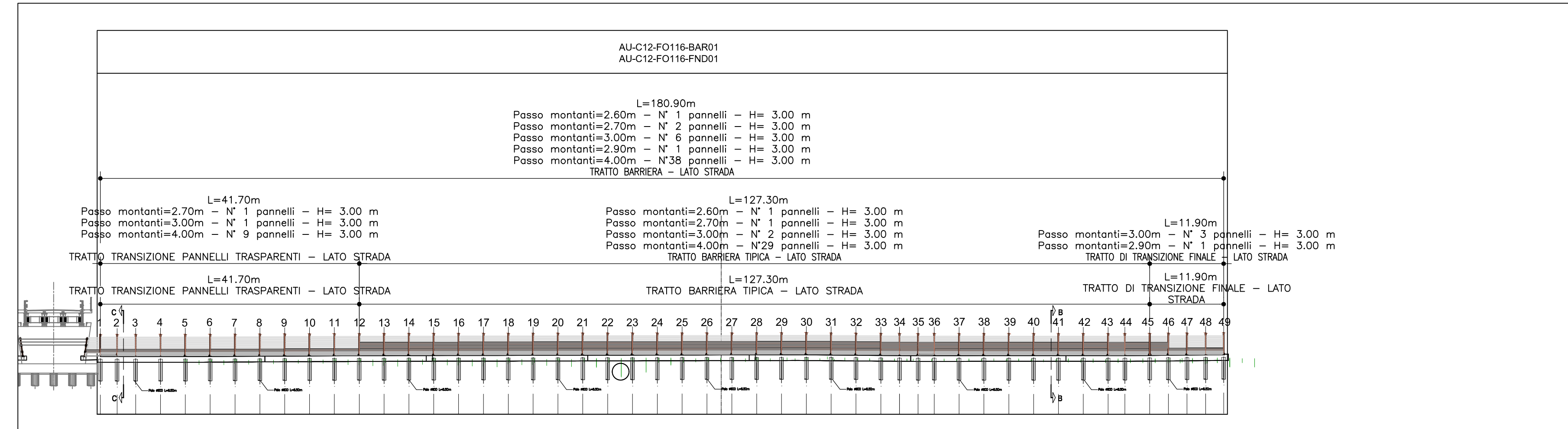


PLANIMETRIA D'ASSIEME 1:1000

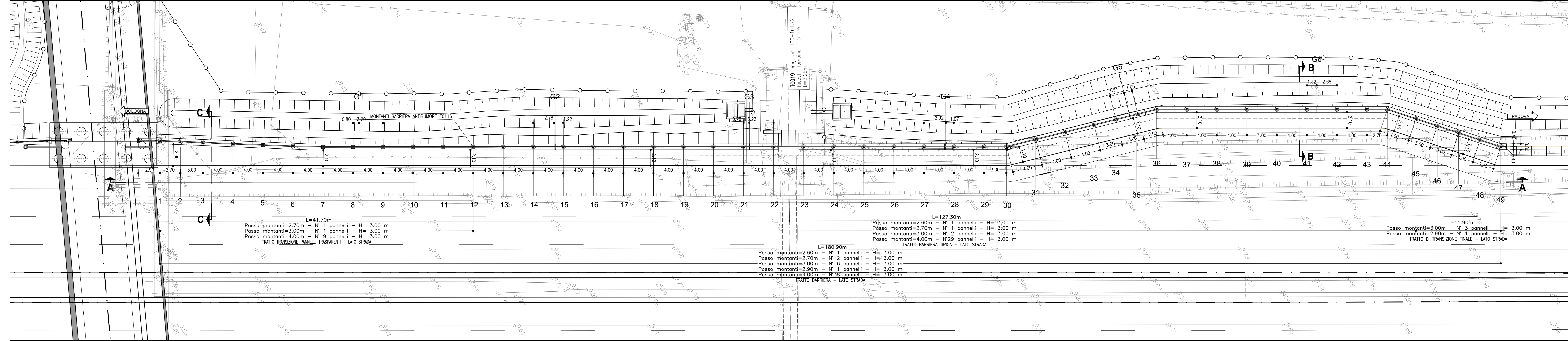


PROSPETTO D'ASSIEME 1:500

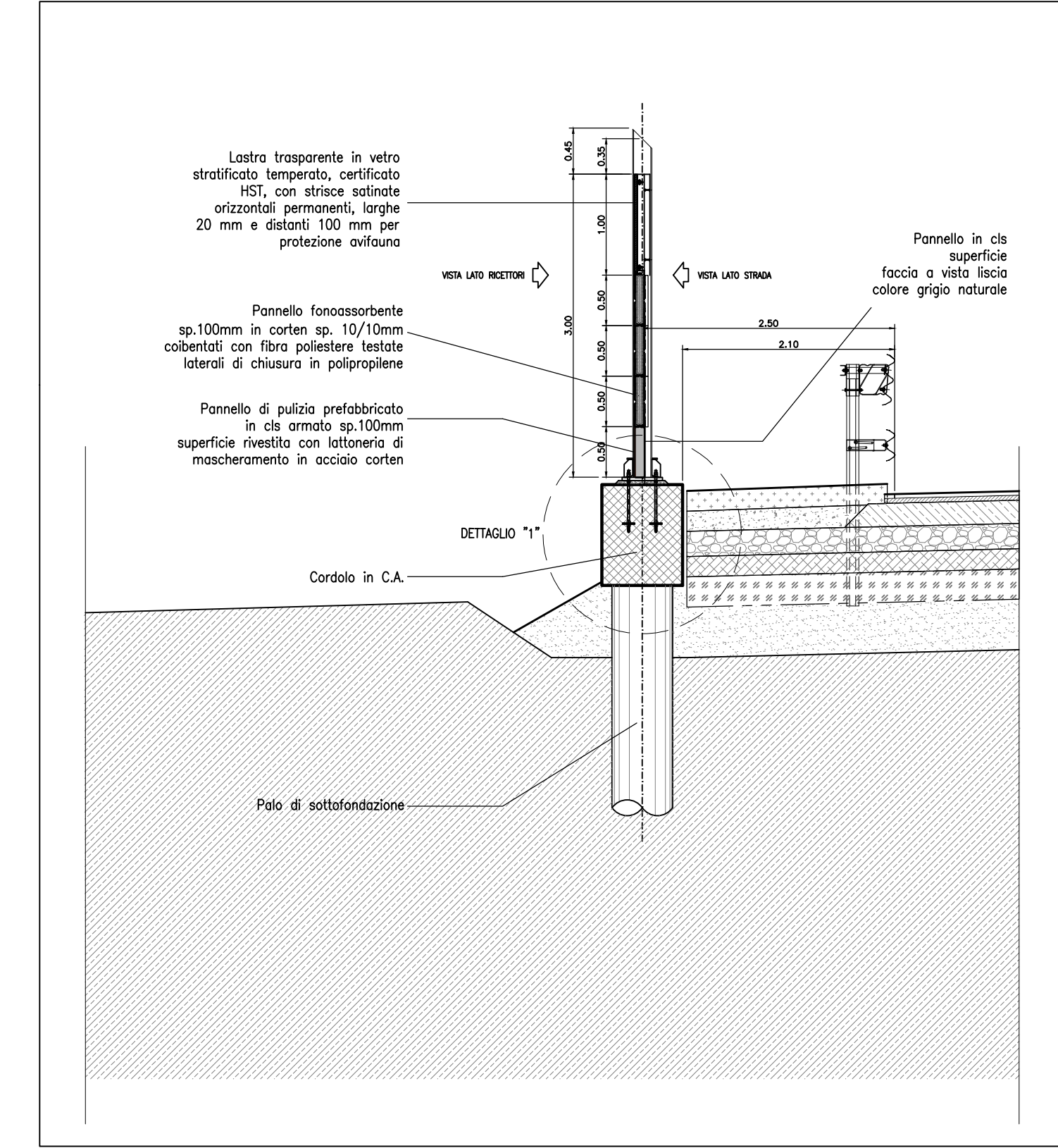


ELABORATI DI RIFERIMENTO
LA SPERANZA DI DURATA...
LA PRESSIONE MINIMA DEL PAVIMENTO...

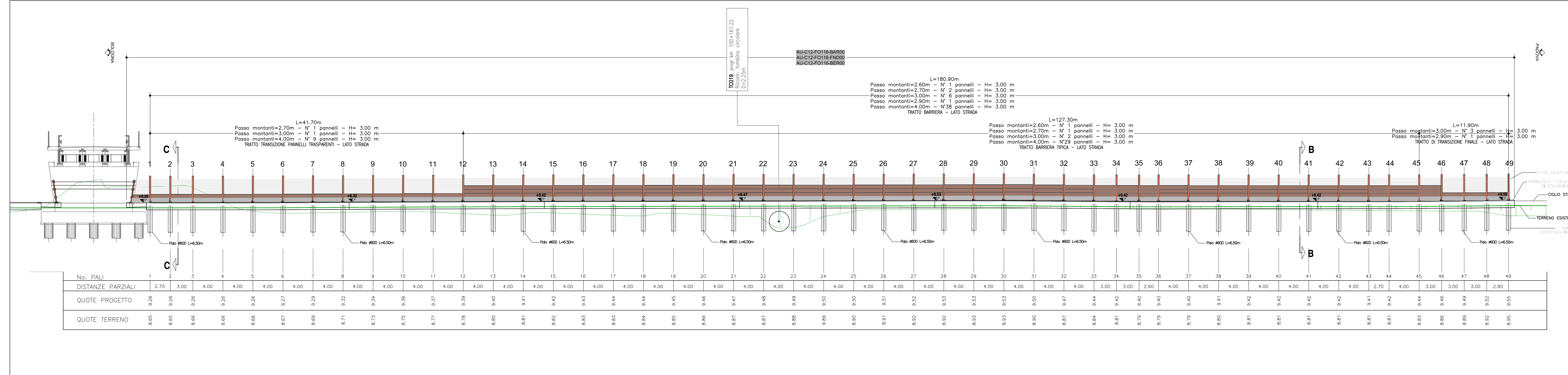
PLANIMETRIA DI PROGETTO 1:2000



SEZIONE TRASVERSALE 1:50



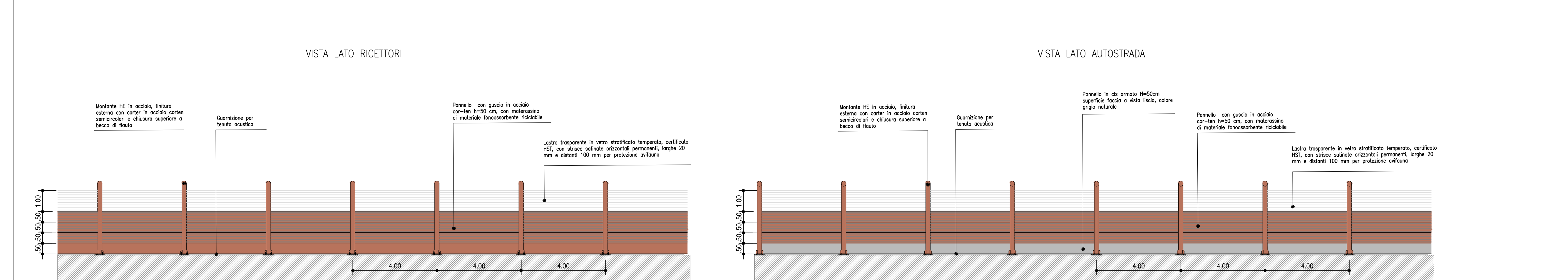
SEZIONE LONGITUDINALE A-A 1:200



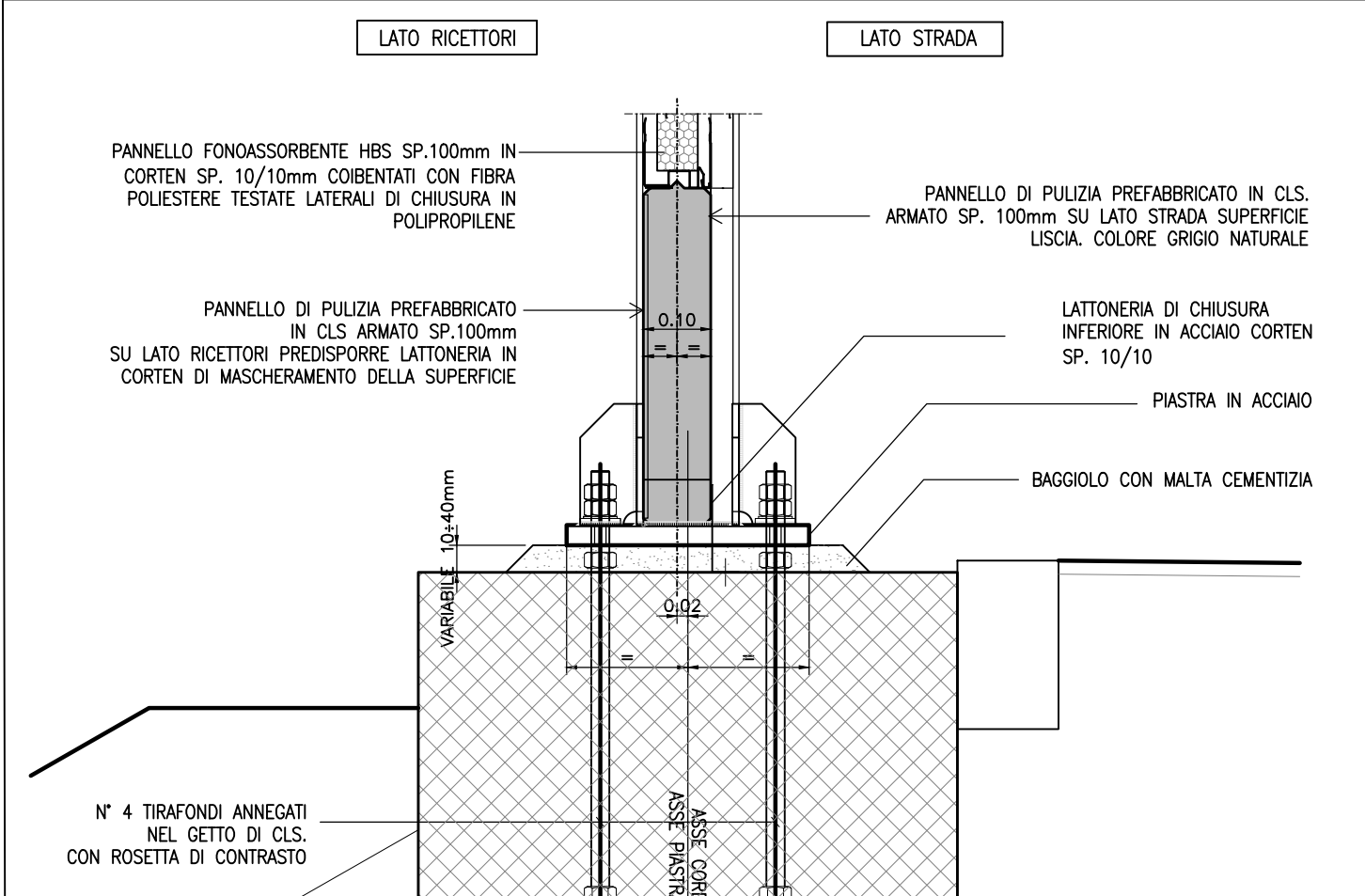
TRACCIAMENTO MONTANTI BARRIERA

Table with columns: PUNTO, COORDINATE (EST, NORD), and rows M-1 to M-49.

DETTAGLIO "A" - Barriera tipo 1A H3 - Opaca 1:100



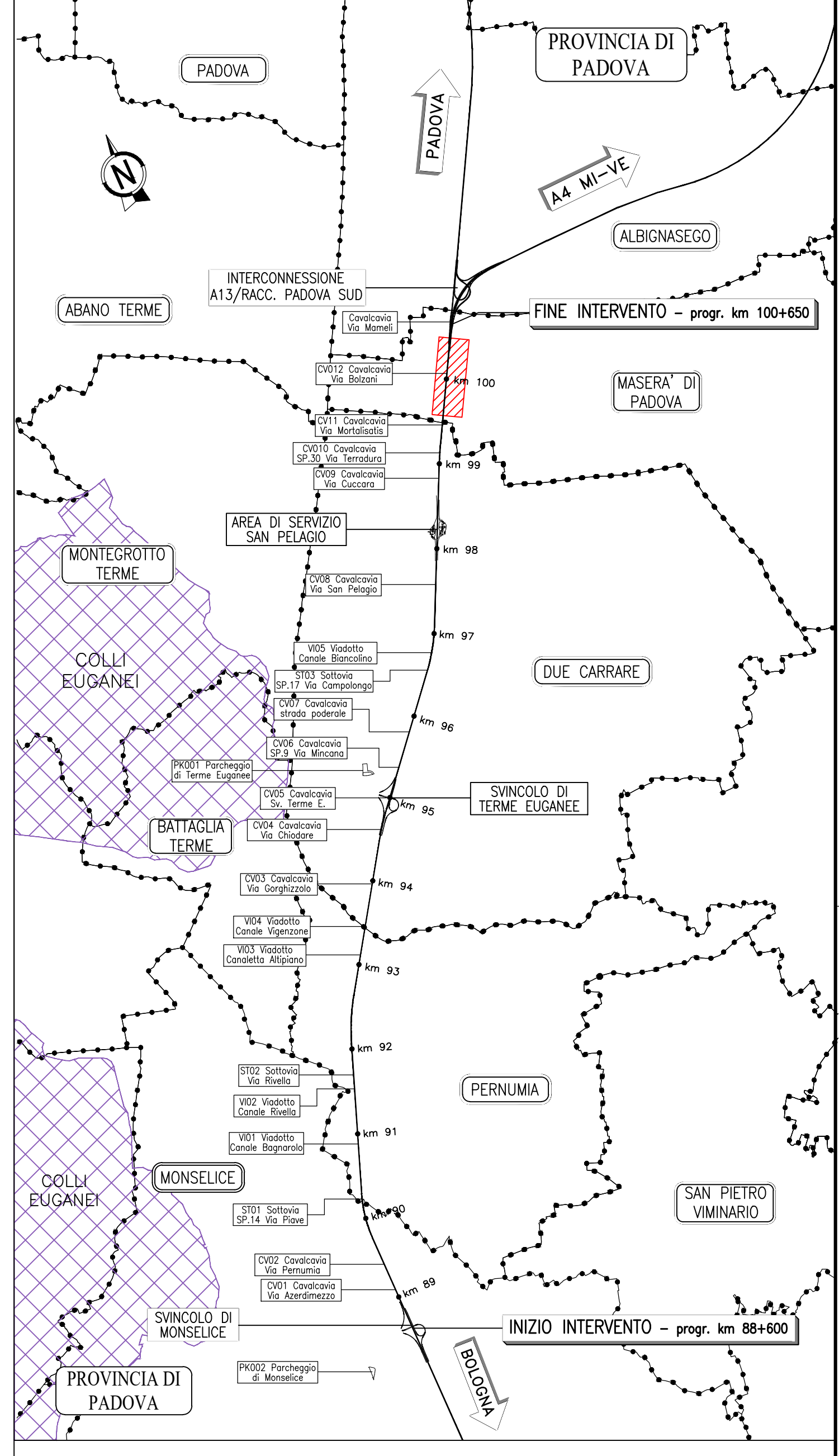
DETTAGLIO 1:10



TRACCIAMENTO GIUNTI CORDOLO

Table with columns: PUNTO, COORDINATE (EST, NORD), and rows C-1 to C-6.

QUADRO DI UNIONE



NOTE GENERALI

- Tutte le dimensioni sono espresse in metri.
Tutte le quote altimetriche e le coordinate sono espresse in metri.
Le distanze parziali e le coordinate sono espresse in metri.
La dimensione in altezza del pannello metallico forgiato...



AUTOSTRADA (A13) : BOLOGNA-PADOVA

AMPLIAMENTO ALLA TERZA CORSA
TRATTO : MONSELICE - PADOVA SUD

PROGETTO ESECUTIVO

Project information box including title 'AU - CORPO AUTOSTRADALE', environmental aspects, and technical specifications for the acoustic barrier.

Administrative and technical data table with columns for project details, revision history, and approval signatures.

Footer area with logos for TECNE, autostrade per l'Italia, and other project partners.