

**CERIGNOLA**

**REGIONE PUGLIA**

**PROVINCIA DI  
FOGGIA**

**IMPIANTO AGRIVOLTAICO E RELATIVE OPERE ED INFRASTRUTTURE  
CONNESSE DELLA POTENZA ELETTRICA DI 111,62 MW (ex 114,64 MW) SITO  
NEL COMUNE DI CERIGNOLA**

**PROGETTO DEFINITIVO**

## PLANIMETRIA DEL PIANO PARTICELLARE D'ESPROPRIO

Proponente:

**CERIGNOLA SOLAR I s.r.l.**

Via Antonio Locatelli n.1  
37122 Verona  
P.IVA 04888330232  
www.enitspa.it  
cerignolasolar1srl@legalmail.it

Progettazione:

**WH Group s.r.l.**

Via A. Locatelli n.1 - 37122 Verona (VR) -  
P.IVA 12336131003  
ingegneria@enitgroup.eu

Ing. Antonio Tartaglia



Spazio riservato agli Enti:

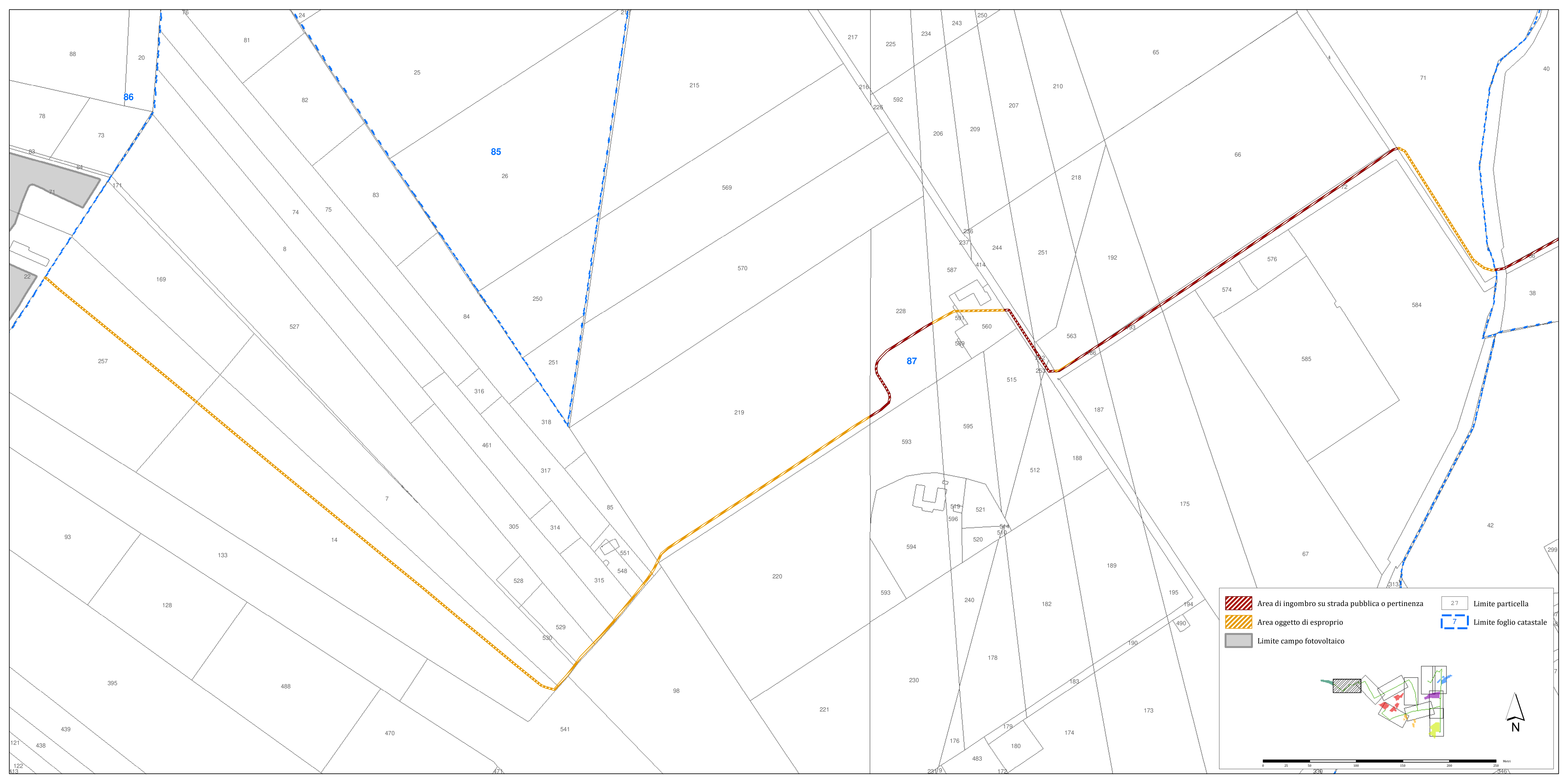
File:VZYY142\_4.2.13\_1.1-PlanimetriaPianoEsproprio-Rev2.pdf






Cod:VZYY142

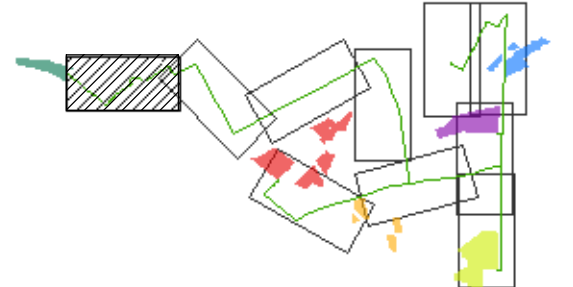
Scala: 1:2'000


**4.2.13\_1.1**


Rev.	Data	Descrizione	Redatto	Approvato
00	21/02/2020	Prima emissione		
01	09/06/2020	Richiesta integrazioni		
02	01/02/2021	Variante migliorativa	A. Tartaglia	S. M. Caputo



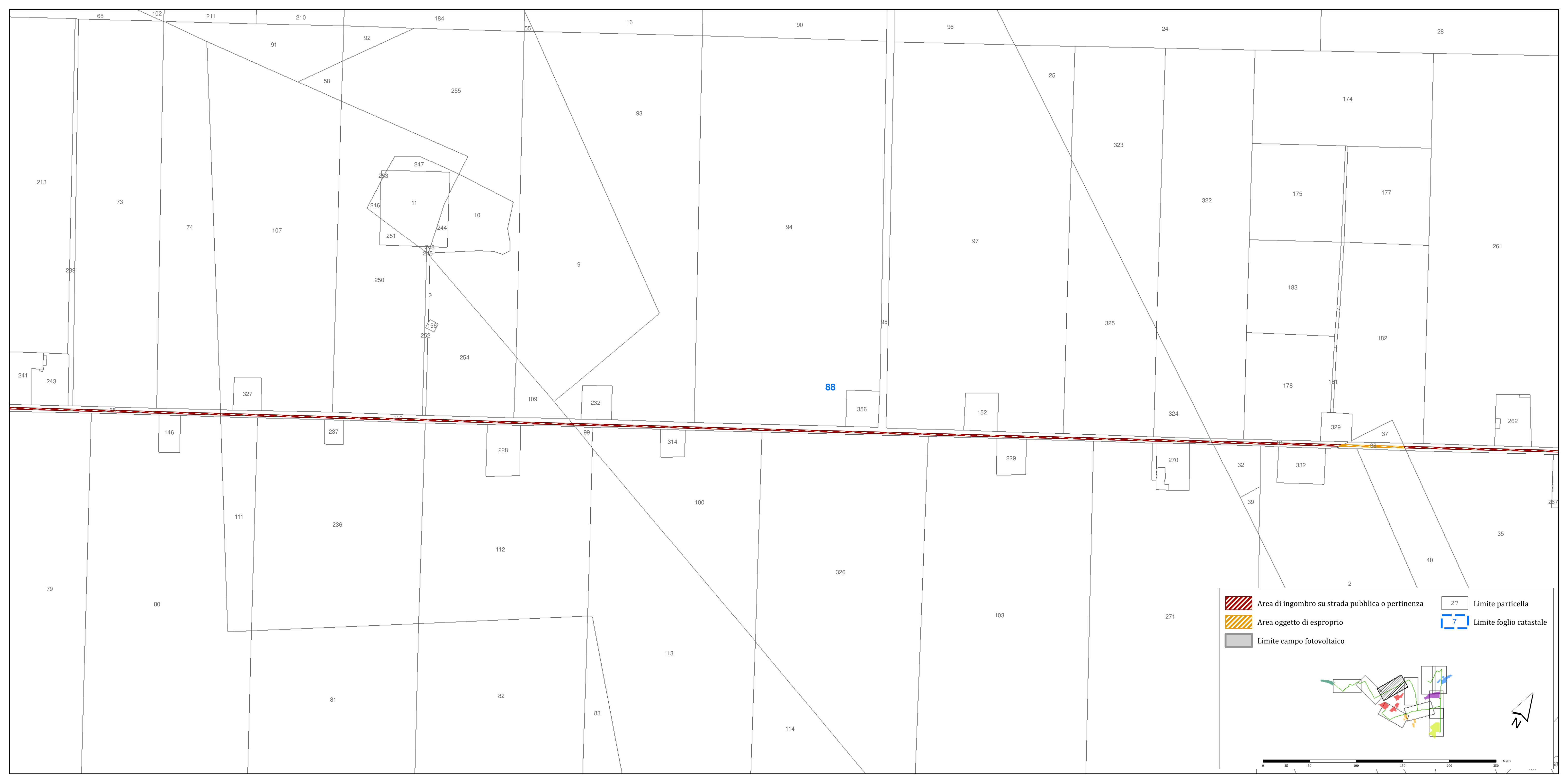
	Area di ingombro su strada pubblica o pertinenza		Limite particella
	Area oggetto di esproprio		Limite foglio catastale
	Limite campo fotovoltaico		



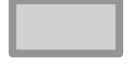




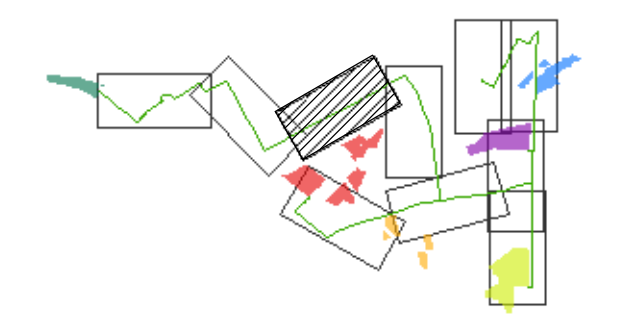






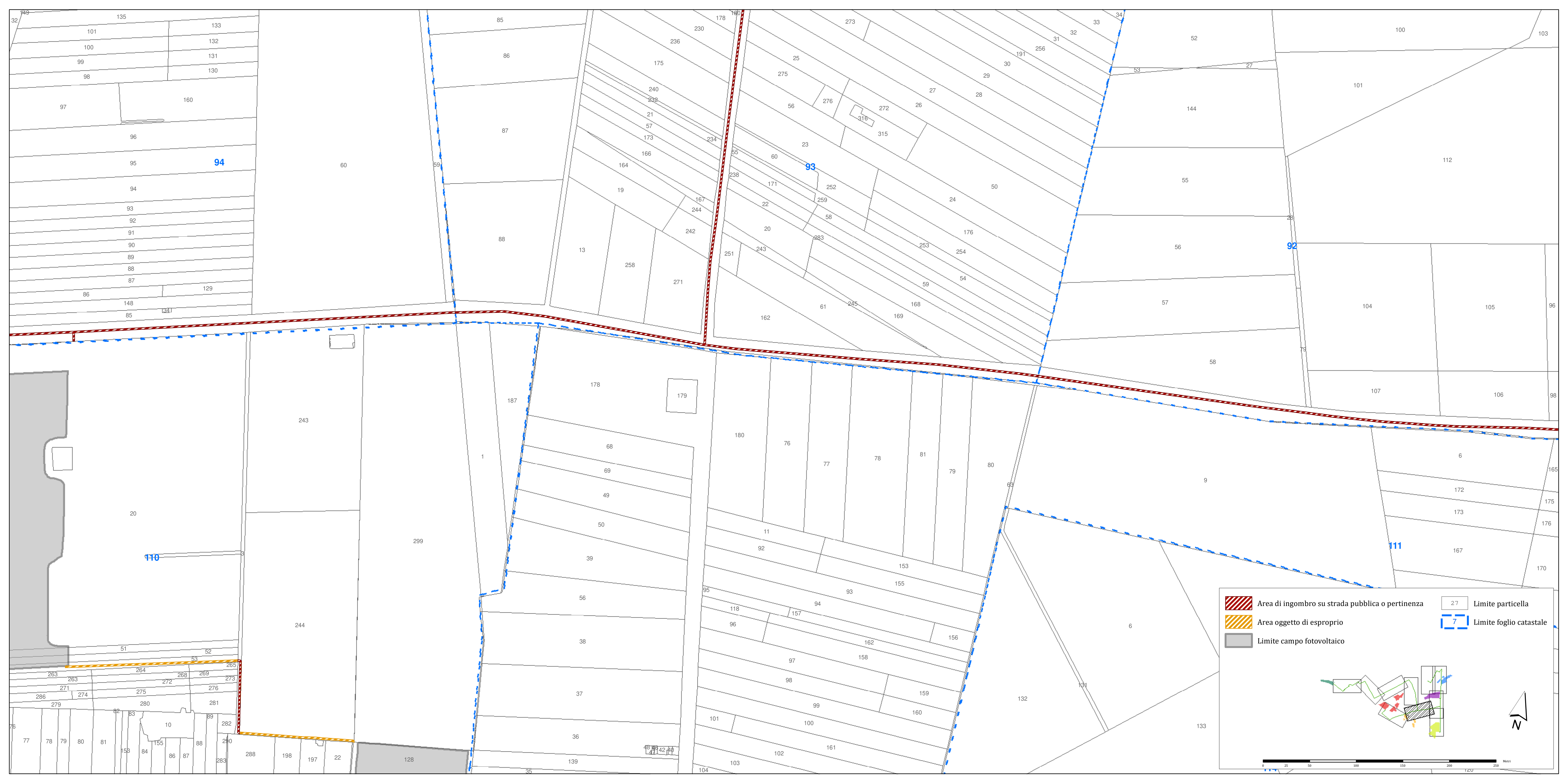


-  Area di ingombro su strada pubblica o pertinenza
-  Area oggetto di esproprio
-  Limite campo fotovoltaico
-  Limite particella
-  Limite foglio catastale









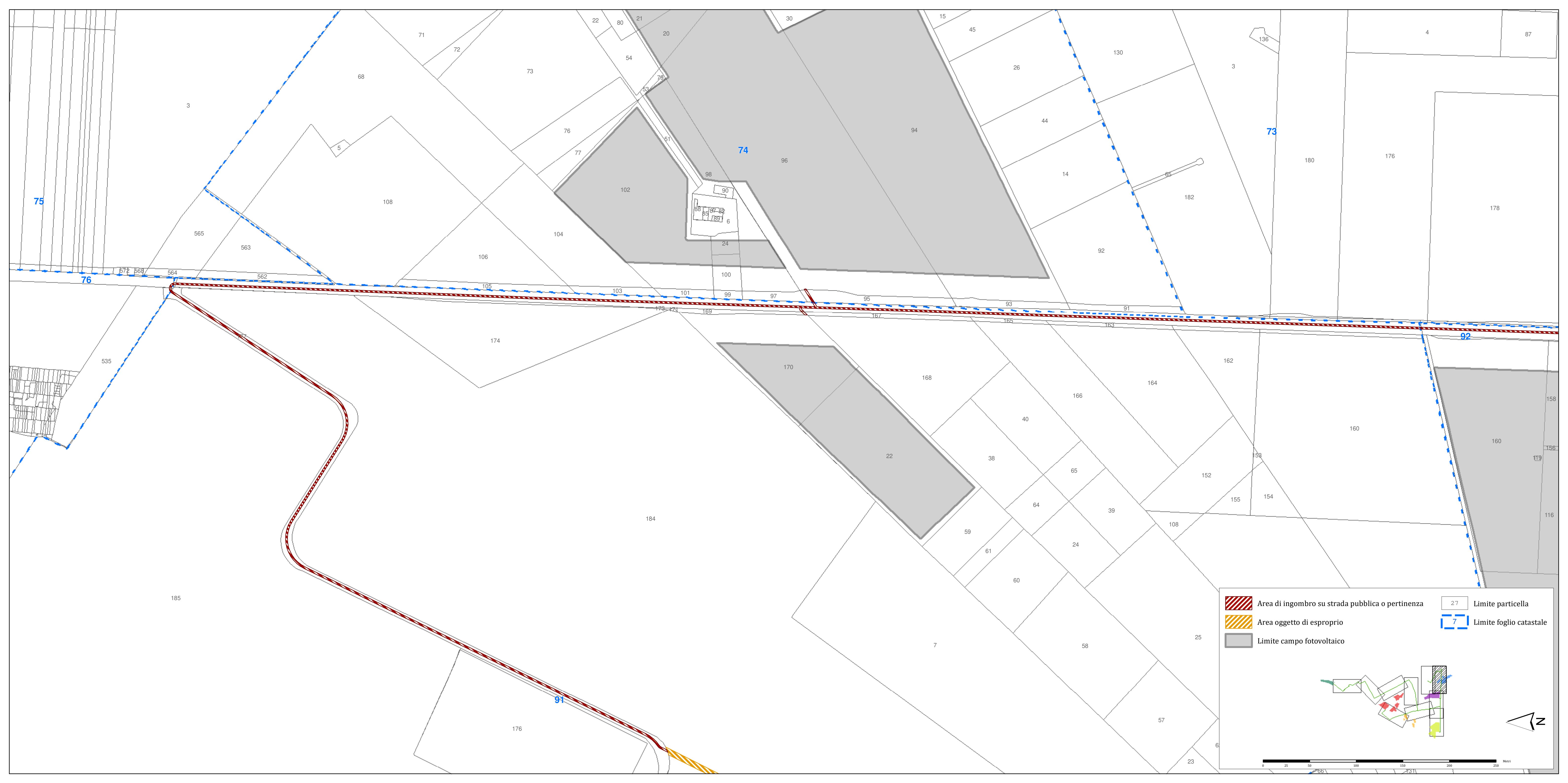
**Legend:**



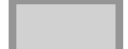


- Area di ingombro su strada pubblica o pertinenza
- Area oggetto di esproprio
- Limite campo fotovoltaico
- 27 Limite particella
- 7 Limite foglio catastale

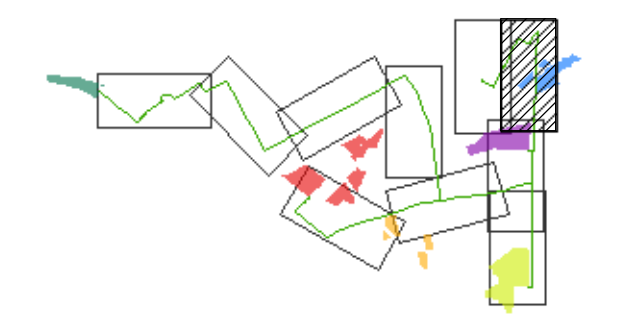
**Scale:** 0 25 50 100 150 200 250 Metri

**Orientation:** North arrow pointing up.

**Inset Map:** A small map in the bottom right corner shows the location of the main map area within a larger geographical context, with a red rectangle highlighting the specific area shown in the main map.








-  Area di ingombro su strada pubblica o pertinenza
-  Area oggetto di esproprio
-  Limite campo fotovoltaico
-  Limite particella
-  Limite foglio catastale









-  Area di ingombro su strada pubblica o pertinenza
-  Area oggetto di esproprio
-  Limite campo fotovoltaico
-  Limite particella
-  Limite foglio catastale

