

CERIGNOLA

REGIONE PUGLIA

PROVINCIA DI  
FOGGIA

IMPIANTO AGRIVOLTAICO E RELATIVE OPERE ED INFRASTRUTTURE  
CONNESSE DELLA POTENZA ELETTRICA DI 111,62 MW (ex 114,64 MW) SITO  
NEL COMUNE DI CERIGNOLA

PROGETTO DEFINITIVO

## INQUADRAMENTO TERRITORIALE DEL CAVIDOTTO DIVETTORIAMENTO SU CARTOGRAFIA CATASTALE

Proponente:

**CERIGNOLA SOLAR I s.r.l.**

Via Antonio Locatelli n.1  
37122 Verona  
P.IVA 04888330232  
www.enitspa.it  
cerignolasolar1srl@legalmail.it

Progettazione:

**WH Group s.r.l.**

Via A. Locatelli n.1 - 37122 Verona (VR) -  
P.IVA 12336131003  
ingegneria@enitgroup.eu

Ing. Antonio Tartaglia



Spazio riservato agli Enti:

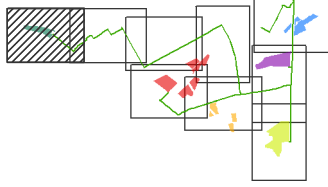
File:VZYY142\_ElaboratoCartografico\_4.1\_6.4-Rev2.pdf

Cod:VZYY142

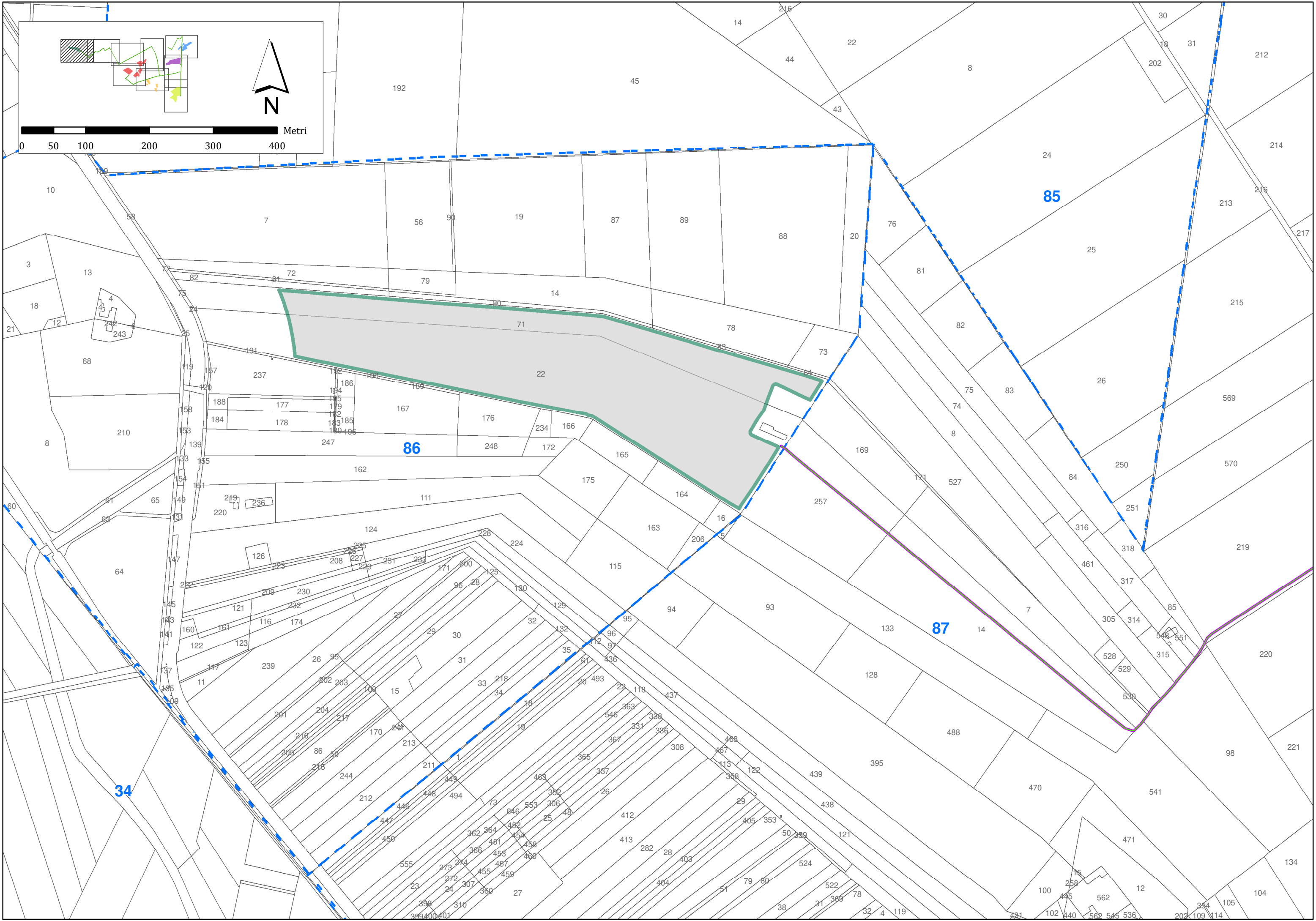
Scala: 1:5'000

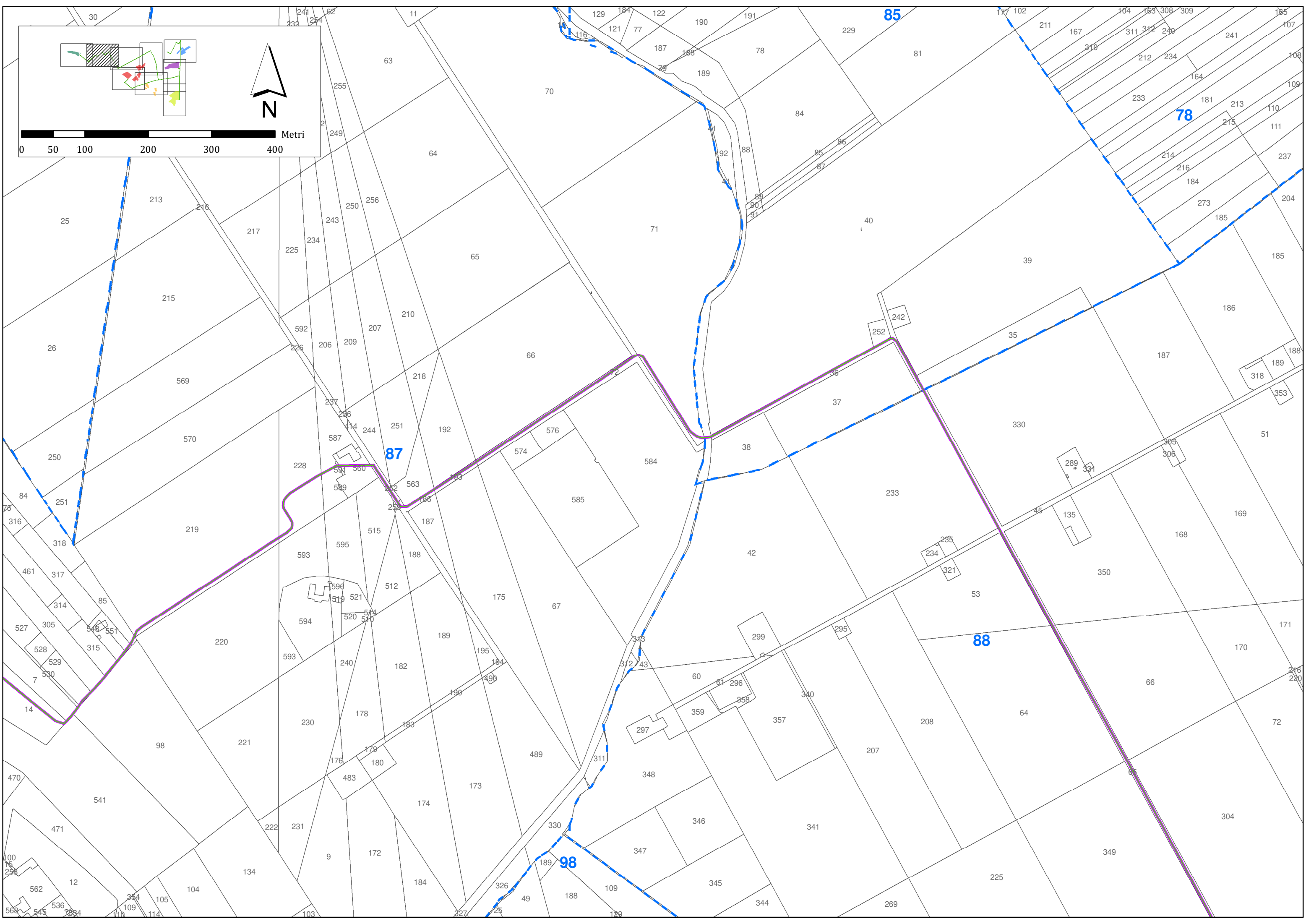
**4.1\_6.4**

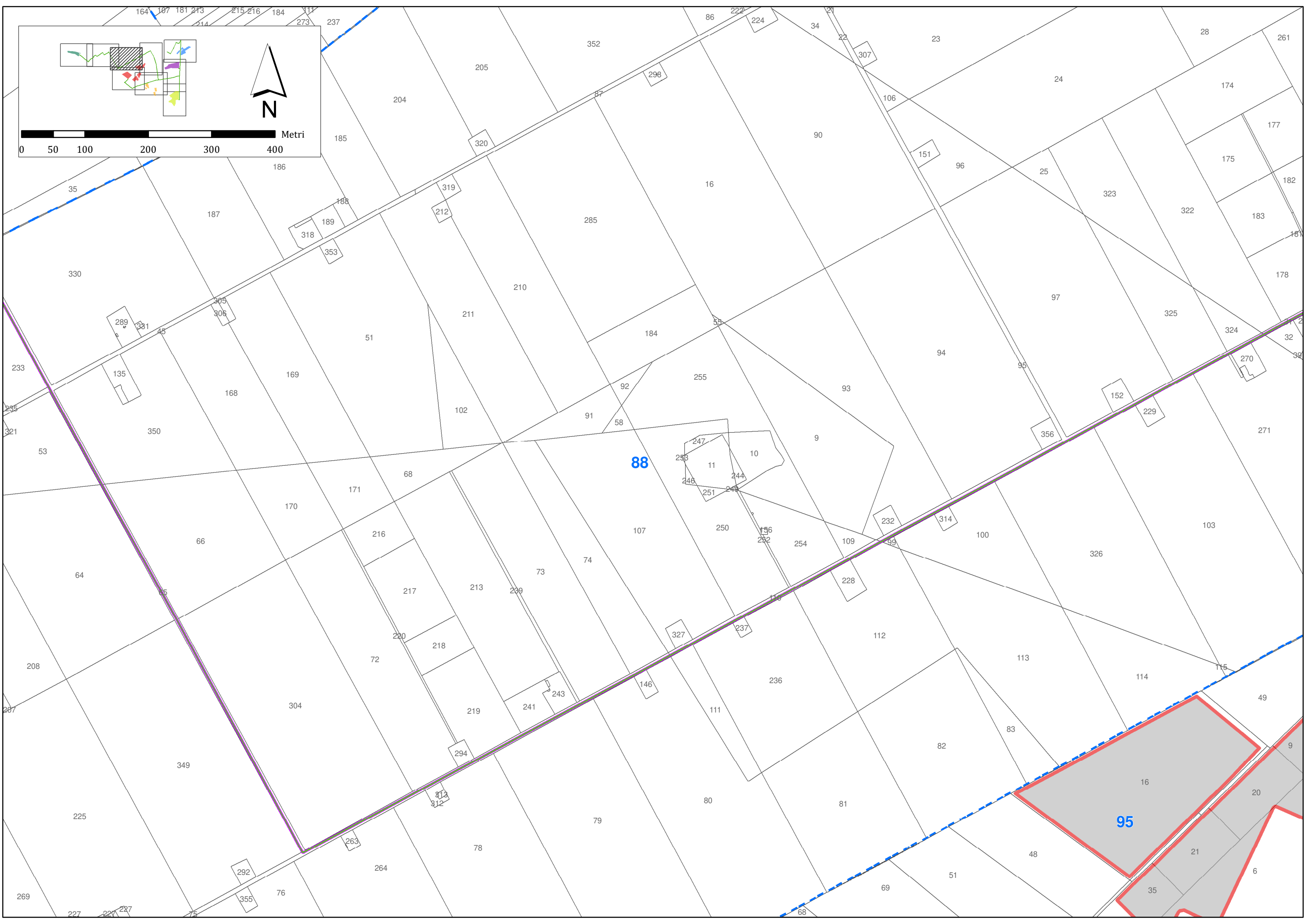
Rev.	Data	Descrizione	Redatto	Approvato
00	21/02/2020	Prima emissione		
01	09/06/2020	Richiesta integrazioni		
02	01/02/2021	Variante migliorativa	A. Tartaglia	S. M. Caputo



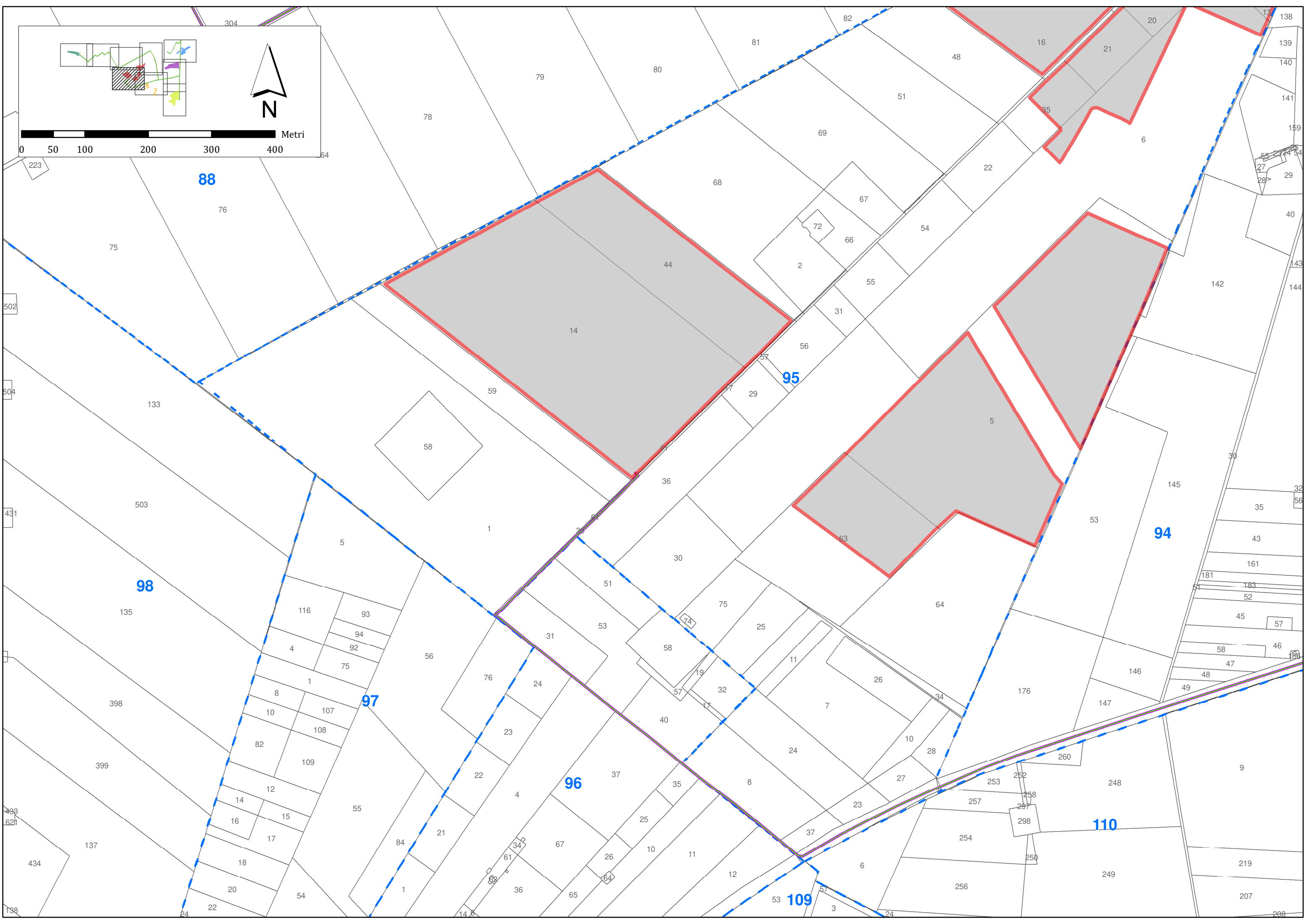
0 50 100 200 300 400 Metri

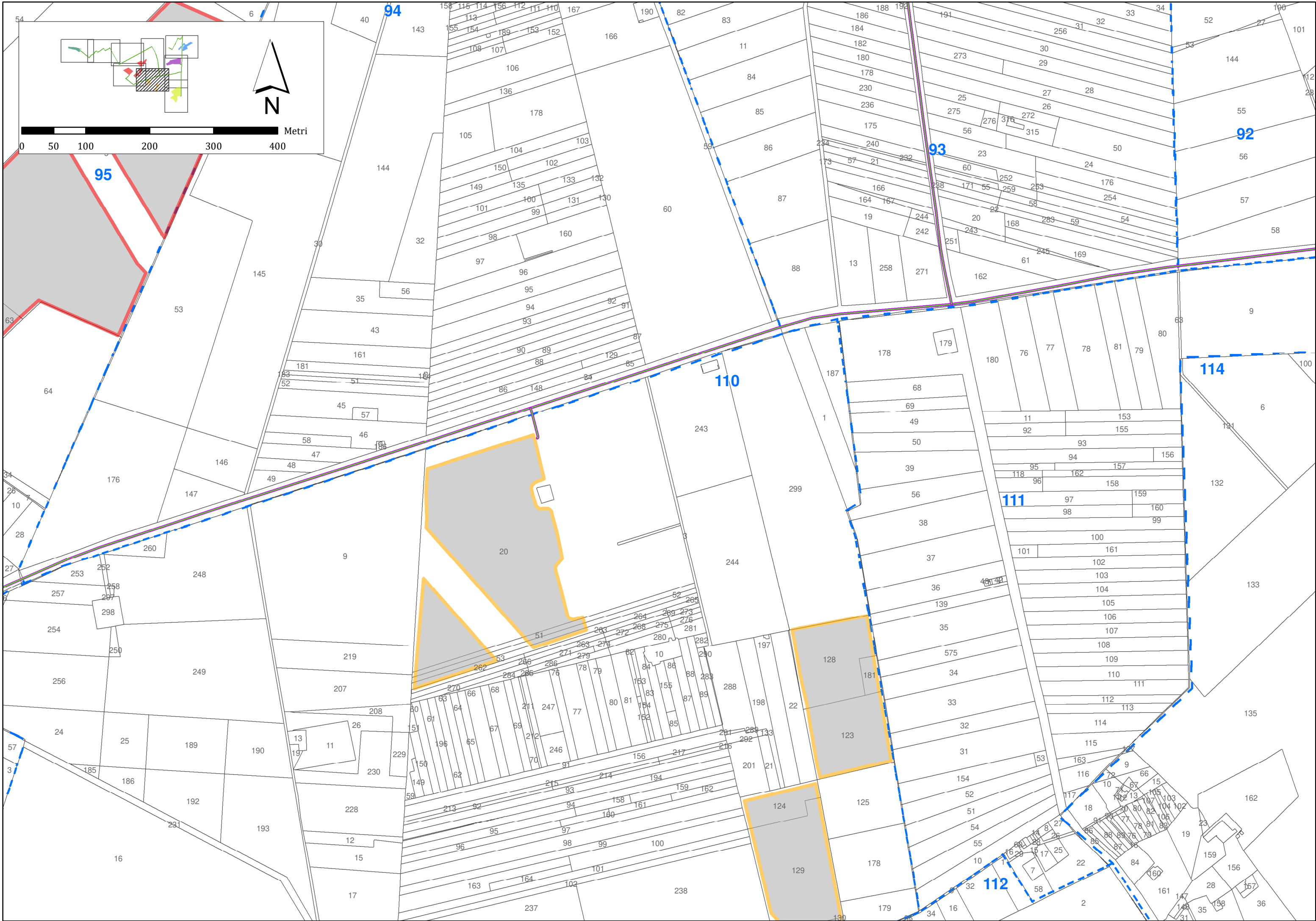






An inset map in the top-left corner shows a larger geographical context with a hatched area indicating the current map's location. Below the inset map is a scale bar labeled "Metri" with markings at 0, 50, 100, 200, 300, and 400. A north arrow is positioned to the right of the scale bar.





0 50 100 200 300 400 Metri



95

94

92

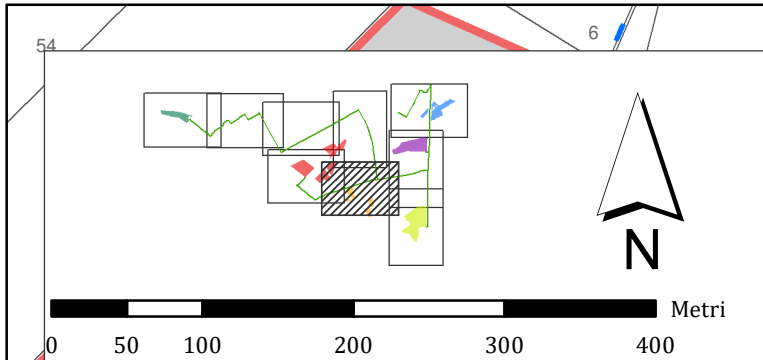
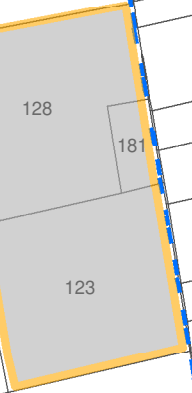
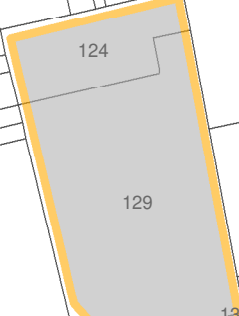
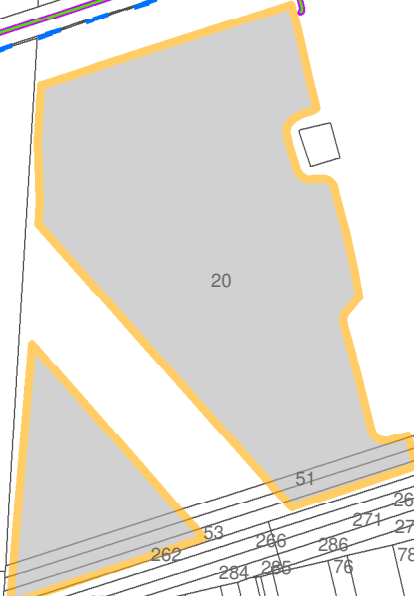
93

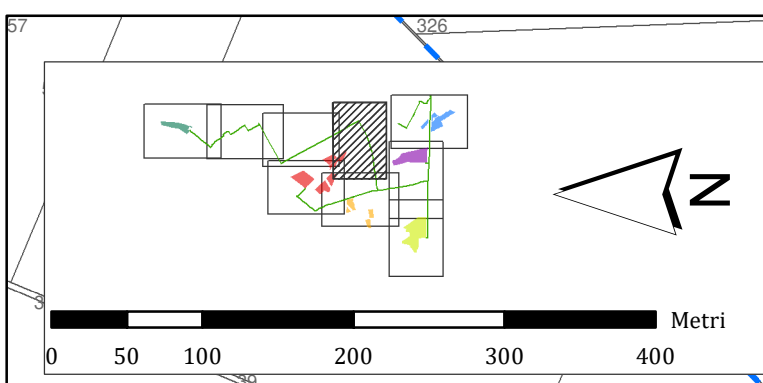
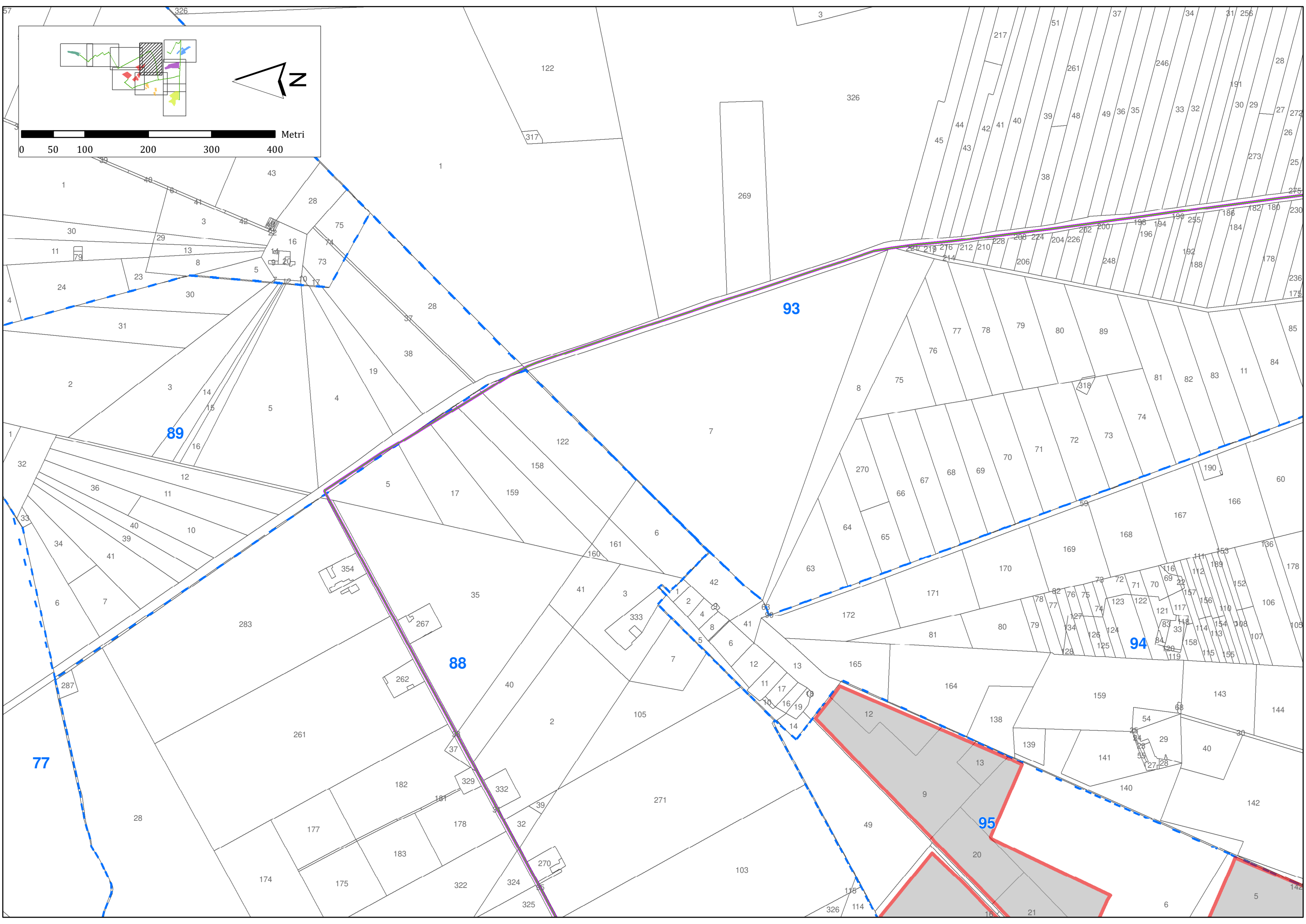
110

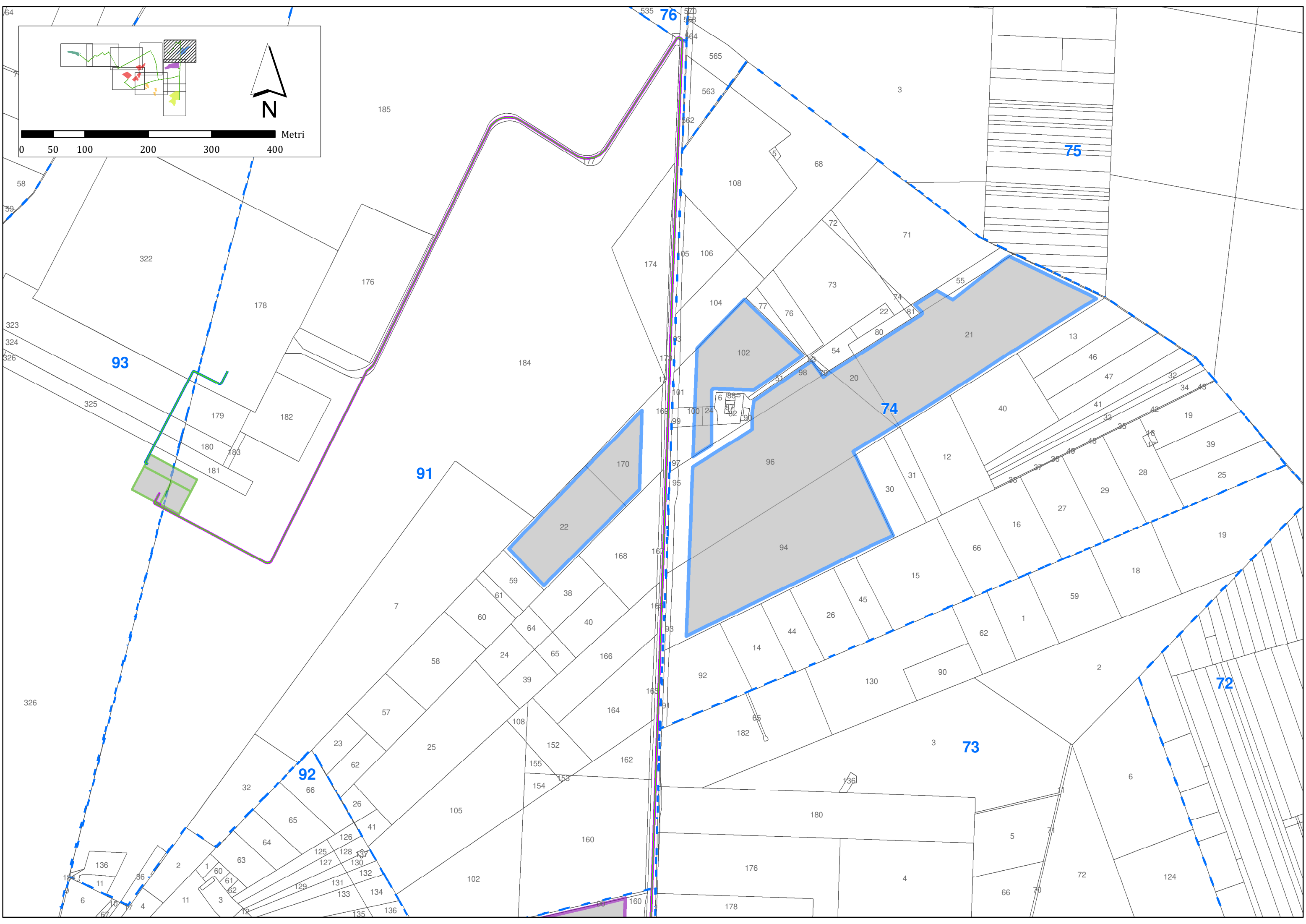
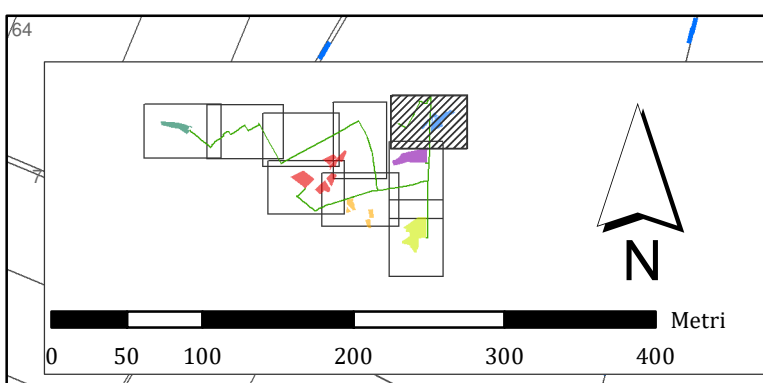
114

111

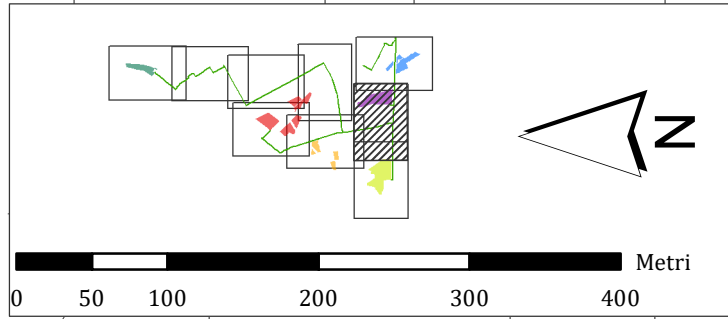
112











73

115

118

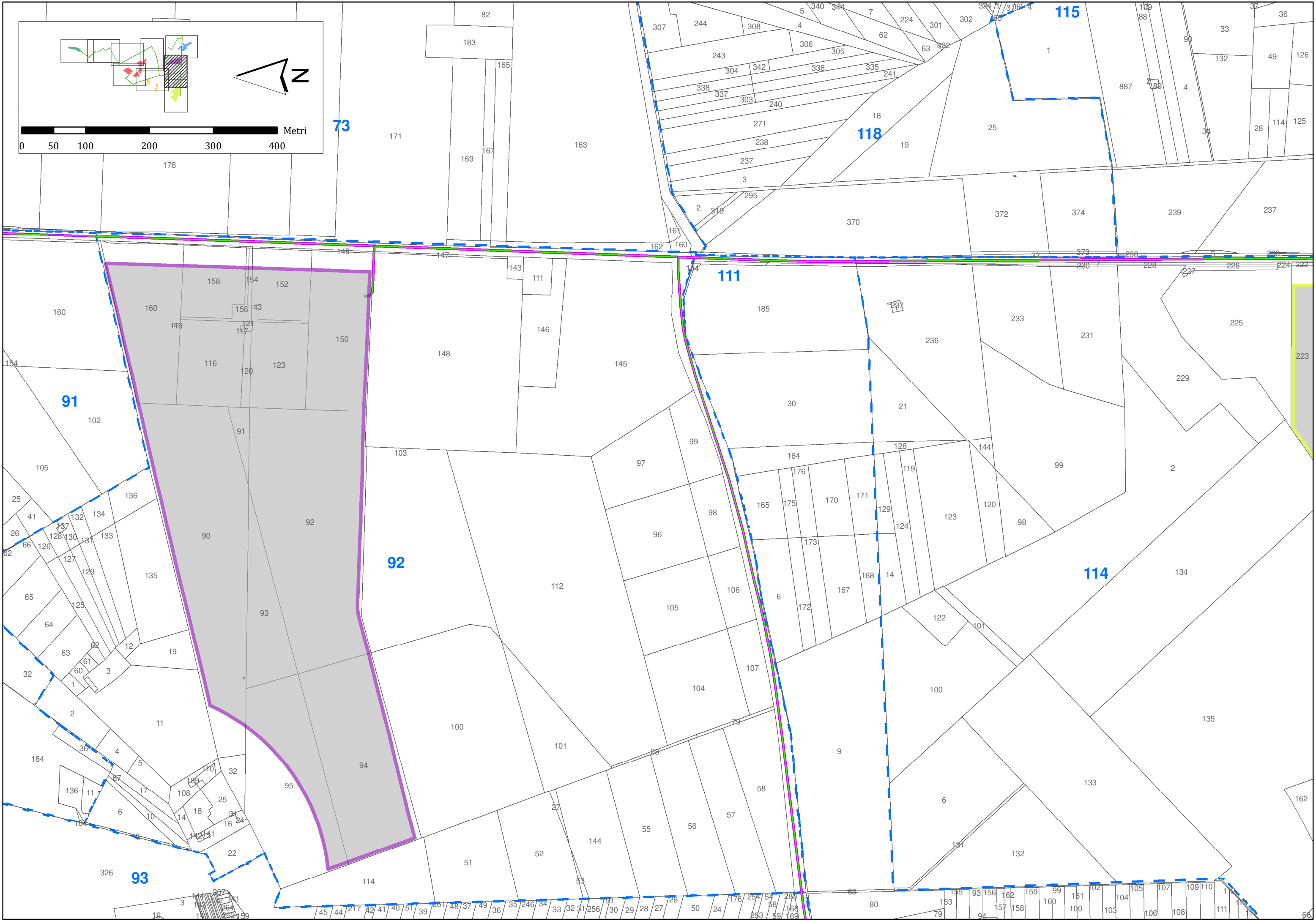
111

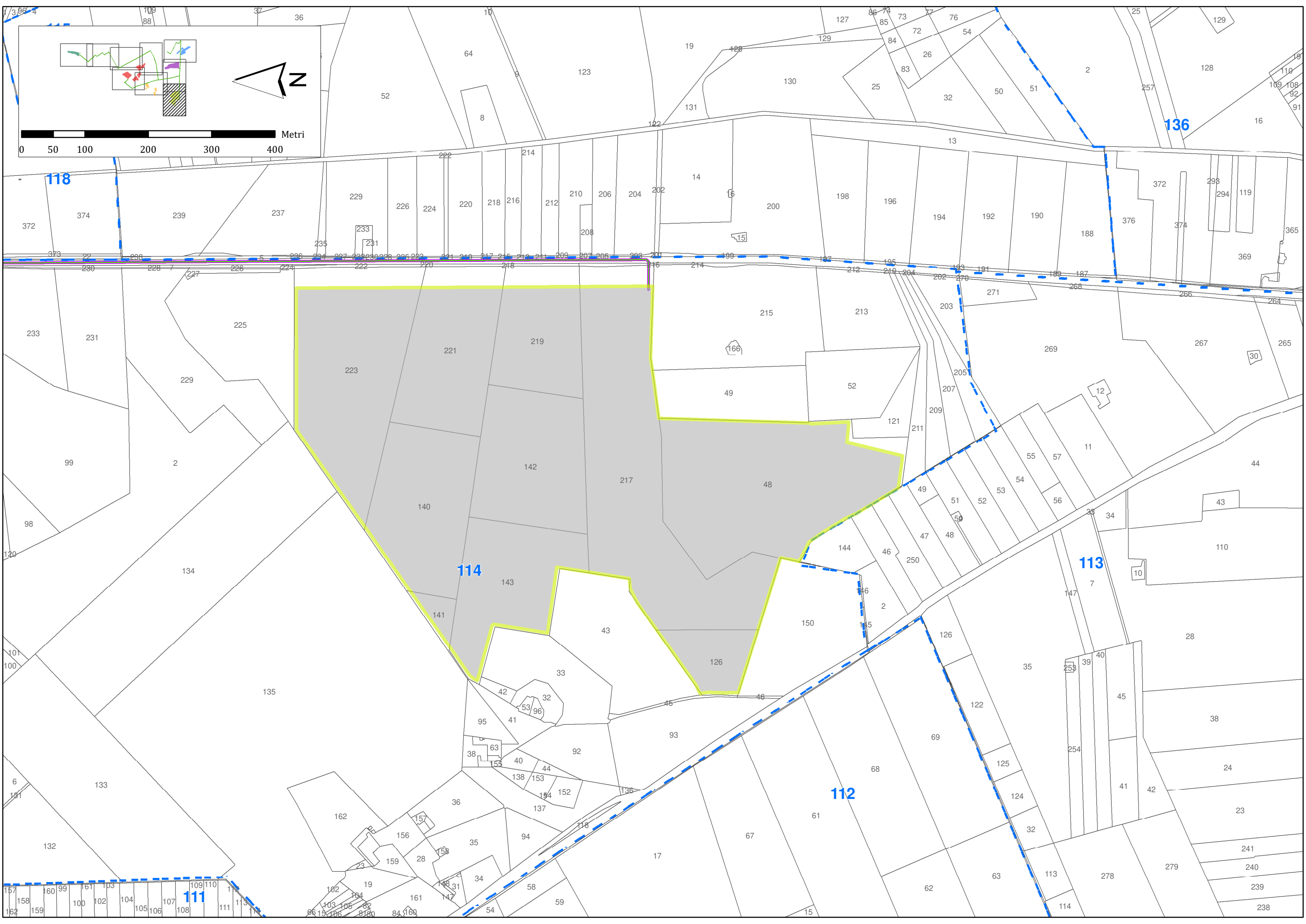
91

92

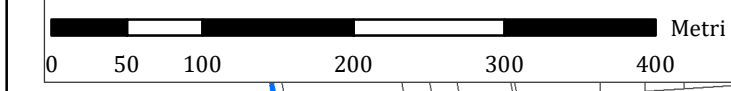
114

93





1398-4



118

136

114

113

112

111