



Autorità di Sistema Portuale
del Mare Adriatico Meridionale

Bari, Brindisi, Manfredonia, Barletta, Monopoli


Autorità di Sistema Portuale del Mare Adriatico Meridionale



PORTO DI BRINDISI

PROGETTO DI FATTIBILITÀ TECNICA ED ECONOMICA

Banchinamento e recupero funzionale dei piazzali della colmata di Capo Bianco (ex British Gas)

R.U.P. Dott.Ing. Francesco Di Leverano	Progettazione Coordinatore di progetto Dott.Ing. Francesco Di Leverano Ing. Cristian Casilli Geom. Davide Boasso	Consulenza specialistica  Dott. Archeologo Gianpaolo Colucci Indagine geoelettrica Geol. Carmine Nigro	
Titolo elaborato INDAGINI ARCHEOLOGICHE STRUMENTALI accordo ai sensi dell'art. 25 co. 14 del D.lgs. 50/2016 e s.m.i. stipulato in data 19 dicembre 2022 MINISTERO DELLA CULTURA SOPRINTENDENZA ARCHEOLOGIA BELLE ARTI E PAESAGGIO Brindisi e Lecce AUTORITÀ DI SISTEMA PORTUALE DEL MARE ADRIATICO MERIDIONALE		Elaborato TAVOLE 1-25	
GEOELETTRICA COSTIERA EMERSA E SOMMERSA		Scala	
Data Gennaio 2023	Preparato	Controllato	Approvato
Revisione	Data		

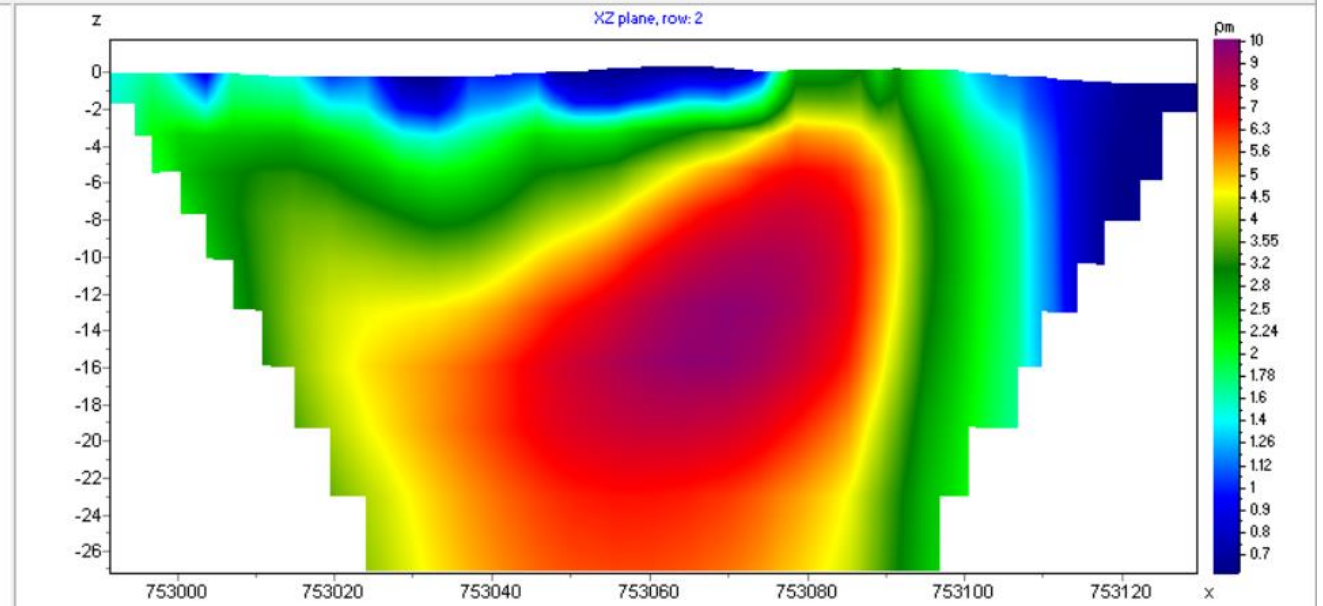
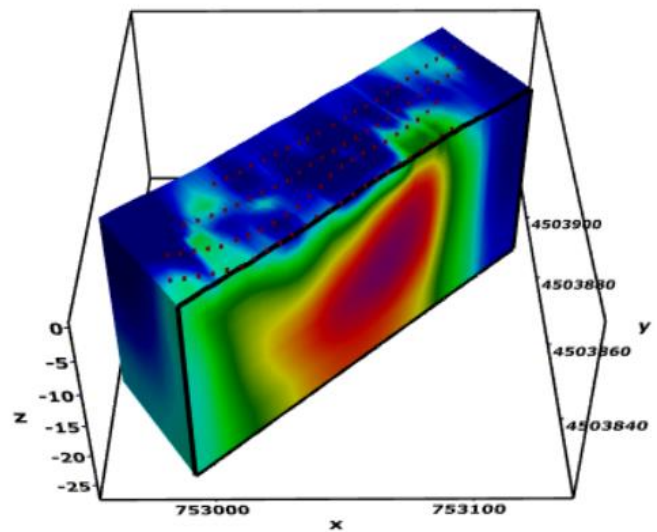
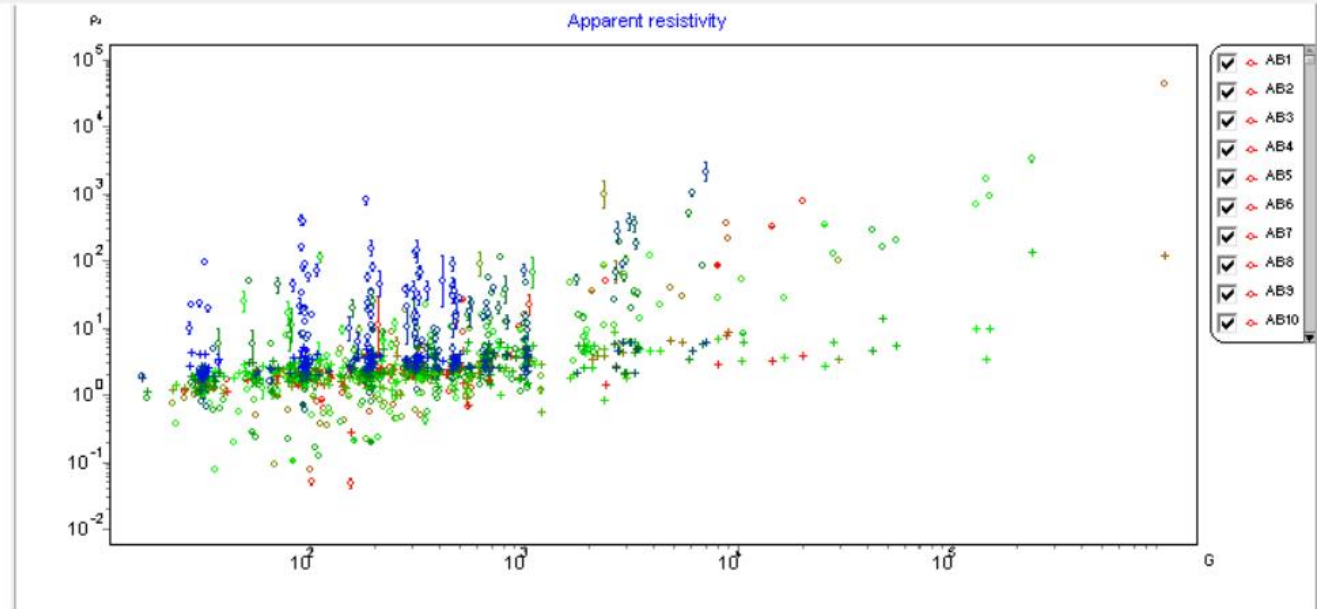
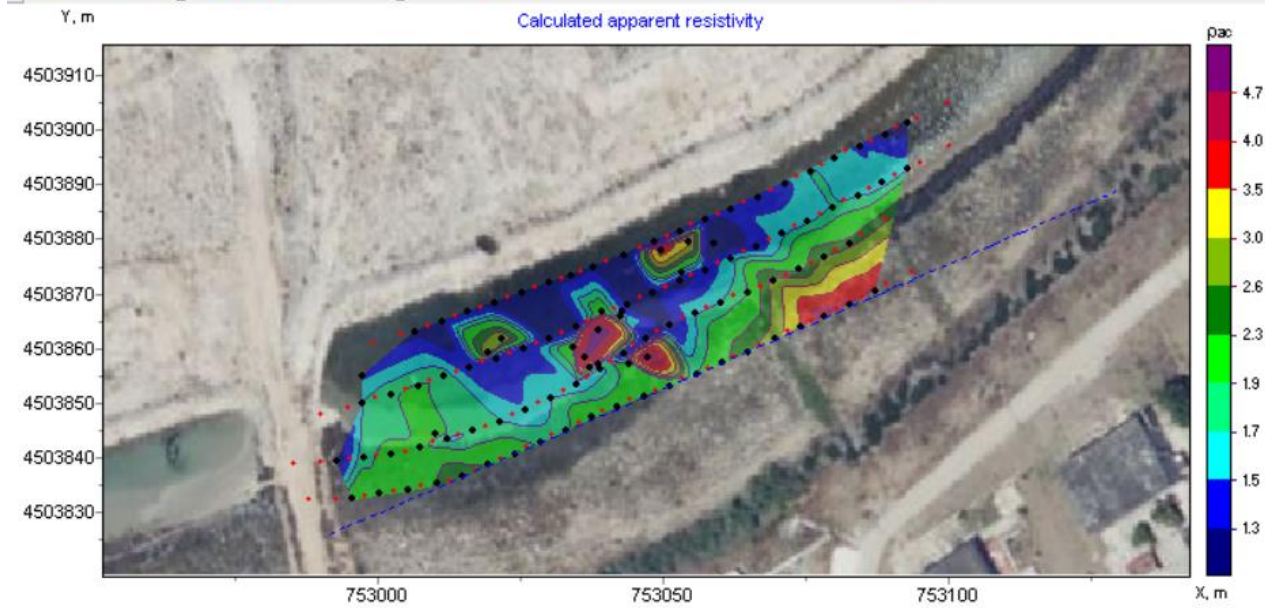


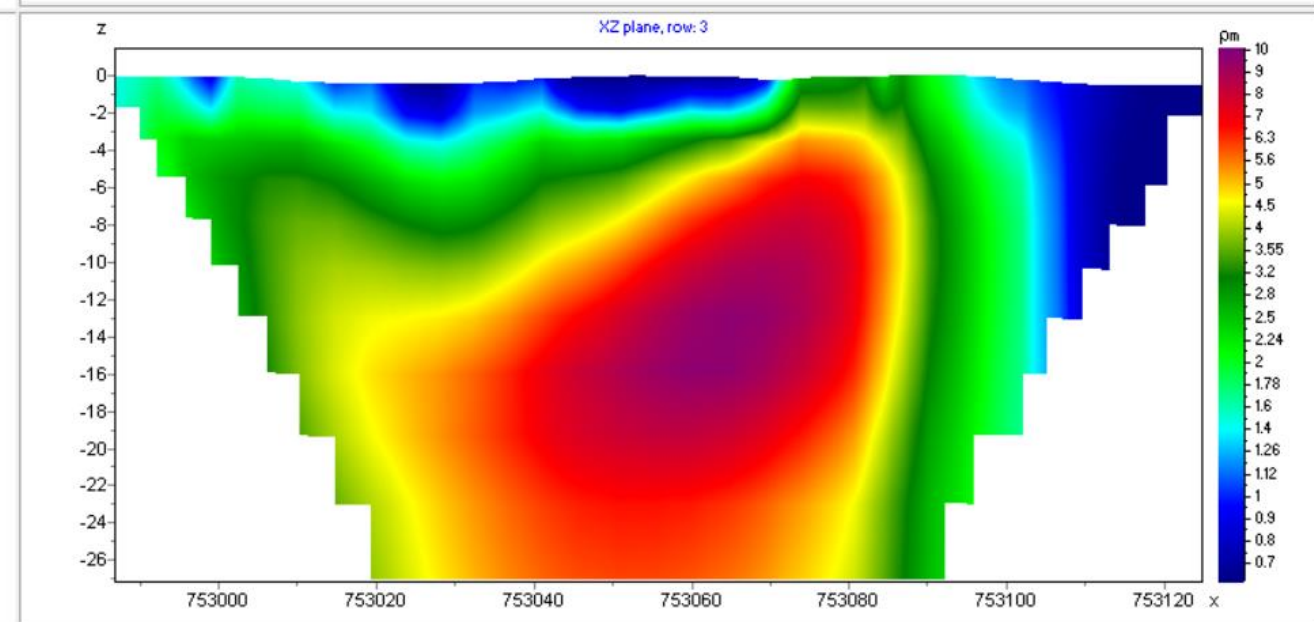
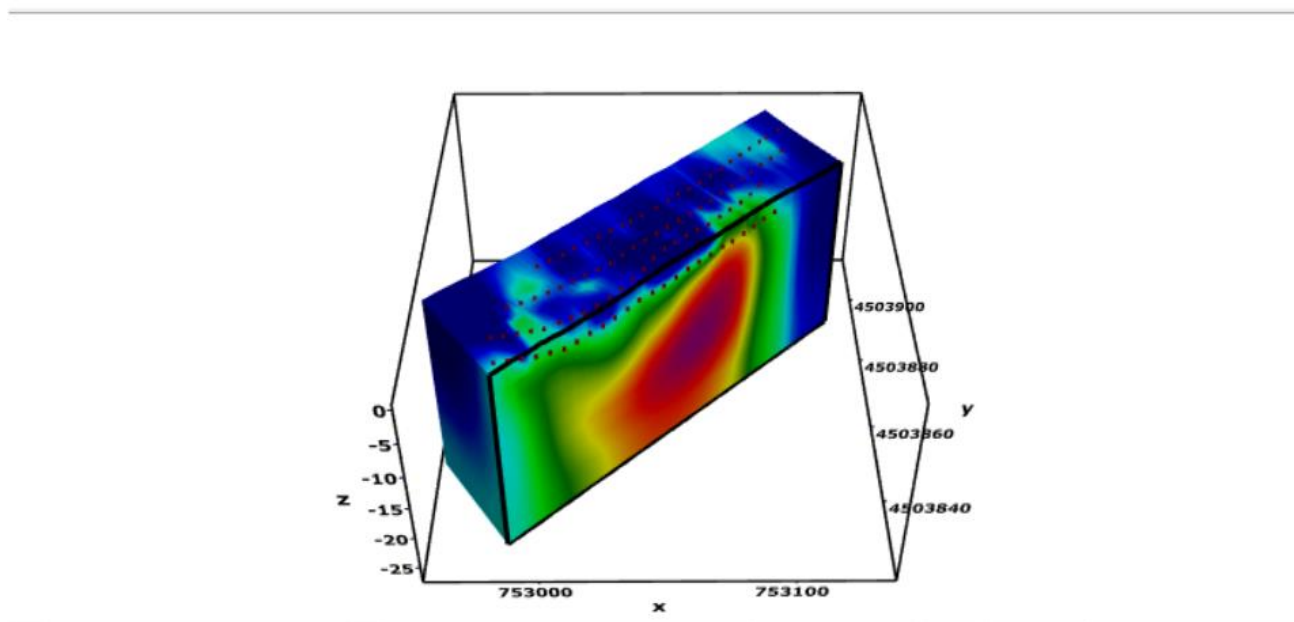
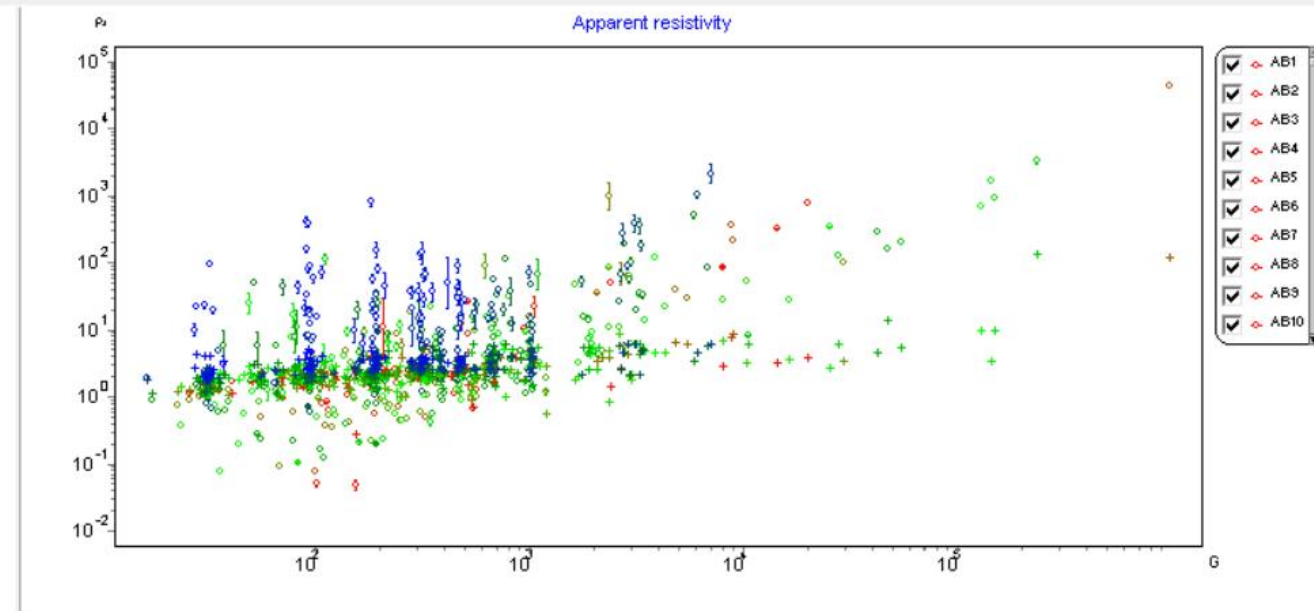
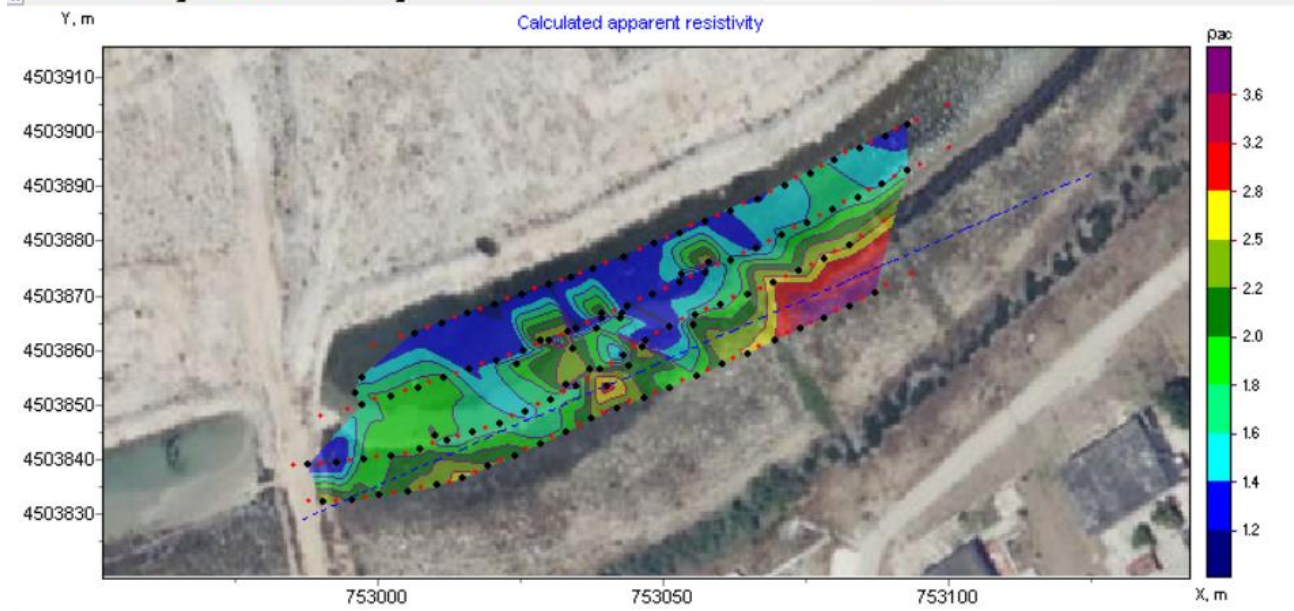
TAV. 1

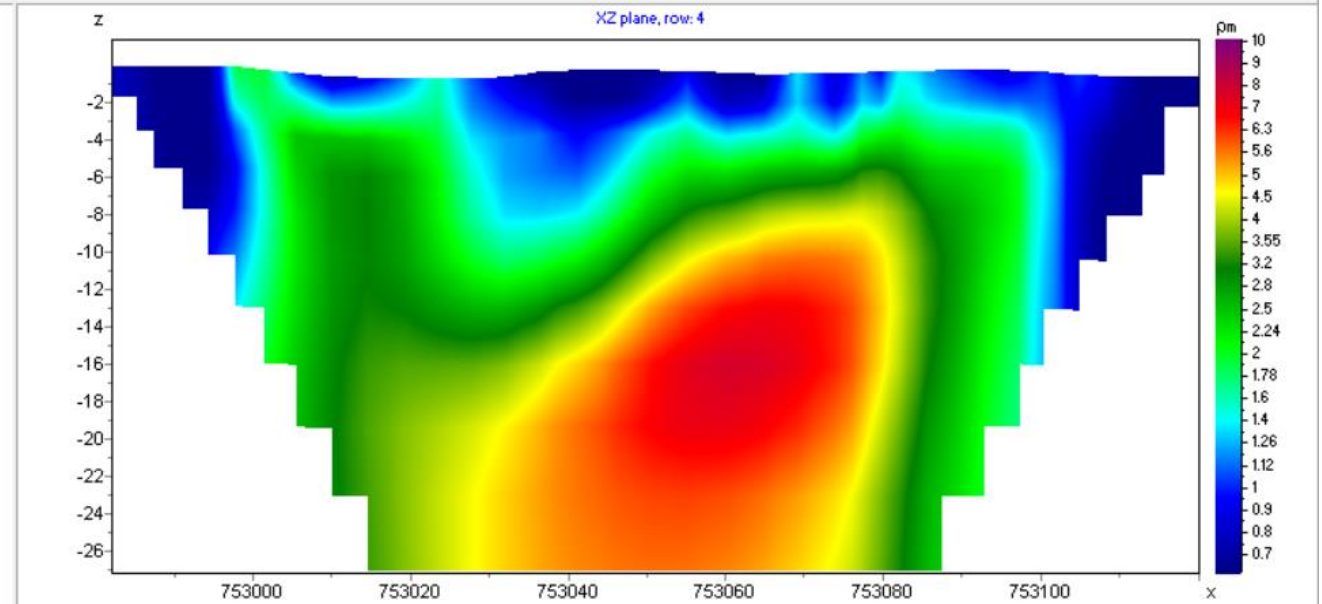
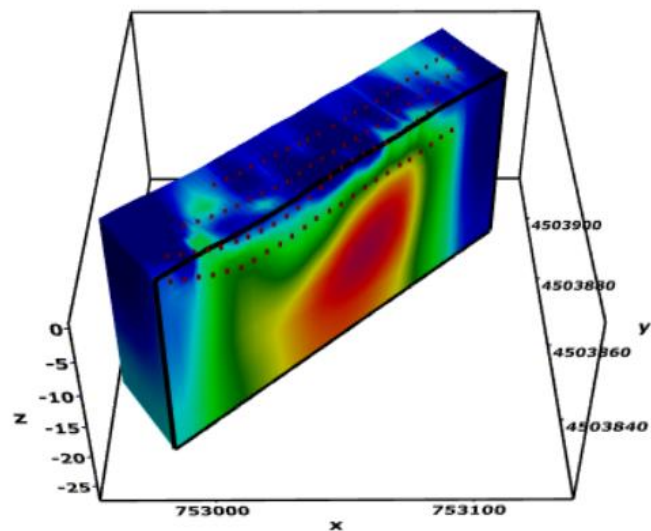
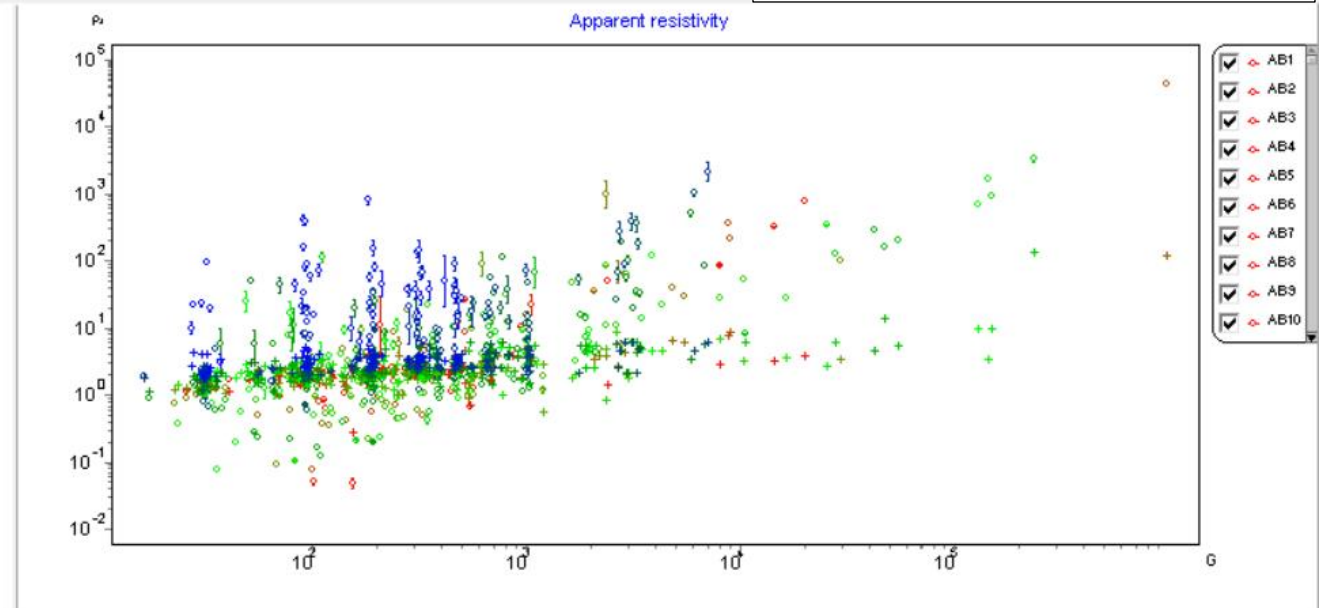
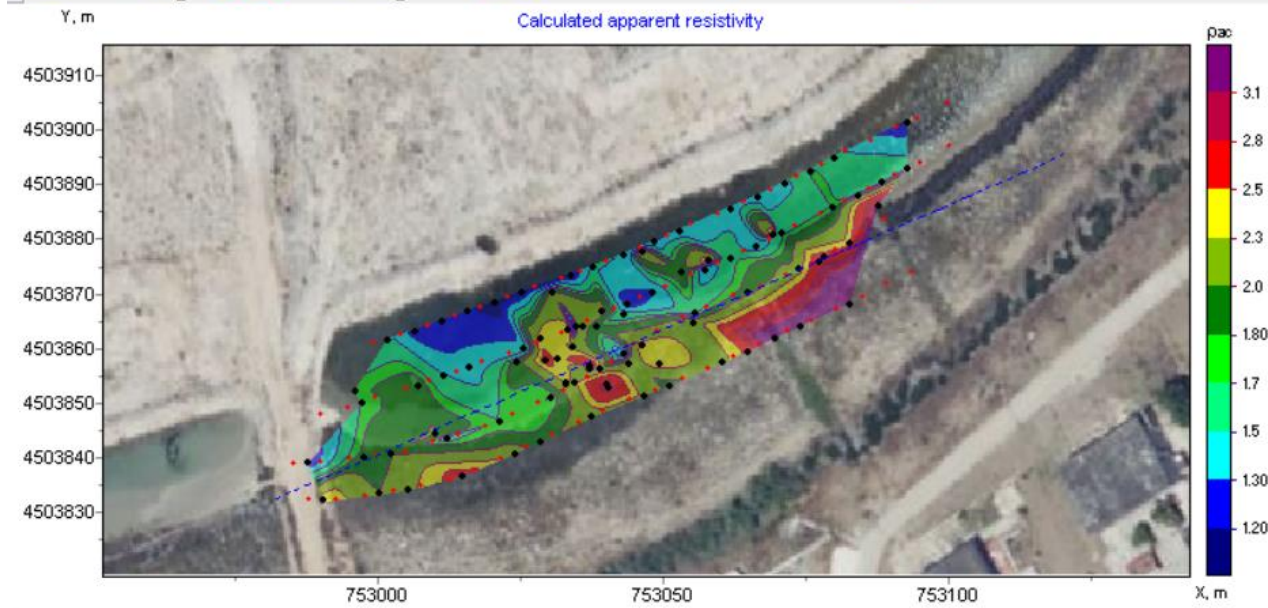
Ortofoto georiferita/punti di acquisizione

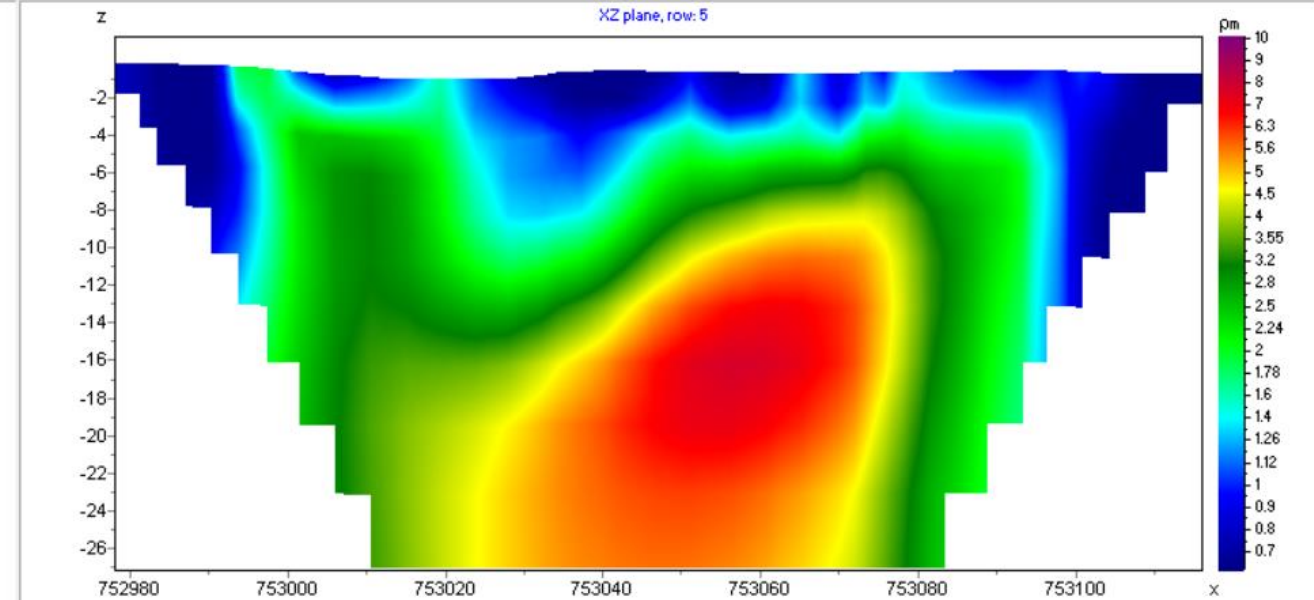
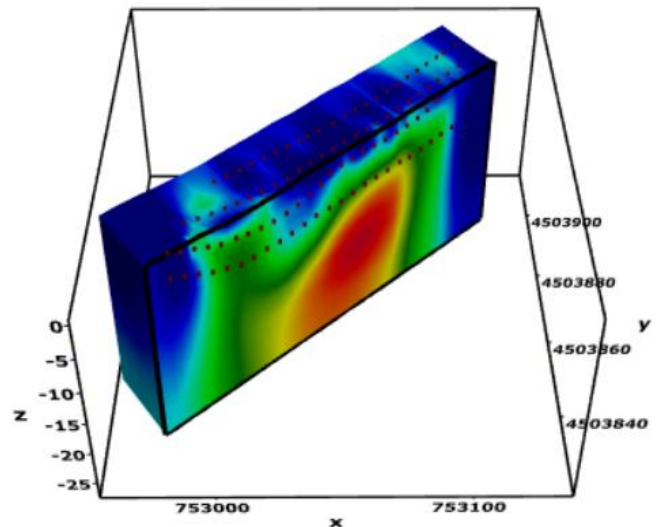
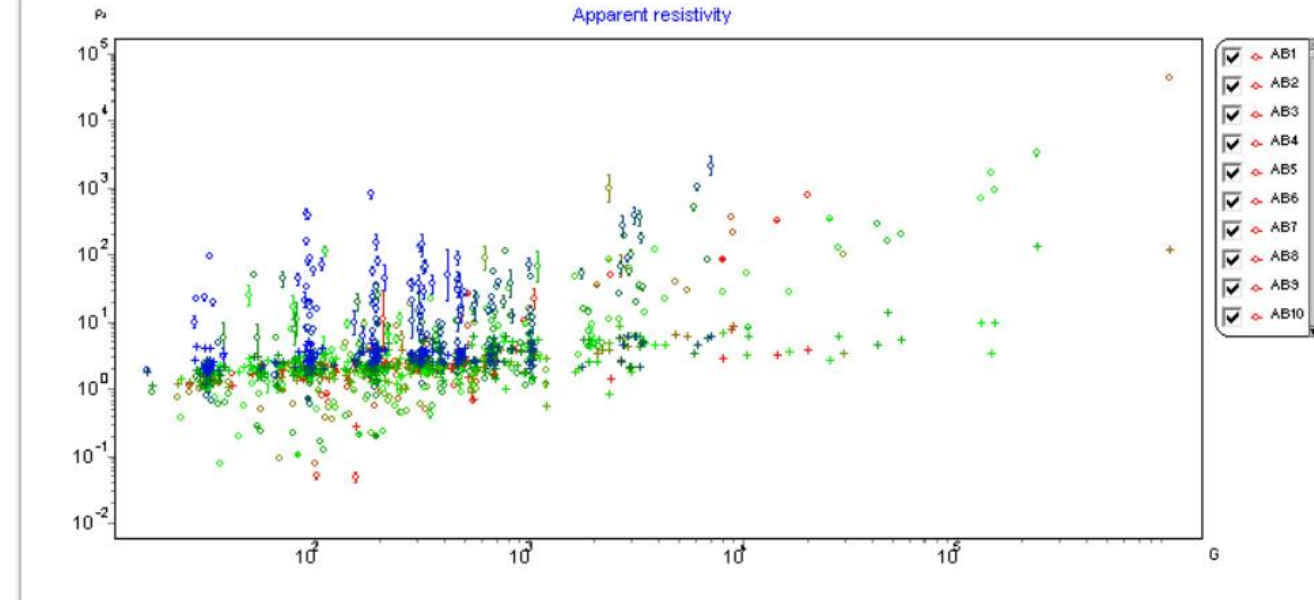
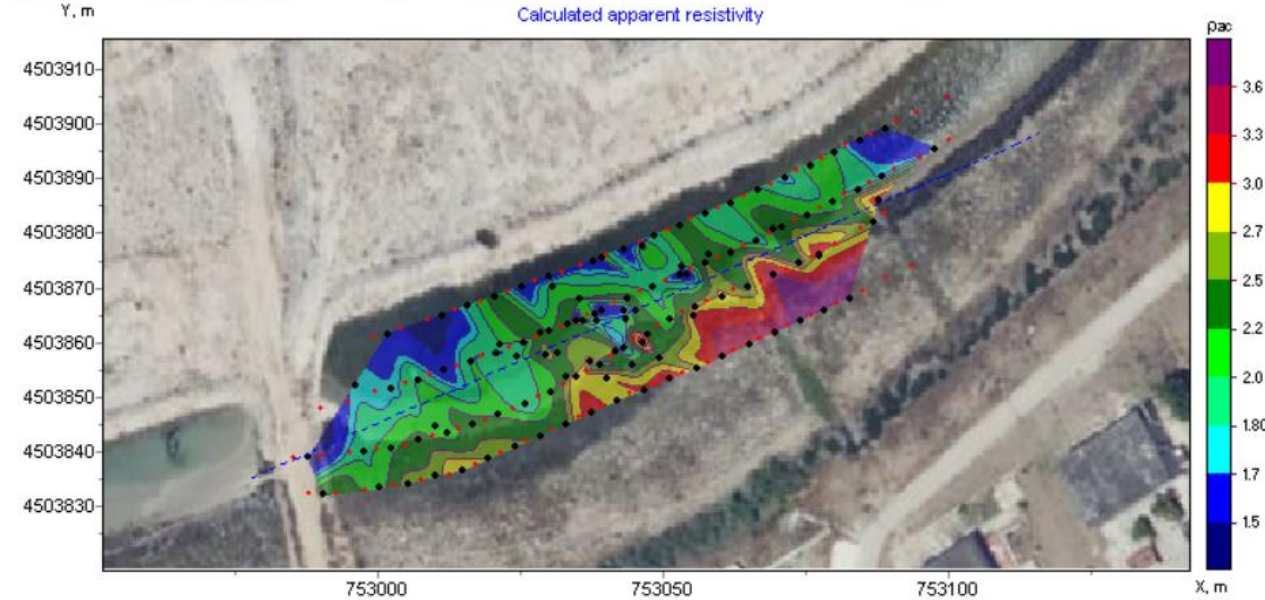
Sistema di riferimento WGS84-zona 33N

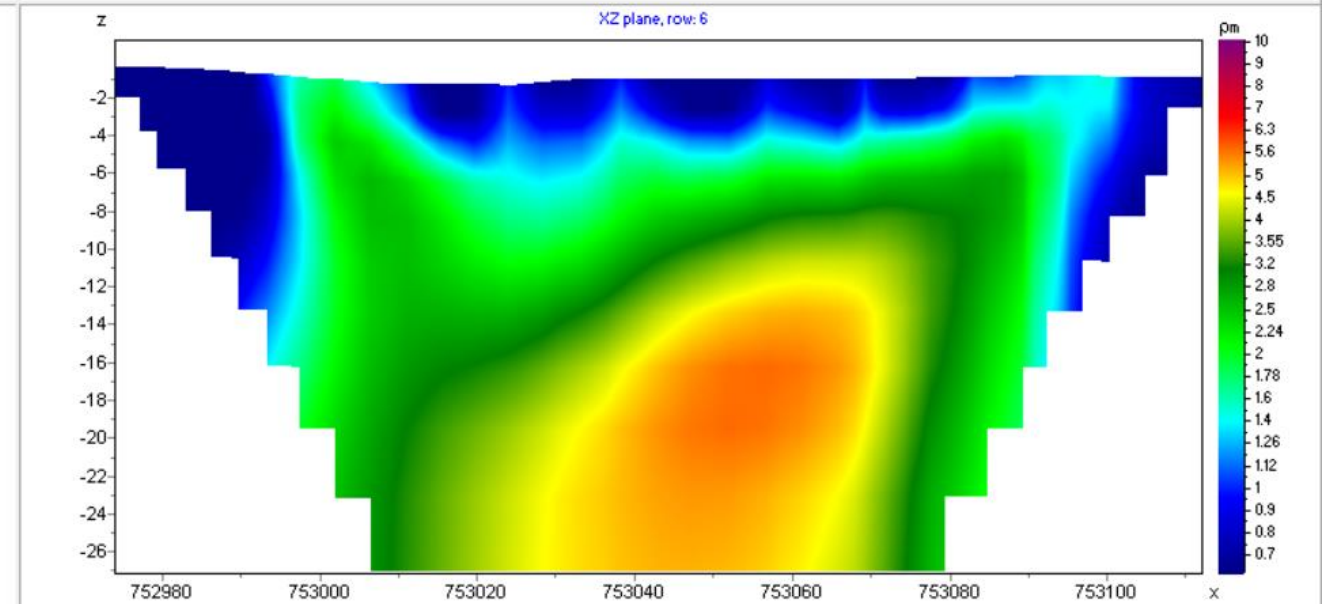
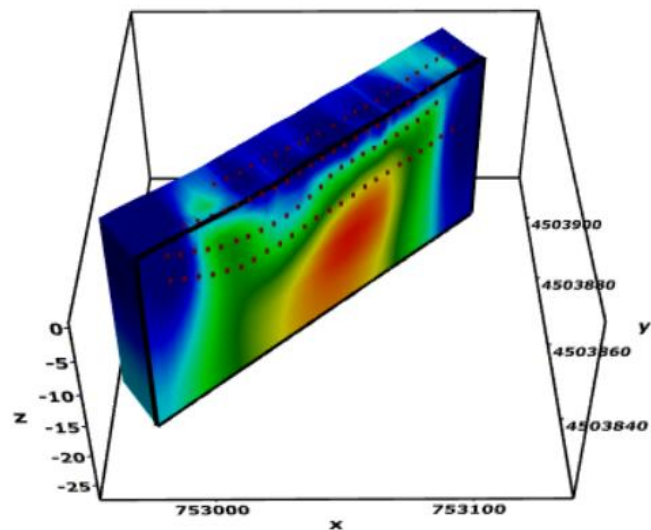
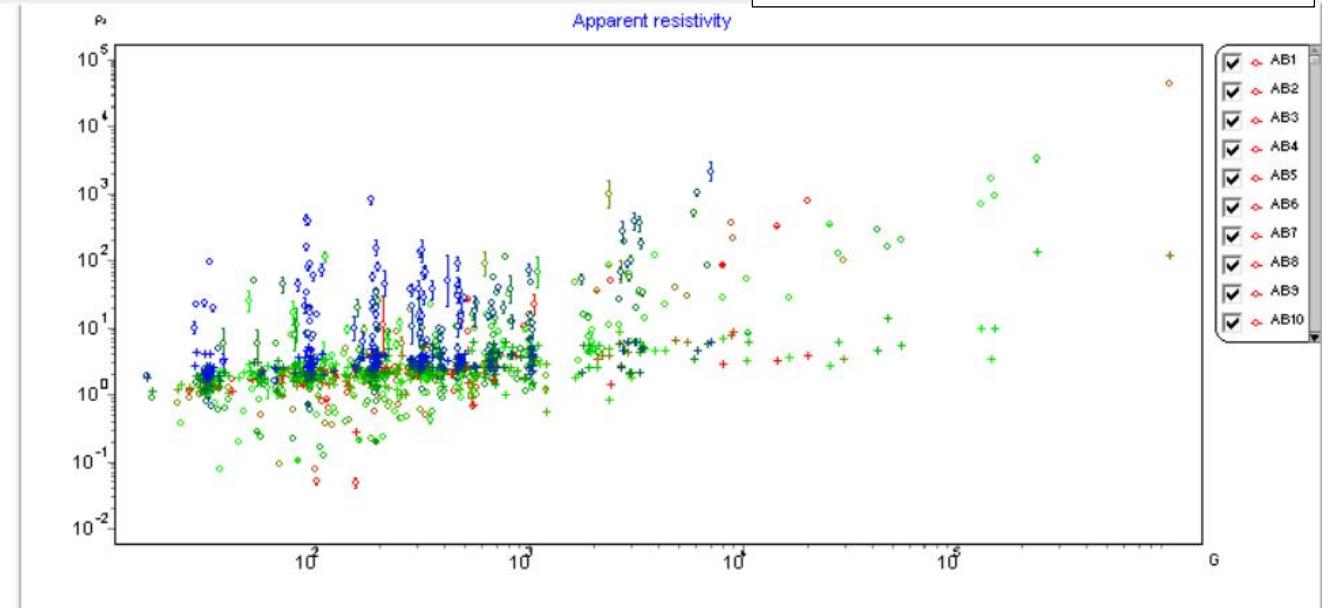
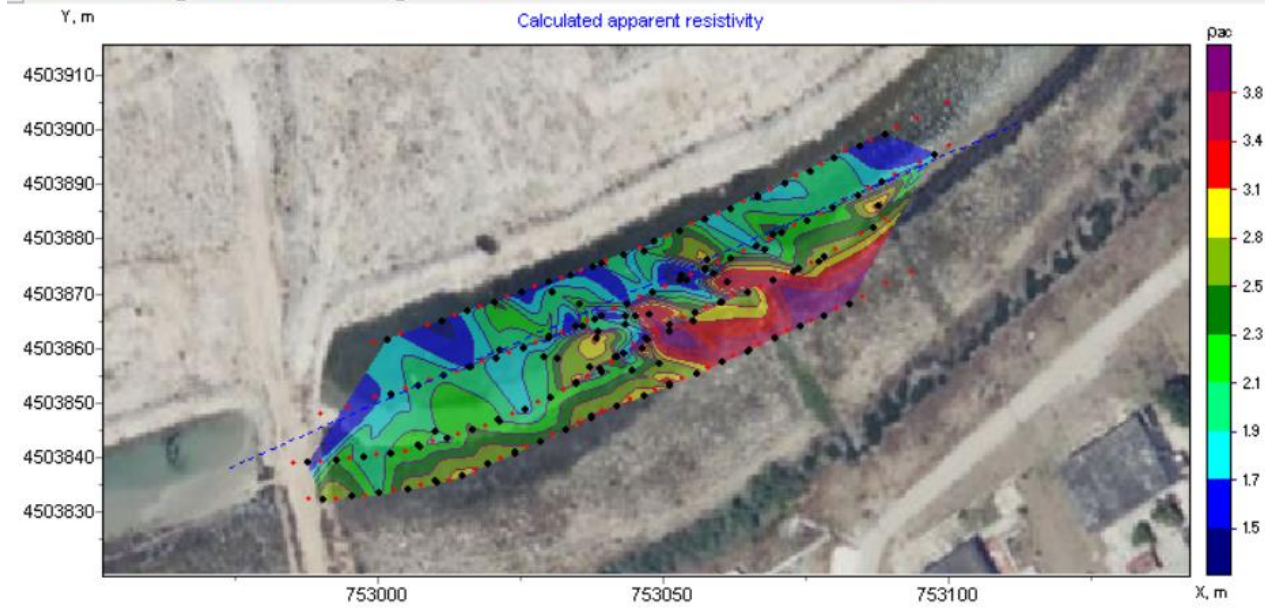


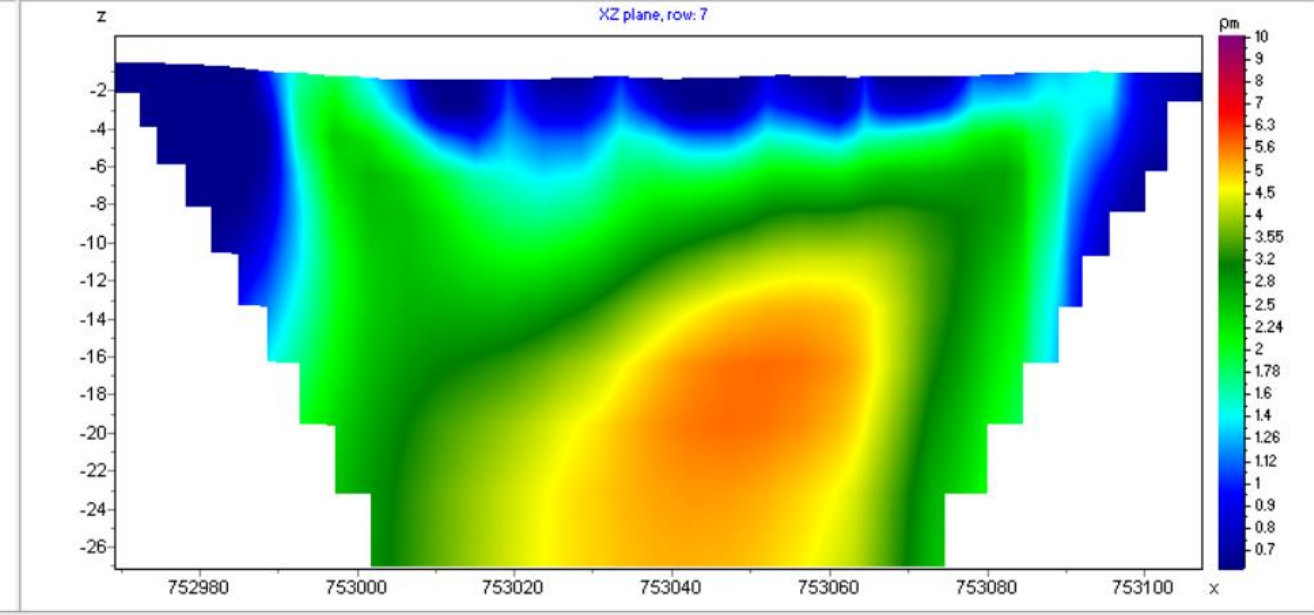
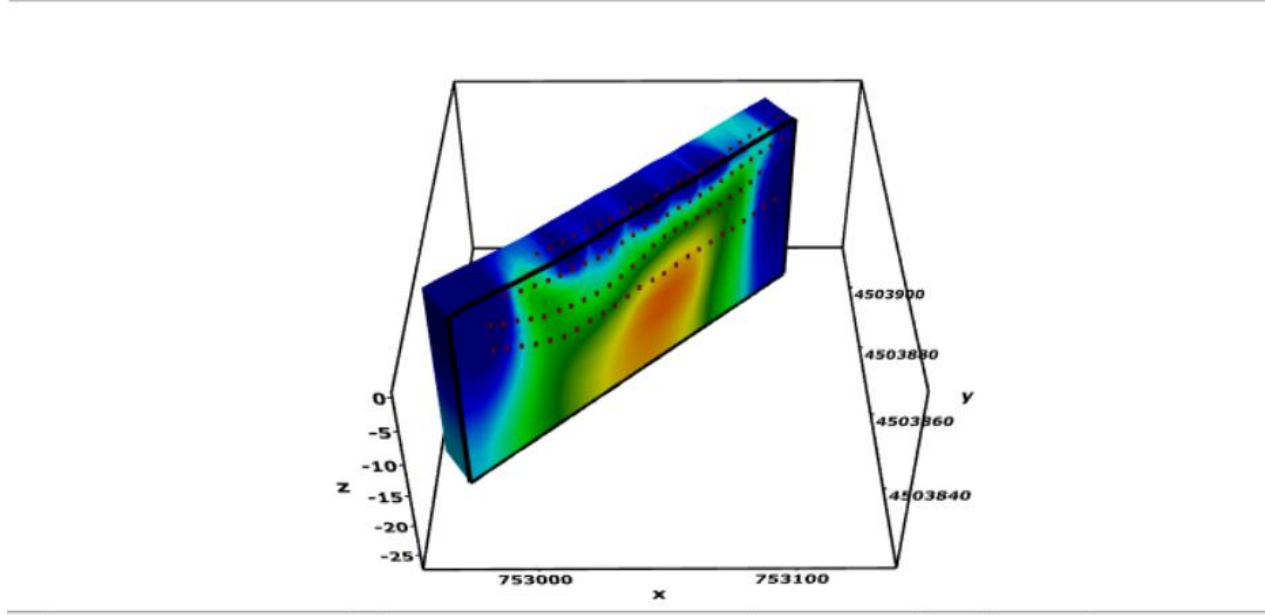
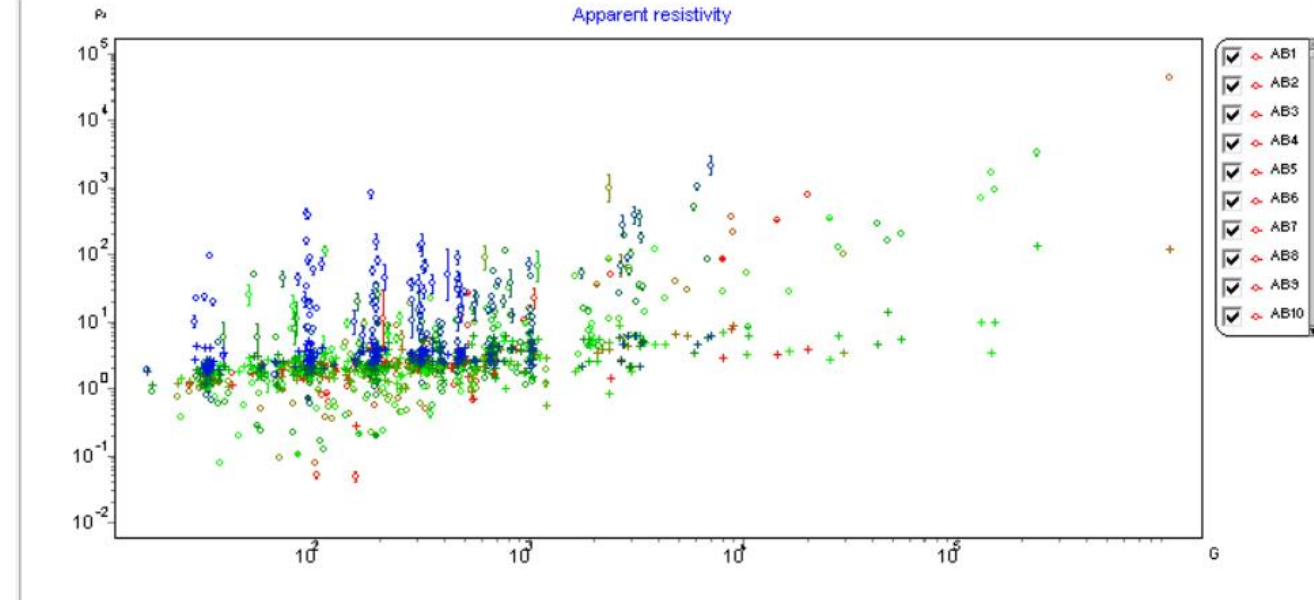
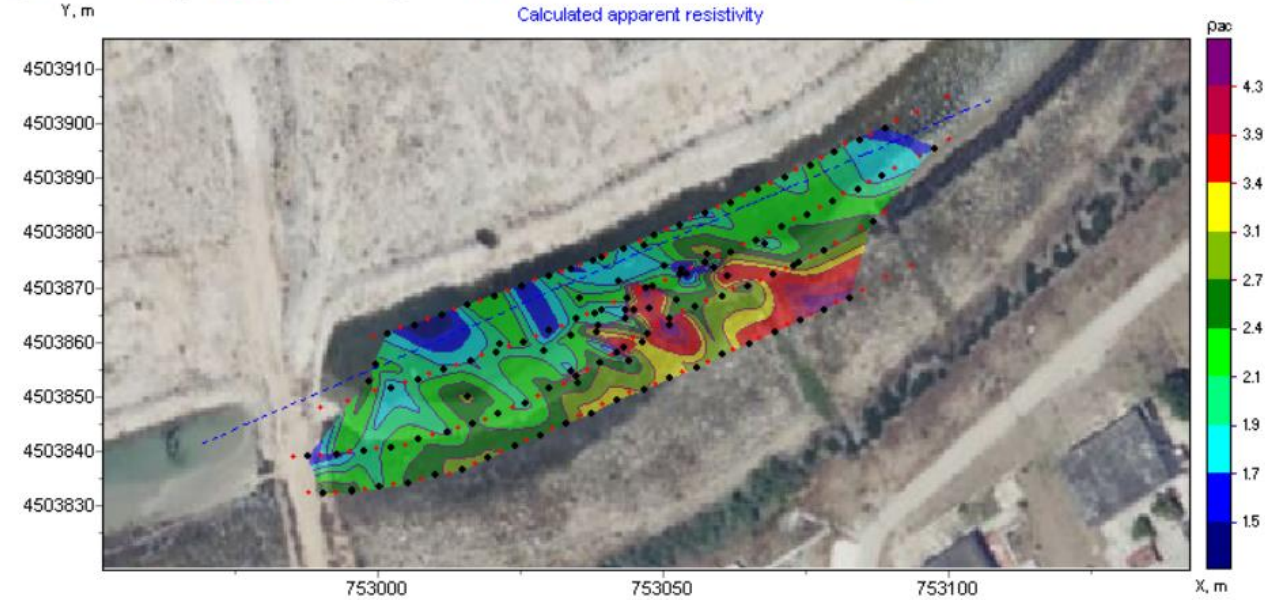


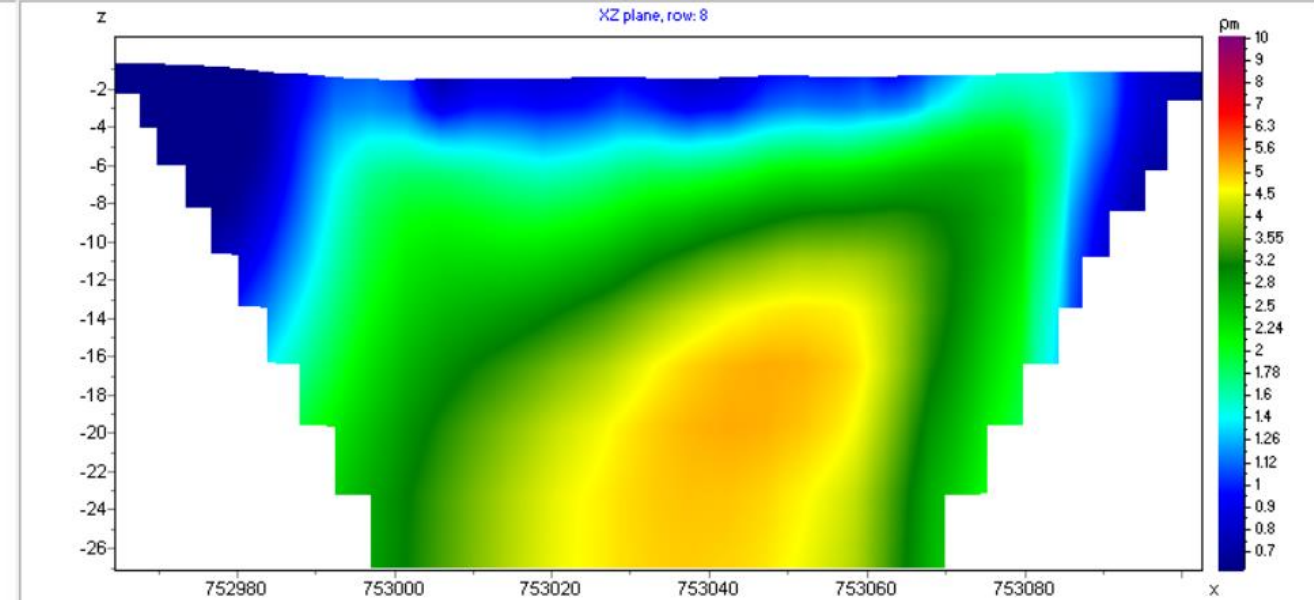
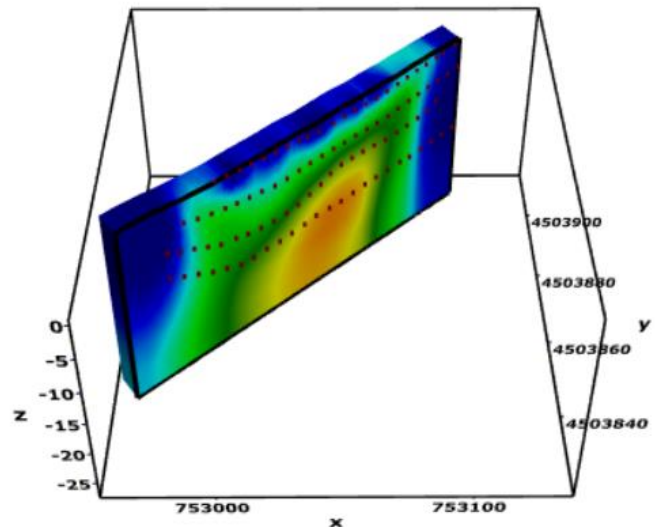
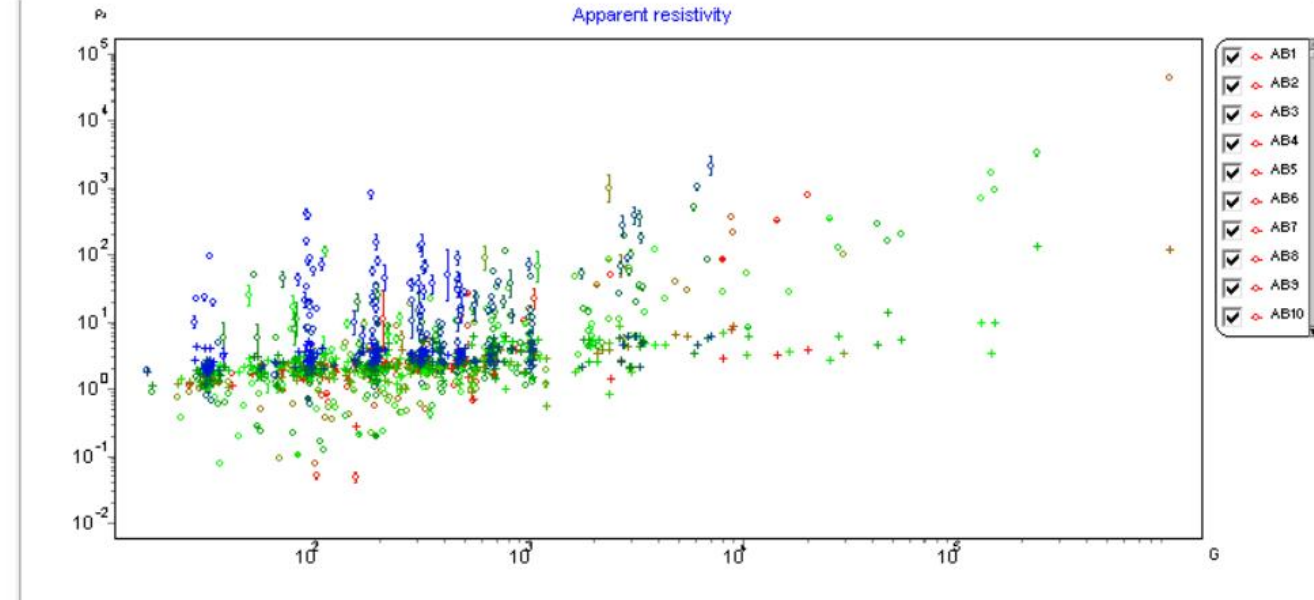
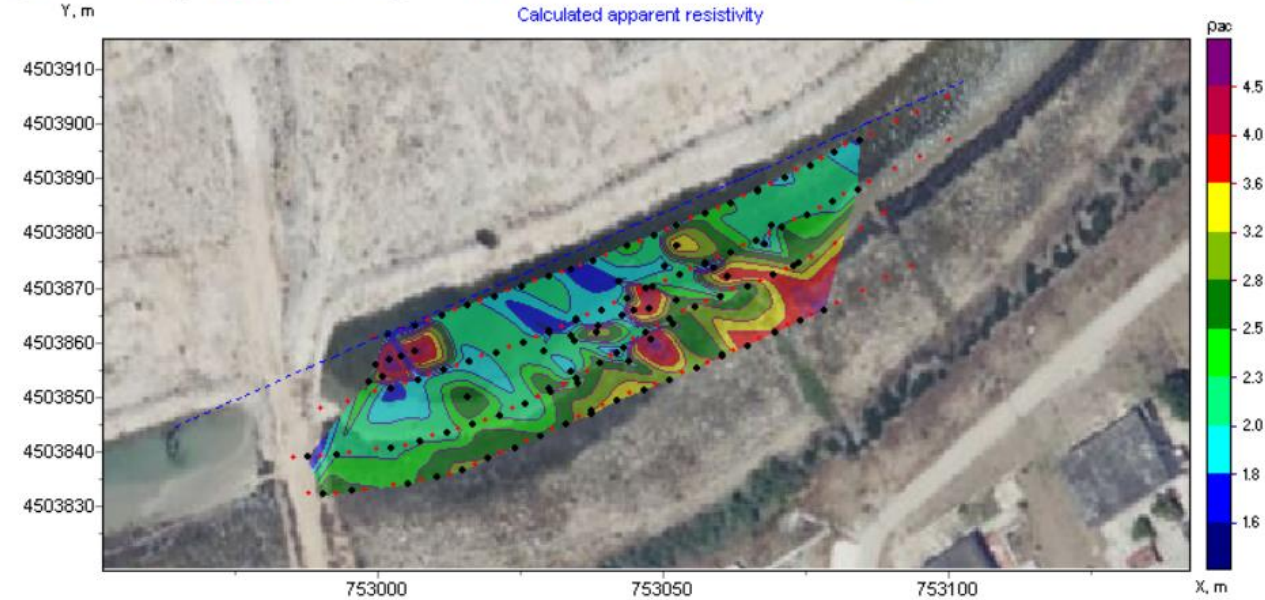












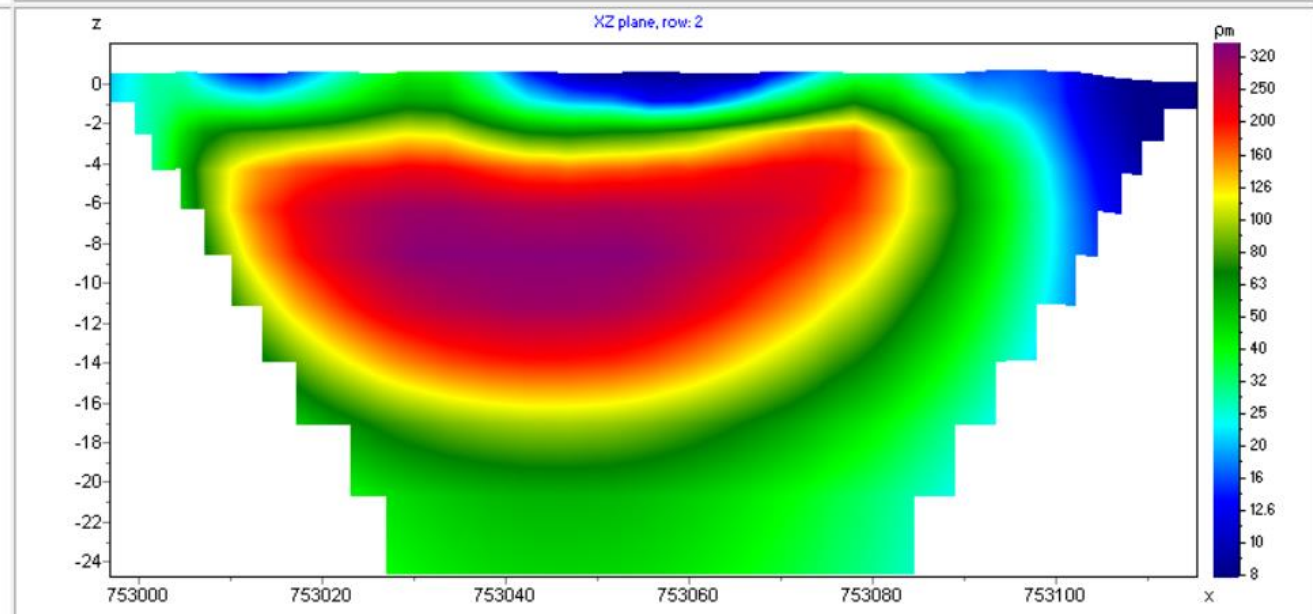
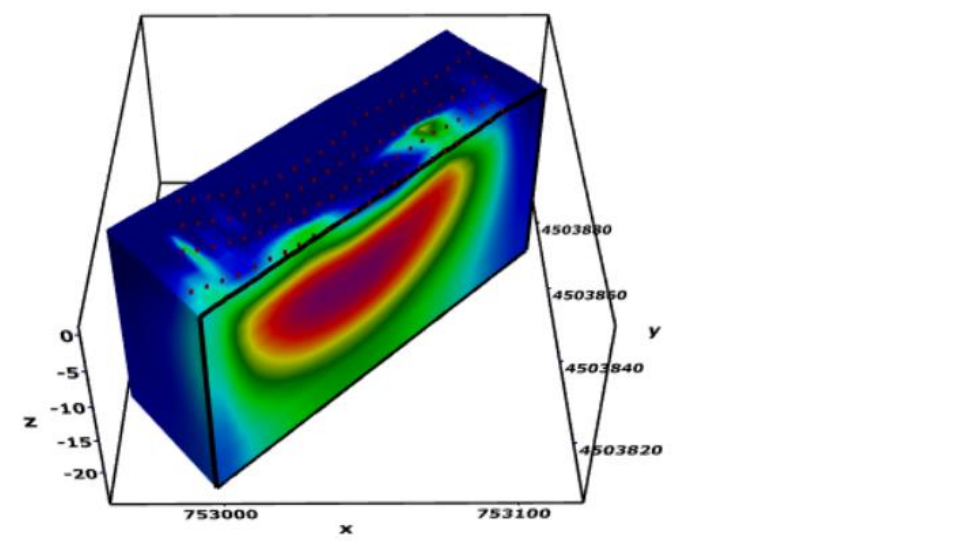
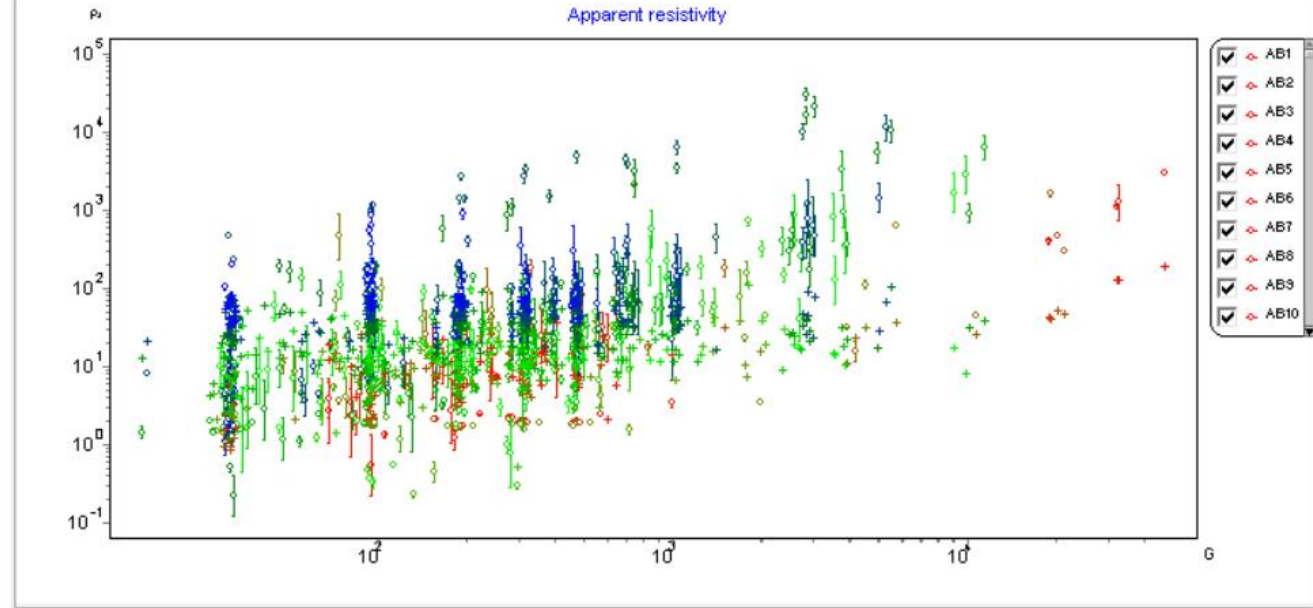
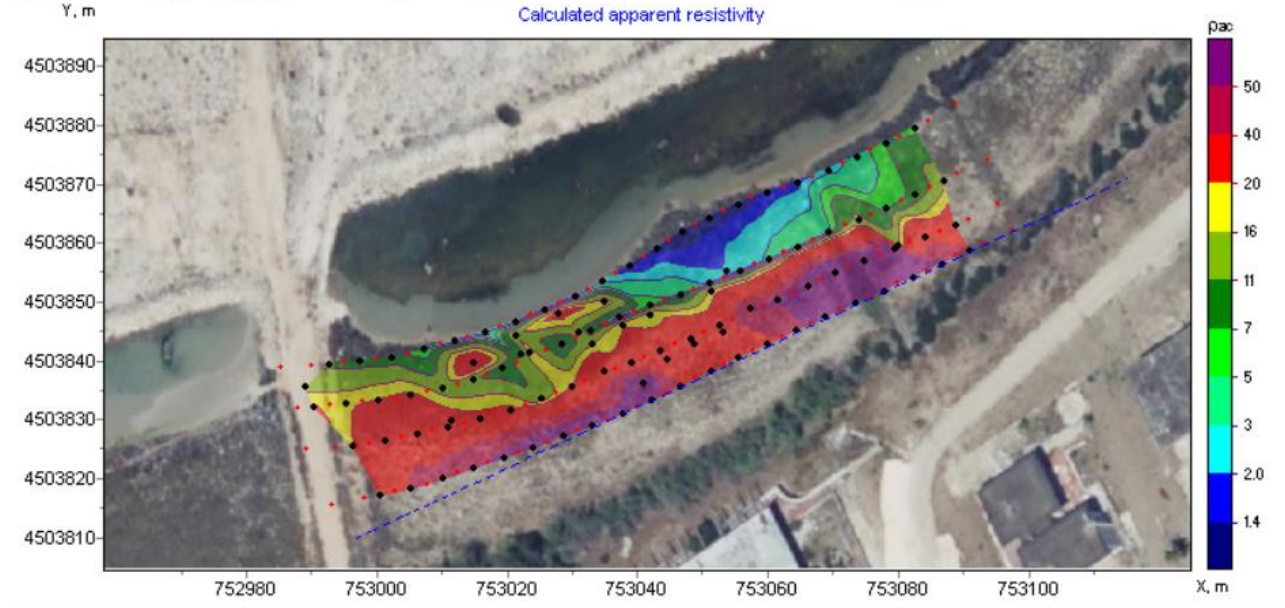


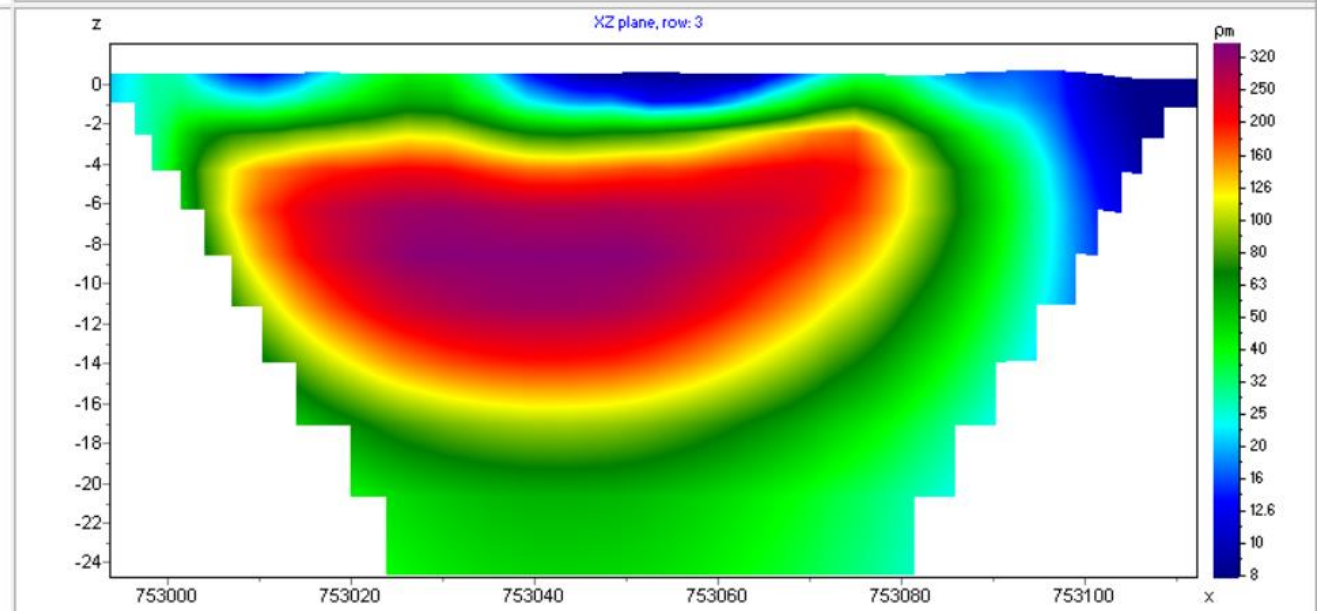
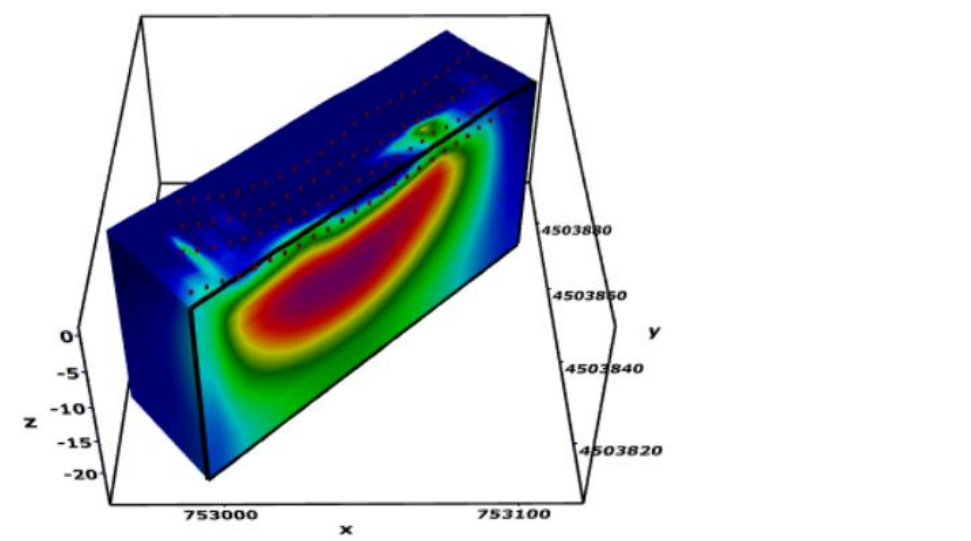
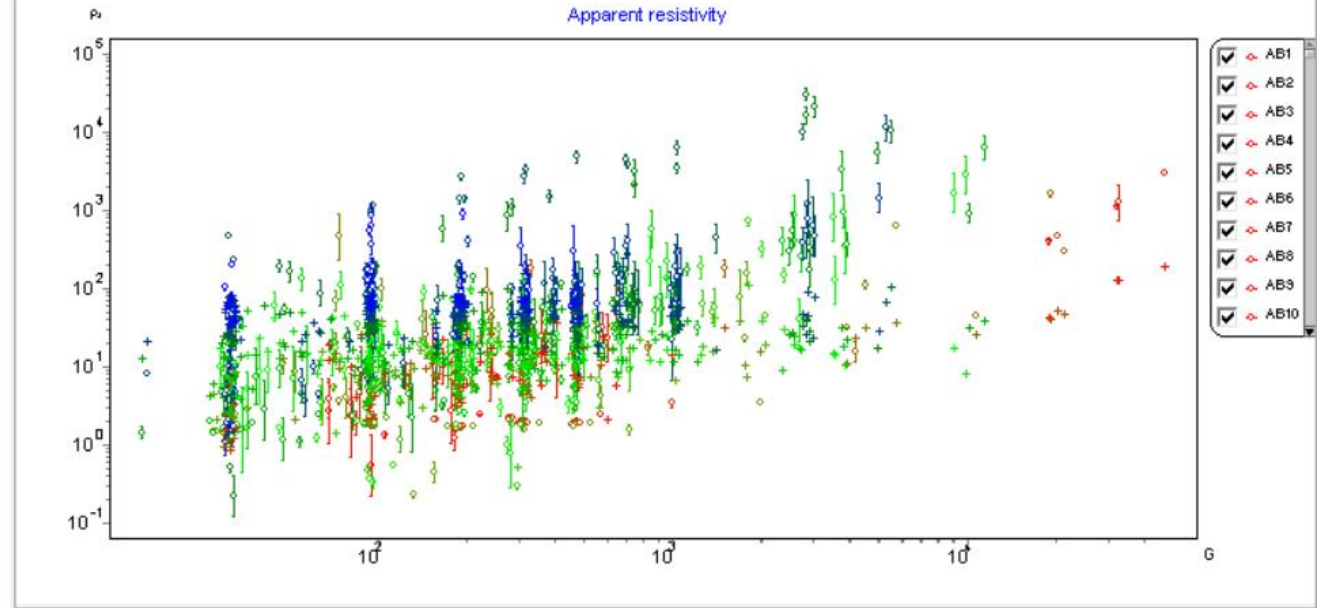
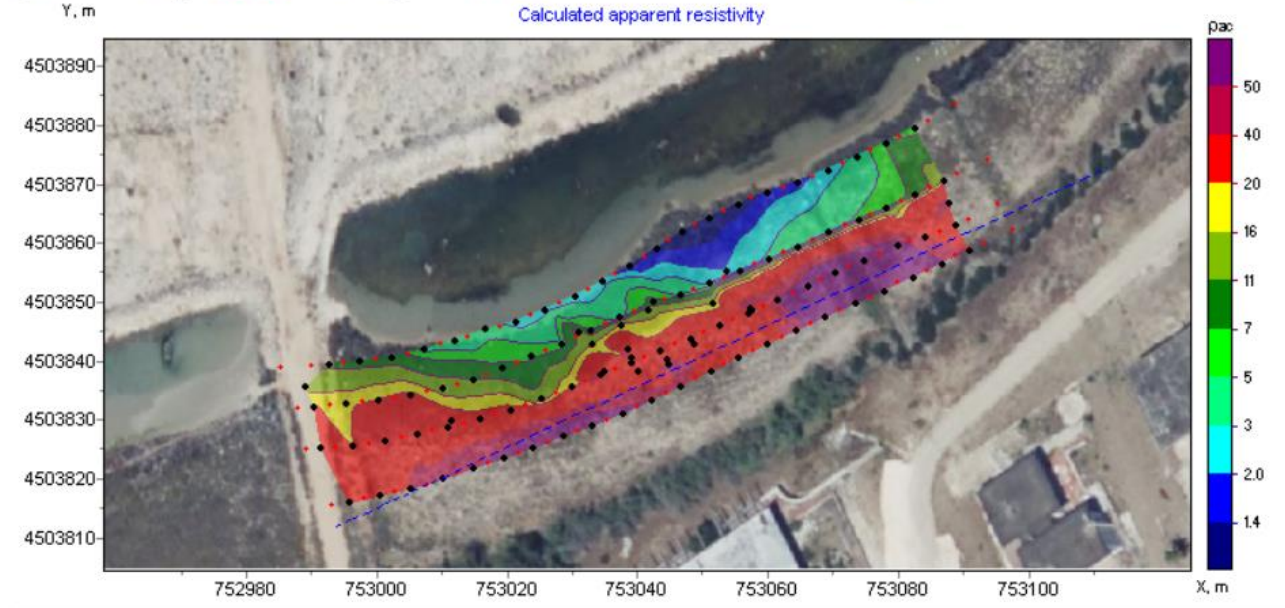
Campo 2 TAV. 9

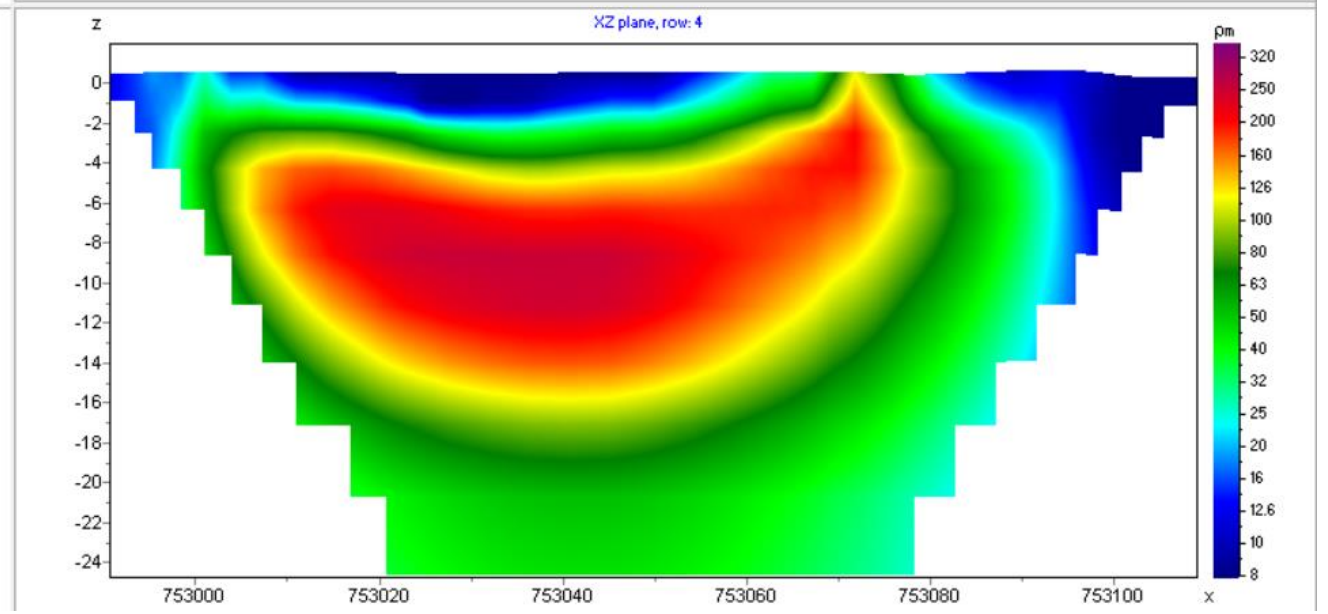
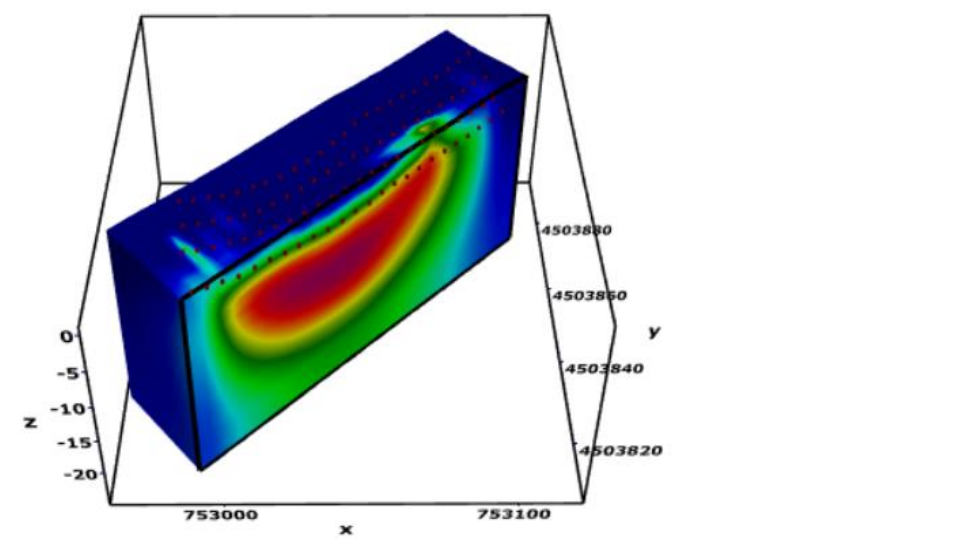
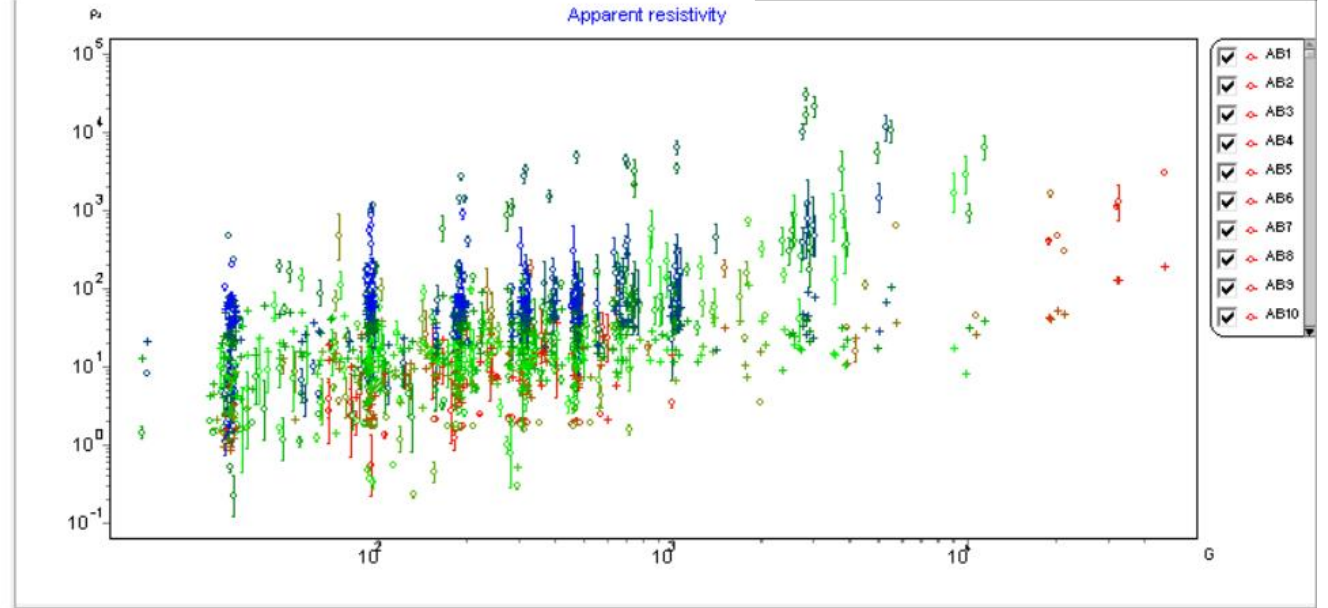
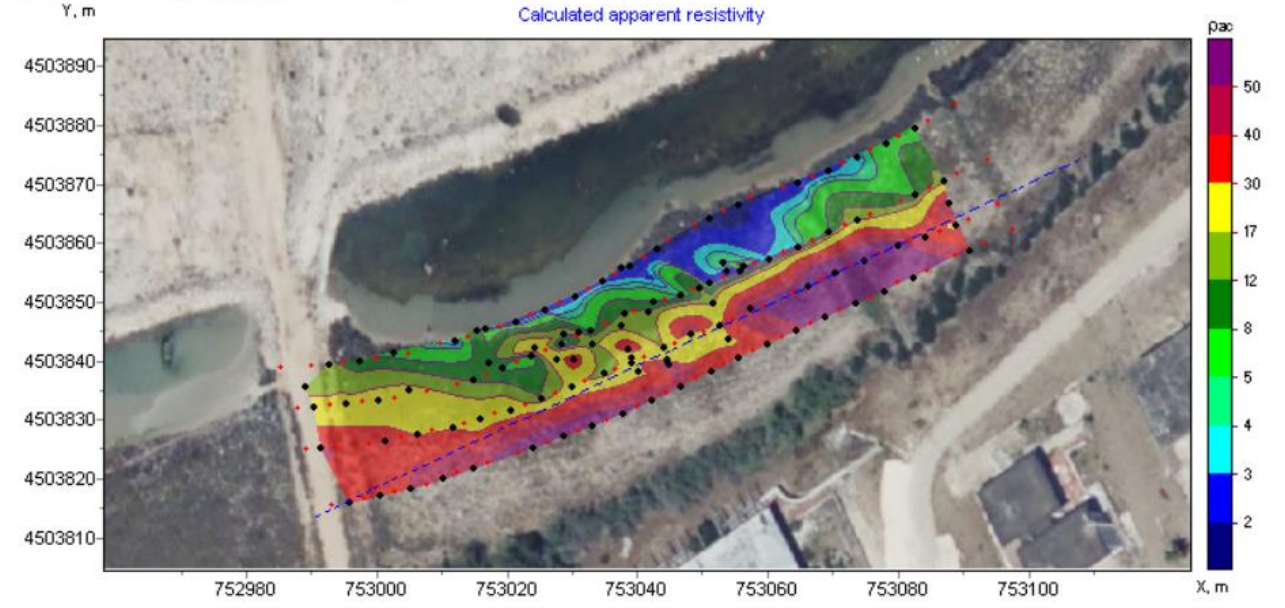
Ortofoto georiferita/punti di acquisizione

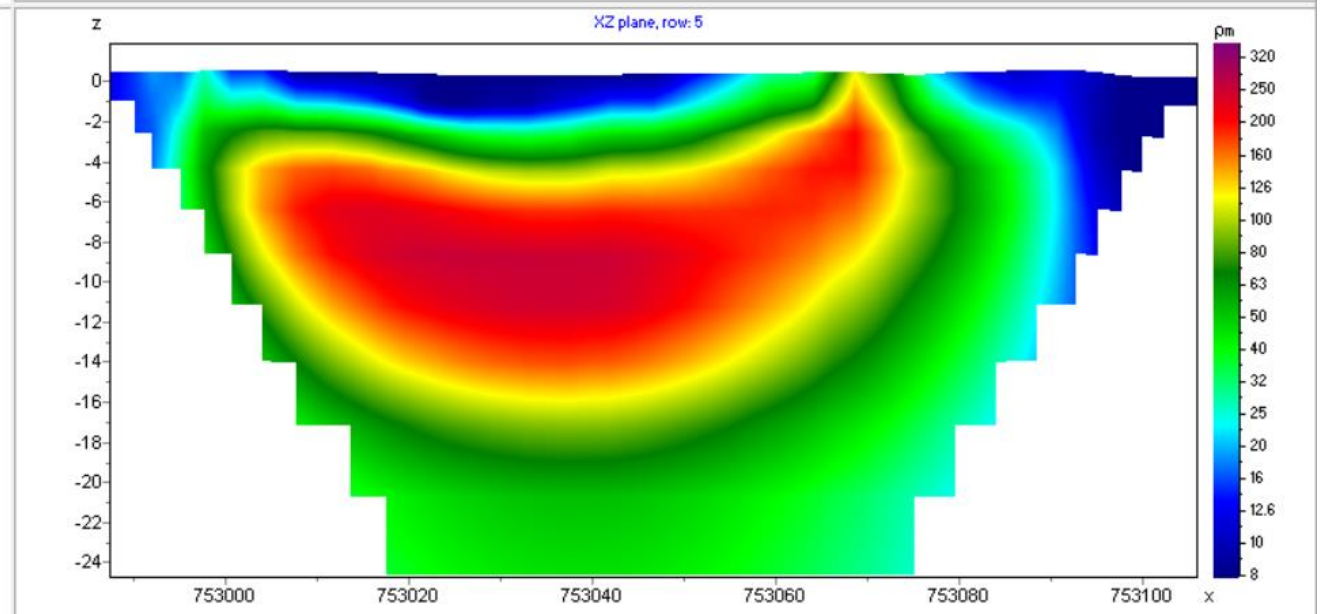
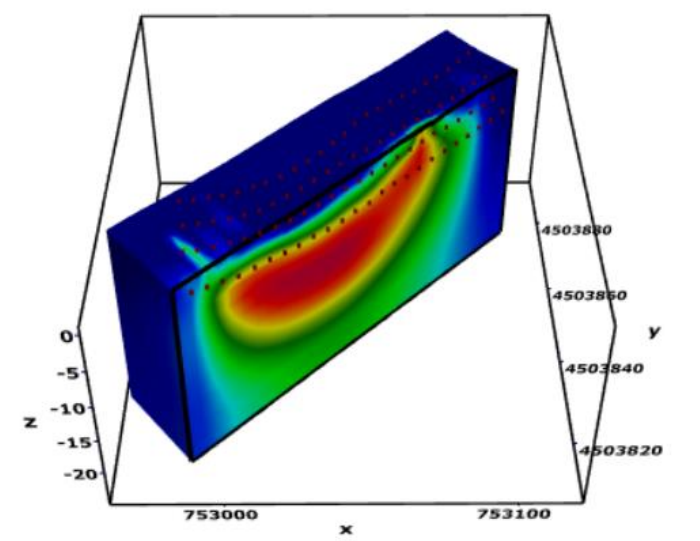
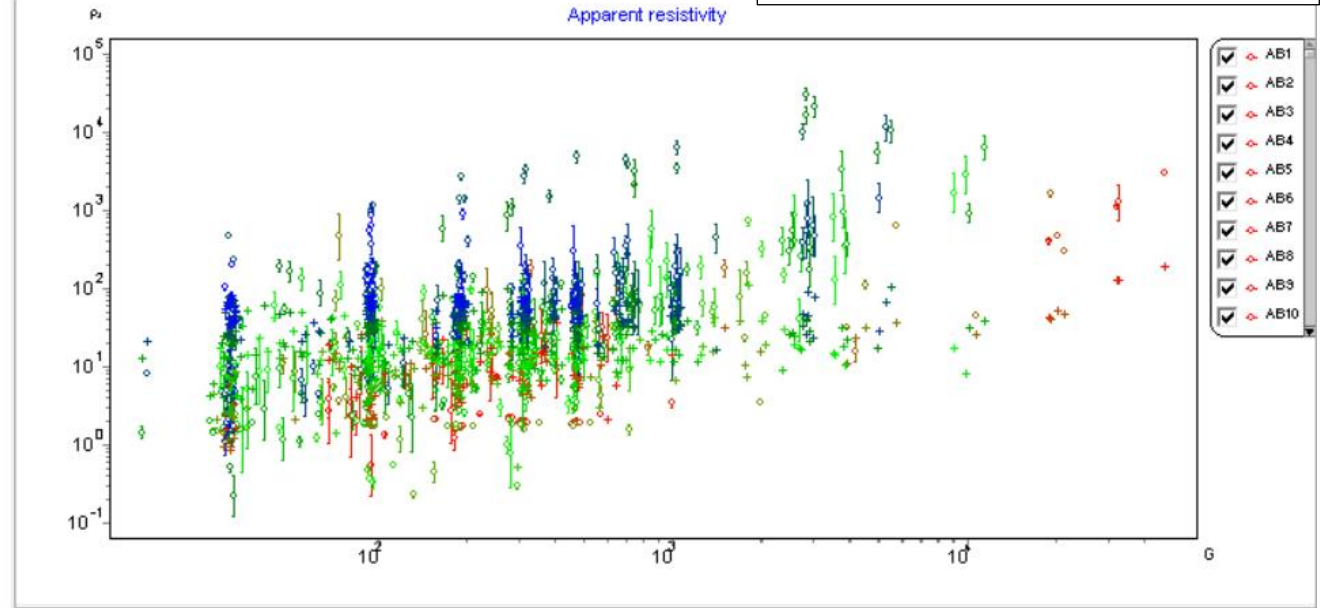
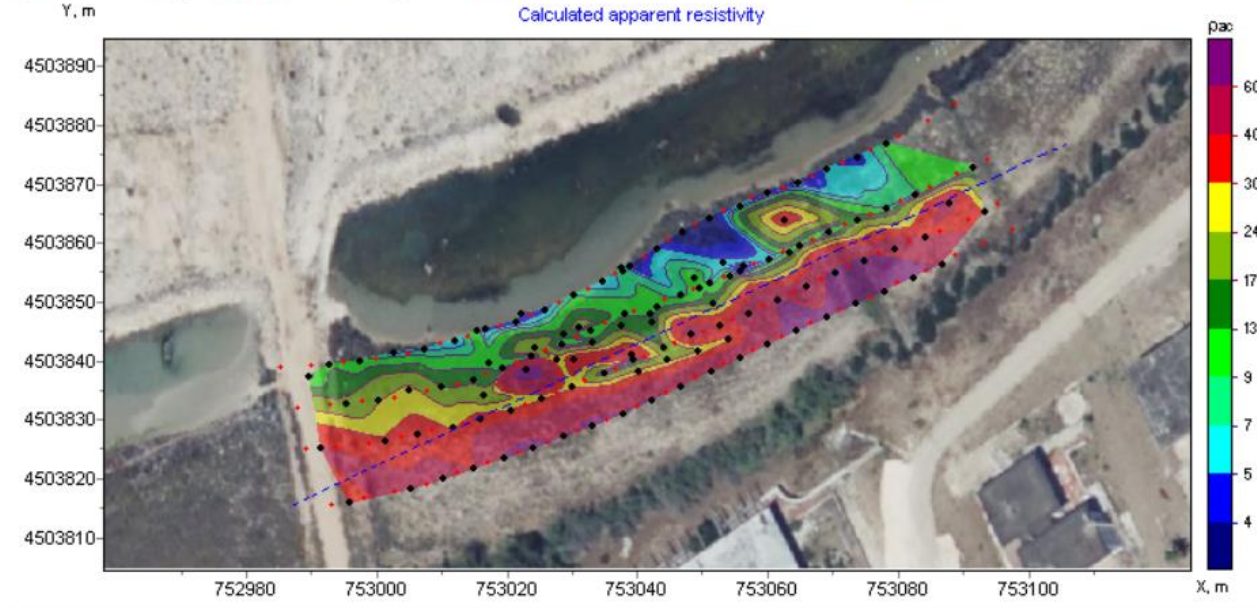
Sistema di riferimento WGS84-zona 33N

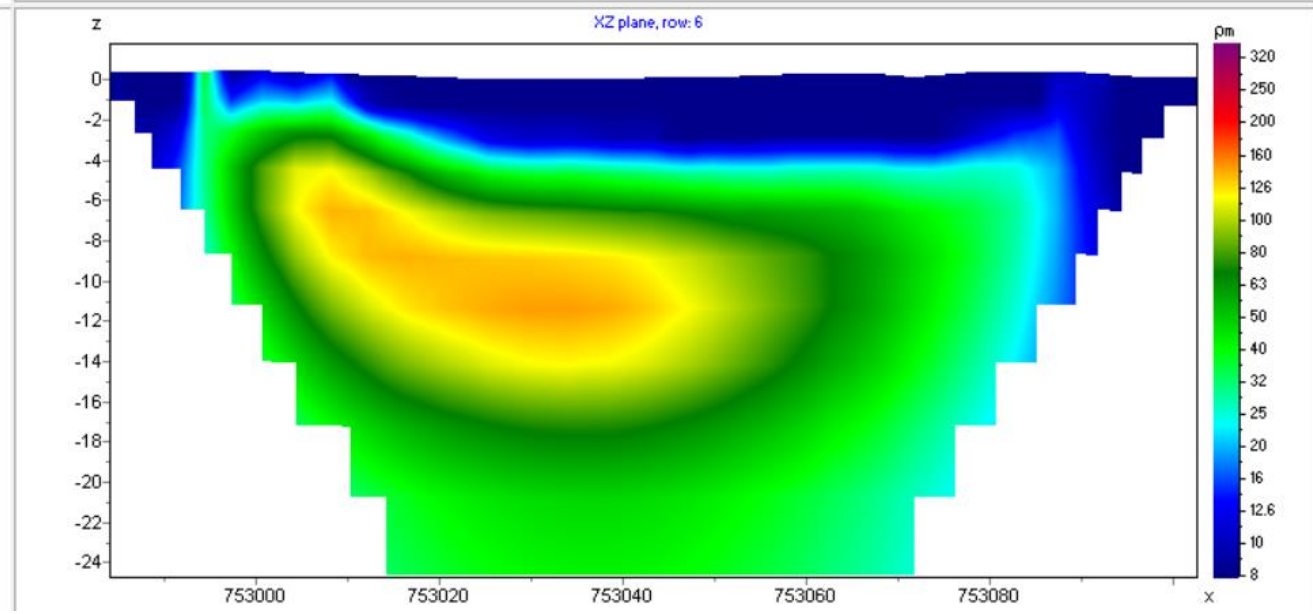
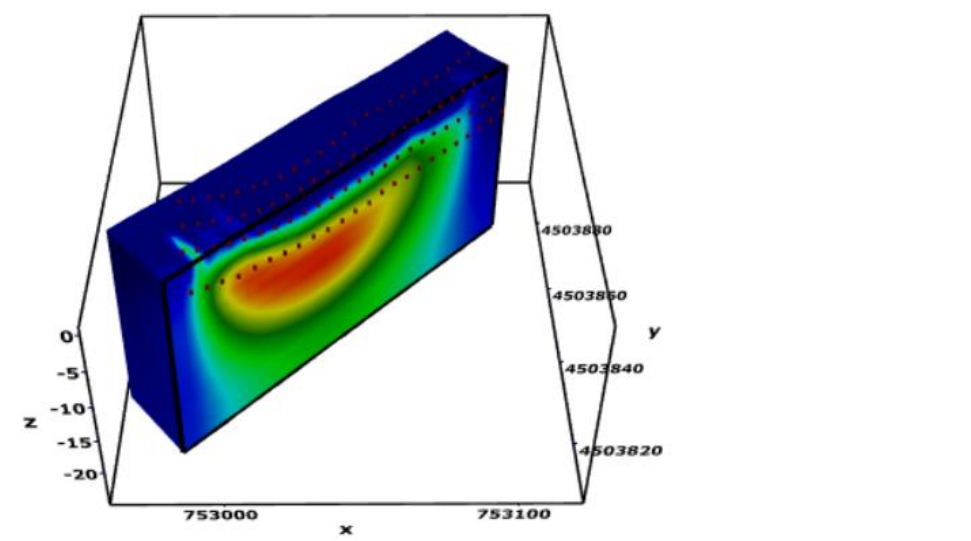
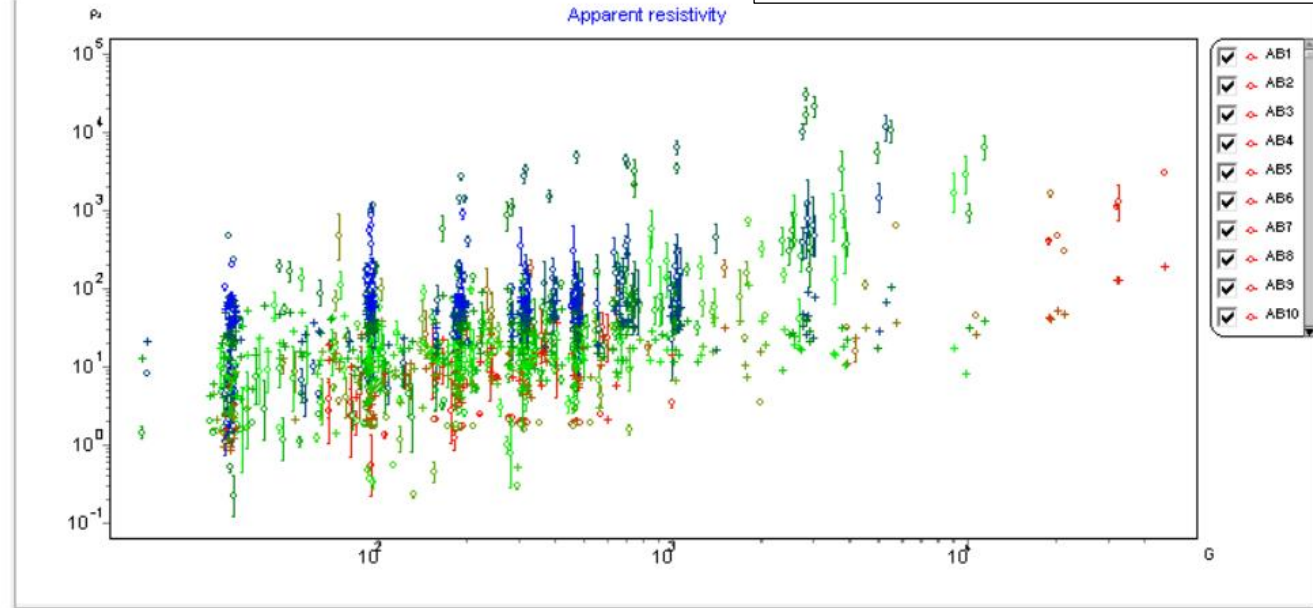
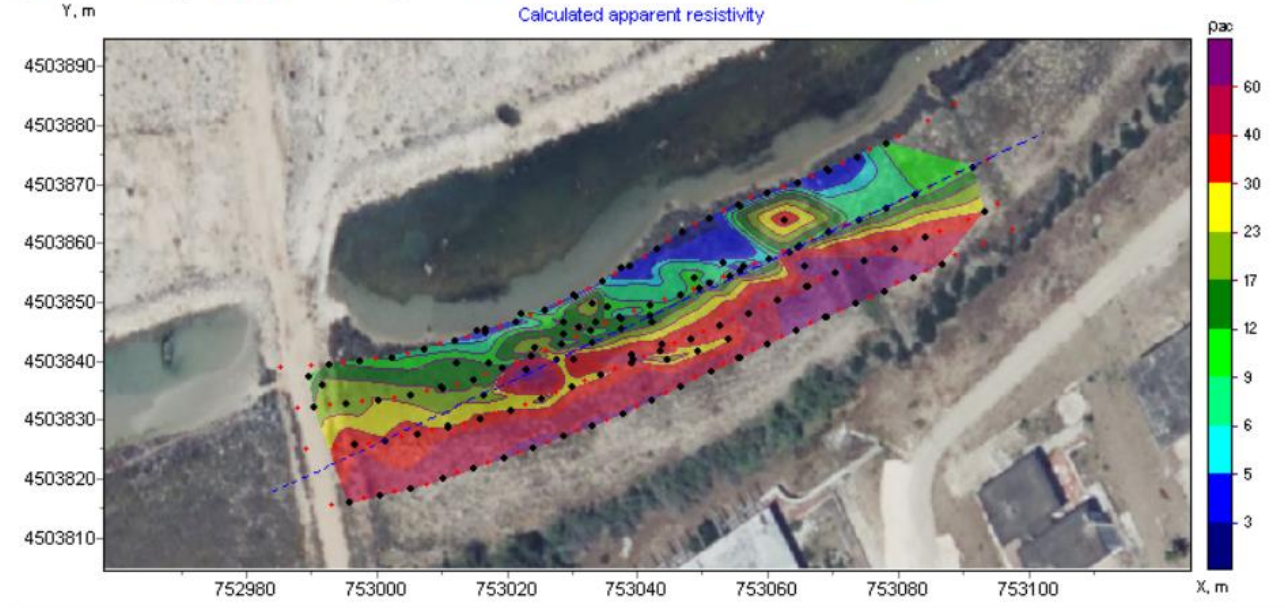


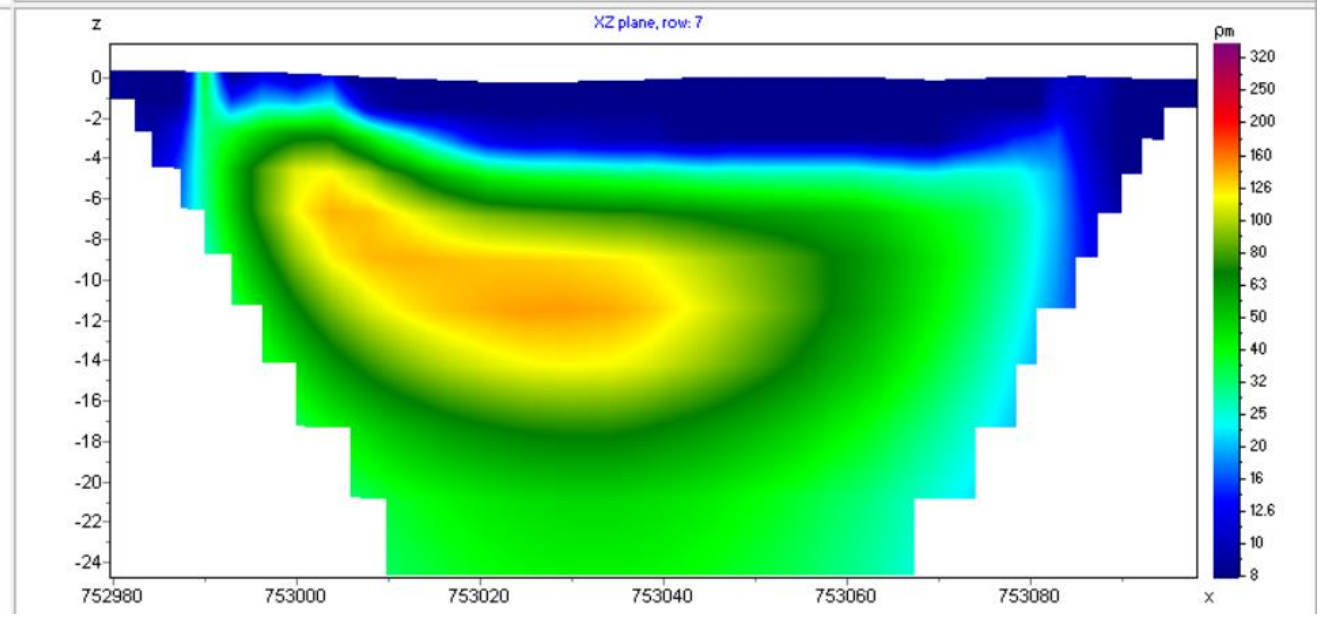
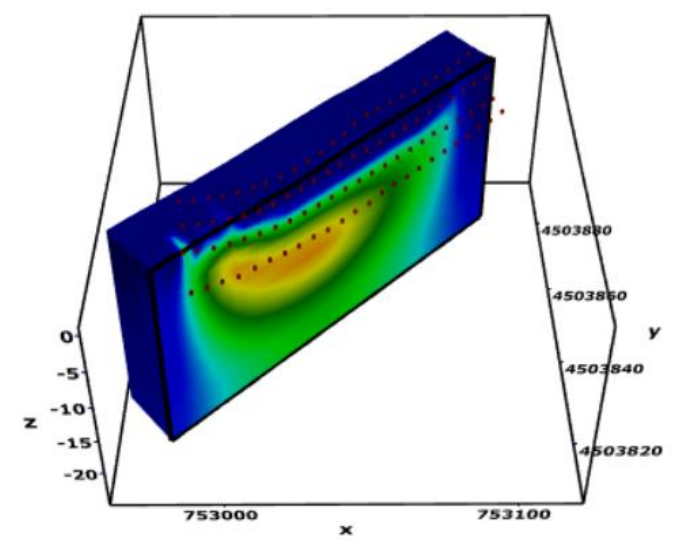
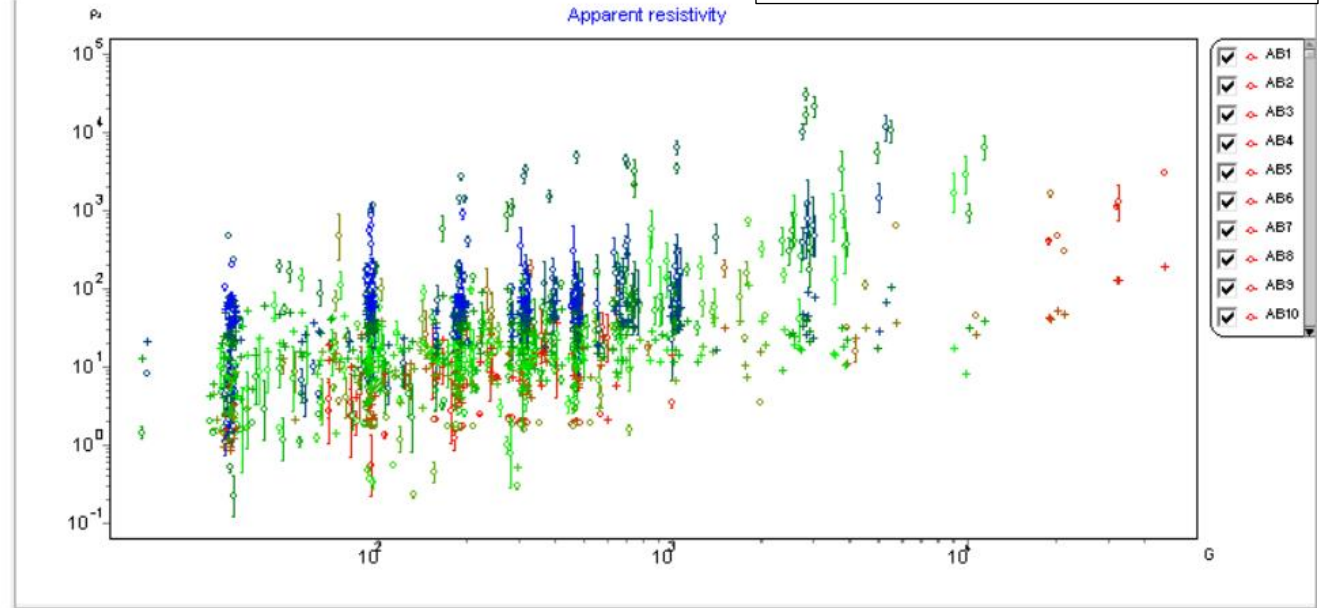
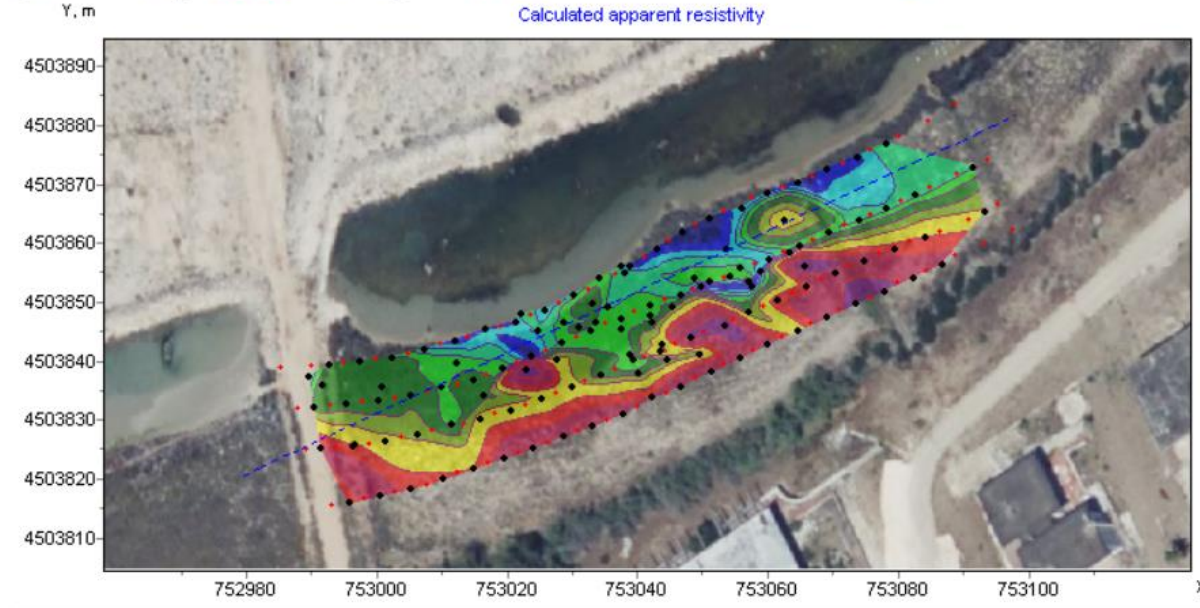


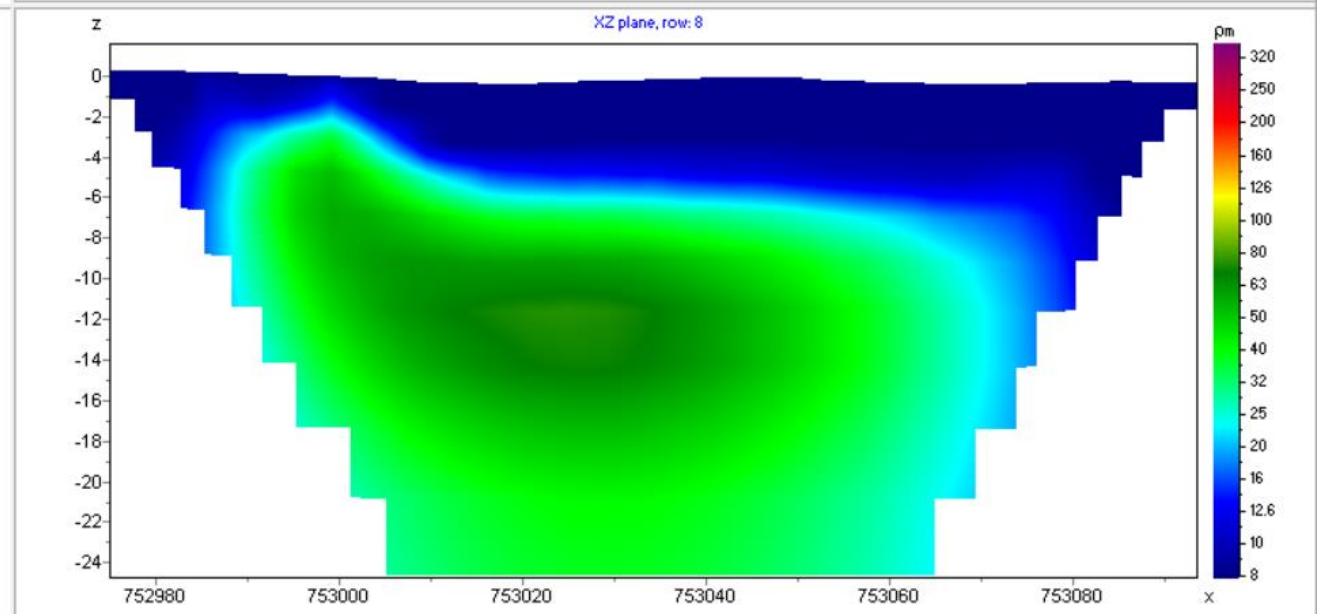
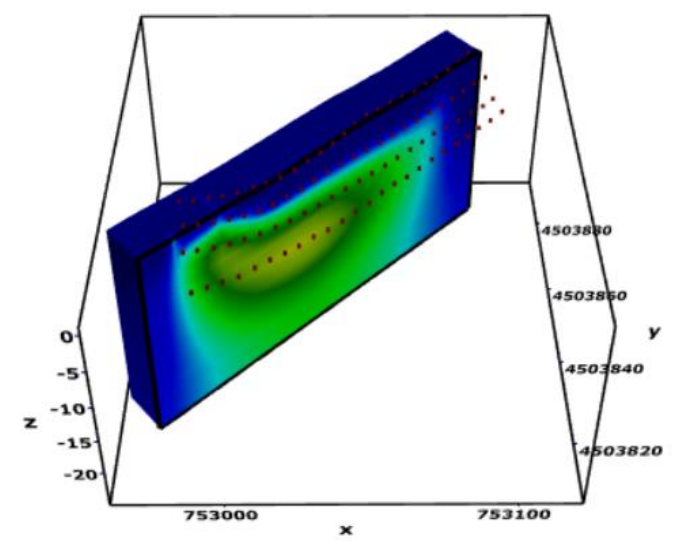
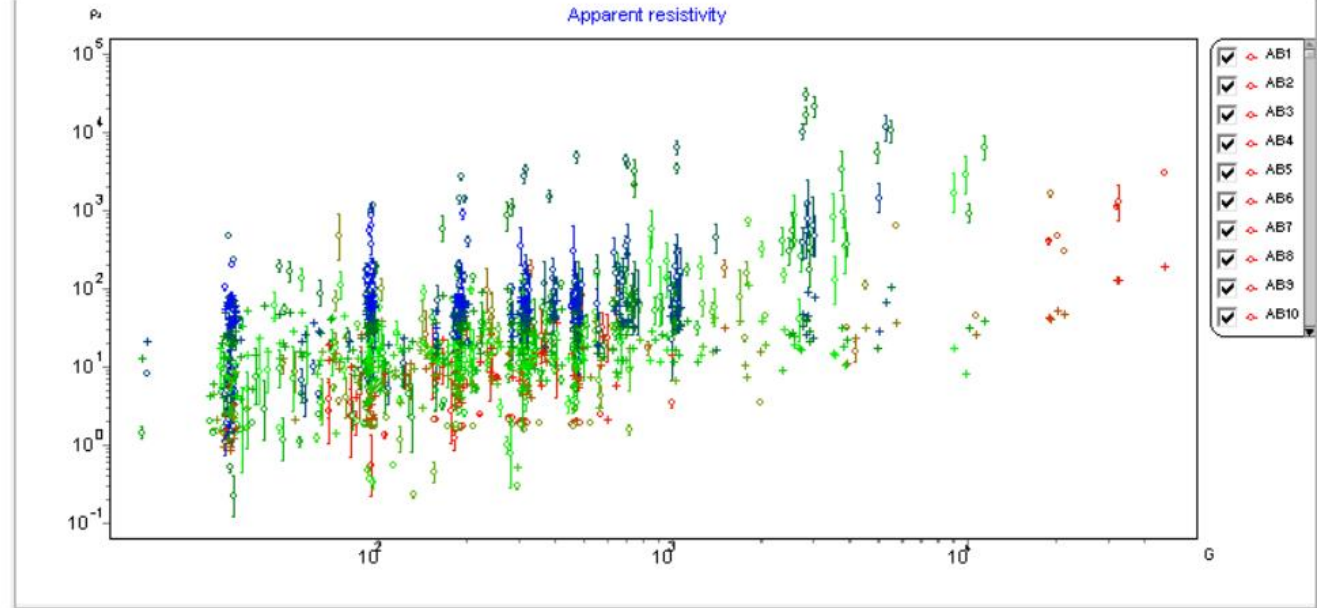
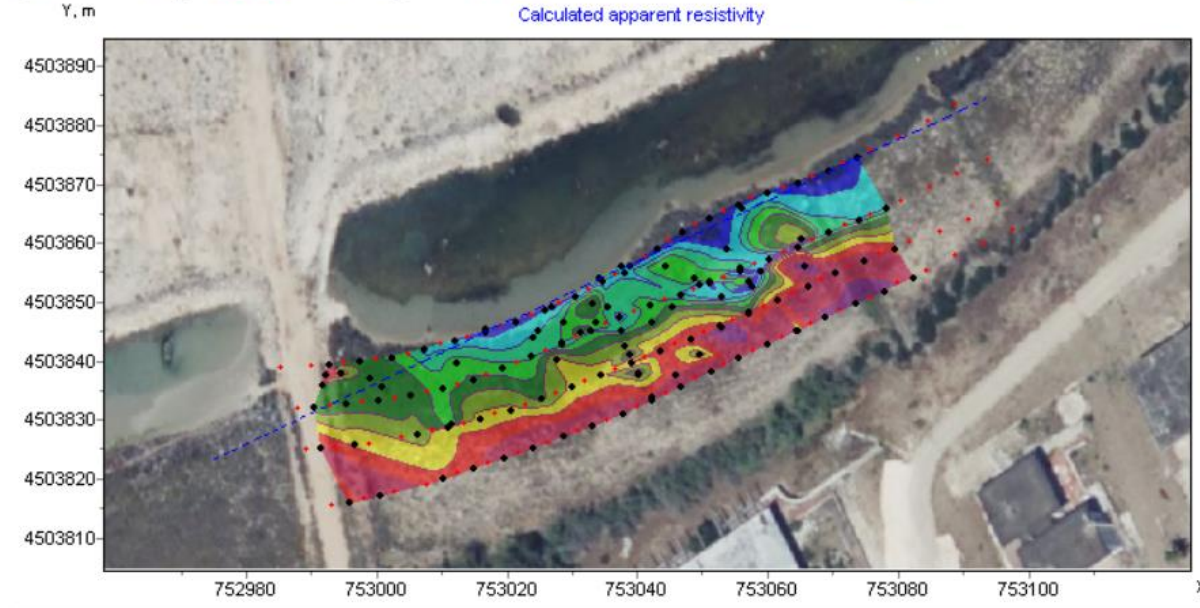








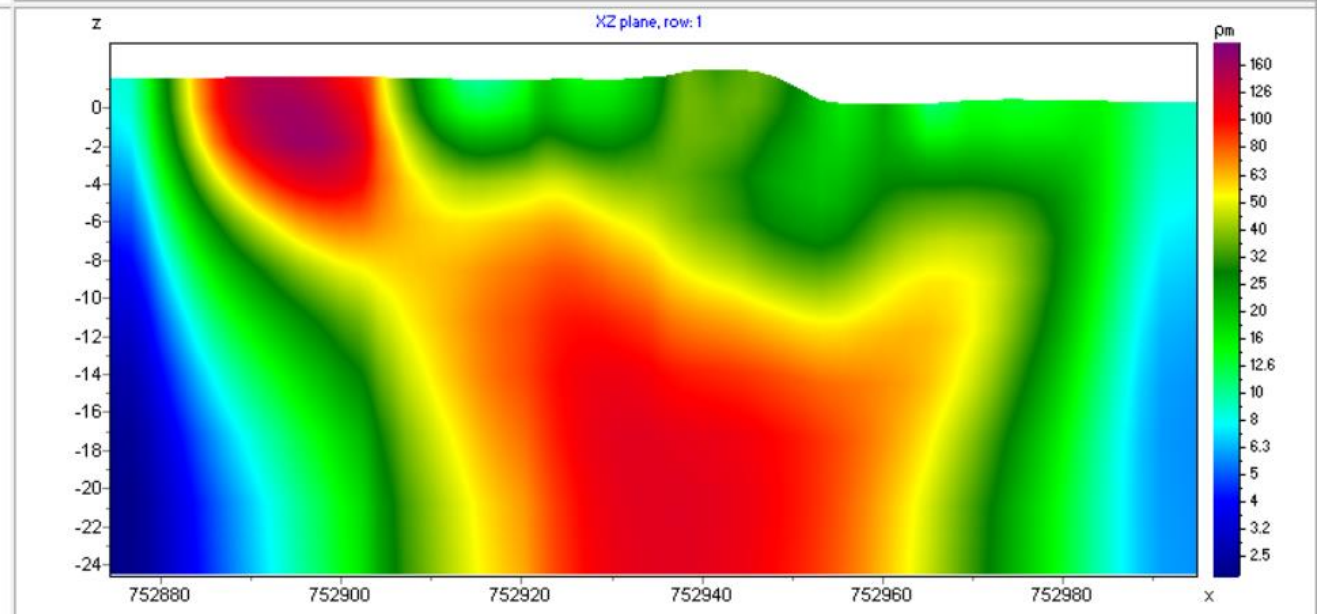
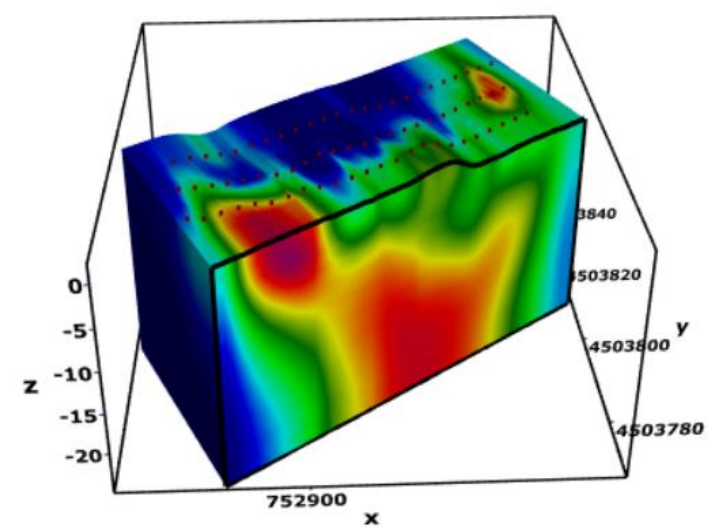
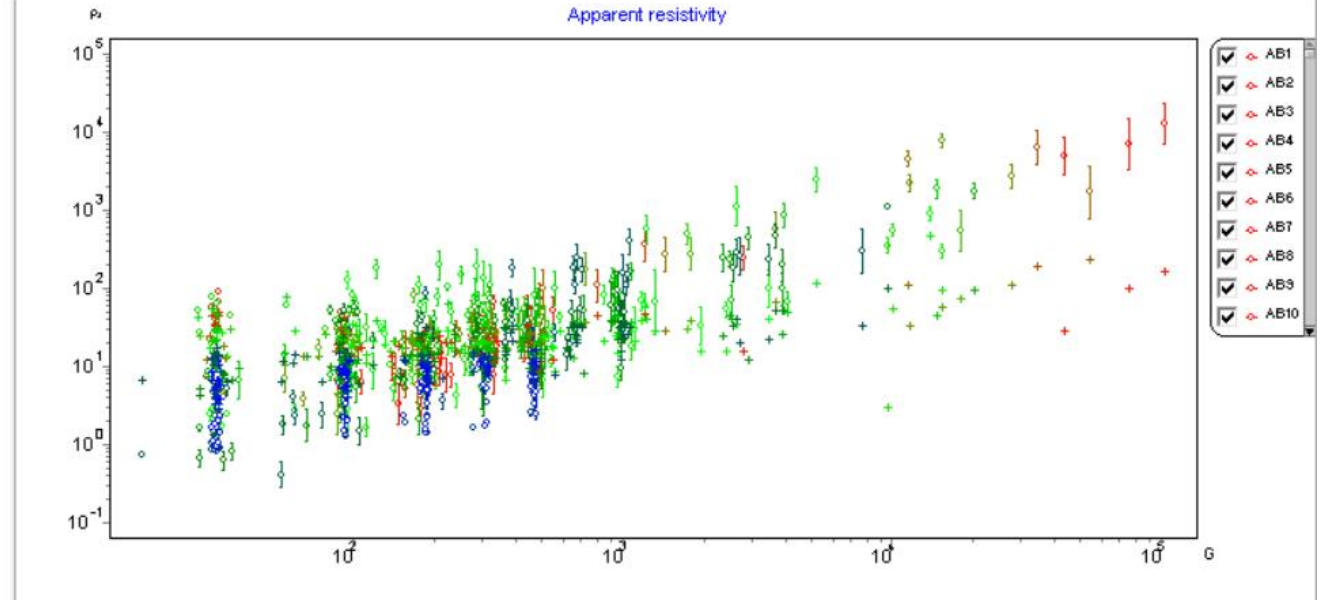
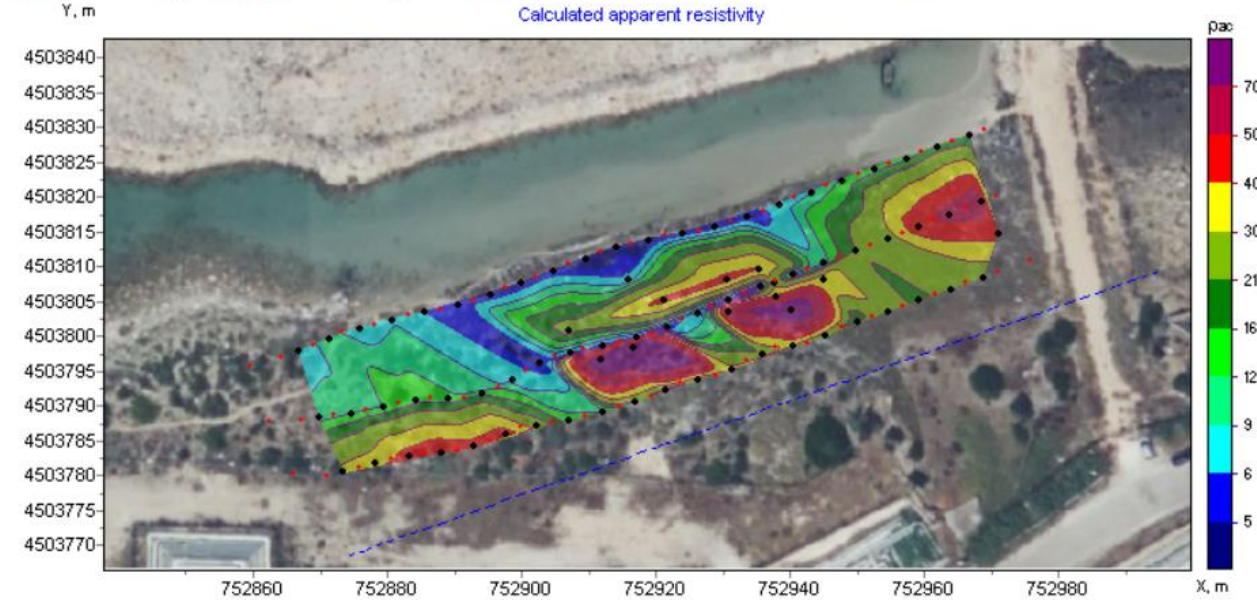


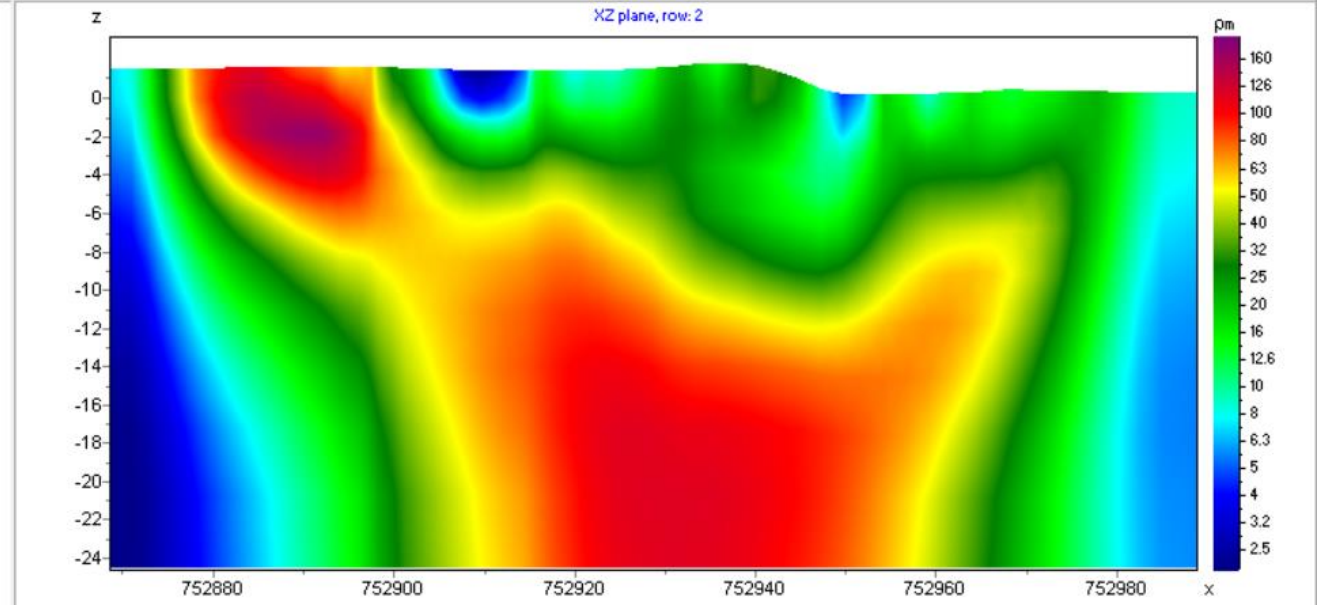
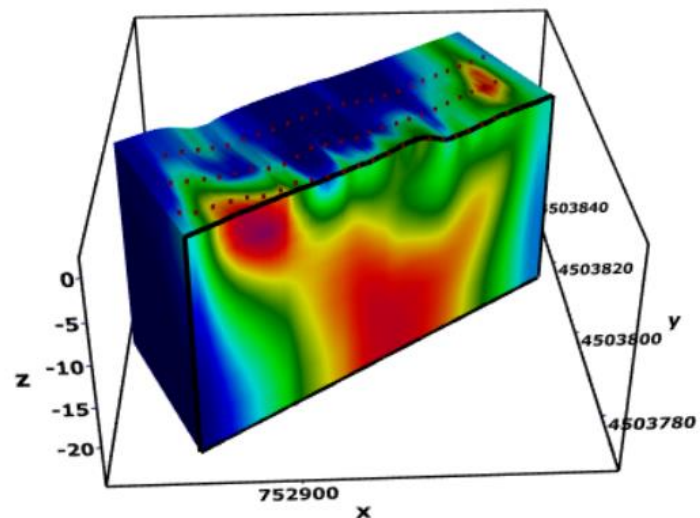
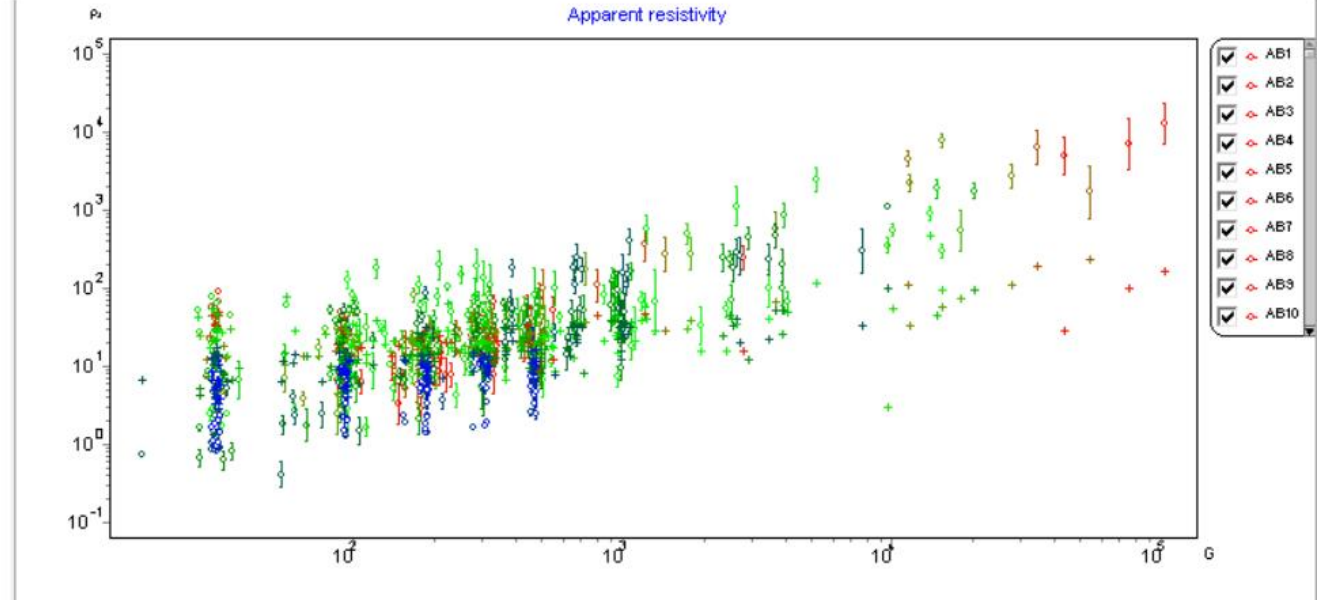
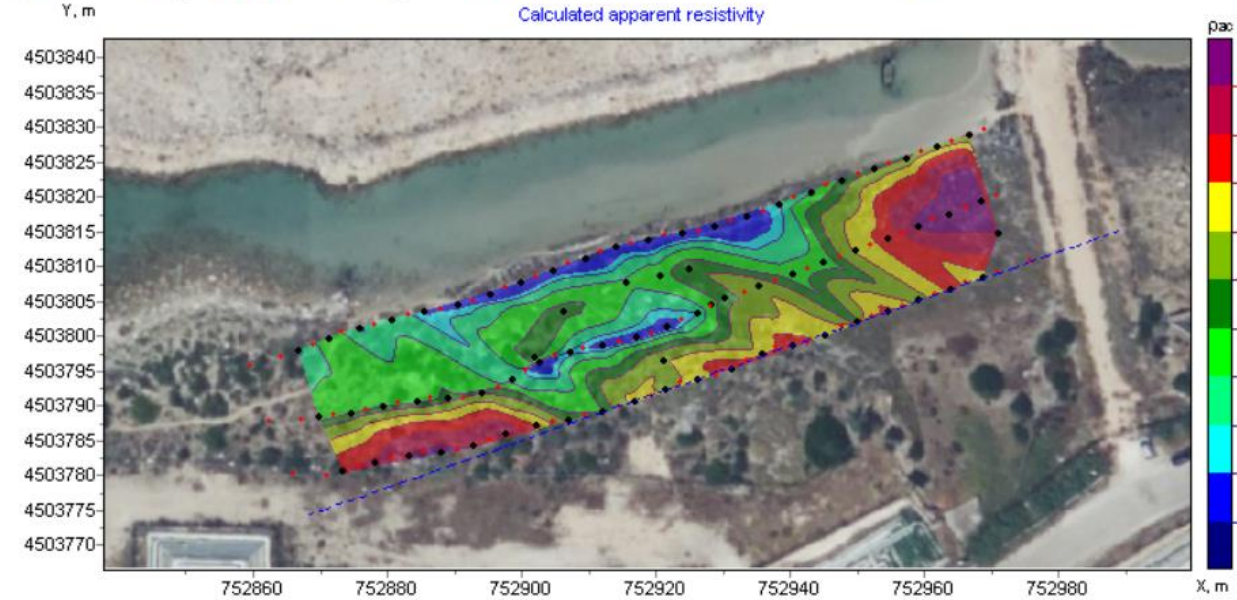


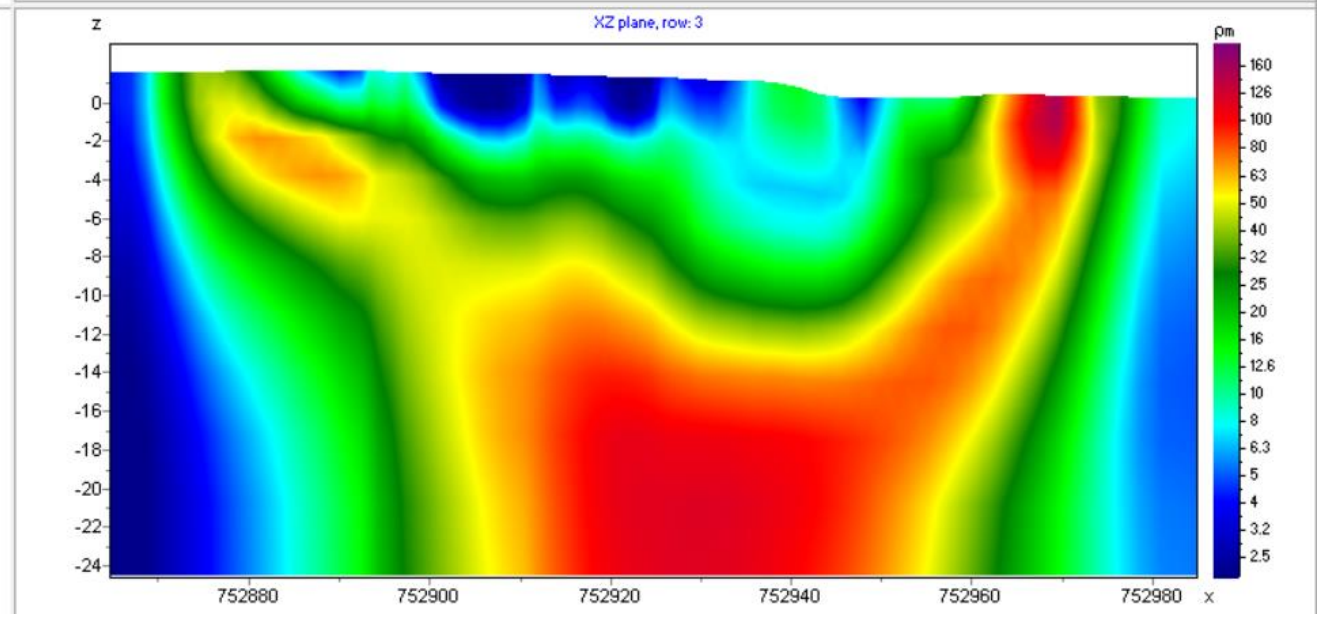
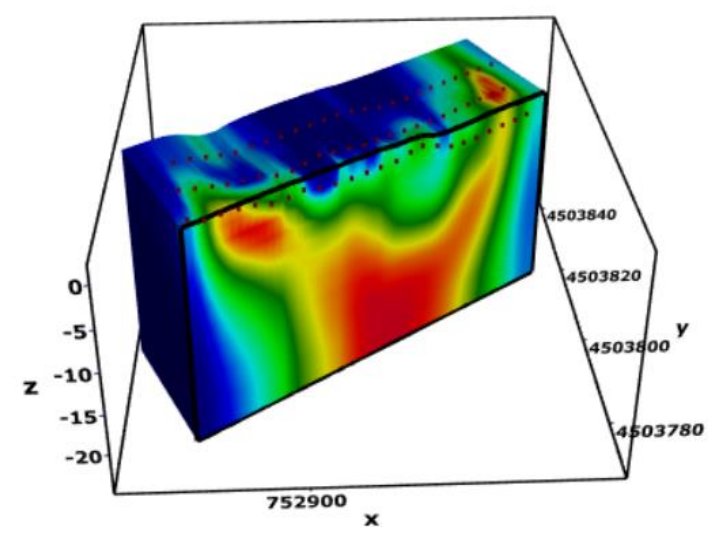
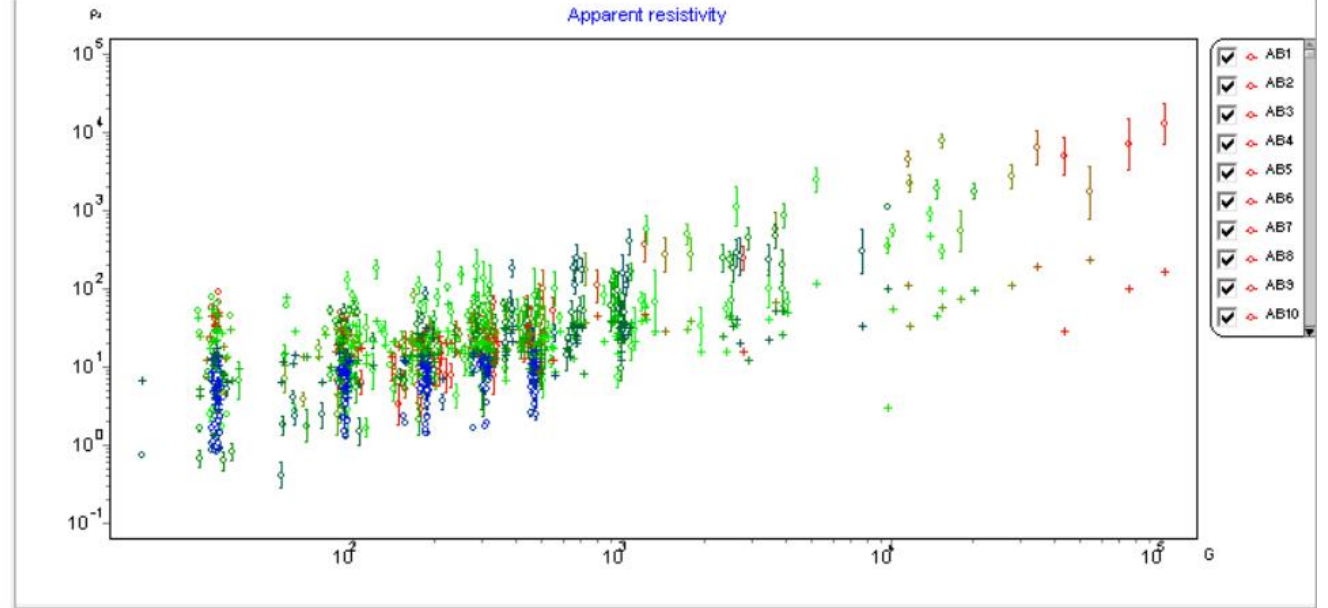
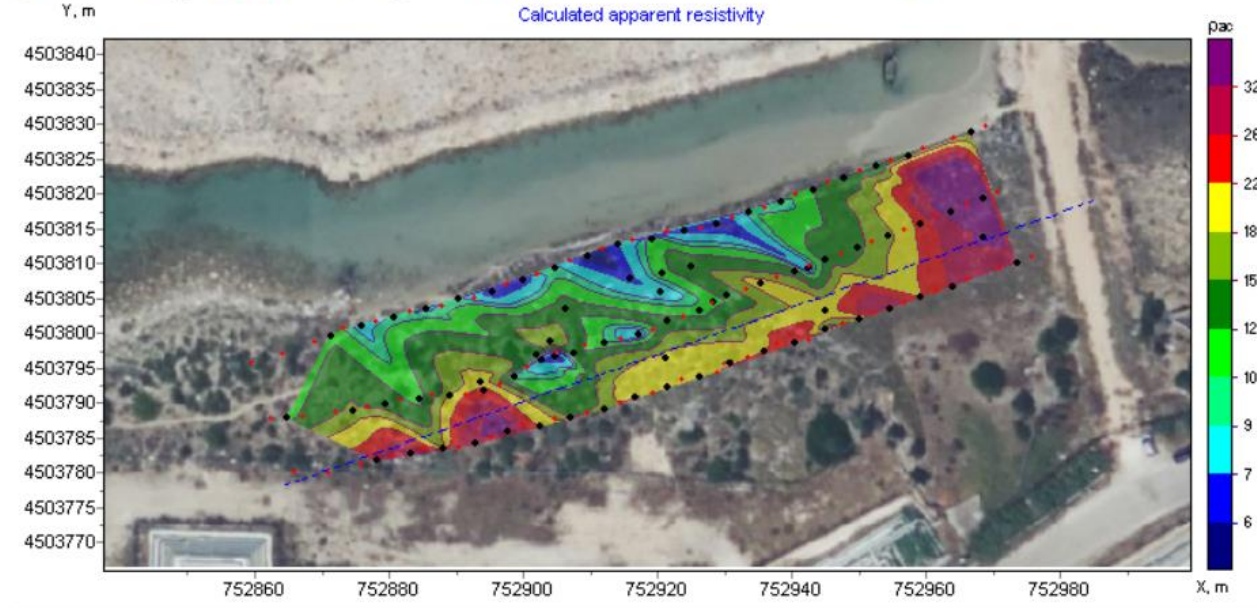


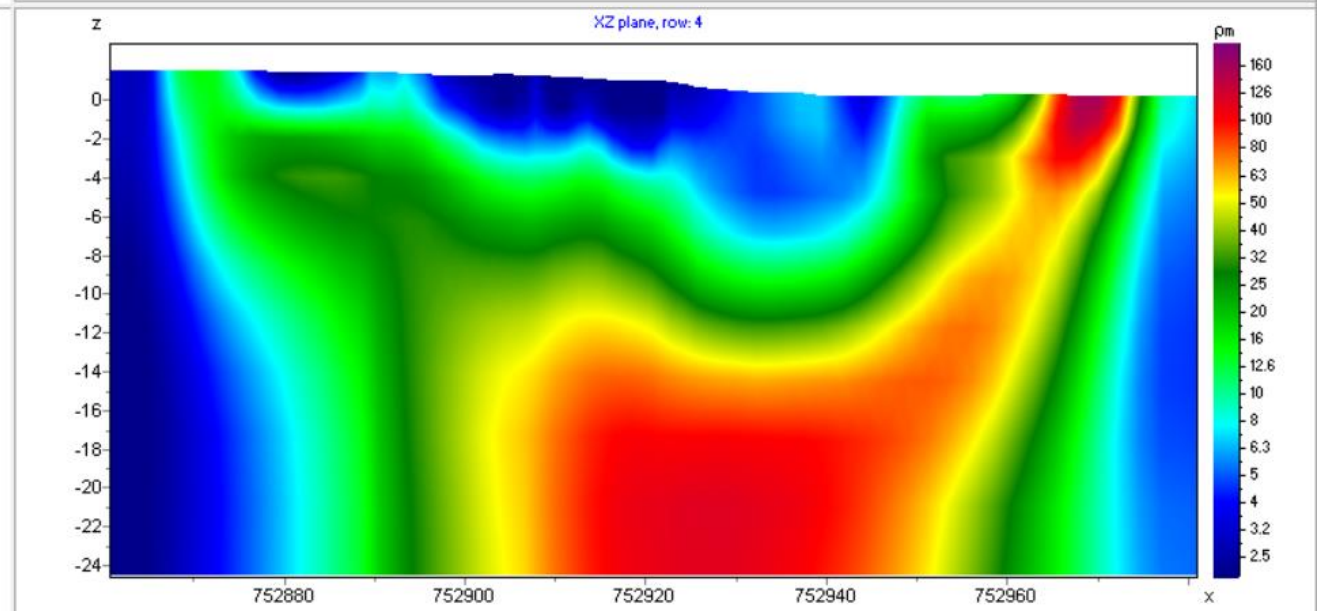
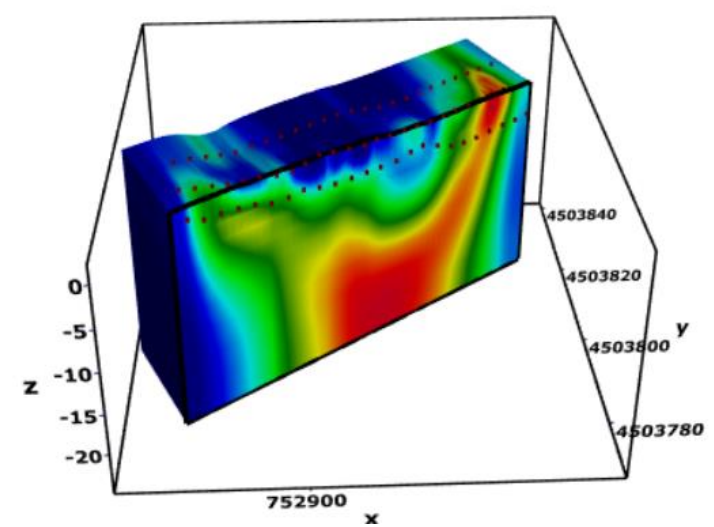
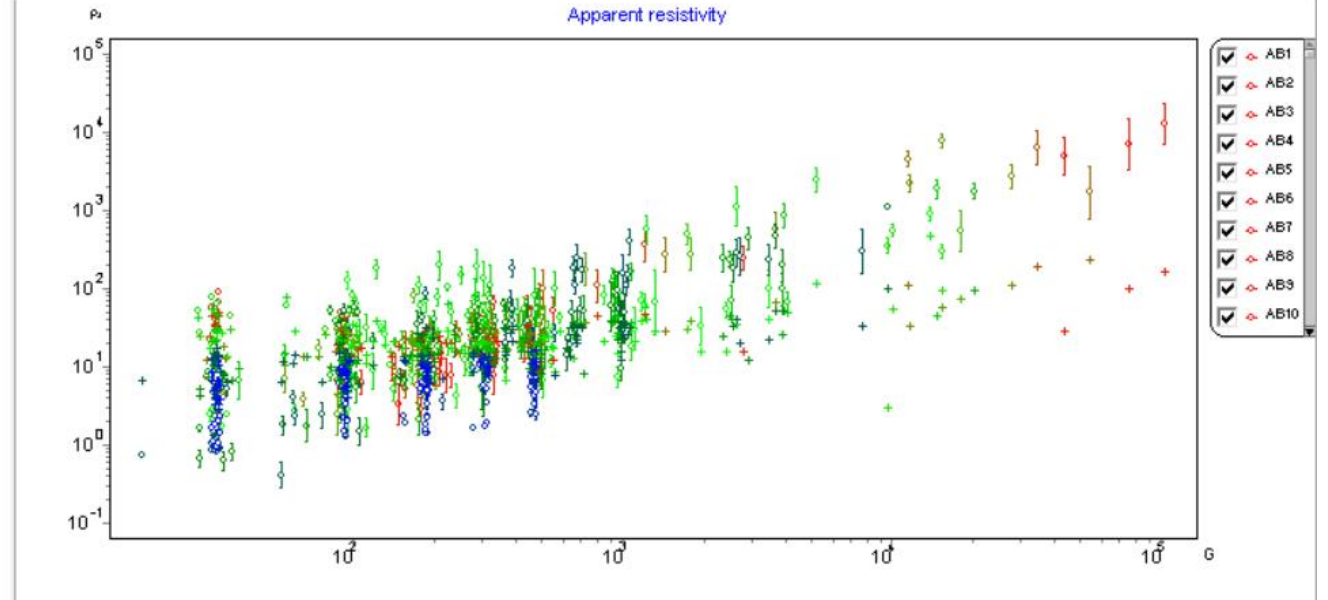
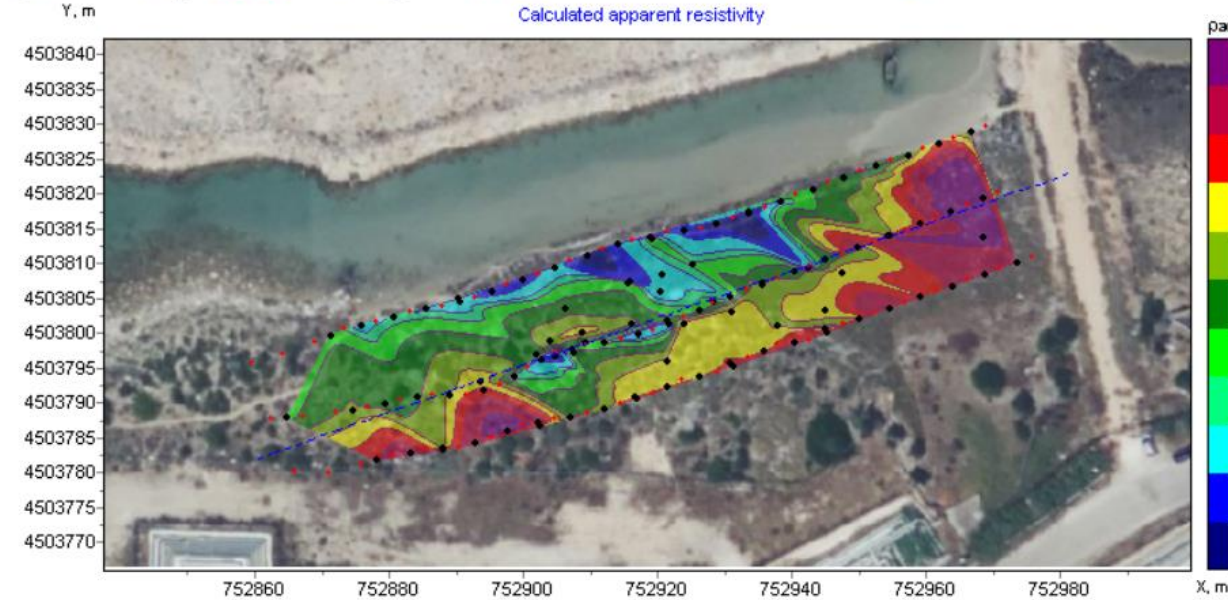
Campo 3 TAV. 17
Ortofoto georiferita/punti di acquisizione
Sistema di riferimento WGS84-zona 33N

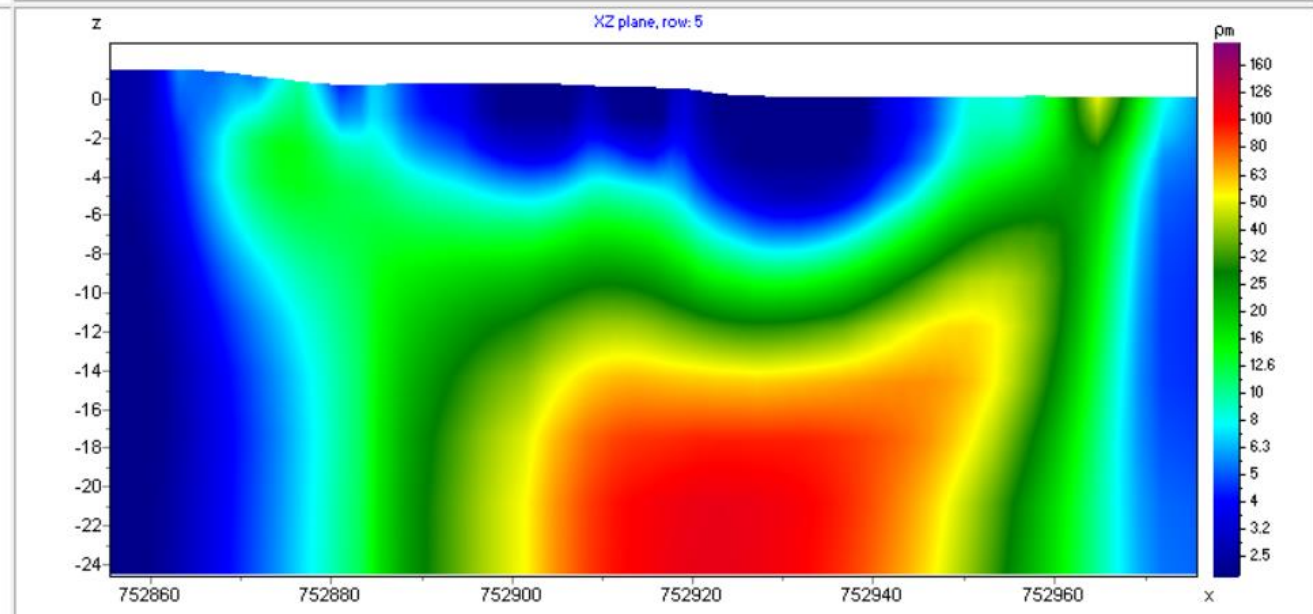
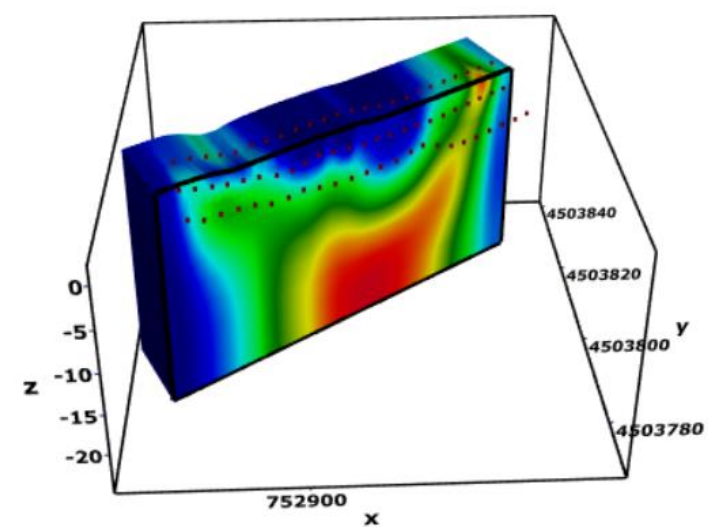
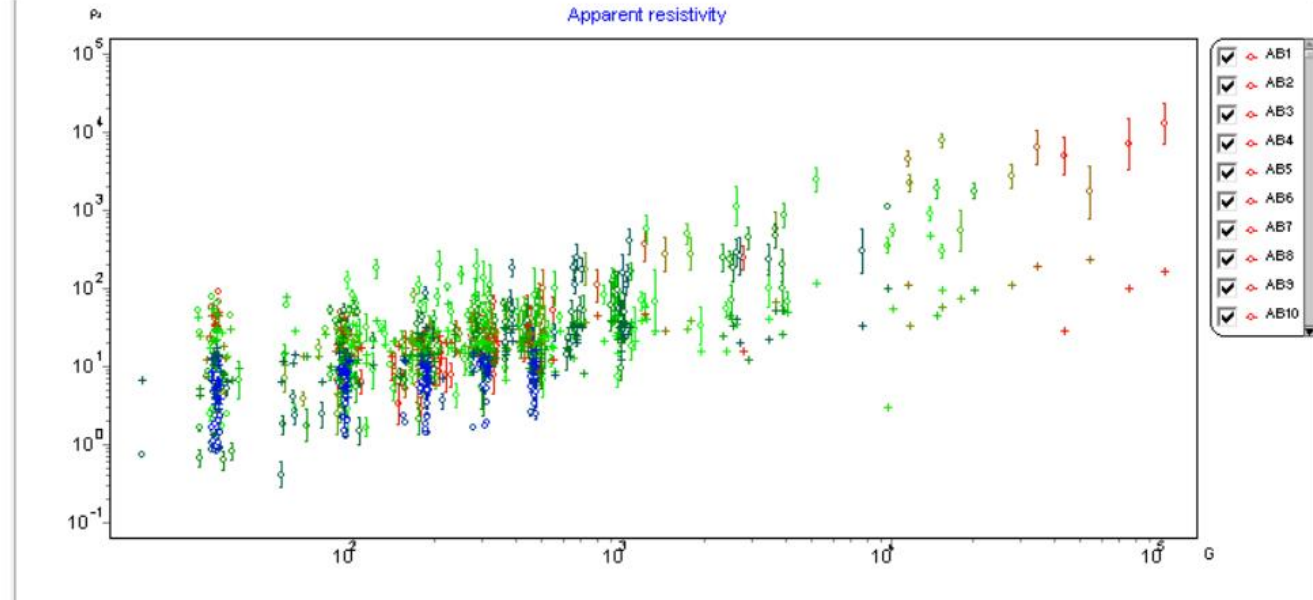
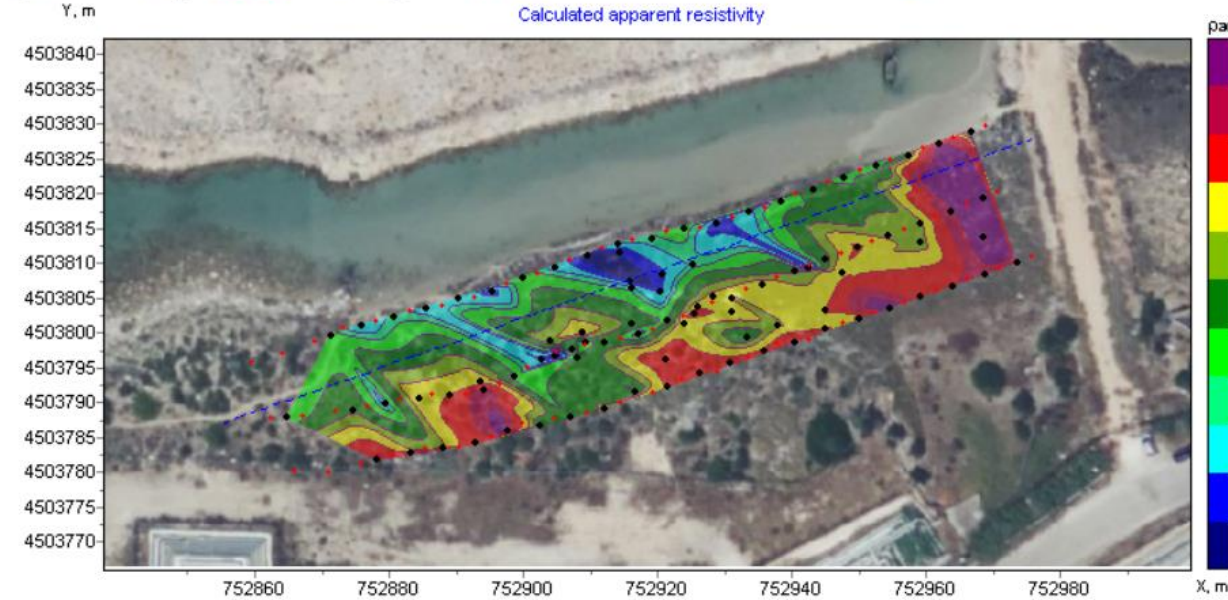
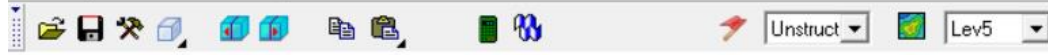


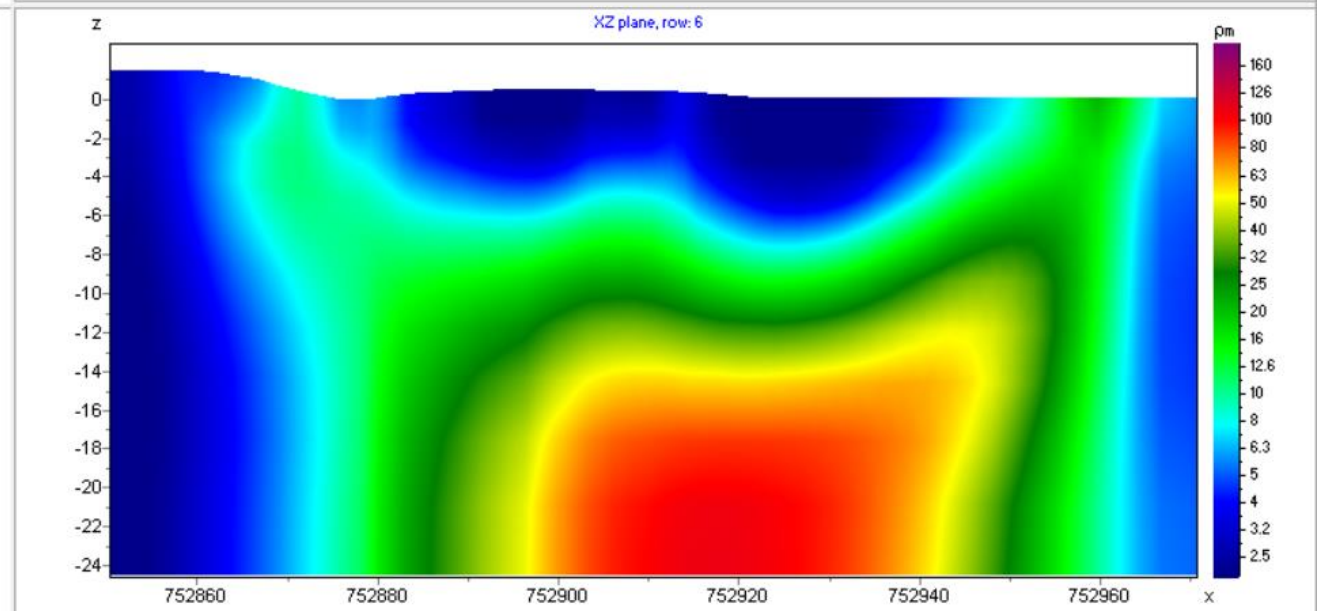
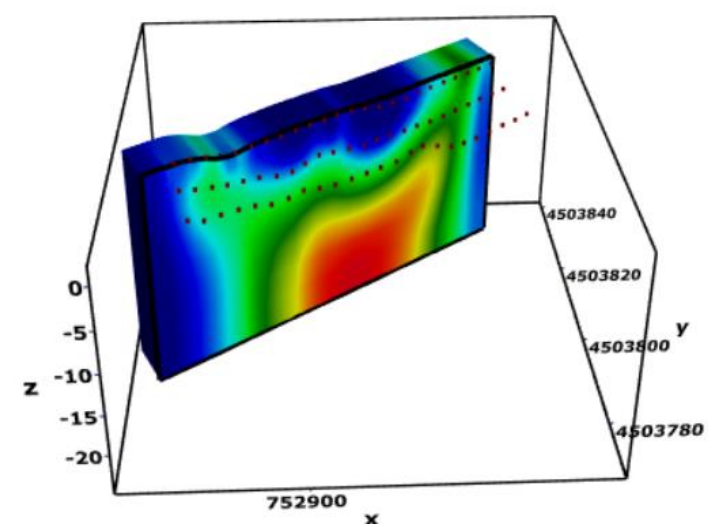
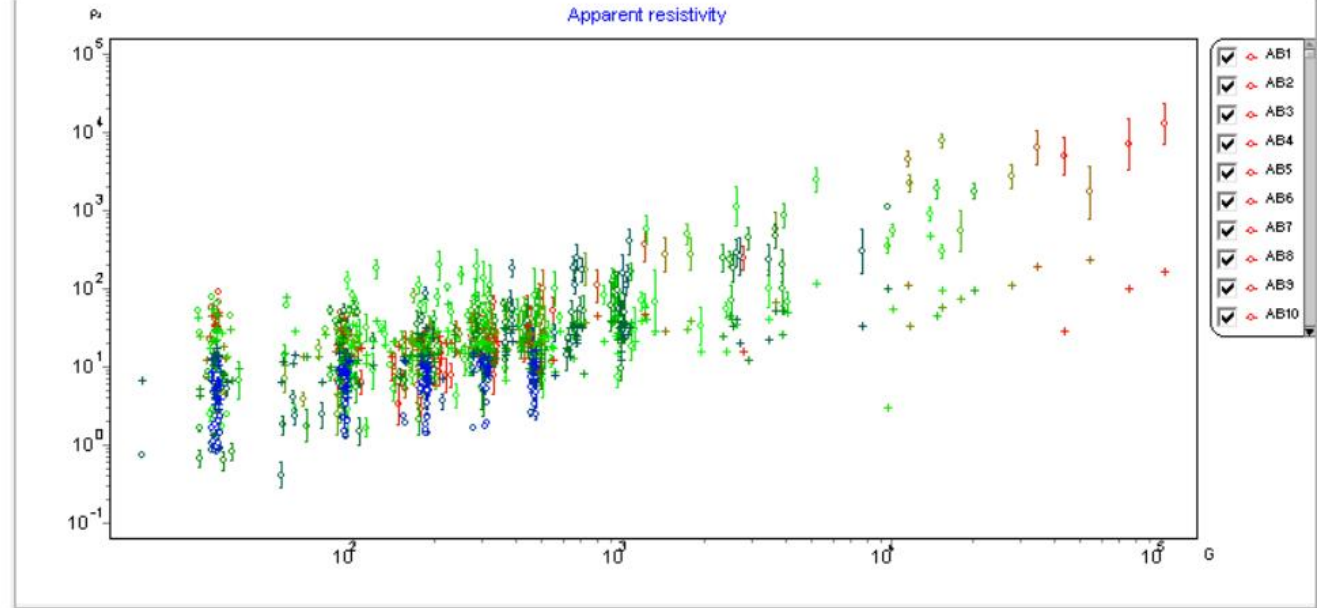
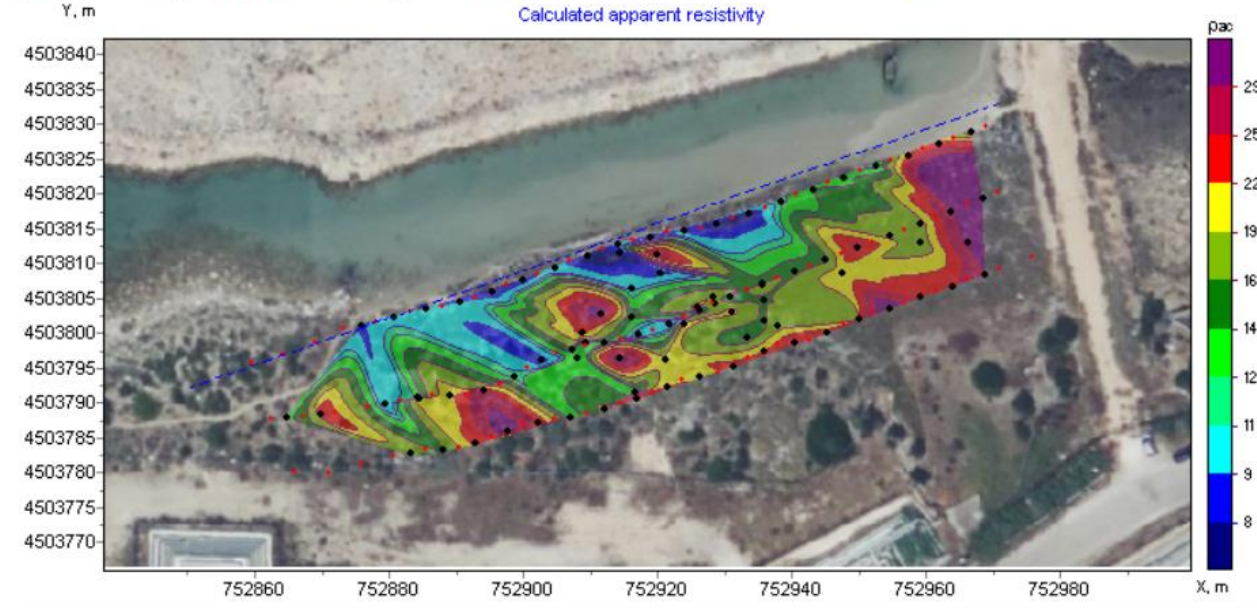














Sezione AB

TAV. 24

Ortofoto georiferita/punti di acquisizione

Sistema di riferimento WGS84-zona 33N



