

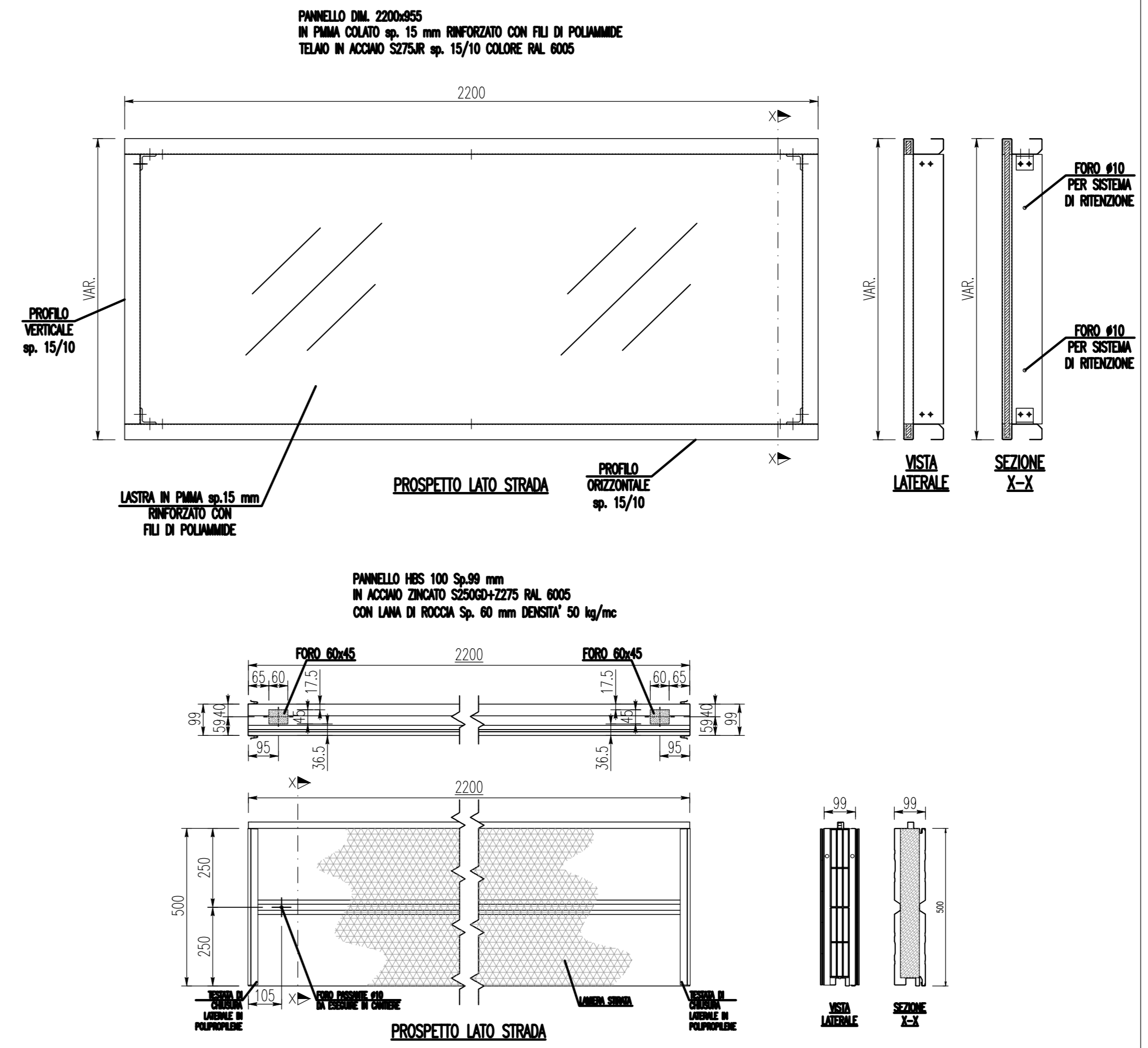
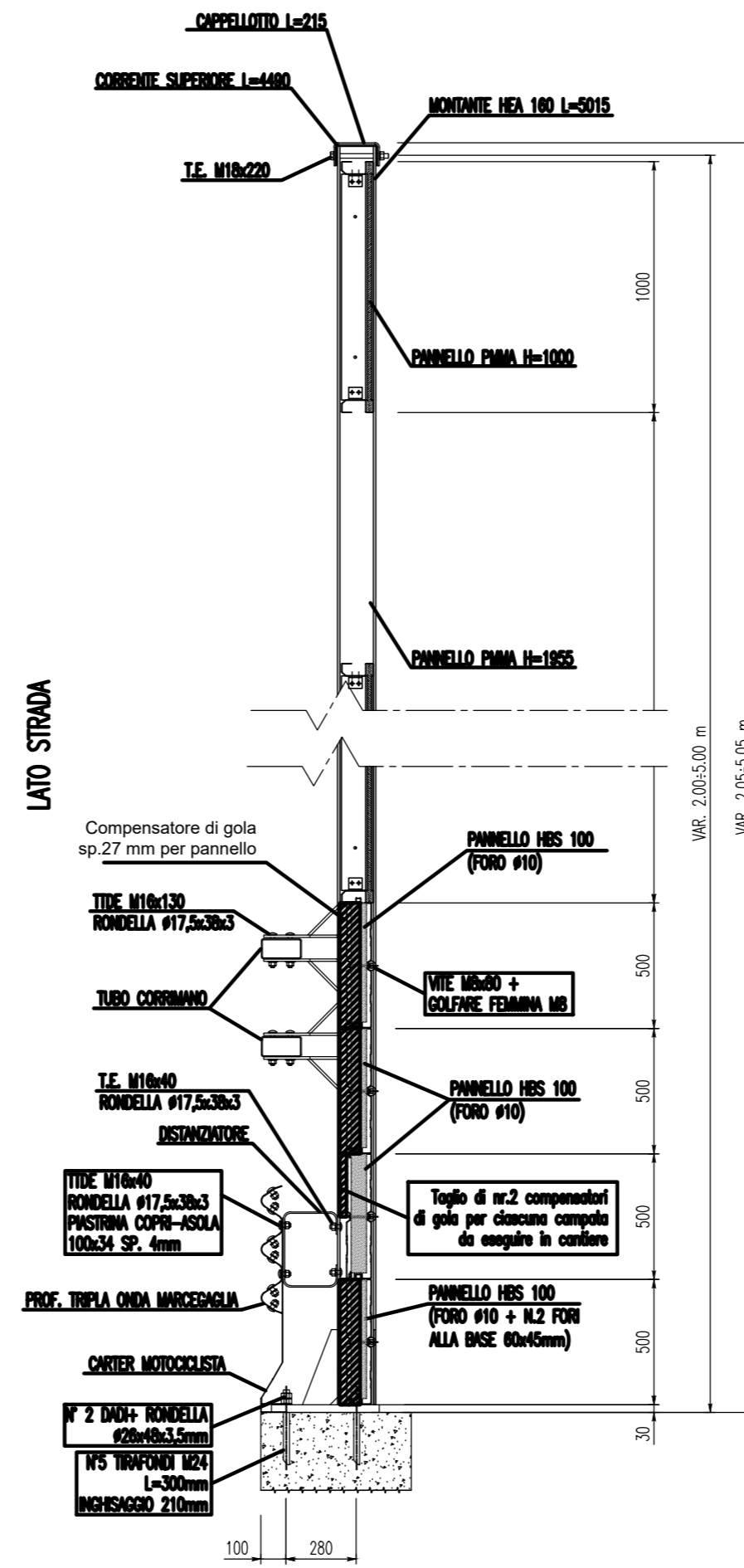
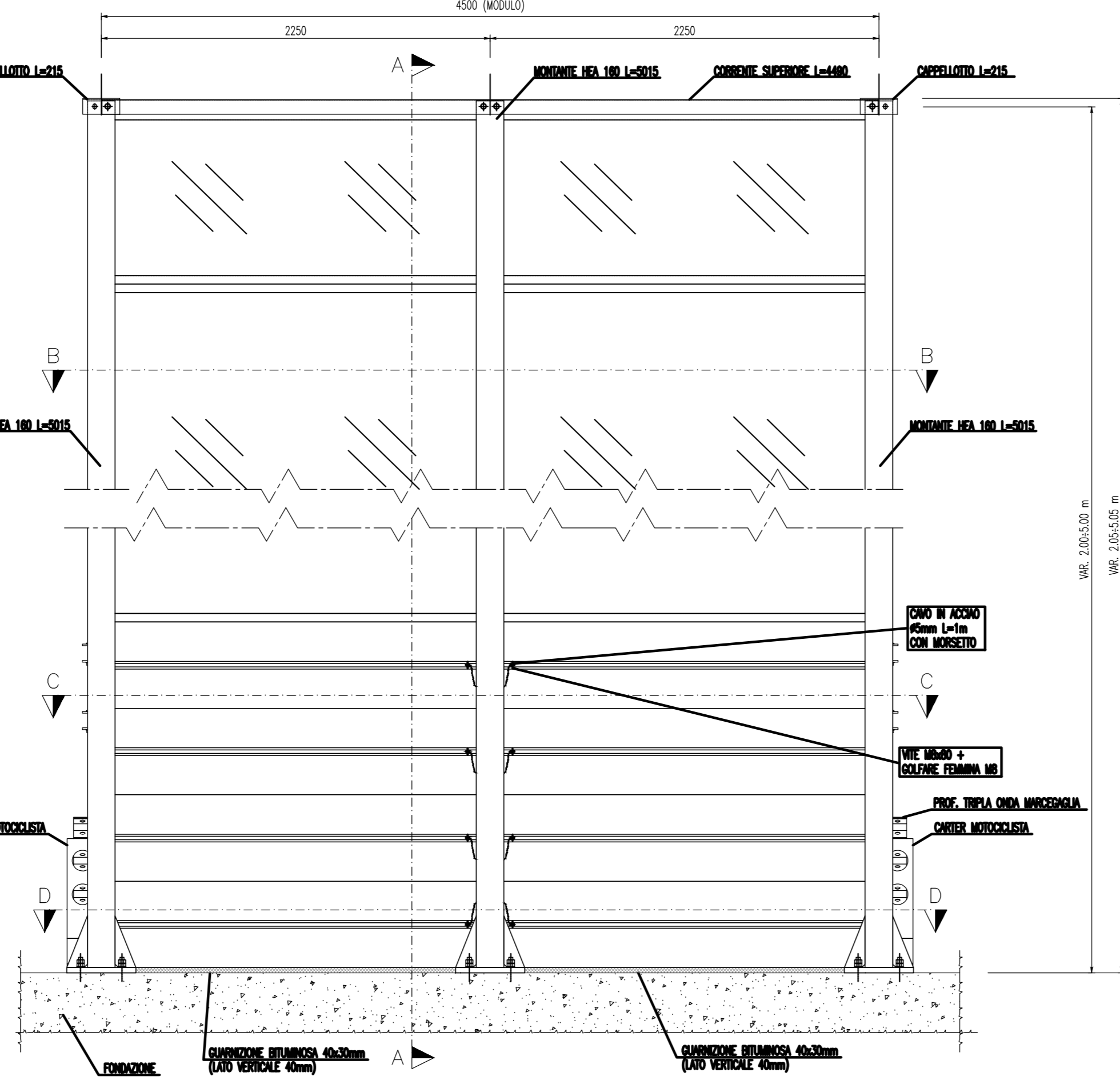
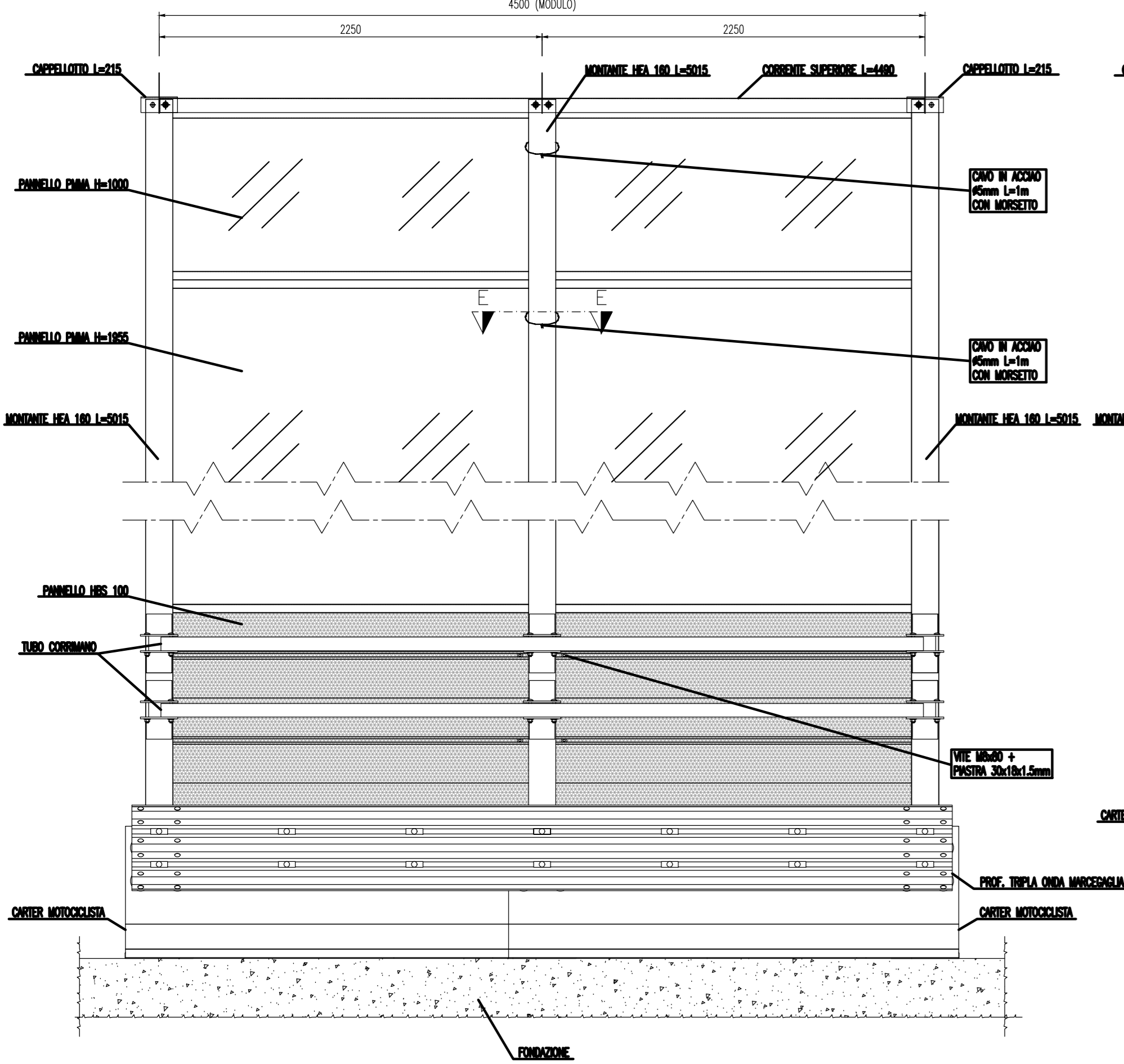
BARRIERA INTEGRATA SICUREZZA E ANTIRUMORE  
CON FINITURA PANNELLO "MISTA-OPACA-TRASPARENTE"  
H=VAR. 2,00:5,00 m

DETTAGLIO PANNELLI

PROSPETTO LATO STRADA

PROSPETTO LATO RICEVITORI

SEZIONE A-A



SEZIONE E-E

LATO RICEVITORI

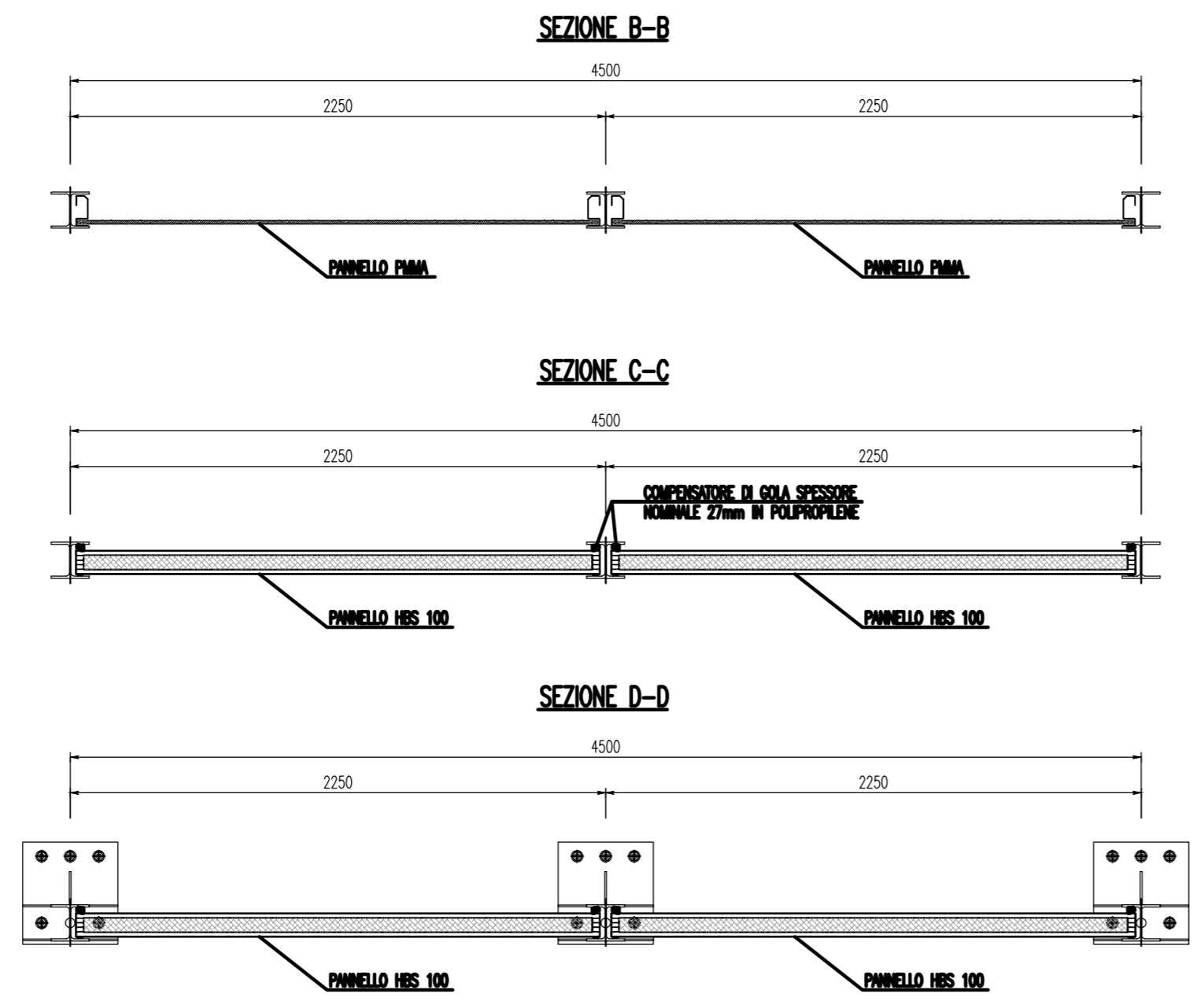
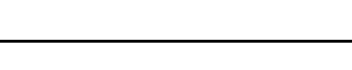
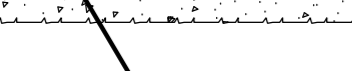
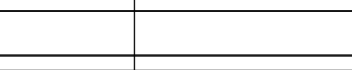
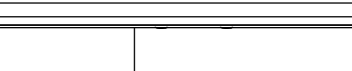
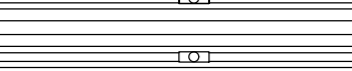
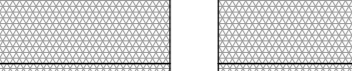
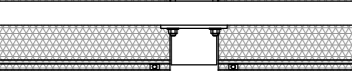
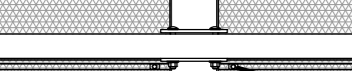
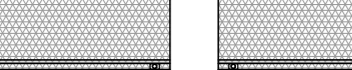
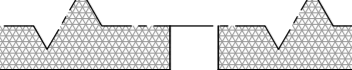
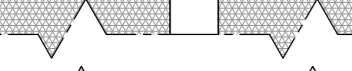
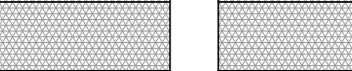
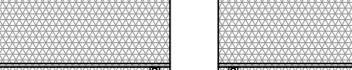
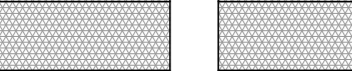
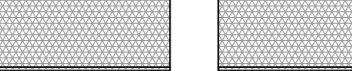
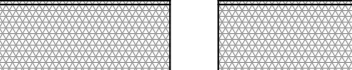
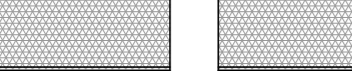
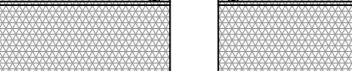
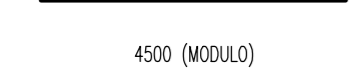
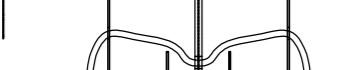
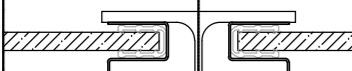


TABELLA BARRIERE ACUSTICHE					
Barriera antirumore	Lunghezza	Altezza	Sp. Inizio	Sp. Fine	Tipologia
codifica	(m)	(m)	(m)	(m)	
1	100	4	0-400	0-400	integrata
2	100	3	1-270	1-300	integrata
3	80	4	1-400	1-400	integrata
4	90	3	1-400	1-400	integrata
5	80	4	1-570	1-400	integrata
6	170	4	1-600	1-400	integrata
8	170	5	1-700	1-900	integrata
9	120	5	2-100	2-200	integrata
10	120	5	2-100	2-225	integrata
12	160	3	2-600	2-770	integrata
13	150	3	3-500	3-670	integrata
14	150	4	4-000	4-170	integrata
15	170	5	4-000	4-170	integrata
16	80	3	4-200	4-300	integrata
17	170	3	5-700	5-900	integrata
18	150	5	5-700	5-925	integrata
19	90	5	5-900	6-000	integrata
20	171	3	6-200	6-400	integrata
21	100	4	7-000	7-400	integrata

IMMAGINE BARRIERA INTEGRATA CON FINITURA MISTA



BARRIERA INTEGRATA SICUREZZA E ANTIRUMORE  
CON FINITURA PANNELLO "OPACA"  
H=VAR. 2,00:5,00 m

DETTAGLIO PANNELLI

PROSPETTO LATO STRADA

PROSPETTO LATO RICEVITORI

SEZIONE A-A

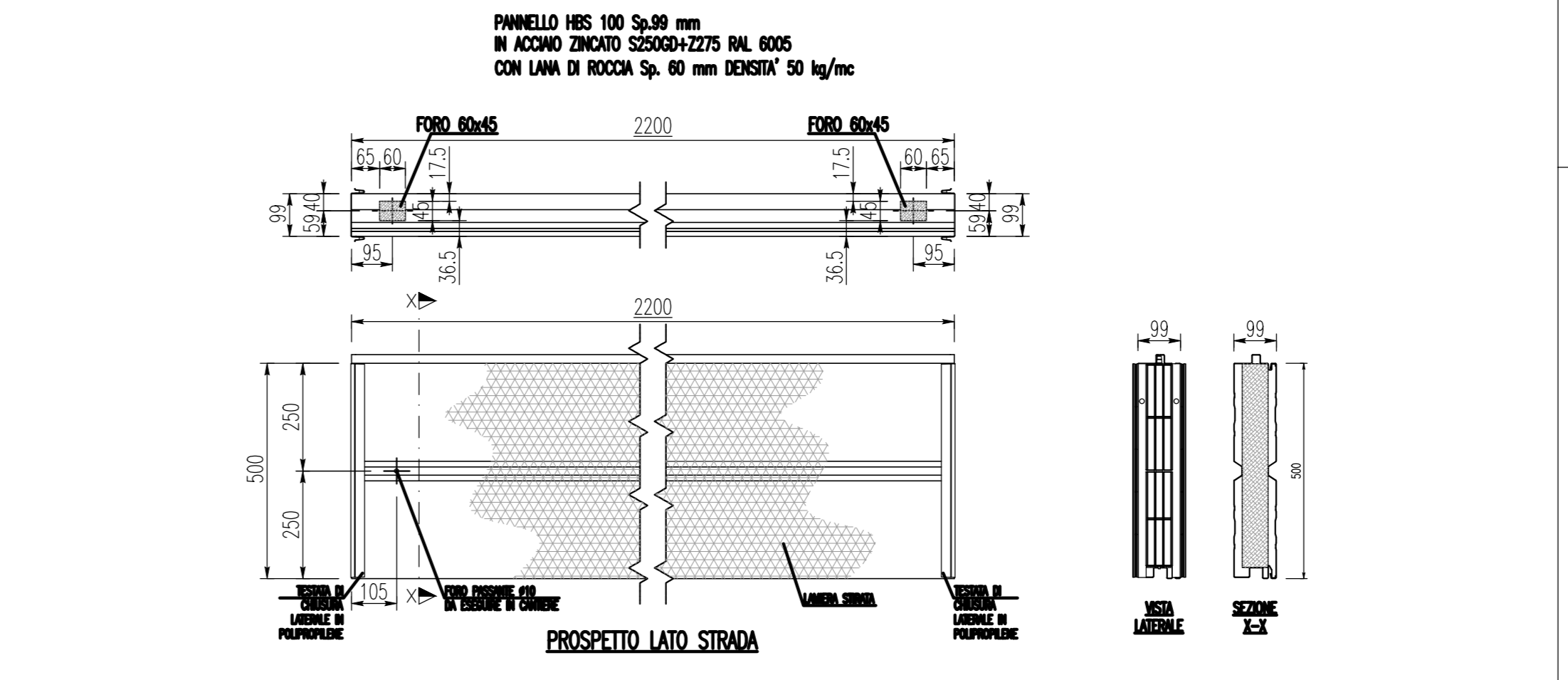
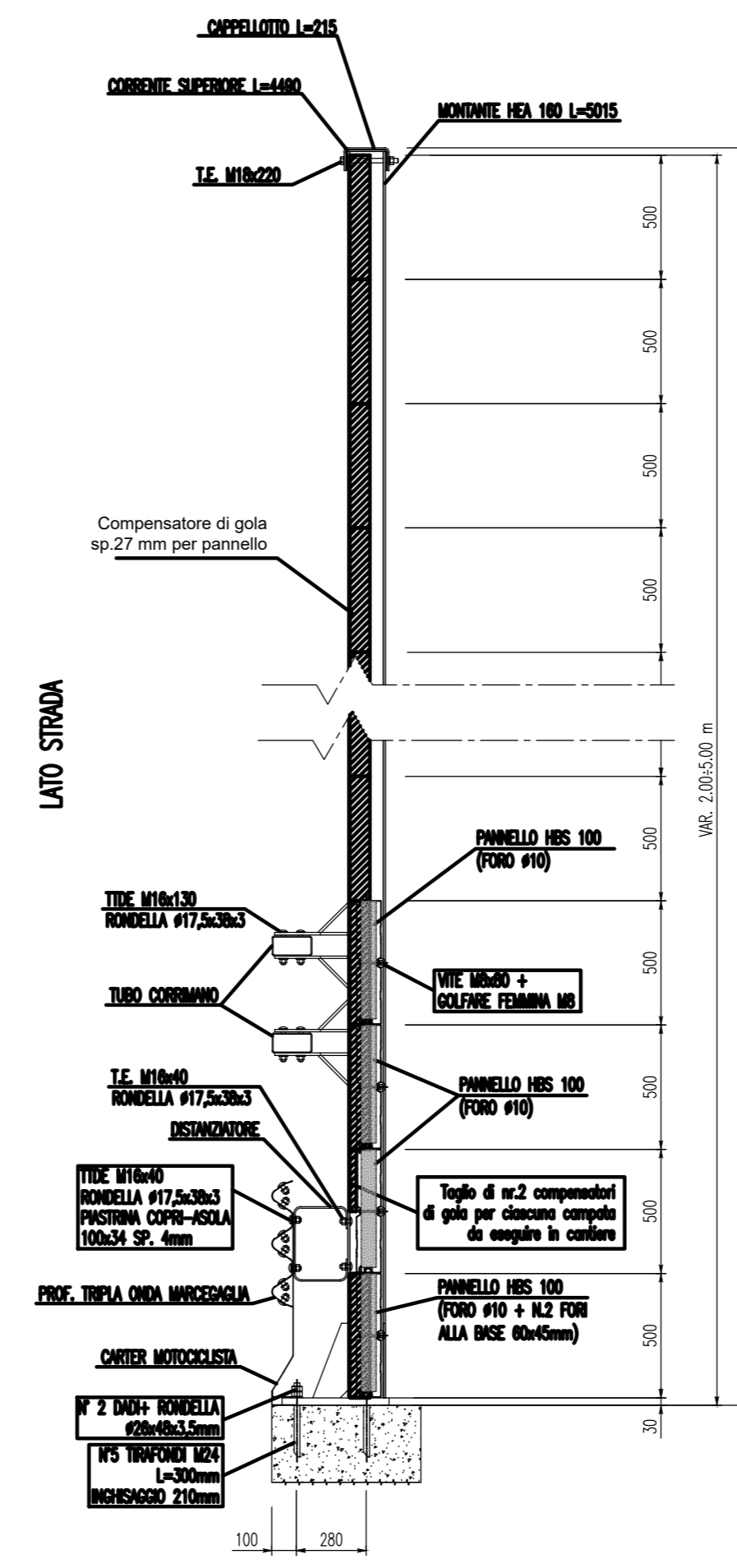
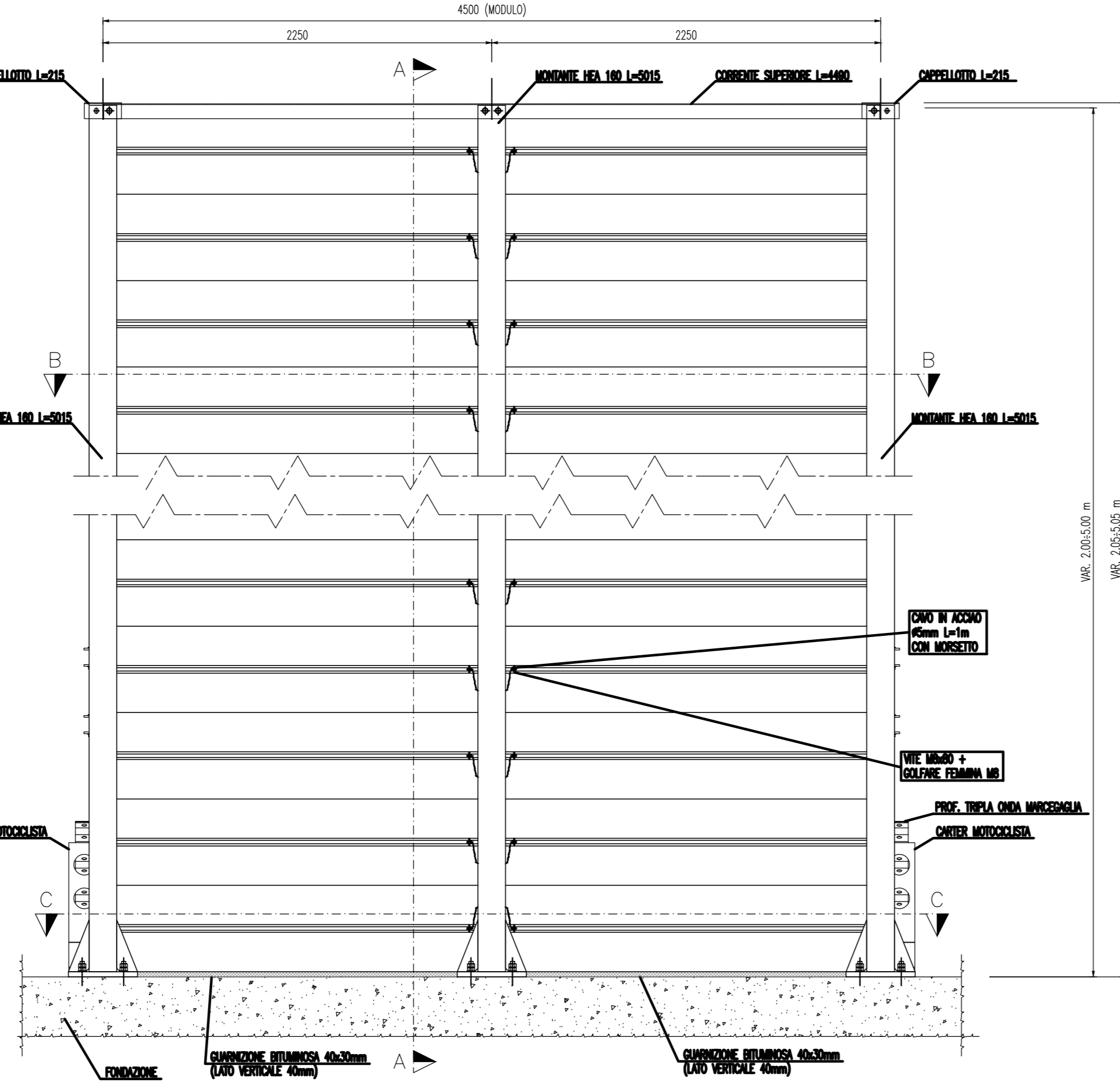
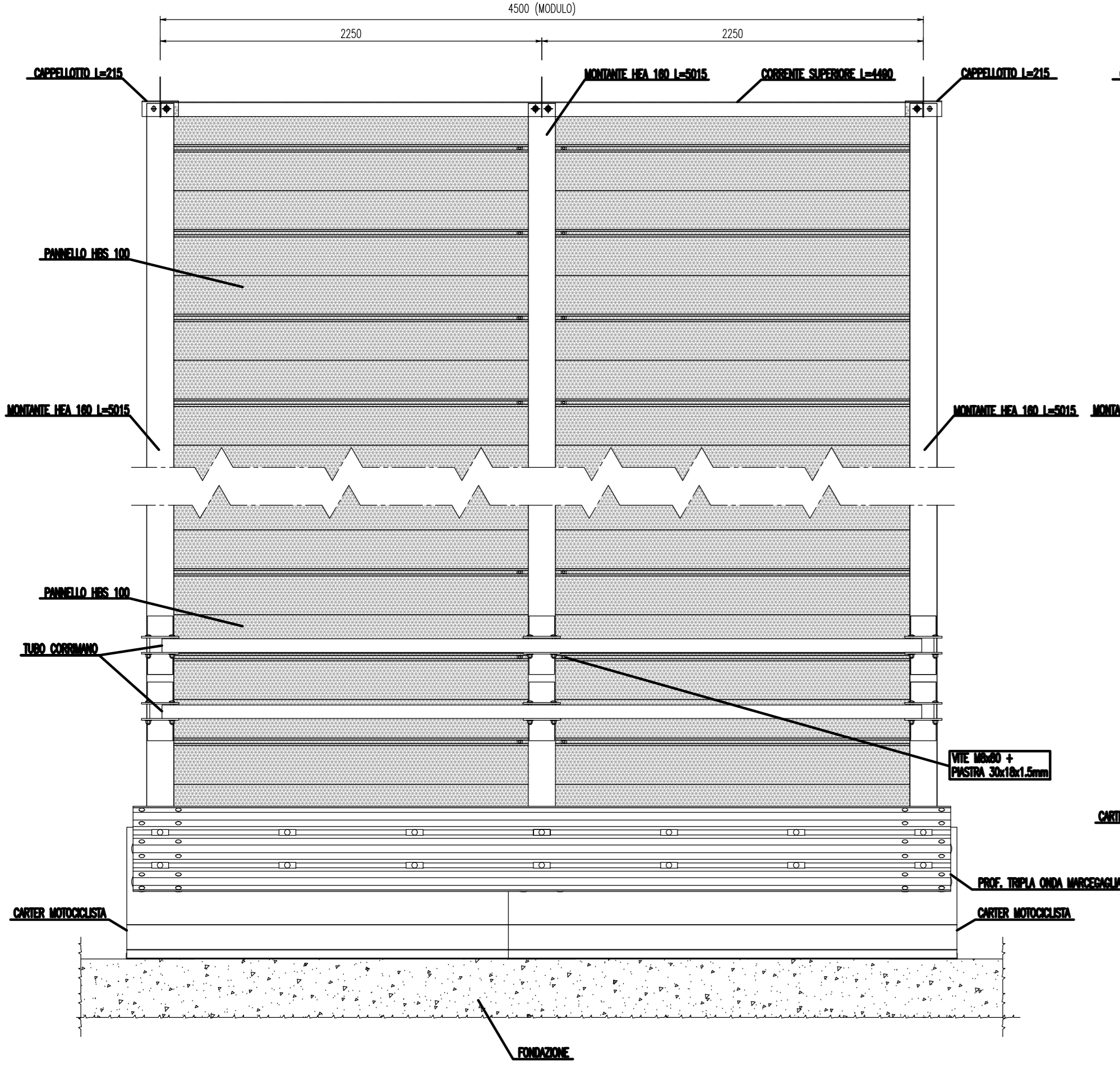


IMMAGINE BARRIERA INTEGRATA CON FINITURA OPACA



NOTA:  
PER UBICAZIONE, CARATTERISTICHE DIMENSIONALI E TIPOLOGIA DELLE  
BARRIERE, SI RIMANDA AI SEGUENTI ELABORATI:  
"VO-2-20, VO-2-21, VO-2-22, VO-2-23, VO-2-24, VO-2-25".

**Sanas**  
GRUPPO FS ITALIANE DIREZIONE PROGETTAZIONE E REALIZZAZIONE LAVORI

Raddoppio da due a quattro corsie della variante alla  
S.S.268 "del Vesuvio"  
Tratto dal Km 0+000 al Km 7+750 - 2° lotto 1° stralcio

PROGETTO DEFINITIVO

PROGETTAZIONE:  
**RISA** **AMBERG ENGINEERING** **ETACONS S.p.A.** **cdi** **LAND**

PROGETTISTI:  
Ing. Andrea Del Grosso  
Ordine Ing. Genova n. 3611  
Ing. Tommaso Di Bari  
Ordine Ing. Taranto n. 1083  
Ing. Vito Caporaso  
Ordine Ing. Taranto n. 1080  
Arch. Andreas Kipar  
Ordine Arch. Milano n.13356 - Progettista e  
Direttore Tecnico LAND Italia Srl  
Ing. Primo Stasi  
Ordine Ing. Lecce n. 842

IL RESPONSABILE dell'Integrazione tra le varie discipline specialistiche:  
Ing. Alessandro Altella  
Ordine Ing. Genova n. 73954

Visto: IL RESPONSABILE DEL PROCEDIMENTO:  
Ing. Giovanni Guarino

IL GEOLOGO:  
Dott. Geol. Roberto Pedone  
Ordine Geologi della Liguria n. 183

Ambiente  
Studio Preliminare Ambientale  
Tipologico e dettagli barriere antirumore

CODICE PROGETTO	PROGETTO	NOME FILE	REVISIONE	SCALA:
DPNA0281	21	T00I04AMB01_A	A	varie
C				
B				
A	EMMISSIONE	Ottobre 2022	A.F.rossi	P.rossi
REV.	DESCRIZIONE	DATA	REDATTO	VERIFICATO
			APPROVATO	