










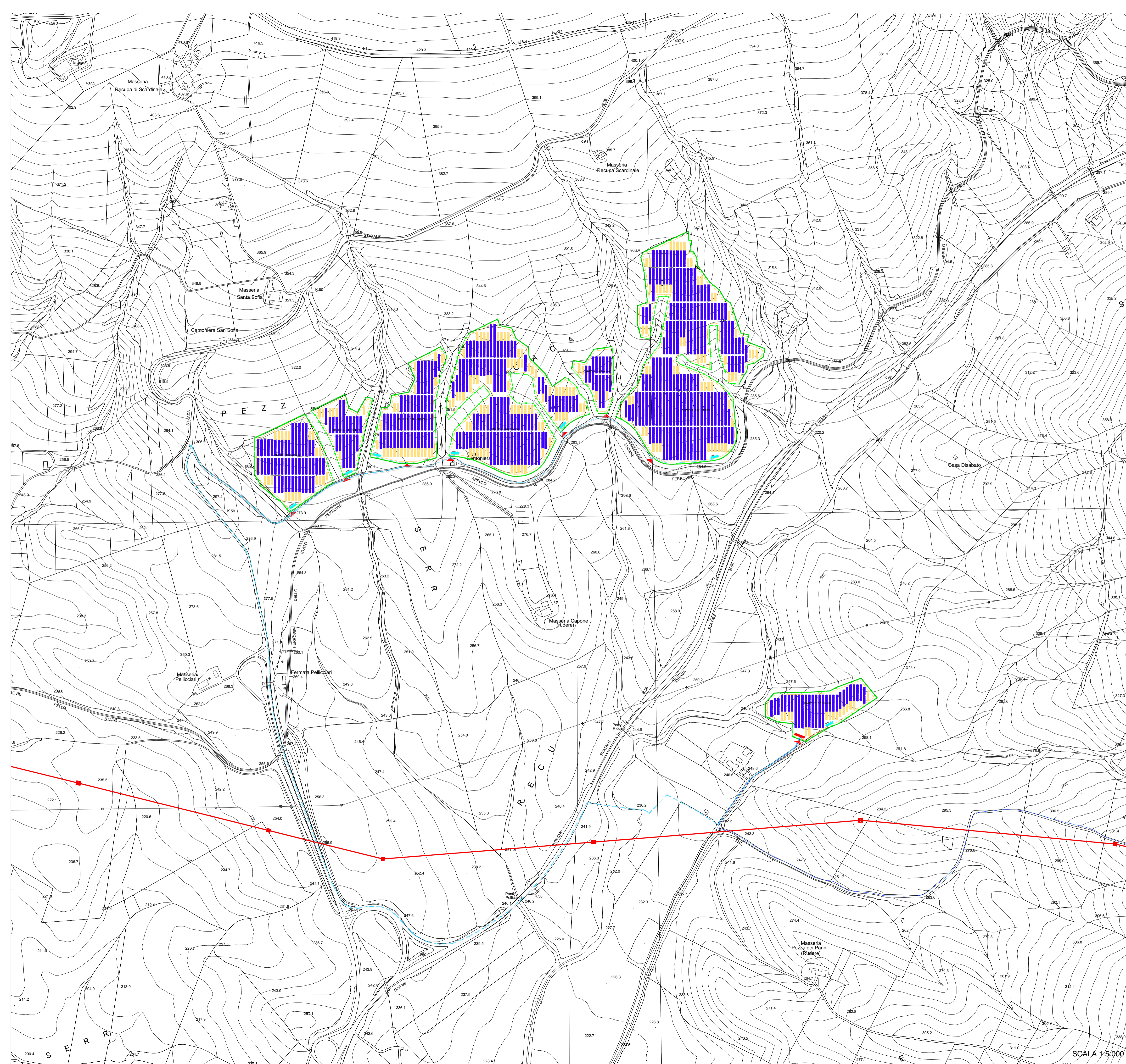
TIPOLOGIA MODULO:  
CANADIAN CS7N - 640 MS da 665 W

TRACKER:  
N. 202 SOLTEC 2v17 = 6.868 pannelli  
N. 519 SOLTEC 2v34 = 35.292 pannelli

POTENZA INSTALLATA:  
TOT. PANNELLI 42.160 X 665 = 28.036,40 KW

**Legenda**

-  Recinzione impianto
-  Power Station
-  Cabina di consegna
-  Cavidotto MT interno
-  Cavidotto MT esterno
-  Vela fotovoltaica 56x665 W
-  Vela fotovoltaica 28x665 W
-  Uliveto intensivo perimetrale
-  Ingresso impianto



COMUNE DI GRAVINA IN PUGLIA



**PROGETTO DEFINITIVO PER LA REALIZZAZIONE  
DI UN IMPIANTO AGROVOLTAICO  
E RELATIVE OPERE DI CONNESSIONE ALLA R.T.N.**

ELABORATO  
**PLANIMETRIA GENERALE IMPIANTO SU BASE CTR** **EP\_03**

**PROPONENTE:**



**MYSUN S.r.l.**  
Sede Legale Via Domenico Nicolai n. 104  
70122 BARI (BA)  
parcofotovoltaico@pec.it

**PROGETTO:**



**ATECH srl**  
Via della Resistenza 48  
70125 Bari (BA)  
pec: atechsrl@legalmail.it  
Direttore Tecnico: Ing. Orazio Tricarico



0	MAG 2022	B.B.	A.A. - O.T.	A.A. - O.T.	Progetto definitivo
EM./REV.	DATA	REDATTO	VERIFICATO	APPROVATO	DESCRIZIONE

SCALA 1:5,000