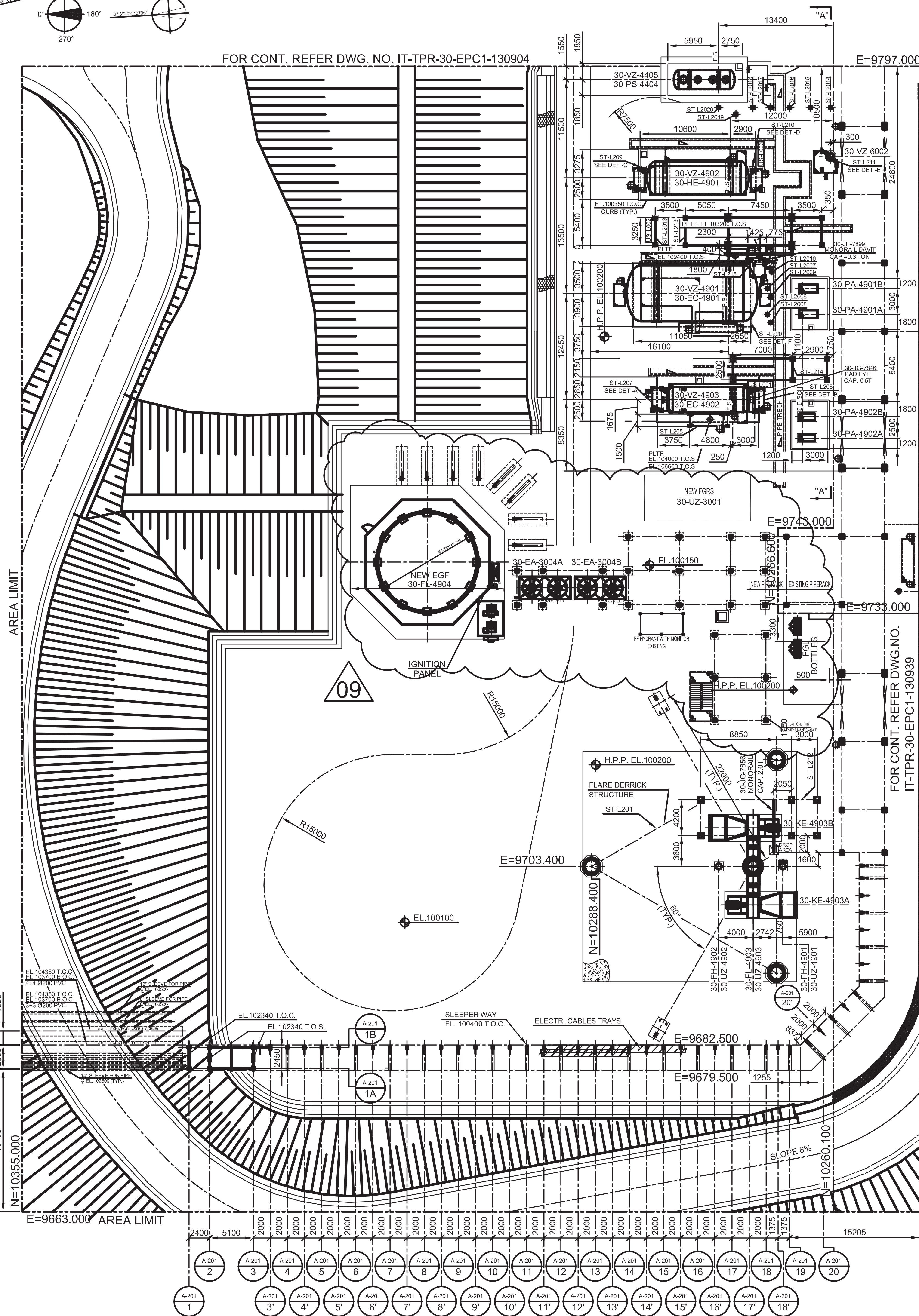
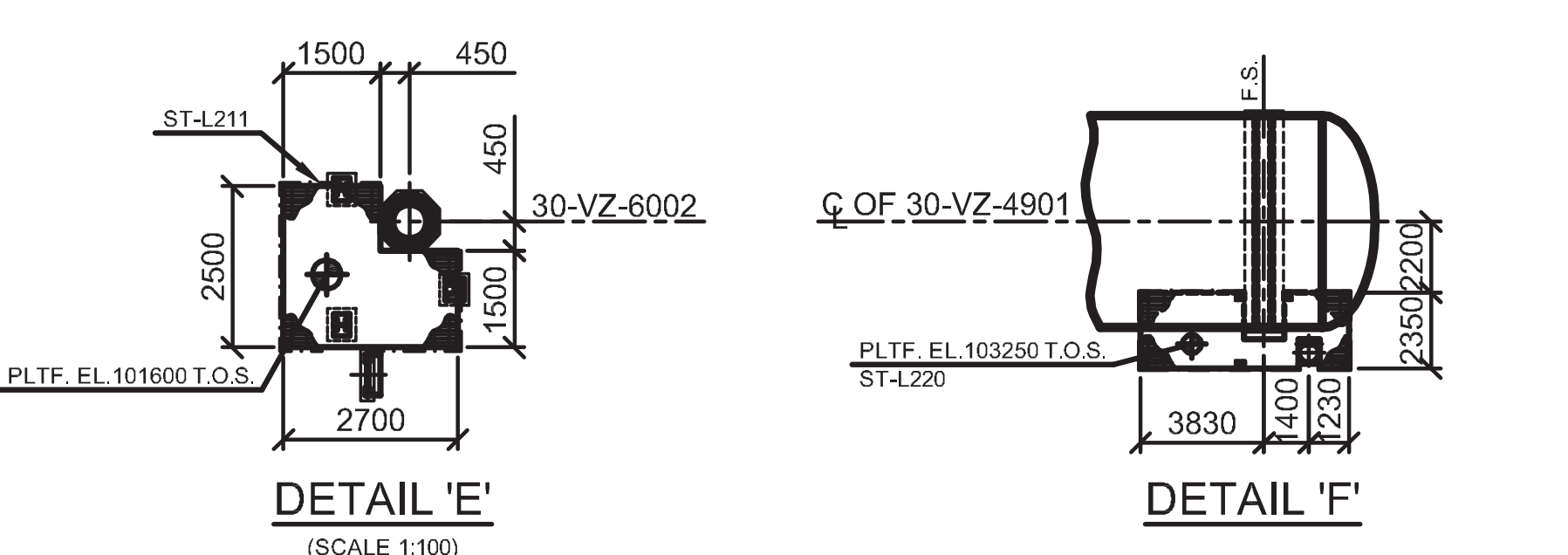
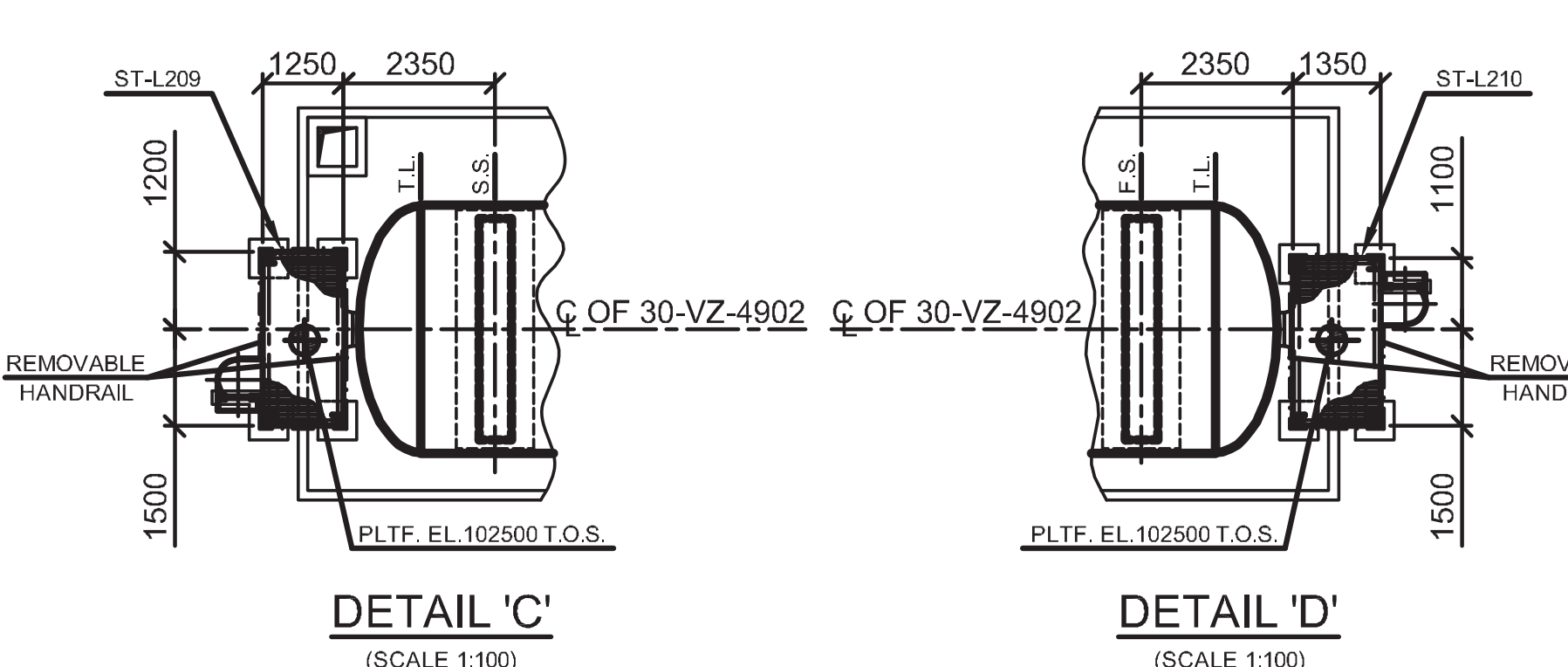
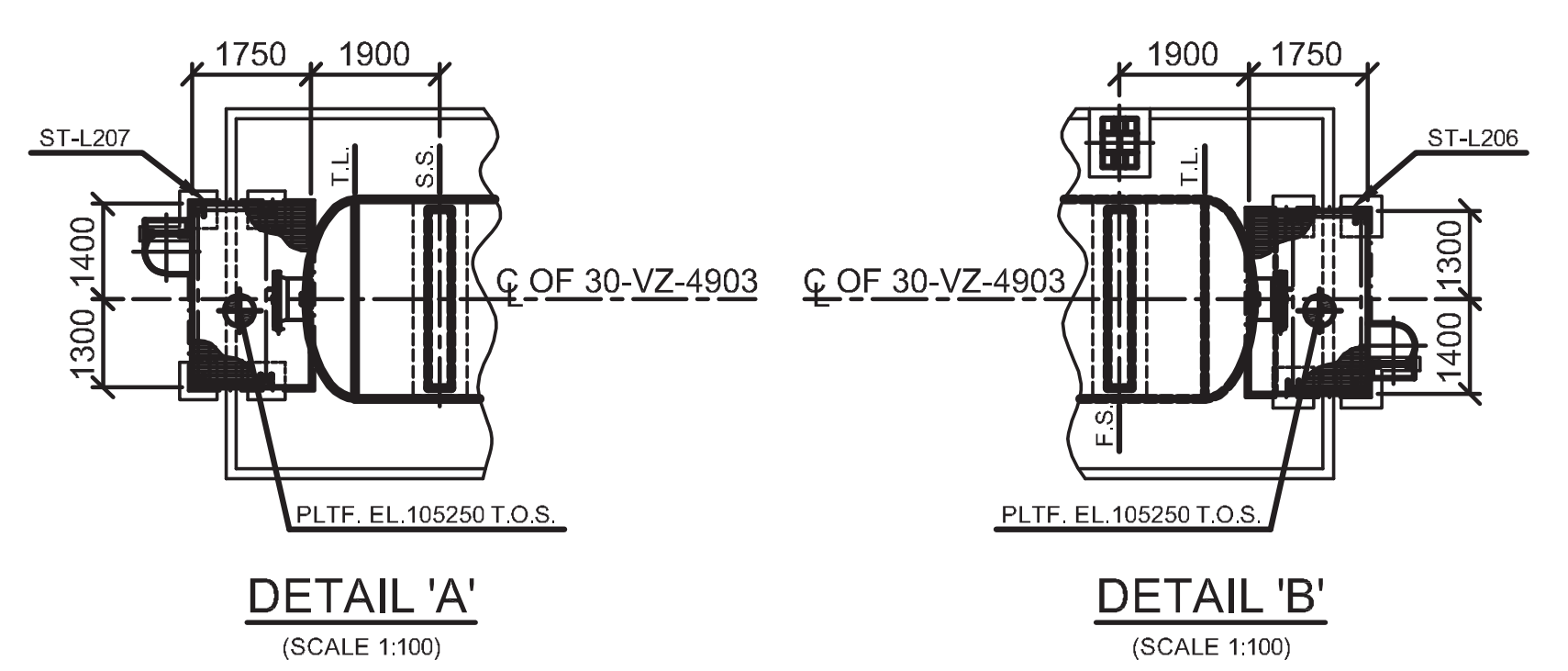
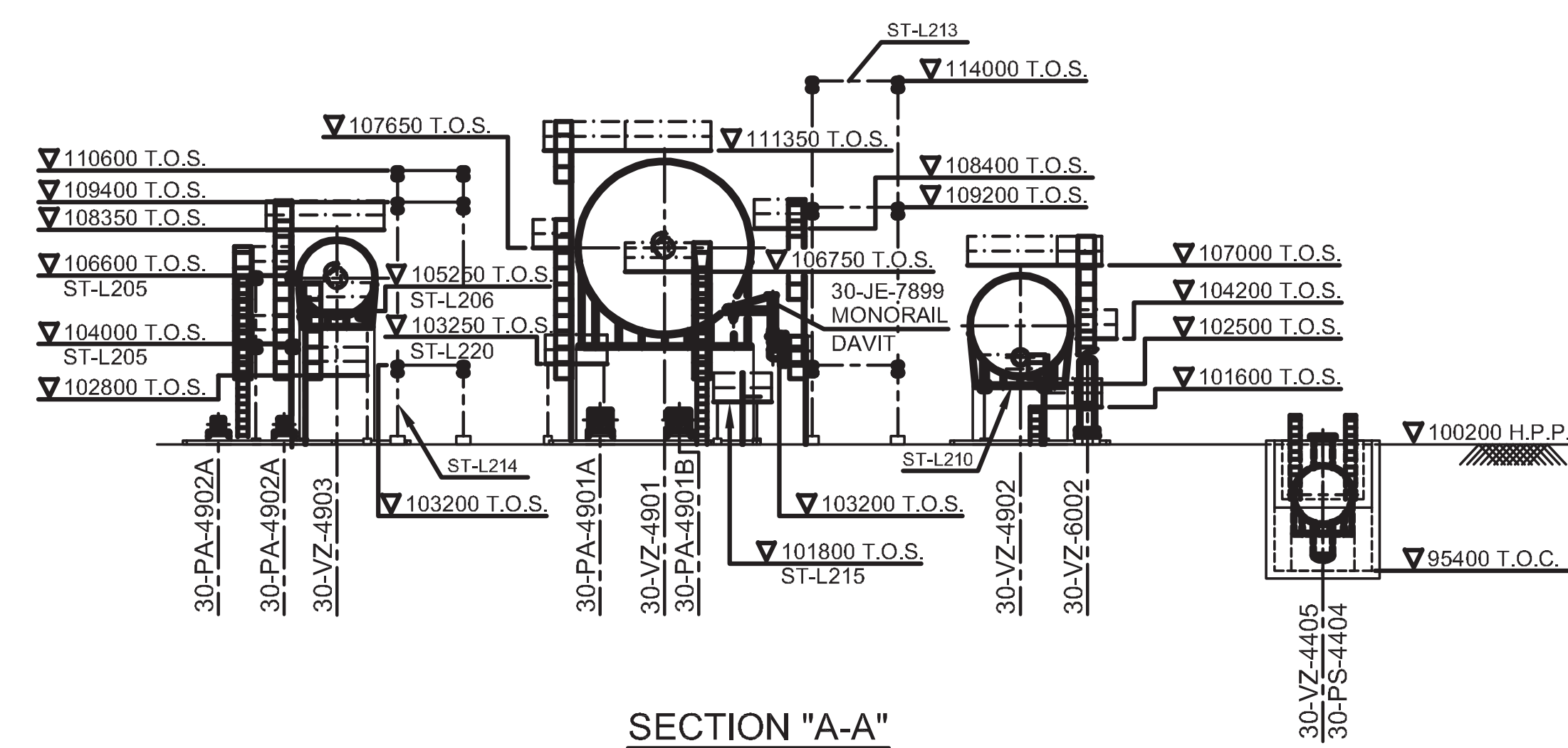


FOR CONT. REFER DWG. NO. IT-TPR-30-EPC1-130904



FOR CONT. REFER DWG. NO. IT-TPR-30-EPC1-130935



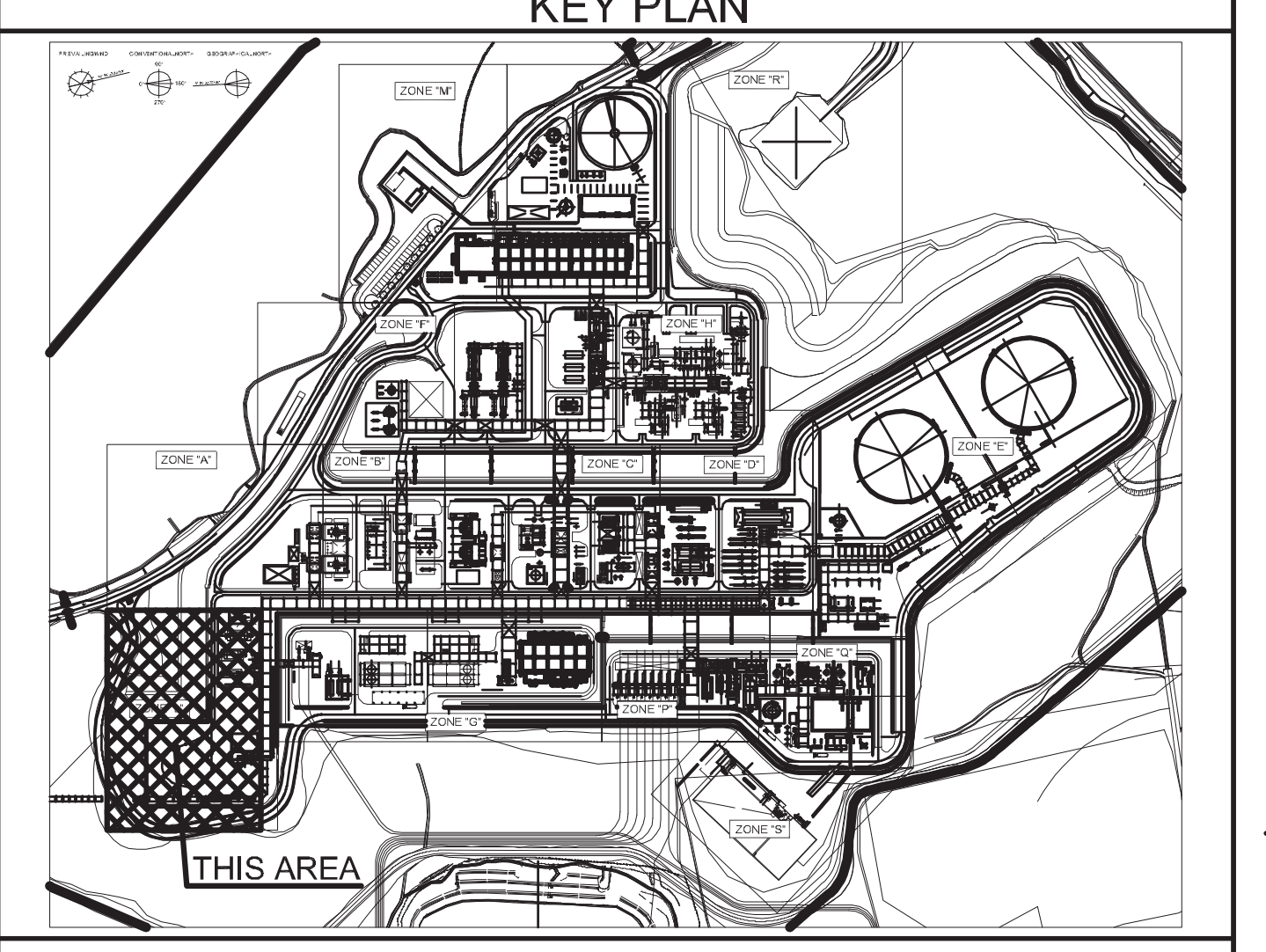
I-STRUCTURE LIST				
SIR No.	STRUCTURE No.	EAST CO-ORDINATES	NORTH CO-ORDINATES	T.O.S. ELEVATION
1	ST-L206	9768.000	10267.833	100875
2	ST-L207	9771.000	10267.833	100875
3	ST-L208	9767.005	10267.414	100875
4	ST-L209	9770.005	10267.414	100875
5	ST-L210	9772.950	10267.278	102500
6	ST-L211	9792.200	10266.400	102700
7	ST-L212	9792.200	10262.800	102700
8	ST-L213	9792.200	10265.200	102700
9	ST-L214	9792.200	10267.500	102700
10	ST-L215	9792.200	10269.500	102700
11	ST-L216	9791.400	10271.500	102700
12	ST-L205	9792.200	10273.500	102700

EQUIPMENT LIST			
ITEM N°	EQUIPMENT DESCRIPTION	EQUIPMENT SUPPORTING ELEVATION	REMARKS
30-EC-4901	HP / WET FLARE K.O. DRUM HEATER	ON 30-VZ-4901	-
30-EC-4902	LP / ACID FLARE K.O. DRUM HEATER	ON 30-VZ-4903	-
30-FH-4901	HP / WET FLARE STACK	100500	-
30-FH-4902	HP / COLD FLARE STACK	100500	-
30-FL-4903	LP / ACID FLARE STACK	100500	-
30-HE-4901	HP / COLD FLARE K.O. DRUM HEATER	ON 30-VZ-4902	-
30-KE-4903A/B	LP ACID FLARE BLOWER	100620	-
30-PA-4901A/B	HP / WET FLARE K.O. DRUM PUMPS	100500	-
30-PA-4902A/B	LP / ACID FLARE K.O. DRUM PUMPS	100500	-
30-PS-4404	FLARE AREA CLOSED DRAIN UNLOADING PUMP	ON 30-VZ-4405	-
30-UZ-4901	HP / WET FLARE PACKAGE	100200	-
30-UZ-4902	HP / COLD FLARE PACKAGE	100200	-
30-UZ-4903	LP / ACID FLARE PACKAGE	100200	-
30-VZ-4405	FLARE AREA CLOSED DRAIN DRUM	96790	-
30-VZ-4901	HP / WET FLARE K.O. DRUM	103900	-
30-VZ-4902	HP / COLD FLARE K.O. DRUM	102400	-
30-VZ-4903	LP / ACID FLARE K.O. DRUM	104650	-
30-VZ-6002	FLARE SYSTEM FUEL GAS K.O. DRUM	100500	-

REFERENCE DRAWINGS	
1. OIL CENTRE PLOT PLAN DRAWING NO.	IT-TPR-30-EPC1-130900
2. OIL CENTRE KEY PLAN DRAWING NO.	IT-TPR-30-EPC1-130902
3. OIL CENTRE EQUIPMENT LAYOUT KEY PLAN NO.	IT-TPR-30-EPC1-130980

NOTES	
1. OIL CENTRE DATUM POINT CO-ORDINATES SYSTEM : E=10000.00 CORRESPOND TO E=2612196.767 N=10000.00 CORRESPOND TO N=4473760.597	
2. ALL COORDINATES ARE IN METERS	
3. ALL DIMENSIONS & ELEVATION ARE IN MILLIMETERS	
4. ELEVATION 100000 IS REFERRED TO THE HIGHEST POINT OF PAVING (H.P.P.) AND CORRESPONDING TO: H.P.P.=1039.3 MT ABOVE SEA LEVEL	
5. DELETED	
6. DELETED	
7. DELETED	
8. DELETED	
9. DELETED	

LEGEND AND SYMBOLS	
--- ZONE LIMIT/AREA LIMIT	T.O.S. TOP OF STEEL
--- GRATING	T.L. EQUIPMENT TANGENT LINE
--- B.O.B. BOTTOM OF BASE PLATE	T.O.G. TOP OF GRATING
--- B.O.P. BOTTOM OF PIPE	US-XXXX UTILITY STATION
--- C.L. CENTER LINE	--- PIPE TRENCH
--- EL. ELEVATION	
--- F.S. FIXED SADDLE	
--- H.P.P. HIGHEST PAVING POINT	
--- T.O.C. TOP OF CONCRETE	



Rev	Date	Status	Revision Memo	Issued by	Checked by	Approved by
09	20-May-2022	AFC	ISSUE FOR CONSTRUCTION	M.SANTO	G.GIORDANO	D.CUSCUNA
08	08-May-2019	ASB	AS BUILT	A.FERRARESE	C.BOLDRINI	C.BOLDRINI
07	10-Jan-2017	AFC	ISSUE FOR CONSTRUCTION	P.VAZE	M.SOTTIMANO	F.ROSSETTI
06	10-Sep-2015	AFC	ISSUE FOR CONSTRUCTION	P.VAZE	M.SOTTIMANO	F.ROSSETTI
05	21-Jan-2015	AFC	ISSUE FOR CONSTRUCTION	P.VAZE	M.SOTTIMANO	F.ROSSETTI
04	18-Jul-2014	AFC	COMPANY COMMENTS INCORPORATED	P.VAZE	M.SOTTIMANO	R.GRASSI
03	29-Jan-2014	AFC	COMPANY COMMENTS INCORPORATED	P.VAZE	M.SOTTIMANO	R.GRASSI
02	30-Aug-2013	IFA	COMPANY COMMENTS INCORPORATED	B.SANGOLI	M.SOTTIMANO	R.GRASSI
01	25-Mar-2013	IFA	COMPANY COMMENTS INCORPORATED	B.SANGOLI	M.SOTTIMANO	R.GRASSI
00	06-Dec-2012	IFC	FIRST ISSUE	K.THORIA	M.ROSSI	R.GRASSI

This document is the property of TOTAL and shall not be disclosed to third parties or reproduced without permission of the owner. This document has been generated for an Electronic Document Management System. When printed it is considered an uncontrolled copy. The controlled copy is the screen version and it is the holder's responsibility that he/she holds the latest version.

OIL CENTRE EQUIPMENT LAYOUT ZONE L PLAN VIEW - L1			
CENTRO OLI - PLANIMETRIA DELLE APPARECCHIATURE PER LA ZONA L			
Doc type	LAY	Syst. / S-Syst.	00
Document No.	IT-TPR-30-EPC1-130938		REV: 09
Contractor	TR01-XX-DE-T3L0101	Format	AD
Scale	1:200	Class	1
Page	1	of	1