

30-VZ-3001
INLET COMPRESSOR
1ST STAGE SUCTION SCRUBBER

30-KA-3001
INLET GAS COMPRESSOR
1ST STAGE

30-EA-3001
INLET COMPRESSOR 1ST
STAGE AFTERCOOLER

30-VZ-3002
INLET COMPRESSOR
2ND STAGE SUCTION SCRUBBER

30-KA-3002
INLET GAS COMPRESSOR
2ND STAGE

30-EA-3002
INLET COMPRESSOR
2ND STAGE AFTERCOOLER

30-VZ-3003
INLET COMPRESSOR
2ND STAGE DISCHARGE SCRUBBER

GENERAL NOTES:

- TEMPERATURE, PRESSURE, MASS FLOW AND DUTY REFER TO CASE YEAR 3-10 WINTER EXPORT OF H & M BALANCE REV.02
- TEMPERATURA, PRESSIONE, PORTATA MASSICA E CARICO SI RIFERISCONO AL CASO ANNO 3-10 ESPORTAZIONE INVERNALE DI H&M BALANCE REV.02

- FOR TEMPERATURE, PRESSURE, MASS FLOW AND DUTY REFER TO H & M BALANCE DOCUMENT NO. IT-TPR-30-DGIM-100904.
- PER TEMPERATURA, PRESSIONE, PORTATA MASSICA E CARICO FARE RIFERIMENTO A H&M BALANCE DOC. NO. IT-TPR-30-DGIM-100904.

NOTES:

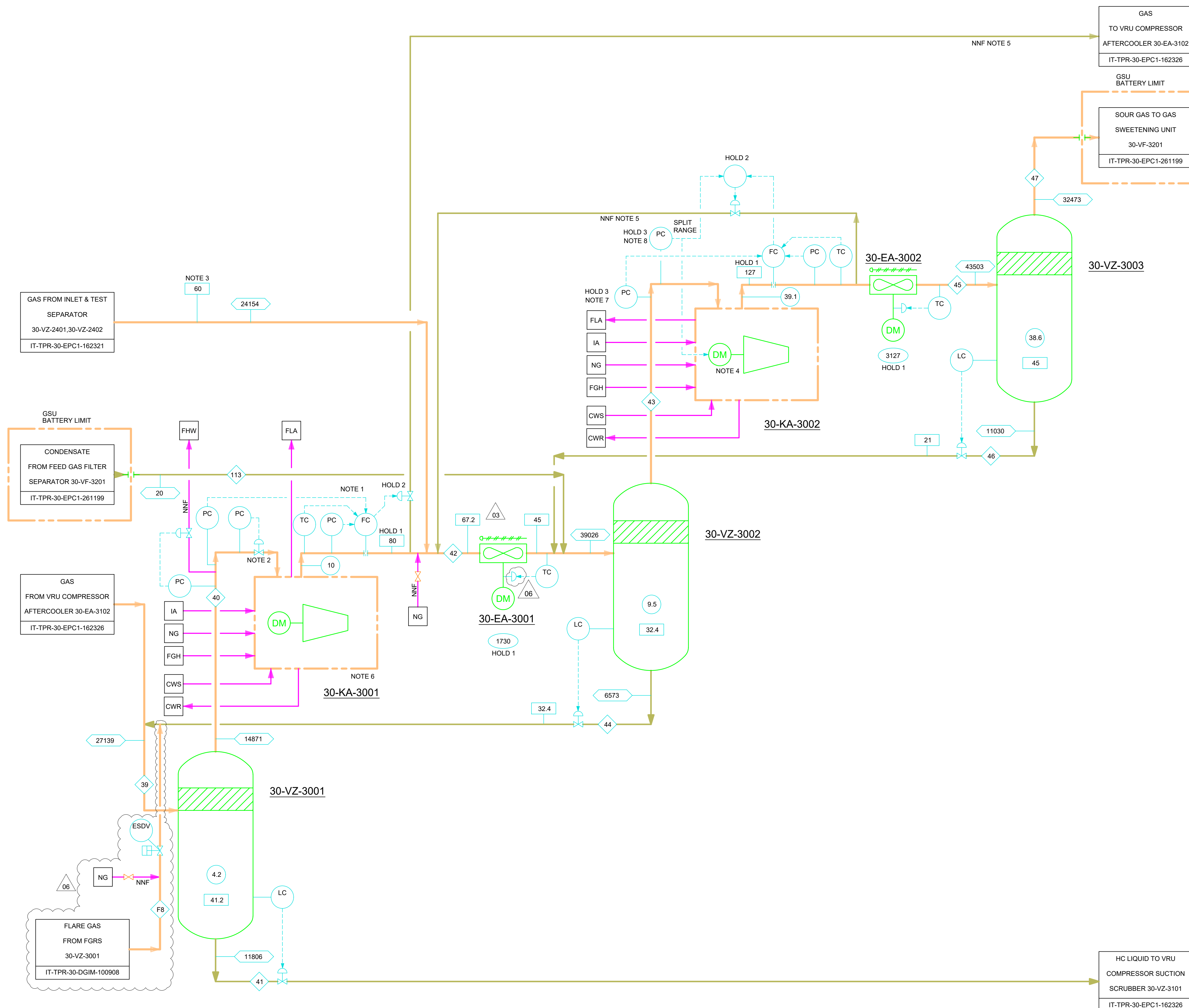
- 1- FIXED SPEED TWO STAGES COMPRESSOR. EACH STAGE IS PROVIDED WITH A DEDICATED CONTROL SYSTEM.
- 1- COMPRESSORE A DUE STADI A VELOCITA' FISSA. OGNI STADIO E' DOTATO DI UN SISTEMA DI CONTROLLO DEDICATO
- 2- SUCTION THROTTLING PRESSURE CONTROL VALVE.
- 2- VALVOLA DI CONTROLLO DELLA PRESSIONE DI ASPIRAZIONE.
- 3- MAX OPERATING TEMPERATURE : 85°C.
- 3- MASSIMA TEMPERATURA OPERATIVA : 85°C.
- 4- VARIABLE SPEED MOTOR.
- 4- MOTORE A VELOCITA' VARIABILE.
- 5- COMPRESSOR ANTISURGE LINE.
- 5- LINEA "ANTISURGE" DEL COMPRESSORE
- 6- COMPRESSOR 30-KA-3101 AND 30-KA-3001 WILL BE MOUNTED ON A COMMON SHAFT WITH A SINGLE ELECTRICAL MOTOR.
- 6- IL COMPRESSORE 30-KA-3101 E IL 30-KA-3001 SARANNO MONTATI SU UN ALBERO COMUNE CON UN UNICO MOTORE ELETTRICO
- 7- PC FOR ANTISURGE COMPRESSOR CONTROL SYSTEM.
- 7- PC PER IL CONTROLLO DEL SISTEMA "ANTISURGE" DEL COMPRESSORE
- 8- PC FOR COMPRESSOR SUCTION CONTROL SYSTEM.
- 8- PC PER IL CONTROLLO DEL SISTEMA DI ASPIRAZIONE DEL COMPRESSORE
- 9- DELETED.
- 9- ELIMINATO

HOLD:

- 1- TO BE CONFIRMED BY COMPRESSOR VENDOR
- 1- DA CONFERMARE DA PARTE DEL FORNITORE DEL COMPRESSORE
- 2- ANTISURGE CONTROL SYSTEM TO BE DEFINED AND SUPPLIED BY COMPRESSOR VENDOR.
- 2- IL SISTEMA DI CONTROLLO "ANTISURGE" DEVE ESSERE DEFINITO E FORNITO DAL FORNITORE DEL COMPRESSORE

LEGEND:

- STREAM NUMBER.
- TEMPERATURE, °C
- PRESSURE, barg
- DUTY, kW.
- MASS FLOW, kg/h.
- HIGH PRESSURE WET FLARE
- INSTRUMENT AIR
- NITROGEN GAS
- HIGH PRESSURE FUEL GAS
- COOLING WATER SUPPLY
- COOLING WATER RETURN
- LOW PRESSURE ACID FLARE



Rev	Date	Status	Revision Memo	Issued by	Checked by	Approved by
06	13-May-2022	AFC	Issued for Construction	F. Valentini	G. Giordano	D. Cuscunà
05	01-Sep-2014	AFC	COMPANY COMMENTS INCORPORATED	M. Grazioli	A. Brambilla	A. Trentin
04	26-Aug-2013	AFC	COMPANY COMMENTS INCORPORATED	J. Pathan	A. Brambilla	A. Trentin
03	10-April-2013	IFA	COMPANY COMMENTS INCORPORATED	J. Pathan	A. Brambilla	A. Trentin
02	12-Feb-2013	IFC	COMPANY COMMENTS INCORPORATED	J. Pathan	A. Brambilla	A. Trentin
01	30-Nov-2012	IFC	COMPANY COMMENTS INCORPORATED	J. Pathan	A. Brambilla	A. Trentin
00	18-Jul-2012	IFC	FIRST ISSUE	J. Pathan	A. Brambilla	A. Trentin

This Document is the property of TOTAL and shall not be disclosed to third parties or reproduced without permission of the owner
This document has been generated by an Electronic Document Management System. When printed it is considered as a for information only copy. The controlled copy is the screen version and it is the holder's responsibility that he/she holds the latest valid version.

PROCESS FLOW DIAGRAM FOR UNIT 30
INLET GAS COMPRESSION
DIAGRAMMA DI FLUSSO DI PROCESSO PER L'UNITA' 30
COMPRESSIONE DEL GAS IN INGRESSO

Doc type: PFD	Syst. / S-Syst.: 30	Discipline: PRO	Electronic Filename: IT-TPR-30-EPC1-162325_rev06.dwg
COMPANY Document N°: IT-TPR-30-EPC1-162325	REV: 06	Scale: NONE	Class: 1
CONTRACTOR Document N°: TR01-VZ-DP-T30000003001	Format: A1	Sheet: 1 of 1	

This document is the property of TOTAL. Information contained herein shall not be used, copied, communicated or disclosed in whole or in part WITHOUT PRIOR WRITTEN AGREEMENT.