

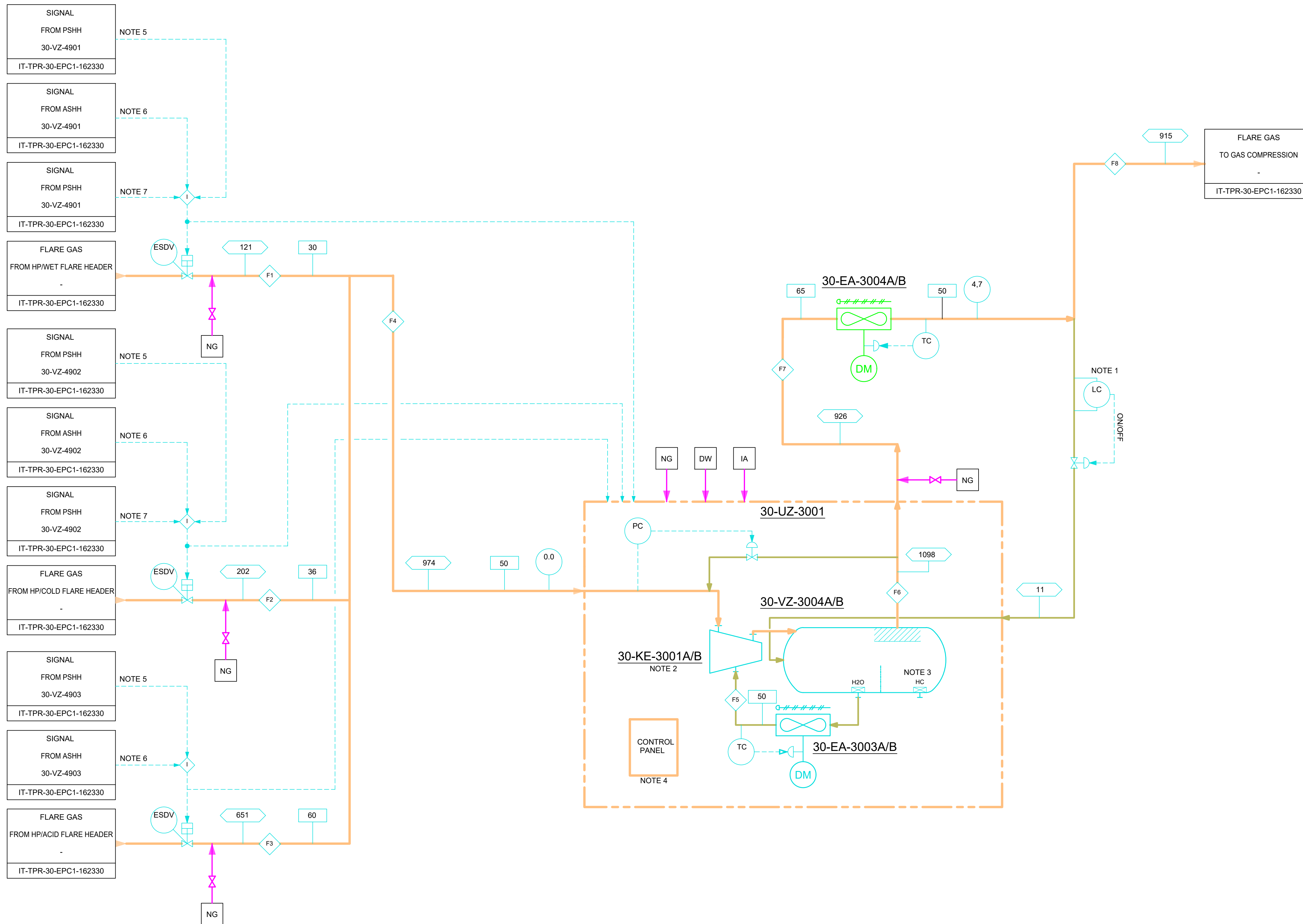
**30-KE-3001A/B**  
FGRS LIQUID RING COMPRESSOR

**30-EA-3004A/B**  
FGRS OUTLET AIR COOLERS

**30-UZ-3001**  
FLARE GAS RECOVERY SYSTEM (FGRS)

**30-VZ-3004A/B**  
FGRS LIQUID RING COMPRESSOR OUTLET GAS/LIQUID SEPARATORS

**30-EA-3003A/B**  
FGRS LIQUID RING COMPRESSOR OUTLET AIR COOLERS



**REFERENCE DRAWINGS**

**GENERAL NOTES:**

- FOR TEMPERATURE PRESSURE, MASS FLOW AND DUTY REFER TO H & M BALANCE DOC. NO. IT-TPR-30-DGIM-100904.
- PER TEMPERATURA, PRESSIONE, PORTATA MASSIVA E CARICO FARE RIFERIMENTO A H&M BALANCE DOC. NO. IT-TPR-30-DGIM-100904.

**NOTES:**

- 1- WATER CONDENSATE TO COLLECT IN VERTICAL PIPE.
- 1- ACQUA CONDENSATA DA RACCOLGERE IN TUBO VERTICALE.
- 2- COMPRESSORS MODE OF OPERATION : 2 X 100%.
- 2- MODALITÀ DI FUNZIONAMENTO DEI COMPRESSORI: 2 X 100%.
- 3- NO HC FORMATION IS EXPECTED BY PROPERLY SETTING COMPRESSED STREAM TEMPERATURE (ADJUSTING LIQUID RING TEMPERATURE EXITING AIR-COOLER).
- 3- NON SI PREVEDE NESSUNA FORMAZIONE DI IDROCARBURO IMPOSTANDO CORRETTAMENTE LA TEMPERATURA DELLA CORRENTE COMPRESSA (REGOLANDO LA TEMPERATURA DELL'ANELLO LIQUIDO IN USCITA DAL RAFFREDDATORE D'ARIA).
- 4- ESD LOGIC FROM 30-VZ-3101 LINKED TO LIQUID RING COMPRESSORS ESD LOGIC.
- 4- LOGICA ESD DA 30-VZ-3101 COLLEGATA A LOGICA ESD DEI COMPRESSORI AD ANELLO LIQUIDO.
- 5- HIGH HIGH PRESSURE OPENS FOV TO EGF AND SHUT-DOWN FGRS COMPRESSORS.
- 5- L'ALTISSIMA PRESSIONE APRE LA FOV A EGF E SPENGE I COMPRESSORI FGRS.
- 6- HIGH HIGH OXYGEN CONCENTRATION ON FLARE HEADER OPENS FOV TO EGF AND SHUT-DOWN FGRS COMPRESSORS.
- 6- L'ALTISSIMA CONCENTRAZIONE DI OSSIGENO SUL COLLETTORE DELLA TORCIA APRE LA FOV A EGF E SPENGE I COMPRESSORI FGRS.
- 7- HIGH HIGH PRESSURE OPENS FOV TO EGF AND SHUT-DOWN FGRS COMPRESSORS.
- 7- L'ALTISSIMA PRESSIONE APRE LA FOV A EGF E SPENGE I COMPRESSORI FGRS.
- 8- LSHH TO TRIP COMPRESSORS.
- 8- LSHH CAUSA IL BLOCCO DEI COMPRESSORI.

**LEGEND:**

- STREAM NUMBER.
- TEMPERATURE, °C
- PRESSURE, barg
- DUTY, kW.
- MASS FLOW, kg/h.
- LOW PRESSURE FUEL GAS (TO USERS)
- HIGH PRESSURE WET FLARE
- HIGH PRESSURE COLD FLARE
- LOW PRESSURE ACID FLARE
- INSTRUMENT AIR
- LOW PRESSURE STEAM
- LOW PRESSURE STEAM CONDENSATES
- NITROGEN GAS
- ASPHALTENE SOLVENT
- DRINKING WATER

00 13-May-2022 IFR Issued for Review F.Valentini,G.Giordano,D.Cuscunà

Revision Date Status Revision memo Issued by Checked by Approved by



This document is the property of TOTAL and shall not be disclosed to third parties or reproduced without permission of the owner. This document has been generated by an Electronic Document Management System. When printed it is considered as a for information only copy. The controlled copy is the screen version and it is the holder's responsibility that he/she holds the latest valid version.

**FLARE GAS RECOVERY SYSTEM & ENCLOSED GROUND FLARE ENGINEERING DETAILS**  
**PROCESS FLOW DIAGRAM FOR FLARE GAS RECOVERY SYSTEM**  
SISTEMA DI RECUPERO DEL GAS DELLA TORCIA & TORCIA DI TERRA CHIUSO  
DETTAGLI DI INGEGNERIA  
DIAGRAMMA DEL FLUSSO DI PROCESSO PER IL SISTEMA DI RECUPERO GAS DELLA TORCIA

Doc Type: PFD	Syst. / S-Syst.: 30	Discipline: PRO	Electronic Filename: IT-TPR-30-DGIM-100908_rev00.dwg
COMPANY Document N°	IT-TPR-30-DGIM-100908	REV: 00	Scale NONE
CONTRACTOR Document N°	22-111-PK-DV-0004	Format: A1	Sheet 1 of 1