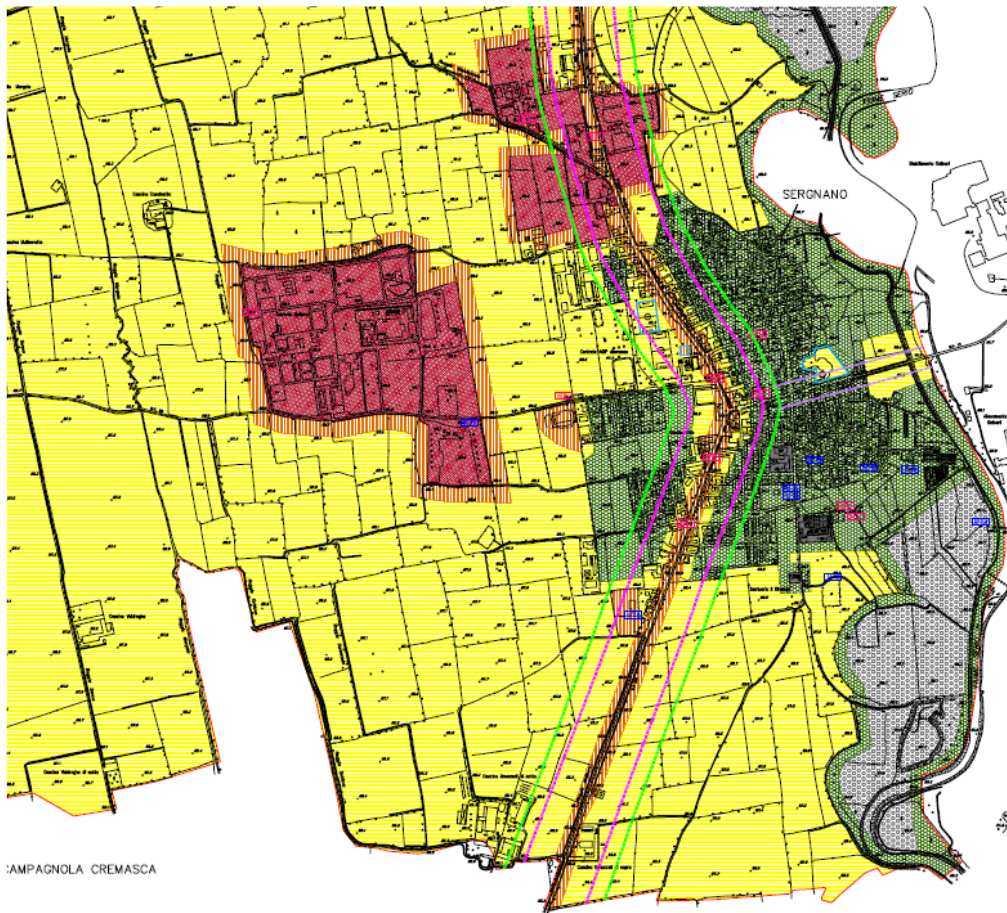


ALLEGATO 1

ESTRATTO ZONIZZAZIONE ACUSTICA



Comune di Sergnano (CR)



CAMPAGNOLA CREMASCA

LIMITI MASSIMI dB (A)

CLASSE



I Aree particolarmente protette

Limiti di Immissione		Limiti di emissione	
diurno	notturno	diurno	notturno
50	40	45	35



II Aree prevalentemente residenziali

Limiti di Immissione		Limiti di emissione	
diurno	notturno	diurno	notturno
55	45	50	40



III Aree di tipo misto

Limiti di Immissione		Limiti di emissione	
diurno	notturno	diurno	notturno
60	50	55	45



IV Aree di intensa attività

Limiti di Immissione		Limiti di emissione	
diurno	notturno	diurno	notturno
65	55	60	50



V Aree prevalentemente industriali

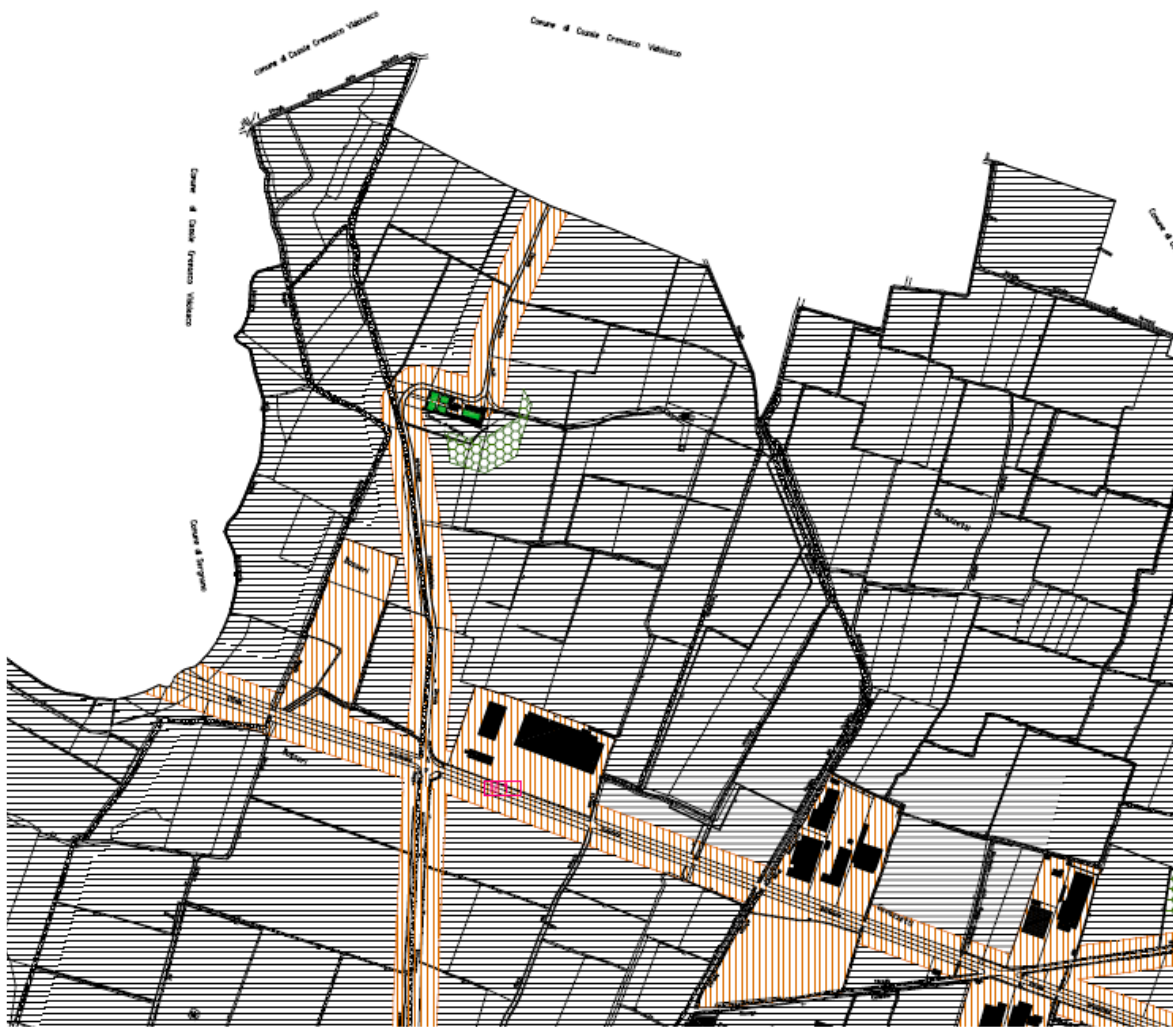
Limiti di Immissione		Limiti di emissione	
diurno	notturno	diurno	notturno
70	60	65	55



VI Aree esclusivamente industriali

Limiti di Immissione		Limiti di emissione	
diurno	notturno	diurno	notturno
70	70	65	65

Comune di Ricengo (CR)



LIMITI MASSIMI dB (A)

CLASSE	DESCRIZIONE	TEMPO DI RIFERIMENTO	
		diurno	notturno
I	Aree particolarmente protette	50	40
II	Aree prevalentemente residenziali	55	45
III	Aree di tipo misto	60	50
IV	Aree di intensa attività	65	55
V	Aree prevalentemente industriali	70	60
VI	Aree esclusivamente industriali	70	70

Comune di Campagnola Cremasca (CR)



- Piani Acustici
- Classe I
 - Classe II
 - Classe III
 - Classe IV
 - Classe V
 - Classe VI

ALLEGATO 2

RAPPORTI DELLE MISURE DI RUMORE EFFETTUATE

STOGIT S.p.A. - Centrale di Sergnano (CR)

Nome misura : Punto 1 - Residuo - Diurno

Località : Sergnano (CR)

Strumentazione : L&D831 - s/n1552

Nome operatore : Ing. Luigi Motta

Data, ora misura : 04/11/2021 14:48:56

TR: diurno

TO: 14.00 - 19.00

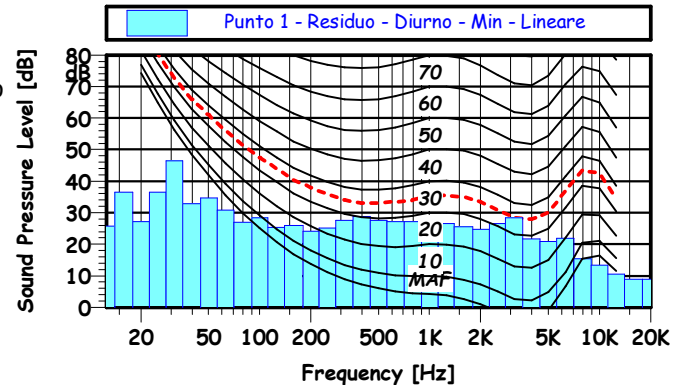
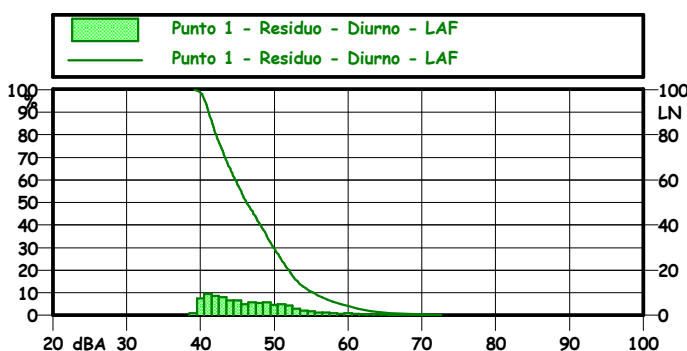
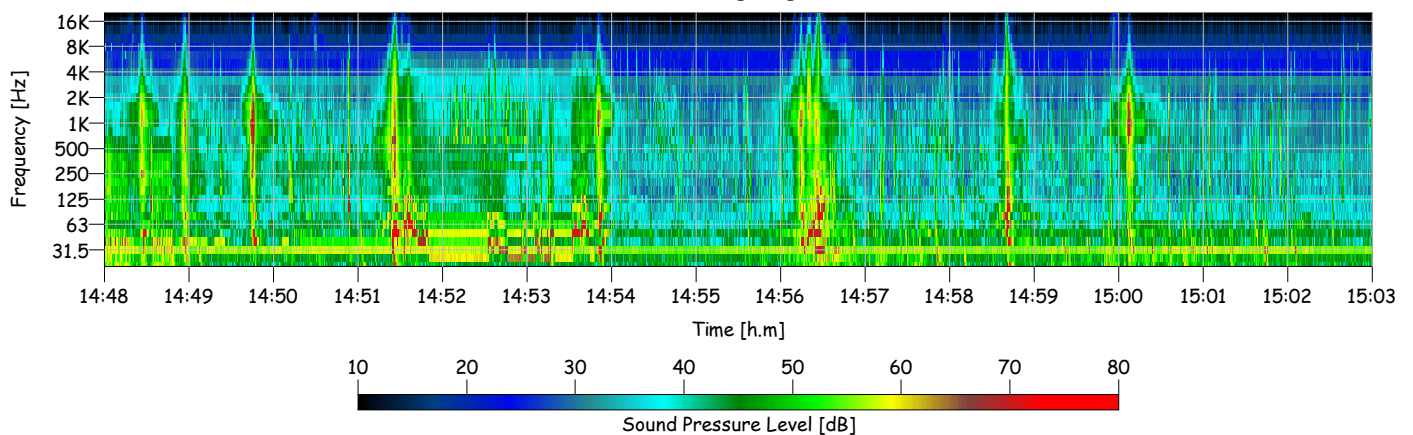
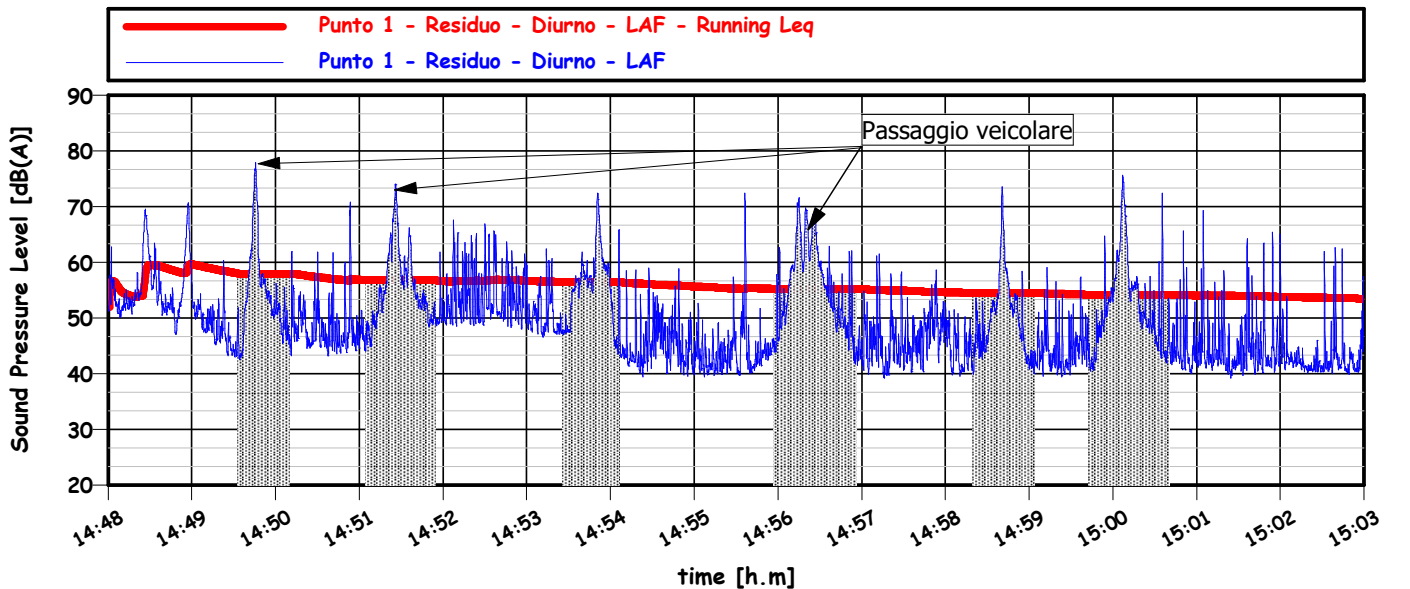
TM: 15 min.

L_{Aeq}: 53.5 dB

L10: 55.3 dBA
 L50: 46.2 dBA
 L90: 41.1 dBA
 L95: 40.6 dBA

LAFmin: 39.2 dB

Punto 1 - GPS: 45°25'33.51"N,9°41'47.76"E



STOGIT S.p.A. - Centrale di Sergnano (CR)

Nome misura : Punto 2 - Residuo - Diurno

Località : Sergnano (CR)

Strumentazione : L&D831 - s/n1552

Nome operatore : Ing. Luigi Motta

Data, ora misura : 04/11/2021 15:11:38

Punto 2 - GPS: 45°25'47.92"N,9°41'41.89"E

TR: diurno

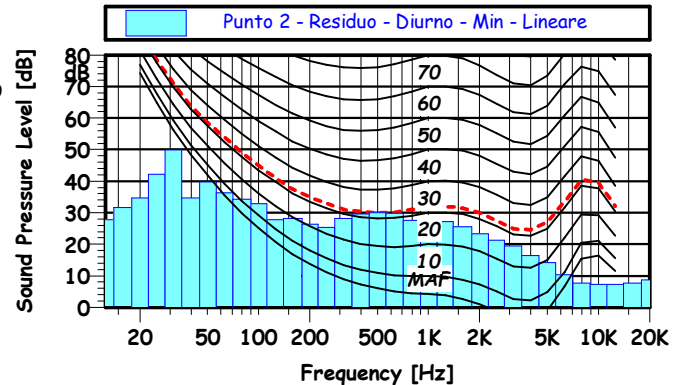
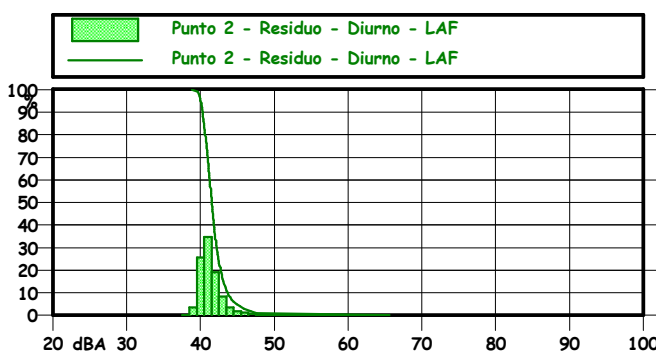
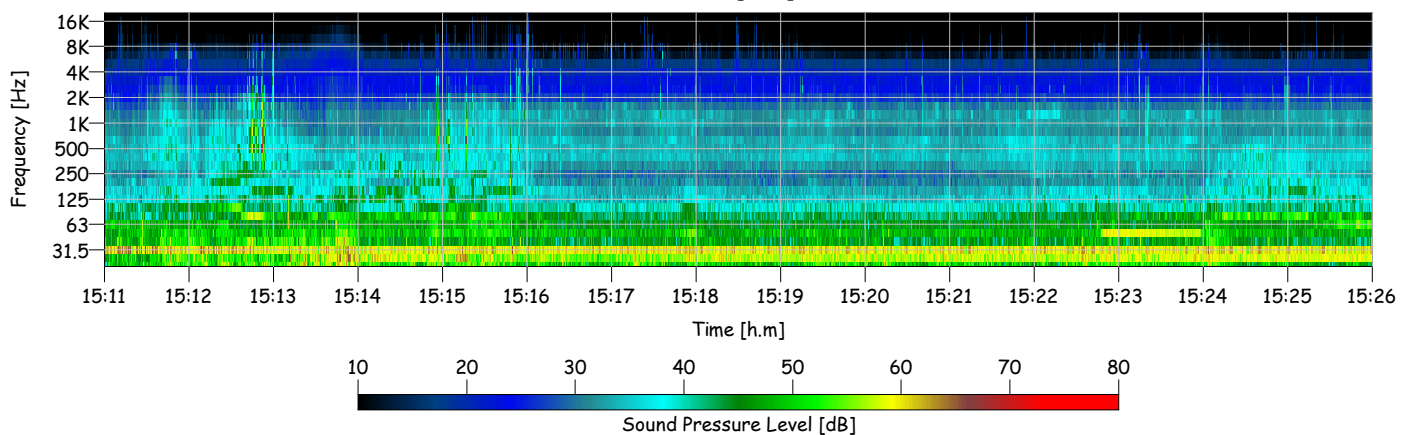
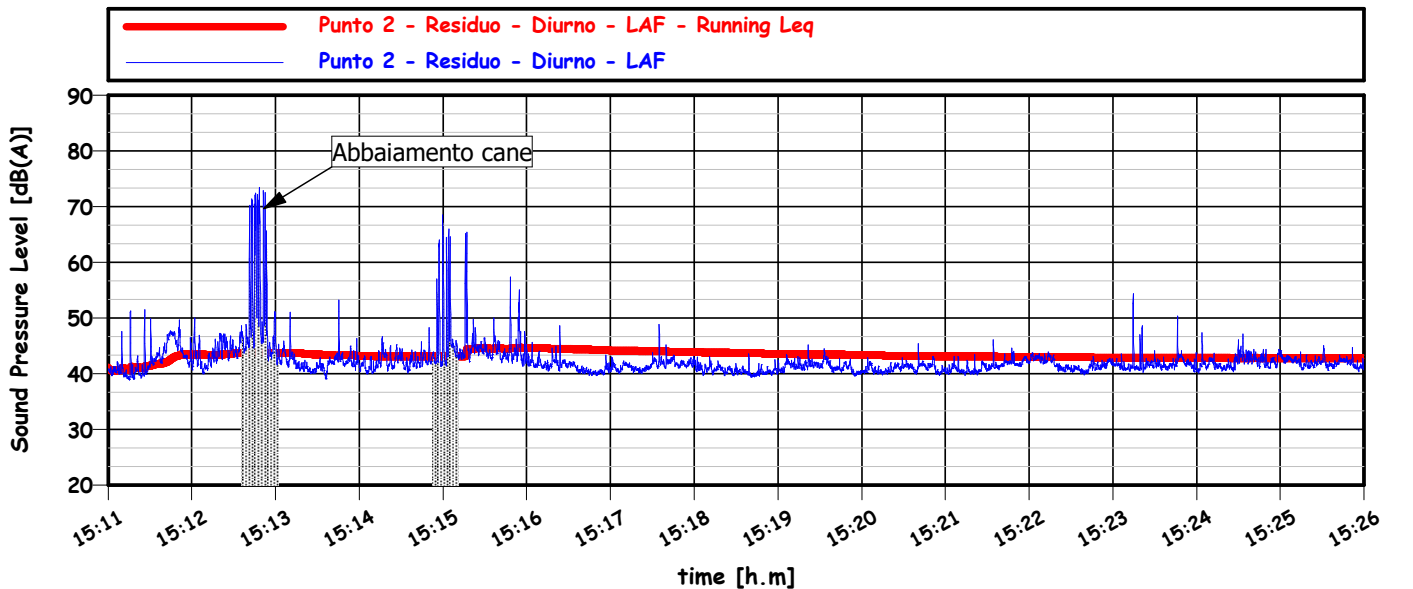
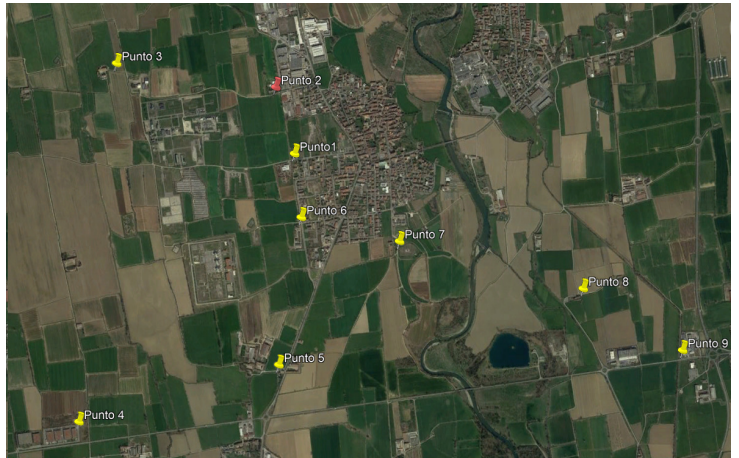
TO: 14.00 - 19.00

TM: 15 min.

L_{Aeq}: 42.7 dB

L10: 43.7 dBA
 L50: 41.5 dBA
 L90: 40.3 dBA
 L95: 40.0 dBA

LAFmin: 38.8 dB



STOGIT S.p.A. - Centrale di Sergnano (CR)

Nome misura : Punto 3 - Residuo - Diurno

Località : Sergnano (CR)

Strumentazione : L&D831 - s/n1552

Nome operatore : Ing. Luigi Motta

Data, ora misura : 04/11/2021 15:36:29

Punto 3 - GPS: 45°25'53.09"N,9°40'52.12"E

TR: diurno

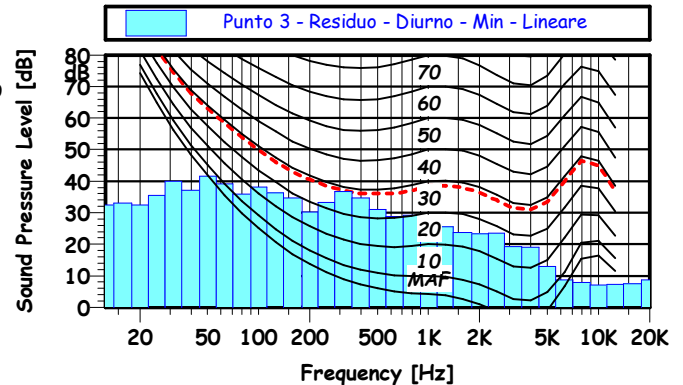
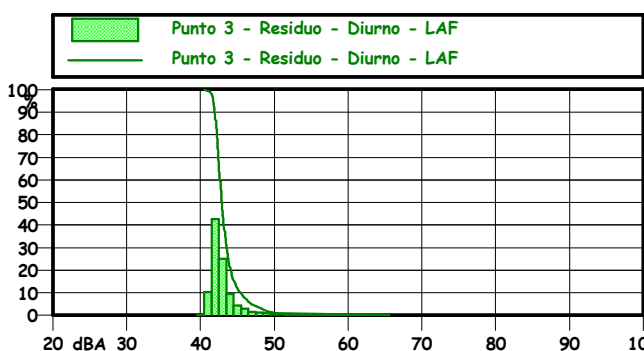
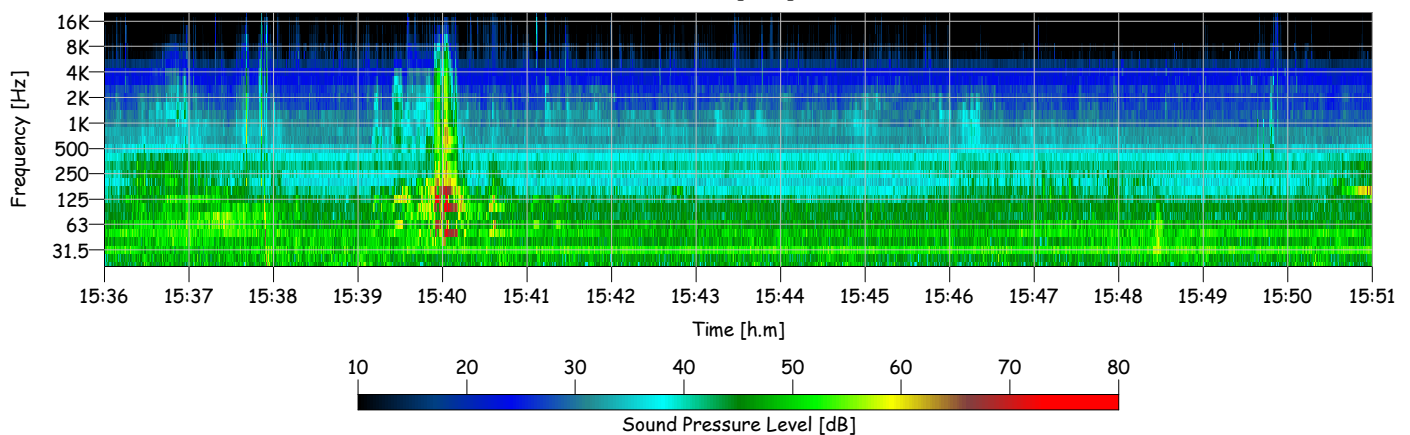
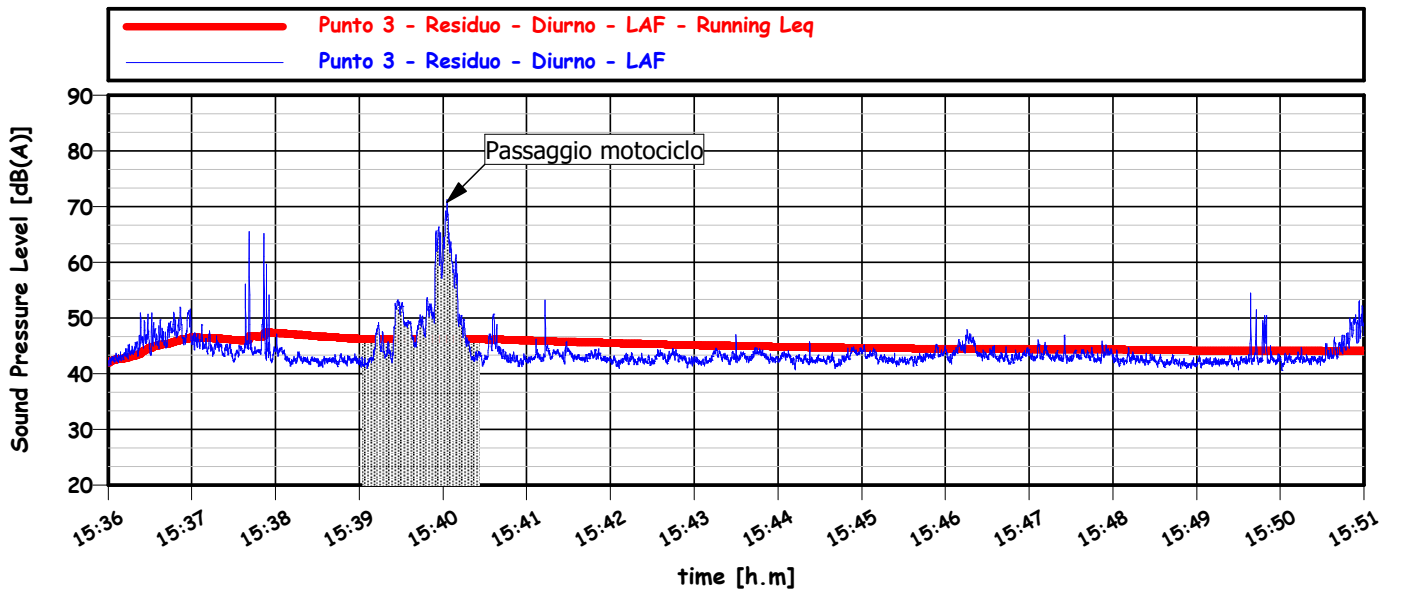
TO: 14.00 - 19.00

TM: 15 min.

L_{Aeq}: 44.2 dB

L10: 45.4 dBA
 L50: 42.9 dBA
 L90: 41.9 dBA
 L95: 41.7 dBA

LAFmin: 40.5 dB



STOGIT S.p.A. - Centrale di Sergnano (CR)

Nome misura : Punto 4 - Residuo - Diurno

Località : Sergnano (CR)

Strumentazione : L&D831 - s/n1552

Nome operatore : Ing. Luigi Motta

Data, ora misura : 04/11/2021 16:51:52

Punto 4 - GPS: 45°24'35.39"N,9°40'40.26"E

TR: diurno

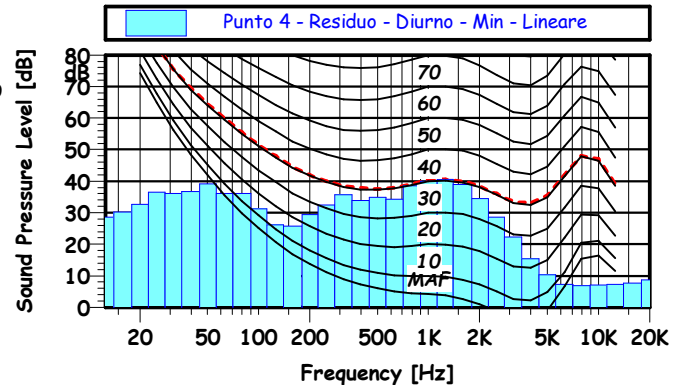
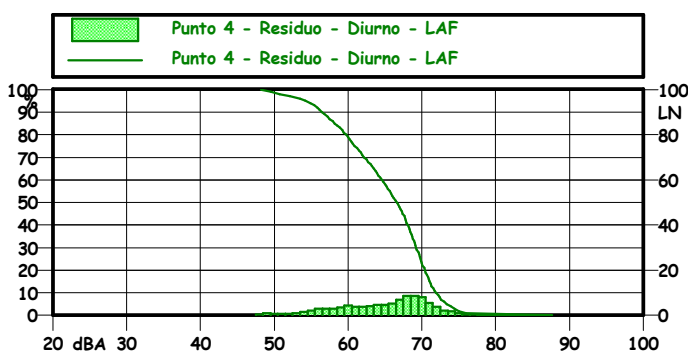
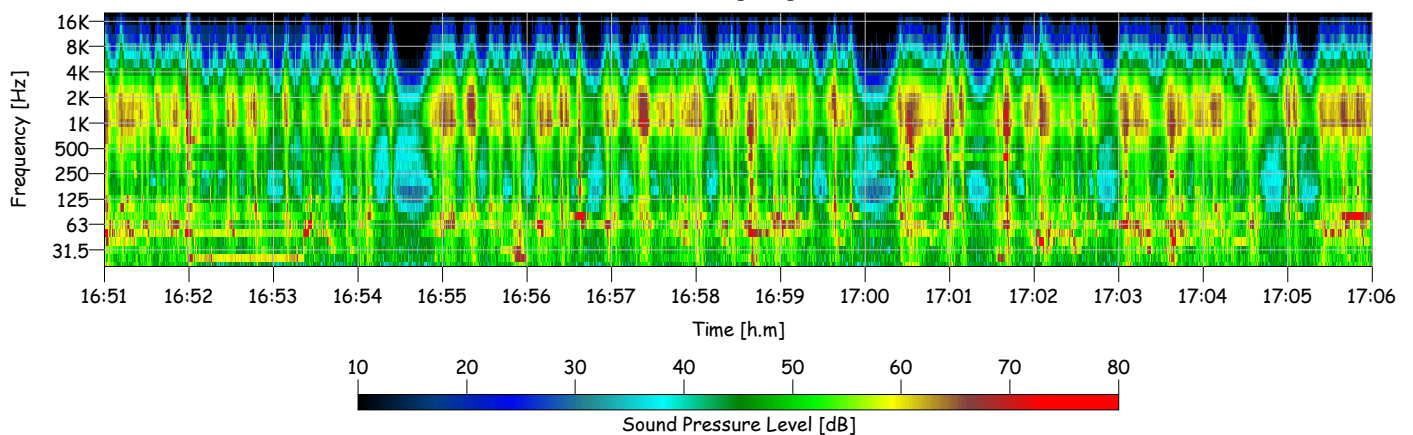
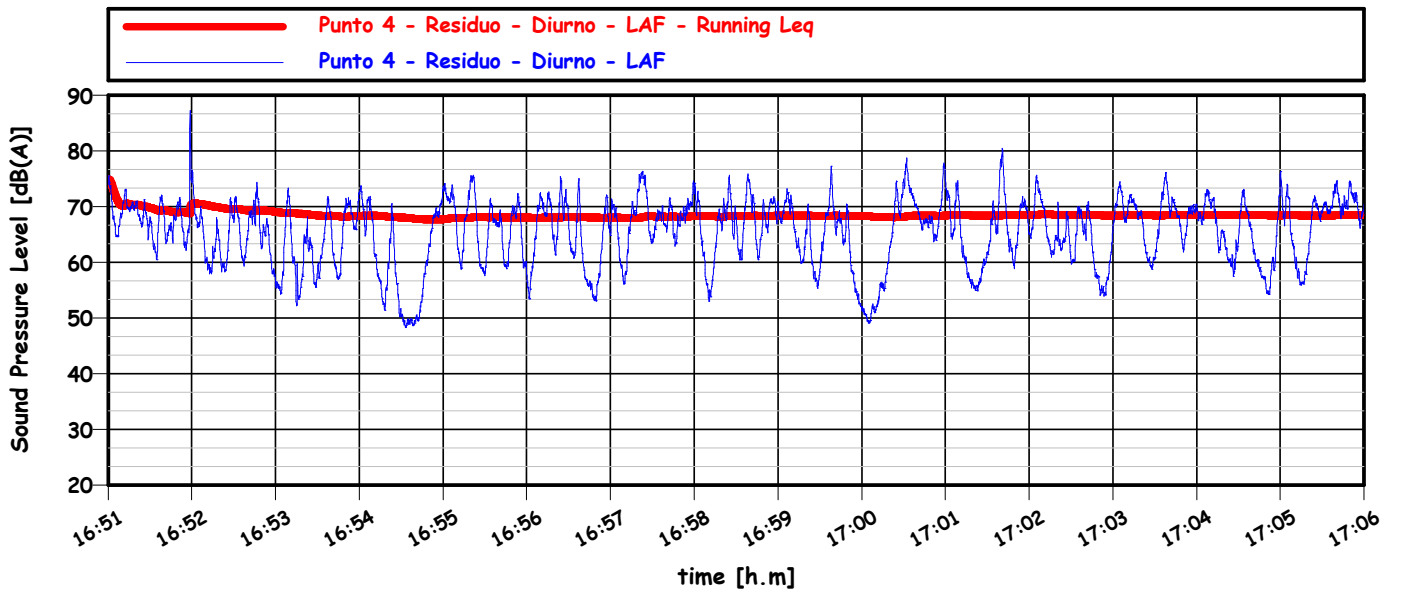
TO: 14.00 - 19.00

TM: 15 min.

LAeq: 68.5 dB

L10: 71.9 dBA
 L50: 66.6 dBA
 L90: 56.4 dBA
 L95: 54.2 dBA

LAFmin: 48.2 dB



STOGIT S.p.A. - Centrale di Sergnano (CR)

Nome misura : Punto 5 - Residuo - Diurno

Località : Sergnano (CR)

Strumentazione : L&D831 - s/n1552

Nome operatore : Ing. Luigi Motta

Data, ora misura : 04/11/2021 16:25:24

Punto 5 - GPS: 45°24'47.76"N,9°41'42.83"E

TR: diurno

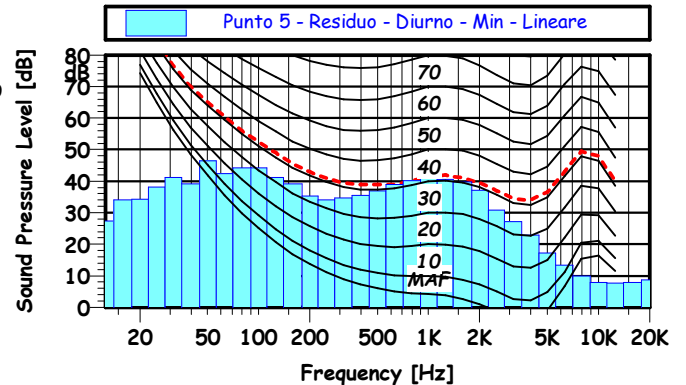
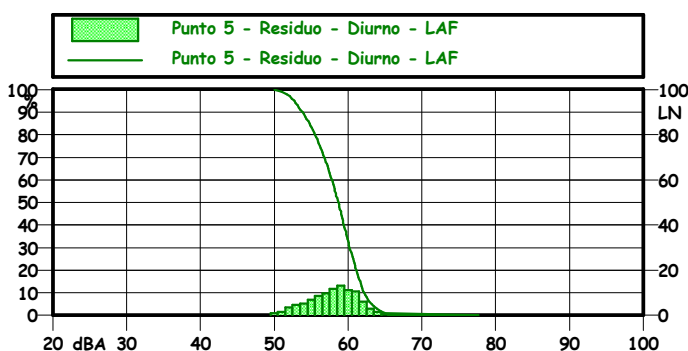
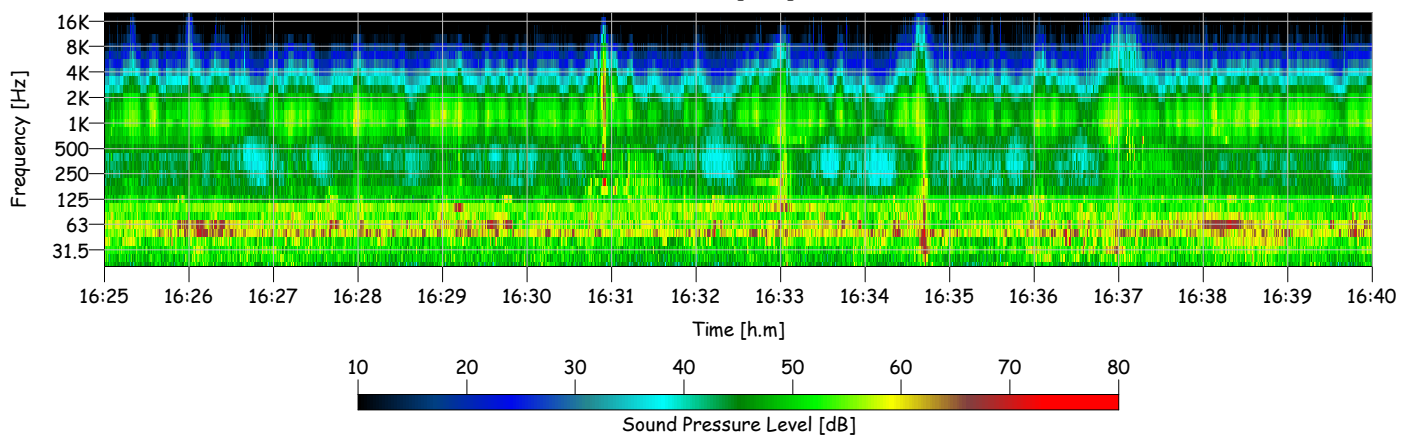
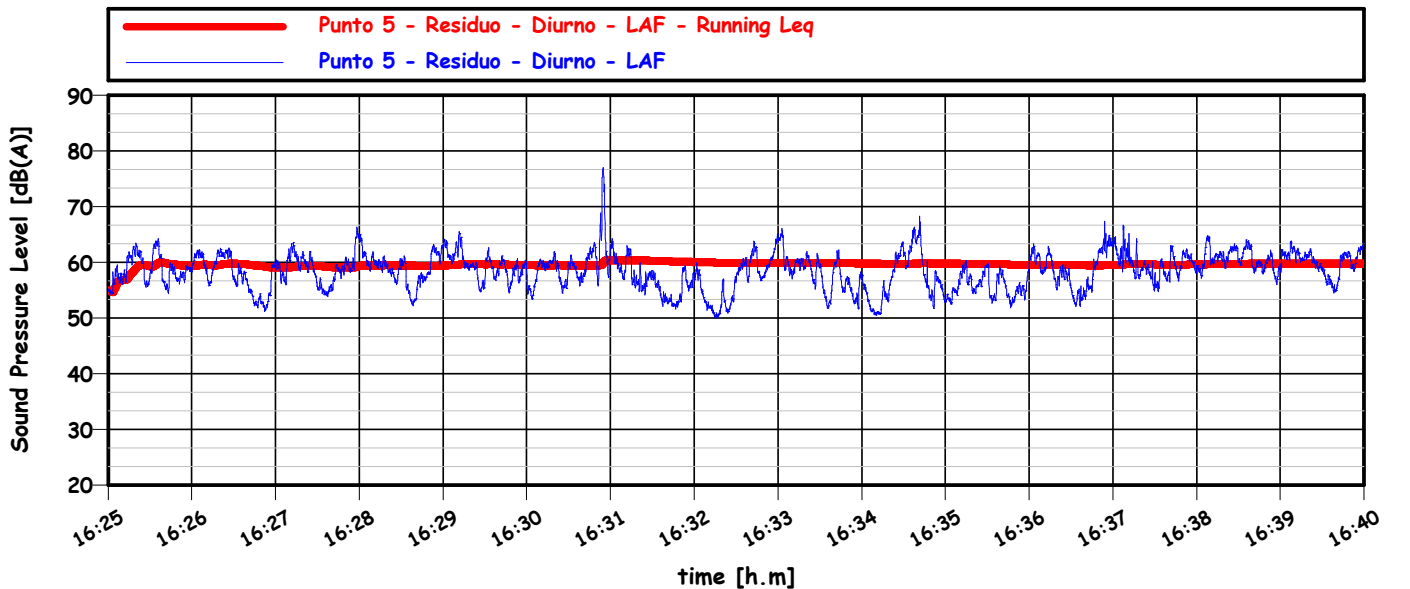
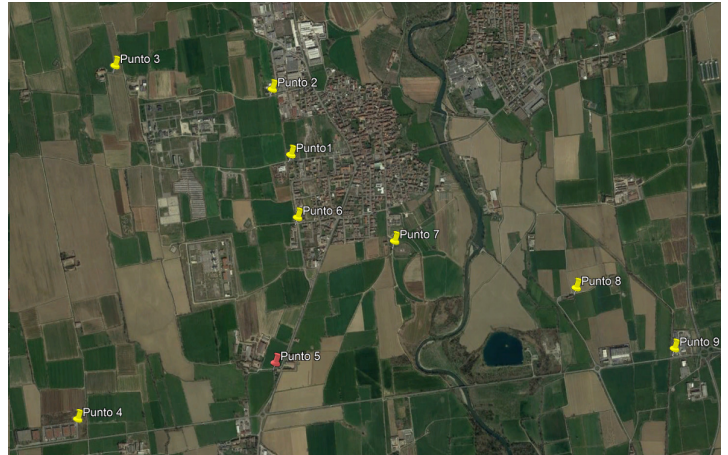
TO: 14.00 - 19.00

TM: 15 min.

LAeq: 59.7 dB

L10: 62.2 dBA
 L50: 58.7 dBA
 L90: 53.8 dBA
 L95: 52.7 dBA

LAFmin: 50.0 dB



STOGIT S.p.A. - Centrale di Sergnano (CR)

Nome misura : Punto 6 - Residuo - Diurno

Località : Sergnano (CR)

Strumentazione : L&D831 - s/n1552

Nome operatore : Ing. Luigi Motta

Data, ora misura : 04/11/2021 16:02:37

Punto 6 - GPS: 45°25'19.73"N,9°41'49.86"E

TR: diurno

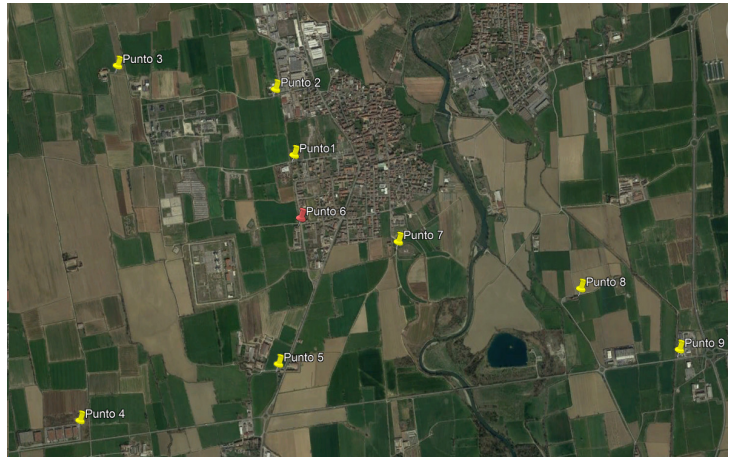
TO: 14.00 - 19.00

TM: 15 min.

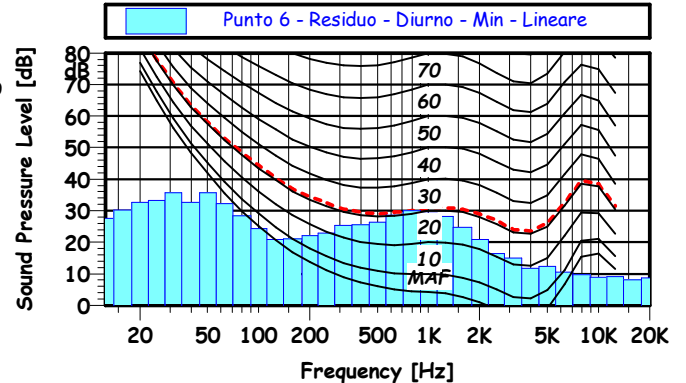
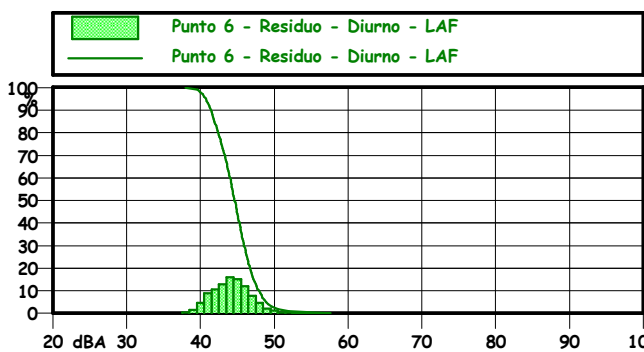
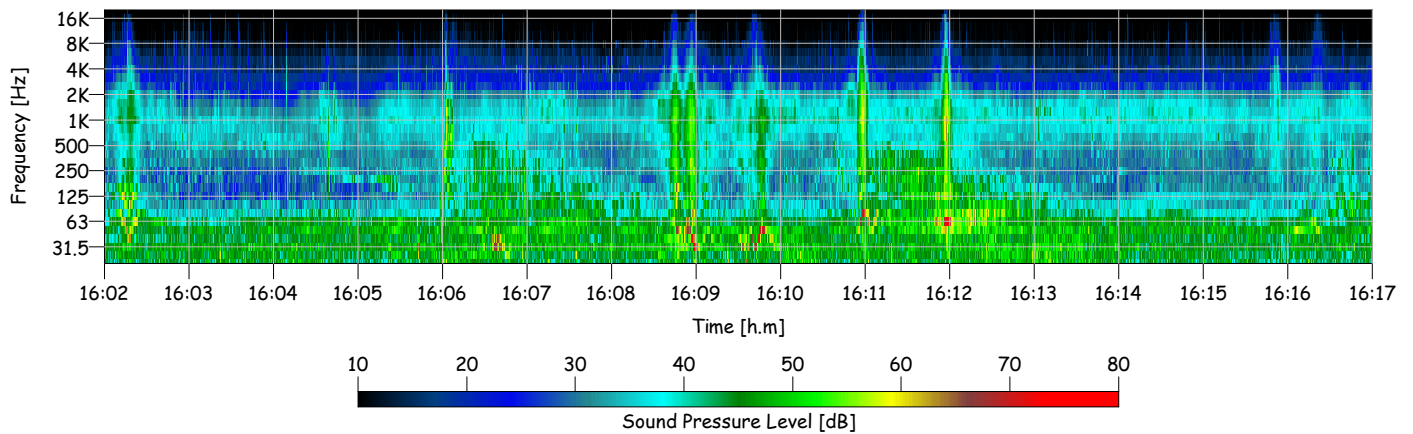
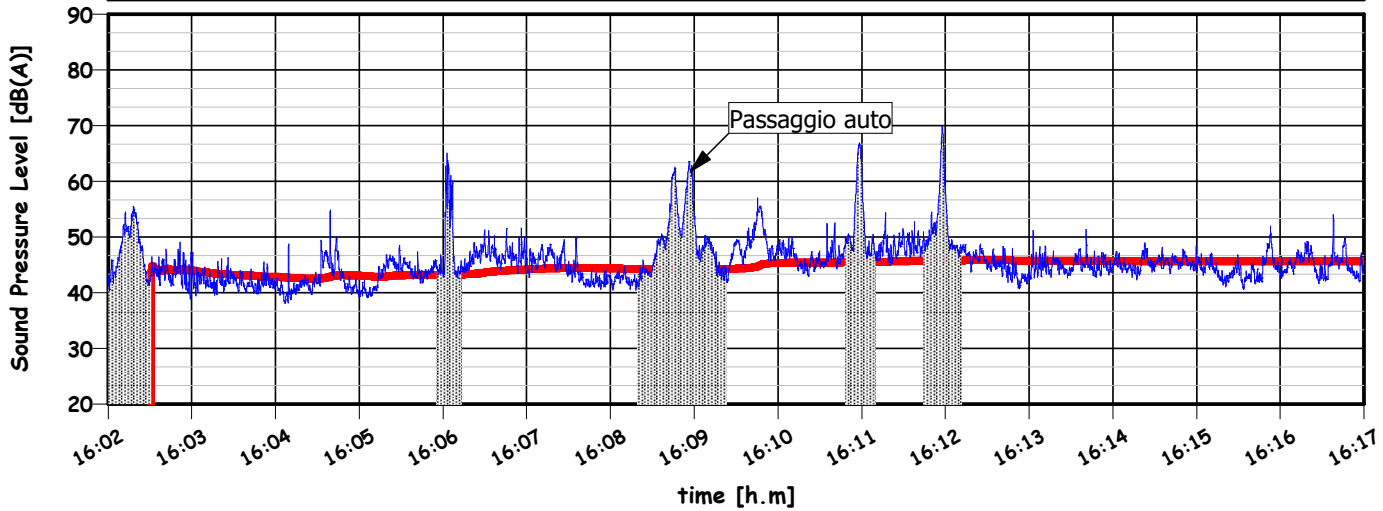
L10: 47.9 dBA
 L50: 44.6 dBA
 L90: 41.4 dBA
 L95: 40.7 dBA

LAeq: 45.6 dB

LAFmin: 38.0 dB



— Punto 6 - Residuo - Diurno - LAF - Running Leq
 — Punto 6 - Residuo - Diurno - LAF



STOGIT S.p.A. - Centrale di Sergnano (CR)

Nome misura : Punto 7 - Residuo - Diurno

Località : Sergnano (CR)

Strumentazione : L&D831 - s/n1552

Nome operatore : Ing. Luigi Motta

Data, ora misura : 04/11/2021 17:15:40

Punto 7 - GPS: 45°25'14.53"N,9°42'20.57"E

TR: diurno

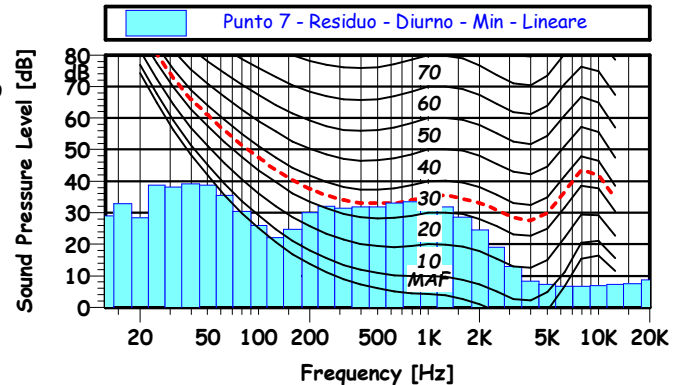
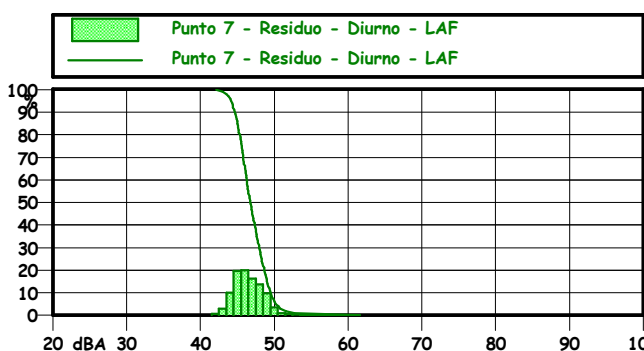
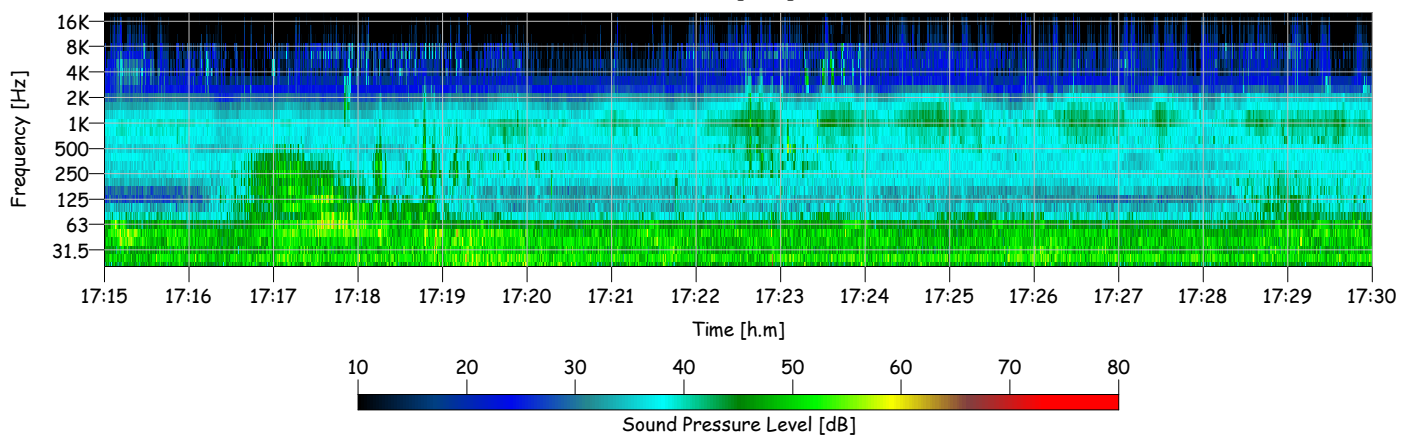
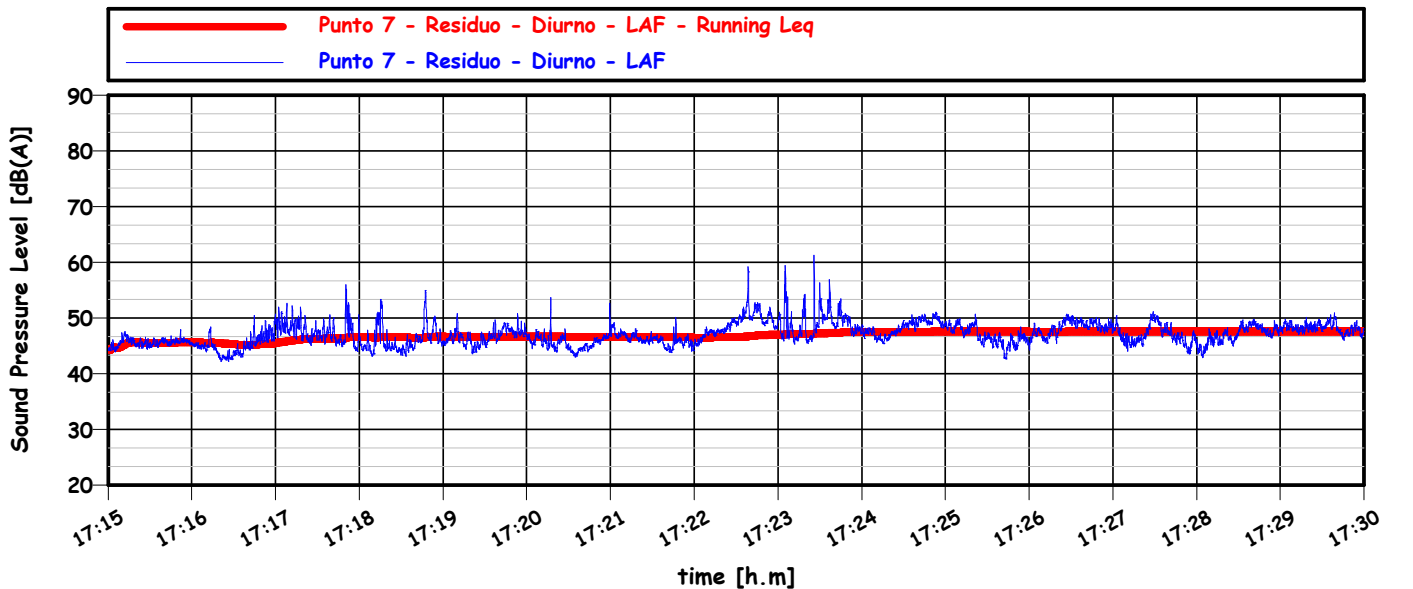
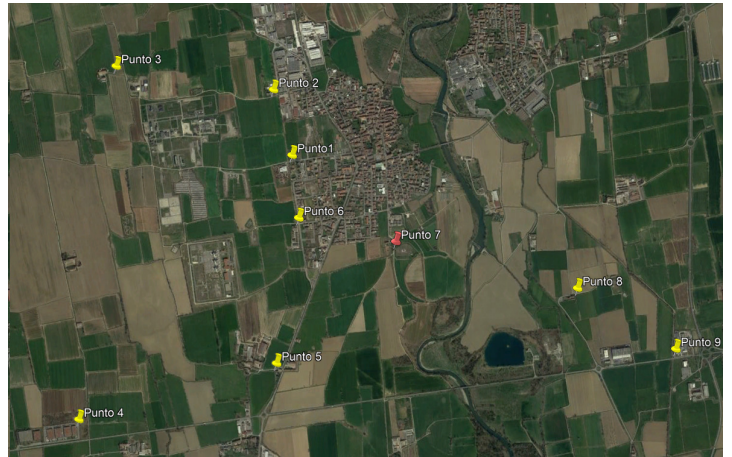
TO: 14.00 - 19.00

TM: 15 min.

L10: 49.5 dBA
 L50: 46.7 dBA
 L90: 44.7 dBA
 L95: 44.1 dBA

LAeq: 47.6 dB

LAFmin: 42.1 dB



STOGIT S.p.A. - Centrale di Sergnano (CR)

Nome misura : Punto 8 - Residuo - Diurno

Località : Sergnano (CR)

Strumentazione : L&D831 - s/n1552

Nome operatore : Ing. Luigi Motta

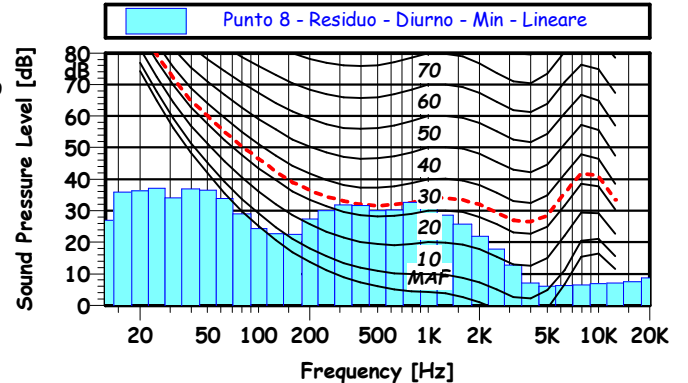
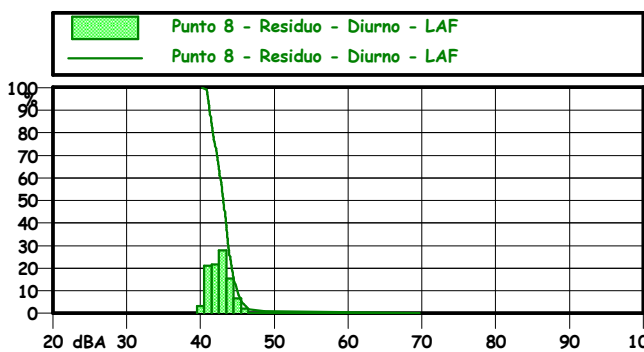
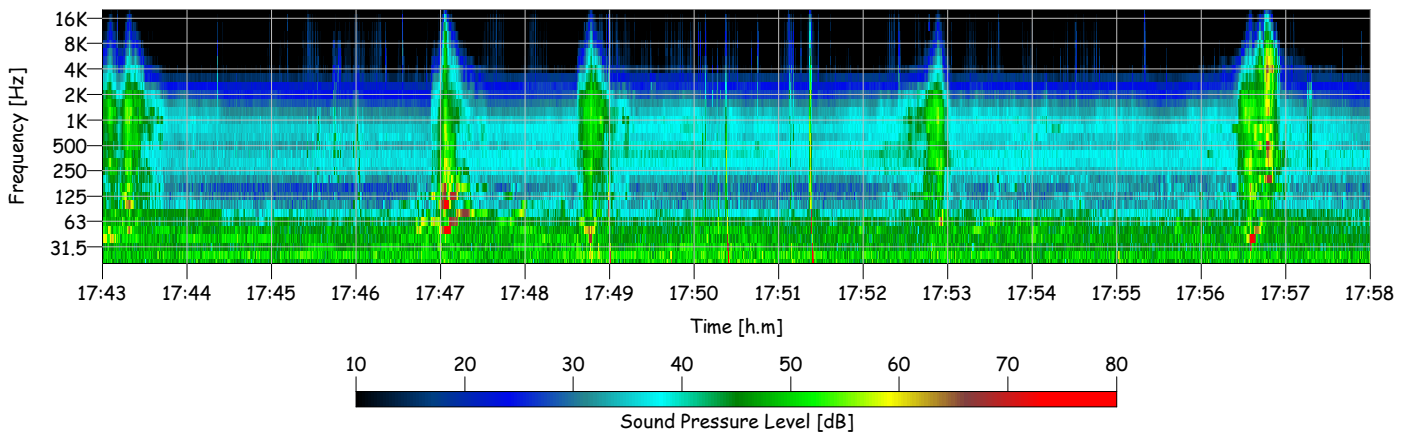
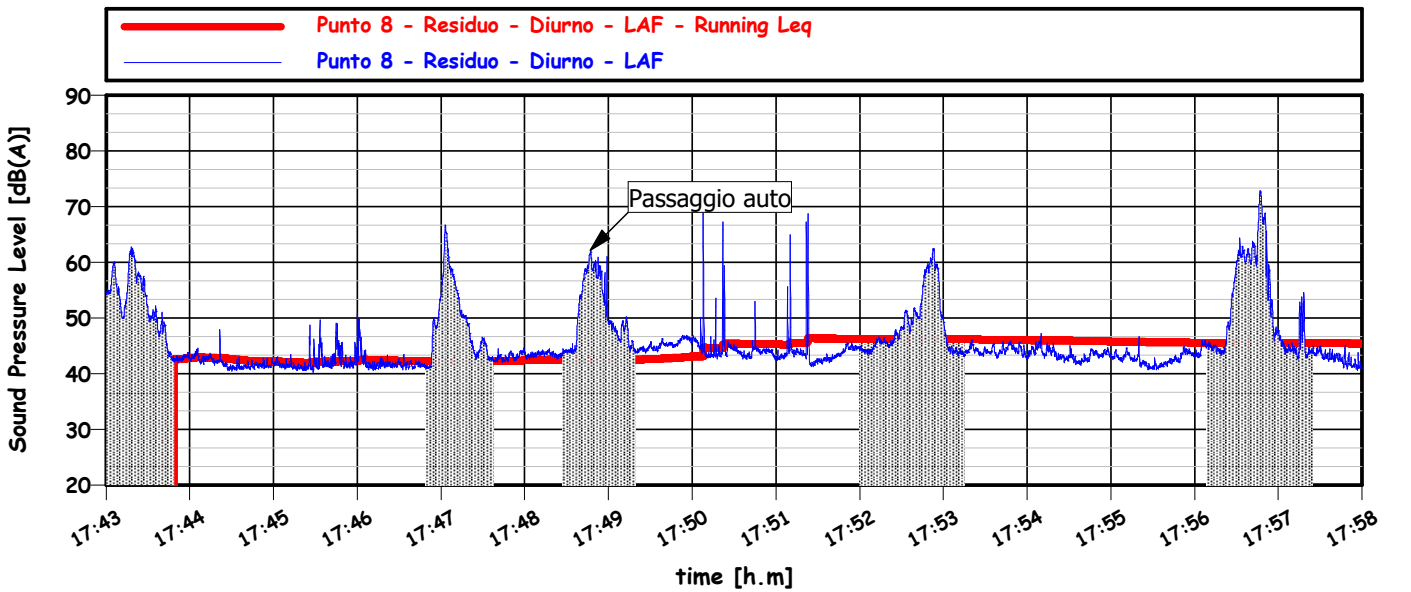
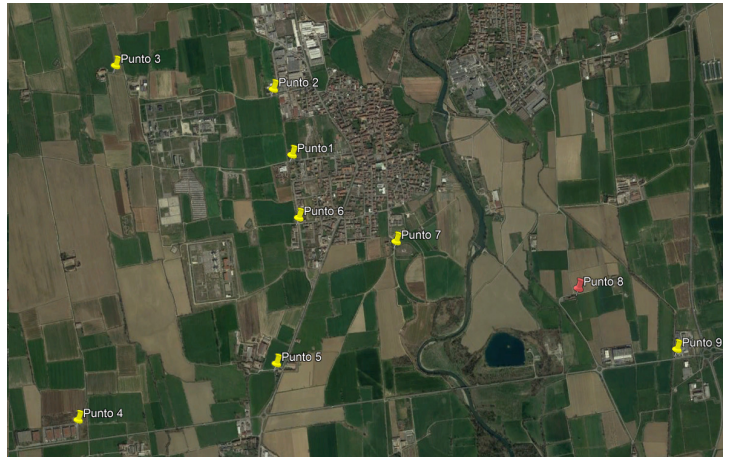
Data, ora misura : 04/11/2021 17:43:35

Punto 8 - GPS: 45°25'4.28"N,9°43'18.04"E

TR: diurno
 TO: 14.00 - 19.00
 TM: 15 min.

L_{Aeq}: 45.4 dB	L10: 45.0 dBA
	L50: 43.1 dBA
	L90: 41.2 dBA
	L95: 41.0 dBA

LAFmin: 40.2 dB



STOGIT S.p.A. - Centrale di Sergnano (CR)

Nome misura : Punto 9 - Residuo - Diurno

Località : Sergnano (CR)

Strumentazione : L&D831 - s/n1552

Nome operatore : Ing. Luigi Motta

Data, ora misura : 04/11/2021 18:06:14

Punto 9 - GPS: 45°24'50.90"N,9°43'49.12"E

TR: diurno

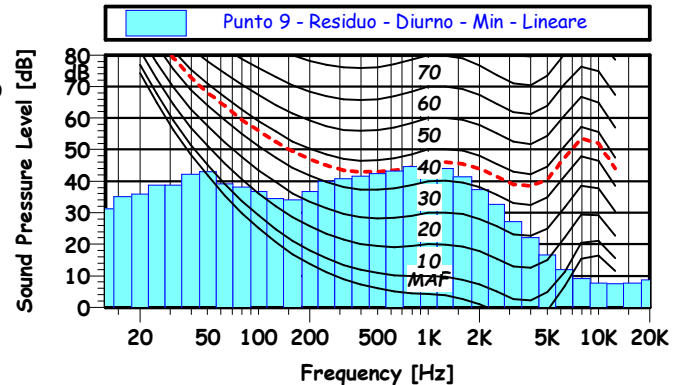
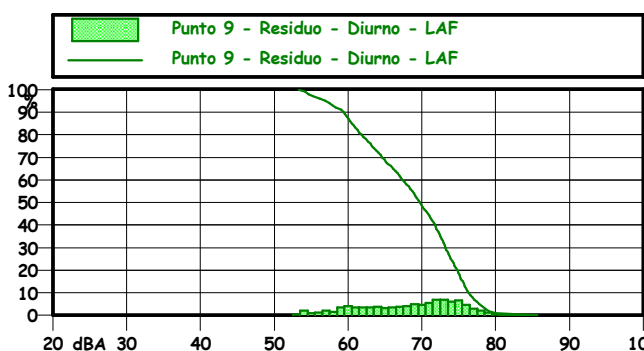
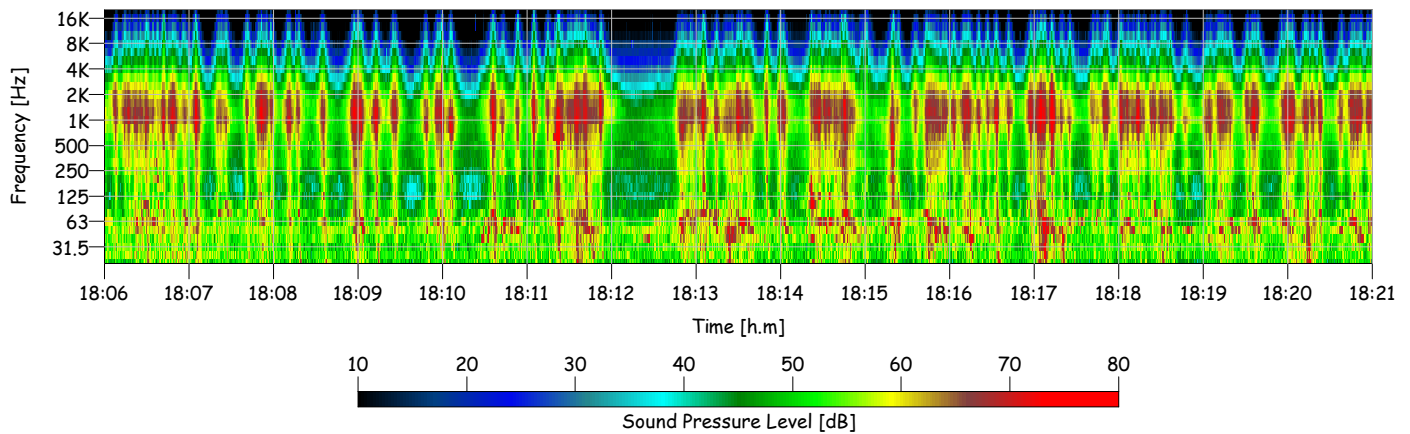
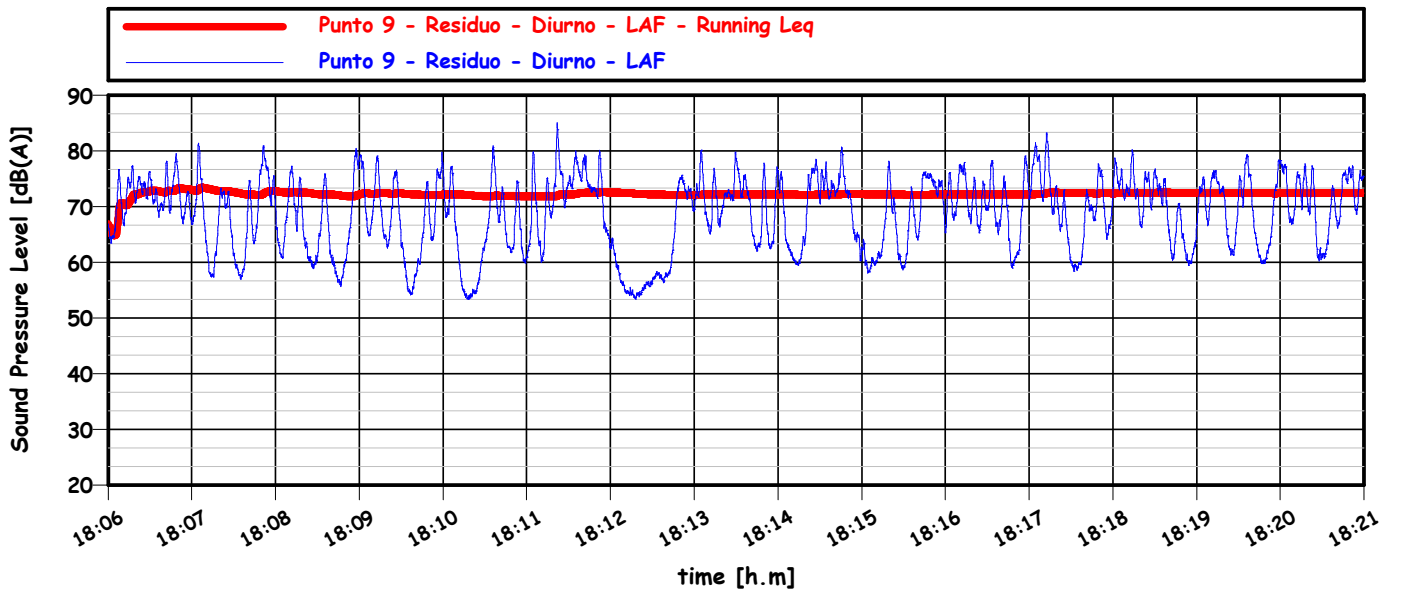
TO: 14.00 - 19.00

TM: 15 min.

L10: 76.3 dBA
 L50: 69.7 dBA
 L90: 59.3 dBA
 L95: 56.9 dBA

LAeq: 72.4 dB

LAFmin: 53.3 dB



STOGIT S.p.A. - Centrale di Sergnano (CR)

Nome misura : Punto 1 - Residuo - Notturmo

Località : Sergnano (CR)

Strumentazione : L&D831 - s/n1552

Nome operatore : Ing. Luigi Motta

Data, ora misura : 04/11/2021 22:00:00

Punto 1 - GPS: 45°25'33.51"N,9°41'47.76"E

TR: notturno

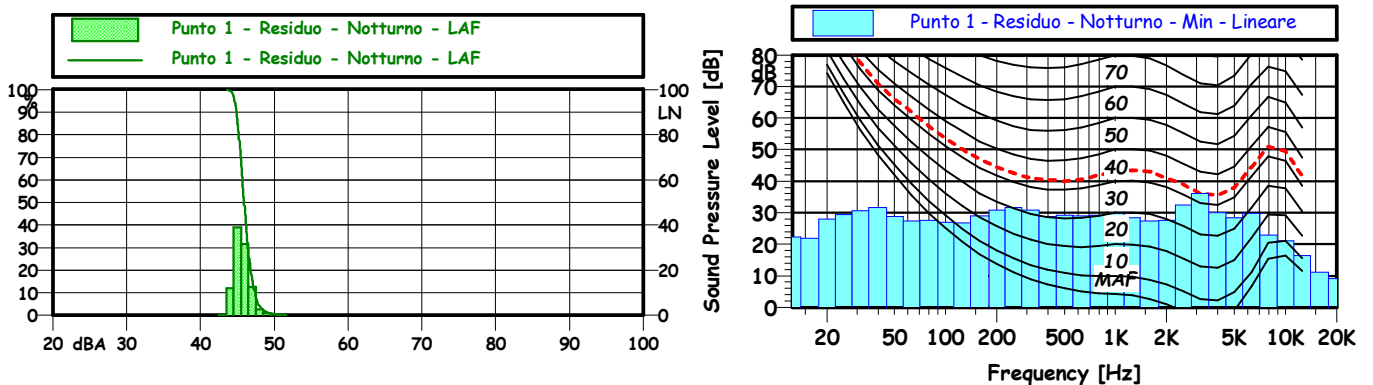
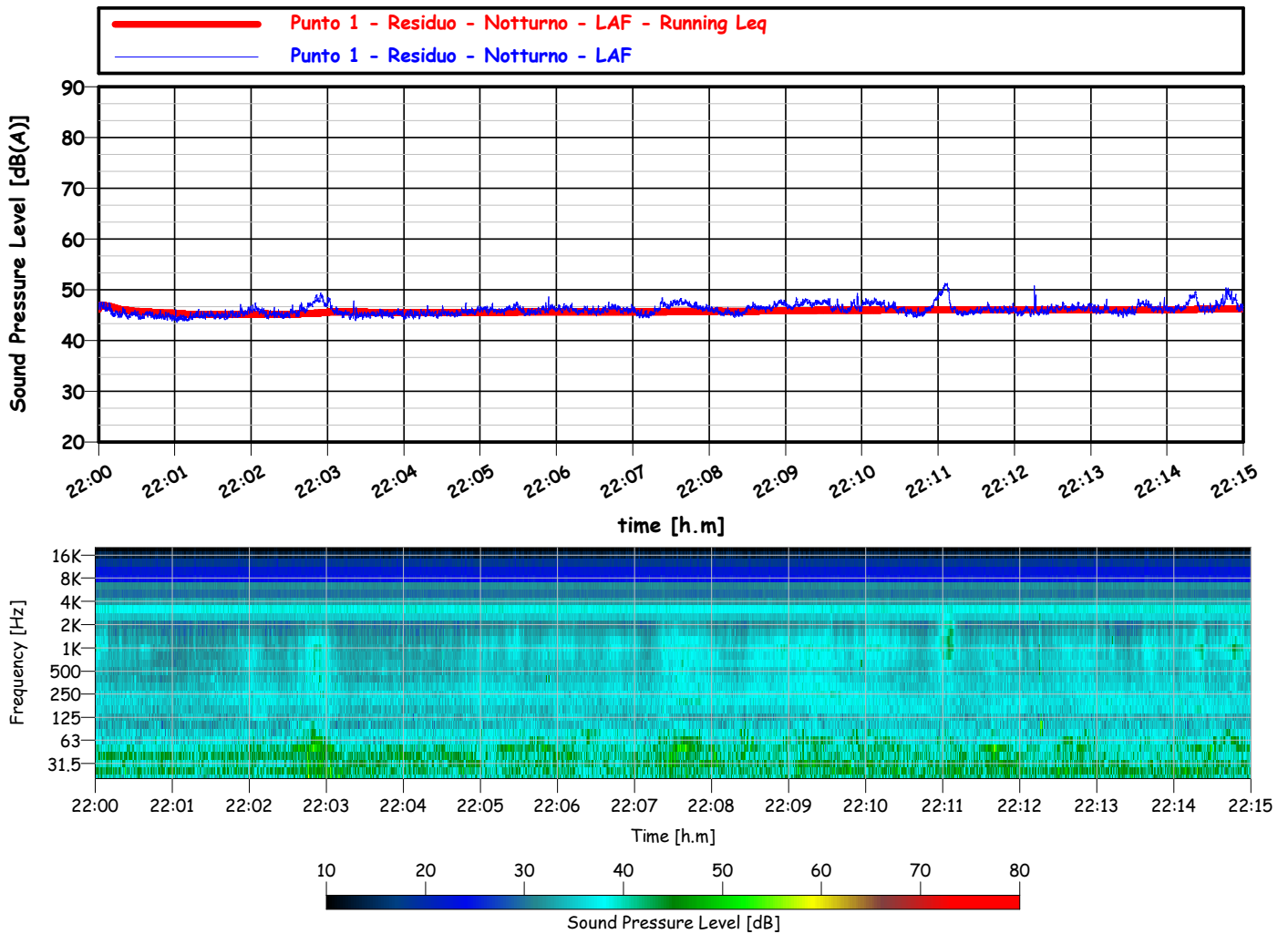
TO: 21.30 - 01.30

TM: 15 min.

L_{Aeq}: 46.2 dB

L10: 47.4 dBA
 L50: 45.9 dBA
 L90: 44.9 dBA
 L95: 44.6 dBA

LAFmin: 43.6 dB



STOGIT S.p.A. - Centrale di Sergnano (CR)

Nome misura : Punto 2 - Residuo - Notturmo

Località : Sergnano (CR)

Strumentazione : L&D831 - s/n1552

Nome operatore : Ing. Luigi Motta

Data, ora misura : 04/11/2021 22:20:32

Punto 2 - GPS: 45°25'47.92"N,9°41'41.89"E

TR: notturno

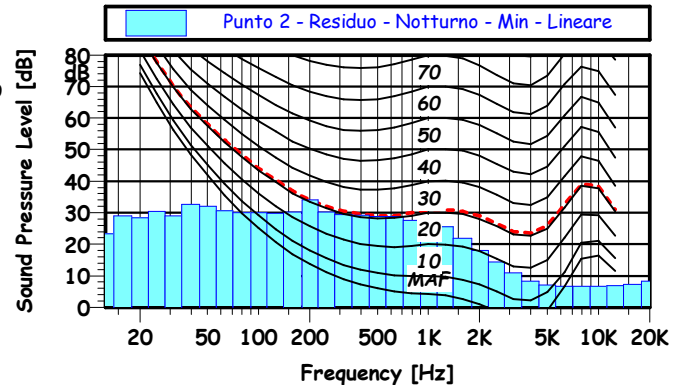
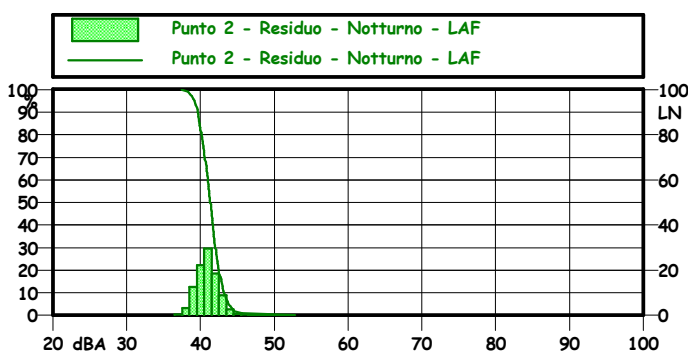
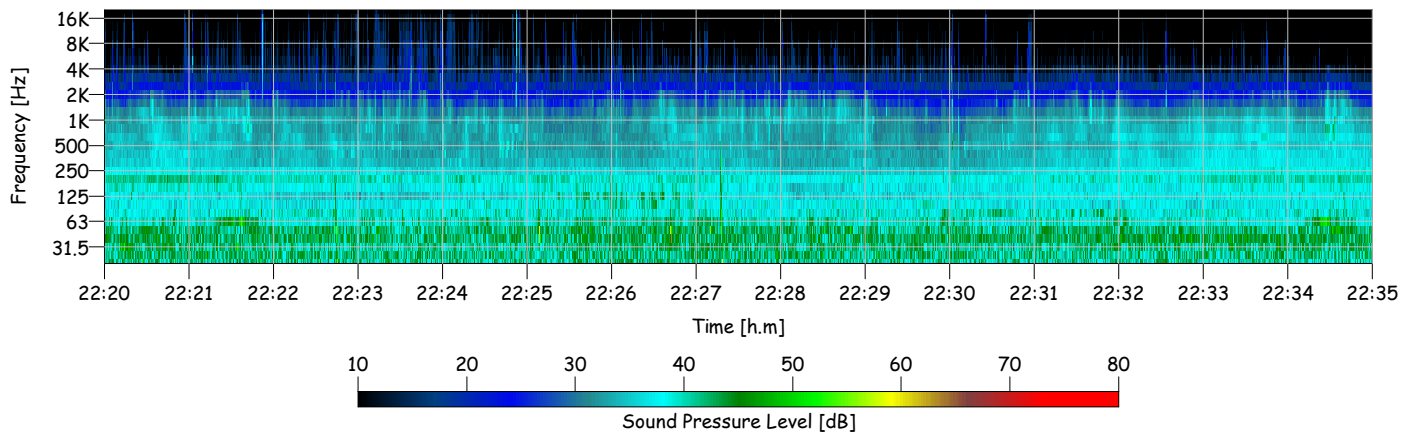
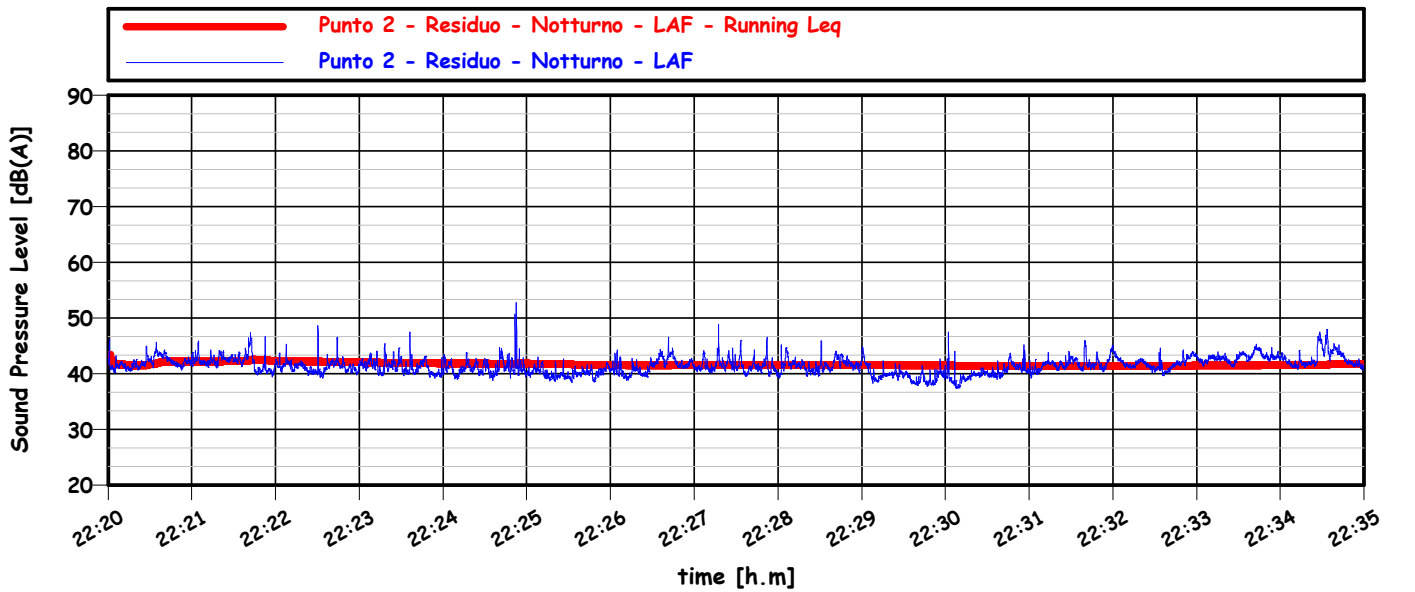
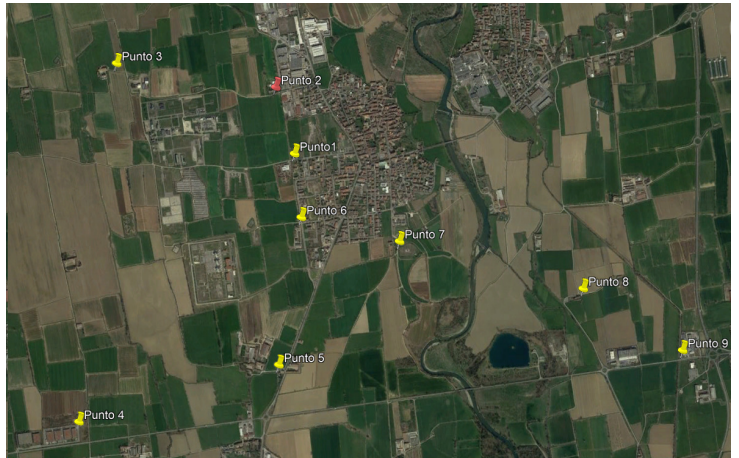
TO: 21.30 - 01.30

TM: 15 min.

L_{Aeq}: 41.7 dB

L10: 43.2 dBA
 L50: 41.3 dBA
 L90: 39.6 dBA
 L95: 39.2 dBA

LAFmin: 37.4 dB



STOGIT S.p.A. - Centrale di Sergnano (CR)

Nome misura : Punto 3 - Residuo - Notturmo

Località : Sergnano (CR)

Strumentazione : L&D831 - s/n1552

Nome operatore : Ing. Luigi Motta

Data, ora misura : 04/11/2021 22:42:01

Punto 3 - GPS: 45°25'53.09"N,9°40'52.12"E

TR: notturno

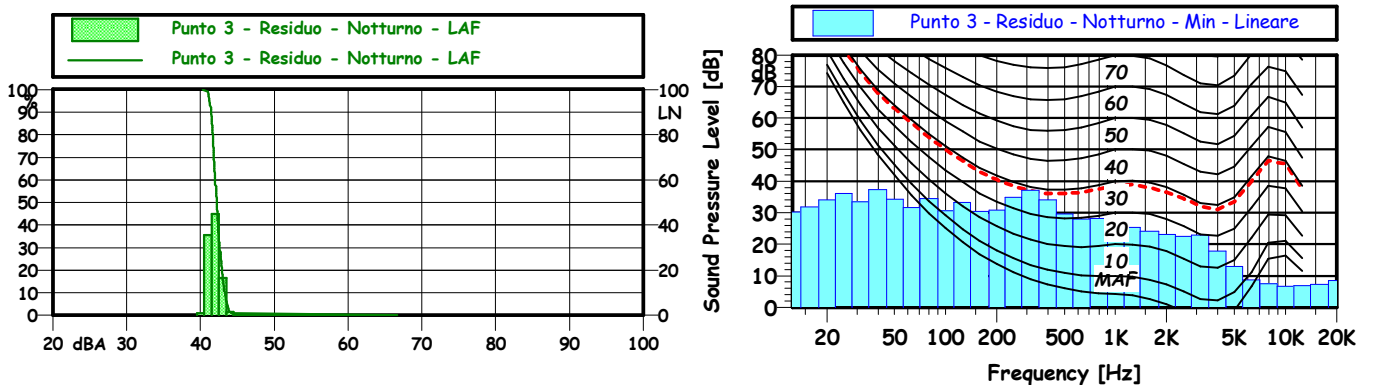
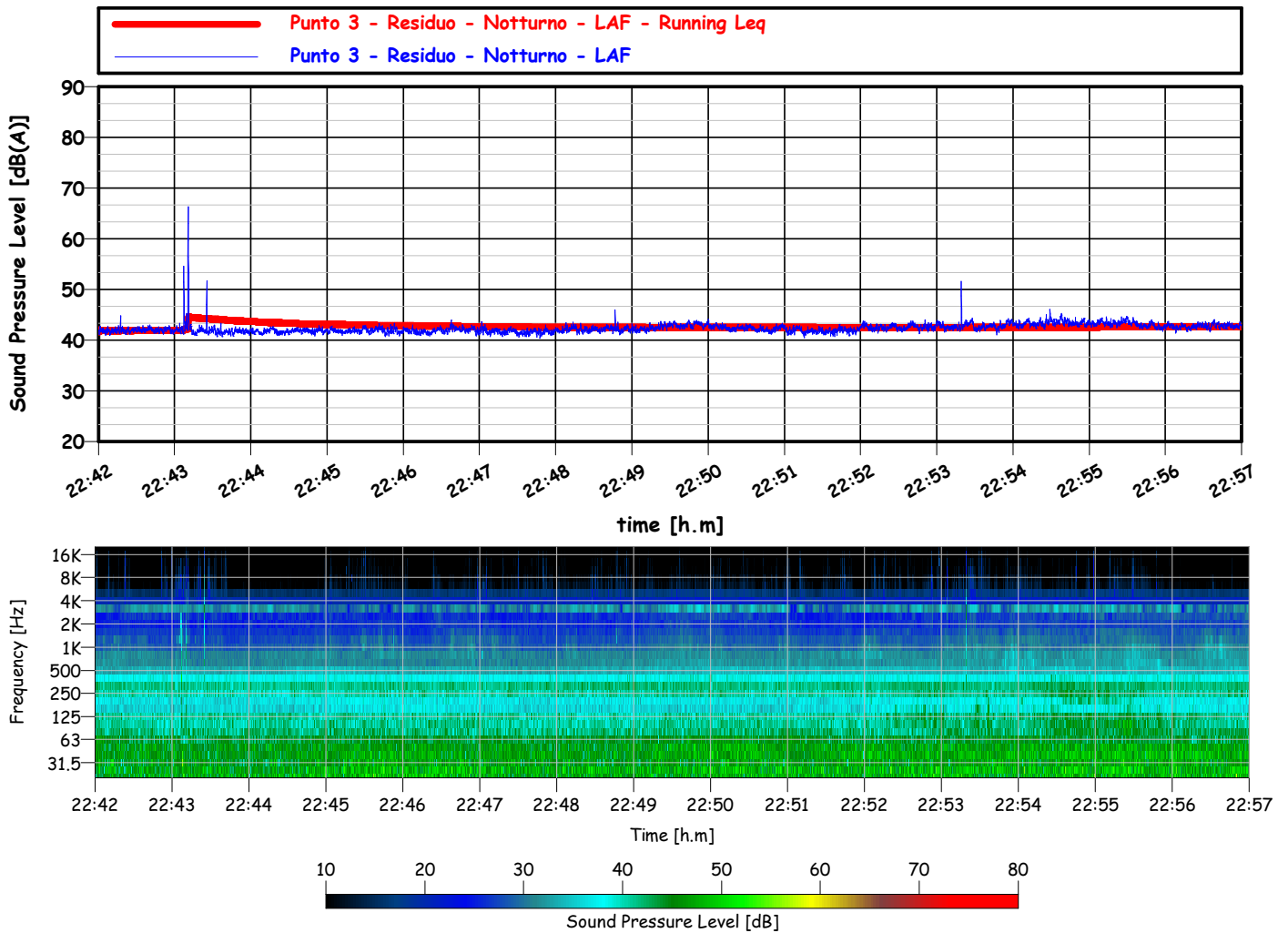
TO: 21.30 - 01.30

TM: 15 min.

L_{Aeq}: 42.6 dB

L10: 43.3 dBA
 L50: 42.2 dBA
 L90: 41.4 dBA
 L95: 41.2 dBA

LAFmin: 40.3 dB



STOGIT S.p.A. - Centrale di Sergnano (CR)

Nome misura : Punto 4 - Residuo - Notturmo

Località : Sergnano (CR)

Strumentazione : L&D831 - s/n1552

Nome operatore : Ing. Luigi Motta

Data, ora misura : 05/11/2021 00:11:24

Punto 4 - GPS: 45°24'35.39"N,9°40'40.26"E

TR: notturno

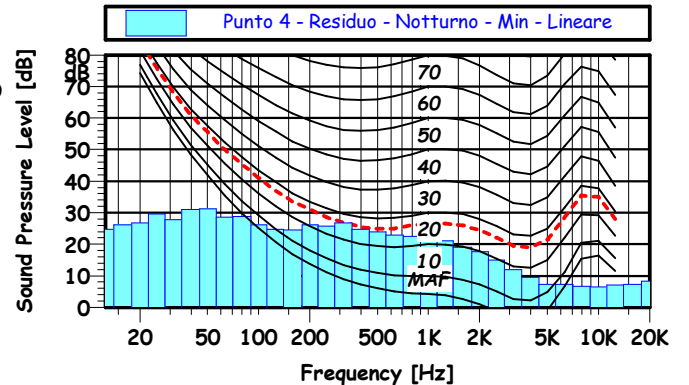
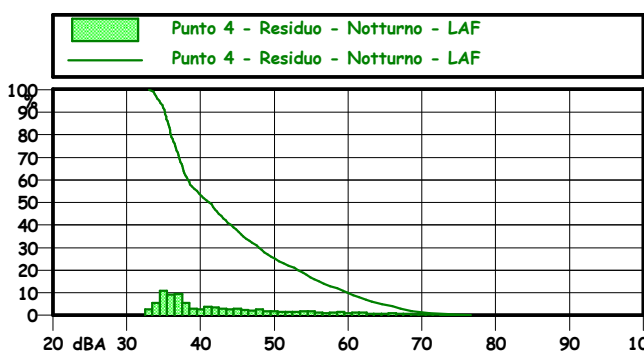
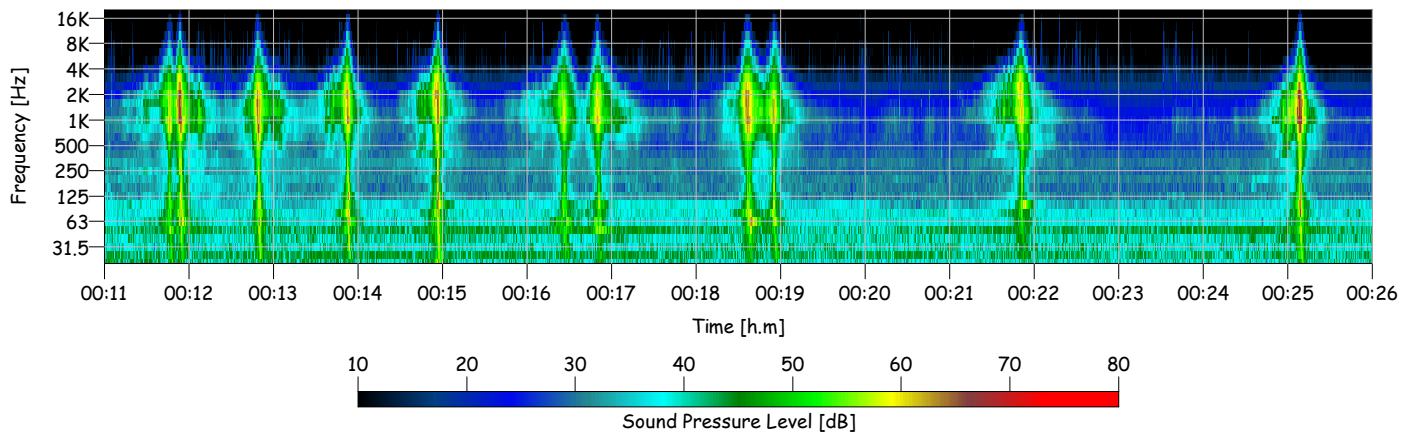
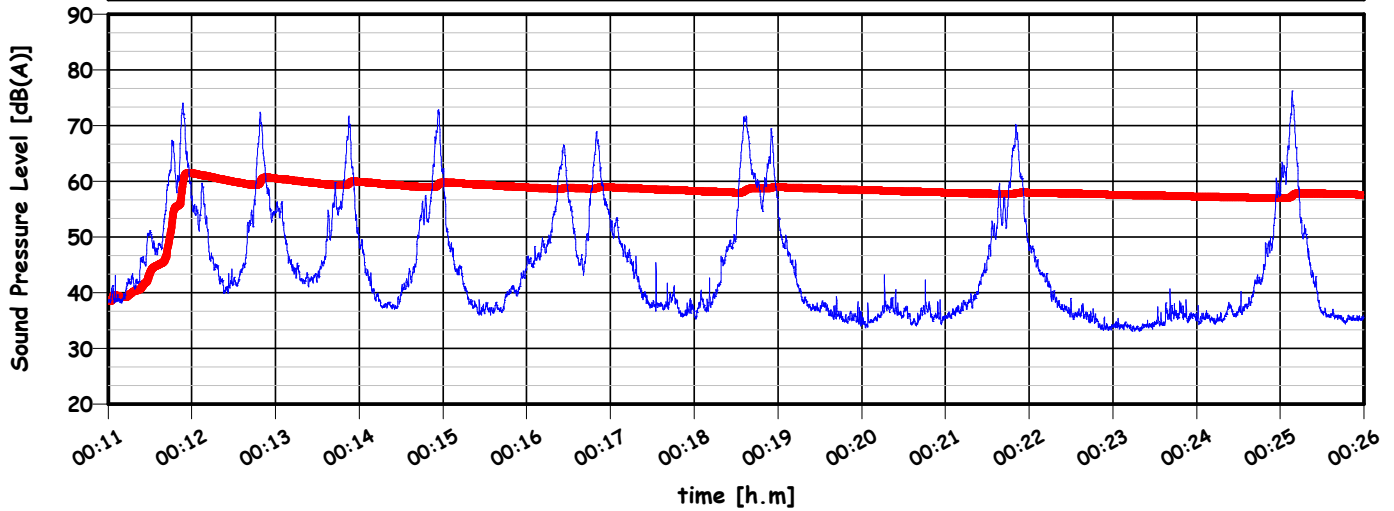
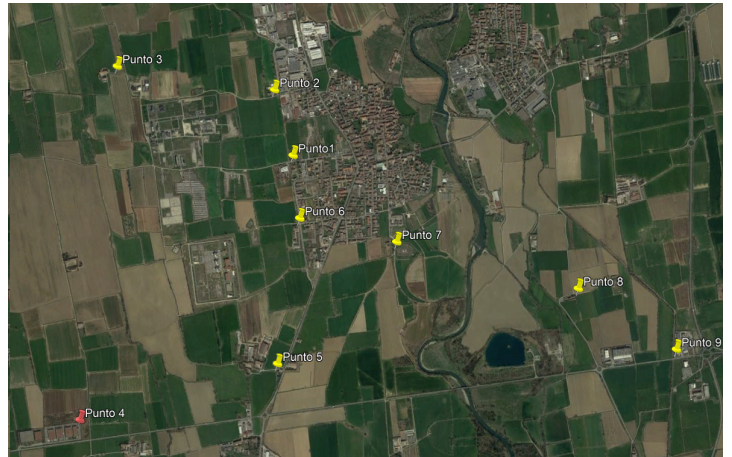
TO: 21.30 - 01.30

TM: 15 min.

L10: 59.9 dBA
 L50: 41.2 dBA
 L90: 35.2 dBA
 L95: 34.4 dBA

LAeq: 57.6 dB

LAFmin: 33.0 dB



STOGIT S.p.A. - Centrale di Sergnano (CR)

Nome misura : Punto 5 - Residuo - Notturmo

Località : Sergnano (CR)

Strumentazione : L&D831 - s/n1552

Nome operatore : Ing. Luigi Motta

Data, ora misura : 04/11/2021 23:50:02

Punto 5 - GPS: 45°24'47.76"N,9°41'42.83"E

TR: notturno

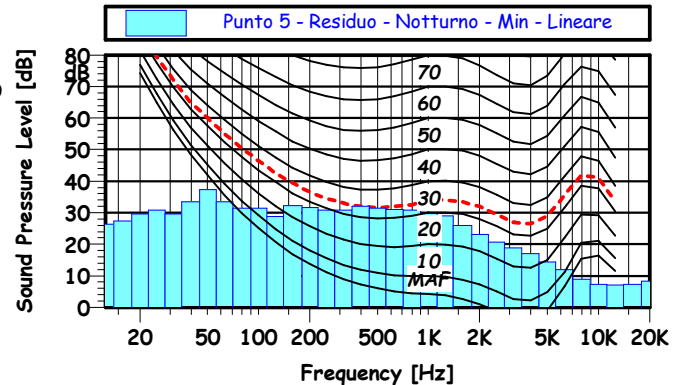
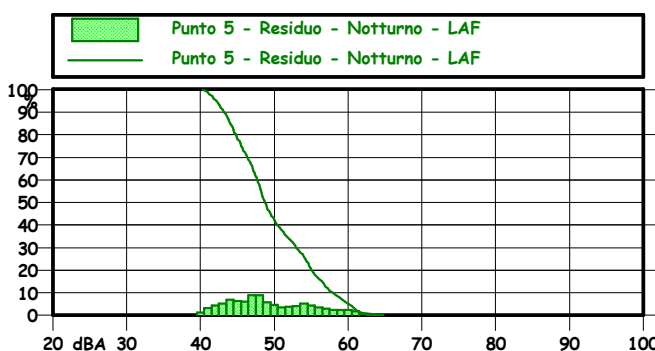
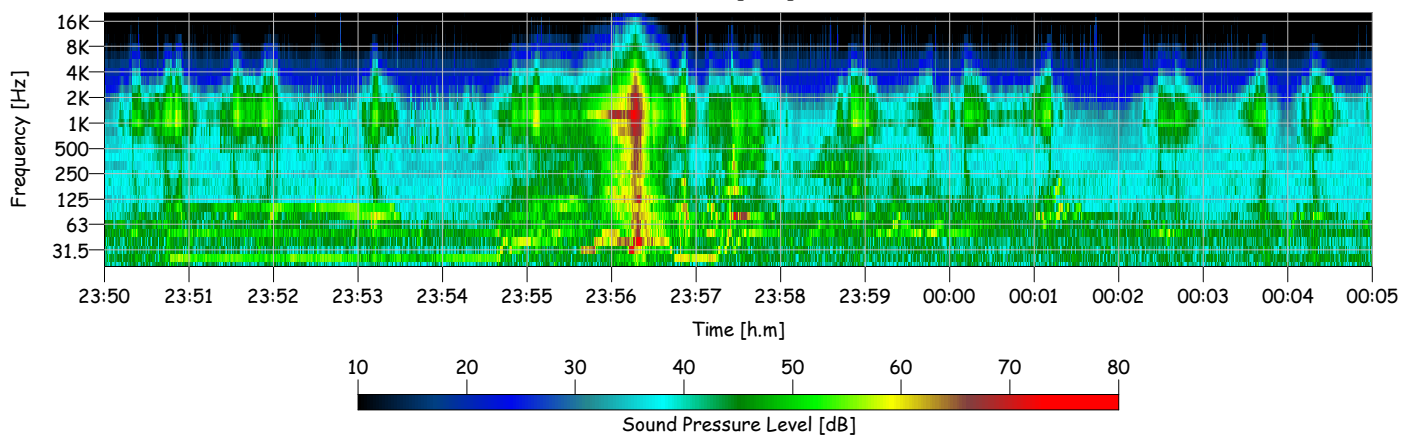
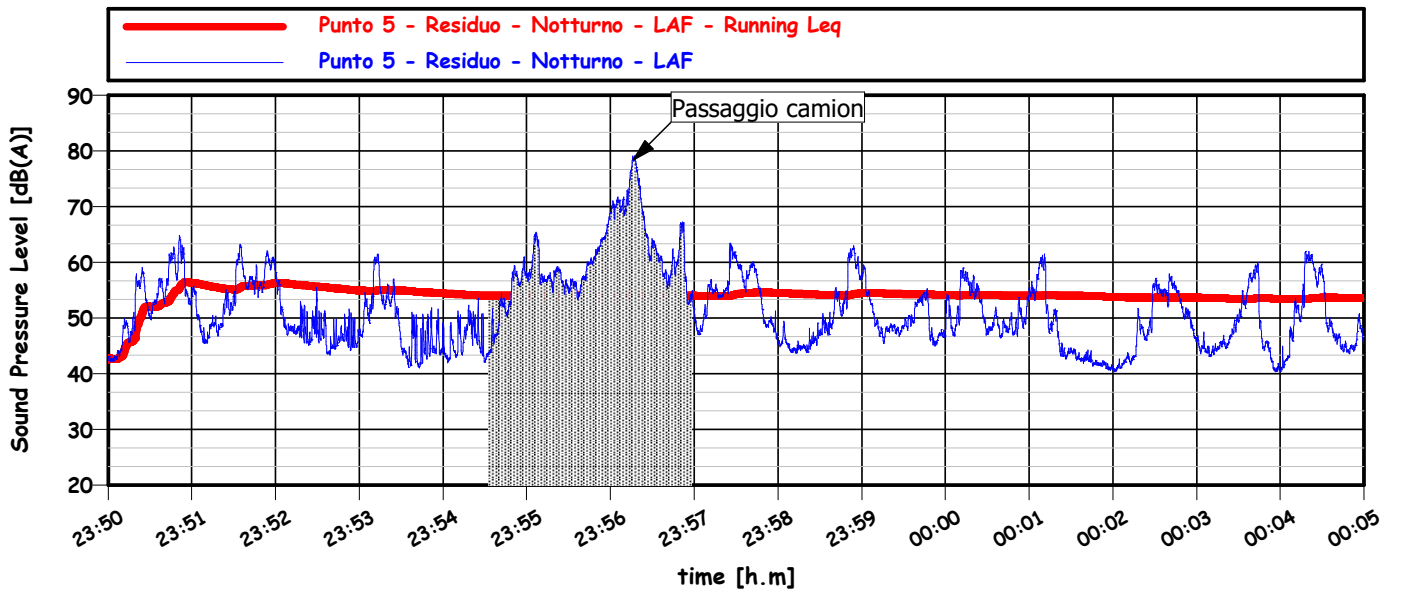
TO: 21.30 - 01.30

TM: 15 min.

LAeq: 53.5 dB

L10: 57.9 dBA
 L50: 48.7 dBA
 L90: 43.2 dBA
 L95: 42.1 dBA

LAFmin: 40.3 dB



STOGIT S.p.A. - Centrale di Sergnano (CR)

Nome misura : Punto 6 - Residuo - Notturmo

Località : Sergnano (CR)

Strumentazione : L&D831 - s/n1552

Nome operatore : Ing. Luigi Motta

Data, ora misura : 04/11/2021 23:06:09

Punto 6 - GPS: 45°25'19.73"N,9°41'49.86"E

TR: notturno

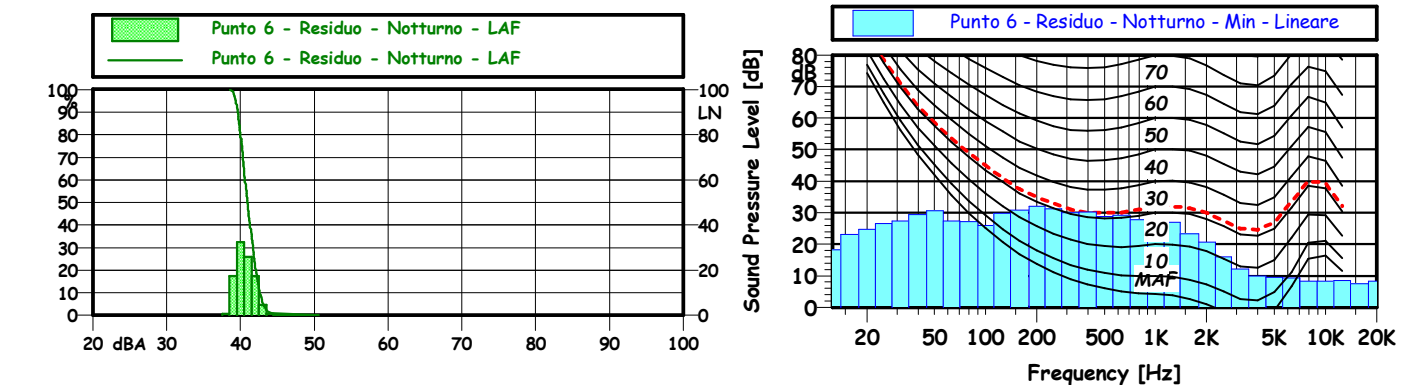
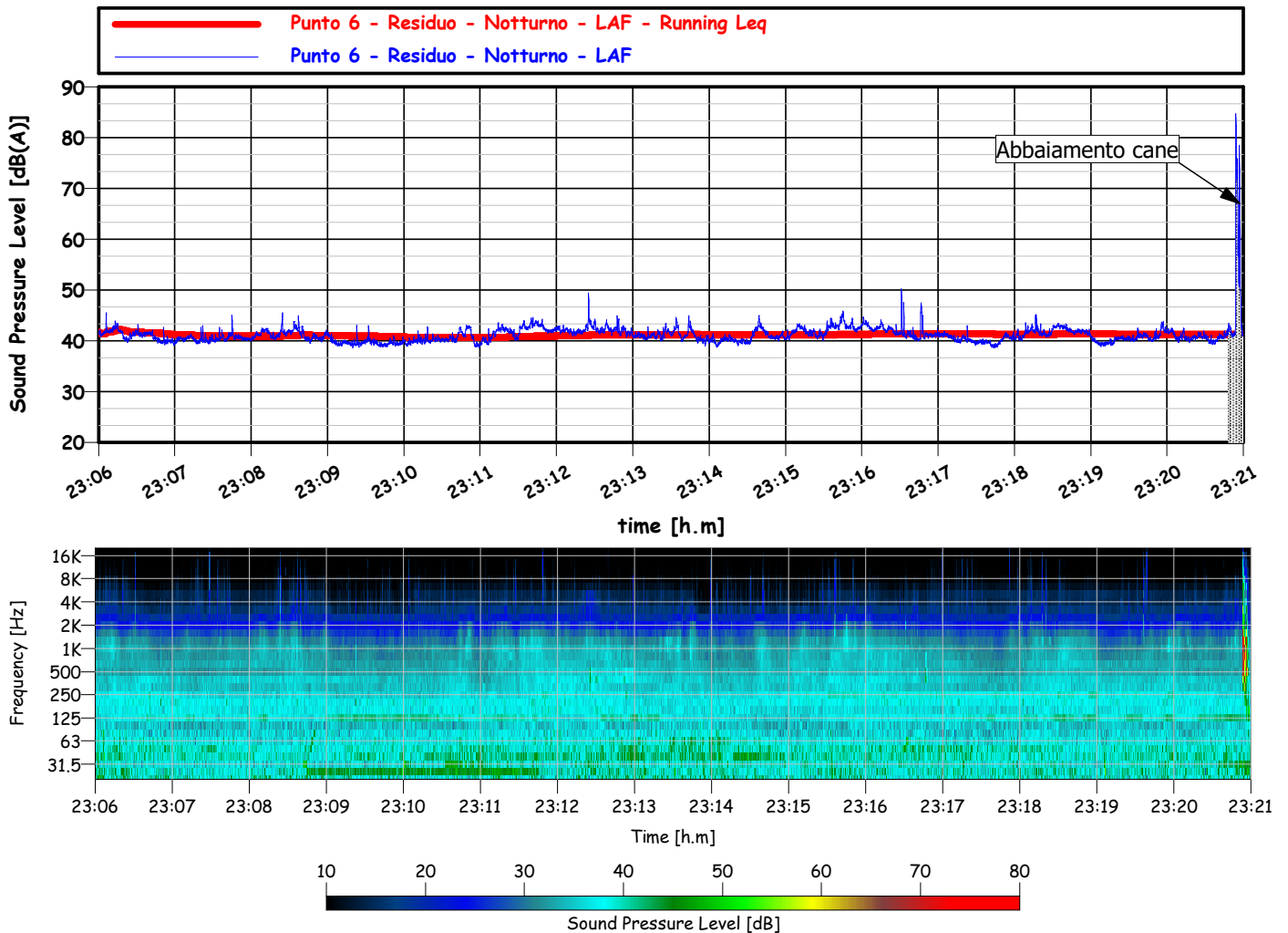
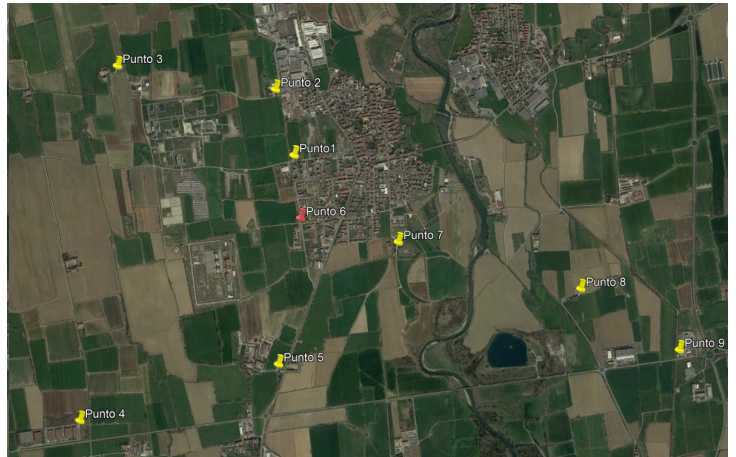
TO: 21.30 - 01.30

TM: 15 min.

L_{Aeq}: 41.2 dB

L10: 42.6 dBA
 L50: 40.9 dBA
 L90: 39.6 dBA
 L95: 39.4 dBA

LAFmin: 38.6 dB



STOGIT S.p.A. - Centrale di Sergnano (CR)

Nome misura : Punto 7 - Residuo - Notturmo

Località : Sergnano (CR)

Strumentazione : L&D831 - s/n1552

Nome operatore : Ing. Luigi Motta

Data, ora misura : 04/11/2021 23:27:45

Punto 7 - GPS: 45°25'14.53"N,9°42'20.57"E

TR: notturno

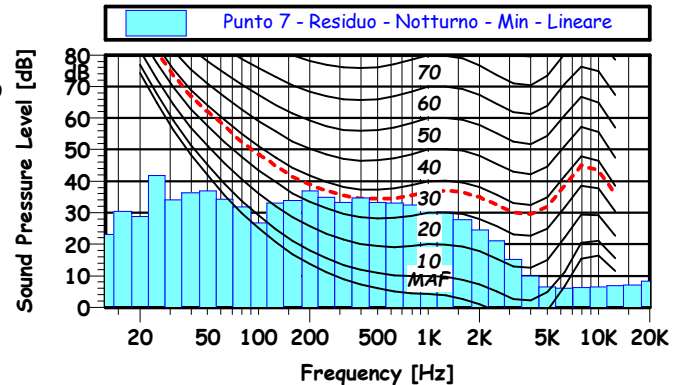
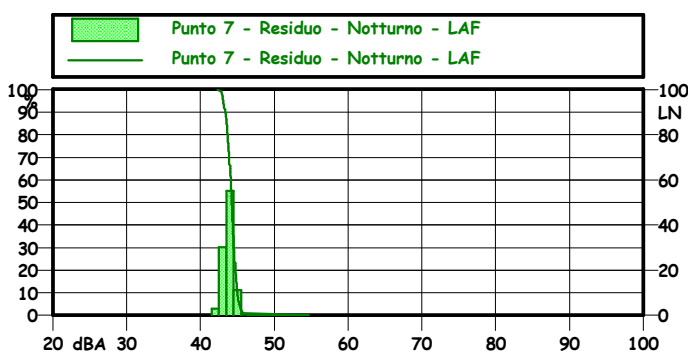
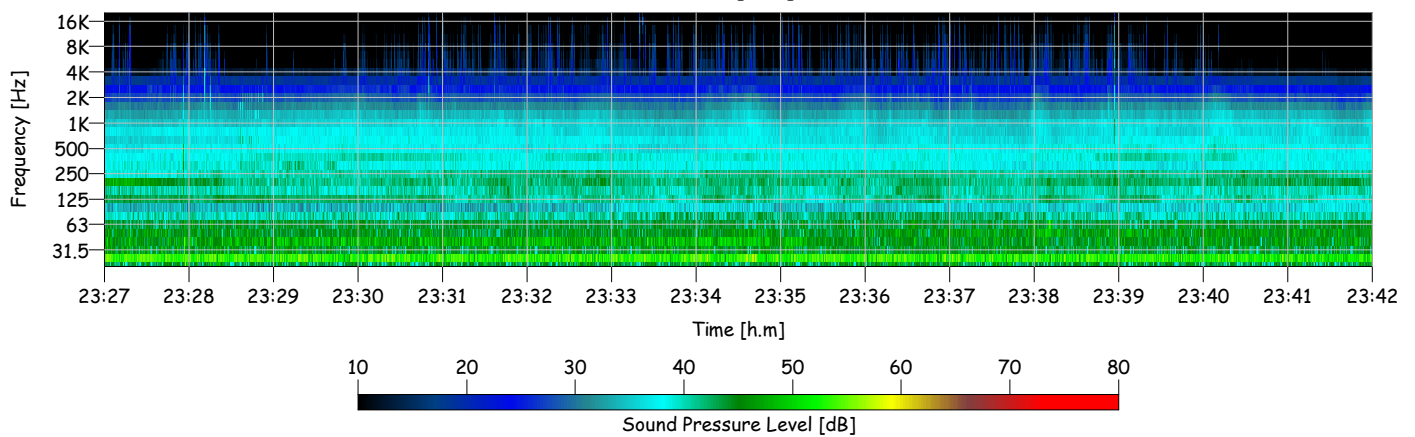
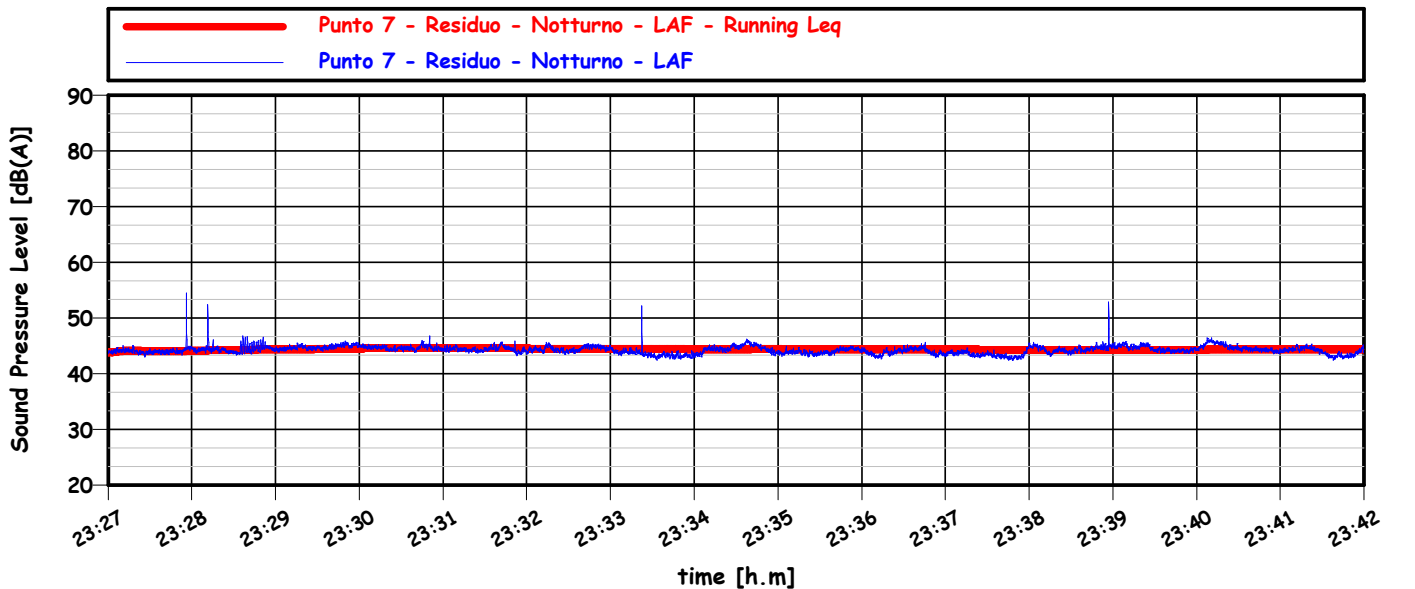
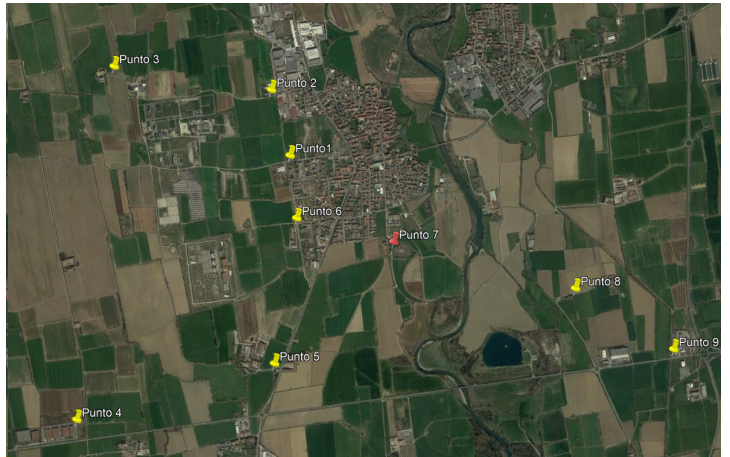
TO: 21.30 - 01.30

TM: 15 min.

L_{Aeq}: 44.3 dB

L10: 45.0 dBA
 L50: 44.2 dBA
 L90: 43.3 dBA
 L95: 43.1 dBA

LAFmin: 42.3 dB



STOGIT S.p.A. - Centrale di Sergnano (CR)

Nome misura : Punto 8 - Residuo - Notturmo

Località : Sergnano (CR)

Strumentazione : L&D831 - s/n1552

Nome operatore : Ing. Luigi Motta

Data, ora misura : 05/11/2021 00:35:17

Punto 8 - GPS: 45°25'4.28"N,9°43'18.04"E

TR: notturno

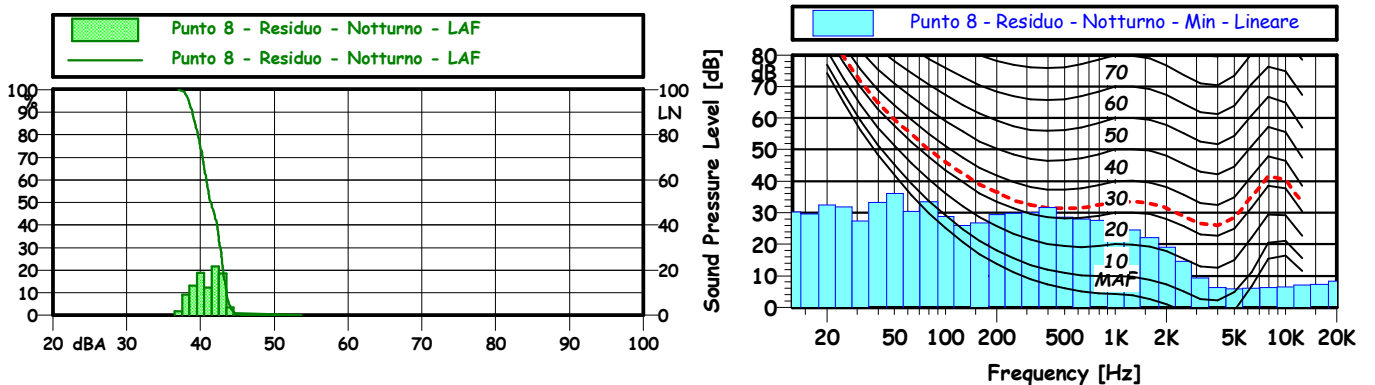
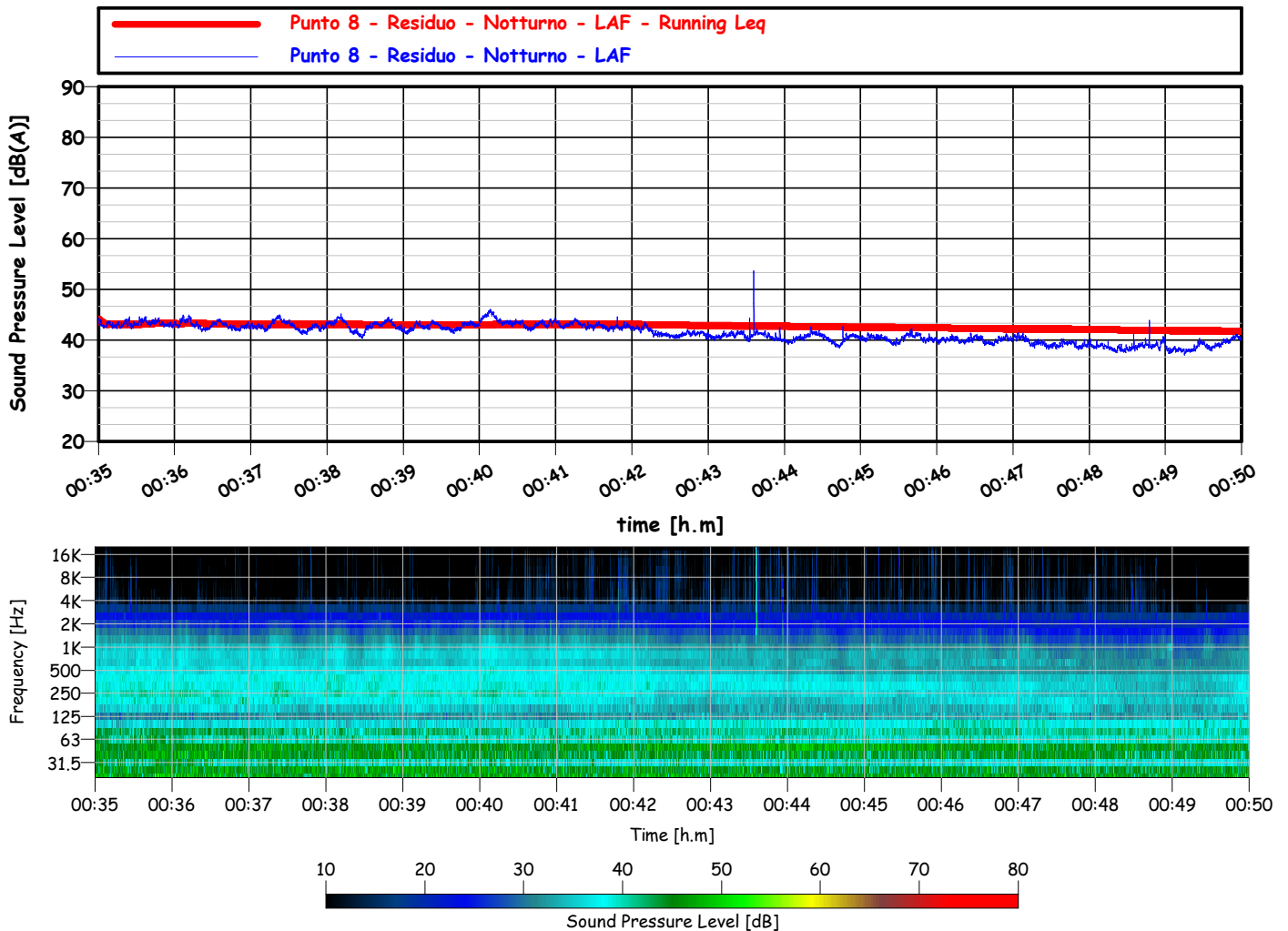
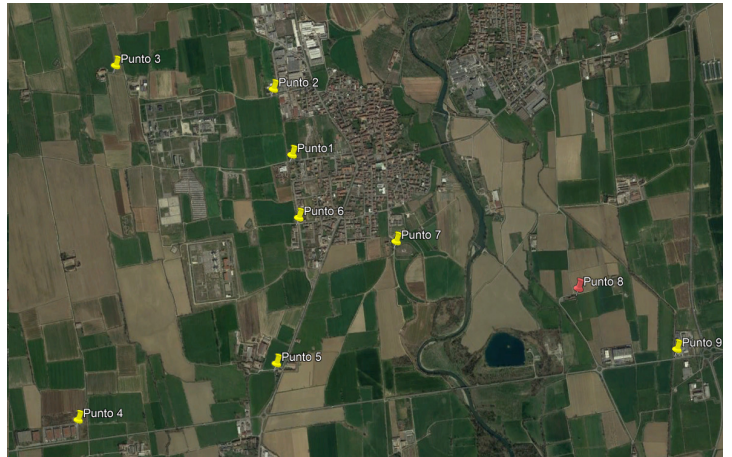
TO: 21.30 - 01.30

TM: 15 min.

L_{Aeq}: 41.7 dB

L10: 43.5 dBA
 L50: 41.4 dBA
 L90: 38.9 dBA
 L95: 38.4 dBA

LAFmin: 37.0 dB



STOGIT S.p.A. - Centrale di Sergnano (CR)

Nome misura : Punto 9 - Residuo - Notturmo

Località : Sergnano (CR)

Strumentazione : L&D831 - s/n1552

Nome operatore : Ing. Luigi Motta

Data, ora misura : 05/11/2021 00:56:43

Punto 9 - GPS: 45°24'50.90"N,9°43'49.12"E

TR: notturno

TO: 21.30 - 01.30

TM: 15 min.

LAeq: 40.7 dB

L10: 43.3 dBA
 L50: 39.5 dBA
 L90: 37.3 dBA
 L95: 36.9 dBA

LAFmin: 35.9 dB

