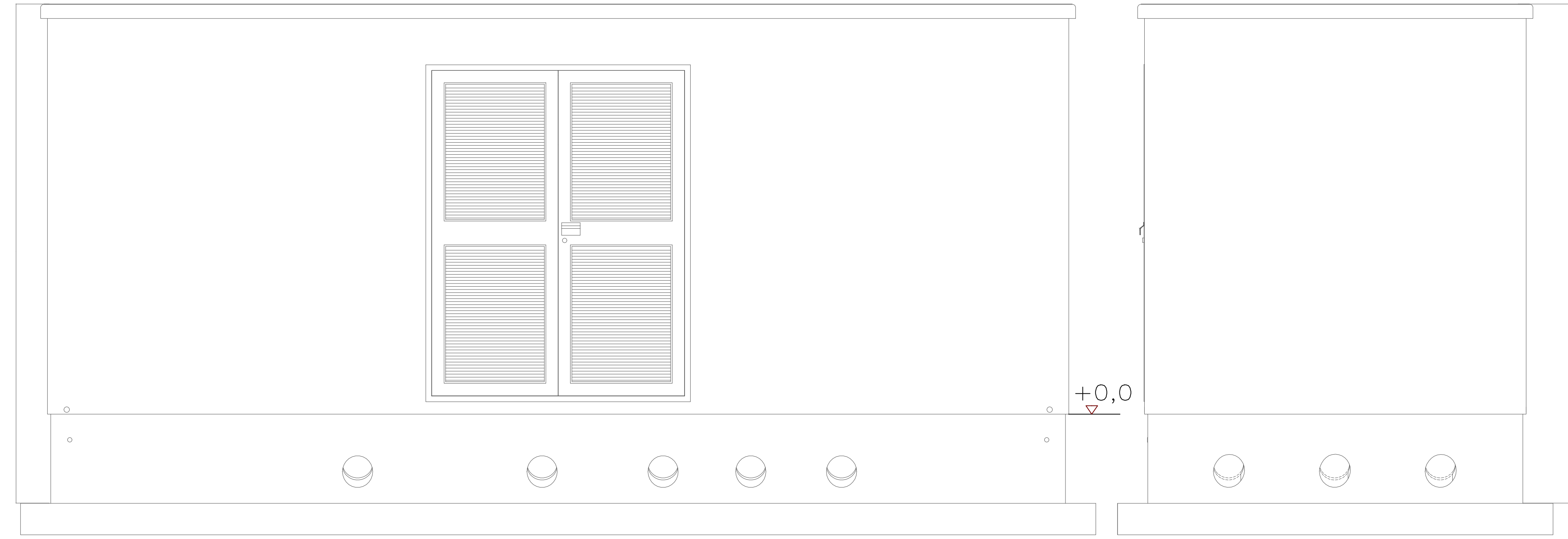
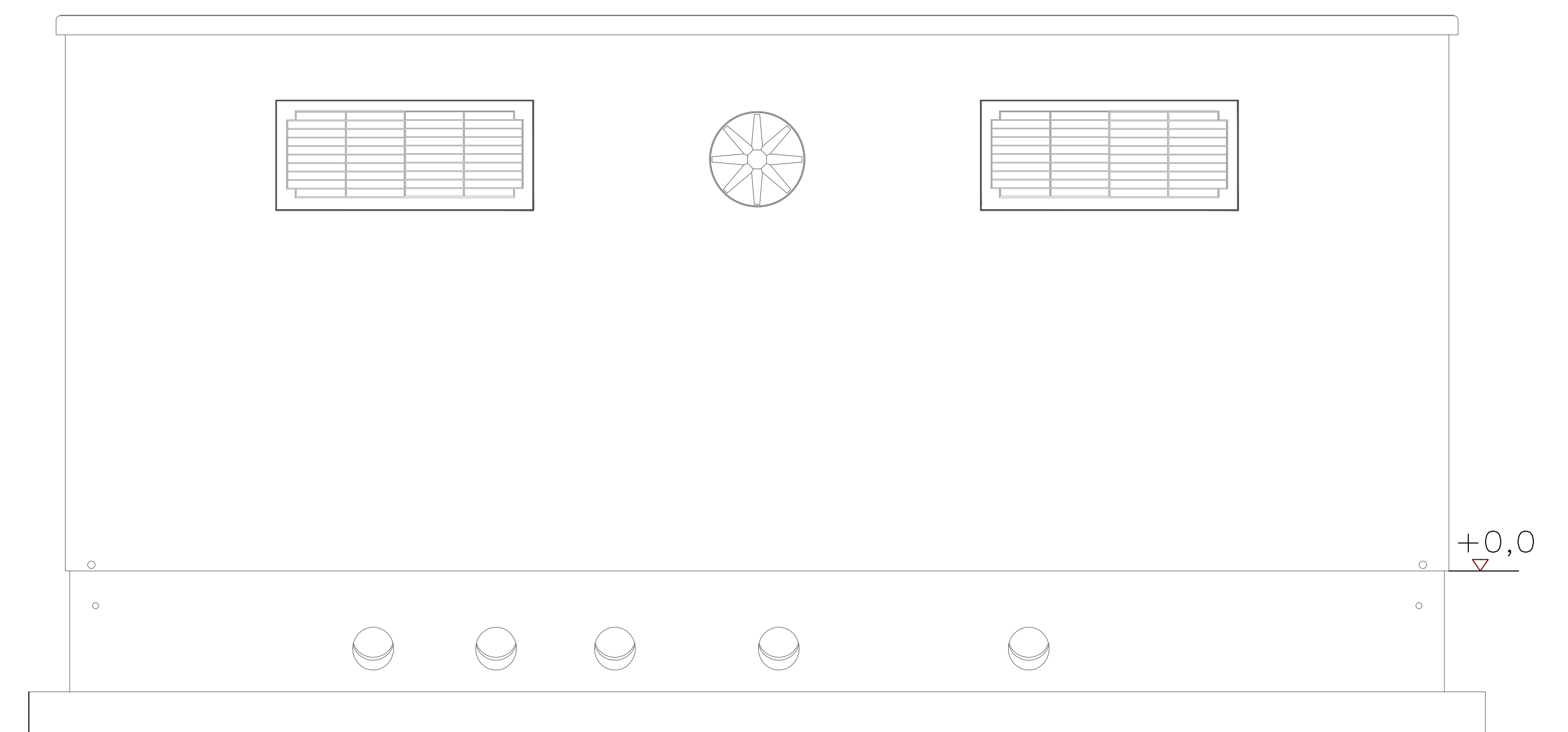


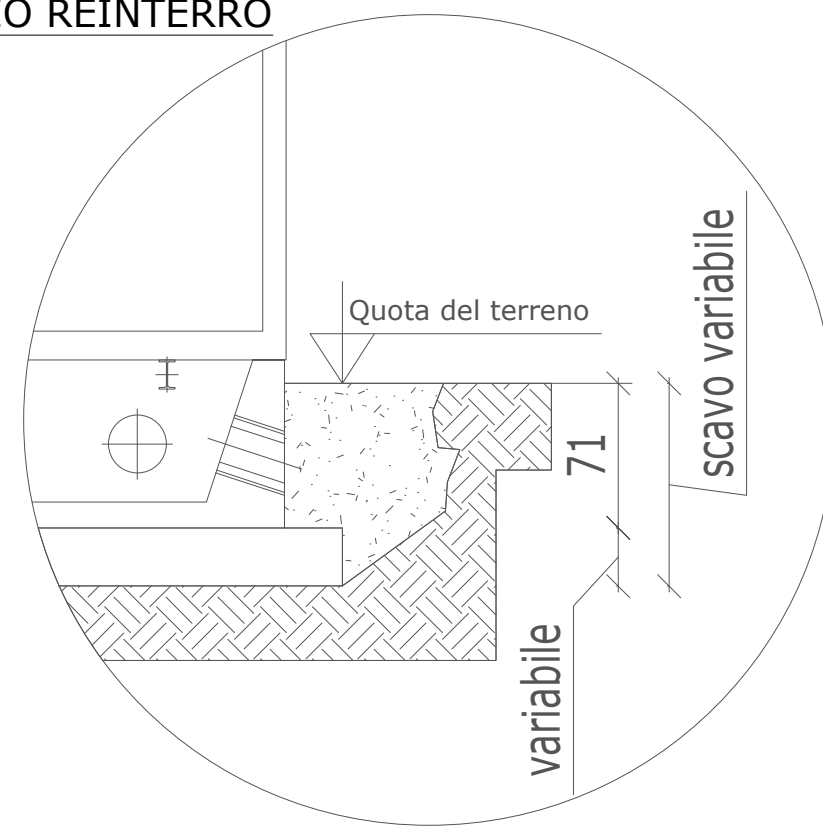
PROSPETTO A



PROSPETTO B



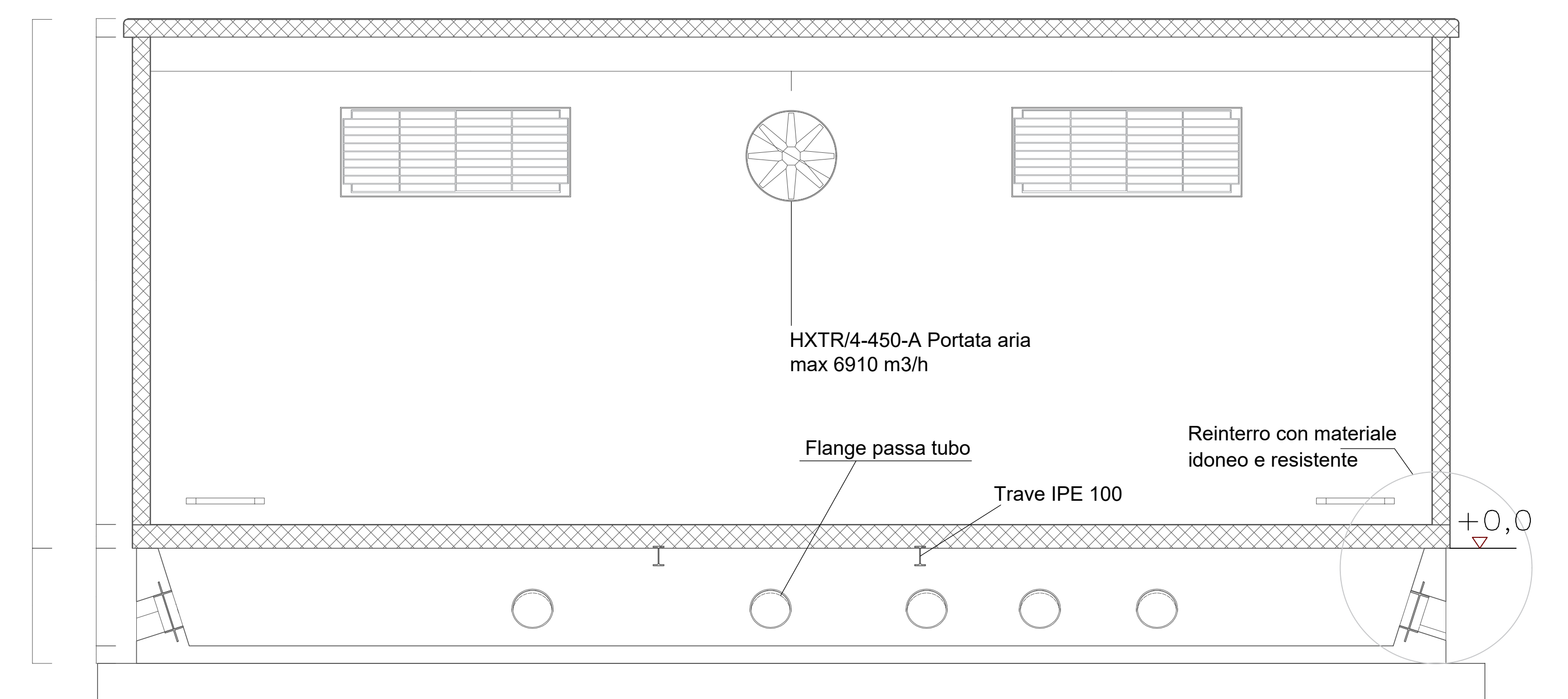
DETTAGLIO REINTERRO



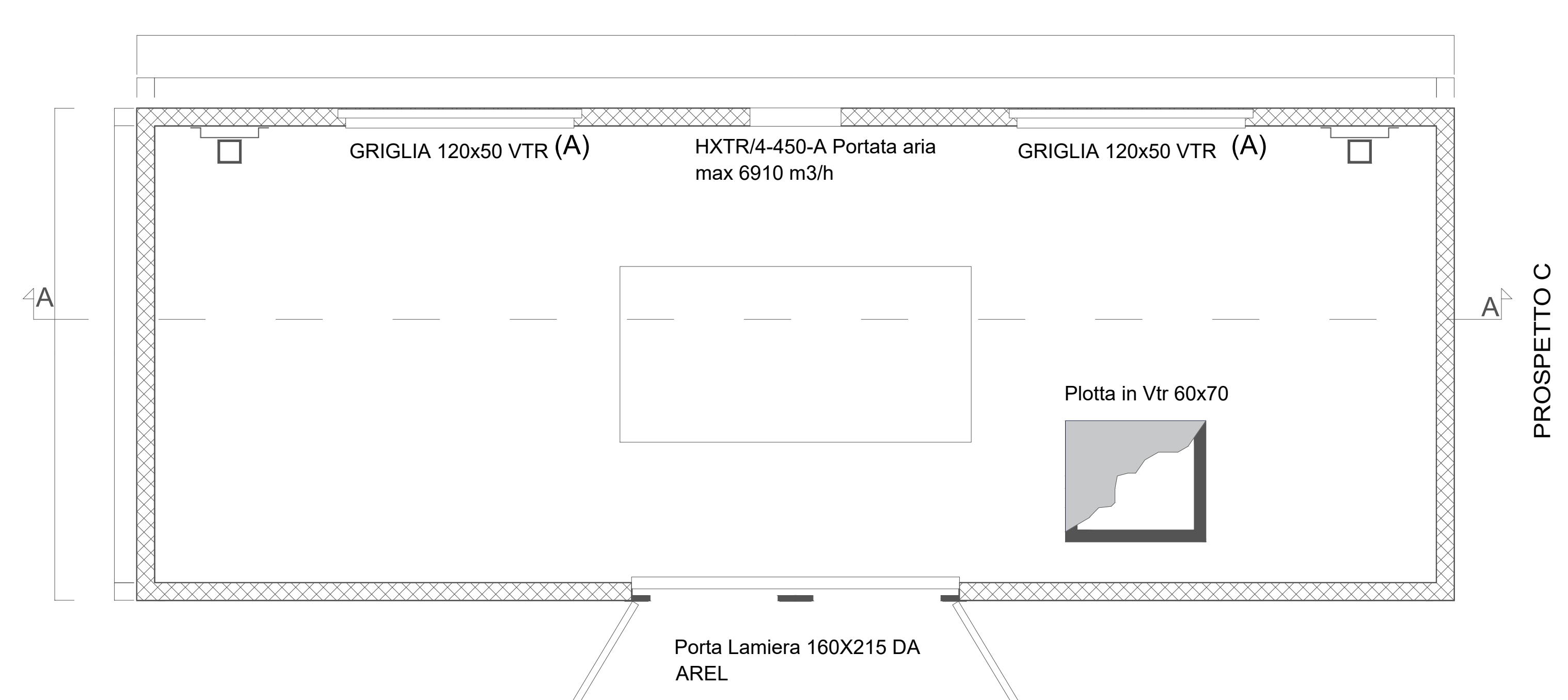
LEGENDA MATERIALI

- Calcestruzzo Rck 500
- Piastre in c.a. a cura di altro tecnico
- Calcestruzzo Ciclopico
- Terreno

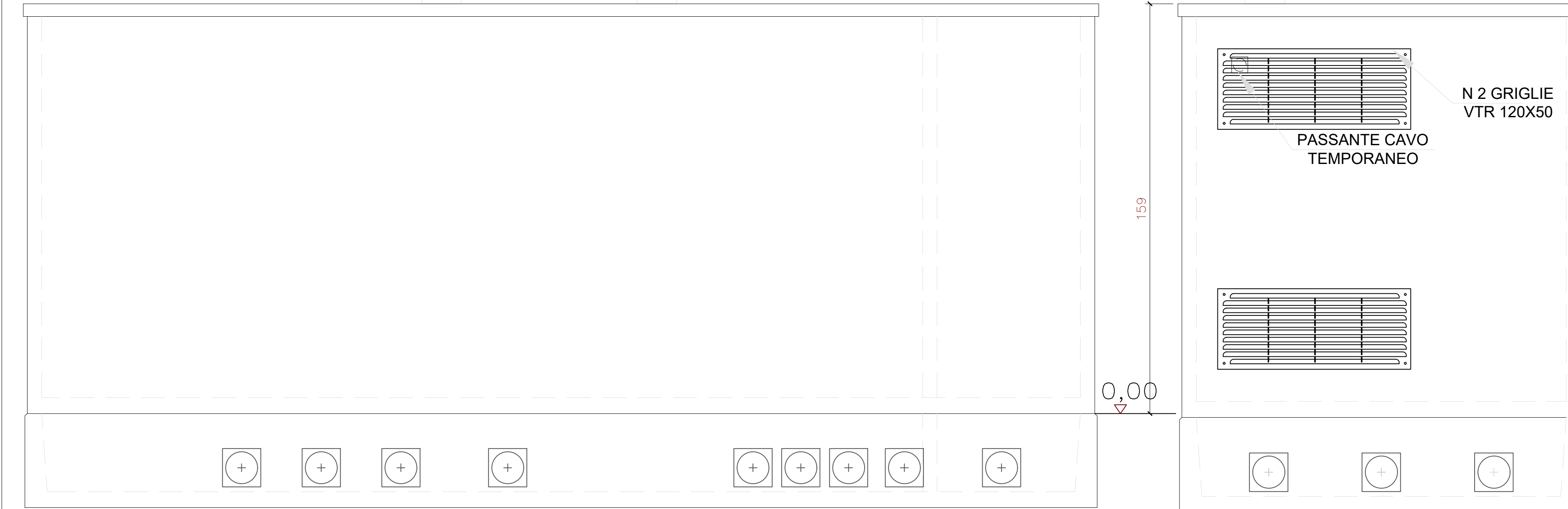
SEZIONE A-A'



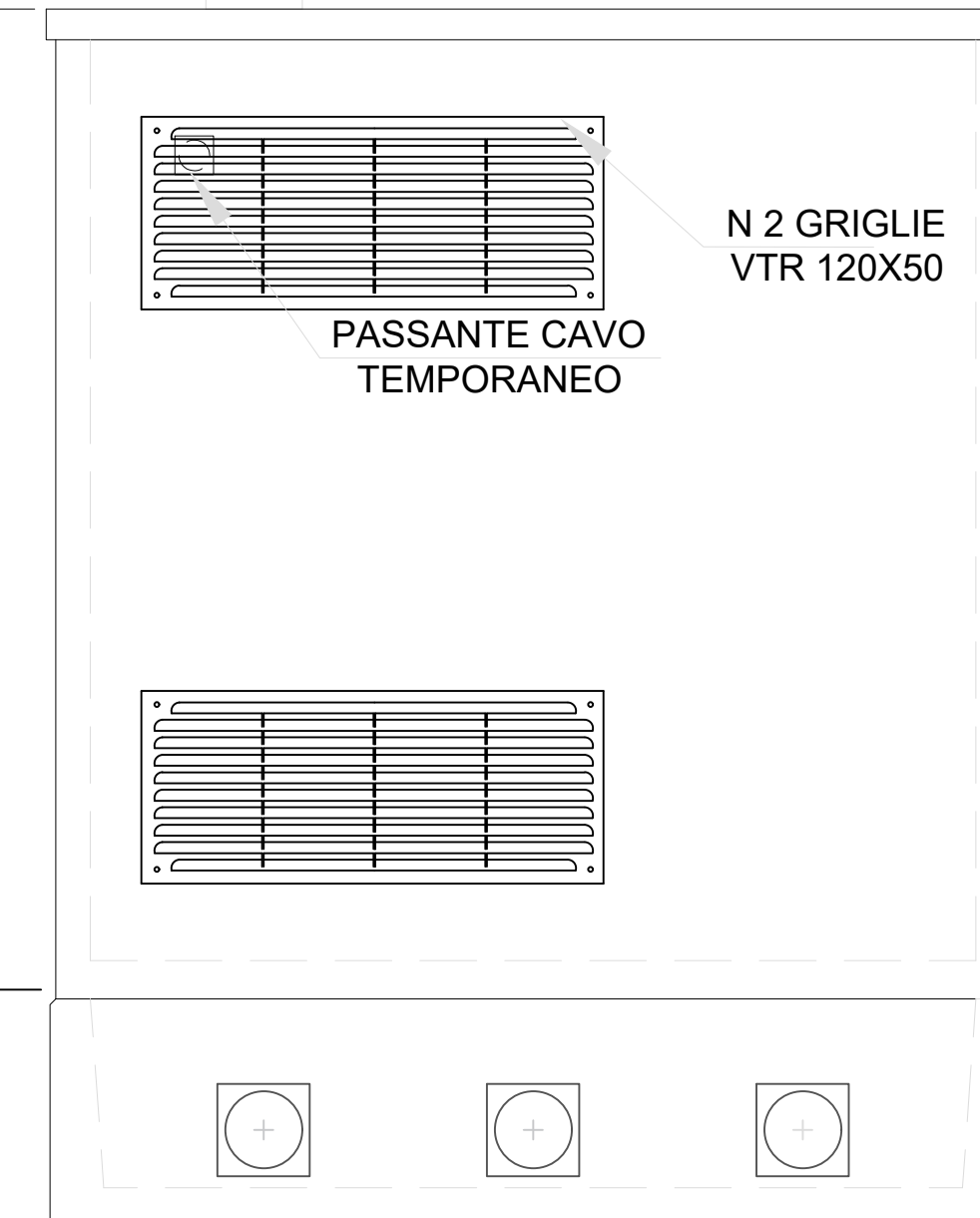
PIANTA



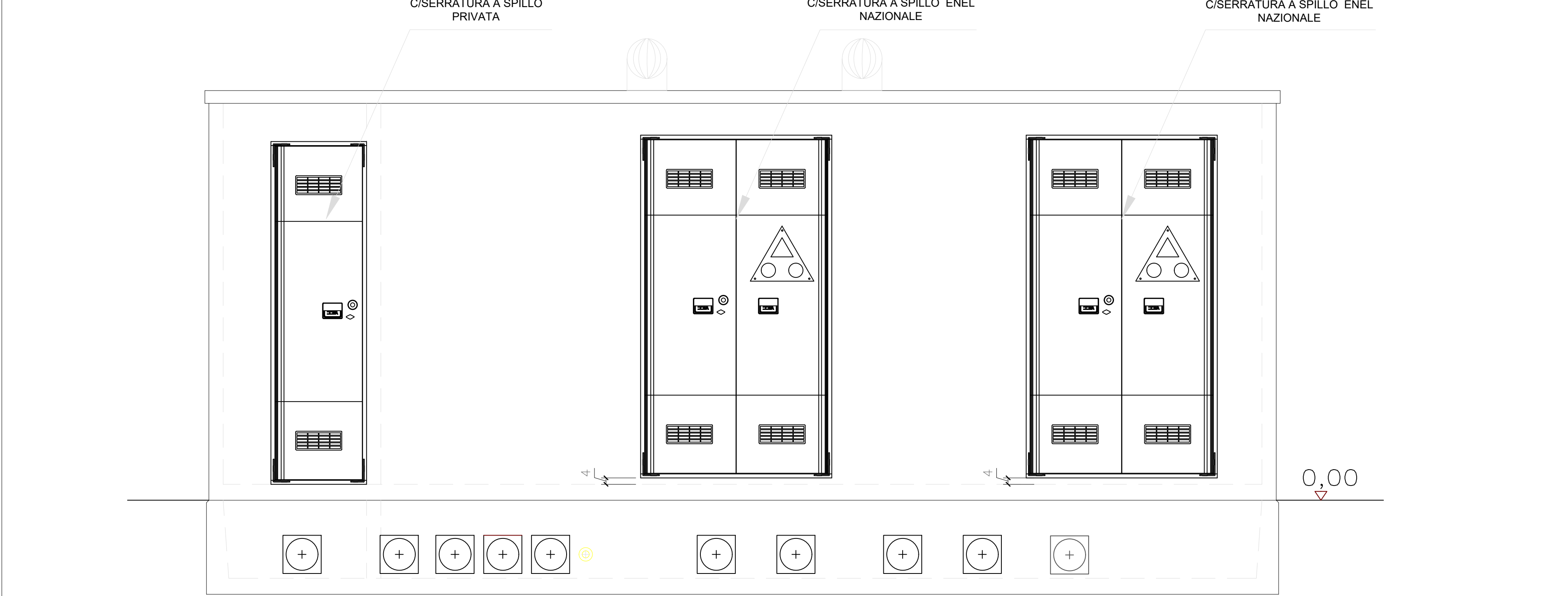
PROSPETTO B



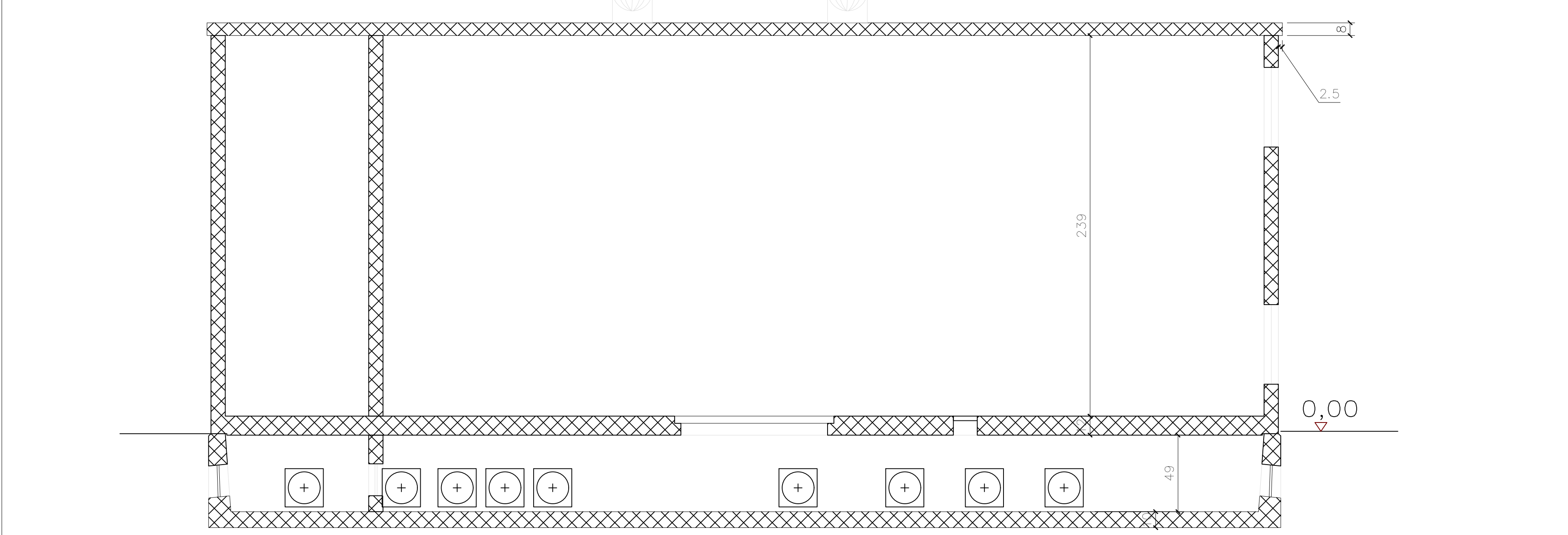
PROSPETTO C



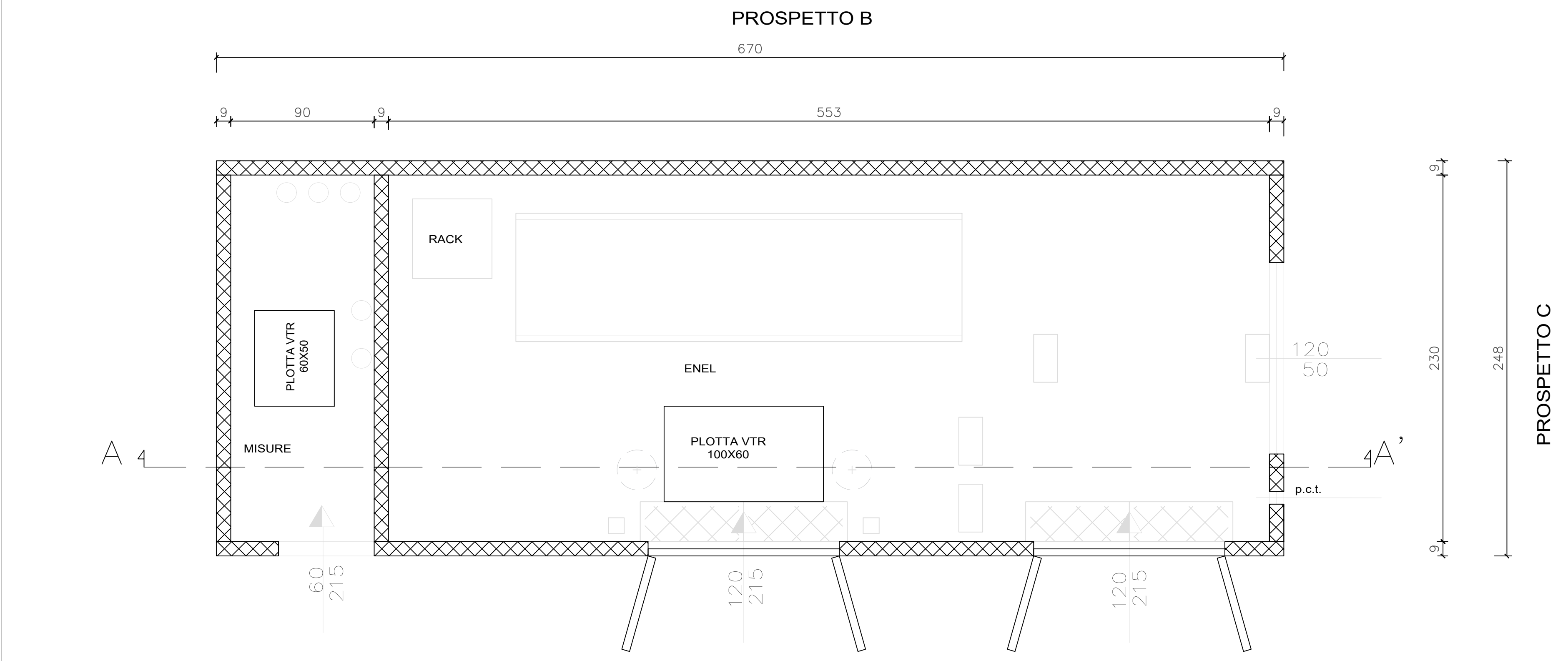
PROSPETTO A



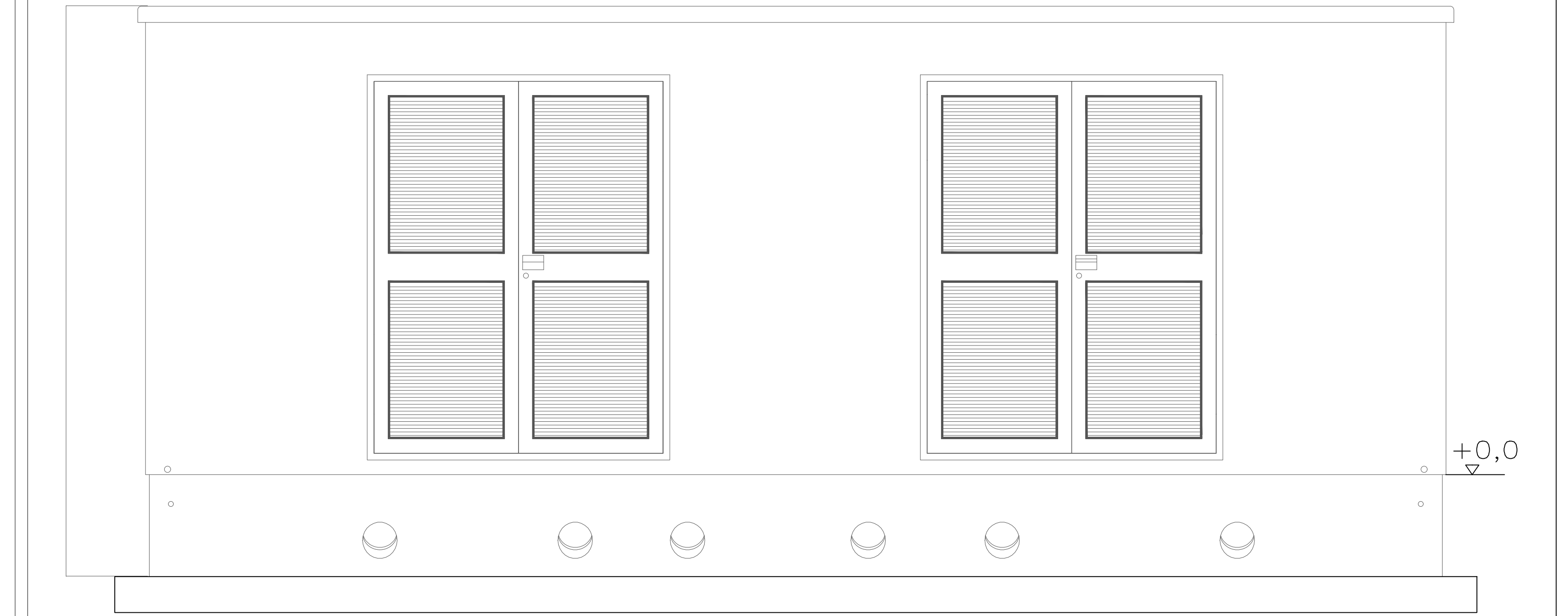
SEZIONE A-A'



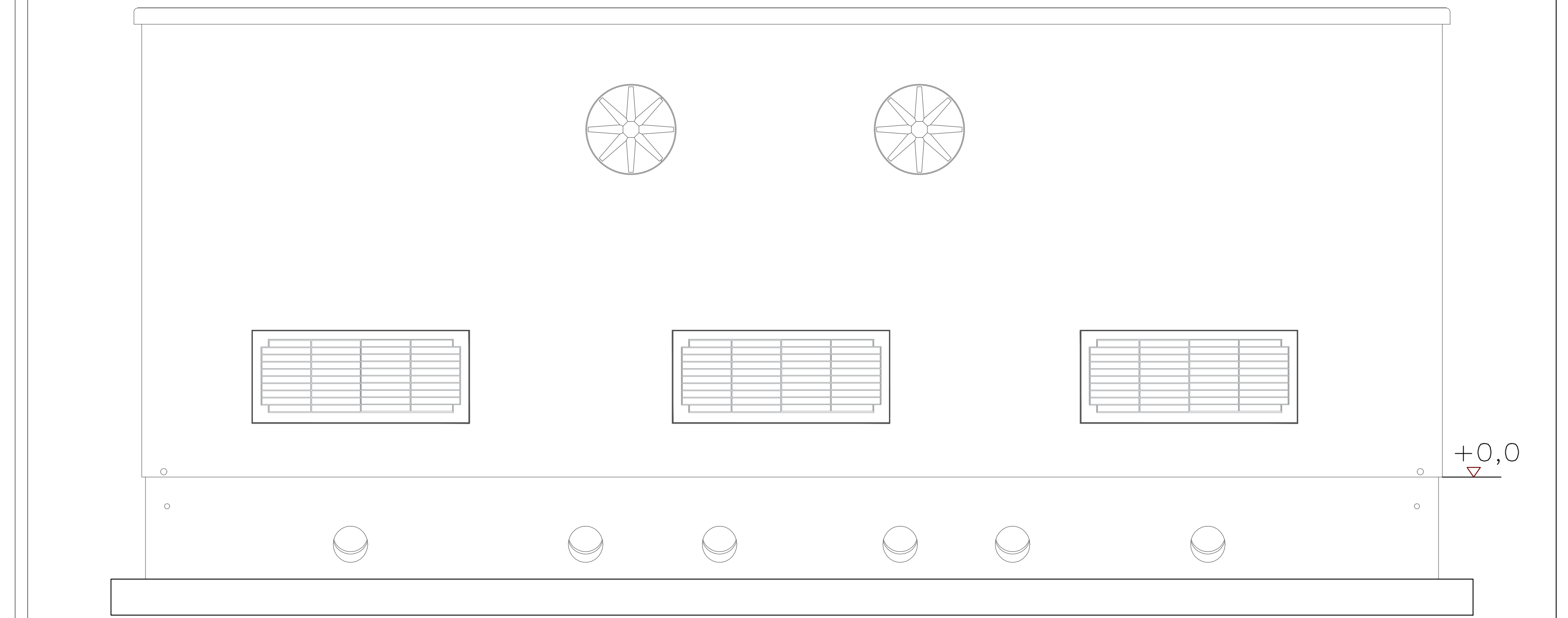
PIANTA



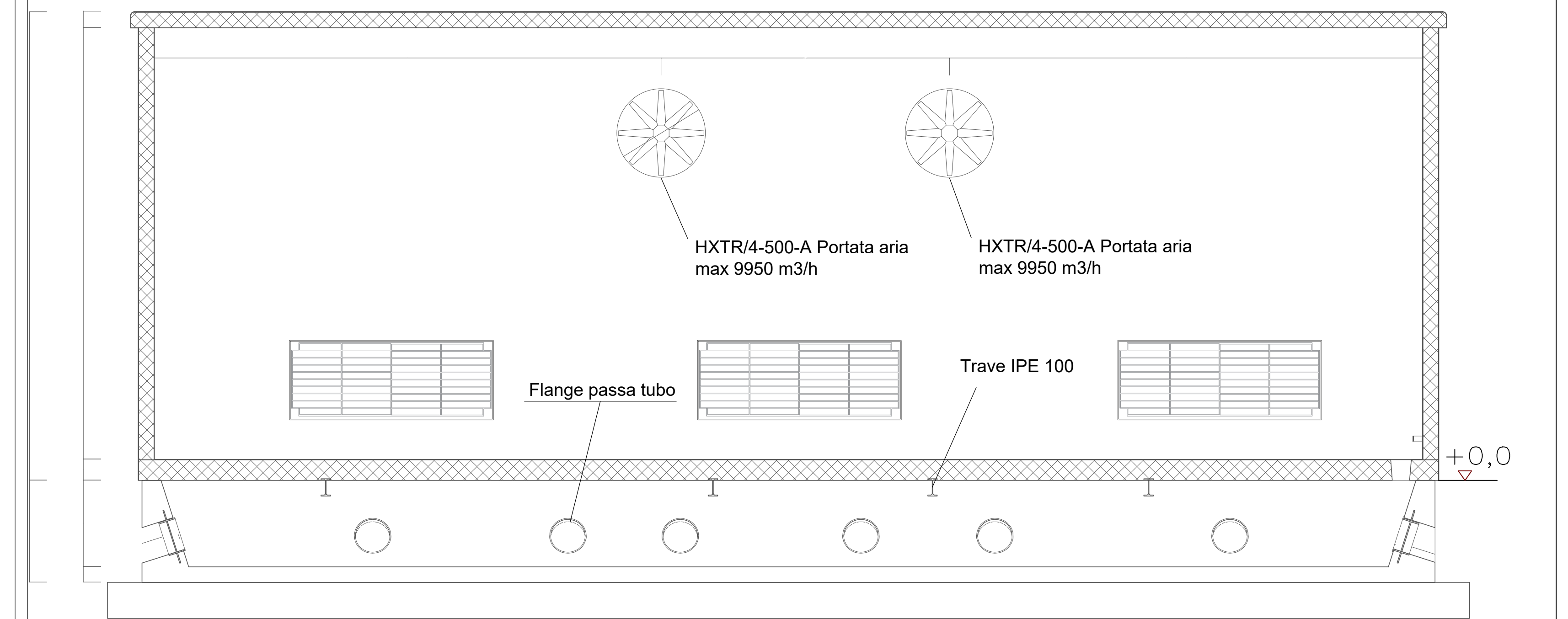
PROSPETTO A



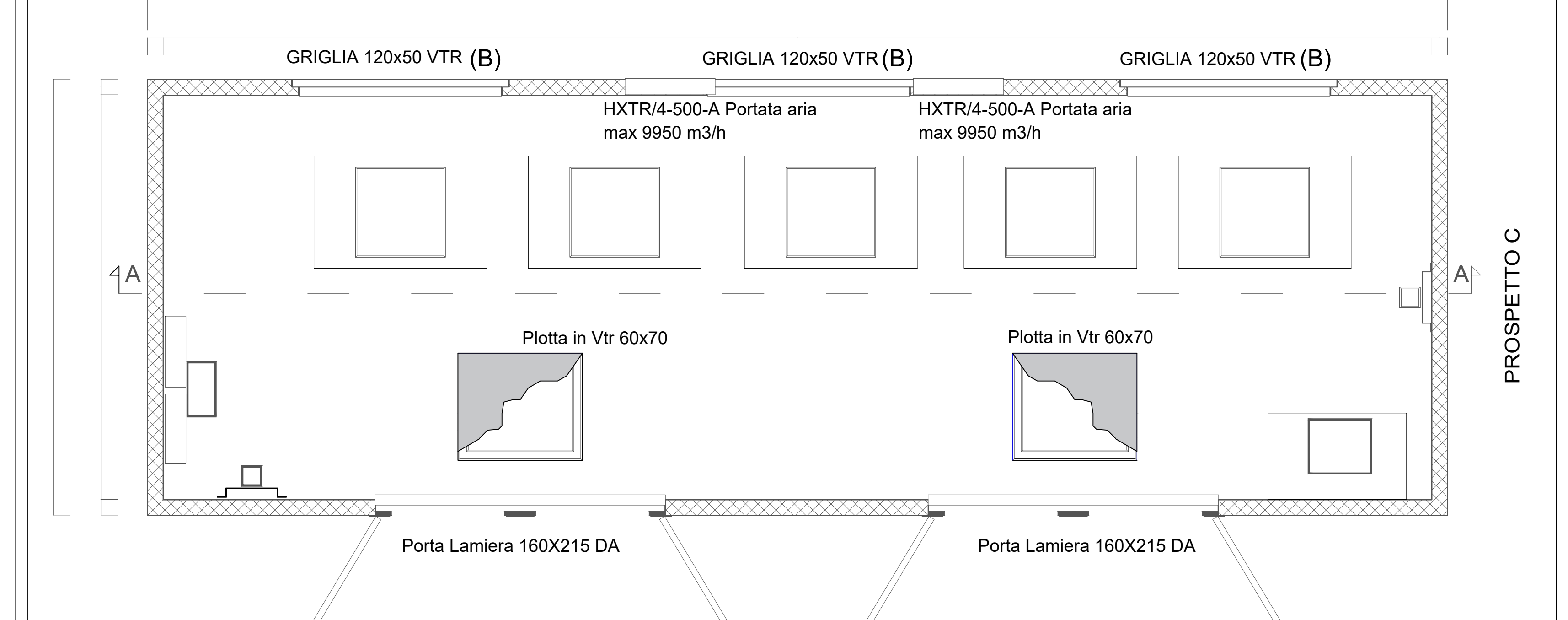
PROSPETTO B



SEZIONE A-A'



PIANTA



**GR Value**  
GR Value Brindisi 2 S.r.l.  
Via Dante, 9 - Tel. +39 02 50045109  
20122 Milano - PEC: grvaluebrindisi@grvalue.it

**GR Value Brindisi 2 S.r.l.**  
Via Dante, 9 - Tel. +39 02 50045109  
20122 Milano - PEC: grvaluebrindisi@grvalue.it

**ingveprogetti**  
Ing. Giovanni Vercellotti  
Via Feltrina 8, 01100 - Tel. +39 0761 270000  
01100 - PEC: ingveprogetti@ingveprogetti.it

**PROGETTO DEFINITIVO PER LA REALIZZAZIONE DI UN IMPIANTO AGROVOLTAIICO DENOMINATO "MESSAPIA" DI POTENZA COMPLESSIVA PARI A 29,65 MW SITO NEI COMUNI DI MESAGNE (BR) E TORRE SANTA SUSANNA (BR), CON OPERE DI CONNESSIONE NEL COMUNE DI MESAGNE (BR)**

**Particolari costruttivi: cabine impianto fotovoltaico**

1/1

N°	DATA	DESCRIZIONE	PROGETTO	VERIFICATO	APPROVATO
01	APRILE 2022	Prima emissione	Ing. Giorgio Vercellotti	Ing. Giorgio Vercellotti	

Codice elaborato: **TC2JGK65\_ElaboratoGrafico\_06** SCALA: 1:50