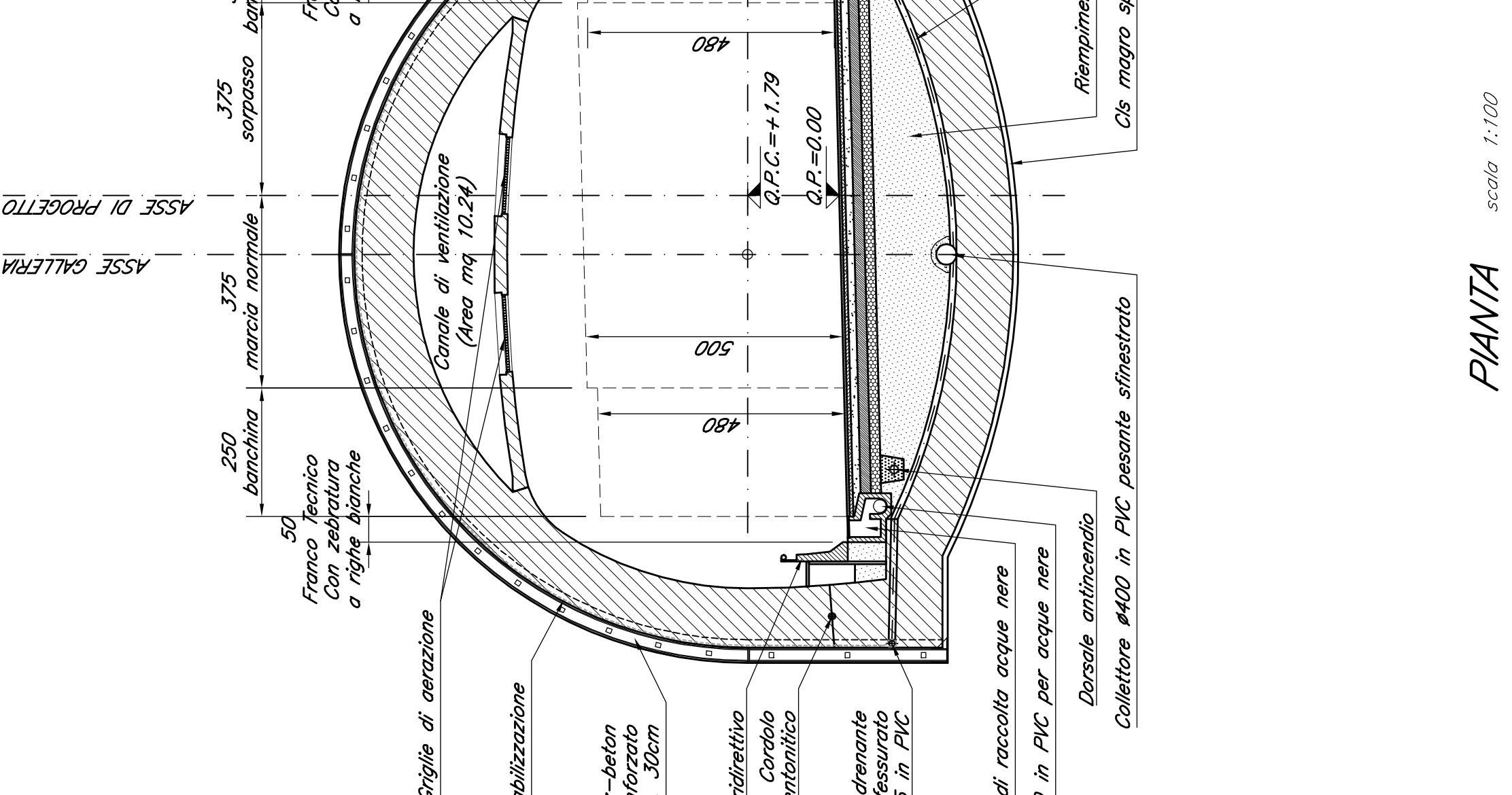


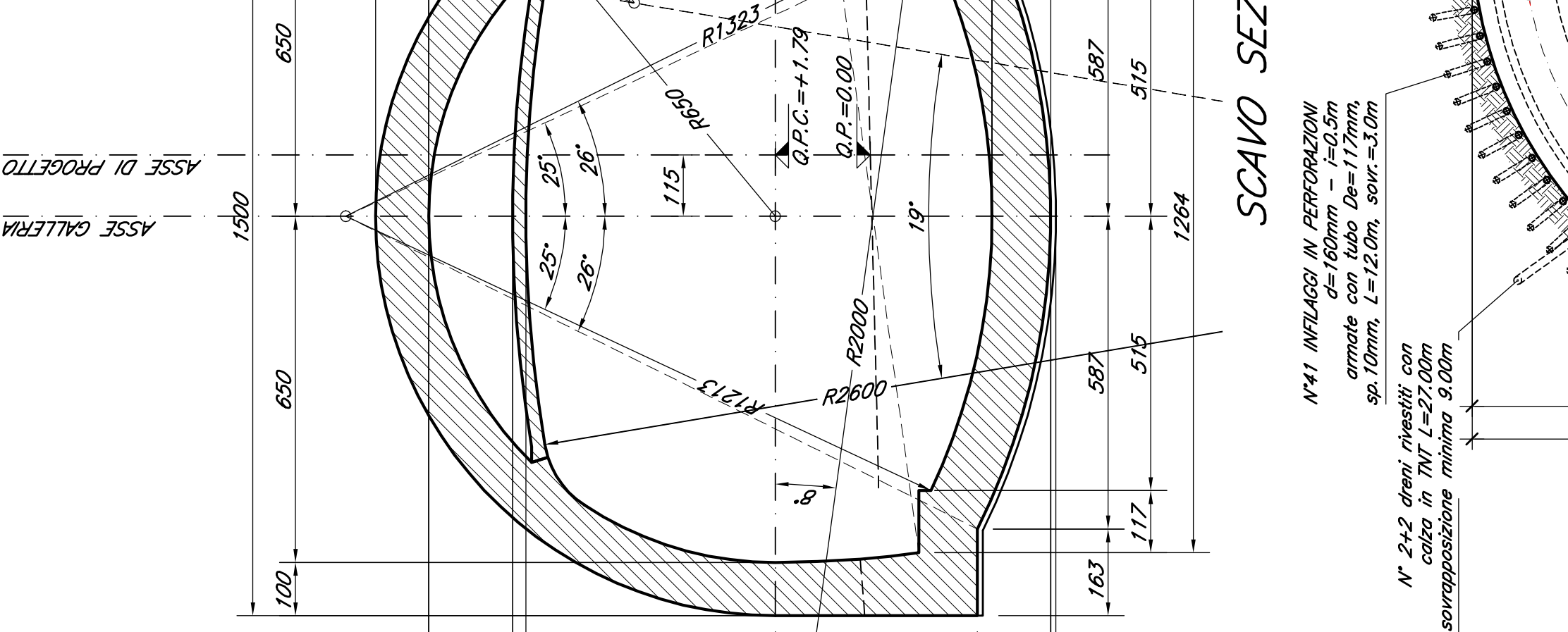
SEZIONE TIPO V

scala 1:100



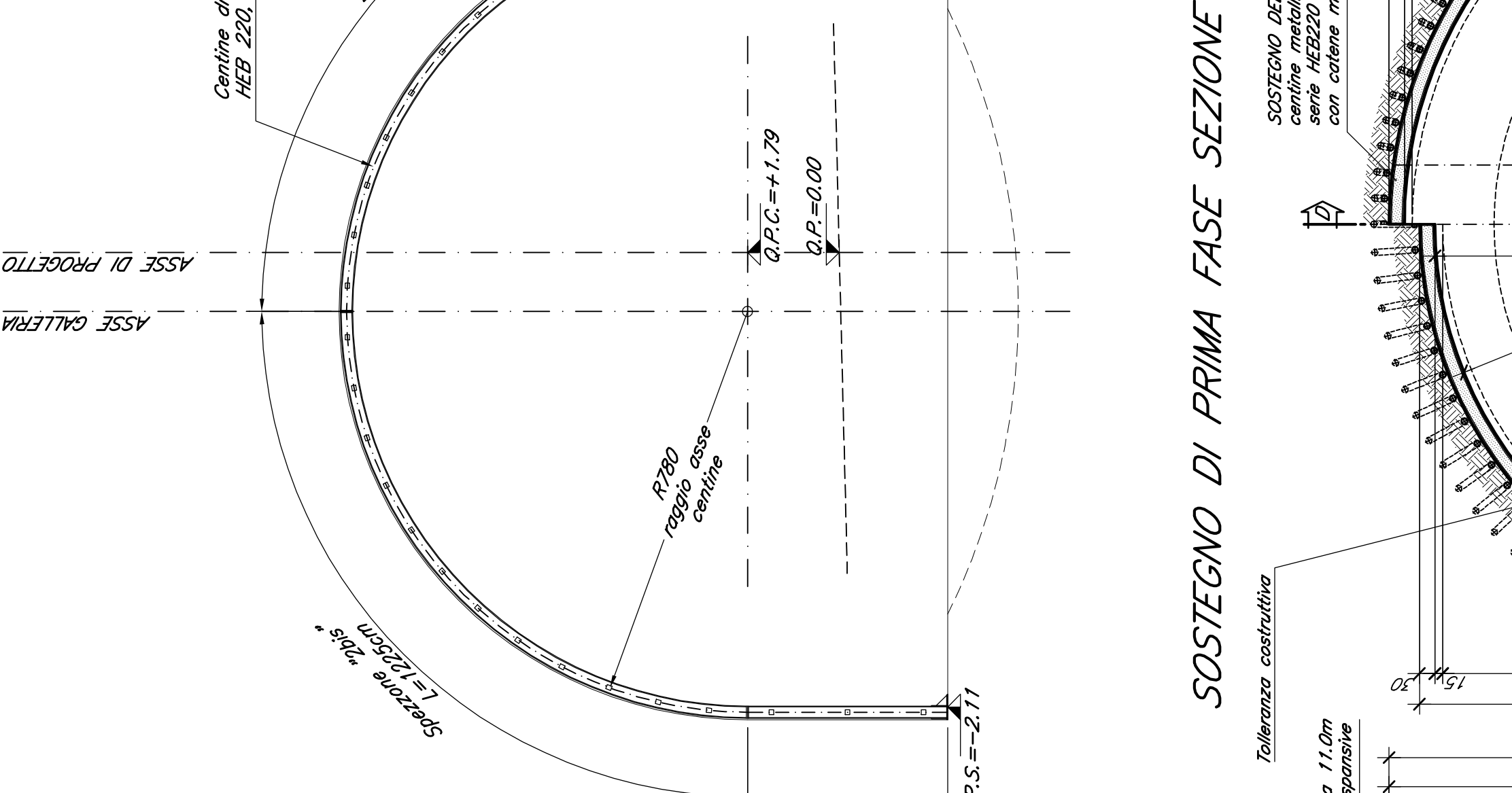
CARPENTERIA

scala 1:100



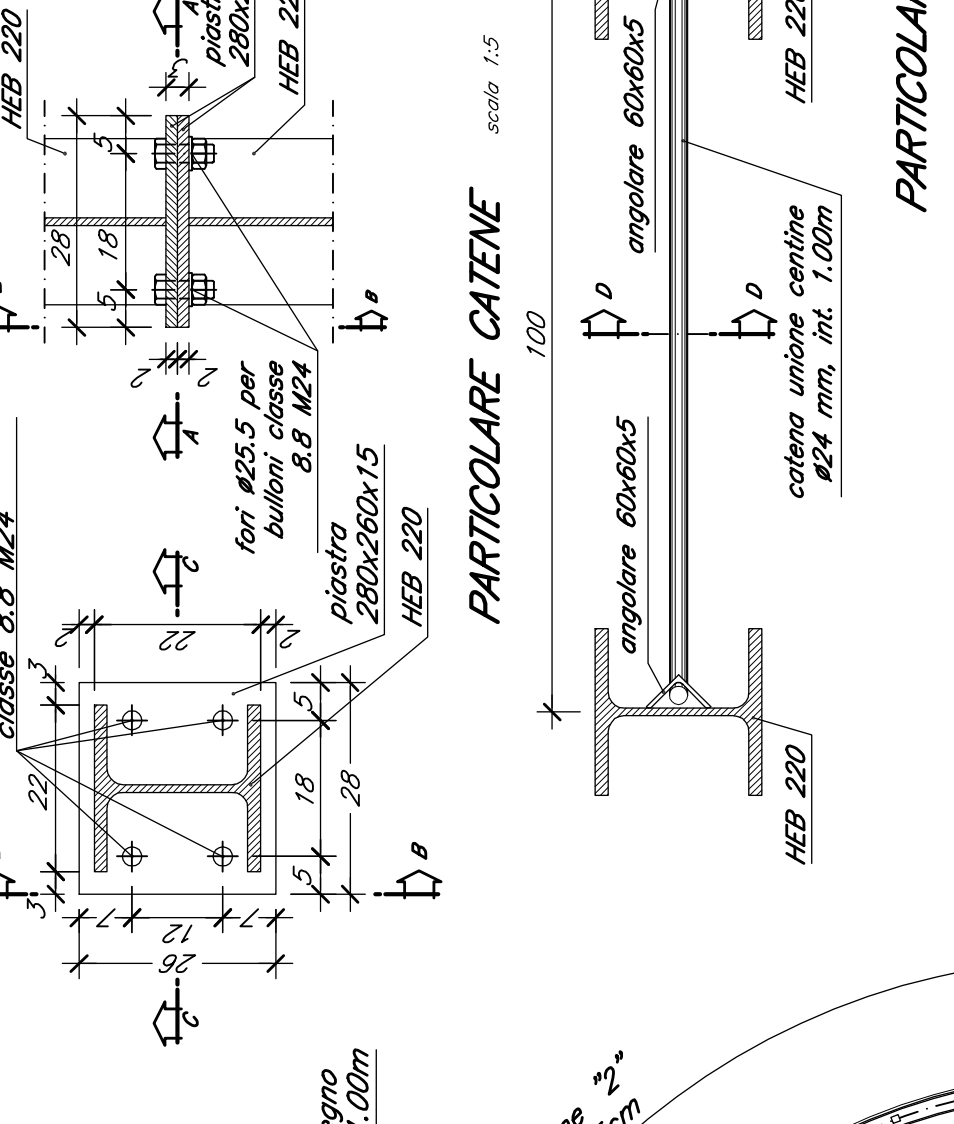
CARPENTERIA CENTINE

scala 1:100



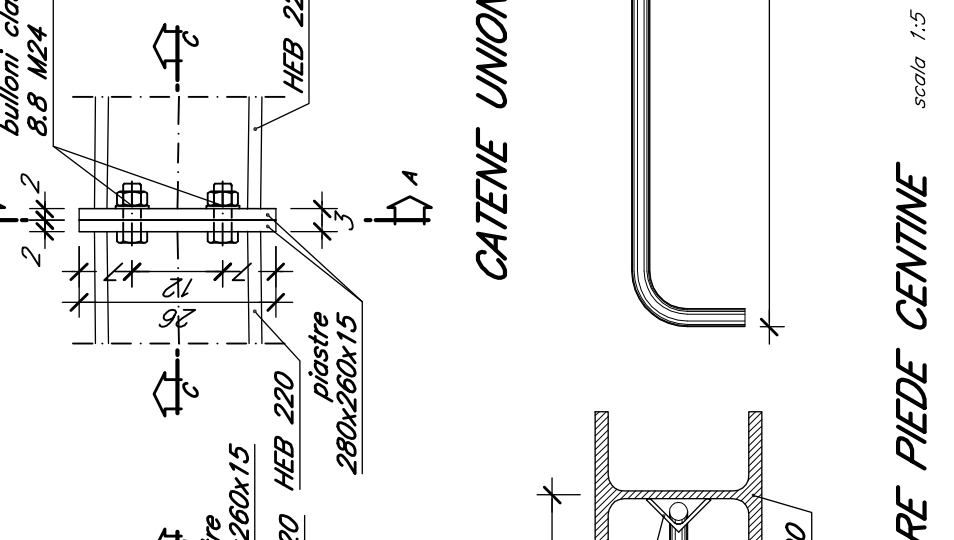
SEZIONE A-A

scala 1:5



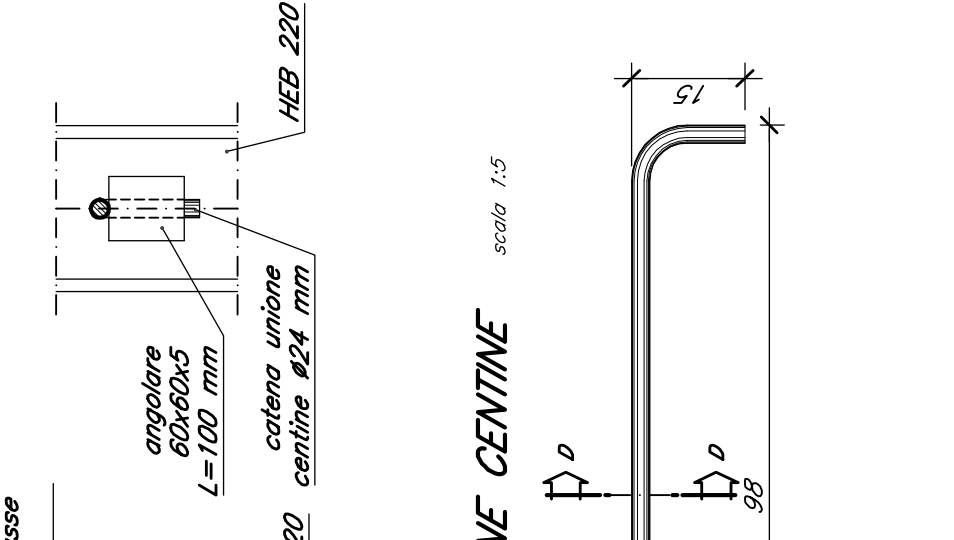
SEZIONE B-B

scala 1:5



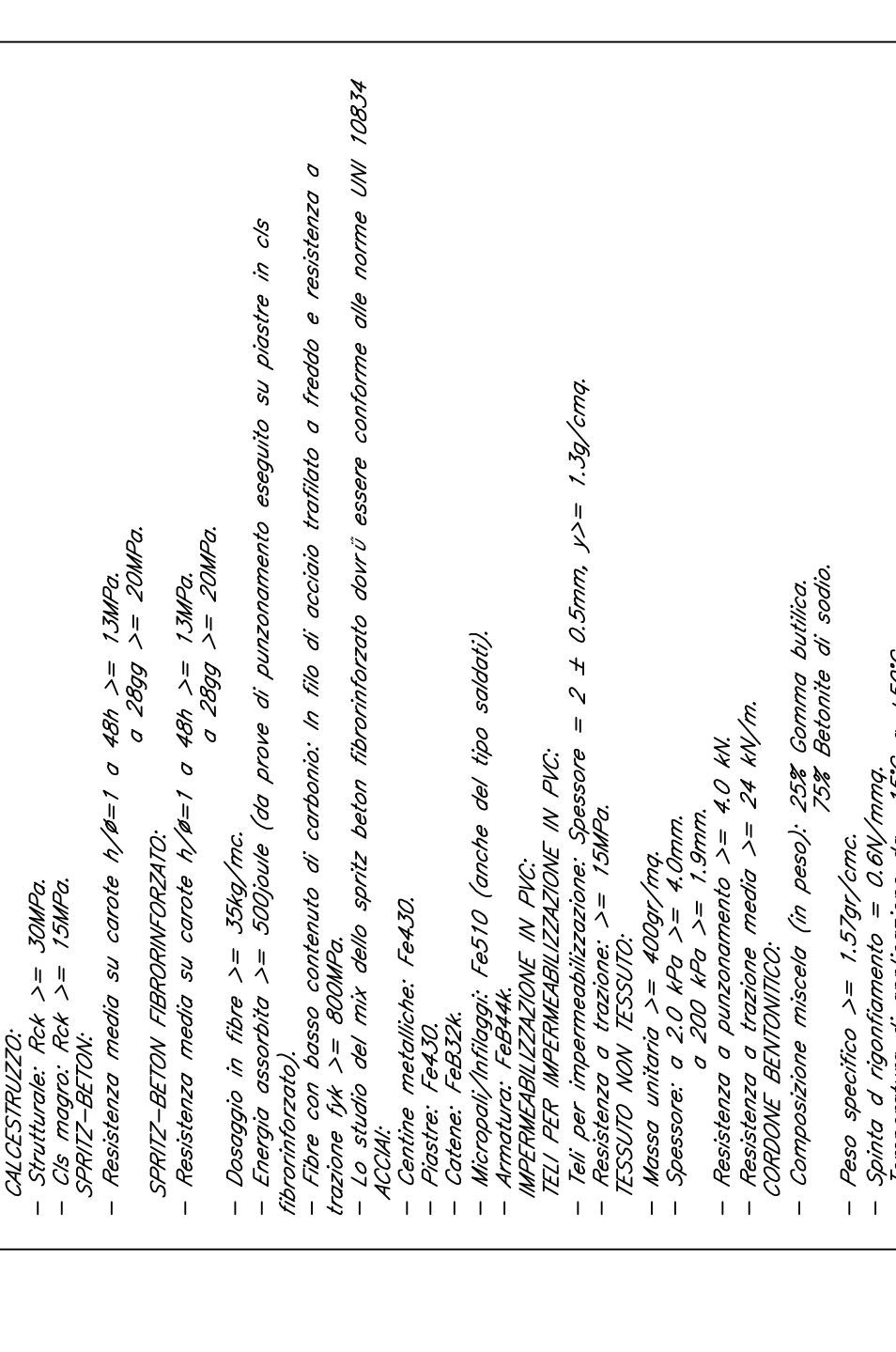
SEZIONE C-C

scala 1:5



SEZIONE D-D

scala 1:5

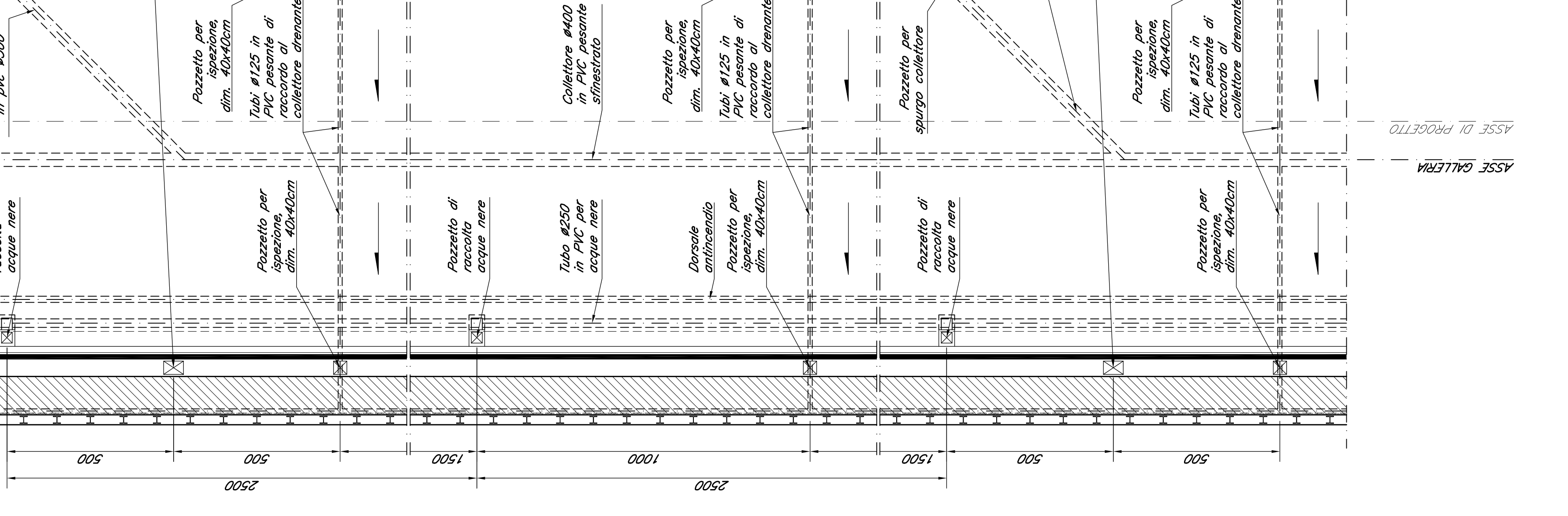


CARATTERISTICHE DEI MATERIALI

- Technical specifications for materials used in the project, including concrete, steel, and insulation.

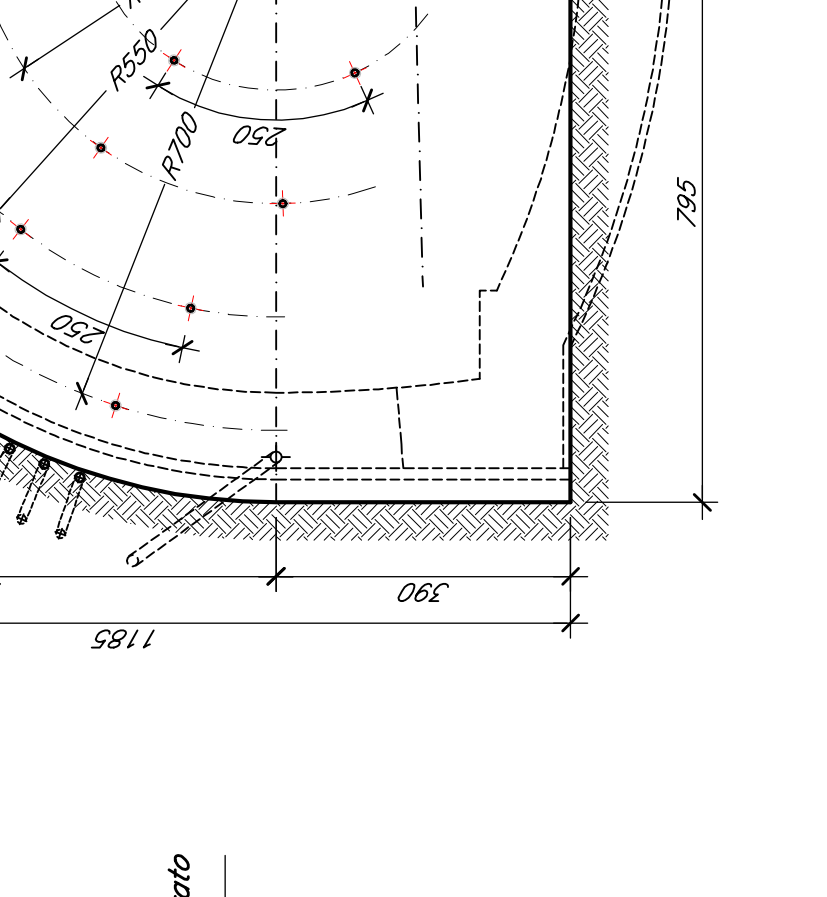
Pianta

scala 1:100



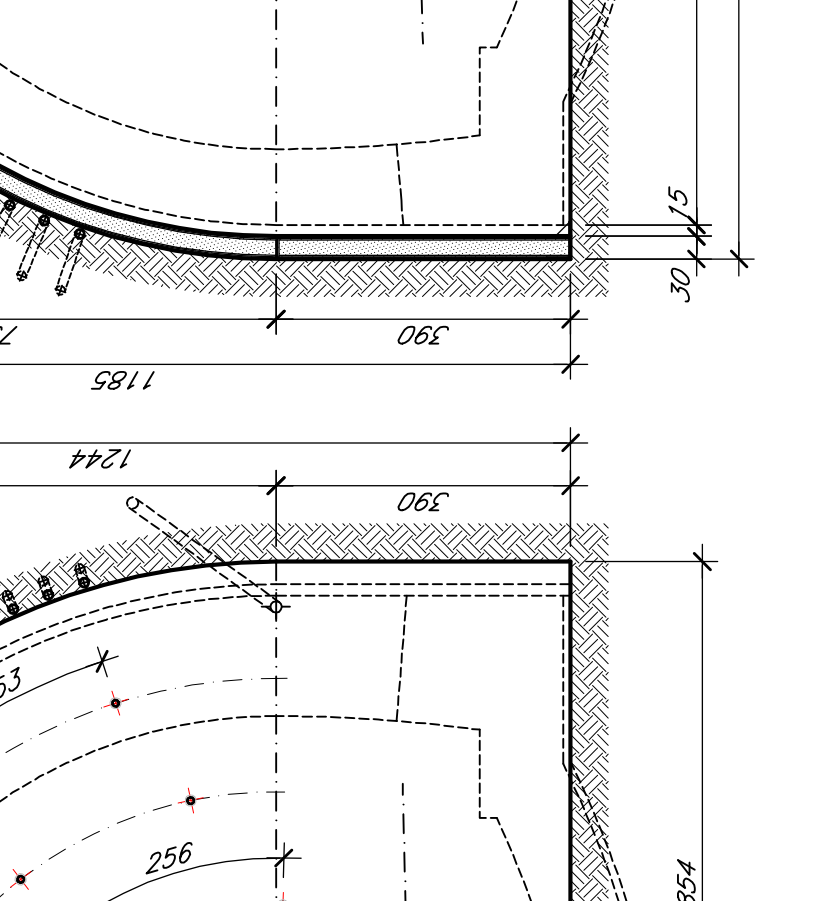
SCAVO SEZIONE A-A

scala 1:100



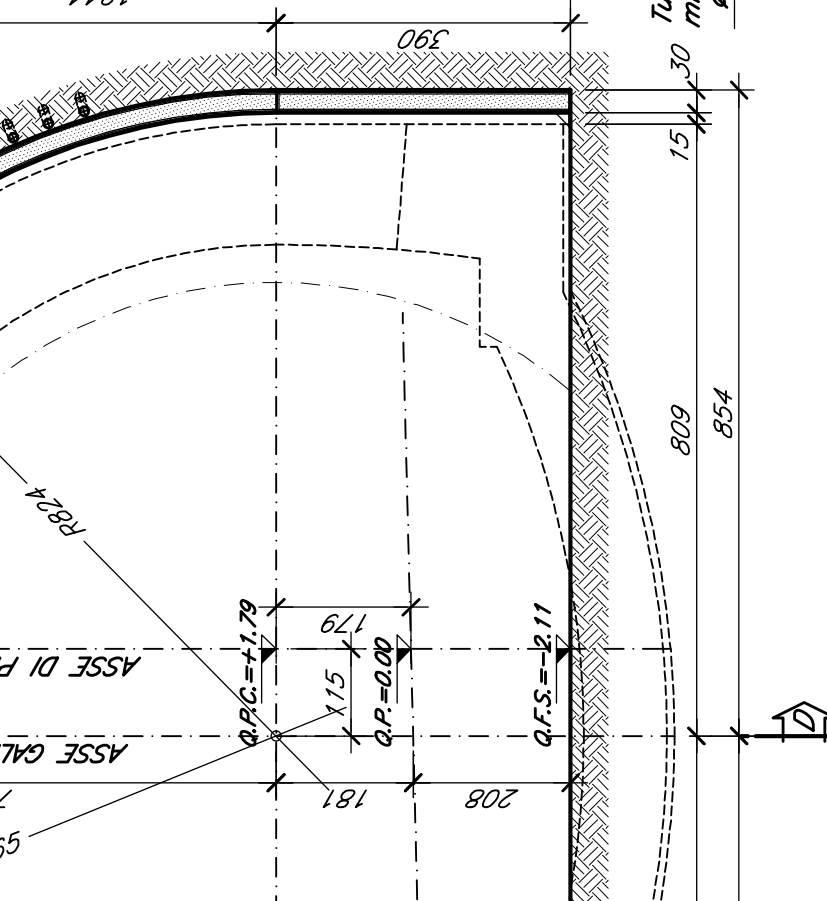
SOSTEGNO DI PRIMA FASE SEZIONE B-B

scala 1:100



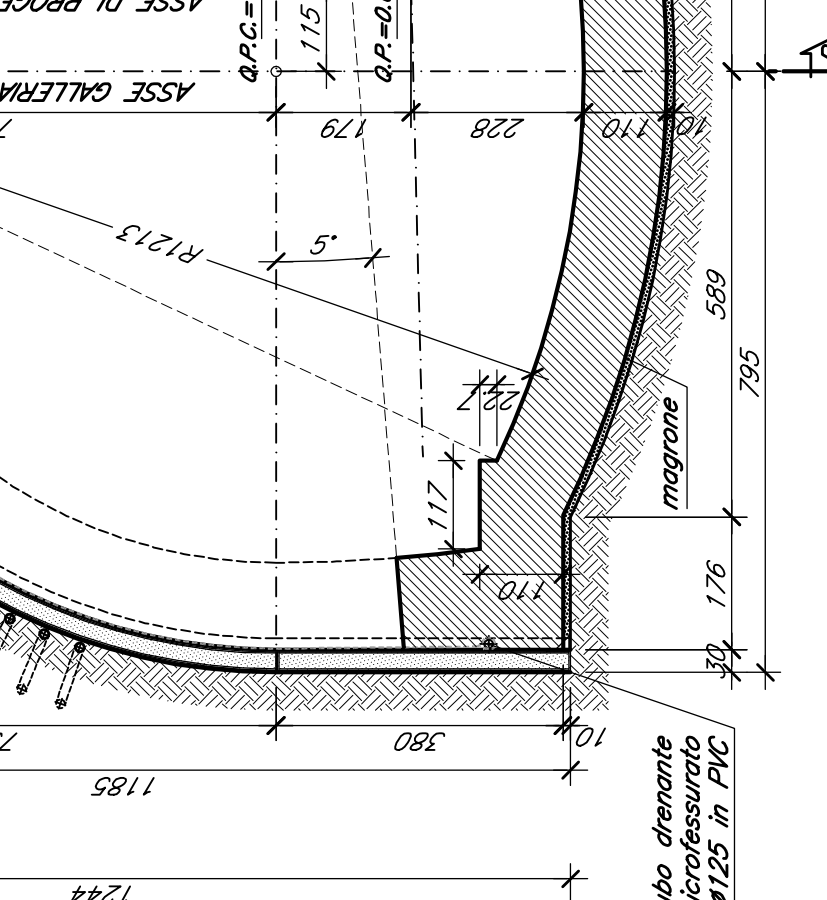
GETTO ARCO ROVERSCO SEZIONE C-C

scala 1:100



SEZIONE D-D PROFILO LONGITUDINALE

scala 1:100

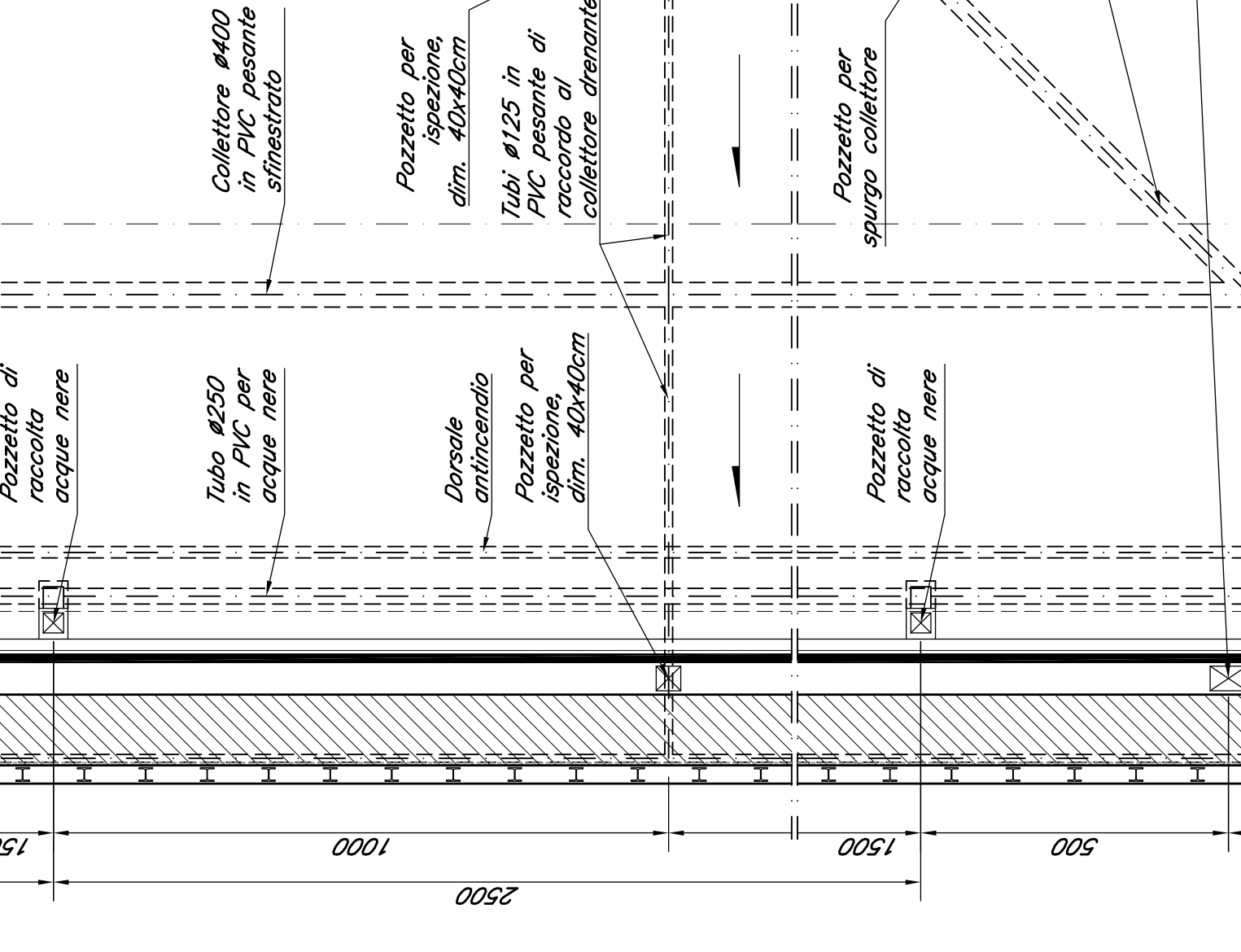


LEGENDA

- Legend for the drawings, defining symbols and abbreviations used throughout the project.

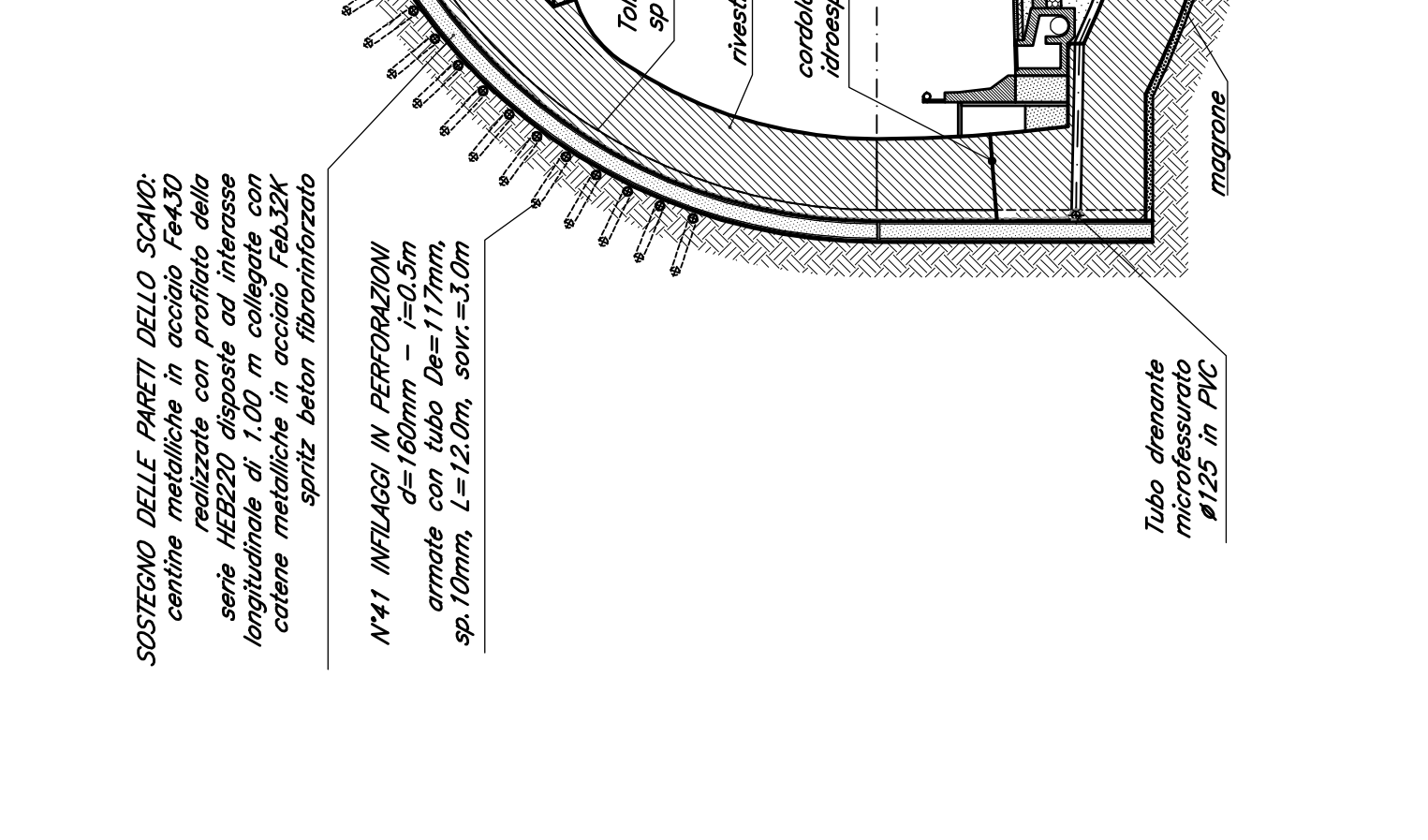
SEZIONE DEFINITIVA

scala 1:100



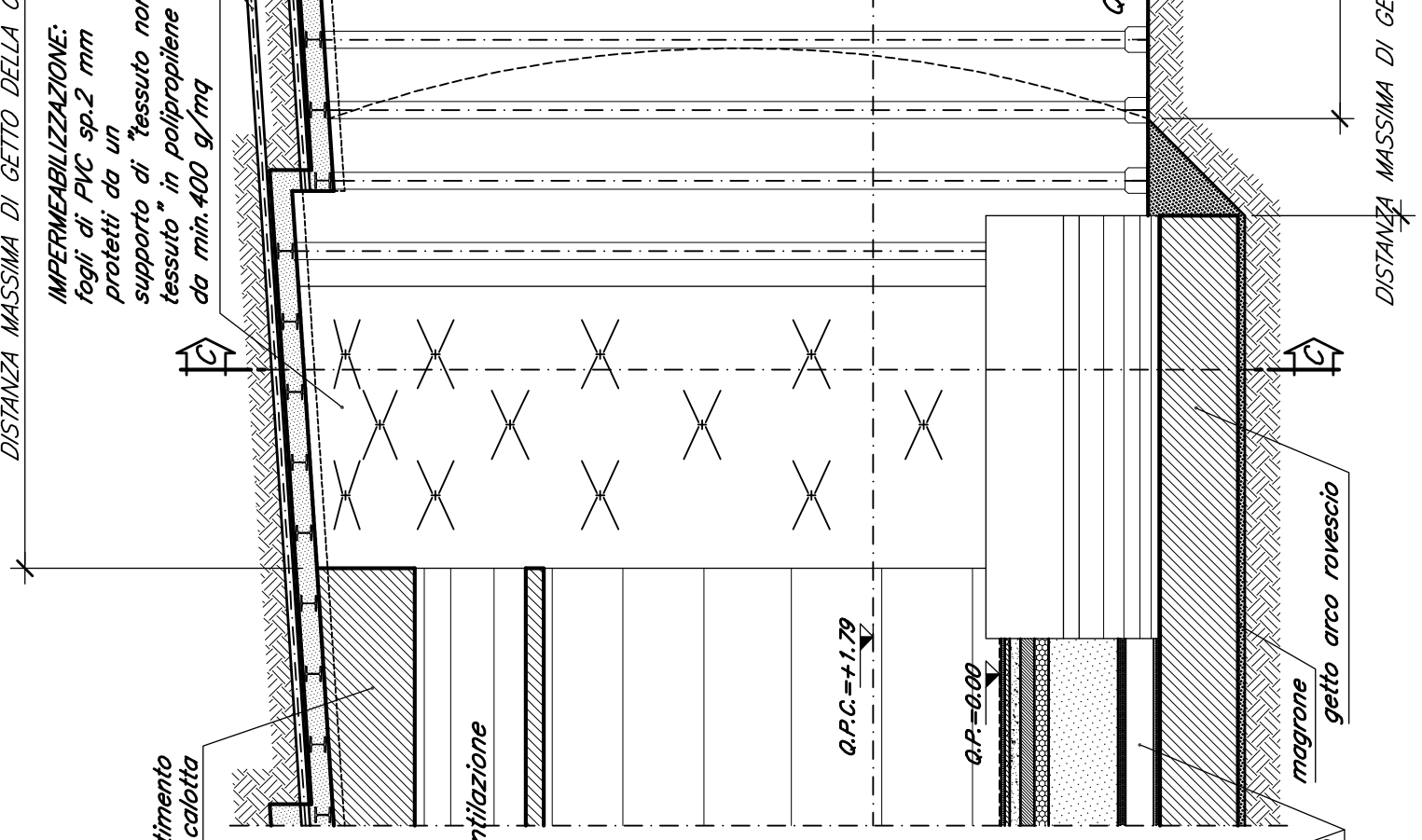
SEZIONE D-D

scala 1:200



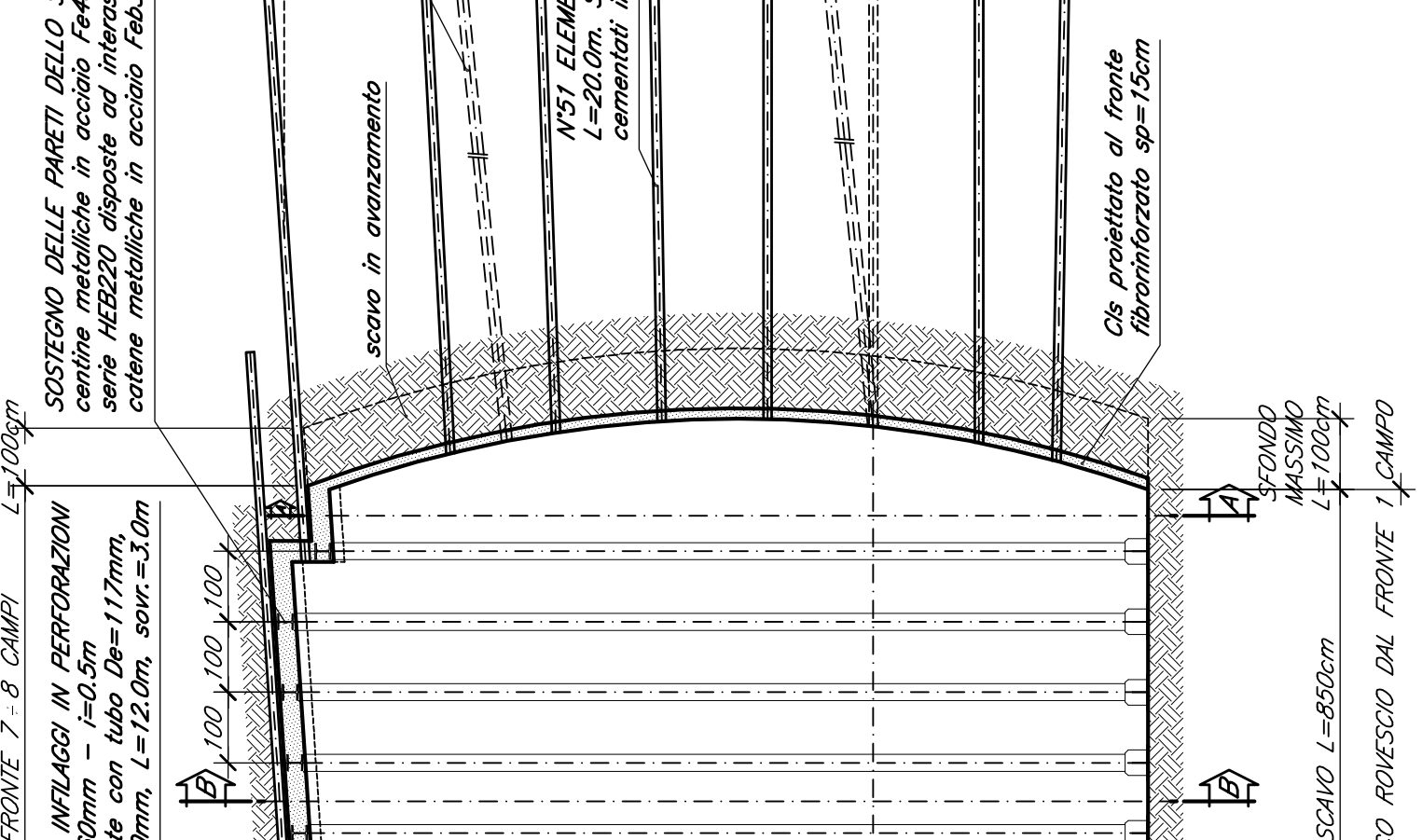
VOLUME DI SCAVO MASSIMO

scala 1:200



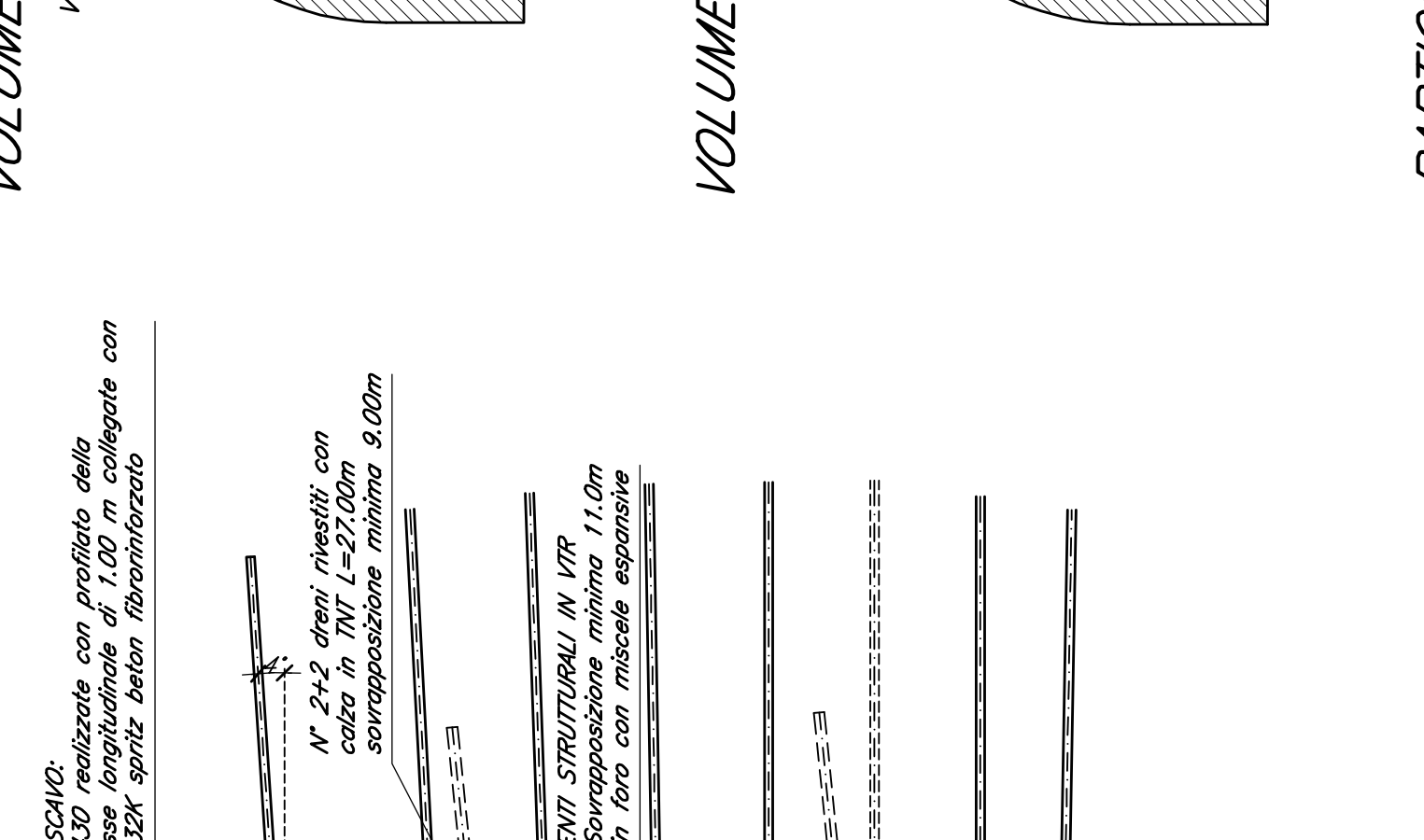
VOLUME DI SCAVO MINIMO

scala 1:200



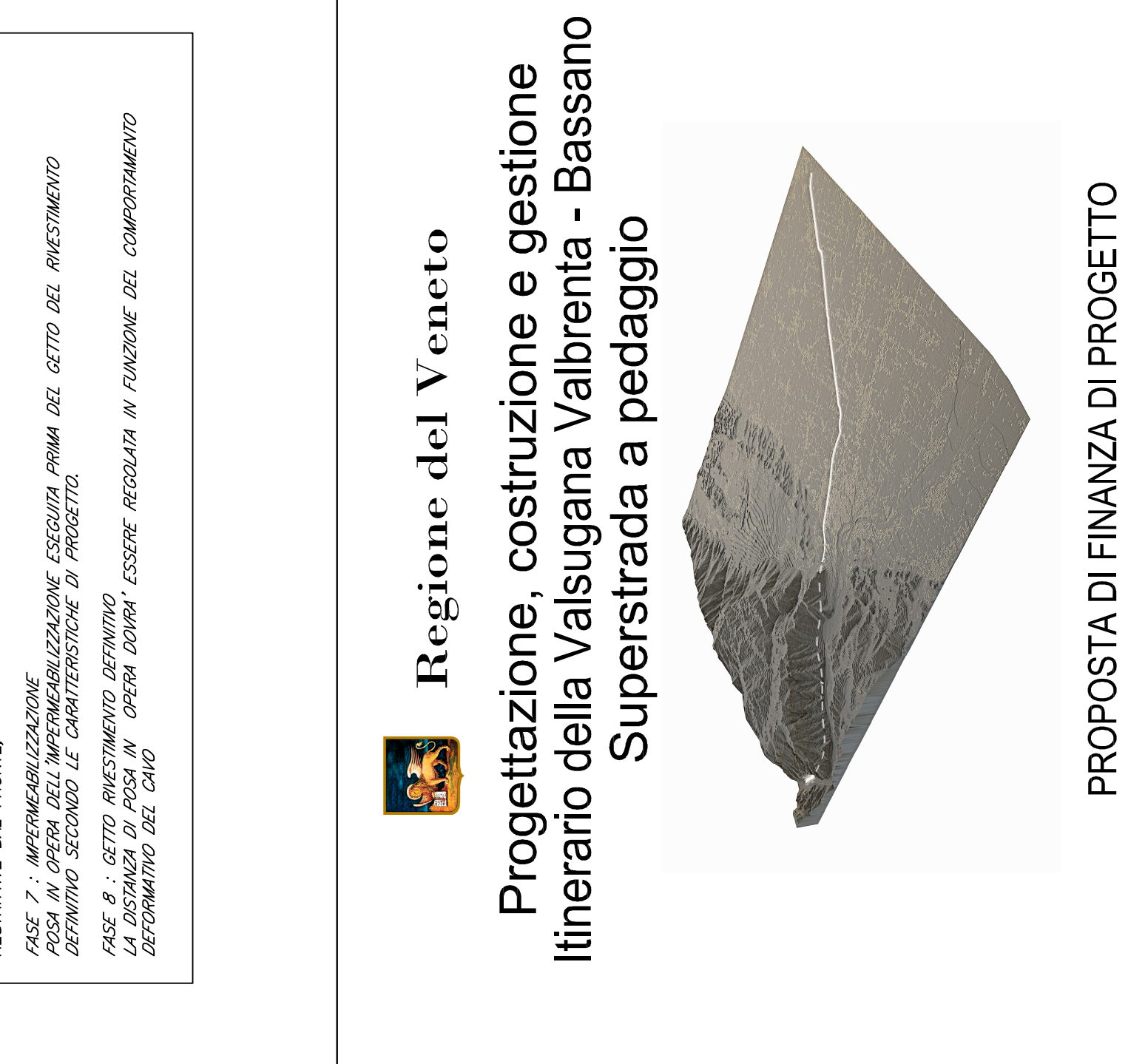
SEZIONE Y-Y

scala 1:5



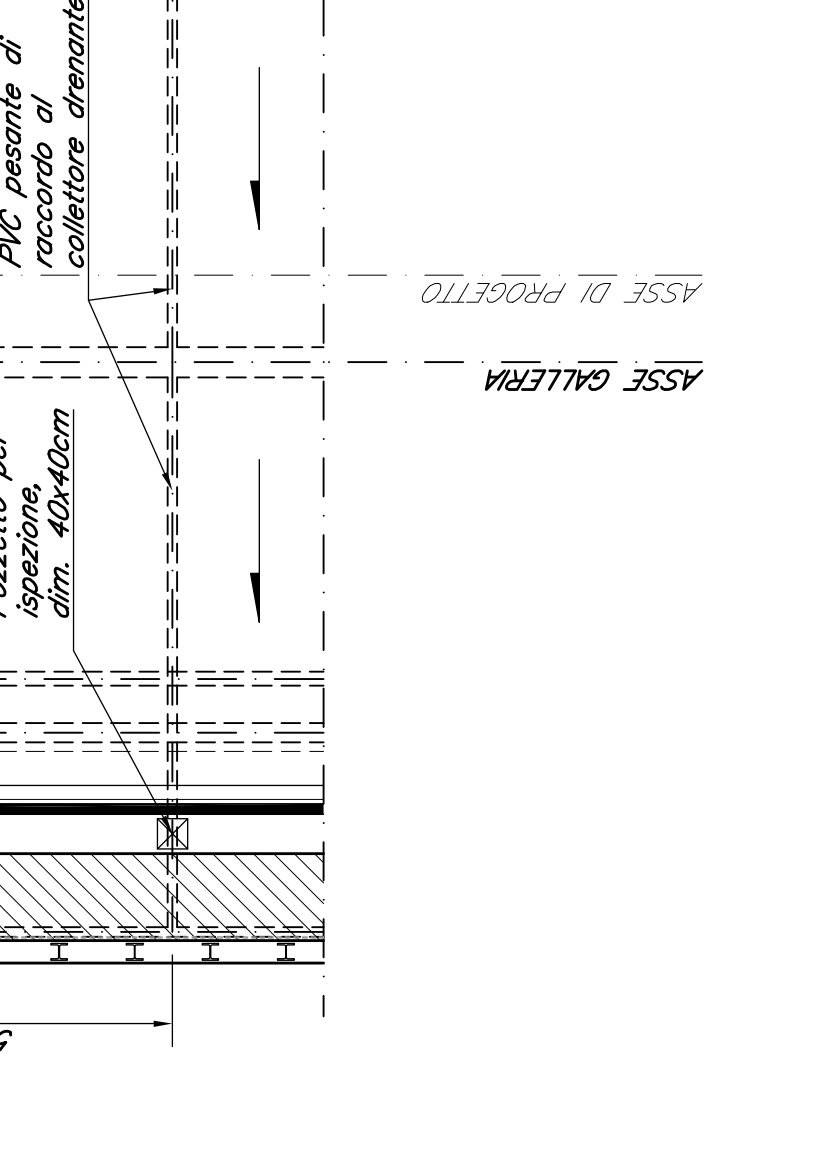
SEZIONE X-X

scala 1:5



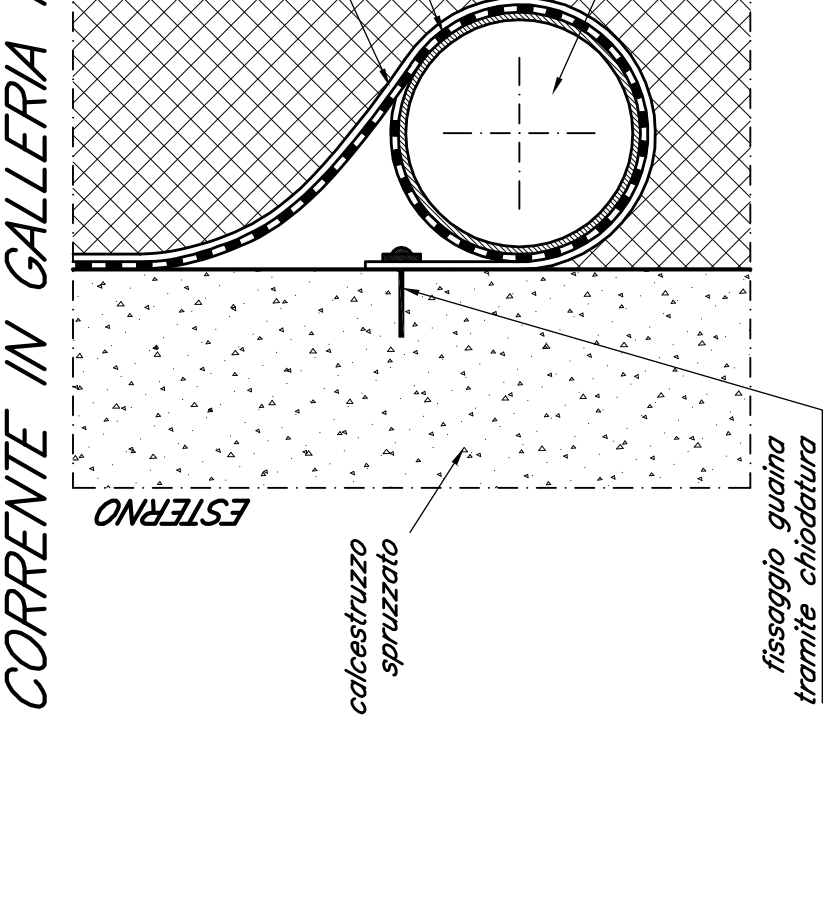
PARTICOLARE TUBO DI GALLERIA NATURALE

scala 1:10



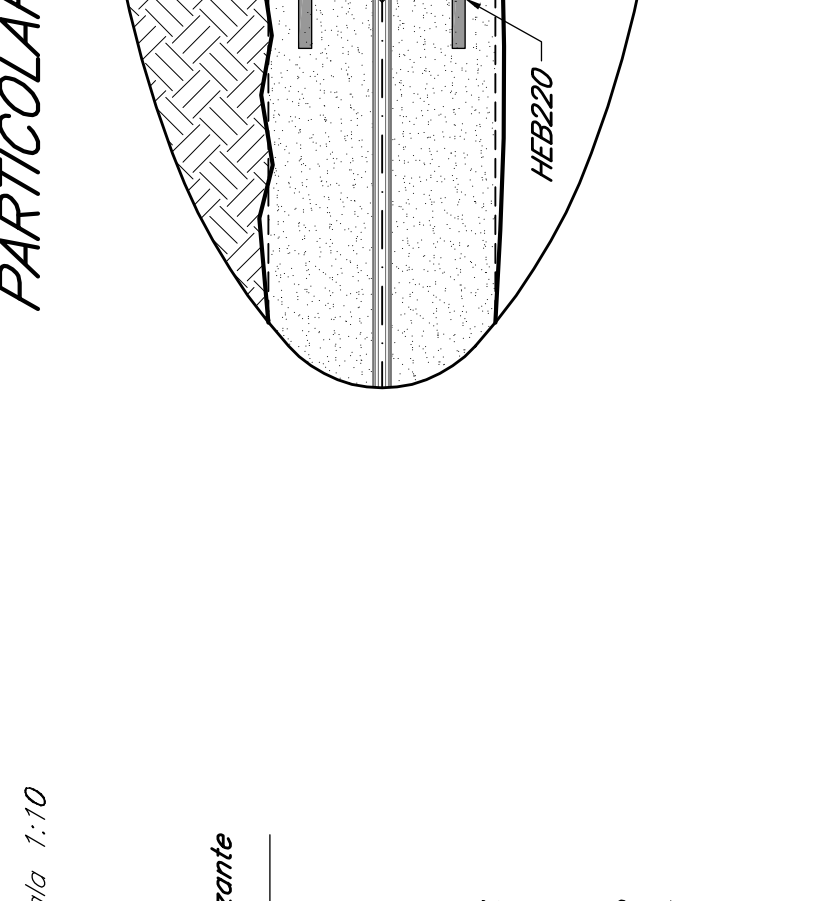
PARTICOLARE 1 RIVESTIMENTO DI PRIMA FASE

scala 1:10



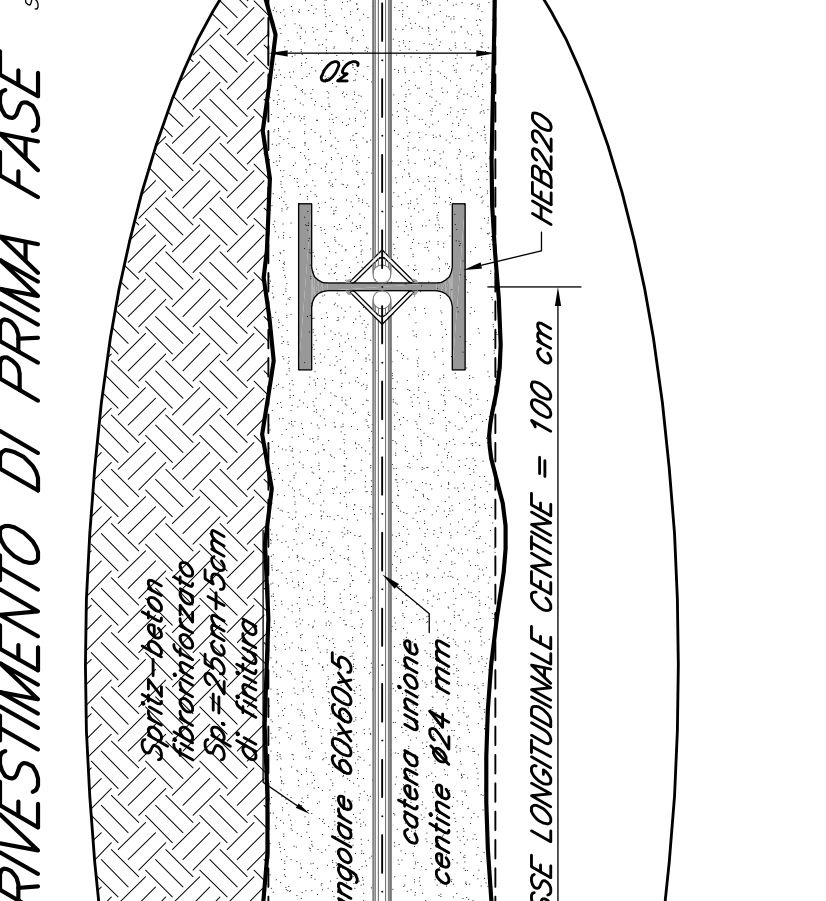
PARTICOLARE CATENE

scala 1:5



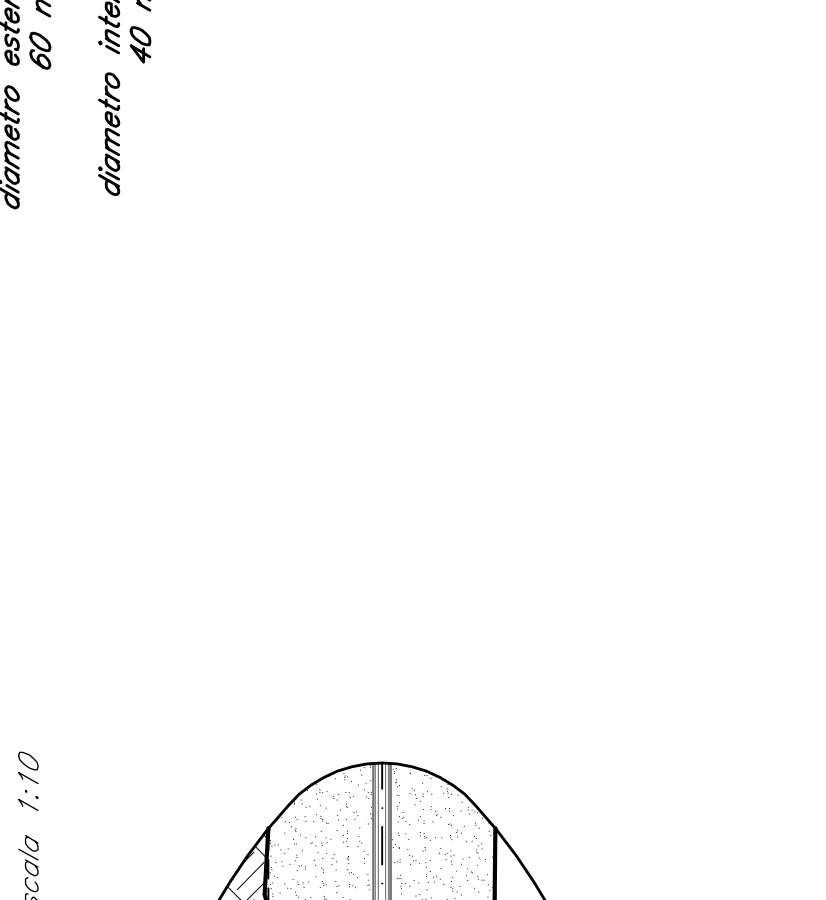
PARTICOLARE PARETE CENTINE

scala 1:5



PARTICOLARE TUBO IN VETRORESINA

scala 1:5



REGIONE DEL VENETO

Project information including the name 'Progettazione, costruzione e gestione itinerario della Valsugana Valbrenta - Bassano Superstrada a pedaggio', the architect 'Pizzarotti', and the client 'Regione del Veneto'.