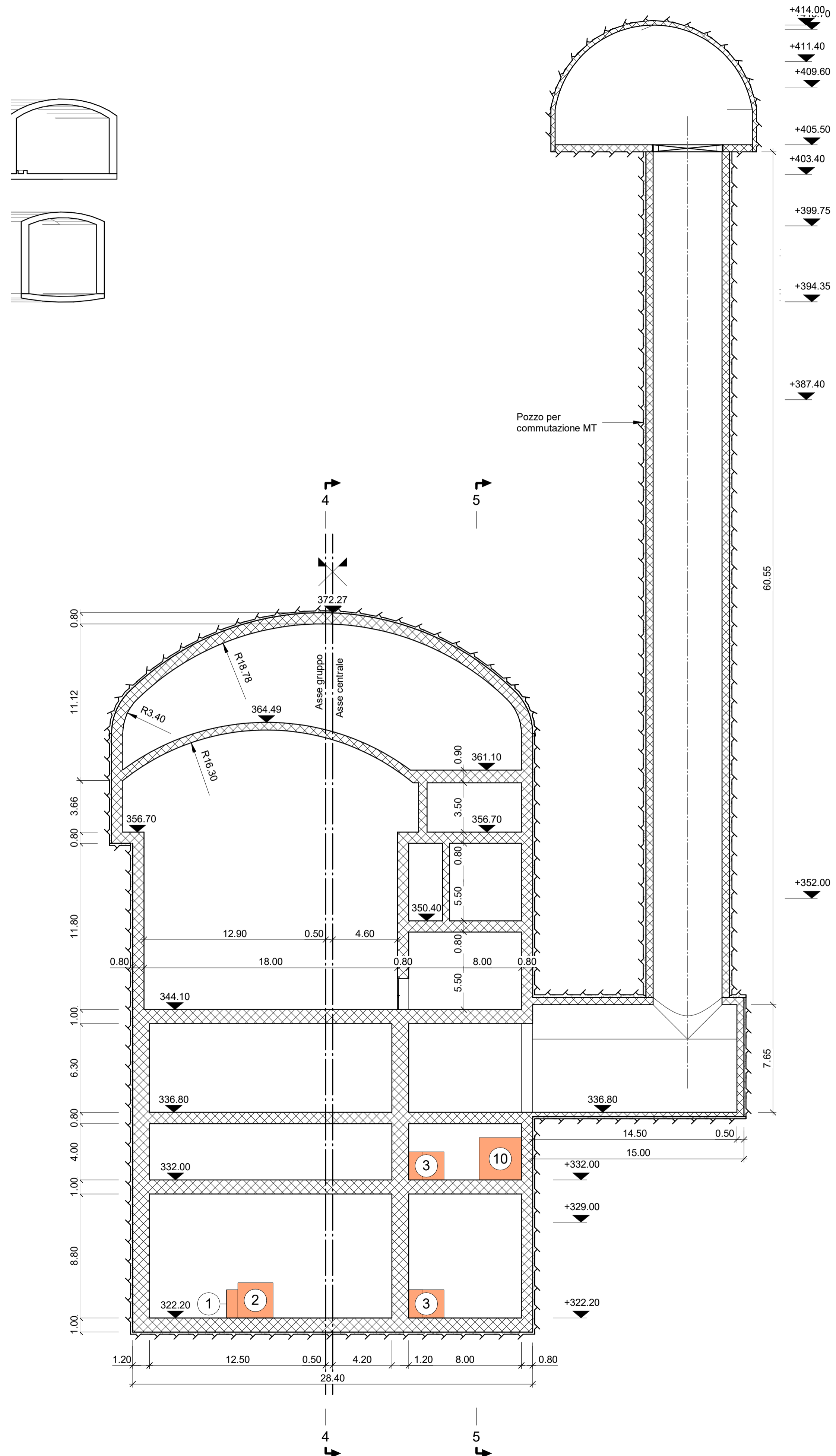
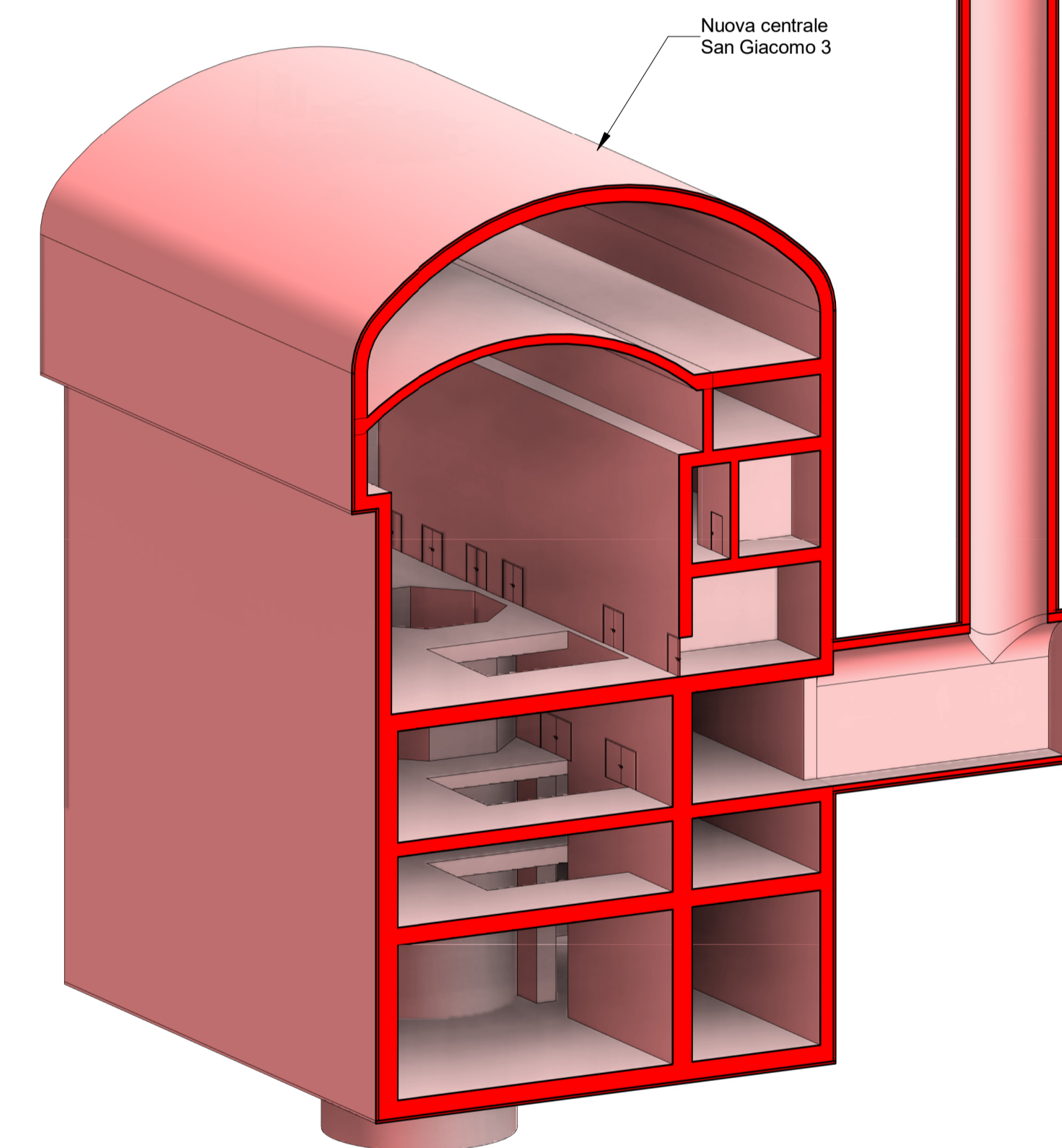
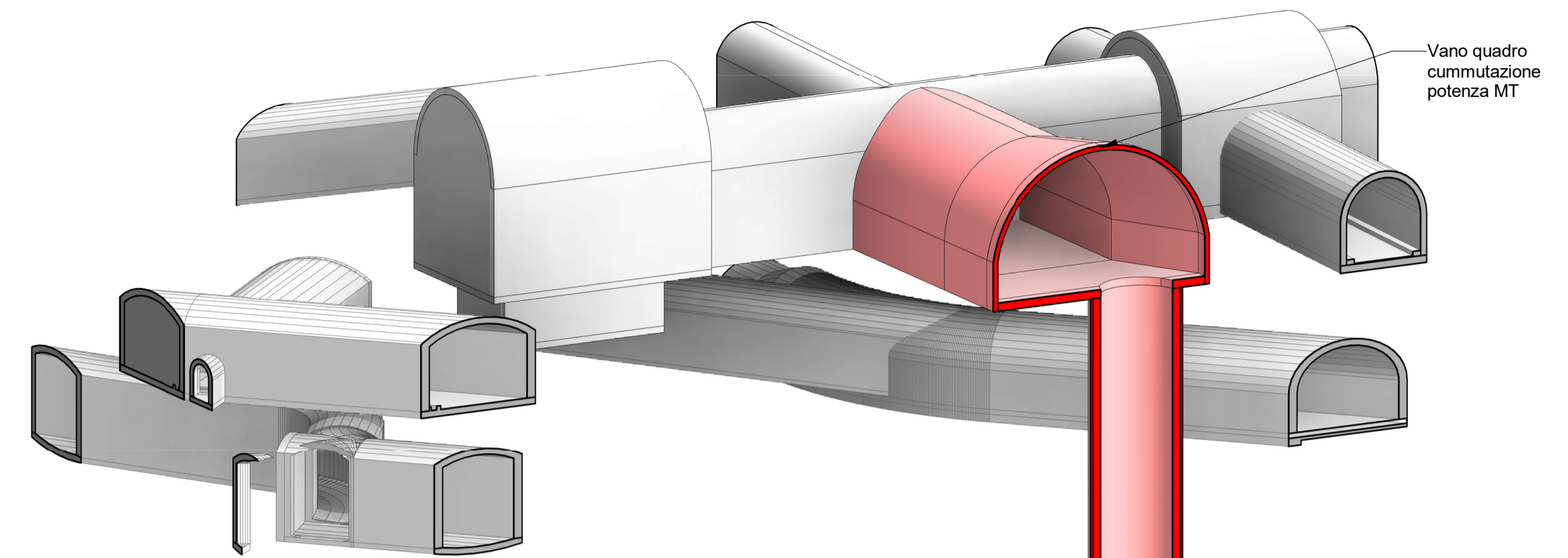


Sezione 6-6

(1:200)



Vista 3D



Legenda:

- Stato di fatto
- Nuova costruzione
- Demolizione
- Calcestruzzo armato
- Calcestruzzo di livellamento
- Linea della roccia

1:200 (A1)

0 2000 10000 20000 mm

00	12/08/2022	Emissione per revisione cliente	A. Guglielmi	F. Maugliani / C. Piccinin	M. Braghini
REV	DATE	DESCRIPTION	PREPARED	CHECKED	APPROVED
CONTRACTOR'S LOGO		PROJECT:	CENTRALE DI SAN GIACOMO III INSTALLAZIONE DI NUOVO GRUPPO DI POMPAGGIO		
Lombardi		FILE NAME (EGP CODE):	GRE.EEC.D.99.IT.H.17170.00.037.00		
enel Green Power		LOMBARDI CODE:	2021.0047.009-GC-CLE-DW-036		
HGT Design & Execution EGP VALIDATION		CLASSIFICATION:	Public	FORMAT:	A1
Project Engineer: P. Viganoni		SCALE:	1:200	PLOT SCALE:	1:1
VALIDATED BY:		UTILIZATION SCOPE:	Progetto Definitivo per Autorizzazione		
Support Team:		TITLE:	Stato di Progetto Sezioni nuova Centrale S. Giacomo 3 3/3		
VERIFIED BY:	EGP CODE		GROUP	FUNCTION	TYPE
COLLABORATORS:	GRE EEC		D	9	9
			I	T	H
			1	7	1
			7	0	0
			0	0	3
			7	0	0

This document is property of Enel Green Power SpA. It is strictly forbidden to reproduce this document, in whole or in part, and to provide to others any related information without the previous written consent by Enel Green Power SpA.