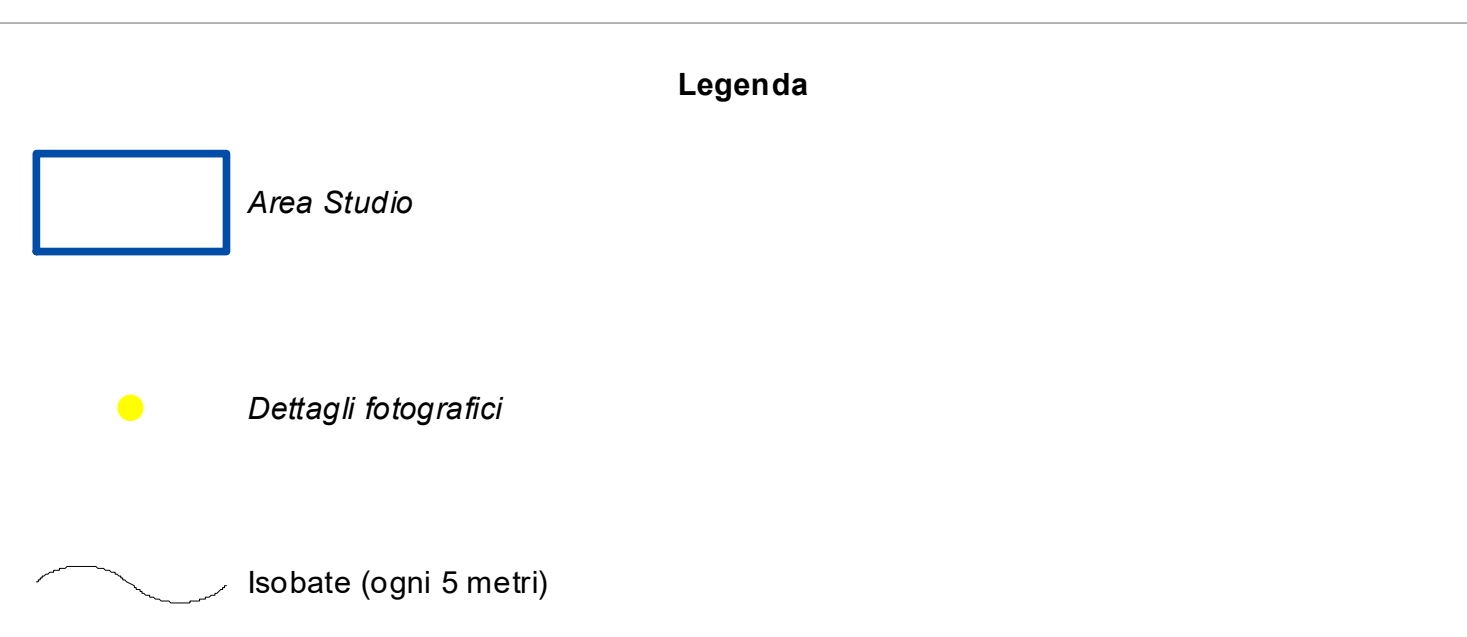
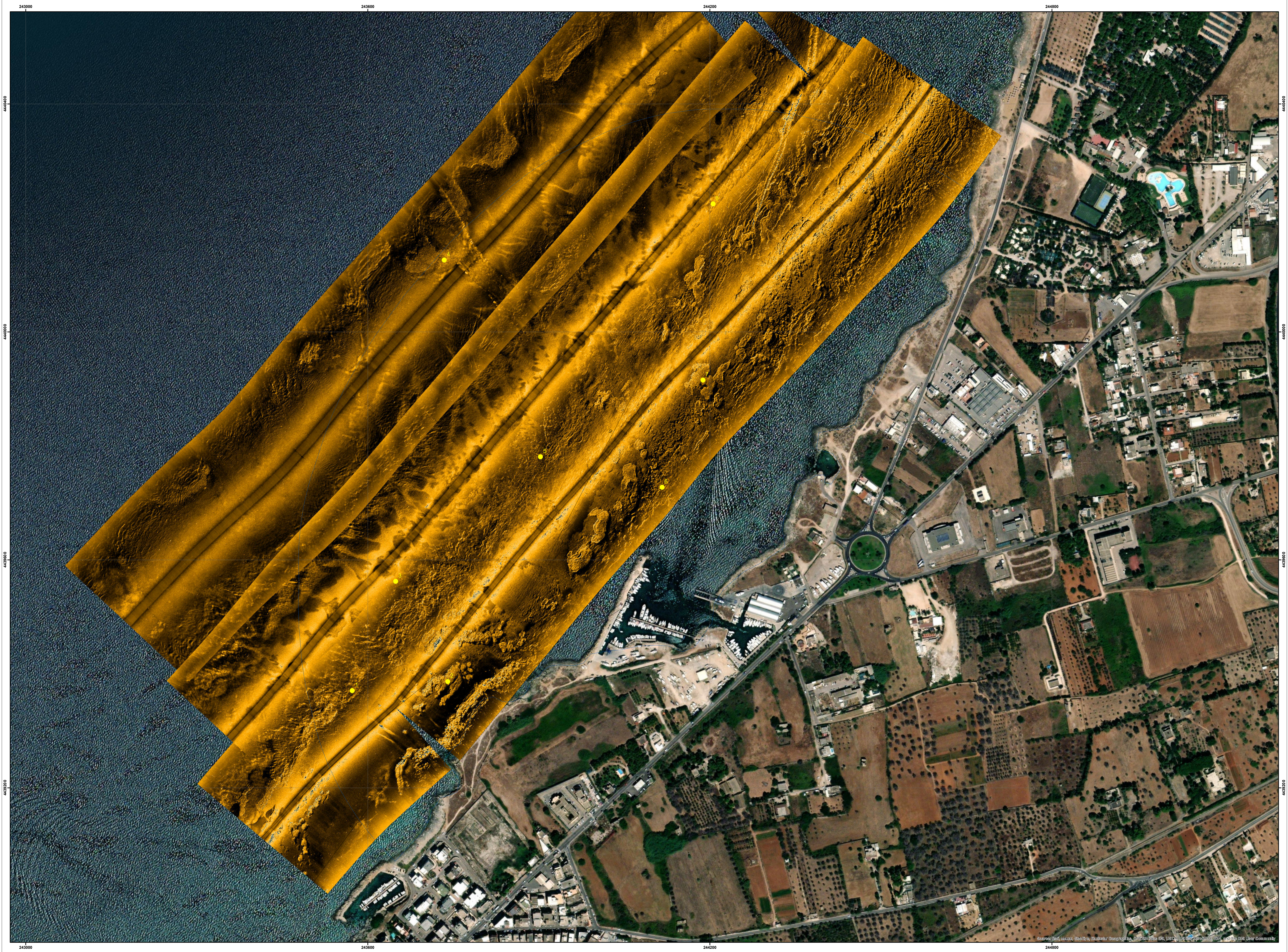
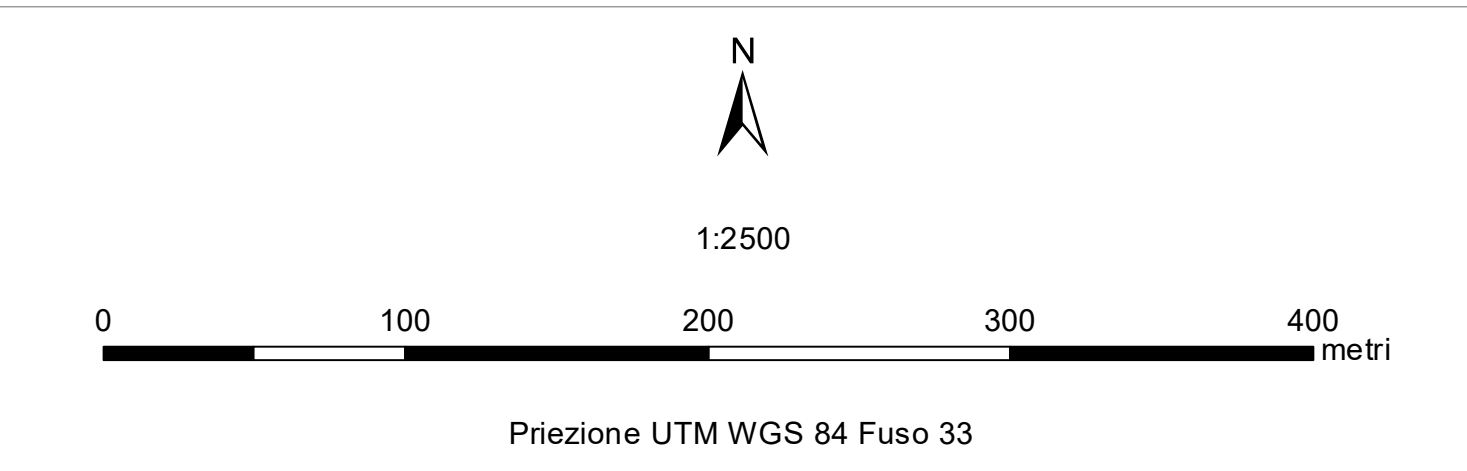
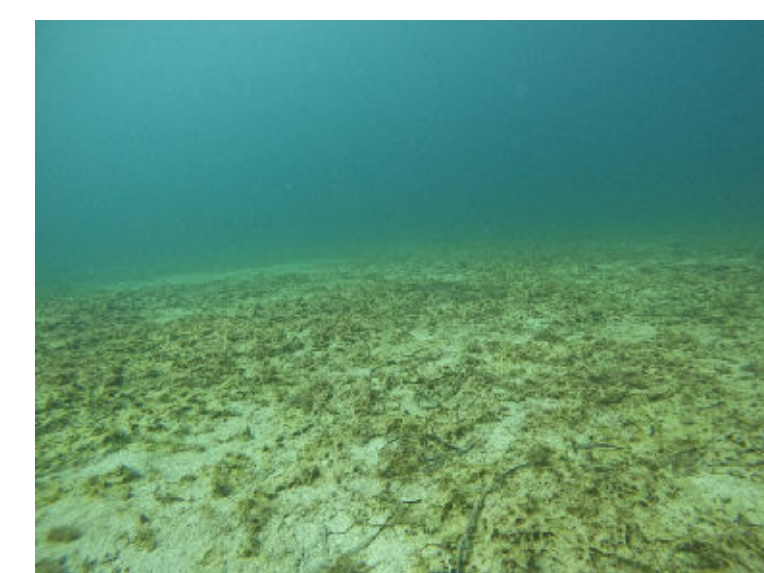


Responsabile:
 Dott. Geol. Giuseppe CALO'

A cura di:
 Dott. Biol. Marco D'ADAMO, Ph.D.
 Dott. Biol. Luciana MUSCOGIURI, Ph.D.



Dettagli fotografici (verità a mare)



Dettaglio 1: Biocenosi delle alghe infralitorali



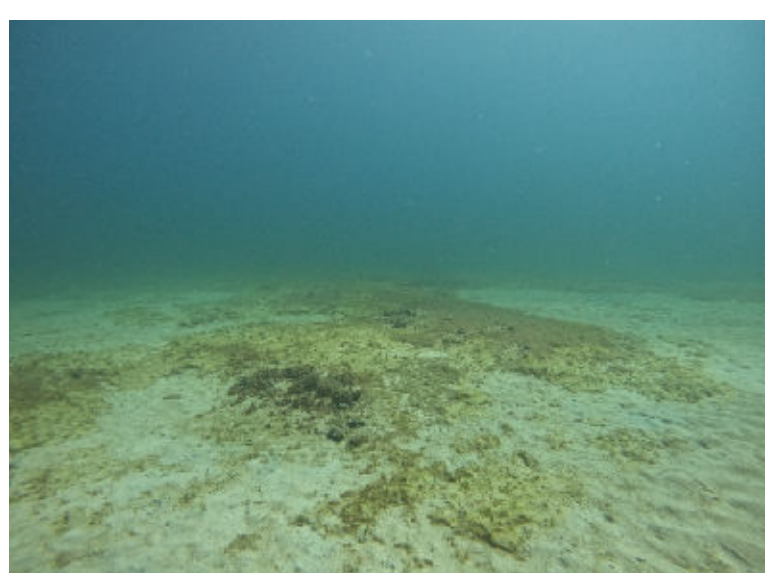
Dettaglio 2: Prateria a P. oceanica



Dettaglio 3: Biocenosi delle sabbie grossolane e ghiaie fini mescolate dalle onde



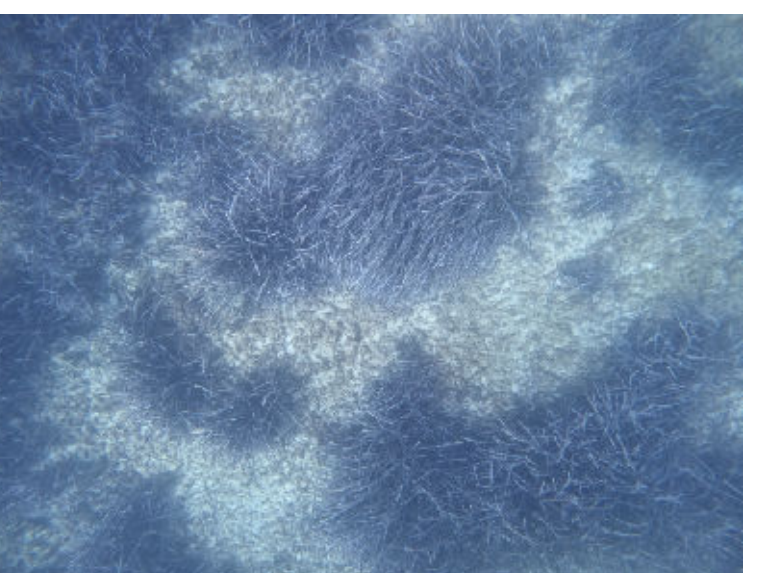
Dettaglio 4: Prateria a P. oceanica



Dettaglio 5: Biocenosi delle alghe infralitorali



Dettaglio 6: Biocenosi delle alghe infralitorali



Dettaglio 7: Prateria a P. oceanica



Dettaglio 8: Biocenosi delle alghe infralitorali